

82E/6E

110
L49-199 SE.
Crater Lake Group.
Highland-Bell Ltd.
Kidd, D.F., Engineer.

0017

17

REPORT ON THE
CRATER LAKE GROUP OF MINERAL CLAIMS
GREENWOOD MINING DIVISION
BRITISH COLUMBIA
by
D.F.Kidd

D. F. KIDD
MINING GEOLOGIST

INTRODUCTION.

The Crater Lake Group of mineral claims, Greenwood Mining Division, British Columbia is under option to Highland-Bell Limited. This report is an appraisal of the present value of the claims based on an examination of them by the writer. The claims have been mapped (using a plane-table) and sampled by the Highland-Bell engineering staff.

SUMMARY AND CONCLUSIONS.

The claims are on Wallace Mt. east of Beaverdell, British Columbia. They are in a dissected area of the interior plateau. The surface is wooded. Outcrops are scant. Most outcrops are of uniform quartz diorite. There are occasional dikes. There are 500 feet of workings in 4 adits. No showings of any interest have been exposed except in the south central part of the Bellaclava claim. Here a shoot of gold ore 28 feet long was opened years ago. It averages 0.51 ounces gold and 1.51 ounces silver per ton across 18 inches. The ends are open. The shoot has not been opened on the surface 70 feet up the dip.

It is concluded that this, the best known showing, is not sufficiently promising to warrant at this time further development.

TITLE.

The Crater Lake Group of claims consists of the Silver Hoard, Zora May, Bellaclava, Hidden Treasure, and Rico Fractional claims. All are located claims relocating old surveyed claims. All are under option to purchase by Highland- Bell Limited.

GEOLOGY.

Wallace Mt. is at the edge of the Westkettle valley dissecting the interior plateau. The topography is rolling and hilly with relief of several hundred feet. Outcrops are scant.

Rock exposed on the claims is mostly uniform equigranular quartz diorite. Rare dark coloured dikes up to 15 feet wide occur in two sets. One dike strikes $N 30^{\circ} E$ through the Bellaclava claim. Three dikes, two on the road across the Bellaclava claim and one in the Silver Hoard claim adits, strike 290° nearly at right angles to the first dike. These dikes are all fine grained and are probably andesite.

STRUCTURE.

Little is known of the fault pattern on the claims. Faults or shear zones have been recognized trending:

Strike 10°	dip $30^{\circ} W$	one shear (Bellaclava lode)
" 40°	" $45^{\circ} NW$	two "
" 105°	" vertical	one "

These cannot be interpreted as a pattern as there are too few outcrops.

LODES.

Two lodes have been developed on the property.

On the Silver Hoard and Hidden Treasure claims three adits have been driven along or near a dark green dike that strikes 290° and dips vertically. They follow a parting plane, probably a small fault, that is at or close to the south wall of the dike. The objective of this work is obscure. No mineralization is apparent except in the uppermost adit. Near its face are two lenses of quartz mineralized with pyrite. The largest is 5 feet by 2 inches.

In the south part of the Bellaclava claim a cross-cut adit cuts a shear zone. A winze of unknown, probably shallow, depth goes down on it, and a drift has been driven north on it. It strikes 10° and dips $15-30^{\circ}$ west. Two parallel shears 1-2 feet apart enclose fine grained light coloured rock that has been irregularly silicified. In these portions it is mineralized with pyrite, arsenopyrite and pyrrhotite.

SAMPLING.

The Bellaclava drift has been sampled. In a length of 28 feet 15 channel samples taken at regular intervals across the lode on both walls of the drift average 0.51 ounces gold and 1.51 ounces silver across 17.6 inches. These values are considered sub-commercial today.

Nothing warranting sampling was seen in the Silver Hoard- Hidden Treasure adits

Wm. F. Hoard

Oct. 9/47

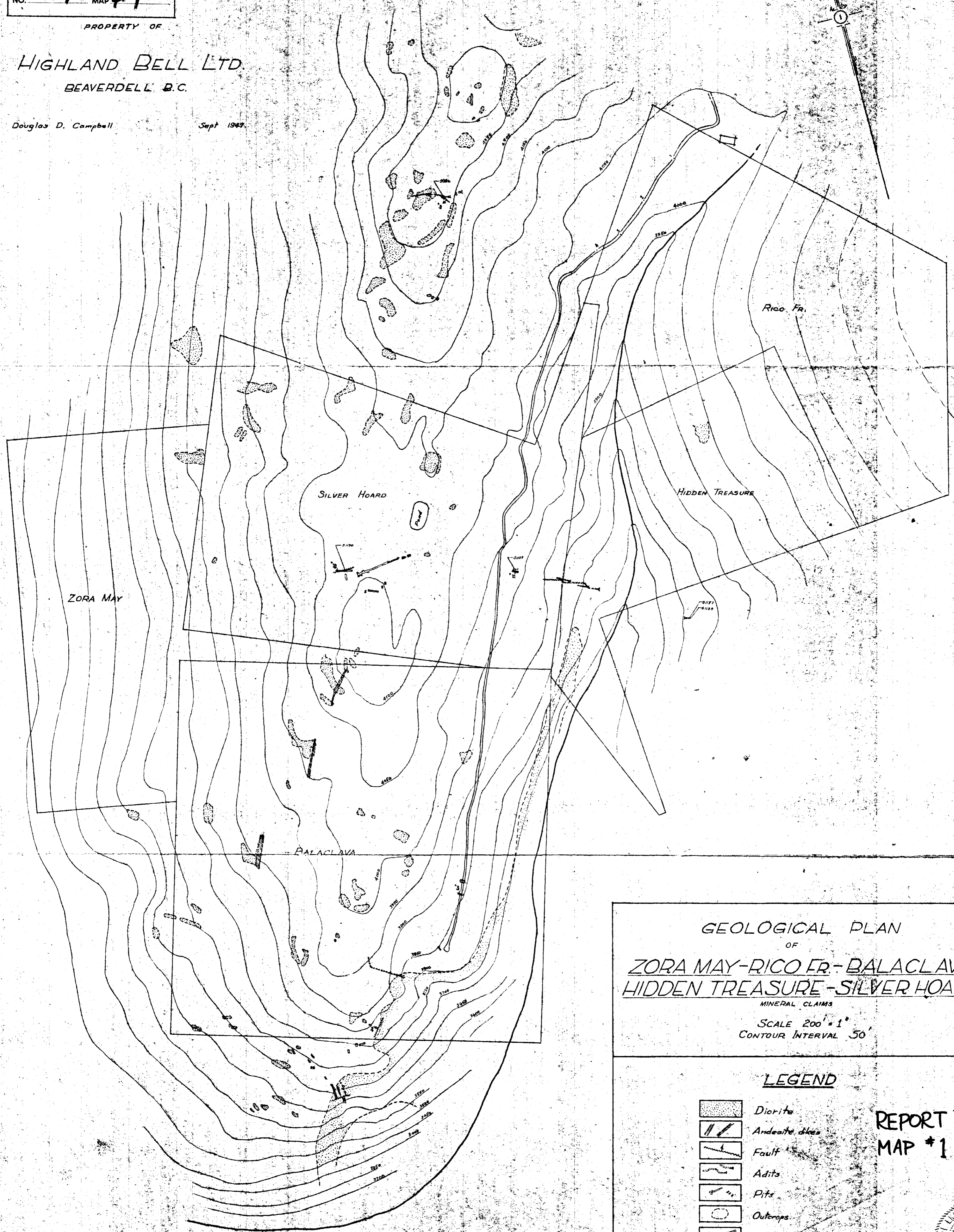
Department of
Mines and Petroleum Resources
ASSESSMENT REPORT
NO. **17** MAP #1

PROPERTY OF

HIGHLAND BELL LTD.
BEAVERDELL B.C.

Douglas D. Campbell

Sept 1947

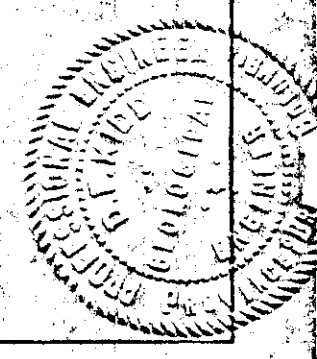


GEOLOGICAL PLAN
OF
ZORA MAY-RICO FR.-BALACLAVA
HIDDEN TREASURE-SILVER HOARD
MINERAL CLAIMS
SCALE 200' = 1"
CONTOUR INTERVAL 50'

LEGEND

- Diorite
- Andesite dikes
- Fault
- Adits
- Pits
- Outcrops
- Road

REPORT #17
MAP #1

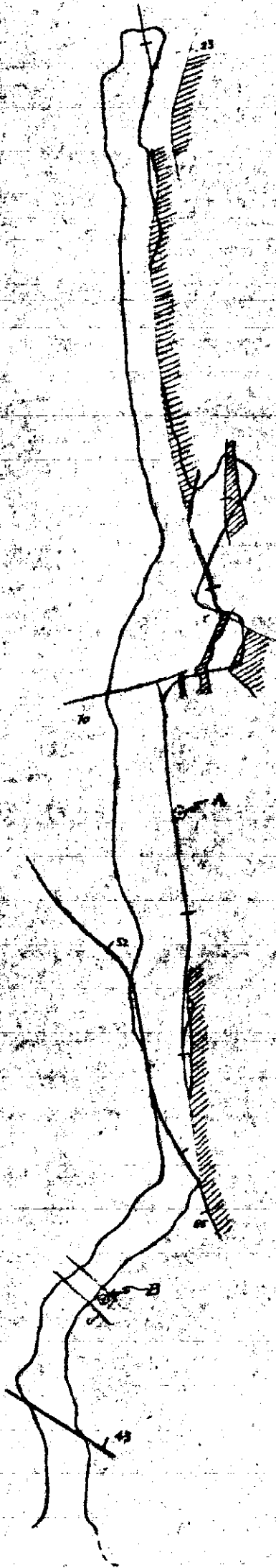


HIDDEN TREASURE AND SILVER HOARD ADITS.

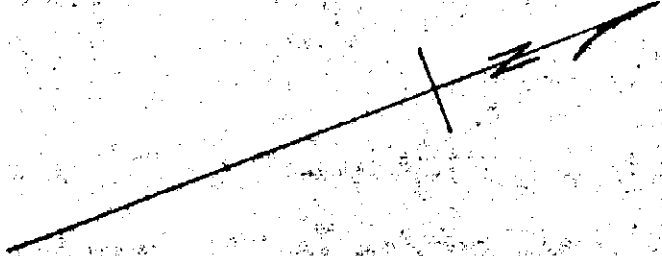
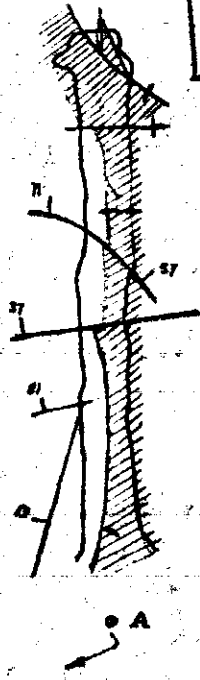
0 20 40 60
SCALE 1" = 20'

Department of
Mines and Petroleum Resources
ASSESSMENT REPORT
NO. 17 MAP #2

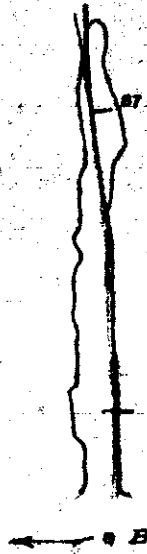
LOWER ADIT



UPPER ADIT



MIDDLE ADIT



REPORT #17
MAP #2

LEGEND



Andesite dike



Fault



Qtz. or sulfides.