

82E/6E

Claim: L49-119 SE
Bellaclava.
Owner: Silver Bounty Mines Ltd.
Engineer: G.S. Eldridge.

July 28, 1948.

0037

ELECTRONIC SURVEYS LIMITED

567 HORNBY STREET
VANCOUVER, B.C.

37

July 28th, 1948.

SILVER BOUNTY MINES LTD.,
Vancouver, B.C.

Dear Sirs:

We have made a Geophysical Survey of the "Bellaclava" claim, one of the Henderson Group of 8 Mineral Claims which are part of your holdings on Wallace Mountain, Beaverdell, B.C., and report as follows:

The location line of the "Bellaclava" runs South $14^{\circ}43'$ W. Seven hundred feet lie to the left, and eight hundred feet to the right. At 100 feet below the No.2 post on the location line, meter readings were noted on the geophysical instrument. Continuing along the location line, using a Brunton compass and a 50-foot tape, meter readings were noted until the No.1 post was reached.

Moving along the boundary line (which runs $S.75^{\circ}17'$ E.) for 50 feet, and following parallel to the boundary line, readings were again noted every 50 feet until the upper boundary line was reached.

This procedure was followed on both sides of the location line until the whole claim had been covered wherever surface conditions permitted, as shown on the accompanying plan. When the tone increased in the ear phones and readings on the micro-ammeter were found to increase between 50-ft. points, the area was thoroughly checked for higher anomalies and was charted.

When the needle swing on the micro-ammeter was below six points no readings were noted until a distance of 50 feet was reached. At this point, meter readings were noted regardless of the fact that they were below six divisions on the dial. Where bluffs or other obstructions prevented readings being taken, no readings are shown on the map accompanying this report.

The map is laid out on a scale of one inch equalling 50 feet. Where the lines cross, one another are the points where readings are shown.

The surface of the "Bellaclava" claim is somewhat irregular, due to the outcropping of rocks and bluffs, with numerous windfalls and small meadowlike areas.

There are six areas on the "Bellaclava" that show a decided increase in the needle swing on the micro-ammeter. These areas are clearly shown on the accompanying map.

Aug. 17, 1948

A sample taken off the outcrop at point "O - P" (on the location line) and between lines 100 W. and 150 W. showed a decided Copper stain, and assayed: Gold, trace; Silver 0.6 ozs. per ton. This was the only place from which a sample was taken, the other areas not being sampled owing to overburden.

In order to get our findings correlated to the existing vein system, we would recommend that the following development work be carried out before having a detailed geological survey made of the area:

1. The highest anomaly (30 divisions on the dial) occurred at a point 35 feet East of Station "F" on the location line. This place was covered with overburden, and we would strongly recommend that a pit be dug here to bedrock, and that trenching be carried out (if not too deep) in an East-West direction to cut across the line of high anomalies shown on the map.
2. The anomalies at Position "O - P" 150 West, while not as strong as the above, are sufficient to warrant open cutting across the line joining the three highest readings, which lie along the line of fracture in the rock which outcrops at the middle reading. The presence of Copper stain at this point may be indicative of a vein in this district, which carries both gray copper and chalcopyrite.
3. At position "I - 500 E." a good reading was obtained at a point close to the edge of a bluff. Here, surface stripping should be carried out.
4. At position "B-C" - 200 E. another decided anomaly was obtained. A pit should be dug here to bedrock, and if not too deep trenching carried out to expose the dip and strike of fracturing.

Respectfully submitted.

ELECTRONIC SURVEYS LIMITED

per



Registered Professional Engineer.

ELECTRONIC SURVEYS LIMITED

567 HORNBY STREET
VANCOUVER, B.C.

July 28th, 1948.

SILVER BOUNTY MINES LTD.,
Vancouver, B.C.

---in account with---

ELECTRONIC SURVEYS LIMITED.

TO: Electronic Survey of the "Bellaclava" Claim
in the Henderson Group, on Wallace Mountain,
Beaverdell, B.C., including -

Services of Geophysicist, Wm. G. Showers: June 7th to 30th inclusive - 24 days at \$35.00 per day	\$ 840.00
Services of one Assistant - 24 half-days at \$4.00 per half-day	96.00
Services of G.S. Eldridge checking survey 4 days at \$35.00	140.00
Travelling expenses - two men, under flood conditions, from Vancouver to Penticton by plane; thence to Beaverdell, including hotel expenses 26 days	126.80
	<hr/>
	\$ 1,202.80
	<hr/>

Received payment August 25th, 1948
ELECTRONIC SURVEYS LTD.

per.

O.G. HENDERSON.

ELECTRONIC SURVEYS LIMITED

567 HORNBY STREET
VANCOUVER, B.C.

July 28th, 1948.

SILVER BOUNTY MINES LTD.,
Vancouver, B.C.

Dear Sirs:

We have made a Geophysical Survey of the "Bellaclava" claim, one of the Henderson Group of 8 Mineral Claims which are part of your holdings on Wallace Mountain, Beaverdell, B.C., and report as follows:

The location line of the "Bellaclava" runs South $14^{\circ}43'$ W. Seven hundred feet lie to the left, and eight hundred feet to the right. At 100 feet below the No.2 post on the location line, meter readings were noted on the geophysical instrument. Continuing along the location line, using a Brunton compass and a 50-foot tape, meter readings were noted until the No.1 post was reached.

Moving along the boundary line (which runs $S.75^{\circ}17'$ E.) for 50 feet, and following parallel to the boundary line, readings were again noted every 50 feet until the upper boundary line was reached.

This procedure was followed on both sides of the location line until the whole claim had been covered wherever surface conditions permitted, as shown on the accompanying plan. When the tone increased in the ear phones and readings on the micro-ammeter were found to increase between 50-ft. points, the area was thoroughly checked for higher anomalies and was charted.

When the needle swing on the micro-ammeter was below six points no readings were noted until a distance of 50 feet was reached. At this point, meter readings were noted regardless of the fact that they were below six divisions on the dial. Where bluffs or other obstructions prevented readings being taken, no readings are shown on the map accompanying this report.

The map is laid out on a scale of one inch equalling 50 feet. Where the lines cross, one another are the points where readings are shown.

The surface of the "Bellaclava" claim is somewhat irregular, due to the outcropping of rocks and bluffs, with numerous windfalls and small meadowlike areas.

There are six areas on the "Bellaclava" that show a decided increase in the needle swing on the micro-ammeter. These areas are clearly shown on the accompanying map.

A sample taken off the outcrop at point "O - P" (on the location line) and between lines 100 W. and 150 W. showed a decided Copper stain, and assayed: Gold, trace; Silver 0.6 ozs. per ton. This was the only place from which a sample was taken, the other areas not being sampled owing to overburden.

In order to get our findings correlated to the existing vein system, we would recommend that the following development work be carried out before having a detailed geological survey made of the area:

1. The highest anomaly (30 divisions on the dial) occurred at a point 35 feet East of Station "F" on the location line. This place was covered with overburden, and we would strongly recommend that a pit be dug here to bedrock, and that trenching be carried out (if not too deep) in an East-West direction to cut across the line of high anomalies shown on the map.

2. The anomalies at Position "O - P" 150 West, while not as strong as the above, are sufficient to warrant open cutting across the line joining the three highest readings, which lie along the line of fracture in the rock which outcrops at the middle reading. The presence of Copper stain at this point may be indicative of a vein in this district, which carries both gray copper and chalcopyrite.

3. At position "I - 500 E." a good reading was obtained at a point close to the edge of a bluff. Here, surface stripping should be carried out.

4. At position "B-C" - 200 E. another decided anomaly was obtained. A pit should be dug here to bedrock, and if not too deep trenching carried out to expose the dip and strike of fracturing.

Respectfully submitted.

ELECTRONIC SURVEYS LIMITED

per G. S. Eldridge
Registered Professional Engineer.

ELECTRONIC SURVEYS LIMITED

567 HORNBY STREET
VANCOUVER, B.C.

July 28th, 1948.

SILVER BOUNTY MINES LTD.,
Vancouver, B.C.

---in account with---

ELECTRONIC SURVEYS LIMITED.

TO: Electronic Survey of the "Bellaclava" Claim
in the Henderson Group, on Wallace Mountain,
Beaverdell, B.C., including -

Services of Geophysicist, Wm. G. Showers:
June 7th to 30th inclusive -
24 days at \$35.00 per day \$ 840.00

Services of one Assistant -
24 half-days at \$4.00 per half-day 96.00

Services of G.S. Eldridge checking survey
4 days at \$35.00 140.00

Travelling expenses - two men, under
flood conditions, from Vancouver to
Penticton by plane; thence to Beaverdell,
including hotel expenses 26 days 126.80

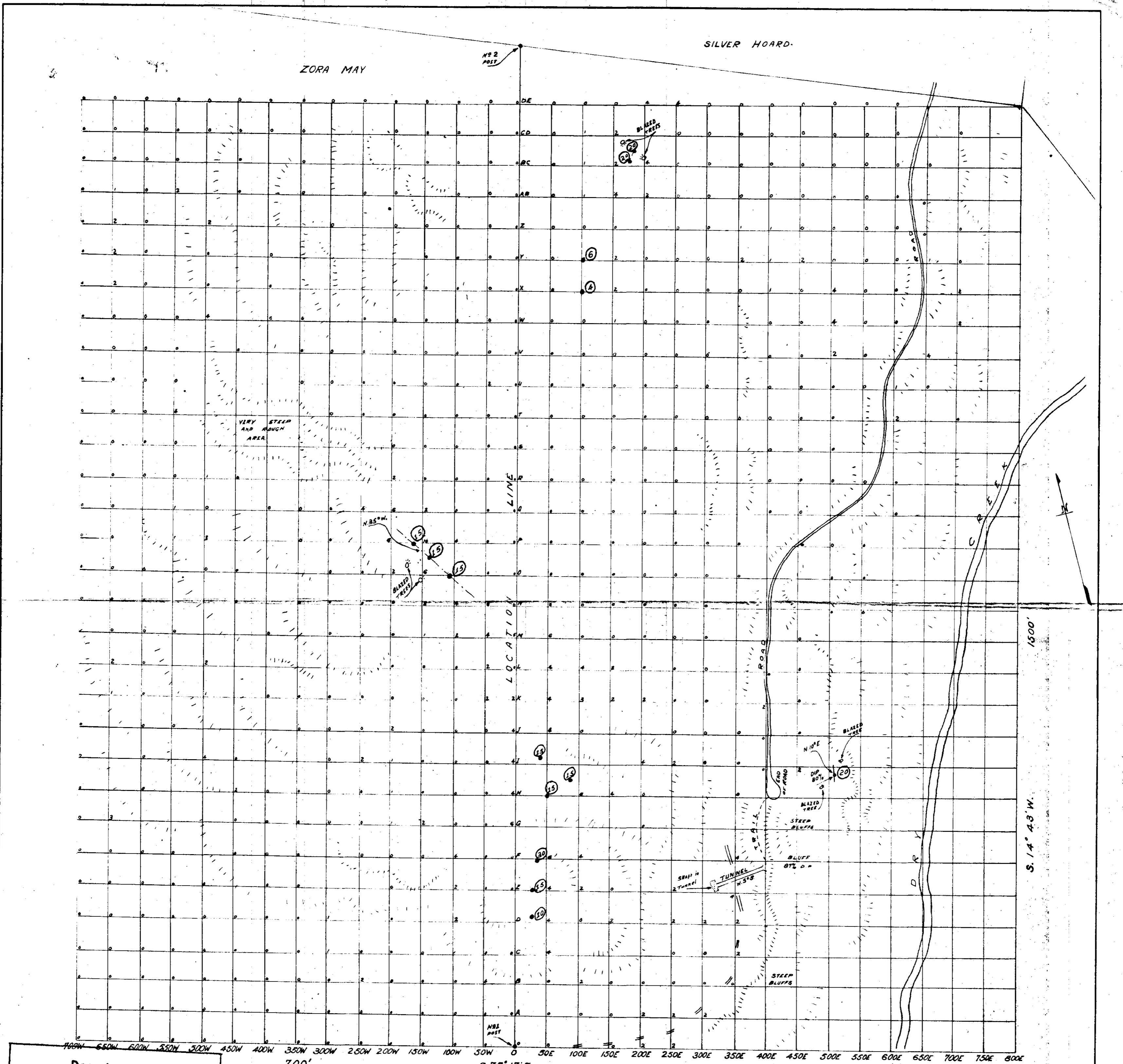
\$ 1,202.80
=====

Received payment August 25th, 1948

ELECTRONIC SURVEYS LTD.

per.

O.G.HENDERSON.



Department of
Mines and Petroleum Resources
ASSESSMENT REPORT
NO. **37** MAP **#1**

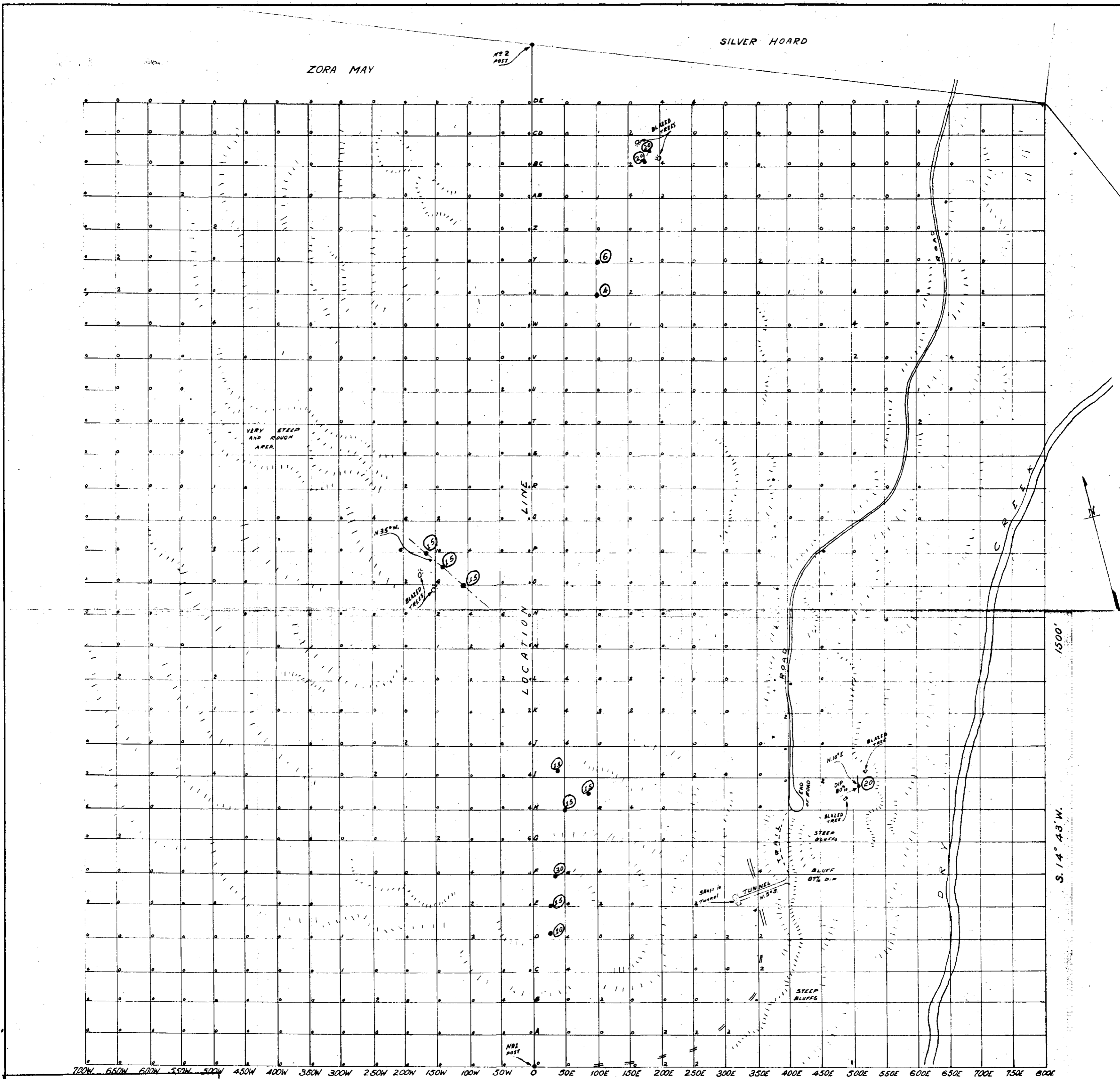
SILVER BOUNTY MINES LTD. (N.P.L.)

WALLACE MTN. BEAVERDELL B.C.

GEOPHYSICAL SURVEY MAP of BALACLAVA MINERAL CLAIM

REPORT 37
MAP 1

SCALE: 1 INCH = 100 FEET.



Department of
Mines and Petroleum Resources
ASSESSMENT REPORT

NO. **37** MAP **#2**

SILVER BOUNTY MINES LTD. (N.P.L.)

WALLACE MTN. BEAVERDELL B.C.

GEOPHYSICAL SURVEY MAP of BALACLAVA MINERAL CLAIM

REPORT 37
MAP 2

SCALE : 1 INCH = 100 FEET.