

GEOPHYSICAL REPORT

195

ELVA #4 M. C.

Ikeda Bay, Queen Charlotte Islands

52° 131° SE

Skeena M. D., B. C.

Chas. M. Campbell Jr. - Mining Engineer

August 1st, 1957 - August 7th, 1957

103B/6E

Chief Gold Commissioner,
Parliament Buildings,
Victoria, B.C.

Mining Recorder,
Prince Rupert, B.C.,
January 24th 1958.

Re: Ikeda No.7, Elva No.4 and
Magnetite Group of Mineral
Claims, Ikeda Bay, Q.C.I.

195

Referring to your letter of January 7th, concerning the geophysical work completed by the St. Eugene Mining Corporation Ltd. N.P.L., on the above mentioned mineral claims, the following is the information requested:

1. Two instruments were used - both made by Sharpe Instruments Limited of Toronto.
2. The instrument used on the Elva No.4 and the Ikeda No. 7 claims was graduated in quadrants. That used on the Magnetite Group was graduated from zero to 360°.
3. Yes the counterweight was adjusted for the locality.
4. In the case of the quadrant marked instrument on which a zero reading is made at "3 o'clock" on the instrument dial, those readings made with the needle above the zero point have been recorded with a minus sign, and those made with the needle below the zero point have been recorded with a plus sign.

In the case of the other instrument the zero point is at the top of the dial and readings are direct.

Would you kindly advise if the above data is sufficient and whether it is in order to proceed with the issuing of Certificates of Work.

HWH:ch

C
O
P
Y

H.W.Harding,
MINING RECORDER.

G E O P H Y S I C A L R E P O R T

on

*1
ELVA #4 M. C.

Rose

IKEDA BAY, QUEEN CHARLOTTE ISLANDS

52° 131° SE

SKEENA MINING DIVISION, B. C.

by

Charles M. Campbell Jr., Mining Engineer

Vancouver, B. C.
November 5th, 1957

SUITE 401-5
402 WEST PENDER STREET File #2474
VANCOUVER 3, B.C.

November 5th, 1957

The Mining Recorder,
Prince Rupert, B. C.

Dip Needle Survey of Elva #4
Mineral Claim

Dear Sir:

The results of the Survey are shown
in detail on the attached map. #1

These are essentially negative and
require no comment.

Yours very truly,

ST. EUGENE MINING CORPORATION LIMITED N.P.L.


Chas. M. Campbell Jr. P.Eng.

CMCJr/epg.

enclos.

SUITE 401-5
 402 WEST PENDER STREET
 VANCOUVER 3, B.C. **File #2468**

November 5th, 1957

The Mining Recorder,
 Prince Rupert, B. C.

Dear Sir:

The following is the record of salaries and wages paid in connection with the Dip Needle Survey of the Elva #4 mineral claim, one mile South West of Ikeda Bay in the Queen Charlotte Islands:

August 1st, 1957 to August 7th, 1957:

	<u>Days</u>	<u>Rate</u>	<u>Total</u>
Chas. M. Campbell Jr.	2	\$35.00	\$ 70.00
Meade Hepler	5	15.00	75.00
Ernest Smith	5	15.00	<u>75.00</u>
			<u>\$220.00</u>

Yours very truly,

ST. EUGENE MINING CORPORATION LIMITED, N.P.L.

GMC/epg.

Chas. M. Campbell Jr.
 Chas. M. Campbell Jr.

AFFIDAVIT:

I declare the above statements to be true and correct.

Nov 8/57.

[Signature]
 Gold Commissioner

Chas. M. Campbell Jr.

SUITE 401-5
402 WEST PENDER STREET
VANCOUVER 3, B.C., File #2471

November 5th, 1957

The Mining Recorder,
Prince Rupert, B. C.

Dear Sir:

Re: Filing of Geophysical Survey for Assessment Work on Elva #1 Mineral Claim near Ikeda Bay, Queen Charlotte Islands.
Statement of Qualifications of Charles M. Campbell Jr., Meade Hepler and Ernest Smith as specially qualified workers.

The following is an outline of qualifications as required by Order-in-Council 1532 -

Chas. M. Campbell Jr.

Mining Engineer employed by St. Eugene Mining Corporation Ltd. NPL. B. A. B.A.Sc. (Mining) University of British Columbia, 1938. Member Association of Professional Engineers of British Columbia (Mining).

Meade Hepler:

Experienced Prospector employed five years by St. Eugene Mining Corp. Ltd. NPL. with several years experience in Dip Needle Work.

Ernest Smith:

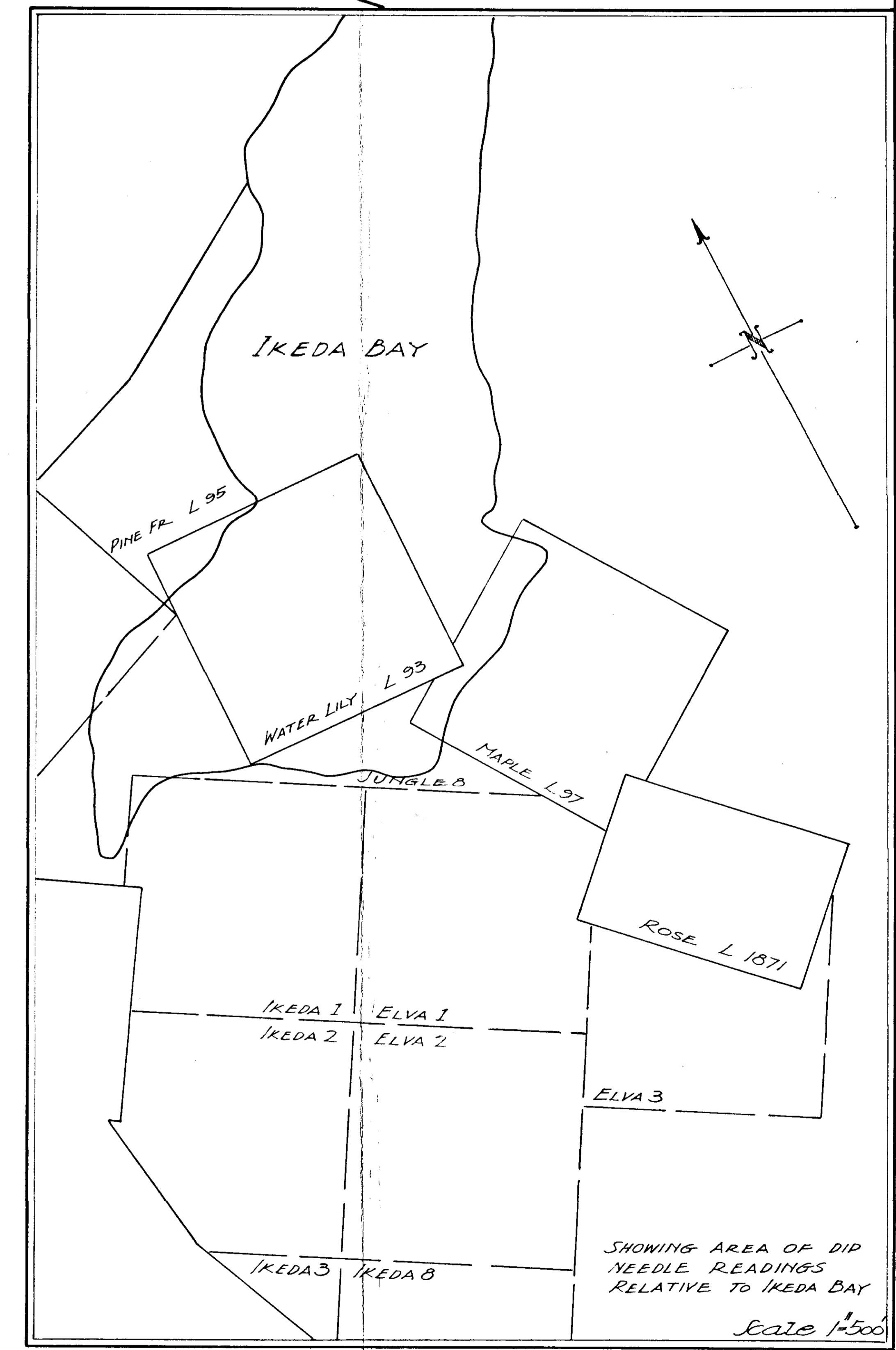
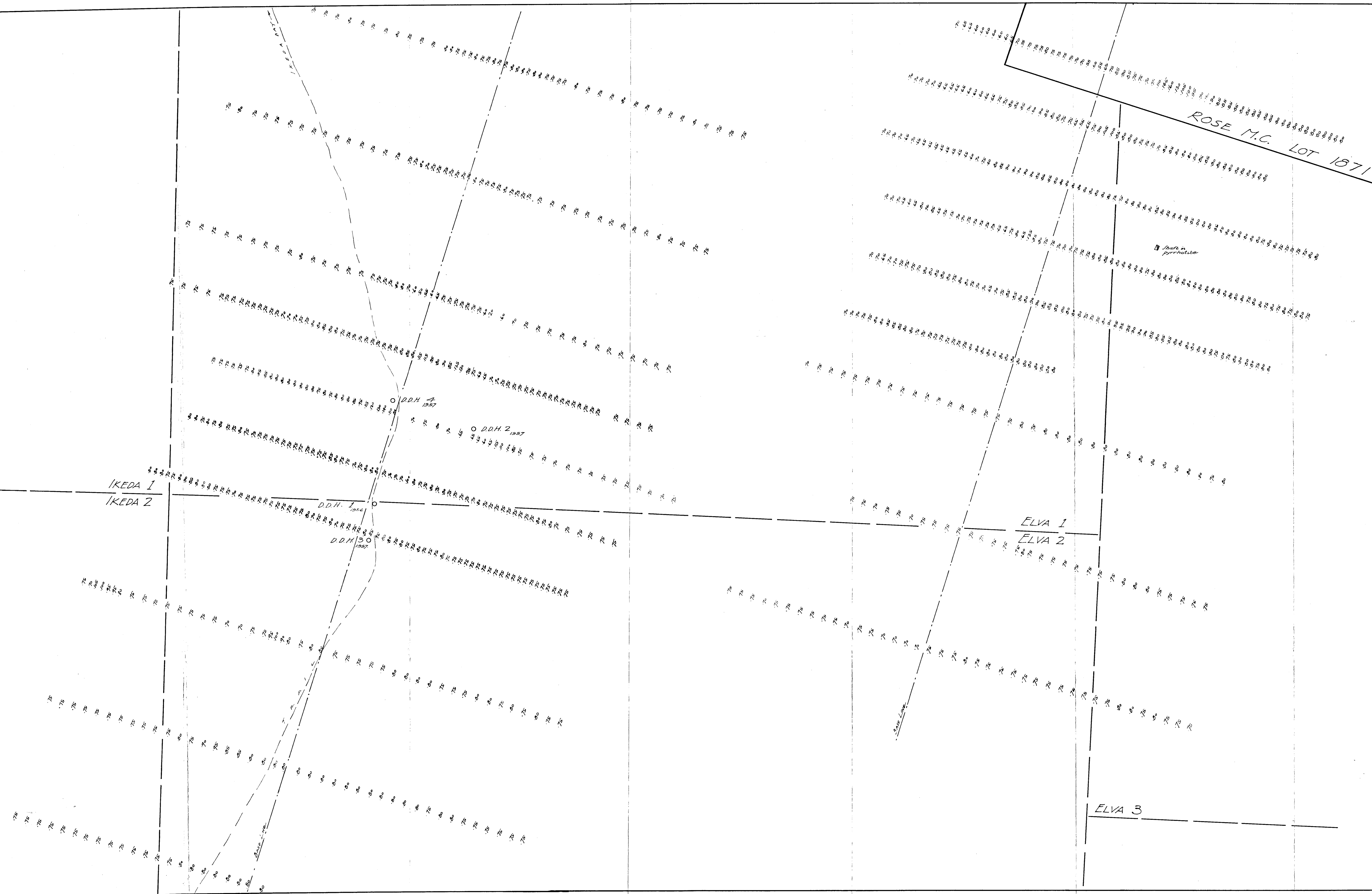
Experienced Prospector and miner employed two seasons with St. Eugene Mining Corporation Ltd. NPL.

Yours very truly,

ST. EUGENE MINING CORPORATION LIMITED N.P.L.


Chas. M. Campbell Jr.

CMCJr/epg.



Department of
 Mines and Petroleum Resources
 ASSESSMENT REPORT
 NO. 195 MAP #1
 AUGUST 1957
 C.M. CAMPBELL JR. P. ENG.
 M. Campbell

MAP SHOWING . . .
 DIP NEEDLE READINGS ON ELVA GROUP OF
 MINERAL CLAIMS AT IKEDA BAY IN THE
 QUEEN CHARLOTTE ISLANDS
 SCALE 1"=50'