

TABLE OF CONTENTS

Summary Report on "The Geological Exploration, Abbott Lake",
by T. Lisle 2 pages.

| | <u>Page</u> |
|------------------------|-------------|
| Introduction | 1 |
| Surveying and mapping | 1 |
| Geological prospecting | 1 |
| General geology | 2 |
| Specimens | 2 |

Geological Map - Kamloops Copper Company.

Report on "Magnetometer Survey of Selected Areas at Abbott Lake",
by R. W. Foster 3 pages.

| | <u>Page</u> |
|--------------------------------------------|-------------|
| Introduction | 1 |
| Regional background | 1 |
| Notes on the specific areas - Area 1 and 2 | 1 |
| Area 2 (continuation) | 2 |
| Area 4, 5, 6, 7 | 2 |
| Area 8 | 3 |
| Miscellaneous areas | 3 |
| Conclusion | 3 |

Drawing on "Magnetometer Survey - Selected Areas"
Kamloops Copper - Abbott Lake.

| |
|----------------------------------------------------------------------------------------------------------|
| <p>Department of Mines and Petroleum Resources ASSESSMENT REPORT NO. <u>407</u> MAP.....</p> |
|----------------------------------------------------------------------------------------------------------|

SUMMARY REPORT
on
THE GEOLOGICAL EXPLORATION
ABBOTT LAKE

by: T. Lisle

August 15th, 1961.

SUMMARY REPORT
ON
THE GEOLOGICAL EXPLORATION
AT ABBOTT LAKE, B.C.

INTRODUCTION

Geological exploration was carried out on 110 mineral claims situated at Abbott Lake, B. C. through the months of May, June and July, 1961.

The program included a Brunton and chain survey, and a rough geological and prospecting survey of the entire property. As a result of that field work it was recommended that a magnetometer survey of selected areas of the property be carried out.

SURVEYING AND MAPPING

The Brunton and chain survey was completed on June 29, 1961, and all plotting brought up to date on worksheet maps - scale 1" = 300'. This information, along with geological work and major topographical features, was then transferred to a master plan of the area - scale 1" = 500'.

GEOLOGICAL PROSPECTING

Geological traverses, mostly at 500 foot intervals, were made over the entire property. These traverses were tied into the surveyed claim lines which provided good map control.

- 2 -

GENERAL GEOLOGY

Galchon quartz-diorite was found to be the dominant rock on the property. It was commonly found to be of a coarse grained nature, although medium grained phases and, frequently, veins up to 6 inches of fine grained intrusives were encountered. Small veinlets of epidote up to 2 inches in width were generally found in the same areas as the latter.

No significant structural or rock changes were observed on the property other than minor variations of the quartz-diorite. Few attitudes were taken; consequently no pattern could be established to any regional jointing system that may exist.

SPECIMENS

All specimens taken during the program were laid out on a 4 ft. x 8 ft. wooden map of the property. This is now at Kamloops, in the care of Kamloops Copper Company, and should be kept for any future reference to the area.

H. HILL & L. STARCK & ASSOCIATES LTD.


Y. Lisle.

TL/mjr

R E P O R T
on
MAGNETOMETER SURVEY
of
SELECTED AREAS AT ABBOT LAKE

by: R. H. Foster

August 7th, 1961.

R E P O R T

on

MAGNETOMETER SURVEY**OF SELECTED AREAS AT ABBOTT LAKE (KANLOOPS COPPER)****INTRODUCTION**

The property was visited on two occasions totalling five days. Grids of 100 foot centers were laid over those areas where magnetic deviation was encountered during previous Brunton traverses. Similar grids were laid over areas where a previous dip needle survey encountered anomalies.

REGIONAL BACKGROUND

Random readings were taken across the property and these, together with a study of the readings encountered on the grids, established background to be 54,800 gammas.

NOTES ON THE SPECIFIC AREAS

(Refer to map 1" = 300')

Area (1)

- Approximates the location line of Viking 7 and 8.
- Flat
- Highest reading: 56415 gammas (1615 gammas above b'ground)
- Lowest reading: 54710 gammas
- 1705 gammas (maximum difference)

Area (2)

- Viking 9, 11 and 13.
- Flat over most of its area except for a small area on Viking No. 9 where an anomaly of 2600 gammas above background was recorded. This anomaly, unlike all others in the survey, was not associated with an outcrop and hence holds some interest. Note that this anomaly is contoured at 500 gamma intervals rather than the otherwise uniform 200 gammas.

REPORT ON MAGNETOMETER SURVEY (Continued)Area (8)

- Approximates location line of K.C. #25 and #26 with a small grid in K.C. #23.
- The minor anomaly recorded in this region can be attributed entirely to a very prominent granite outcrop. It is otherwise flat especially on the grid on K.C. #23.
- Highest reading: 58690 gammas (890 gammas above b'ground)
Lowest reading: 54540 gammas
1150 gammas (maximum difference)

Miscellaneous Areas

- Readings were taken at and around three small cuts in granite adjacent to the camp road (at Station 138). These readings were all very similar and averaged 55180 gammas (or 380 gammas above background).

CONCLUSION

Although outcrops are relatively scarce they tend to be prominent when they do occur, and all anomalies except one (as noted) appear to be due to this type of topography. Since the 2600 gamma anomaly in Area (2) does not appear to follow this trend, and is the highest recorded it may justify further brief investigation.

A map "Magnetometer Survey", scale 1" = 300', accompanies this report.

H. HILL & L. STARCK & ASSOCIATES LTD.

Henry L. Hill
Henry L. Hill

R. W. Foster
R. W. Foster

SECTION

36



- All
- Quartz Diorite
 - Flot
 - S1 SLOUGH
 - MAGNETIC SURVEY AREA
 - LAKE
 - ROAD
 - STRIKE DIP
 - SPECIMENS
 - SPECIMENS CONTAINING COPPER
 - AREAS NOT OTHERWISE MARKED ARE OVERBURDEN

Department of
Mines and Petroleum Resources
ASSESSMENT REPORT
NO. 407 MAP 1

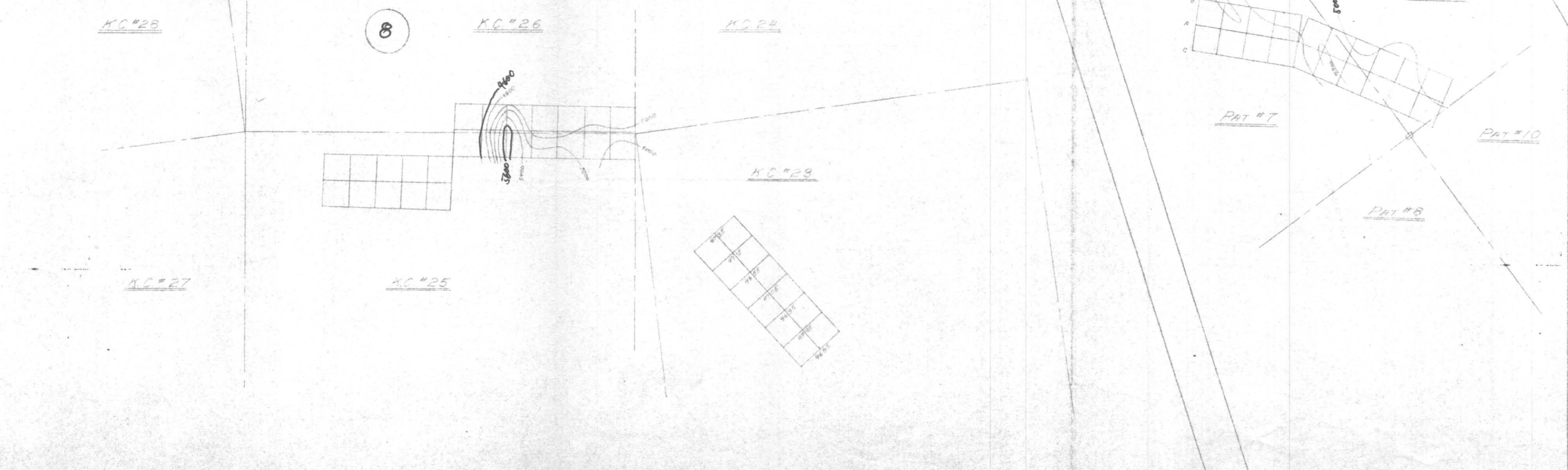
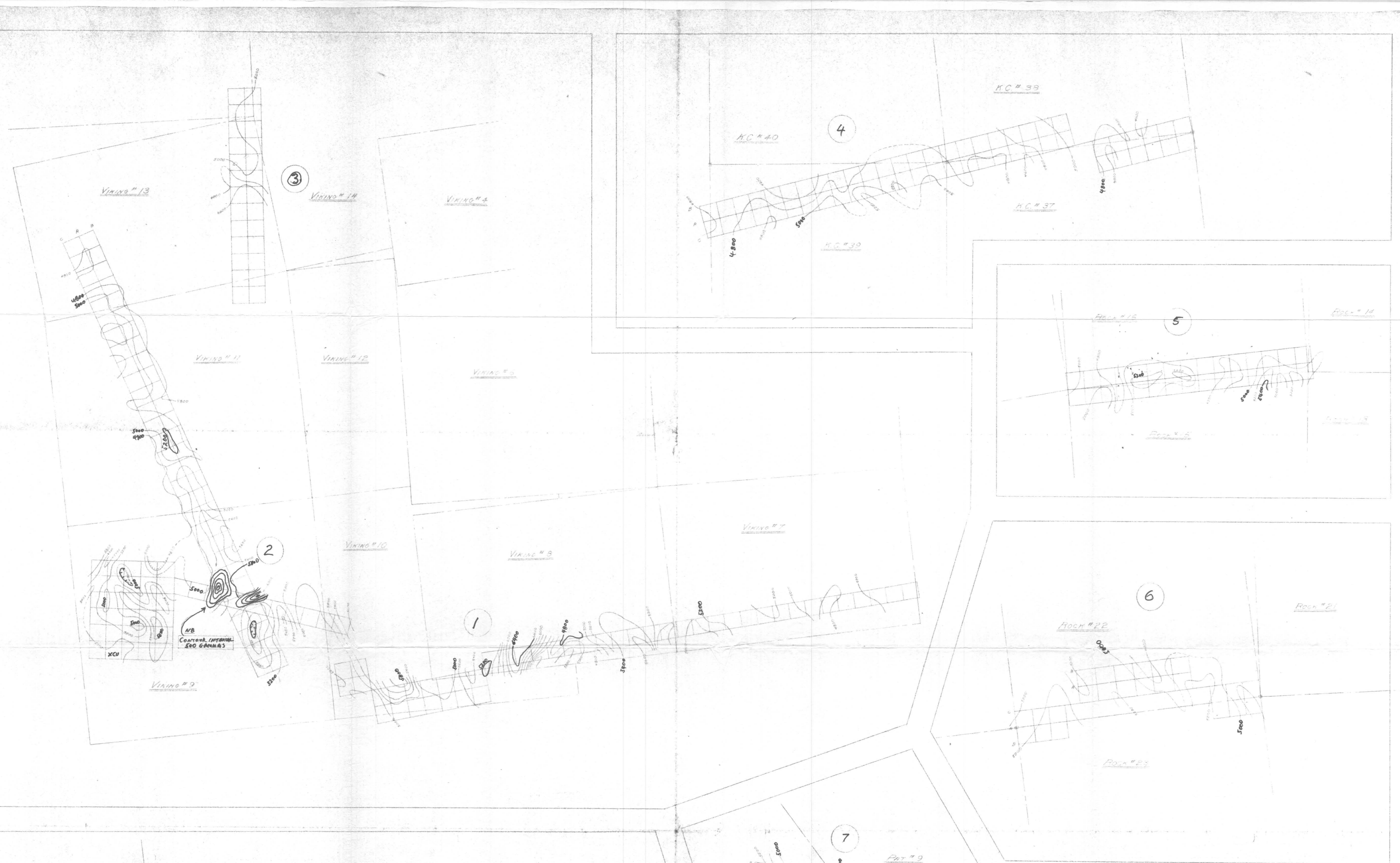
407

H. HILL & L. STARCK ASSOCIATES LTD.
KAMLOOPS COPPER LTD.
ABBOTT LAKE

| | | |
|---------------|---------------|--------------|
| Scale: Feet | K.C. HOLDINGS | Date Revised |
| Date: 10/1/61 | N° 1 | |
| Drawn: A.L.L. | | |
| Traced: | | |

Note: portions of PAT N°s out of White and Pendlebury N°1, N°2 are assumed only

Date: 1961



Department of
Mines and Petroleum Resources
ASSESSMENT REPORT
NO. 407 M.P. 2

H. HILL & L. STARCK & ASSOCIATES LTD.
KAMLGOPS COPPER
- ABBOTT LAKE -
MAGNETOMETER SURVEY
SELECTED AREAS
MAGNETIC CONTOUR INTERVAL = 200 GAMMAS (EXCEPT
ONE LOCATION AS NOTED)
BACKGROUND - 54,800 G
Add 54,000 G TO PLOTTED VALUES
DRAWN - RWF DATE JULY 24 '61 SCALE: 1" = 300'

407
M2