

421

KERR-ADDISON GOLD MINES LIMITED

SELF-POTENTIAL SURVEY

OWL	5 - 12)		<u>Owner</u>
)		
NADINA	1 - 4)	MINERAL CLAIMS	W. F. McGowan,
)		3262 Marine Drive,
ANGUS	1 - 4)		West Vancouver, B. C.

LOCATED AT S. E. END OF OWEN LAKE

26 MILES SOUTH OF HOUSTON, B.C.

IN THE

OMINECA MINING DIVISION

54° - 126° S. W.

BY

W. M. SIROLA, P.Eng.

JULY 12th, 1962.

TABLE OF CONTENTS

	<u>Page</u>
1. Introduction	1
2. Schedule of Claims Covered by the Report..	2
3. Statutory Declaration of Costs	3
4. Self-Potential Survey	4
5. Interpretation of Self-Potential Results..	4 & 5
6. Conclusions	5
7. Schedule of Accompanying Maps	6

<p>Department of Mines and Petroleum Resources ASSESSMENT REPORT</p> <p>NO. <u>421</u> MAP</p>
--

I N T R O D U C T I O N

The McGowan claims are located on the South contact of a stock of micro diorite which intrudes volcanics of the Hazelton series.

Work in previous years at the old Owen Lake Mine has revealed the presence of numerous veins of chalcopyrite-sphalerite and sphalerite-galena. Gold was found associated with the former and silver with the latter.

The self-potential survey of the McGowan claims was undertaken in the Fall of 1961 with the hope of locating larger mineralized structures than had been found previously.

The survey covered 16 claims and included topographic and geological mapping.

SCHEDULE OF CLAIMS COVERED BY THE REPORT

<u>OWL CLAIMS</u>	<u>RECORD NO:</u>	<u>DATE:</u>
5	12691 H	July 15, 1962.
6	92	"
7	93	"
8	94	"
9	95	"
10	96	"
11	97	"
12	98	"

NADINA CLAIMS

1	12780 K	Aug. 17, 1962.
2	81	"
3	82	"
4	83	"

ANGUS CLAIMS

1	12856 M	Sept. 16, 1962.
2	57	"
3	58	"
4	59	"

DOMINION OF CANADA:
 PROVINCE OF BRITISH COLUMBIA.
 To Wit:

In the Matter of

THE SELF-POTENTIAL SURVEY OF THE:

OWL 5 - 12)
 NADINA 1 - 4) MINERAL CLAIMS
 ANGUS 1 - 4)

OMENICA MINING DIVISION

I, WILLIAM M. SIROLA

of 319 - 409 Granville Street, Vancouver 2, B. C.

in the Province of British Columbia, do solemnly declare that the following is a true and accurate statement of costs involved in above Survey.

COST STATEMENT

<u>NAME:</u>	<u>JOB</u>	<u>PERIOD WORKED</u>	<u>DAYS</u>	<u>RATE</u>	<u>TOTAL</u>
Williamson: T.	Technician	July 20/Sept. 28	33	\$18.00	\$ 594.00
Elliott: N.	Technical Asst.	" "	33	\$14.00	462.00
Sirola: W. M.	Supervisor	" "	10	\$30.00	300.00
					<u>\$ 1,356.00</u>

SCHEDULE OF LABOUR DISTRIBUTION

<u>LINE CUTTING & CHAINING:</u>	Technician	10 Shifts @ \$18.	\$ 180.00
	Technical Assistant	10 Shifts @ \$14.	140.00
<u>SELF-POTENTIAL SURVEY:</u>	Technician	23 Shifts @ \$18.	414.00
	Technical Assistant	23 Shifts @ \$14.	322.00
<u>SUPERVISION:</u>	Exploration Geologist	10 Shifts @ \$30.	300.00
			<u>\$ 1,356.00</u>

SUMMARY OF TOTAL COSTS

Wages & Salaries	\$ 1,356.00
Camp Operating	315.00
Motor Vehicle Operating	<u>165.00</u>
	<u>\$ 1,836.00</u>

And I make this solemn declaration conscientiously believing it to be true, and knowing that it is of the same force and effect as if made under oath and by virtue of the "Canada Evidence Act."

Declared before me at the
 of Vancouver, in the
 Province of British Columbia, this 23rd
 day of July, 1962, A.D.

Gold Commissioner

*A Commissioner for taking Affidavits within British Columbia or
 A Notary Public in and for the Province of British Columbia.*

SELF-POTENTIAL SURVEY

A 6,000' base line was run on a bearing of N. 30^o W. and cross lines were then cut at 400' intervals normal to the base line. Chainage markers were placed at 100' intervals along all of the lines.

The instrument used was a standard galvanometer-type potentiometer supplied by Crone Geophysics of Toronto: The non-polarizing electrodes were connected through 2,000' of flexible insulated wire wound on a reel.

The North West end of the base line was assigned a value of zero millivolts and all of the readings were adjusted to this base for contouring purposes. Readings were taken at 100' intervals throughout the survey. The potentiometer, reel and one electrode were kept fixed while the other electrode was advanced. While the operator took the reading, the assistant took a barometric reading so that topographic data were collected simultaneously with electrical data. Any outcrop seen was examined and its location noted.

INTERPRETATION OF SELF-POTENTIAL RESULTS

Only one significant anomaly was found in the course of the survey. This anomaly occurs in the North West corner of Owl #9 M. C. and corroborates the information developed by Farwest Mining Ltd. who found/

Interpretation of Self-Potential Results (Cont'd)

found an anomaly on Owl #4 M. C. in 1959. This anomaly was subsequently found to be caused by the presence of 10% pyrite in highly propylitized micro-diorite. No economic mineralization was found.

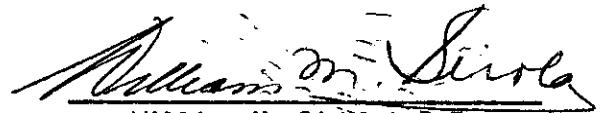
Potential differences of less than 50 millivolts are not considered diagnostic unless they show some type of consistent pattern.

CONCLUSIONS

No economic mineral deposits were found. The method used is capable of locating areas of disseminated pyrite wherein the pyrite content does not exceed 10% of the rock mass. Conditions on the McGowan claims were ideal for the Self-Potential type of survey because overburden in general is less than 5' deep.

The narrow discontinuous veins in the micro-diorite in this area in general are not detectable by the Self-Potential method.

July 12th, 1962.


William M. Sirola, P.Eng.

CERTIFICATE

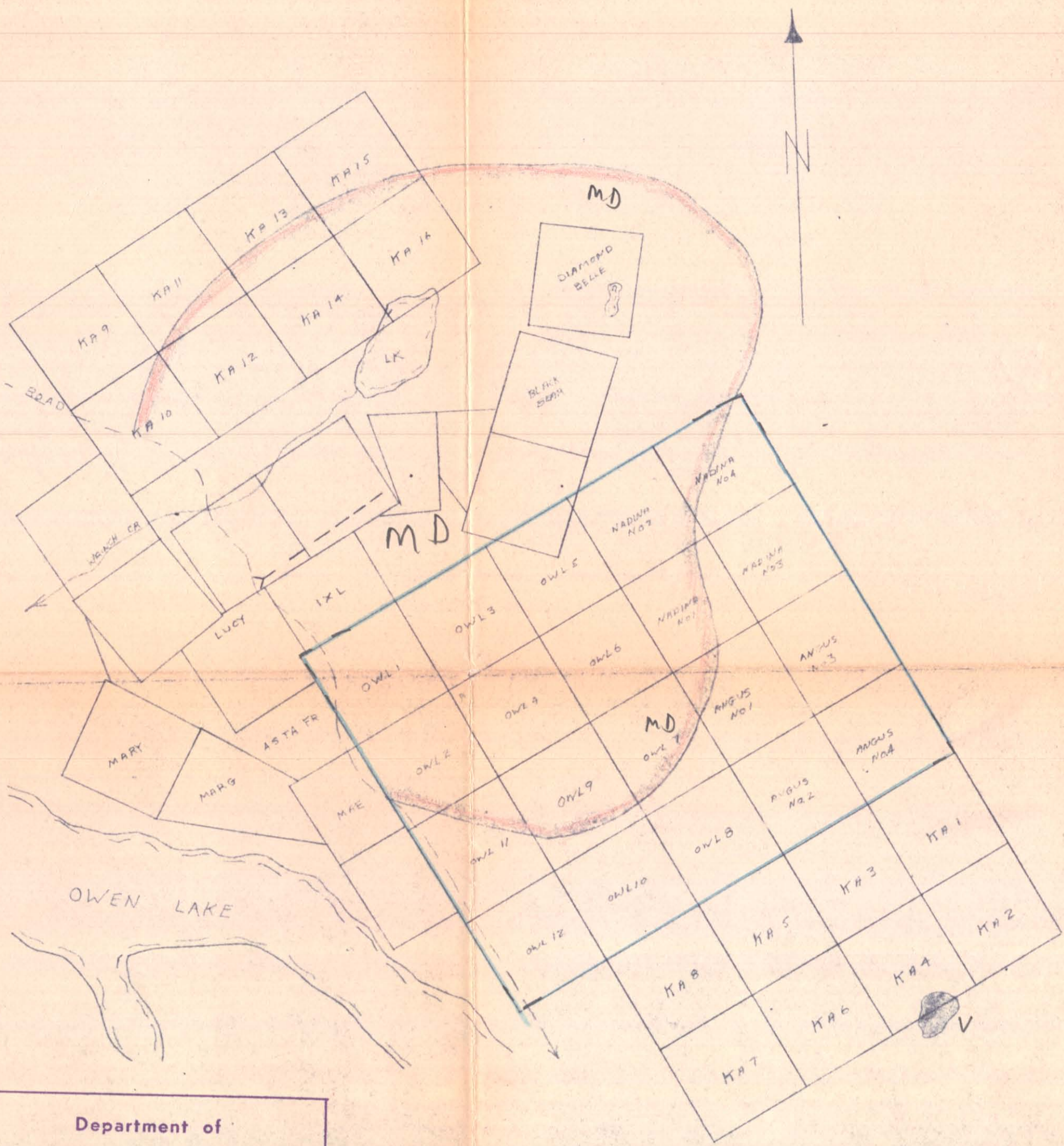
I, J. T. Williamson, of 1355 Clyde Avenue, West Vancouver,
do hereby certify that:

- (1) During the period 1958 - 1960 I was engaged as a field assistant for Farwest Mining Ltd., Suite 305 - 1075 Melville Street, Vancouver, and my work consisted of magnetic and self-potential surveys under the supervision of W. M. Sirola, P.Eng.

- (2) From April 1961 to June 1962, I have been engaged in general mineral exploration for Kerr-Addison Gold Mines of 319 - 409 Granville Street, Vancouver. My work has included magnetic and electrical surveys of various projects, again under the supervision of W. M. Sirola, P.Eng.

- (3) Prior to the above periods, I worked for three years as a Prospector in various parts of British Columbia.


J. T. WILLIAMSON



Department of
 Mines and Petroleum Resources
 ASSESSMENT REPORT
 NO. 421 MAP 1

- MD MICRO-DIORITE STOCK
- V VOLCANIC OUTCROP
- OUTLINE OF MCBRYAN CLAIMS.

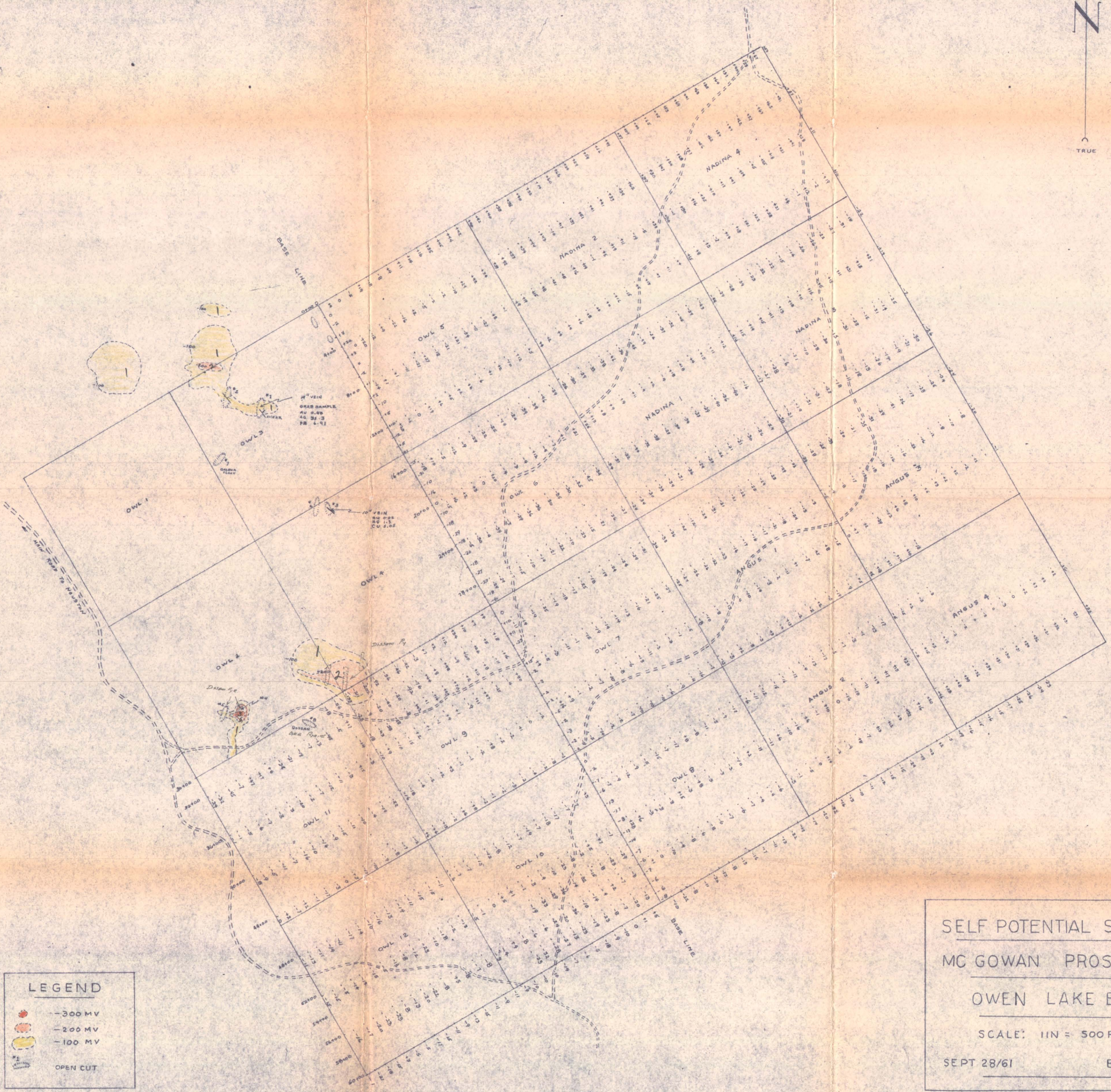
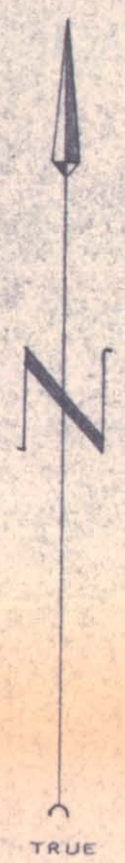
421

KEY MAP
 SHOWING
 MINERAL CLAIMS
 OWEN LAKE B.C.

JAN 30/60 T.J.W.
 REVISED JUNE 12/61

SCALE 1 IN 1500 FT





LEGEND	
	-300 MV
	-200 MV
	-100 MV
	OPEN CUT

SELF POTENTIAL SURVEY
MC GOWAN PROSPECT
OWEN LAKE BC
SCALE: 1 IN = 500 FT
SEPT 28/61 BY JTW

421

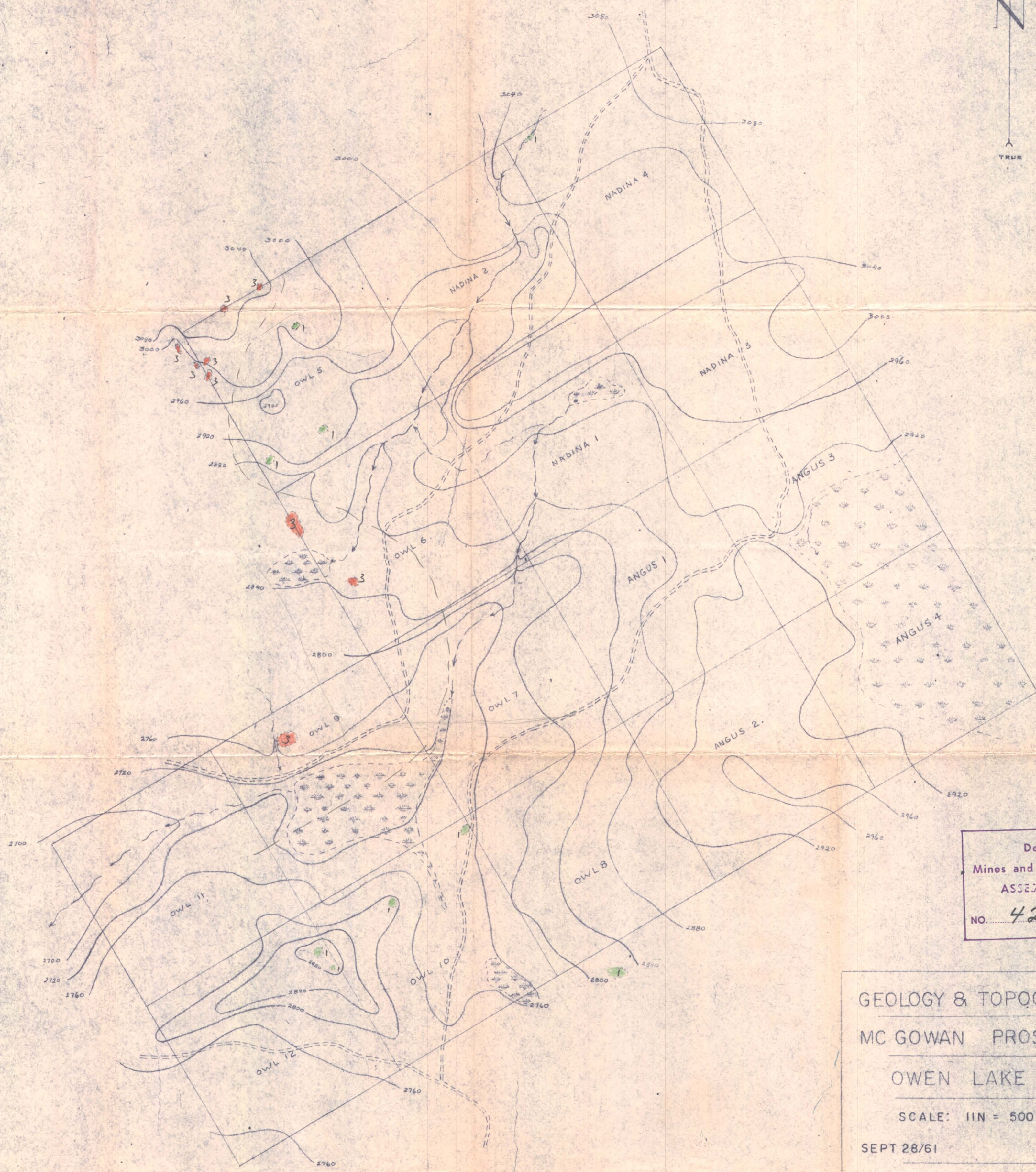
Department of
Mines and Petroleum Resources
ASSESSMENT REPORT
NO. 421 MAP 2





LEGEND

- 3 [Red square] RECENT ALLUVIUM AND GLACIAL DRIFT
- [White square] DIORITE
- 1 [Green square] ANDESITE
- [Swamp symbol] SWAMP
- [Arrow symbol] WATER COURSE



Department of
Mines and Petroleum Resources
ASSESSMENT REPORT
NO. 421 MAP 3

GEOLOGY & TOPOGRAPHY
MC GOWAN PROSPECT
OWEN LAKE BC
SCALE: 1 IN = 500 FT
SEPT 28/61 BY JTW

MB
421