

CONWEST EXPLORATION COMPANY LIMITED

GEOPHYSICAL REPORT 94L/3E

WEST CLAIMS - Lat. 58° Long. 127° S.E.

A. S. ASHTON

SUPERVISED BY W. P. HAMMOND, P. Eng., B.C.

JULY 11 to 14, 1962

00467

TABLE OF CONTENTS

467

INTRODUCTION 1

CLAIMS..... 1

LOCATION..... 1

ACCESS..... 2

TOPOGRAPHY..... 2

GEOLOGY..... 2

METHOD and INTERPRETATION of
GEOPHYSICAL SURVEY..... 2

RESULTS OF SURVEY..... 3

DATA OF SURVEY..... 4

MAP 1 - Location and Claim Map.....(In Pocket)

MAP 2 - Plan Showing E.M. Readings...(In Pocket)

Department of
Mines and Petroleum Resources
ANNUAL REPORT
NO. 467 MAP

CONWEST EXPLORATION COMPANY LIMITED

REPORT ON

WEST GROUP OF CLAIMS

FROG RIVER, BRITISH COLUMBIA

BY

A. S. ASHTON, P. ENG.

INTRODUCTION

An E-M Gun electromagnetic survey was carried out on a portion of a group of claims held by Conwest Exploration Company Limited in July, 1962.

Previous surface exploration and trenching on the claims had failed to indicate the source of hi-grade silver-lead float found there. The purpose of this survey was to attempt to locate sub-surface conductors which may be the source of this float. No conductors were located. The accompanying maps show the area surveyed and the readings obtained.

CLAIMS

The property is comprised of 20 contiguous claims recorded as follows:-

<u>CLAIMS</u>	<u>TAG Nos.</u>	<u>RECORD Nos.</u>
West 3 - 8, incl.	277551 - 56, incl.	8120 - 8125, incl.
West 13 - 20, incl.	277561 - 68, incl.	8130 - 8137, incl.
West 26 - 30, incl.	277573 - 78, incl.	8142 - 8147, incl.

LOCATION

The claims are located in the Cassiar Mountains approximately 80 miles northwest of Ware, B.C., at the head of Hals Creek. This creek flows easterly into the Frog River at a point approximately 30 miles south of that river with the Ketchika River.

ACCESS

The only means of access at present is by aircraft. A small lake, upon which an aircraft can land is situated about 9 miles east of the property. A trail leads from the lake to the Frog River, which must be crossed by raft, and thence to the property. The trail is passable only to lightly laden pack horses. Helicopter pads have been established at both the lake and the property.

TOPOGRAPHY

The property lies at the head of a glaciated valley which is bordered by rounded ridges and headed by rough peaks with elevations of 7000' and over. The maximum relief is in the area of 2000'.

Hals Creek is the sole drainage of the area.

Upper slopes and creek bottom provide the only area of rock exposure.

GEOLOGY

The property lies near the north east margin of the Cassiar batholith in a group of metamorphosed sediments. These sediments (?), chlorite and sericite schists strike generally north east with dips to the north west. To the south the rocks are predominately granitic.

METHOD and INTERPRETATION of GEOPHYSICAL SURVEY

The Electromagnetic Gun equipment, manufactured in Sweden by ABEM company, was used for this survey. It employs two coils wound on staffs with ferrite cores powered by a transistorized oscillator with two frequencies of 880 cps. and 3520 cps. The in-phase and out-of-phase components of the vertical secondary field are measured and expressed directly in percentage change from a normal field.

Readings were taken at 100 foot intervals along previously picketed lines.²
The distance between transmitting and receiving coils was maintained at 200 feet.

²The lines were run in various directions over the overburdened area well up into the surrounding hills until visible or other barren rock was identified.

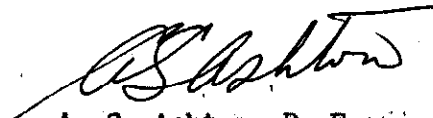
The typical curve over a steeply dipping conductor shows a rise (positive) when approaching the conductor, followed by a low (negative-greater than 5%) when the conductor is between the coils. A second rise occurs when both coils are beyond the conductor. Both the in-phase and out-of-phase components usually produce the same general shape of curve. The ratio of the two components indicates the relative conductivity of the conductor.

A ratio of $\frac{\text{in phase}}{\text{out-of-phase}}$ readings greater than 4 indicate a high conductivity, usually a massive sulphide body. A ratio of 2 or lower indicates a relatively poor conductor, typical of graphitic zones. As graphite is often a poorer conductor than sulphides, the ratio of the two components often helps to indicate the nature of the conductor.

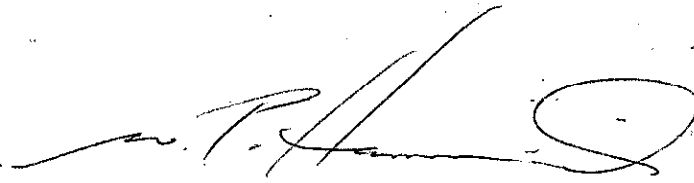
RESULTS OF SURVEY

Although the ground was thoroughly covered including all of the existing tranches and their environs, as well as the enclosing hills no anomalous readings, other than those caused by terrain effect, were noted.

Respectfully submitted,


A. S. Ashton, P. Eng.,

Toronto, Ontario
January 16, 1963.


W. P. Hammond, P. Eng., B.C.

Toronto, Ontario
January 16, 1963.

CONWEST EXPLORATION COMPANY LIMITED

DATA OF SURVEY FOR ASSESSMENT WORK

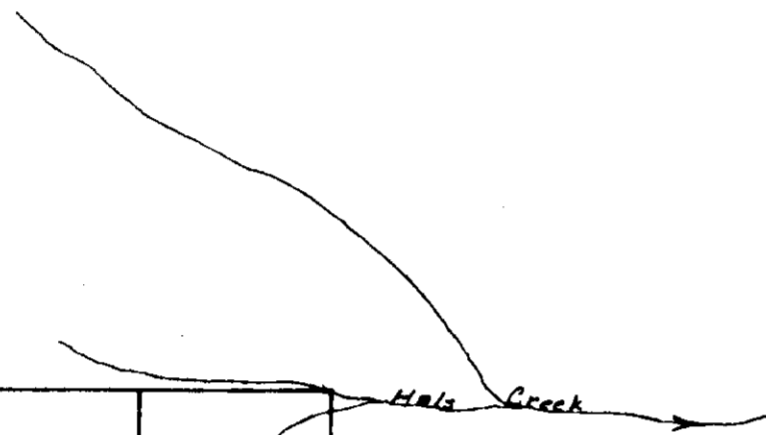
lines picketed: 6.83 mi.
No. of readings....., 361
Area covered .. West 3 - 6, Tag Nos. 277551 to
277554, incl.

P E R S O N N E L

A. S. Ashton - Operator - July 11 - 14, 1962
Jan. 6 - 7, 1963

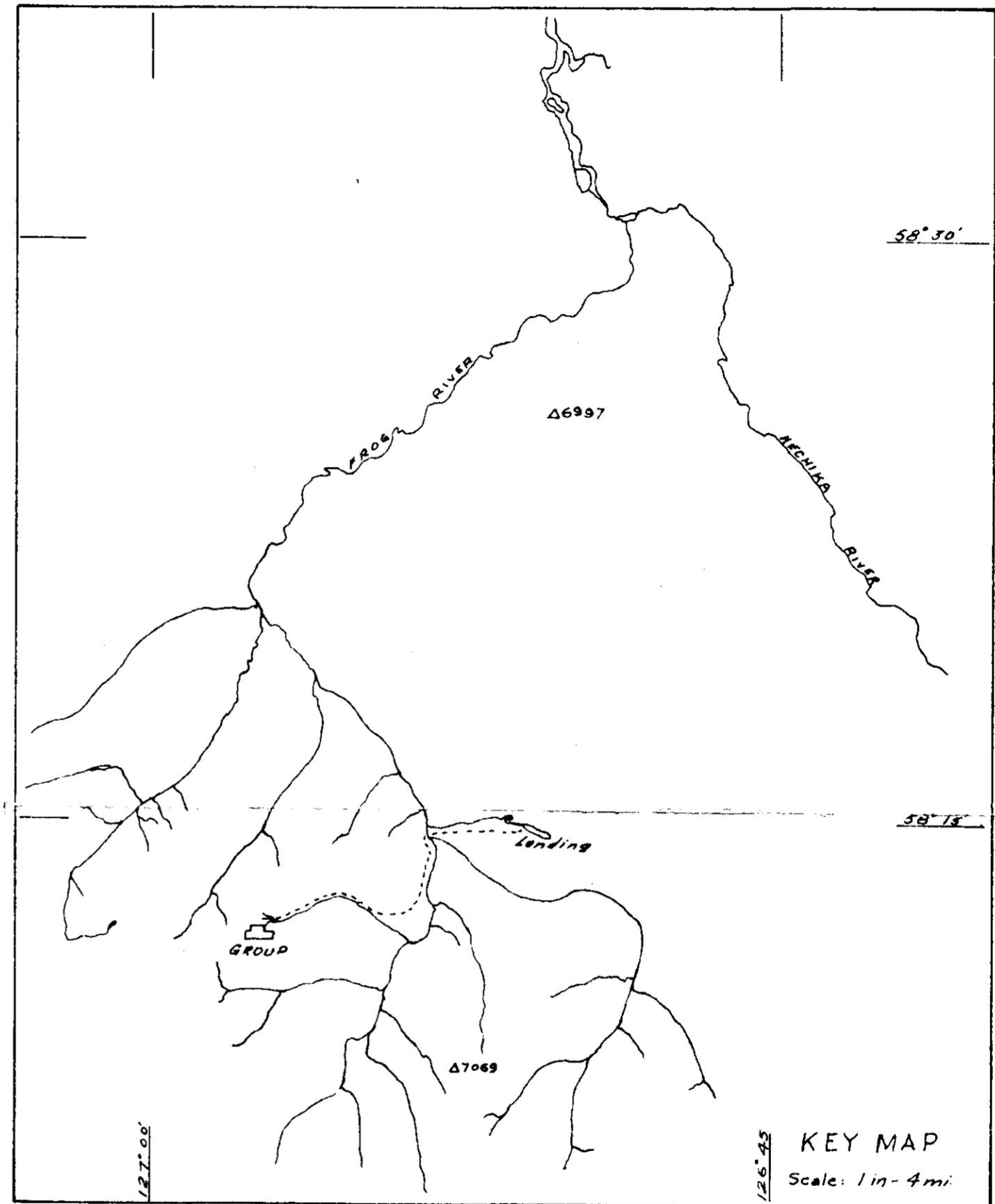
G. Tough - Helper - July 11 - 14, 1962

M. Martin - Helper - July 11 - 14, 1962



		4 277552	3 277551		
26 277574	25 277573	6 277554	5 277553	14 277562	13 277561
28 277576	27 277575	8 277556	7 277555	16 277564	15 277563
30 277578	29 277577	20 277568	19 277567	18 277566	17 277565

WEST CLAIMS
Scale: 1 in. = 1500 ft.



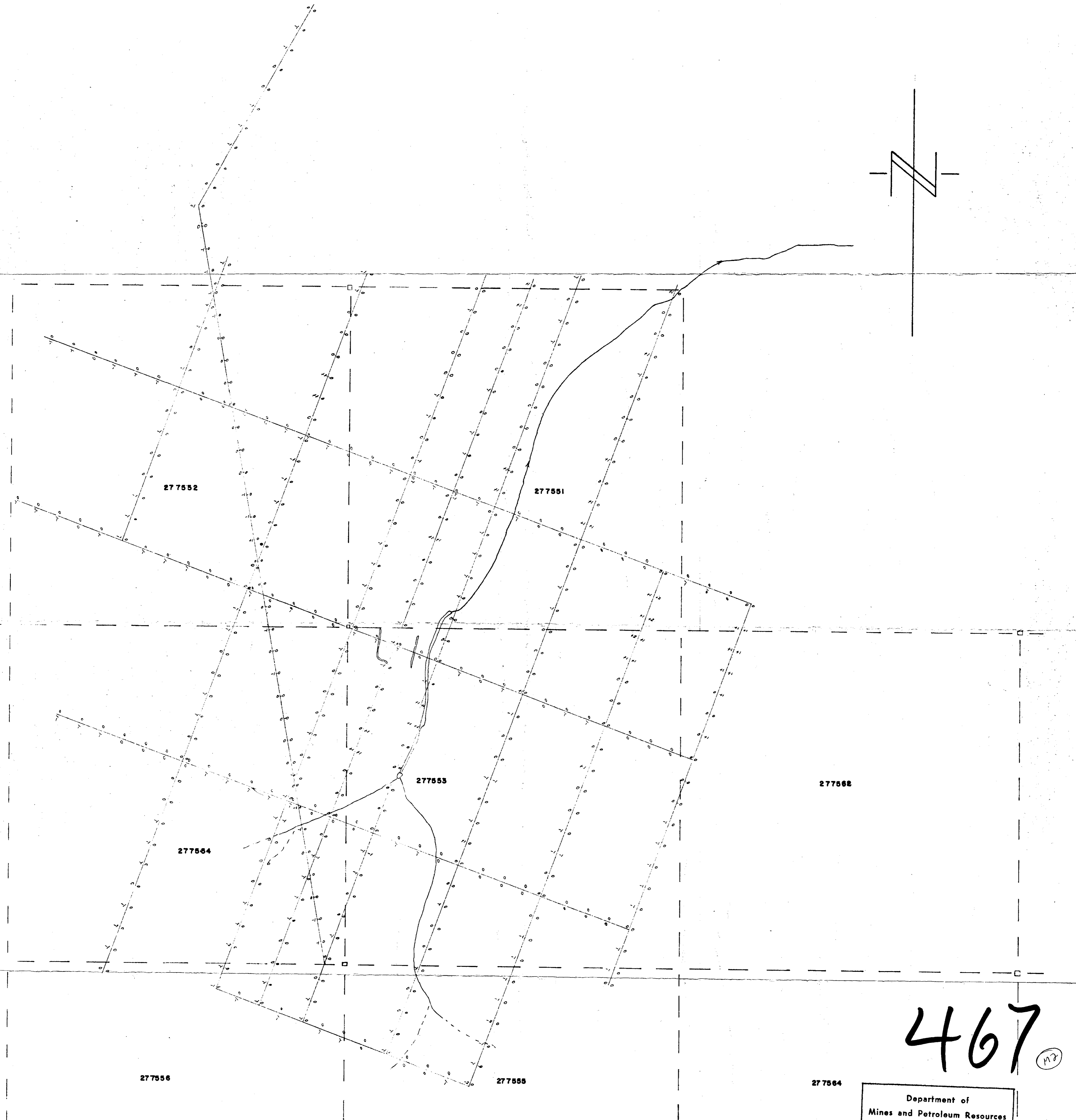
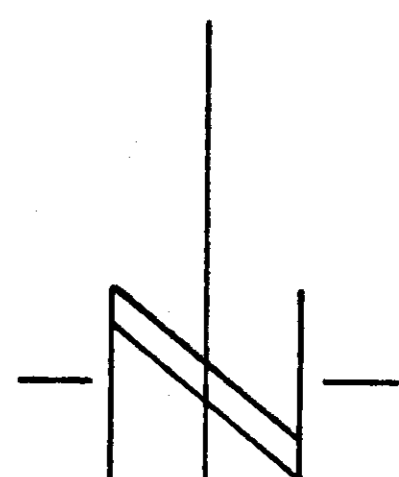
KEY MAP
Scale: 1 in. = 4 mi.

467

Department of
Mines and Petroleum Resources
ASSESSMENT REPORT
NO. 467 MAP 1

CONWEST EXPLORATION CO. LTD.
FROG RIVER AREA, B.C.

MAP 1
A.S. SMITH
Jan/63



467 (MS)

Department of
Mines and Petroleum Resources
ASSESSMENT REPORT
NO. 467 MAP 2

LEGEND

In phase on left of line
Out of phase on right of line

CONWEST EXPLORATION CO. LTD.
GEOPHYSICAL SURVEY
WEST CLAIMS
FROG RIVER AREA, B.C.

Scale 1" = 200' A. Ashton
Jan 1963