

Magnetometer Survey & Attendant Work.
Report by R. H. Janes, A.R.S.M., B.Sc.
The Sproat Mtn. Asbestos Prospect, Sidmouth,
Revelstoke M.D., B.C. 50° 117° NW.

Composed of the following claims:-
Sid. 00, 0, 1, 2, 3, 4, 5, 6, 7, & 8.
Arrow 4, 6, & 9A (all fractions)
Sproat 1, 3, 5, 6 (fraction), 7, 8 & 9.
(20 Claims in all)

82K/13W

Claims held by Canadian Johns-Manville Co. Ltd.,
of Asbestos, P.Q.

Dates of Work (including line cutting, grid
preparation & magnetometer, topographical &
barometer surveys):-

May 10th. to June 9th. inclusive
& July 24th. - October 17th. inclusive.

00470

T A B L E O F C O N T E N T S.

Introduction.

Magnetometer Survey.

Interpretation of Magnetometer Survey.

Magnetometer Survey - Costs.

Line Cutting & Grid Preparation. Methods & Costs.

Topographical Survey. Method & Costs.

Barometer Survey. Method & Costs.

Final Cost Sheet.

Personnel.

Maps:-

Location and Grid Reference Map - shows departure position. /

Magnetic Intensity Values - Vertical Field	Sheet	13	2
" " " " "	"	18	3
" " " " "	"	13-6	4
" " " " "	"	13-11	5
" " " " "	"	13-14	6
" " " " "	"	13-15	7
" " " " "	"	18-2	

Topographical Contours	"	13-11
" "	"	13-14

Map Showing Claim Distribution

Department of Mines and Petroleum Resources ASSESSMENT REPORT	
NO. 470	MAP

I N T R O D U C T I O N .

A detailed magnetometer survey was performed on these claims for the following purposes.

- a. To outline the known ultra-basic body.
- b. To outline any other unknown ultra-basic bodies which might occur "on the cutgrid".
- c. To outline those portions of the ultra-basic body which carry unusually high concentrations of magnetite.
- d. To outline the general shape of the magnetic field about the ultra-basic body.

Prior to performing the magnetometer survey a grid was laid out and cut across a selected area.

Areas of irregularity in the magnetic field at the surface due to variations in the terrain were outlined by a detailed topographical survey and a complimentary barometer survey.

M A G N E T O M E T E R S U R V E Y .

An Askania Torsion Magnetometer was used initially and was replaced by a Watt's Balance Variometer. Both instruments measure the vertical component of the earth's magnetic field.

In the general area of the ultra-basic body traverse lines were spaced at 100 ft. intervals. Where occurrences of chrysotile were expected, traverse lines were spaced 50 ft. intervals. Readings were taken at 25ft. intervals over the ultra-basic body and at 50 ft. or 100 ft. intervals over the surrounding sediments.

Two base stations were employed. Corrections were made for diurnal variation.

211

INTERPRETATION OF THE MAGNETOMETER SURVEY.

1. The ultra-basic body is clearly differentiated from the surrounding sediments. Magnetite carrying sediments locally show strong magnetic fields.
2. The body is indicated as dipping moderately to the east.
3. The talc-carbonate and serpentised peridotite zones are not well distinguished.
4. The fibre zones are correlatable with areas of higher magnetic intensity within the ultra-basic body.
5. Indicated extensions of the Fibre Zone are:-
 - i. North along the Base Line to Line 0+50 N
 - ii. From Line 0 00 to Line 2+00N at between 1+00 and 2+00E
6. Other possible fibre bearing areas are:-
 - i. Line 5+50 S to Line 7+00S at between 3+00 and 3+50E
 - ii. Line 4+50S at 1+50E
 - iii. Line 2+50S at 2+00E
 - iv. Line 1+00S to 10+50N at between 3+00 and 3+50E.

MAGNETOMETER SURVEY - COSTS.

Askania Magnetometer, operator C. Webb.

Period of Work: From September 1st. to 25th. inclusive
and Watts Magnetometer, operator C. Webb, assistant
R. Farness.

Period of Work: From October 10th. to 16th.

In the Field	C. Webb	24 $\frac{1}{2}$ days at	\$16.30. day	\$399.35
	R. Farness	6 $\frac{1}{2}$ days at	\$8.00. day	52.00
			Total Wages	<u>\$451.35</u>

Office Work (plotting results and contouring maps):-

C. Webb, 24 days at	\$16.30. day	\$391.20
---------------------	--------------	----------

Total Cost of Survey	
alone	<u>\$842.55</u>

And I make this solemn declaration conscientiously believing it to be true, and knowing that it is of the same force and effect as if made under oath and by virtue of the "Canada Evidence Act."
Declared before me at the

of *Nanaimo*, in the
Province of British Columbia, this *15th*
day of *February* 1963, A.D.

Rd. J. ...
Bill ...
Sub-Mining Recorder

LINE CUTTING & GRID PREPARATION - METHOD AND COSTS.

A north south trending base line was cut across the ultra-basic. Traverse lines were cut from this to cover and extend beyond the ultra-basic body. A total of 21 1/4 miles of line were cut.

The following lines were transit controlled:-

Main Base Line.

Base line #1 (1000 ft. east of main B.L.),
Line 12S, 00 to 2500E.
and Line 12N, 00 to 2500E.

All lines were turned off with the transit.

This work was initially done on contract but was completed by Company personnel.

The following is a cost break-down of the work done:-

- 1. On Contract.
 - By Alrae Exploration Ltd., Vancouver. \$542.27
 - Period of Work: May 10th - 19th (Two men)
and May 31st - June 9th (Three men)

2. By Company Personnel.

Periods of Work: May 10th - June 9th.
and July 24th - September 1st.

R. Janes	10 days	@	\$21.00 a day	\$210.00
C. Webb	21 days	@	\$16.30 a day	\$342.30
J. Kerr	35 days	@	\$13.40 a day	\$469.00
J. Binnie	2 days	@	\$13.40 a day	\$26.80
R. Farness	9 days	@	\$8.00 a day	<u>\$72.00</u>

\$1120.10

Total Wages \$1120.10

Total Cost of line cutting and grid preparation

\$1662.37

And I make this solemn declaration conscientiously believing it to be true, and knowing that it is of the same force and effect as if made under oath and by virtue of the "Canada Evidence Act."

Declared before me at the *City*)
of *Vancouver* , in the)
Province of British Columbia, this *10*)
day of *Feb.* 1963, A.D.)

R. H. Jones

Jill Suran
Sub-Mining Recorder

TOPOGRAPHICAL SURVEY - METHOD AND COSTS.

The possible fibre bearing areas of the ultra-basic were covered by a detailed topographical survey. Stadia profiles were run on the following lines:-

Main Base Line:- 700S to 700N

Lines: 700S, 650S, 600S, 550S, 500S, 450S, 400S, 350S, 300S, 250S, 200S, 150S, 100S, 50S and 00 :-

250 east to 250 west.

Lines: 100N, 200N, 300N, 400N, 500N, 600N, and 700N:-

100 west to 400 east

Datum: Magnetometer Base Station # 1 taken to be 4200 ft. above sea level.

Period of Field Work: August 31st - September 5th.

The following is a cost break down of the work done:-

Wages:

J. Kerr	7 days @	\$13.40 a day	\$93.80.
R. Farness	5 days @	\$8.00 a day	\$40.00
R. Janes	2 days @	\$25.20 a day	\$50.40
(Office)			

Total Wages \$184.20

Equipment:

Hire of stadia rod from Hughes Owens, Vancouver \$4.50

Total Cost of Survey \$188.70

BAROMETER SURVEY - METHOD AND COSTS.

Readings were taken along lines at 400 ft. intervals and at approx. 100 ft. spacings along the individual lines.

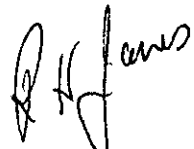
Period of Work:	October 16th. and 17th.	
Wages - R. Janes	3 days (One day draughting)	
	@ \$25.20 a day	<u>\$75.60</u>

Total Cost barometer survey \$75.60

And I make this solemn declaration conscientiously believing it to be true, and knowing that it is of the same force and effect as if made under oath and by virtue of the "Canada Evidence Act."

Declared before me at the *City*)
of *Vancouver* , in the)
Province of British Columbia, this *15*)

day of *Feb.* 1963, A.D. *Bill Turner*
Sec. Mining Recorder



FINAL COST SHEET.

Cost of magnetometer survey	\$842.55
Cost of line cutting & grid preparation	\$1662.37
Cost of topographical survey	\$188.70
Cost of barometer survey	\$75.60
Total cost of magnetometer & attendant surveys	<u>\$2769.22.</u>

PERSONNEL

R. H. Janes, Senior Geologist, Canadian Johns-Manville Co. Ltd.
1955 West 4th. Avenue, Vancouver.

Attended work from May 10th. to June 3rd.
and July 23rd. to October 21st.

C. E. Webb, Senior Field Man and Geophysical Operator,
Canadian Johns-Manville Co. Ltd., Vancouver.

J. Kerr,	1549 Western Cres., Vancouver.)	
J. Birnie,	R.R.I., Salmon Arm. B.C.)	
C. Birnie,	R.R.I., Salmon Arm. B.C.)	Field Men
R. Farness,	Sidmouth, B.C.)	

And I make this solemn declaration conscientiously believing it to be true,
and knowing that it is of the same force and effect as if made under oath and
by virtue of the "Canada Evidence Act."

Declared before me at the *City*)
of *Vancouver*) , in the)
Province of British Columbia, this *15*)
day of *Feb.*) 1963, A.D.)

R. H. Janes
R. H. Janes,
January '63.

Gill Turner
Sub-Mining Recorder

R. H. Janes.

Statement of qualifications, training and experience.

Present position:- Senior Geologist, Canadian Johns-Manville Co.Ltd.,
of Asbestos, P.Q.

Exploration Representative for B.C. and Yukon.

Training and Qualifications:-

Attended Royal School of Mines, London, Eng.(1951 - '55)

Associate of A.S.M., London.

B.Sc. (Special), Mining Geology; London University, Eng.

Junior Member of Canadian Institute of Mining and
Metallurgy.

Student Member of Institute of Mining and Metallurgy,
London, England.

Experience:-

Engaged in mine and field geology since entering
Canada in June 1955.

Employed by Canadian Johns-Manville and associated
companies since June, 1961.

R.H. Janes.

C. E. Webb.

Statement of Experience.

Position up to December 31st., 1962:

Senior Field Man and Geophysical Surveyor,
Canadian Johns-Manville Co. Ltd., Asbestos, P.Q.

Exploration Representative for B.C. and the Yukon.

Field Season 1952 and 1953, geophysical operator.

Canadian Johns-Manville Co. Ltd., Asbestos.

November 1954 - September 1955, geophysical operator.

Nucom Ltd., Toronto, Ontario.

November 1955 - June 1956, geophysical operator.

Radar Exploration Co. Ltd., Toronto.

July 1956 - April 1958, Field Man.

Canadian Johns-Manville Co. Ltd., Asbestos

April 1958 - December 1960, Partner in a contracting geophysical service.

Webb & Waters Explorations, Toronto.

January 1961 - December 1962, Senior Field Man.

Canadian Johns-Manville Co. Ltd., Asbestos.



Canadian Johns Manville Co. Ltd.,
1955 West Fourth Avenue,
Vancouver 9, B.C.

In account with

Alras Exploration Ltd.,
#5, 821 West Pender St.,
Vancouver 1, B.C.

Re. line cutting, Sproat Mountain, B.C.

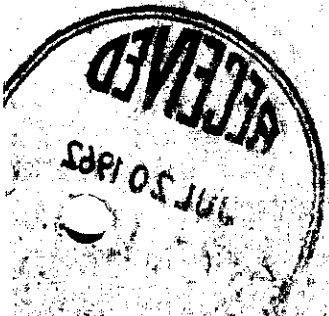
For our services rendered in line cutting as set out
by C. Webb, June 26, 1962.

Our fee-----\$542.27 —

Disbursements

Train fares (two line cutters) Vancouver to
Revelstoke-----\$33.20 \$ 33.20
\$575.47

July 19, 1962



*Jan V. L. Andrews
July 20 1962*

September 25, 1962

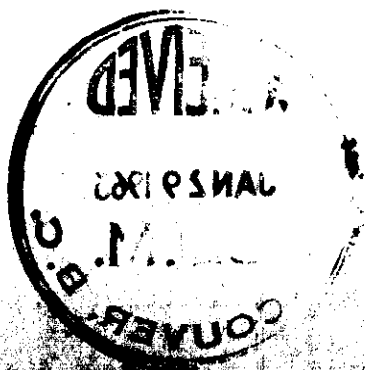
Canadian Johns Manville Co. Ltd.
1935 West 4th Avenue
Vancouver 9, B. C.

In account with

Alrae Exploration Ltd.,
#5, 821 West Pender St.,
Vancouver 1, B. C.

Re Sprout Mountain prospect

50 scale mapping of prospect, 9 days @ \$20.05	180.45	—
stereoscopic photo study, 1/2 day	10.03	
travelling expenses, 910 miles @ \$0.09/mile	81.90	
meals and accomodation	11.40	
Total	<u>\$ 283.78</u>	



Canadian Johns Manville Co. Ltd.,
1955 West 4th Avenue,
Vancouver, B.C.

in account with

Alrae Exploration Ltd.,
#5, 821 West Pender St.,
Vancouver 1, B.C.

Sproat mountain mapping October 3rd to 8th
6 days at \$20.05 per day \$120.30 -

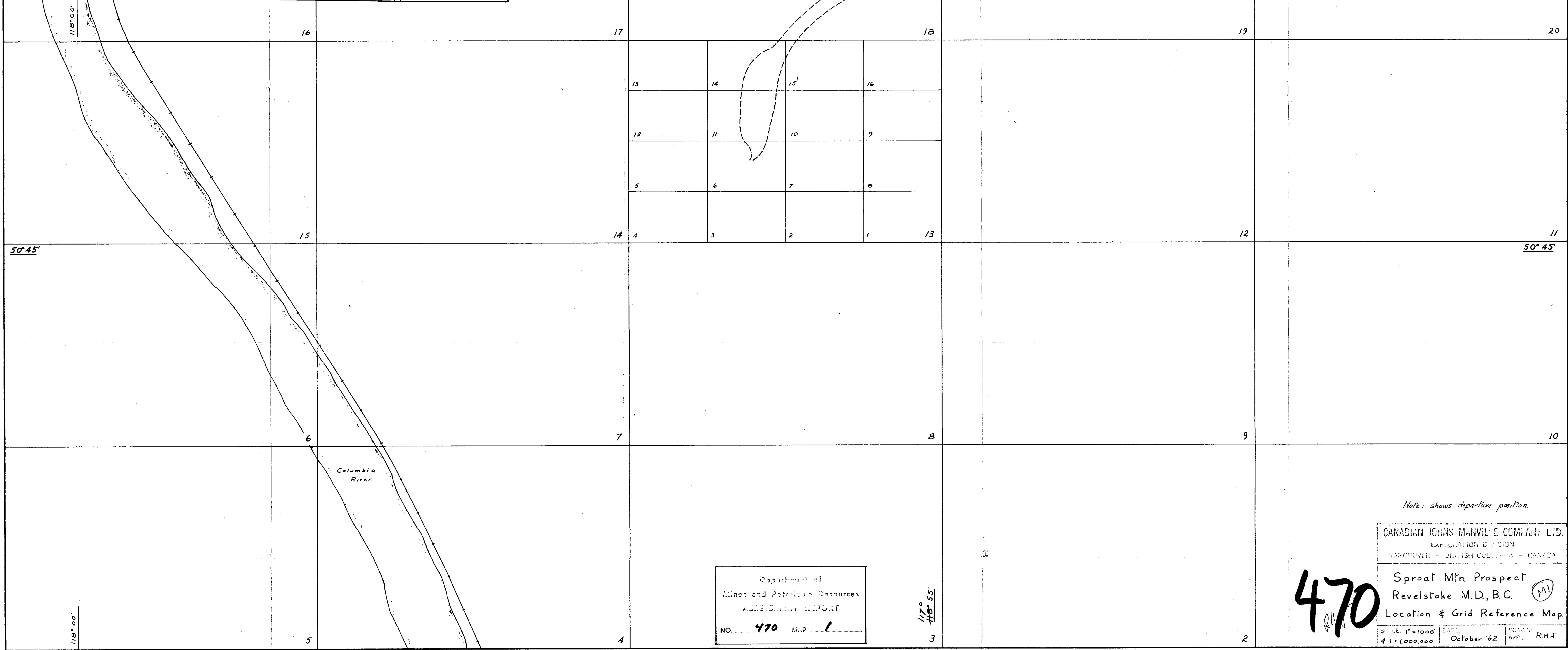
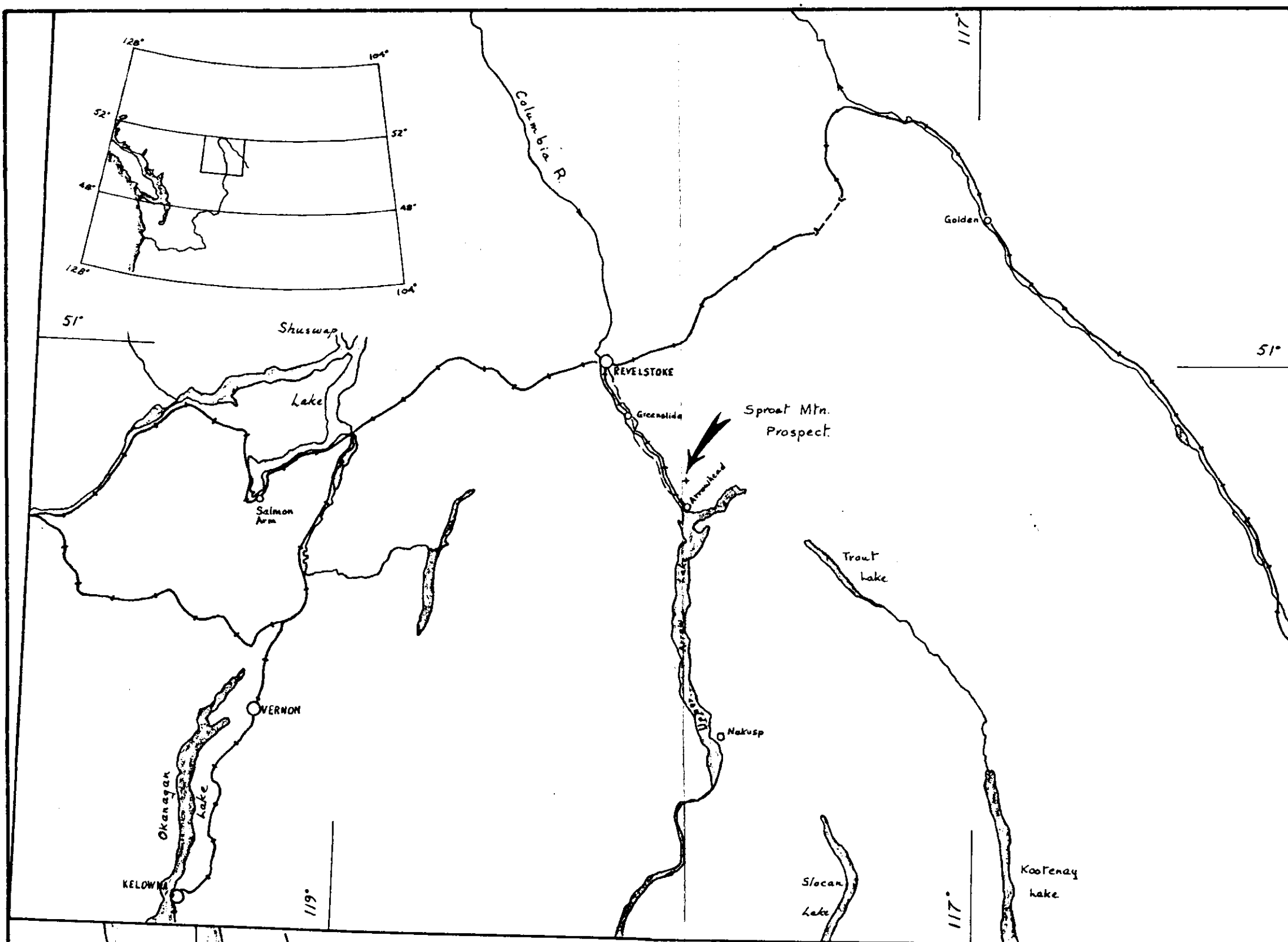
Travelling expenses 910 miles @.09/mile 81.90
motel and meals 14.00
\$216.20

October 23, 1962

Proj. 72
P.A. 14058
R.H. James



See Centre
out



Department of
 Mines and Petroleum Resources
 ASSESSMENT REPORT
 NO. **470** Map **1**

470

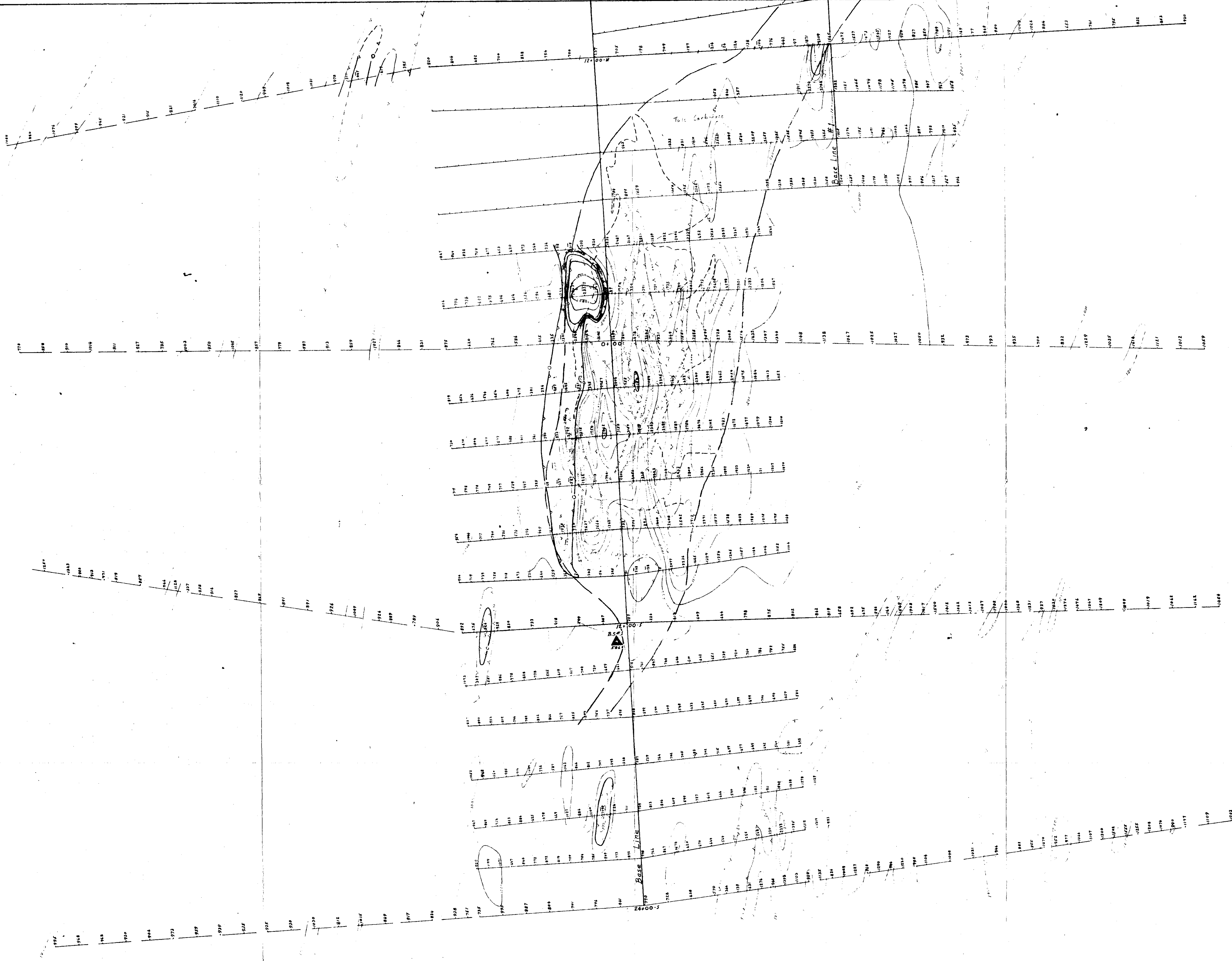
CANADIAN JOHNS-MANVILLE COMPANY LTD.
 EXPLORATION DIVISION
 VANCOUVER - BRITISH COLUMBIA - CANADA

Sproat Mtn. Prospect.
 Revelstoke M.D., B.C. (M)
 Location & Grid Reference Map.

SCALE: 1"=1000'
 1:1,000,000

DATE: October '62
 DRAWN BY: R.H.J.

Note: shows departure position.



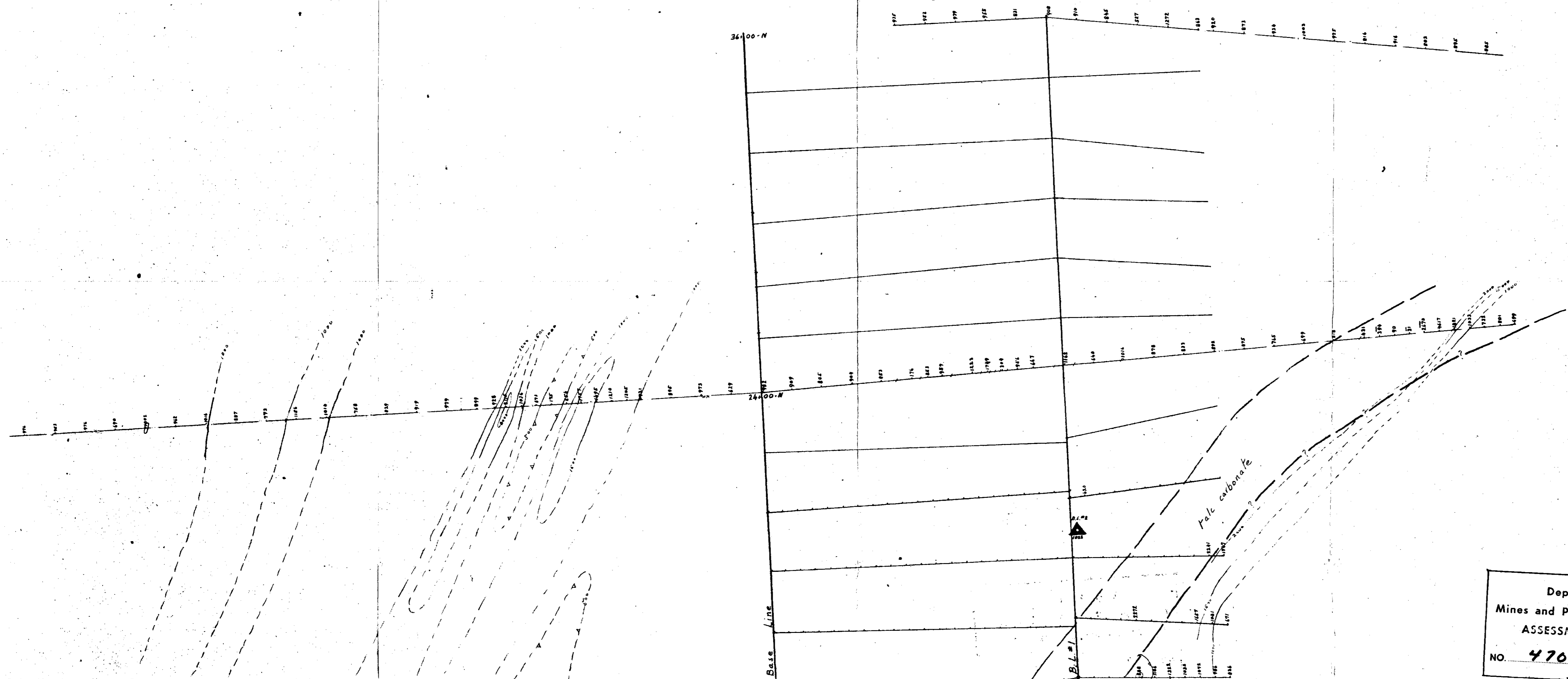
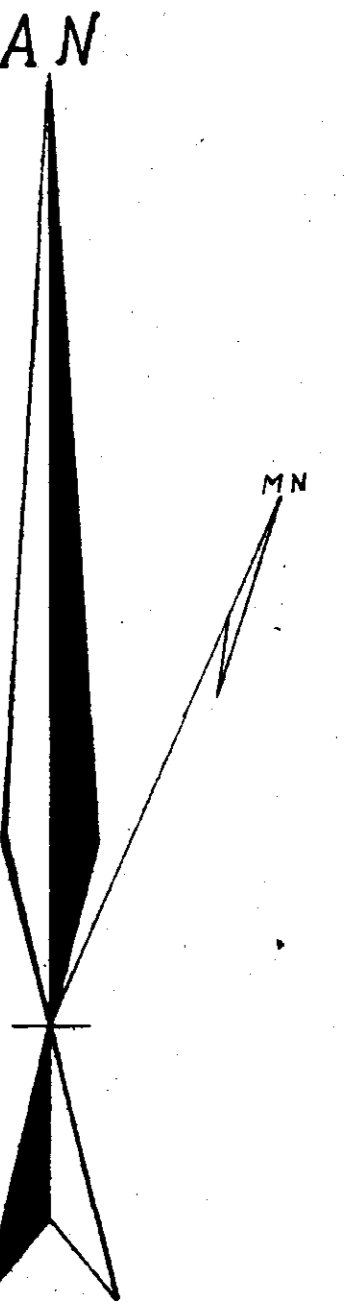
Department of
 Mines and Petroleum Resources
 ASSESSMENT REPORT
 NO. 470 MAP 2

470

Note: measurement units - gammas.

January 1963. R.M. Jones.

Magnetometer Sheet #13 Scale: 1"=200'



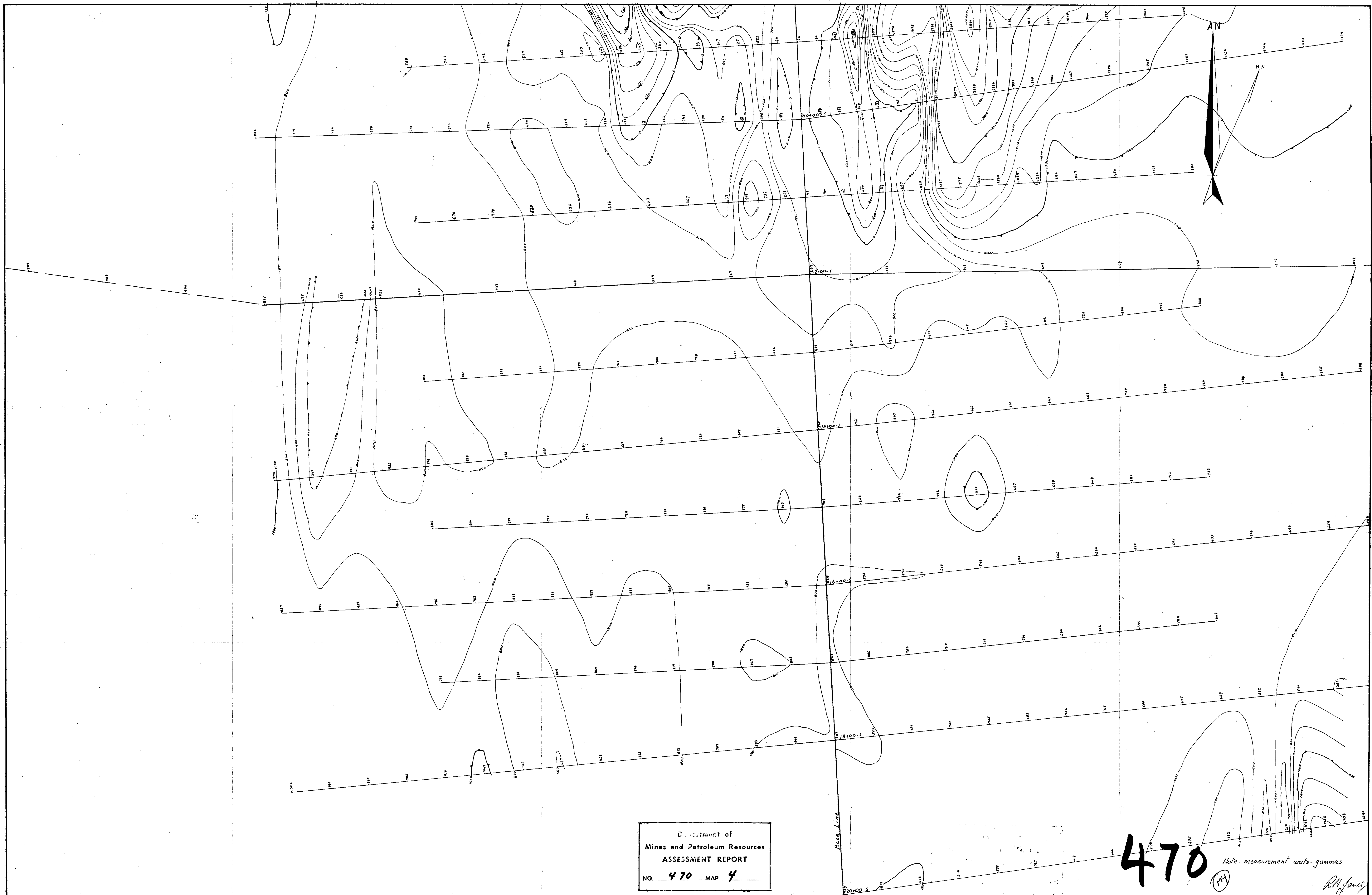
Department of
Mines and Petroleum Resources
ASSESSMENT REPORT
NO. 470 MAP 3

470

Note: measurement units - gammas.

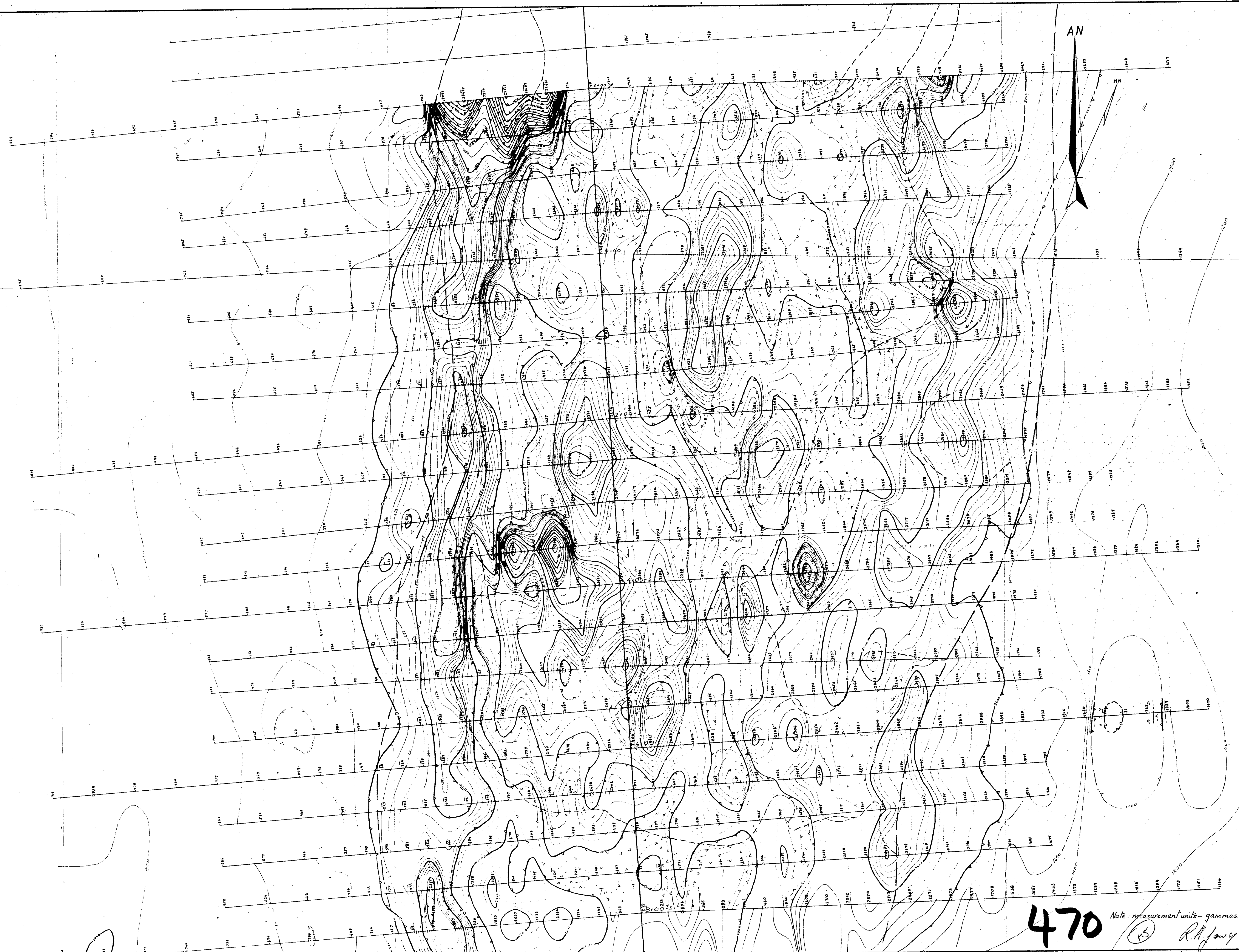
M3

R.H. Jones



Department of
Mines and Petroleum Resources
ASSESSMENT REPORT
NO. **470** MAP **4**

470 Note: measurement units - gammas.
RH James

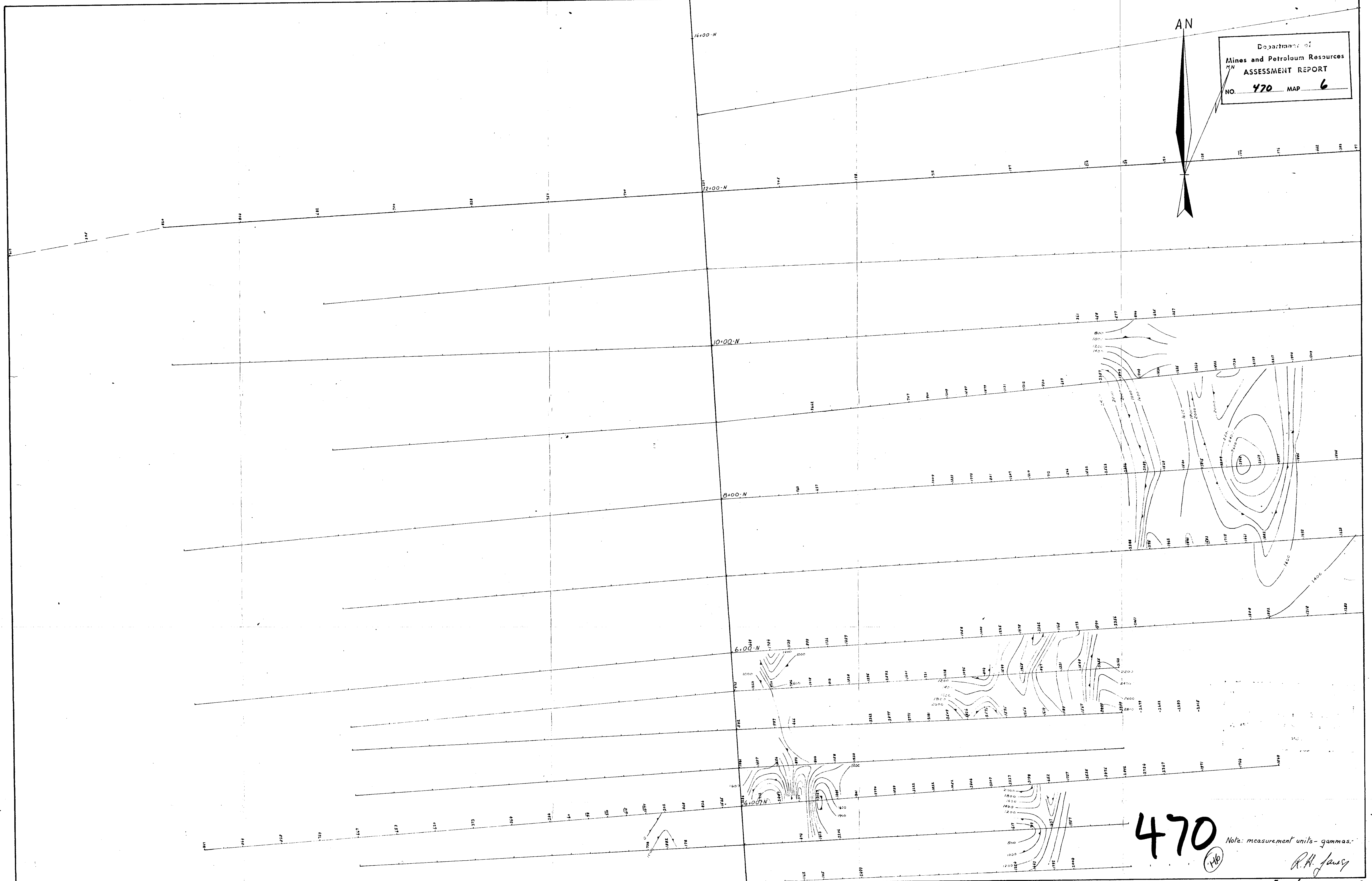
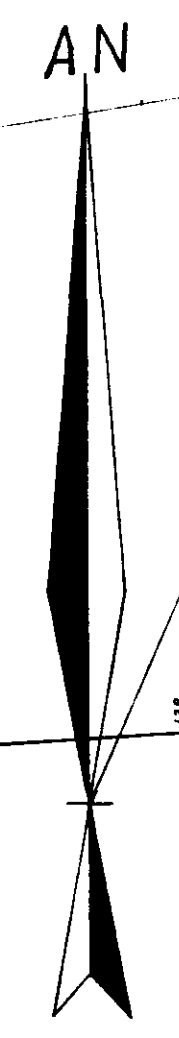


470

Note: measurement units - gammas.

(RS) R.H. Jarvis

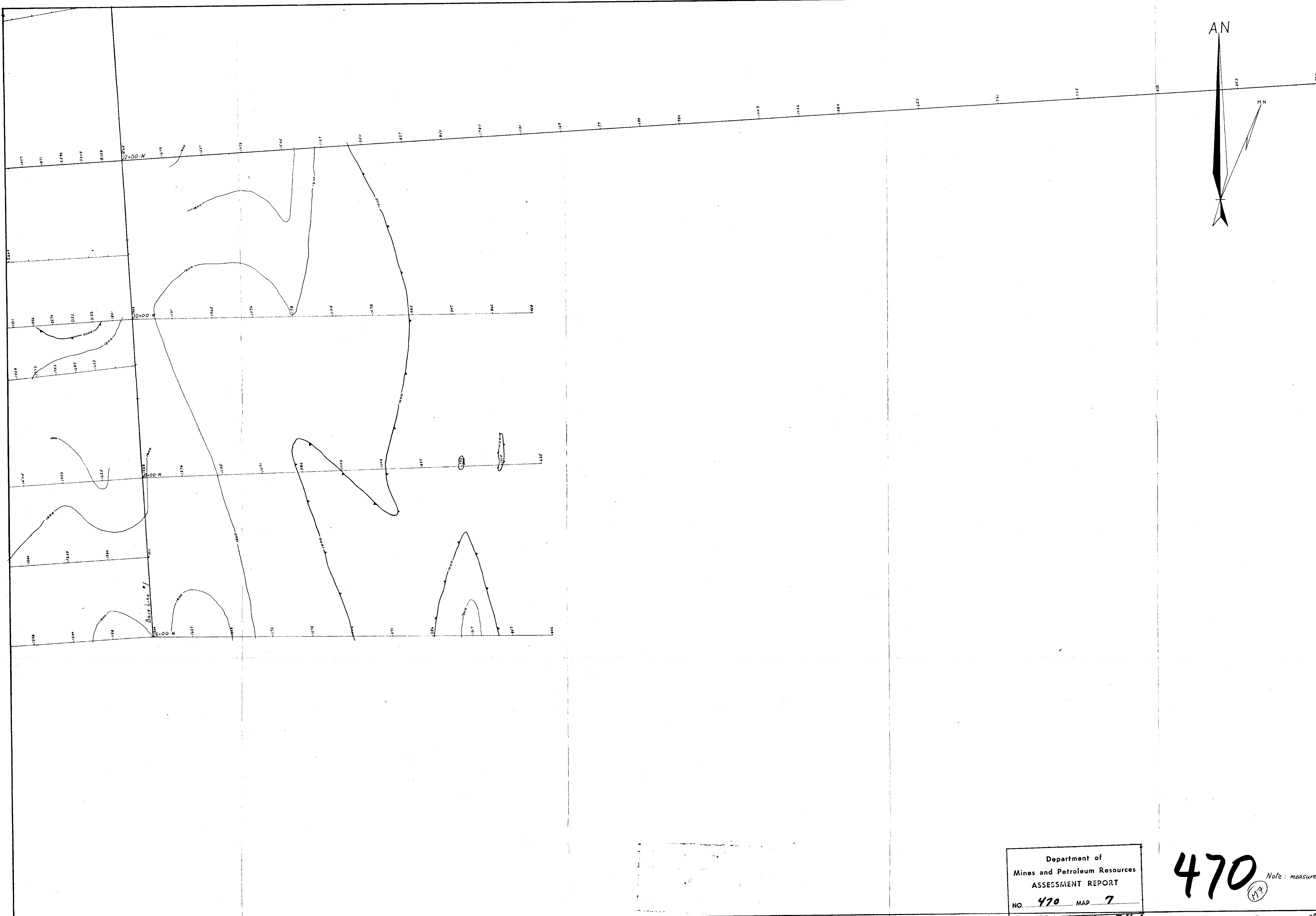
SPROAT MOUNTAIN PROSPECT, B.C. MAGNETIC INTENSITY VALUES - VERTICAL FIELD. Operator: C. Webb. Appr. R.H. Jarvis. DATE: January, 1963. SCALE: 1" = 500'. SHEET 13-11.



470

Note: measurement units - gammas.

R.H. Jones

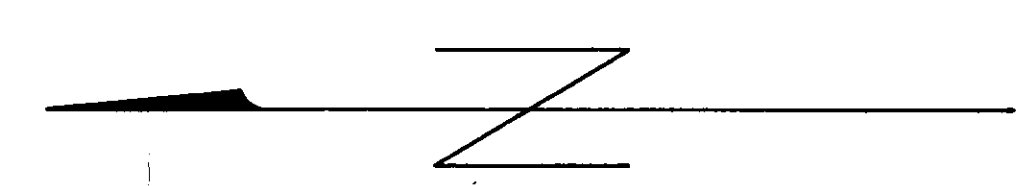
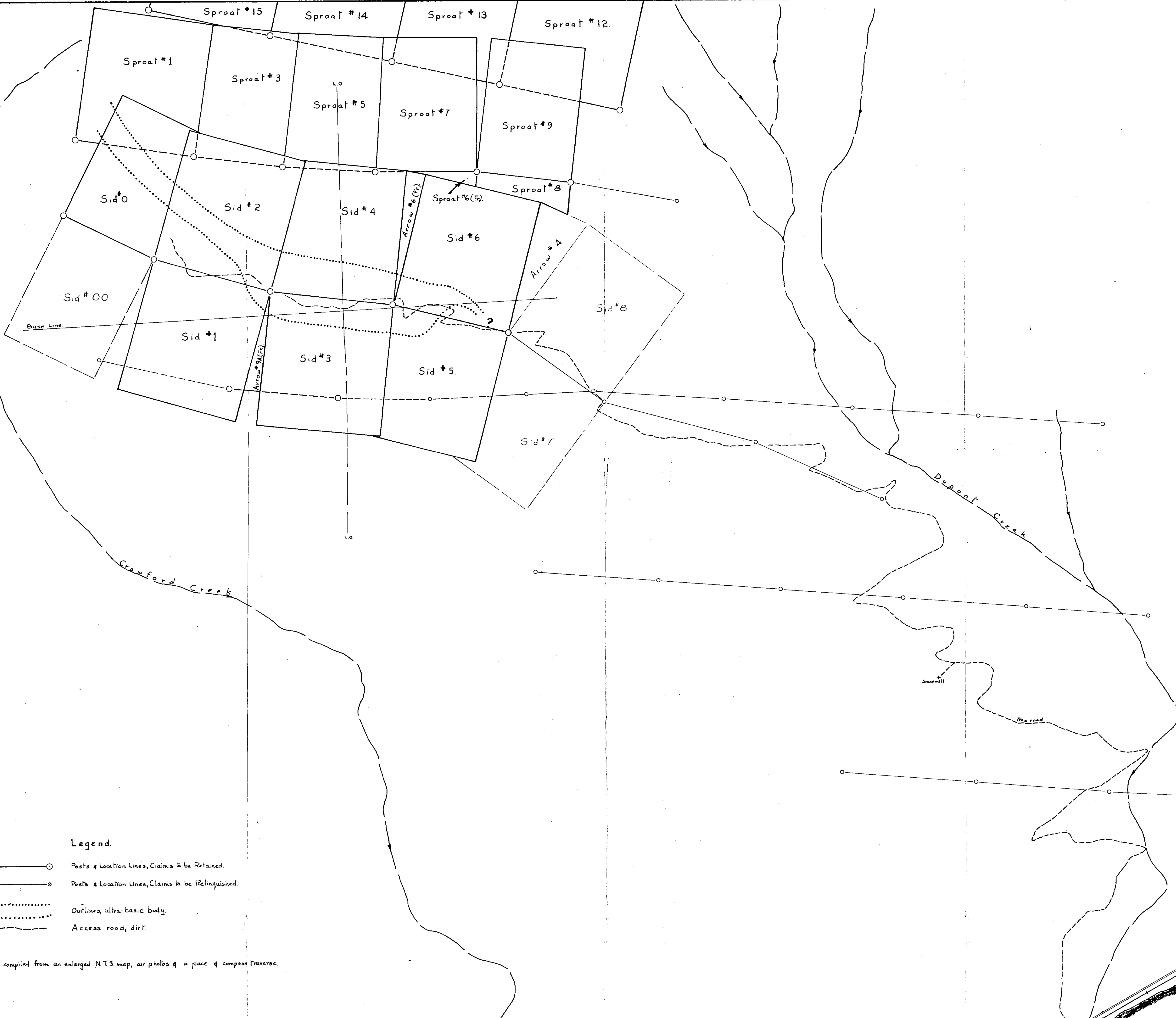


Department of
Mines and Petroleum Resources
ASSESSMENT REPORT
NO. 470 MAP 7

470

Note: measurement units - gammas.

R.H. James



Legend.

- Posts of Location Lines, Claims to be Retained.
- Posts of Location Lines, Claims to be Relinquished.
- Outlines, ultra-basic body.
- Access road, dirt.

Map compiled from an enlarged N.T.S. map, air photos of a pace of compass traverse.

Claim Distribution

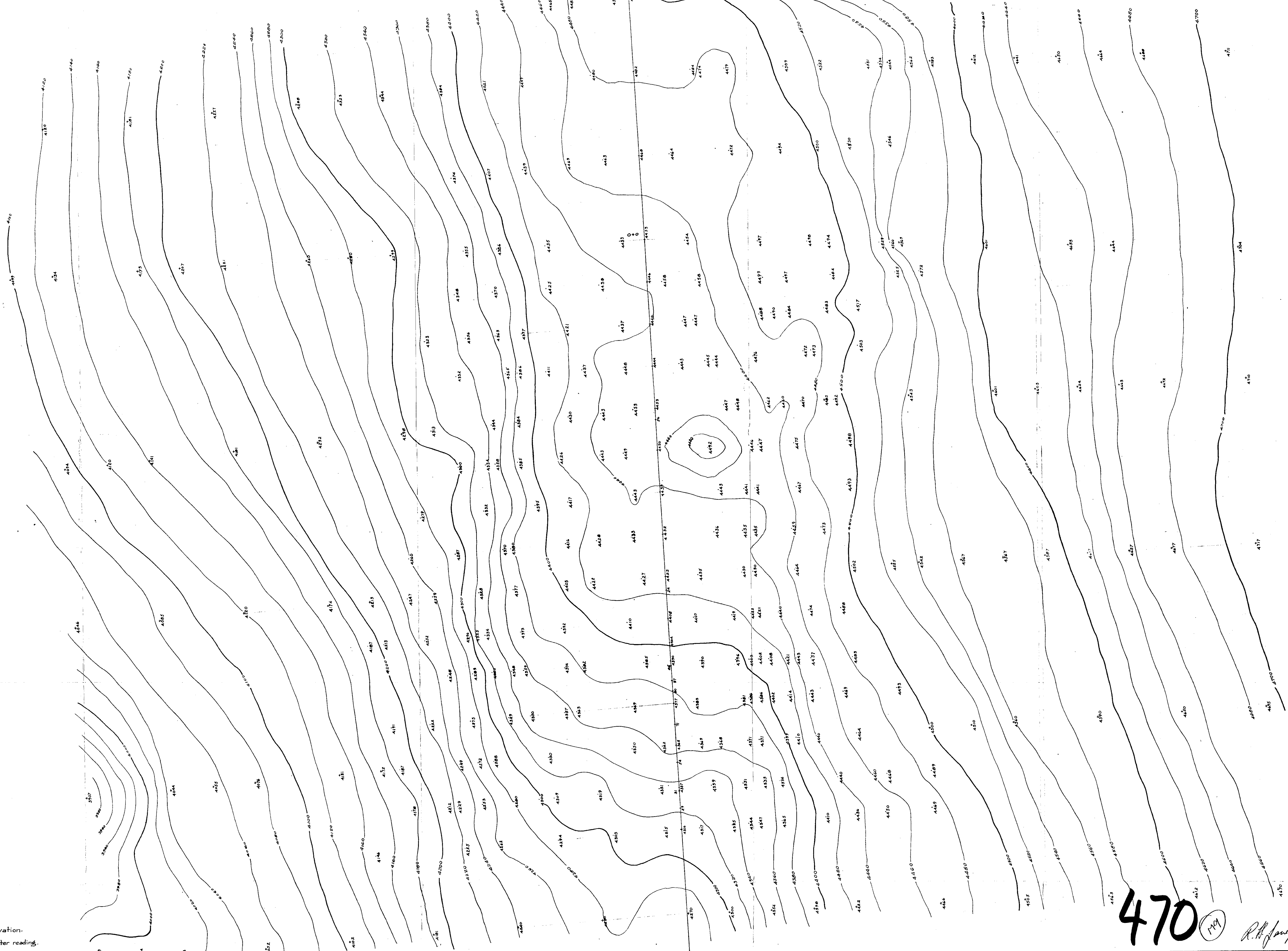
CANADIAN JONES-MANVILLE COMPANY LTD. EXPLORATION DIVISION VANCOUVER — BRITISH COLUMBIA — CANADA		
Sproat Min. Prospect, B.C.		
Claims to be Held Through		
Period: Spring '63 to Spring '64		
SCALE: 1" = 500'	DATE: Jan. '63.	DRAWN: R.H.T. APP: R.H.T.

470

Columbia River

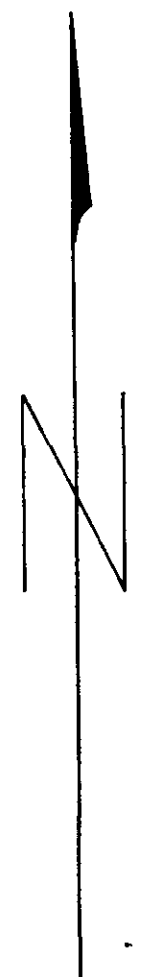
YB

Ferry To Arrowhead



NOTE:
• Dot represents stadia profile elevation.
+ Cross represents corrected Barometer reading.

470 (100) R.H. James



NOTE:
• Dot represents stadia profile elevation.
+ Cross represents corrected Barometer reading.

470 

