

500

CANEX AERIAL EXPLORATION LTD.

GEOLOGICAL AND GEOCHEMICAL REPORT
ON THE
BINGO NOS. 11 - 30 MINERAL CLAIMS
FOR
COPPER RIDGE MINES LTD.
FRANCOIS LAKE AREA, 93 K/3 SE.
OMINECA MINING DIVISION, BRITISH COLUMBIA

July 17 - July 23, 1963.

C.W. Ball
R.E. Cribbs
C.E. Dunn
H. Paulson

TABLE OF CONTENTS

SUMMARY	Page 1
AGREEMENT	" 1
EXPLORATION AND DEVELOPMENT	
Access	" 1
Control	" 2
Geology	" 2
Geochemical	" 2
Assays	" 2
GEOLOGICAL FINDINGS	" 2
ASSAY RETURNS	" 4
EVALUATION	" 4
RECOMMENDATION	" 4

APPENDIX I STATEMENT OF COSTS

LIST OF ILLUSTRATIONS

- Map No. 1 Claim Map Bingo Nos. 11-30 Mineral Claims
Scale 1" = 1000'
- Map No. 2 Geological Sketch Map Bingo Nos. 11-30 Mineral Claims
Scale 1" = 1000'
Dated July 22, 1963 by C.W. Ball, P. Eng.
- Map No. 3 Geochemical Map Bingo Nos. 11-30 Mineral Claims
Scale 1" = 1000'
Dated August, 1963 by R.E. Cribbs.

Department of Mines and Petroleum Resources ASSESSMENT REPORT NO. <u>500</u> MAP

SUMMARY

By agreement with Copper Ridge Mines Ltd., Canex Aerial Exploration Ltd. examined the Bingo 11-30 group of claims situated in the Endako area. A granite-andesite contact under glacial cover could be inferred, but the possibility of accompanying molybdenum mineralization could not be supported by direct observation and, in fact, was diminished by low soil assays. It is recommended that the option be dropped.

AGREEMENT

The agreement, dated "the 1st day of May, A.D. 1963", made Canex Aerial Exploration Ltd. a participant with Copper Ridge Mines Ltd. in an option arrangement. Canex Aerial committed itself to exploration and development of the mineral claims described in the agreement, Schedule A, as follows:

<u>Omineca M.D.</u>	<u>Record No.</u>	<u>Record Date</u>
Bingo 11-30	14226-16245	5th & 7th Sept., 1961

Depending on Canex Aerial findings, Copper Ridge Mines agreed to acquire the claims from Drumelzier Enterprises Ltd. for \$25,000 payable on or before September 1st, 1963.

EXPLORATION AND DEVELOPMENT COMPLETED

1. Access

A D8 cat dozed a road from the Endako mineralized area south approximately one and a half miles to the Fran 6 claim.

2. Control

A 19,000 foot east-west baseline was dozed from the Fran 6 claim to the Bingo 22 claim, passing through Bingo claims 29, 27, 25, 23 and 24. More than six miles of north-south grid lines were laid out 1000 feet apart.

3. Geology

Mr. C. Ball mapped the area surrounding the Bingo 11-30 and compiled a geological report and sketch map on a scale of 1" = 1000'.

4. Geochemical Sampling

326 soil samples were collected along the north-south lines at 100 foot intervals on the grid lines spaced 1000 feet apart.
(Also see Addendum Page 5.)

5. Assay

All samples were assayed for trace molybdenum content at the University of B.C. Results are colorimetric, being based on the development of the brownish red complex or pentavalent molybdenum with ammonium thiocyanate in acid solution.

As a check on results obtained, Mr. R.E. Cribbs ran a check assay on every tenth sample.

GEOLOGICAL FINDINGS

Because of the glacial cover, bedrock geology had to be interpolated from exposures outside the claim group.

Mr. Ball's map shows a biotite andesite body surrounded on three sides by granite. He postulates a major contact trending 335° and dividing the claim group into a south-western four-fifths underlain

predominantly by granite and a northeastern one-fifth underlain predominantly by andesite. The nature of the contact remains conjectural because on the one hand dykes demonstrate intrusive activity in the area and on the other, slickensides indicate some faulting. A fault contact is favored over an intrusive one because it lies on a three mile topographical lineament extending from the Bingo claims NNW to the Endako River valley, a lineament involving two lakes and a stream channel. (That the area carries a strong NNW fault pattern has already been noted on the more thoroughly investigated Endako property.) Granted that lineation does not eliminate the idea of intrusion, nevertheless the geometric straightness of the stream channel argues for a fault. The fault hypothesis was strengthened by Torwest's drilling near the lineament roughly a mile north of the Bingo group. Mr. Ball found the core travelling repeatedly in and out of granite and what appeared to be volcanics with zeolites; he further found slickensiding and also brecciation so pronounced that recovery was reduced to 40%. The drilling site lies not only on the NNW lineament but also on the extension of the Endako E-W mineralized trend, thus occupying the centre of an X. The fact that Torwest's core carries some molybdenite is probably due to its place on the Endako arm of the X and should not be interpreted as mineralization running along the NNW arm into the Bingo claims.

On current evidence, Endako is seen as mineralization along a fractured zone which is cut off against a major E-W fault before it can reach the Bingo claims. Mr. Ball's investigation uncovered nothing to refute this contention. Thus, on a structural basis, mineralization

is not to be expected in the Bingo claims.

ASSAY RETURNS

According to assays received so far, the molybdenum content of the soil samples is less than the lowest standard used: 4 ppm. The soil of the Bingo claims therefore falls within the same range as the soil over granites known to be barren.

EVALUATION

Proximity and lithology in common with Endako make molybdenite mineralization within the realm of possibility. However, lack of direct observation combined with a poor structural position and with the absence of a soil anomaly make drilling expenditures unjustifiable.

RECOMMENDATION

Since the claims must be considered unmineralized and since the ground is not required for mine installations, the option should be dropped.

*C. E. Deun
J. E. Cuth
C. W. Ball P. Eng.*

Vancouver, B.C.
14 August, 1963
/jhw

ADDENDUM

Geochemical Sampling Procedure:

Samples were taken below the grey leached zone at least six inches below the humus. Samples were omitted from sites where the humus was more than a foot or two thick. Several ounces of soil were taken from each sample pit.

Samples were neither screened nor crushed before being analyzed by the University of British Columbia. Check analyses by the Canex laboratory were made on the minus 60 fraction of soil splits.

APPENDIX I

DOMINION OF CANADA:)
 Province of British Columbia)
 To Wit:)

I, W. D. McDermott, of 700 Burrard Building, Vancouver, B.C., in the Province of British Columbia, do solemnly declare that the following expenditures have been incurred by Canex Aerial Exploration Ltd. in carrying out geological and geochemical work on the Bingo 11-30 Mineral Claims:

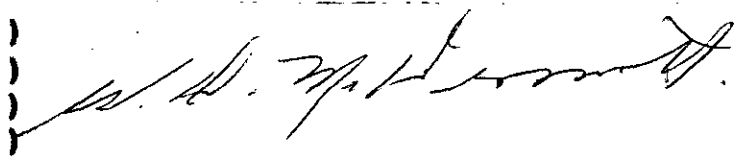
1. <u>Geological Mapping</u>			
C.W. Ball, Chief Geologist	6 days @ \$ 30		
E. Rychkun, Student Asst.	6 days @ \$ 20		
Total	6 days @ \$ 50		\$ 300.00
2. <u>Geochemical Surveying</u>			
R.E. Cribbs, Geochemist	6 days @ \$ 30		
D. Hawkins, Soil Sampler	6 days @ \$ 20		
J. Irwin, Soil Sampler	6 days @ \$ 20		
S. Tsogoeff, Soil Sampler	6 days @ \$ 20		
G. Scoretz, Soil Sampler	6 days @ \$ 20		
Total	6 days @ \$110		660.00
3. <u>Assaying</u>			
326 samples @ \$1.00			
30 check samples @ Endako			326.00
4. <u>Survey Control</u>			
V. Bradley, Surveyor	5 days @ \$ 20		
T. Lietz, Chainman	5 days @ \$ 15		
Total	5 days @ \$ 35		175.00
5. <u>Vehicle Operation</u>			
6 days @ \$10.80 per day			64.80
6. <u>Bulldozer Work - Survey Control</u>			
Clearing 19,000 foot baseline			
20 hours @ \$18/hour			<u>360.00</u>
			\$1,885.80
7. <u>Physical Work (Access Road)</u>			
1-1/2 miles of road from Endako			
camp to Bingo 11-30 Mineral Claims			
20 hours work applied @ \$18/hour			<u>360.00</u>
			<u>\$2,245.80</u>

And I make this solemn declaration conscientiously believing it to be true, and knowing that it is of the same force and effect as if made under oath and by virtue of the "Canada Evidence Act"

Declared before me at the City)
 of Vancouver, in the Province of British)
 Columbia, this 18th day of September,)
 1963, A.D.)



 A Commissioner for taking Affidavits
 within the Province of British Columbia



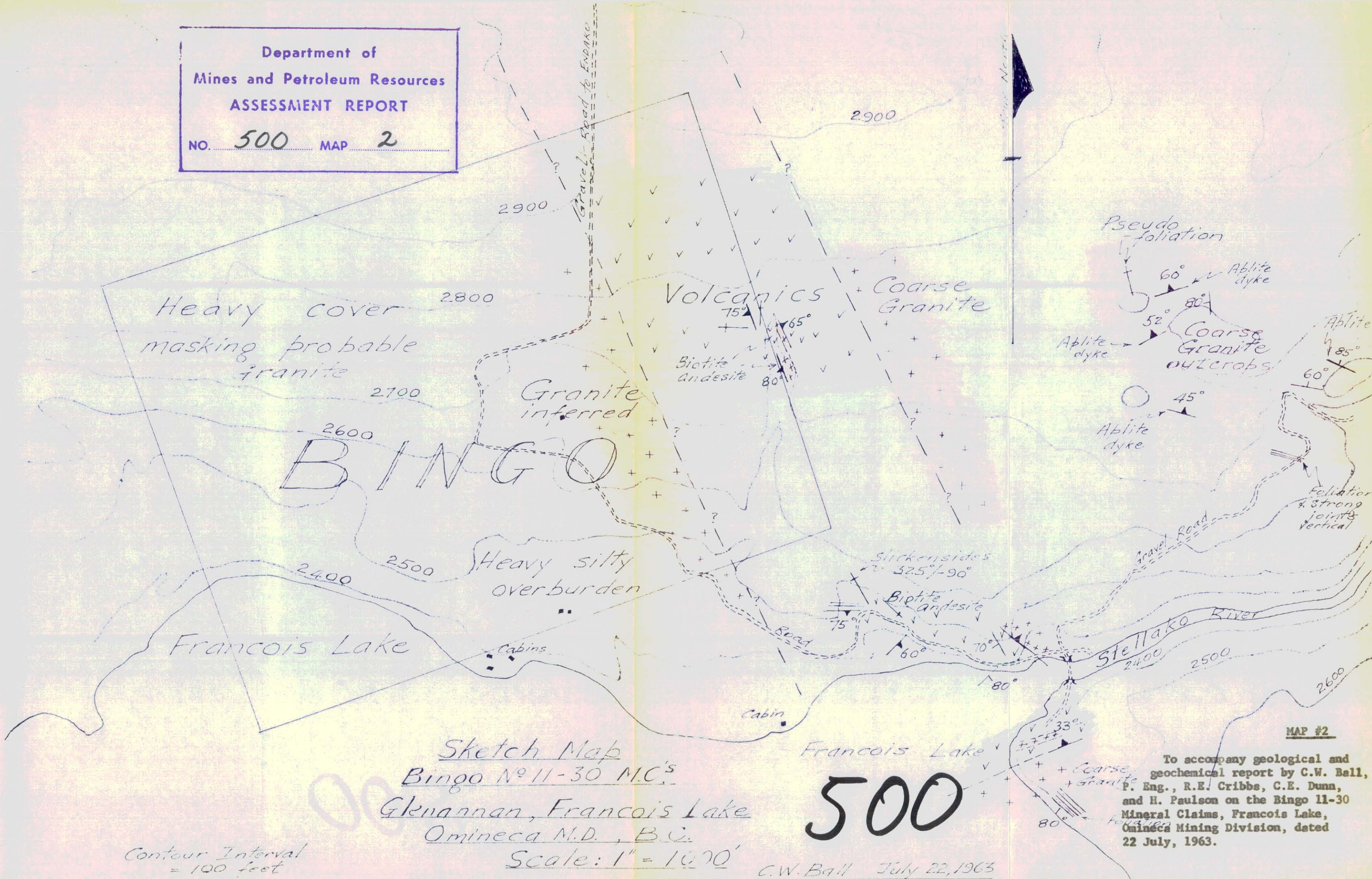
I, R. E. CRIBBS, AM EMPLOYED IN GEOCHEMICAL
PROSPECTING BY CANEX AERIAL EXPLORATION, LTD.

I AM A GRADUATE OF THE UNIVERSITY OF MINNESOTA
IN GEOLOGICAL ENGINEERING. I HAVE HAD 12 YEARS
EXPERIENCE IN GEOCHEMICAL PROSPECTING AND HAVE BEEN
CONSULTING IN GEOCHEMICAL PROSPECTING SINCE 1958.

Richard E. Cribbs

AUGUST 26, 1963

Department of
Mines and Petroleum Resources
ASSESSMENT REPORT
NO. 500 MAP 2



Sketch Map
Bingo No 11-30 M.C.'s
Glenannan, Francois Lake
Omineca M.D., B.C.
Scale: 1" = 1000'

Contour Interval
= 100 feet

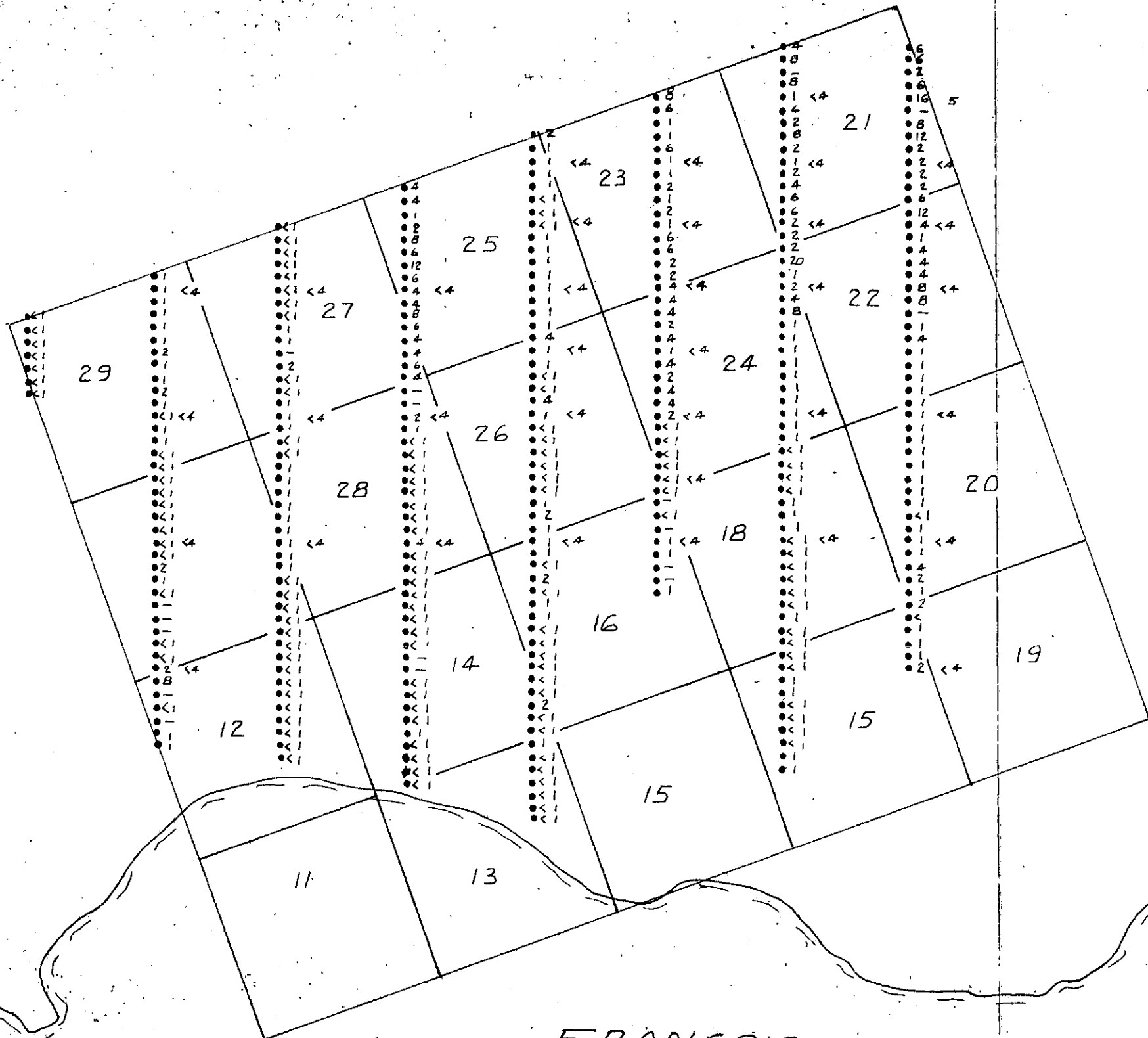
500

C.W. Ball July 22, 1963

MAP #2

To accompany geological and
geochemical report by C.W. Ball,
P. Eng., R.E. Cribbs, C.E. Dunn,
and H. Paulson on the Bingo 11-30
Mineral Claims, Francois Lake,
Omineca Mining Division, dated
22 July, 1963.

Department of
 Mines and Petroleum Resources
 ASSESSMENT REPORT
 NO. 500 MAP 3



500

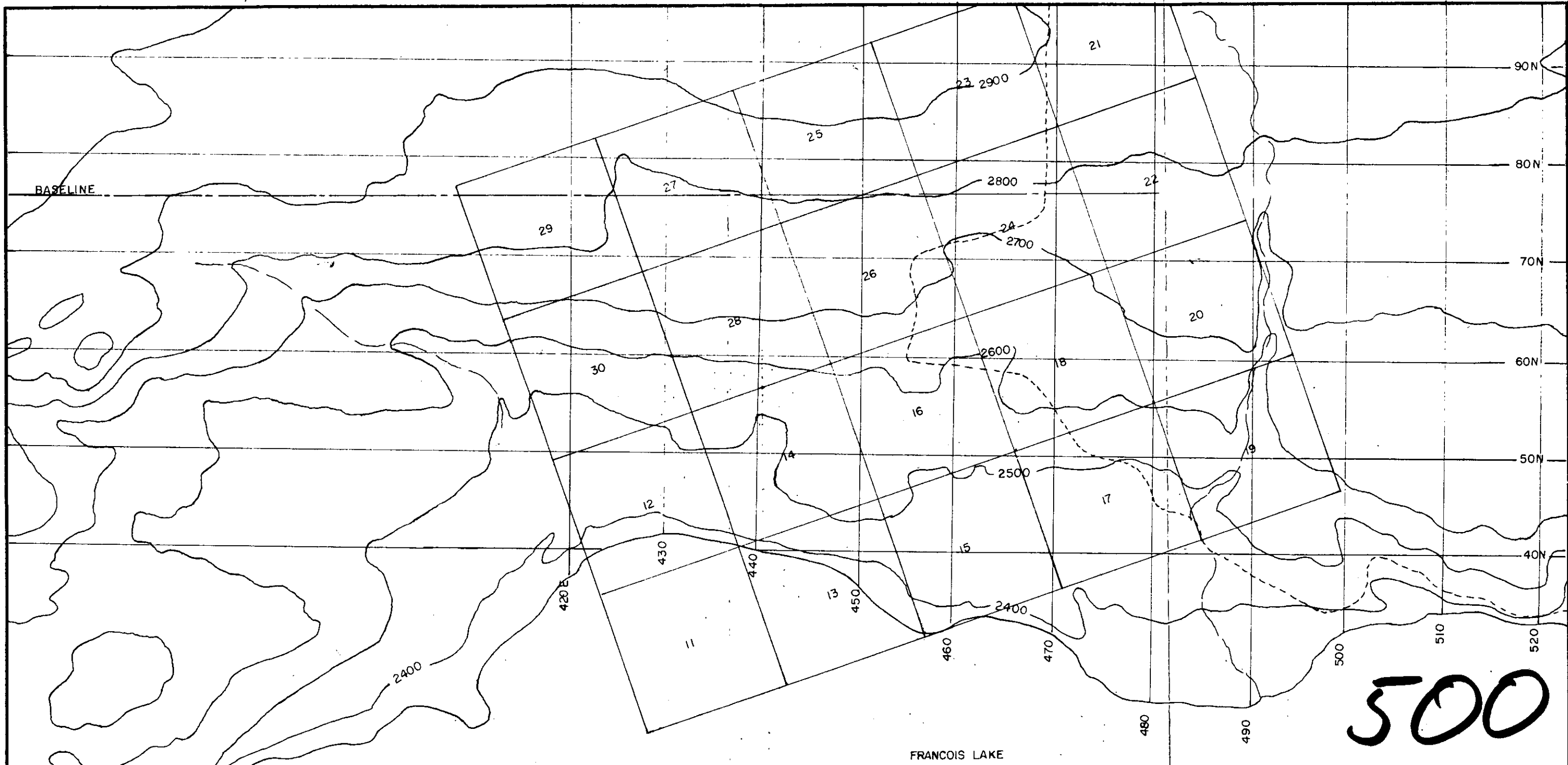
GEOCHEMICAL SURVEY
 • 2 PPM Mo UBC
 • <4 PPM Mo R.E.C.

FRANCOIS LAKE

MAP #3

TO ACCOMPANY GEOLOGICAL & GEOCHEMICAL REPORT BY C.W. BALL, P.ENG., R.E. CRIBBS, C.E. DUNN & H. PAULSON
 ON THE BINGO 11-30 MINERAL CLAIMS, FRANCOIS LAKE ONENICA MIN. DIV. DATED JULY 22 1963

DRAWN R.E. CRIBBS	SCALE 1"=1000	COPPER RIDGE MINES LTD.	CANEX AERIAL EXPLORATION LTD. OPTION
TRACED	DATE July 22/63	BINGO, NR 11-30 M.C.S.	
APPROVED <i>[Signature]</i>		ONENICA MINING DIVISION, B.C.	FILE NO.



**Department of
Mines and Petroleum Resources
ASSESSMENT REPORT**

NO. 500 MAP 1

**To accompany geological and geochemical report by C.W. Bell, P. Eng., R.E. Cribbs, C.E. Dunn and H. Paulson
on the Bingo 11-30 Mineral Claims, Francois Lake, Quebec Mining Division, dated 22 July, 1963.**

MAP #1

DRAWN C.E. DUNN	SCALE 1" = 1000'	COPPER RIDGE MINES LTD.	CANEX AERIAL EXPLORATION LTD. — OPTION
TRACED	DATE JULY 22, 1963	BINGO NOS 11-30 MINERAL CLAIMS	FILE NO.
APPROVED <i>C.E. Dunn</i>		QUEBEC MINING DIVISION B.C.	