

539

1

January 8, 1963.

Great West Mining Corporation Ltd.,
510 West Hastings Street,
Vancouver 2, B.C.

Dear Sirs:

Attached herewith is my Preliminary Report on the
Robina Claims in the Revelstoke Mining Division, which are located
34 miles north of Revelstoke, B.C.

Information for this Report was gathered from the work
performed by Mr. H. Derragh under my direction.

Respectfully submitted,

Franklin L. C. Price, P. Eng.

flcp/e

MAPS ENCLOSED

1	Robina Property	1" - 1000 Feet
2	Galena - Topog.	1" - 50 Feet
3	Galena - Mag.	1" - 50 Feet
4	Galena - "S. P."	1" - 50 Feet
5	Cabin Creek - Topog.	1" - 50 Feet
6	Cabin Creek - "S. P."	1" - 50 Feet

Department of
Mines and Petroleum Resources
ASSESSMENT REPORT
 NO. 539 MAP.....

INTRODUCTION

The Great West Mining Corp. of Vancouver, B. C. obtained an option on the Robina Group of mineral claims early in December and immediately a reconnaissance type geophysical survey was started on the claim group.

A crew of two men was moved to the property and they worked for two weeks on the main showings and the immediate area, working along a Brunton control base line. The work, although in its preliminary stage, indicated interesting anomalous areas that should be further checked for geology; but the second stage in exploration is certainly warranted on this group.

DESCRIPTION

The Robina Group of mineral claims is made up of 12 claims, all held by location. It is located in the Revelstoke Mining Division, 34 miles north (along Big Bend Highway) from Revelstoke, B. C. The claims are:

<u>Claim</u>	<u>Expiration Date</u>
Robina 1	Sept. 13, 1963
Robina 2	Sept. 13, 1963
Robina 3	Sept. 13, 1963
Robina 4	Sept. 13, 1963

DESCRIPTION (Cont'd.)

<u>Claim</u>	<u>Expiration Date</u>
Robina 5	Oct. 24, 1963
Robina 6	Oct. 24, 1963
Robina 7	Oct. 24, 1963
Robina 8	Oct. 24, 1963
Robina 9	Oct. 24, 1963
Robina 10	Oct. 24, 1963
Robina 11	Nov. 26, 1963
Robina 12	Nov. 26, 1963

The claims are well located for transportation as the Big Bend Highway passes through the centre of the claim group as shown on the attached location map.

This property had been sampled by Mr. H. Derraugh during the last week in October, 1962, when chip samples and character samples were taken for a distance of 72 feet along the strike. The samples taken indicate that interesting concentrations of molybdenum occur along this shear, with one character sample with 12 ounces of silver. The shear was carefully sampled along the portion where trenching had exposed the mineralization and it averaged 1.53% in molybdenite. The shear, or a parallel shear,

DESCRIPTION (Cont'd)

is again exposed in a creek bed some 3,000 feet south and similar mineralization is again exposed.

Careful examination along this zone showed that pyrite is associated with the molybdenite and it was for that reason that a spontaneous polarization geophysical survey was completed along the shear zones and between the two exposed mineralized zones to indicate the size and extent of the molybdenite.

ASSAYS

Chip samples have been taken by Mr. H. Derraugh to determine the amount of the molybdenite along the shear. These samples have been assayed by J. R. Williams in Vancouver as follows:

<u>Sample Number</u>	<u>Width Inches</u>	<u>Silver Ozs.</u>	<u>Molybdenum (MoS₂) %</u>
24213	18	0.20	
24214	20	0.50	
24215	20	0.40	0.78
24216	14	0.25	0.70
24217	Character	0.20	2.35
24218	Character	0.60	2.96
24219	Character	0.90	0.87
24220	30	6.20	0.61
24221	Character	12.00	Trace

GEOPHYSICAL SURVEY (Cont'd)

any pyrrhotite or magnetite in the claim area or along the shear zones. None was indicated.

The S. P. survey did indicate a very interesting area just east of the base line on Robina Number Four claim. The centre of the anomaly is line 450 south, and at station 450 east. The anomalous area is over 350 feet by 300 feet, with a 300 millivolt line extended to twice the area. This area has readings up to 733 millivolts where the normal background was indicated at 250 millivolts.

GEOPHYSICAL SURVEY

A limited survey was carried out over the two outcrops by Mr. Niel Blackburn, under the direction of Mr. Harold Derragh. The method used was to establish a base line of N 10° E. and then run cross lines every 50 feet from the established base at ninety degrees. The survey work was all done with Brunton accuracy with only the minimum amount of line clearing. The base line was established as just off north, as it nearly connected the two outcrops.

After the lines were established two surveys were carried out at the same time from the same stations. A spontaneous polarization and also a magnetometer reading was taken at each station over the selected area. The results were most interesting.

The mineralized shear that the geophysical work was to trace was seen on the surface to contain molybdenite and pyrite. The two types of machines were used to check one another in an attempt to trace and locate any similar mineralization in the area. The S. P. machine will outline sulphides, giving better readings over pyrite than moly; however, as these seem to occur together on this showing one would lead us to the other. The magnetometer was used to check to see if there was

CONCLUSIONS

The results of the geophysical survey would warrant further exploration on the claims. This exploration could be one diamond drill test hole near the centre of the anomaly to determine the cause of such high readings. The number one hole could be collared just north of station 350 east, on the 450 south line. I would suggest a minus 45° hole with a bearing of S 82° E. The hole would have a total depth of 100 to 150 feet and in that length would pass through or across the main portion of the anomalous ground.

FRANKLIN L. C. PRICE

Professional Mining Engineer

318 THE BURRARD BUILDING
VANCOUVER 5, B.C.
TEL: 684-2933

January 13, 1964.

Mr. W. T. McGruder,
Gold Commissioner,
Revelstoke, B. C.

Mining Registrar's Office

RECEIVED

JAN 14 1964

Re: ROBINA CLAIMS.

REVELSTOKE, B. C.

Dear Sir:

Last week the Gold Commissioner here in Vancouver telephoned my office and asked that I advise you two things concerning the geophysical work that was done on the above-mentioned claims last year. This work was under my supervision and the field work was under the technical direction of a Mr. Charles Blackburn. Mr. Charles Blackburn is a third year geological student at the University of British Columbia and, at the time he was employed with our group, he had two summer seasons with the Geological Survey of Canada. In the summer of '61, he was employed in the Crow's Nest Pass area, and in the summer of '62 he was working in the Flat River area of the Northwest Territories.

Mr. Blackburn had studied geophysical work at the University and had worked under my direction doing the identical type of survey on Northern Vancouver Island. I consider that he was well qualified in his work.

The Gold Commissioner also asked that I advise you the type of machine that was used in this work. It was a S. P. machine with a direct current potentiometer with two non-polarizing electrodes. I believe the unit was made by Geophysical Engineering Limited of Toronto. However, the machine is now on a property in Australia and it is not possible to get the serial number. The method used was the leap frog method with the use of two copper sulphate pots.

It is interesting to note at this late date that the anomaly indicated by the S. P. survey has now been drilled and, although not commercial, did have interesting amounts of iron pyrites.

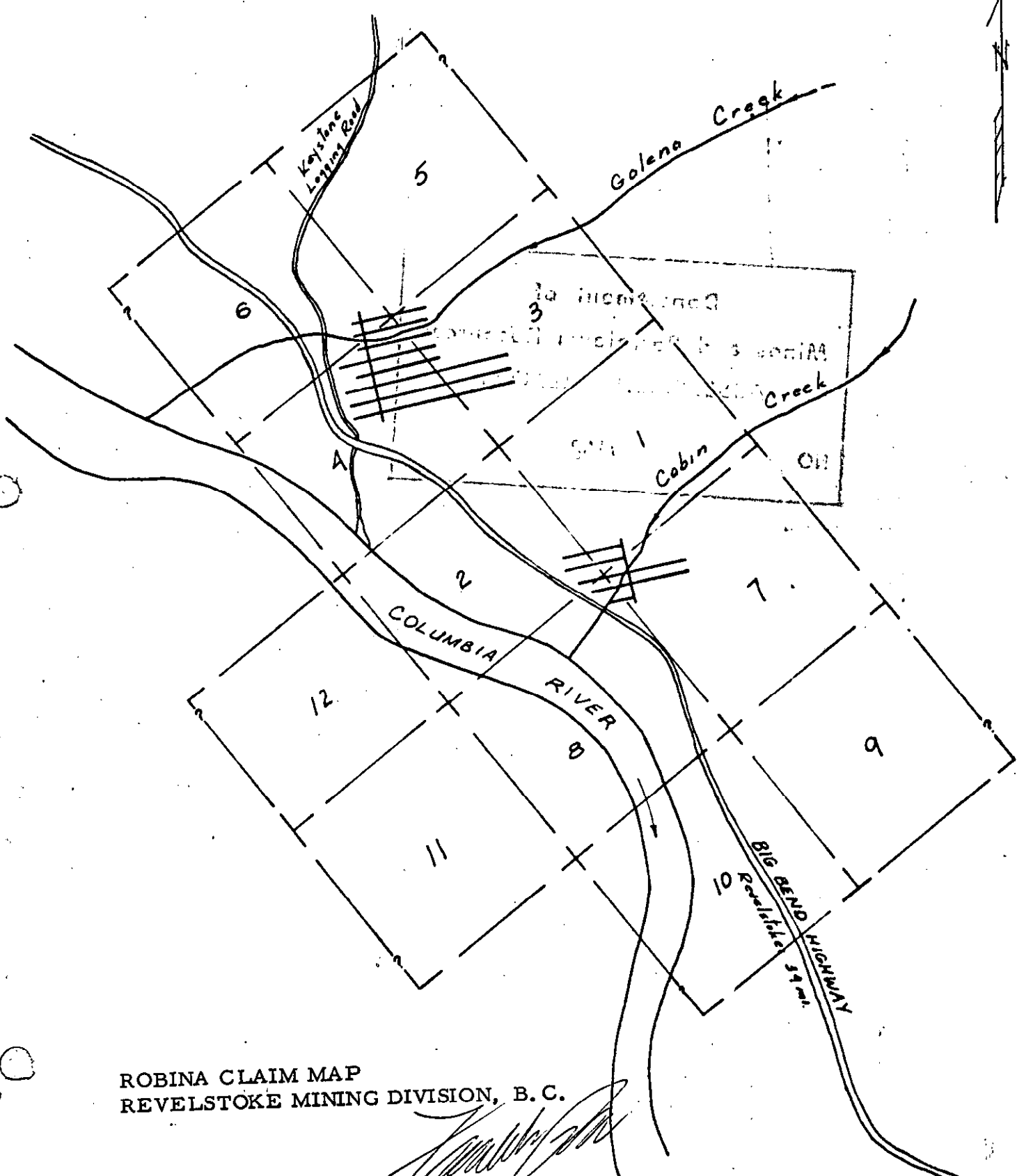
If there is any further information you desire in this respect, please feel free to write this office.

Yours very truly,

Franklin Price

Franklin L. C. Price, P. Eng.

flcp/e



ROBINA CLAIM MAP
 REVELSTOKE MINING DIVISION, B. C.

[Handwritten Signature]

PHONE: MUTUAL 5-5821
File #213065/069

CERTIFICATE OF ASSAY

J. R. WILLIAMS & SON LTD.

PROVINCIAL ASSAYERS AND CHEMISTS

Office and Laboratory:

580 Nelson Street, Vancouver 2, B. C.

I **Hereby Certify** that the following are the results of assays made by me upon samples of ORE
herein described and received from Messrs. Great West Mining Co. Ltd. December 12th 1962

MARKED	GOLD		SILVER		Per Cent.	Value Per Ton	Per Cent.	Value Per Ton
	Ounces Per Ton	Value Per Ton	Ounces Per Ton	Value Per Ton				
1	0.14		8.85					
2	0.20		35.00					
3	1.08		69.95					
4	0.63		33.50					
5	0.02		4.05					

Gold calculated at \$ _____ per ounce.

Silver calculated at _____ cents per ounce.

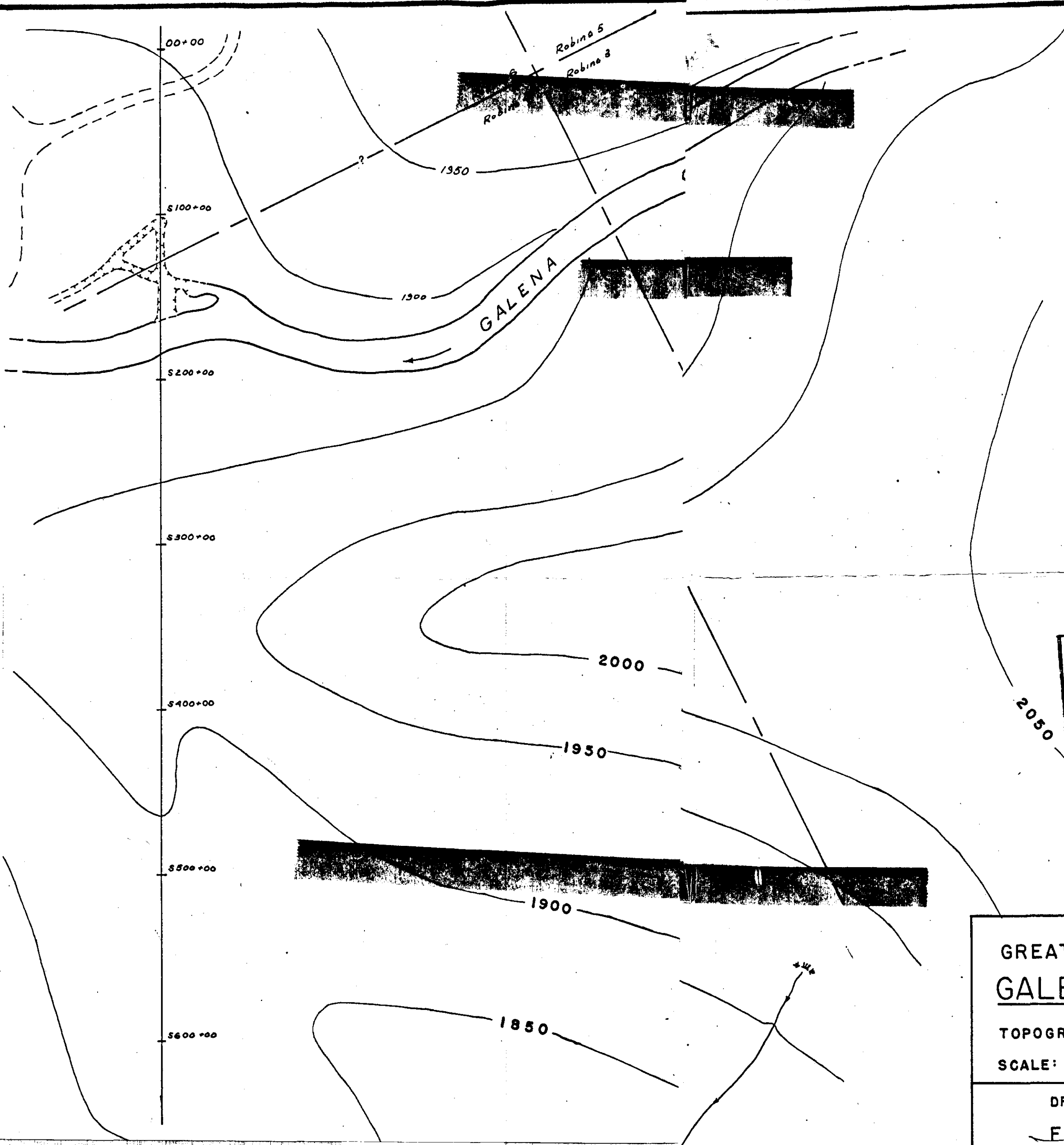
Calculated at _____ cents per lb.

Calculated at _____ cents per lb.

Calculated at _____ cents per lb.

NOTE—Pulps of Samples retained 2 months from date of Receipt.
Rejects 1 week unless otherwise instructed.

A. Moore Provincial Assayer.



Department of
Mines and Petroleum Resources
ASSESSMENT REPORT
NO. 539 MAP 2

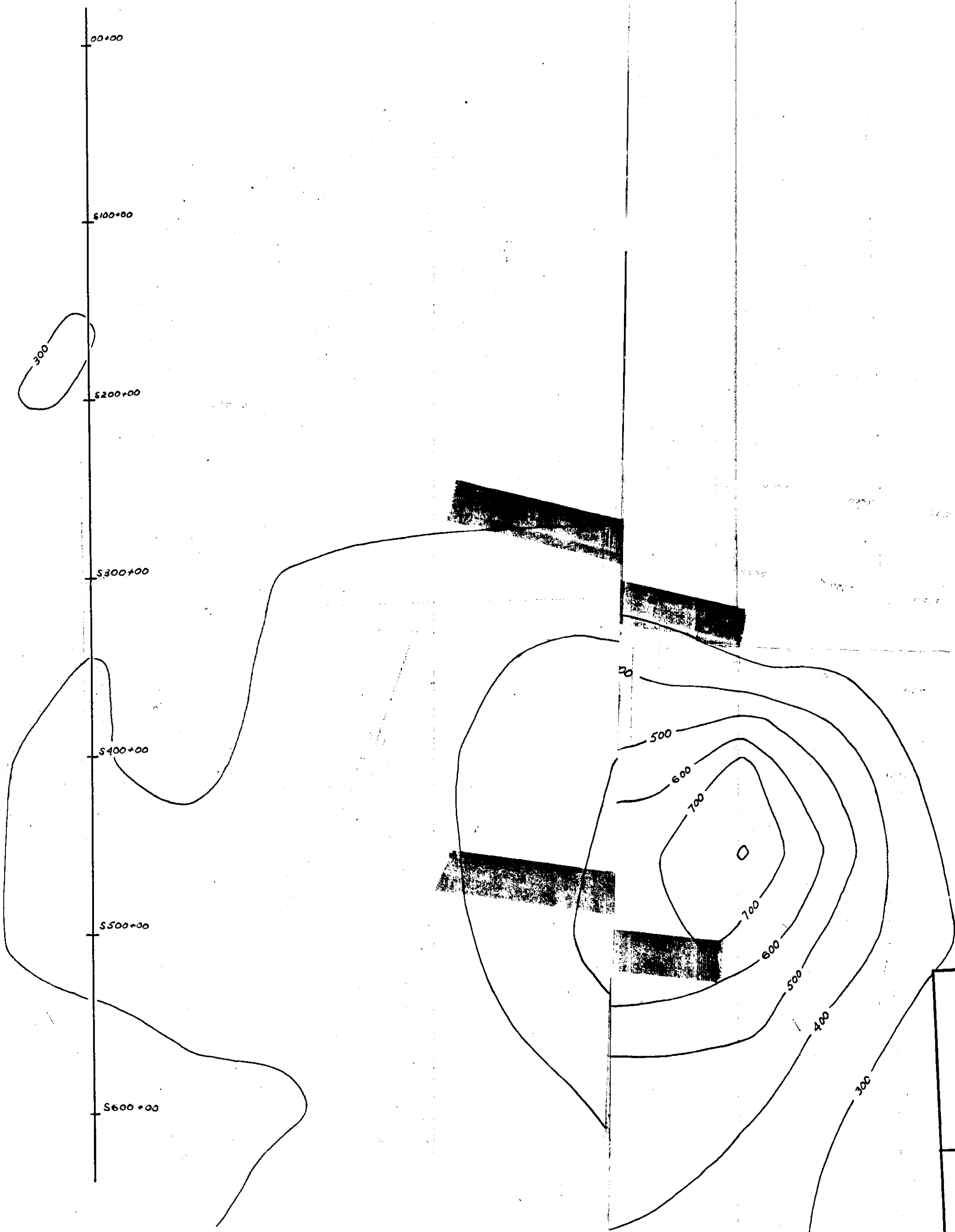
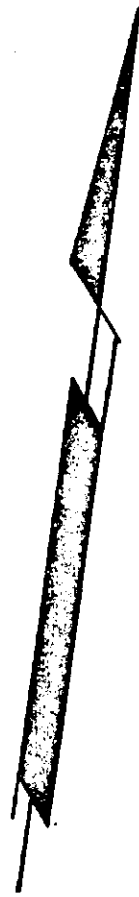
(M)

GREAT WEST MINING CORP.
GALENA CREEK AREA

TOPOGRAPHICAL MAP. DEC. 1962
SCALE: 1" = 50' CONTOUR INTERVAL 50'

DRAWN BY: M. BLACKBURN
FRANKLIN PRICE, P. ENG.

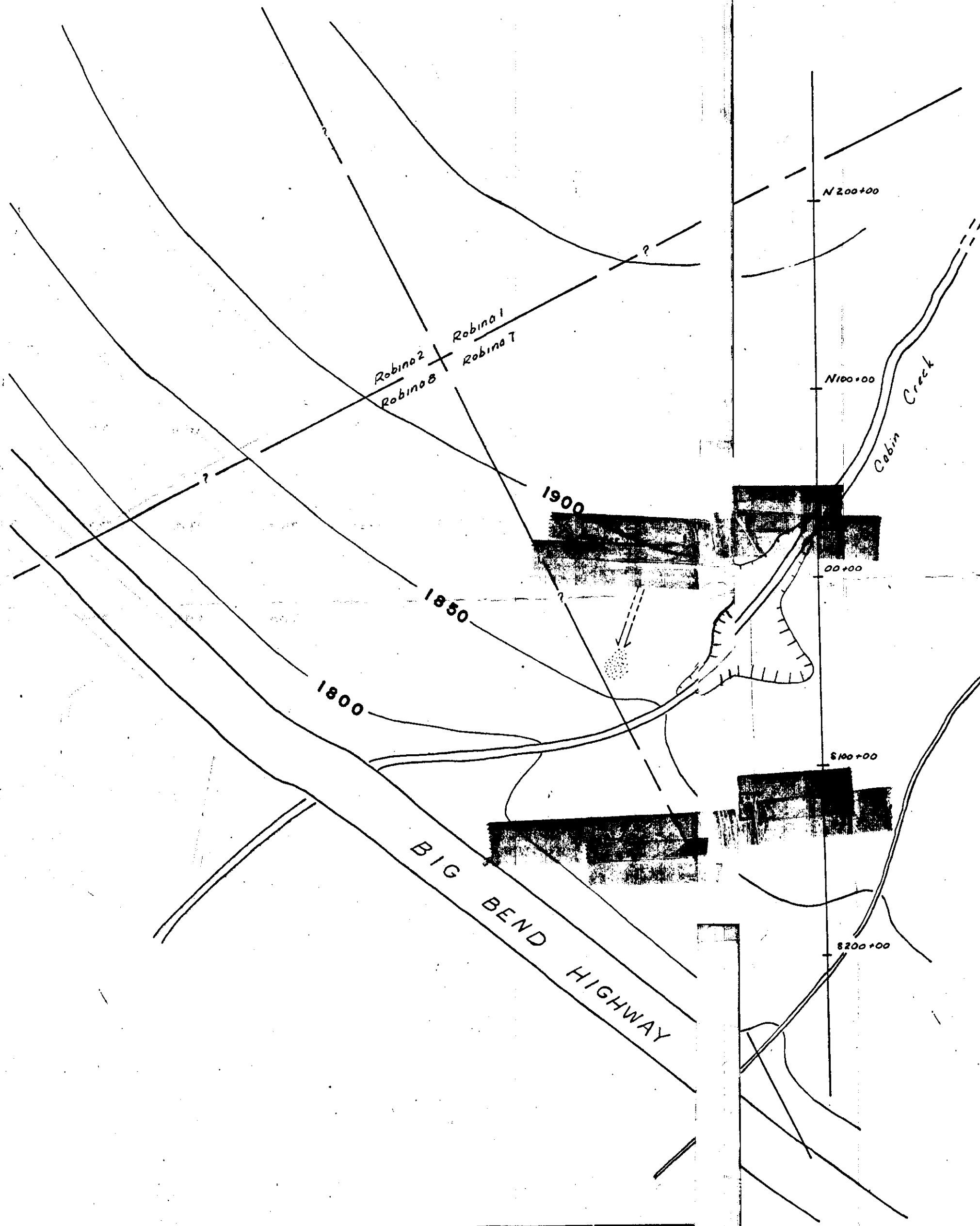
MS



Department of
 Mines and Petroleum Resources
 ASSESSMENT REPORT
 NO. 539 MAP 4

GREAT WEST MINING CORP.
 GALENA CREEK AREA
 S. P. SURVEY DEC. 1962
 SCALE: 1" = 50' CONTOUR INTERVAL 100 m.
 DRAWN BY: M. BLACKBURN
 FRANKLIN PRICE, P. ENG.

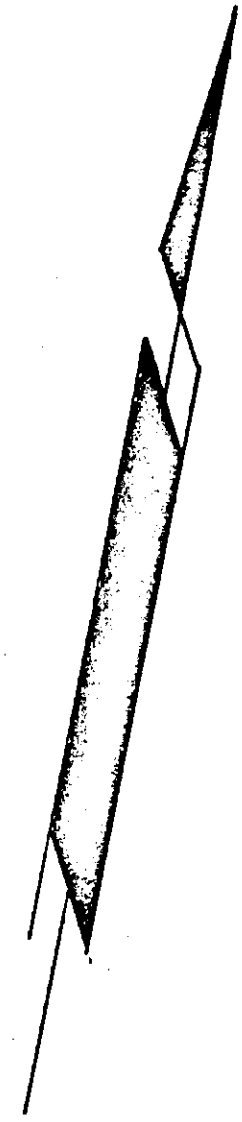
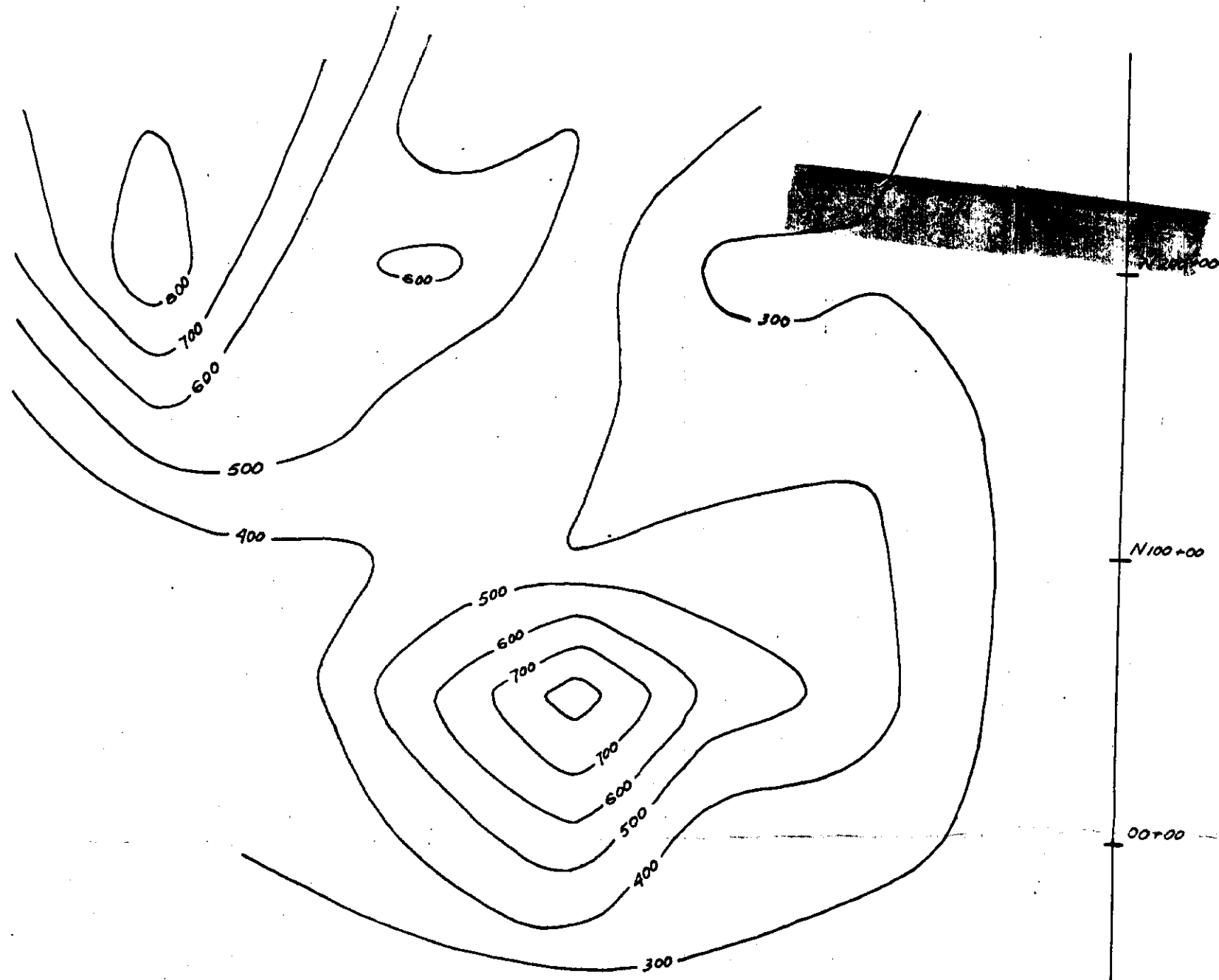
114



Department of
 Mines and Petroleum Resources
 ASSESSMENT REPORT
 NO. 539 MAP 5

GREAT WEST MINING CO
 CABIN CREEK ARE
 TOPOGRAPHICAL MAP. DEC. 19
 SCALE: 1" = 50'; 50' CONTOUR INTER
 DRAWN BY: M. BLACKBURN
 FRANKLIN PRICE, P. ENG.

MS



Department of
Mines and Petroleum Resources
ASSESSMENT REPORT
NO. 539 MAP 6

GREAT WEST MINING COI
CABIN CREEK ARE

S.P. SURVEY DEC. 19
SCALE: 1" = 50'; CONTOUR INTERVAL

DRAWN BY: M. BLACKBURN
FRANKLIN PRICE, P. ENG.