

TABLE OF CONTENTS

PART II

546  
2 of 2

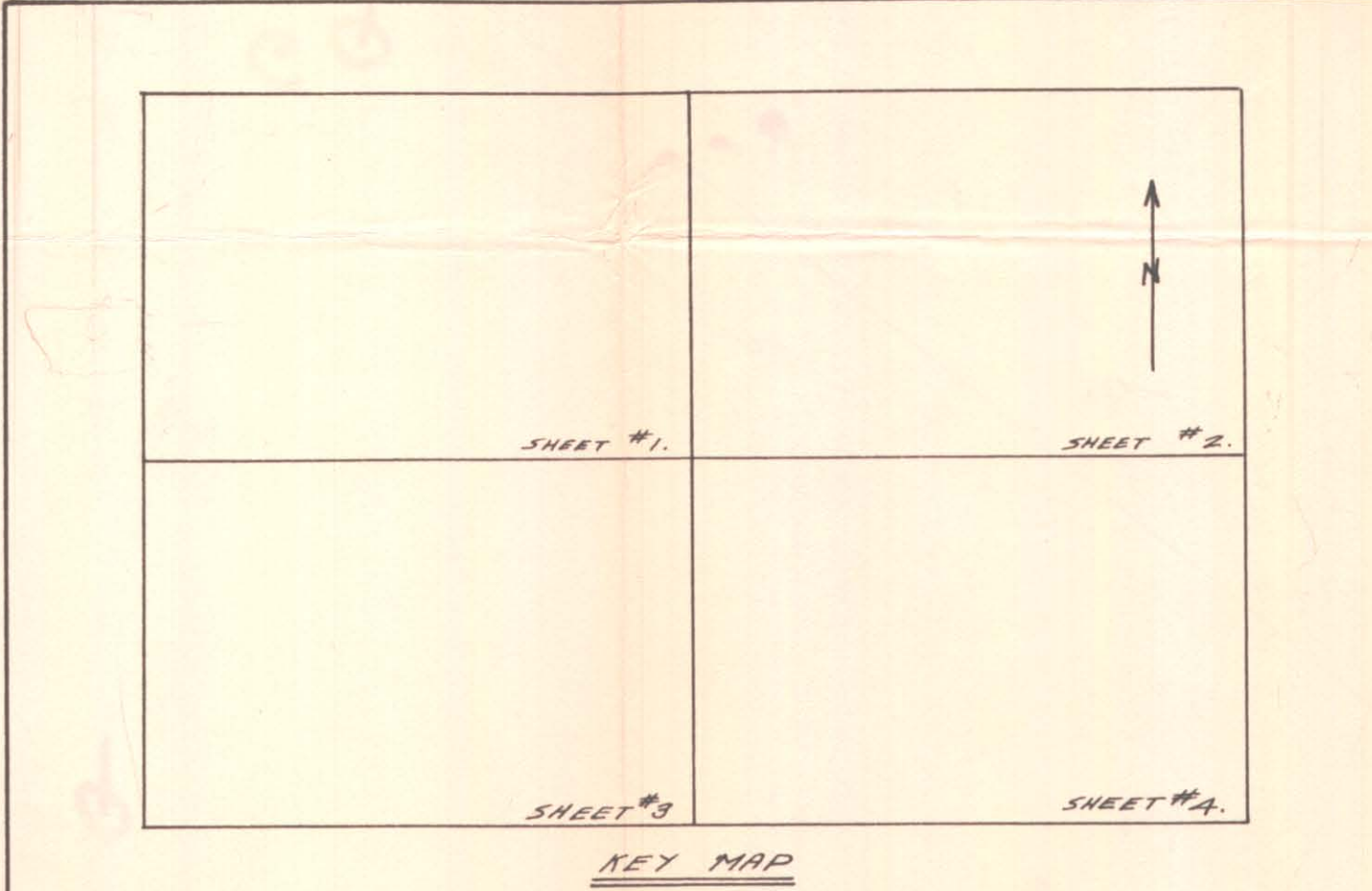
1	No. 1 Sheet	-	Surface Geology	1" = 20'
2	No. 2 Sheet	-	Surface Geology	1" = 20'
3	No. 3 Sheet	-	Surface Geology	1" = 20'
4	No. 4 Sheet	-	Surface Geology	1" = 20'
5	No. 5 Sheet	-	Surface Assay Plan	1" = 20'
6	No. 6 Sheet	-	Surface Assay Plan	1" = 30'
7	No. 7 Sheet	-	Level 7320 Assay Plan	1" = 30'
8	No. U-1 Sheet	-	Level 7320 Assay Plan	1" = 20'
9	Cross Section	-	Geology on No.1 Sheet	1" = 20'
10	Long. Section	-	Fold Plunge Theory	1" = 20'

\* \* \* \* \*

Department of  
Mines and Petroleum Resources  
ASSESSMENT REPORT  
NO. 546 MAP

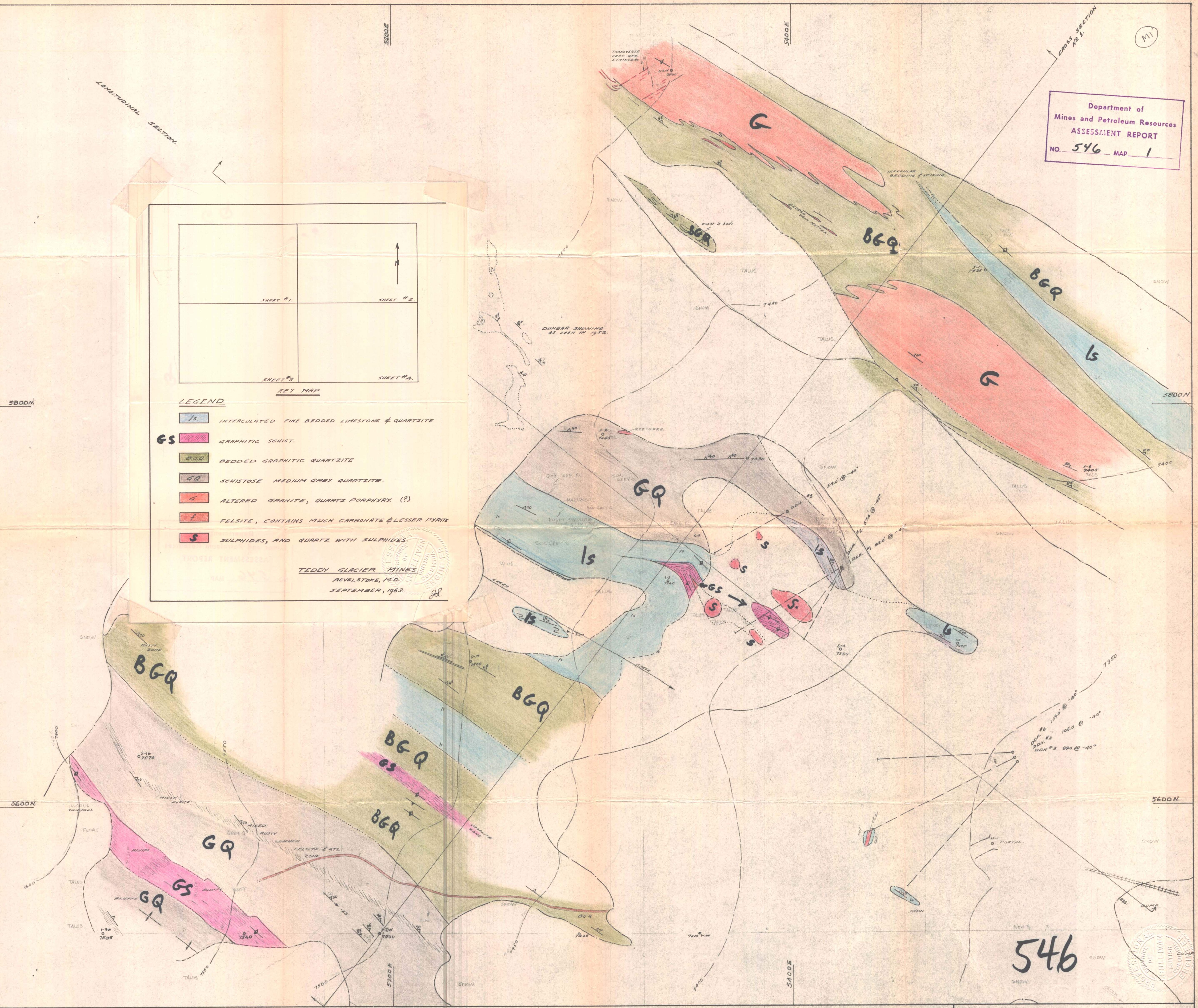


M1



- LEGEND**
- ls** INTERCALATED FINE BEDDED LIMESTONE & QUARTZITE
  - GS** GRAPHITIC SCHIST.
  - BGQ** BEDDED GRAPHITIC QUARTZITE
  - GQ** SCHISTOSE MEDIUM GREY QUARTZITE.
  - G** ALTERED GRANITE, QUARTZ PORPHYRY (?)
  - F** FELSITE, CONTAINS MUCH CARBONATE & LESSER PYRITE
  - S** SULPHIDES, AND QUARTZ WITH SULPHIDES.

**TEDDY GLACIER MINES**  
REVELSTOKE, B.C.  
SEPTEMBER, 1963.



TEDDY GLACIER MINES		
VANCOUVER, B.C.		
PROPERTY: BELL OP.	LOCATION: REVELSTOKE, B.C.	SUBJECT: SURFACE GEOLOGY
SCALE: 1" = 20'	DATE: SEPTEMBER, 1963.	SHEET NO. 1



M2

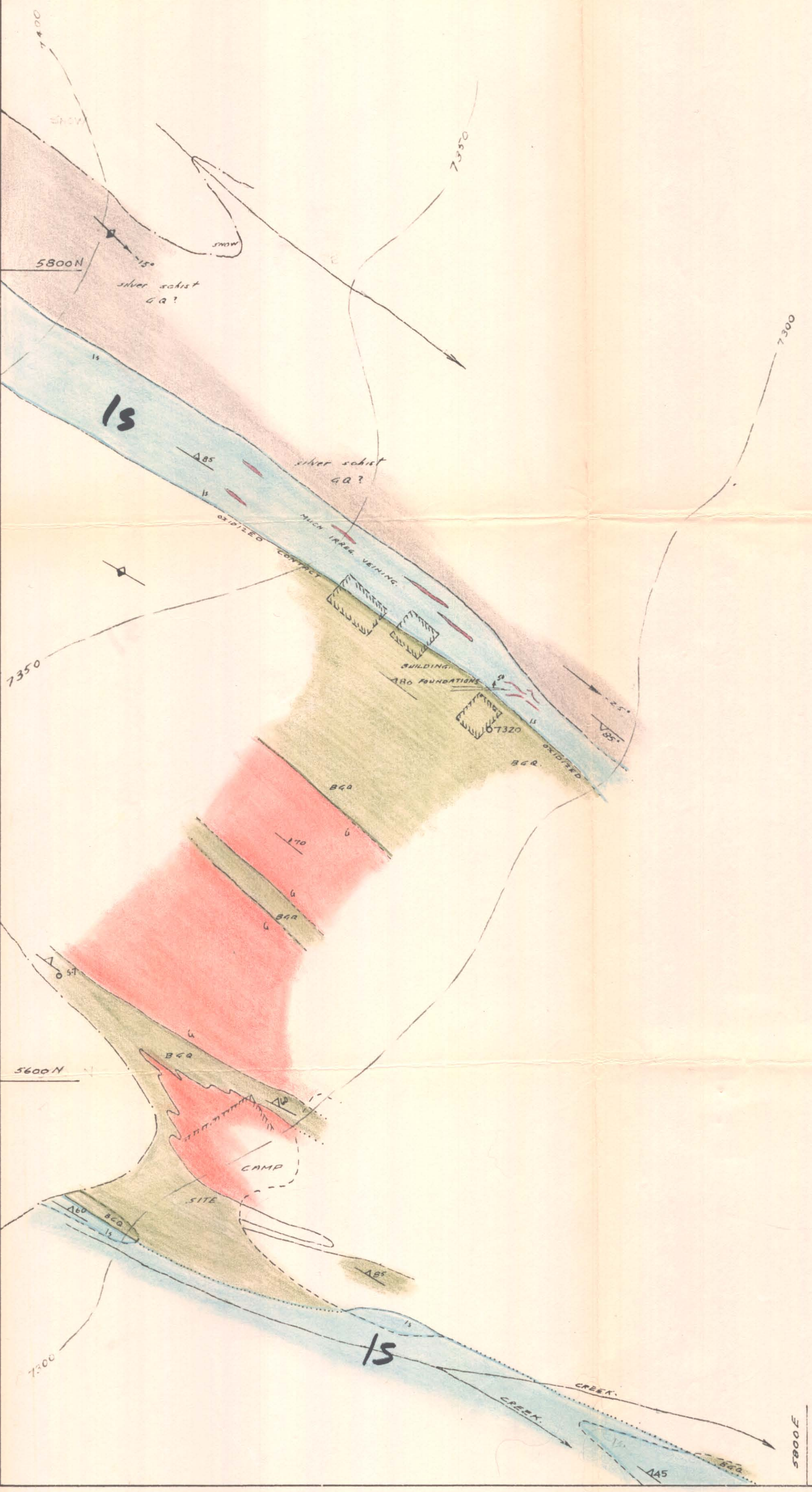
5800 E

6000 E

7395  
0 2-14

7300

LOWER ADIT.  
(APPROXIMATE LOCATION)



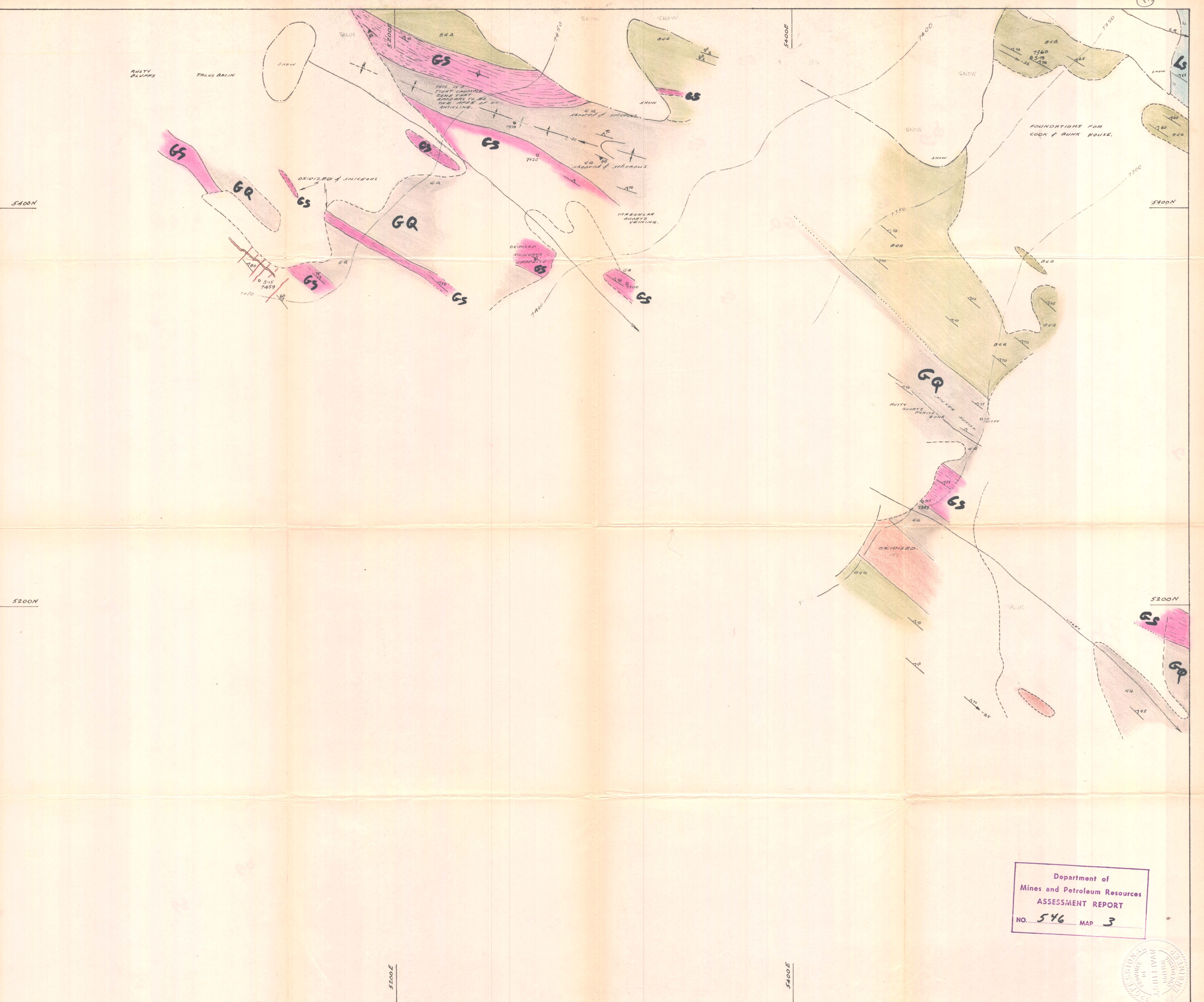
Department of  
Mines and Petroleum Resources  
ASSESSMENT REPORT  
NO. 546 MAP 2

546



TEDDY GLACIER MINES VANCOUVER, B.C.		
PROPERTY: BELL CP.	LOCATION: REVELSTOCK M.D.	SUBJECT: SURFACE GEOL.
SCALE: 1" = 20'	DATE: SEPTEMBER, 1963	SHEET: No 2





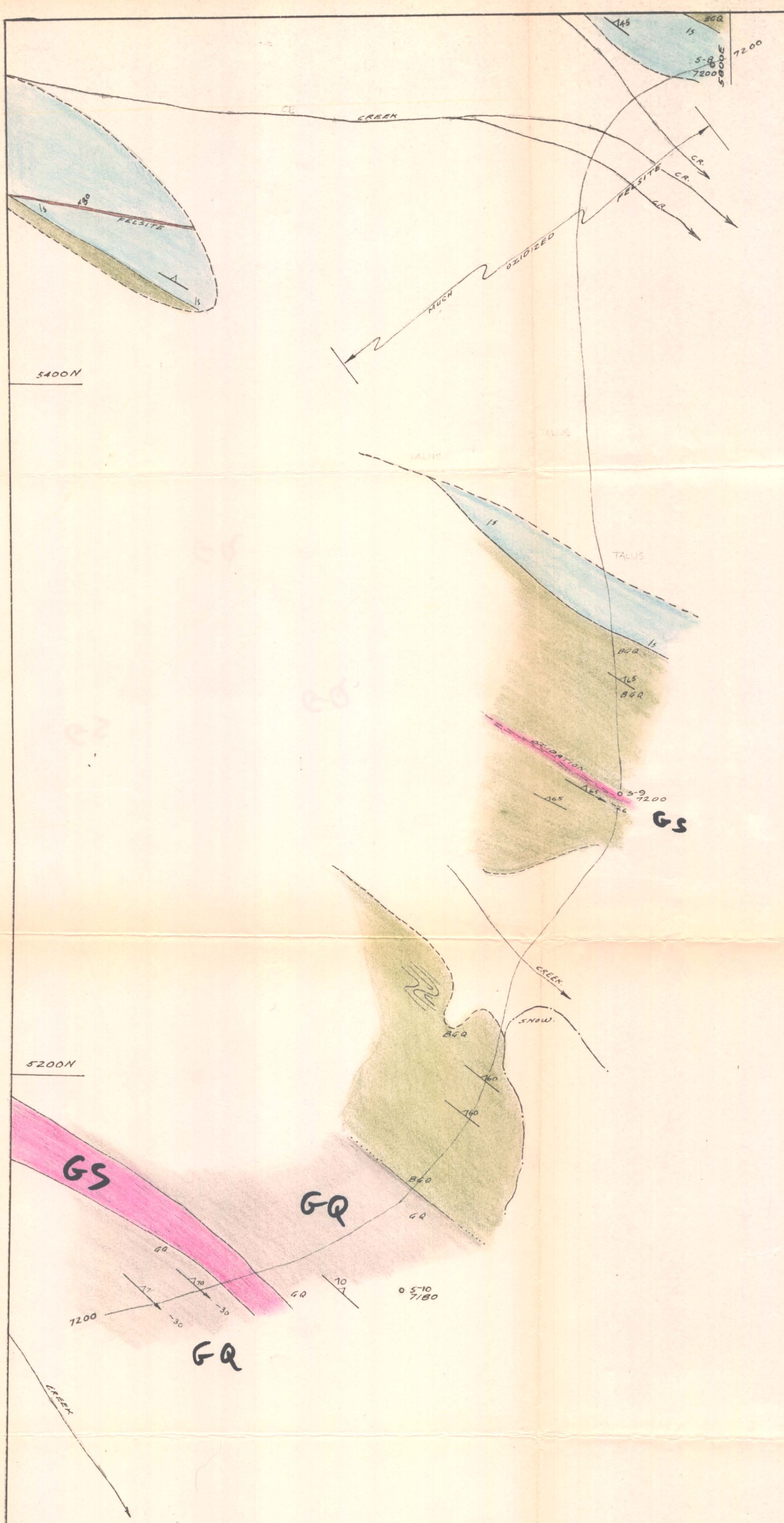
Department of  
Mines and Petroleum Resources  
ASSESSMENT REPORT  
NO. 546 MAP 3



TEDDY GLACIER MINES VANCOUVER B.C.		
PROPERTY: BELL G.A.	LOCATION: REVELSTOCK, B.C.	SUBJECT: SURFACE GEOL.
SCALE: 1" = 20'	DATE: SEPTEMBER 1963.	SHEET NO. 3 J.S.



M4



Department of  
 Mines and Petroleum Resources  
 ASSESSMENT REPORT  
 NO. 546 MAP 4



TEDDY GLACIER MINES. VANCOUVER B.C.		
PROPERTY: BELL CR.	LOCATION: REVELSTONE M.D.	SUBJECT: SURFACE GEOL.
SCALE: 1" = 20'	DATE: SEPTEMBER 1969.	SHEET: No 4



MS

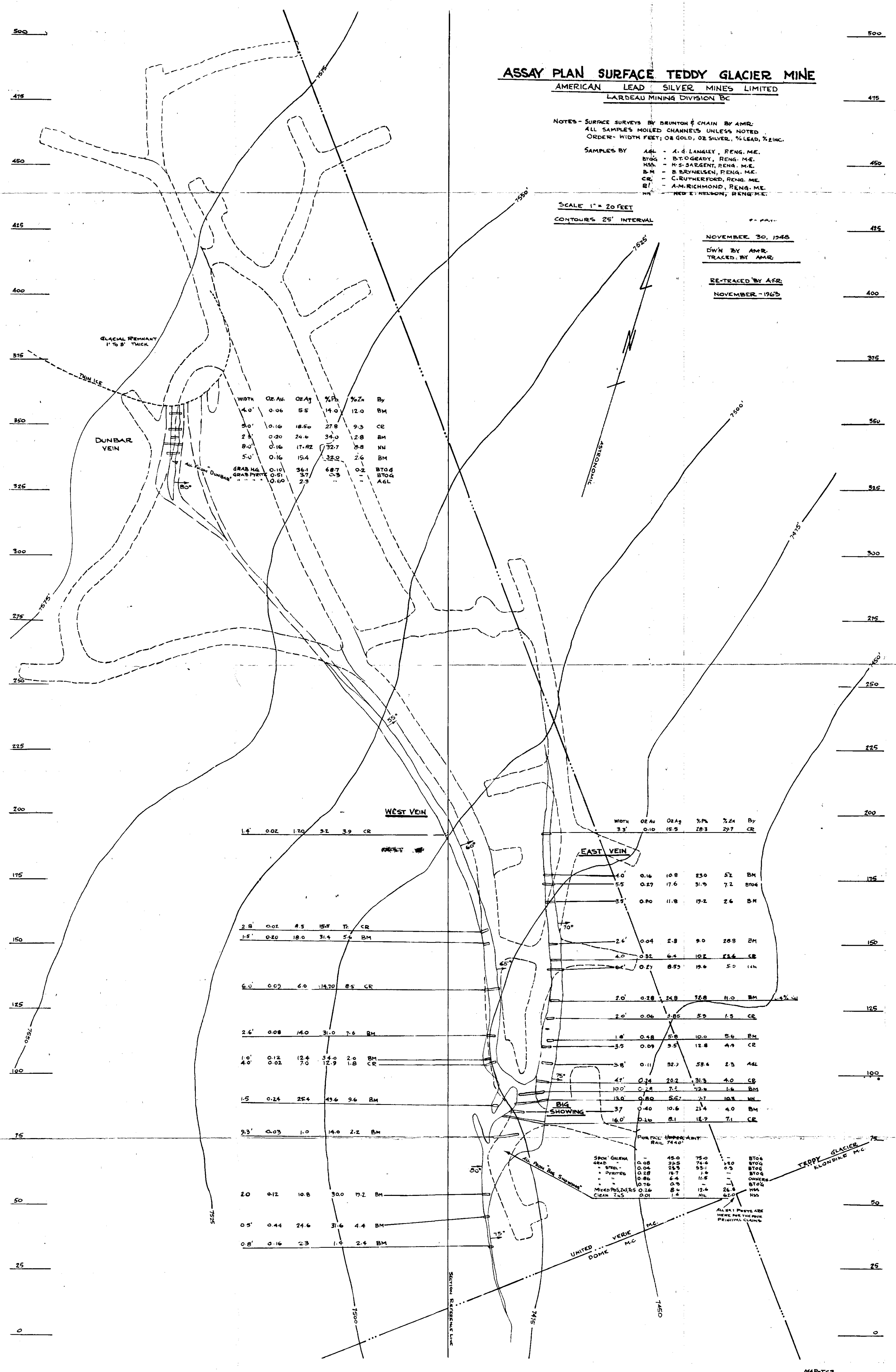
Department of  
Mines and Petroleum Resources  
ASSESSMENT REPORT  
NO. 546 MAP 5

**ASSAY PLAN SURFACE TEDDY GLACIER MINE**  
AMERICAN LEAD SILVER MINES LIMITED  
LARDEAU MINING DIVISION BC

NOTES - SURFACE SURVEYS BY BRUNTON & CHAIN BY AMR;  
ALL SAMPLES MOILED CHANNELS UNLESS NOTED  
ORDER - WIDTH FEET, OZ GOLD, OZ SILVER, % LEAD, % ZINC.  
SAMPLES BY  
AHL - A. G. LAHALEY, RENG. M.E.  
BTOG - B. T. O'GRADY, RENG. M.E.  
HSA - H. S. SARGENT, RENG. M.E.  
BM - B. BRYMELSEN, RENG. M.E.  
CR - C. RUTHERFORD, RENG. M.E.  
E1 - A. M. RICHMOND, RENG. M.E.  
NN - NED E. NELSON, RENG. M.E.

SCALE 1" = 20 FEET  
CONTOURS 25' INTERVAL

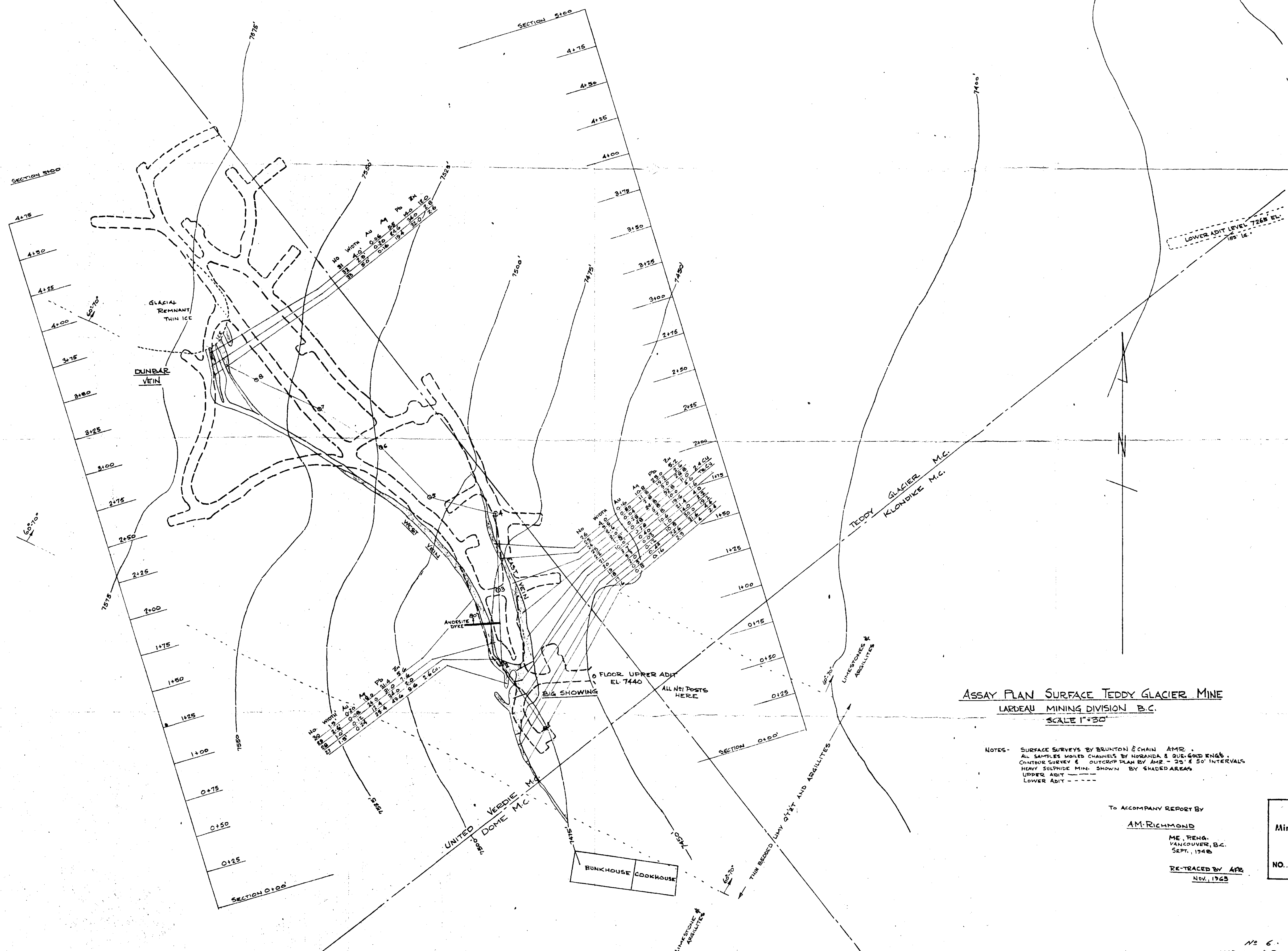
NOVEMBER 30, 1948  
DWN BY AMR  
TRACED BY AMR  
RE-TRACED BY AFR  
NOVEMBER - 1963



546



M6



ASSAY PLAN SURFACE TEDDY GLACIER MINE  
 LARDEAU MINING DIVISION B.C.  
 SCALE 1"=30'

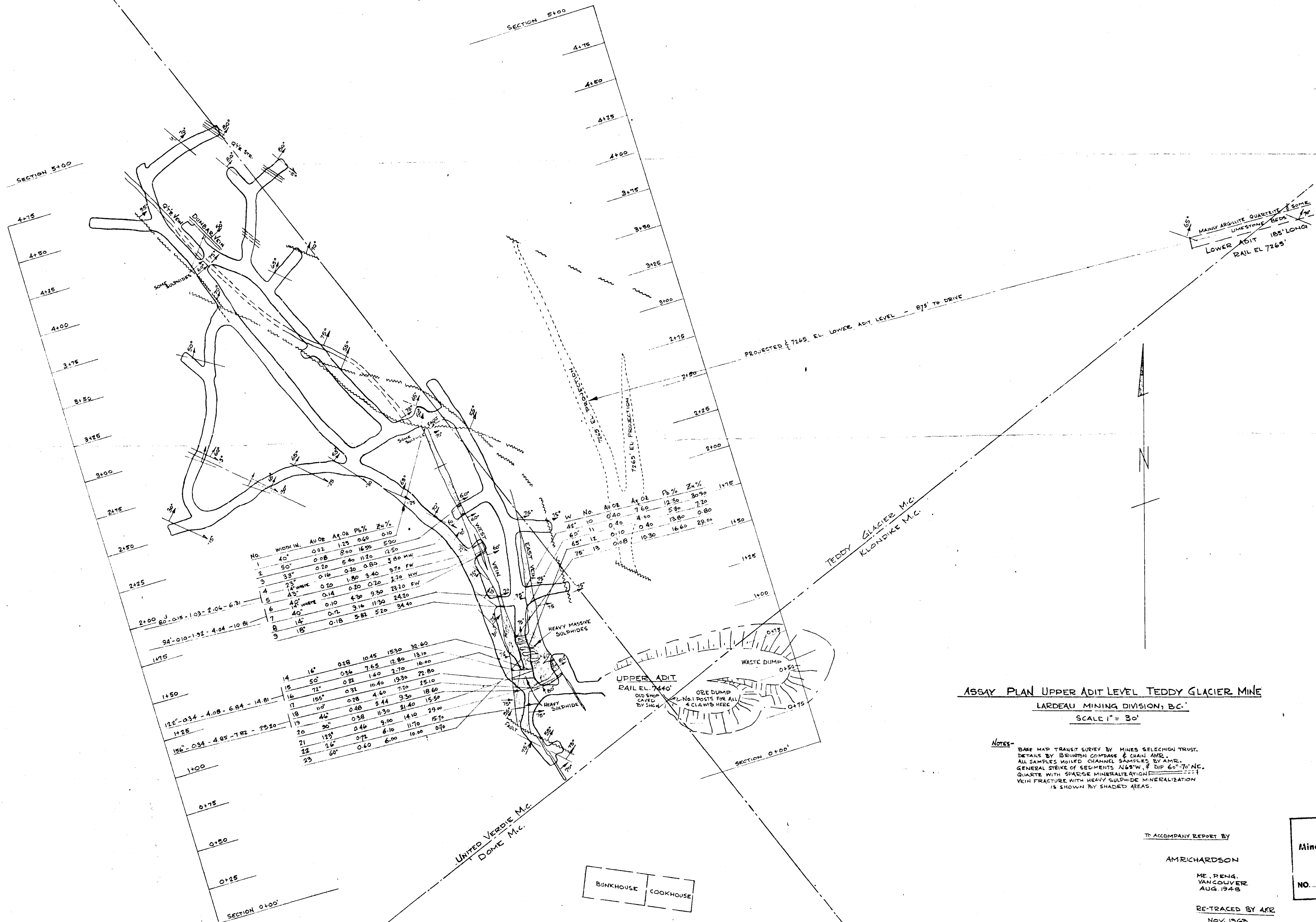
NOTES - SURFACE SURVEYS BY BRUNTON & CHAIN AMR.  
 ALL SAMPLES MOILED CHANNELS BY NIGRANDA & DUB-GOOD ENGS.  
 CONTROL SURVEY & OUTCROP PLAN BY AMR - 25' & 50' INTERVALS.  
 HEAVY SULPHIDE MIN. SHOWN BY SHADED AREAS.  
 UPPER ADIT - - - -  
 LOWER ADIT - - - -

TO ACCOMPANY REPORT BY  
 AM. RICHMOND  
 ME. PENG.  
 VANCOUVER, B.C.  
 SEPT. 1948  
 RE-TRACED BY APR  
 NOV. 1963

Department of  
 Mines and Petroleum Resources  
 ASSESSMENT REPORT  
 NO. 546 MAP 6



M7



ASSAY PLAN UPPER ADIT LEVEL TEDDY GLACIER MINE  
 LARDEAU MINING DIVISION, B.C.  
 SCALE 1" = 30'

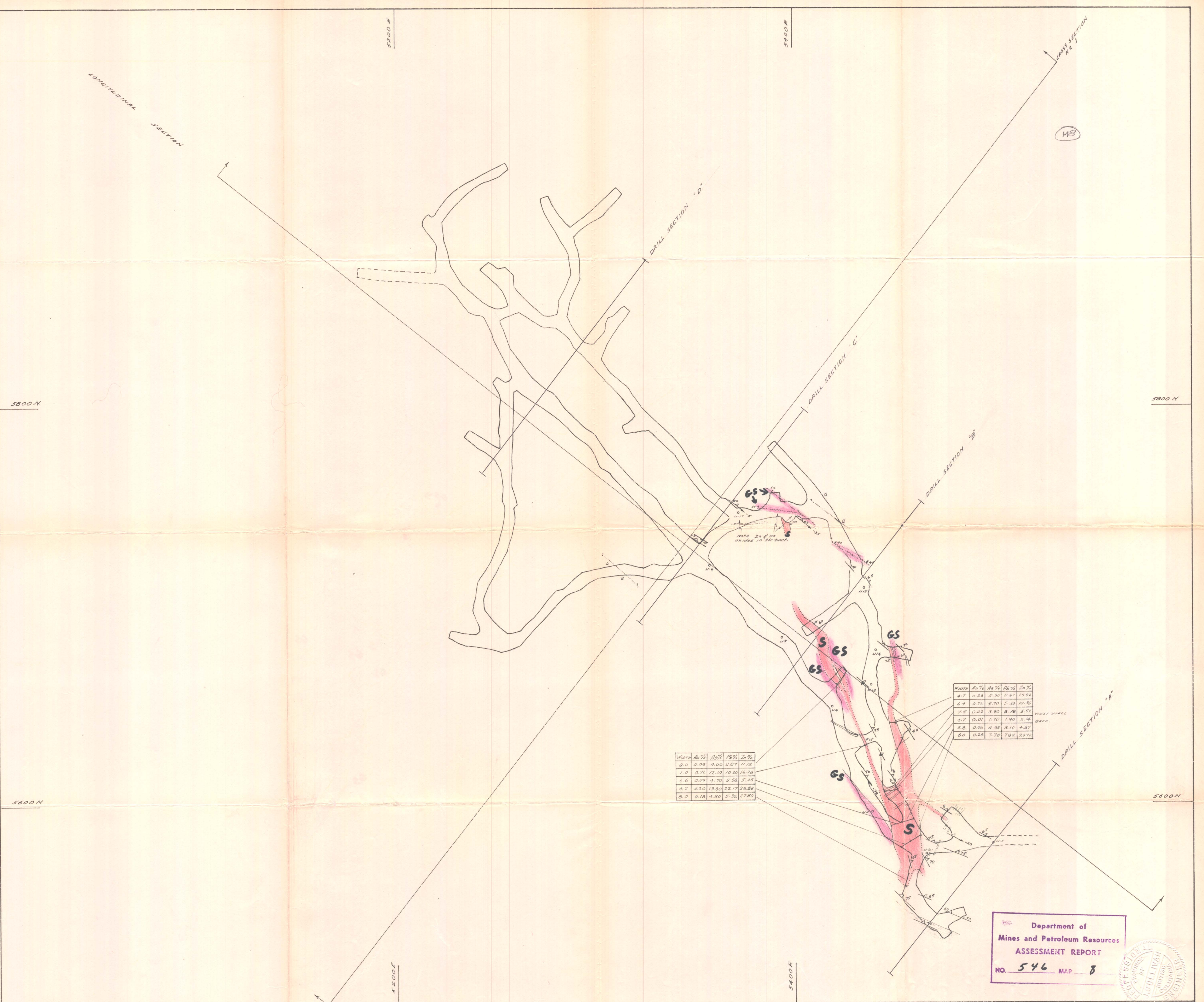
Notes -  
 BASE MAP TRANSIT SURVEY BY MINES SELECTION TRUST.  
 DETAILS BY BEUDON COMPASS & CHAIN SURV.  
 ALL SAMPLES MOILED CHANNEL SAMPLES BY AMR.  
 GENERAL STRIKE OF SEDIMENTS N60W, 8° DIP 60° TO NE.  
 QUARTZ WITH SPARSE MINERALIZATION  
 VEIN FRACTURE WITH HEAVY SULPHIDE MINERALIZATION IS SHOWN BY SHADED AREAS.

TO ACCOMPANY REPORT BY  
 AMRICHARDSON  
 ME, PENG.  
 VANCOUVER  
 AUG 1948  
 RE-TRACED BY AFR  
 NOV. 1963

Department of  
 Mines and Petroleum Resources  
 ASSESSMENT REPORT  
 NO. 546 MAP 7

MAP NO 7





Width	Au %	Ag %	Pb %	Zn %
8.0	0.08	4.00	2.87	11.12
7.0	0.92	12.10	10.20	16.28
6.6	0.09	4.70	5.58	5.25
4.3	0.20	13.80	22.17	28.58
8.0	0.18	4.80	5.32	27.80

Width	Au %	Ag %	Pb %	Zn %
4.7	0.28	5.30	5.47	29.92
6.4	0.72	5.70	5.30	10.76
7.5	0.02	3.90	8.48	5.52
3.7	0.01	1.70	1.90	2.14
5.8	0.06	4.35	3.10	4.87
6.0	0.28	7.70	7.82	29.72

WEST WALL BACK.

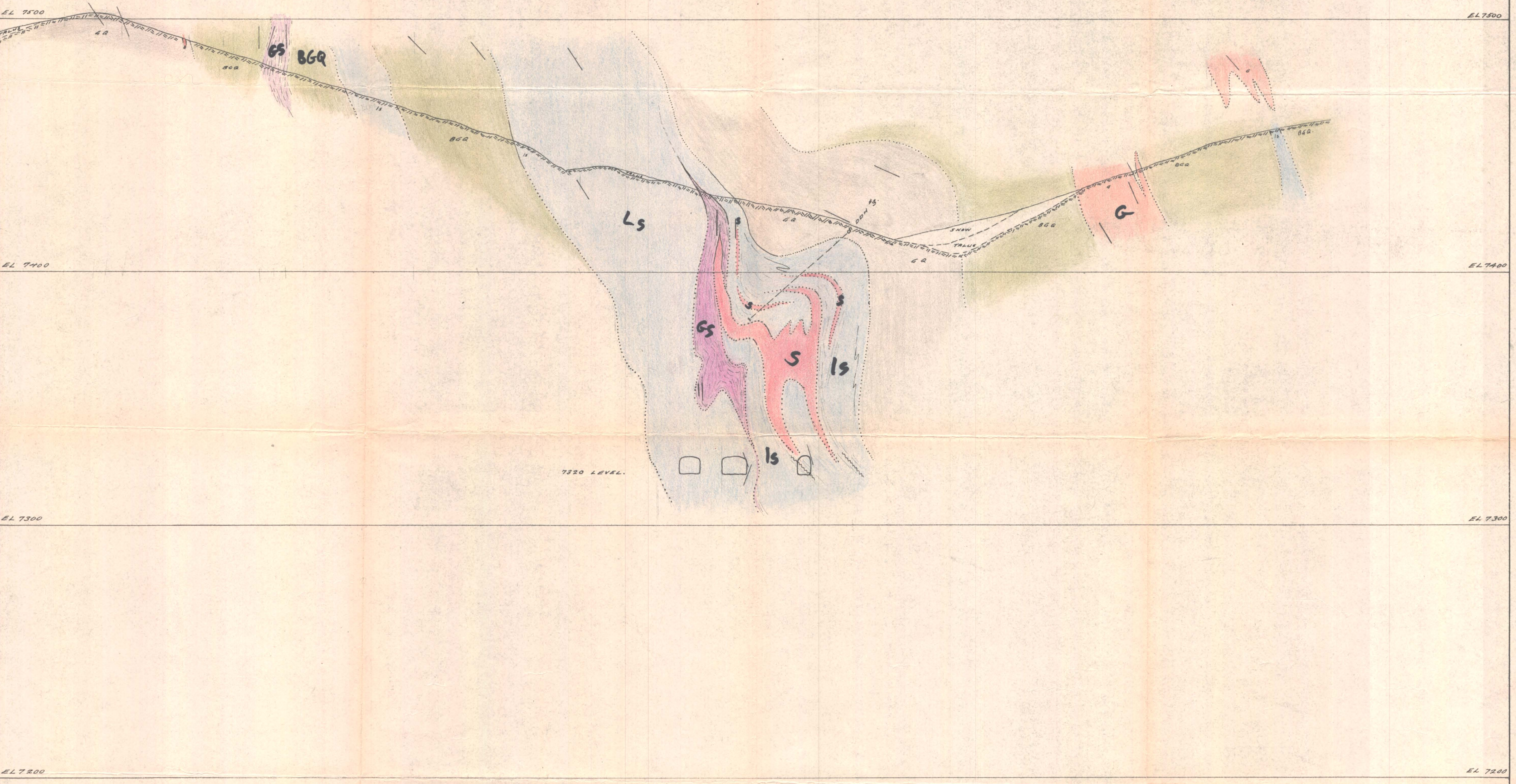
Department of  
Mines and Petroleum Resources  
ASSESSMENT REPORT  
NO. 546 MAP 8



TEDDY GLACIER MINES VANCOUVER, B.C.		
PROPERTY: BELL #8.	LOCATION: REVELSTOCK, B.C.	SUBJECT: UNDERGROUND GEOL.
SCALE: 1" = 20'	DATE: SEPTEMBER, 1963.	SHEET NO: 4-1



(M9)



Department of  
Mines and Petroleum Resources  
ASSESSMENT REPORT  
NO. 546 MAP 9



TEDDY GLACIER MINES		
PROPERTY: BALL CR	LOCATION: REVELSTONE MD	SUBJECT: G&M X-SECTION
SCALE: 1" = 20'	DATE: SEPTEMBER, 1963.	SNBET: X-SECTION No. 1.

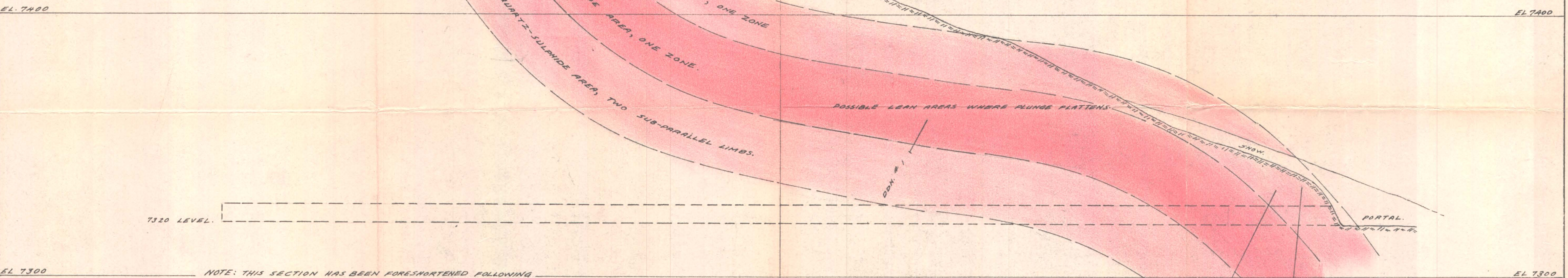


M10

DIAGRAMATIC REPRESENTATION OF THE PLUNGING FOLD THEORY.

SNOW  
DUNBAR SHOWING  
AS LOCATED IN 1952.

all colored  
red(s)



NOTE: THIS SECTION HAS BEEN FORESHORTENED FOLLOWING THE RULES OF PROJECTION. THUS THE PLUNGE ANGLES ARE EXAGGERATED.

Department of  
Mines and Petroleum Resources  
ASSESSMENT REPORT  
NO. 546 MAP 10



TEDDY GLACIER MINES. VANCOUVER, B.C.		
PROPERTY: BELL GROUP	LOCATION: REVELSTOKE, M.D.	SUBJECT: LONG. SECTION
SCALE: 1" = 20'	DATE: SEPT. 1963.	BY: JL.