

551

CHITA CREEK

GEOCHEMICAL REPORT

AUTHOR: H.W. Agnew, BA., MSc.

ENDORSED BY: John De Leen, BAsC., MASc., E.M., P.Eng. No. 3675

Vancouver, B.C.

April 29th, 1964.

CHITA CREEK

GEOCHEMICAL REPORT

CLAIMS: Chita Claims consisting of Chita 1A group -
Chita Mineral Claim Numbers 1 to 4 inclusive
11 to 22 "
43 and 44
57 and 58

and Chita 1B group

Chita Mineral Claim Numbers 5 to 10 inclusive
45 to 52 inclusive
59 to 64 inclusive

LOCATION:

Lower Taseko Lake area and its confluence
with Chita Creek
Latitude 51° Longitude 123°
Southwest, Clinton M.D.
British Columbia.

AUTHOR: H.W. Agnew, BA., MSc.

ENDORSED BY:

John De Leen, BAsC., MASc., E.M., P. Eng. No. 3675

OWNED BY: PHELPS DODGE CORPORATION
of CANADA, LIMITED,

DATES of WORK: June 3 to July 4, 1963

T A B L E O F C O N T E N T S

	<u>Page No.</u>
Summary	I
Location	1
Claims	1
Geology	1
Geochemistry -	1
Method	2
Interpretation	2
Appendix - Claims List	II
Accounting Statement	

<u>Maps</u>	<u>In Pocket</u>
1 Location map of Chita mineral claims	"
2 Mineral Claim Groups - 1A and 1B	"
3 Soil Sample Survey map	"

<p>Department of Mines and Petroleum Resources ASSESSMENT REPORT</p> <p>NO. 551 MAP</p>
--

GEOCHEMICAL REPORT

CHITA CREEK

SUMMARY:

A geologist and four assistants spent about a month, June 3 to July 4, 1963, in completing a detailed geochemical survey on the Chita claims.

Previous work (1962) had disclosed widespread chalcopyrite mineralization and 68 mineral claims had been staked to cover the area.

Further detailed prospecting, mapping and sampling in 1963 resulted in the decision to relinquish some of the staked ground and 28 claims will be allowed to expire.

While prospecting, soil samples were taken at about 500 foot intervals in the course of the traverses and results of this led to the detailed survey described herein.

This report, together with a total of 750 feet of diamond drilling comprises the work to be applied as assessment on the 40 remaining claims in the Chita Groups.

LOCATION: 51° 123° S.W. (Location map of Chita Mineral Claims in pocket)

The center of the claim group is situated about 2 miles almost due east of Lower Taseko Lake and its confluence with Chita Creek.

Access to the area was via fixed wing aircraft from Vancouver to a base camp on Upper Taseko Lake hence by helicopter to the claims.

CLAIMS: (Mineral Claim Groups - in pocket)

In 1962, a total of 68 claims were staked in the area. Assessment for 1964 and 1965 is being applied for, on only 40 claims, divided into two groups of 20 claims each; the 1A group consisting of Chita numbers 1, 2, 3, 4, 11, 12, 13, 14, 15, 16, 17, 18, 19, 20, 21, 22, 43, 44, 57, 58 mineral claims and the 1B group consisting of Chita numbers 5, 6, 7, 8, 9, 10, 45, 46, 47, 48, 49, 50, 51, 52, 59, 60, 61, 62, 63, 64 mineral claims. All the claims are owned by the Phelps Dodge Corporation of Canada, Limited.

GEOLOGY:

The geology of the claim group has been described in detail by Mr. D.C. Malcolm in a report filed with the Gold Commissioner in February 22, 1963 for assessment work on the Chita claims. Suffice it to say here that in general the claim area is underlain by a series of interbedded sedimentary and volcanic rocks into which has been intruded an acidic igneous rock locally referred to as feldspar porphyry.

GEOCHEMISTRY: (Soil sample survey map in pocket)

About 17 line miles of reconnaissance

soil sampling was completed in the course of the prospecting traverses, much of which was completed beyond the claim area. Samples were taken at approximately 500 foot intervals. Results of the reconnaissance sampling led to the detailed sampling in 3 areas, two of which lie mostly beyond the claims and the third lying entirely within the claim group is described below. This soil sample grid covers claim numbers 1 to 8 inclusive and 12 to 20 inclusive and was the only area which provided anomalous results.

Samples were taken at 50 foot intervals along lines 500 feet apart. A total of 14.8 line miles of soil sampling was completed in this grid.

Method

Samples of soil were obtained by using augurs and from a uniform depth of 18 inches below the surface where at all possible.

Samples were tested by using the Rubeanic Acid Test for copper in soils and the results, based on colour intensity, divided into four categories i.e. - background, positive, double positive and triple positive, as shown on the map. Due to the often slight differences in intensity between each of the categories as well as the numerous occurrences of minor chalcopyrite mineralization distributed throughout the area and taking into consideration the topography, only the double and triple positives have been used for the present in mapping the anomalous areas.

Interpretation

Using only double and triple

positives, the following anomalous areas appear to reflect fairly directly copper mineralization in the underlying rocks:

1. This anomaly is located near the southeast boundary of claim numbers 6 and 8. The anomaly strikes N.E., averages 150 feet in width and is 1,600 feet long. The area of the anomaly lies immediately below an occurrence of disseminated chalcopyrite in a monzonite or granitic porphyry lying to the northeast but it appears that the copper mineralization extends further to the southwest than the surface mapping suggests.

2. Four hundred feet to the northwest and approximately parallel to the No. 1 mineral claim, a second anomaly has approximately the same length though it is somewhat wider.

The southern portion of this anomaly coincides with minor chalcopyrite mineralization exposed in a highly altered porphyritic rock. Intensity of the anomaly suggests a higher grade of copper mineralization underlying this anomaly than is reflected by the No. 1 anomaly.

3. This anomaly which covers the major portion of Chita No. 4 mineral claim is approximately 1,500 feet in length and varies in width from 200 to 1,200 feet. The southern portion of the anomaly coincides with known chalcopyrite mineralization in porphyritic monzonite or granite rocks. The northern portion of the anomaly overlies the porphyry sediment contact.

4. An area, 1,500 feet in length by 400 feet in width, covers parts of claims numbers 1, 2 and 3 and is indicated as anomaly No. 4.

The southern portion of this anomalous area is underlain by pyritized sedimentary rocks which probably contain minor chalcopyrite mineralization.

The northern portion of the anomaly is underlain by a flat lying, dyke-like apophyse of the main porphyry mass lying to the south. The "dyke" where exposed contains no apparent copper mineralization. Above this anomaly no copper mineralization has been noted and it is, therefore, thought to be a reflection of a relatively immediate source.

5. This anomaly covers the major portion of the western half of Chita No. 2 mineral claim. The area is underlain by sedimentary and volcanic rock with minor pyrite.

Numerous other anomalies are scattered throughout the claim area. These are either too small to be of further interest or are apparently the result of concentrations of copper particles in the soil provided by surface drainage.

Report by: H.W. Agnew

H.W. Agnew, BA., MSc.

ENDORSED BY: John De Leen

John De Leen, B.A.Sc., M.A.Sc., E.M.,
P. Eng. No. 3675

Vancouver, B.C.

April 29th, 1964.

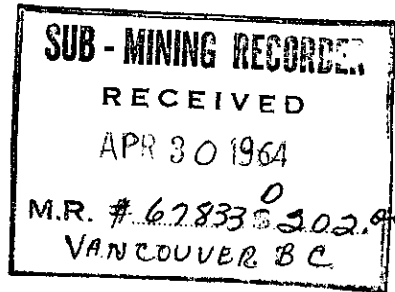
APPENDIX: Chita Creek Mineral Claims List

<u>1A Group</u>	<u>Record No.</u>
Chita No. 1	9142
Chita No. 2	9143
Chita No. 3	9144
Chita No. 4	9145
Chita No. 11	9152
Chita No. 12	9153
Chita No. 13	9154
Chita No. 14	9155
Chita No. 15	9156
Chita No. 16	9157
Chita No. 17	9158
Chita No. 18	9159
Chita No. 19	9160
Chita No. 20	9161
Chita No. 21	9162
Chita No. 22	9163
Chita No. 43	9184
Chita No. 44	9185
Chita No. 57	9220
Chita No. 58	9221

<u>1B Group</u>	<u>Record No.</u>
Chita No. 5	9146
Chita No. 6	9147
Chita No. 7	9148
Chita No. 8	9149
Chita No. 9	9150
Chita No. 10	9151
Chita No. 45	9208
Chita No. 46	9209
Chita No. 47	9210
Chita No. 48	9211
Chita No. 49	9212
Chita No. 50	9213
Chita No. 51	9214
Chita No. 52	9215
Chita No. 59	9222
Chita No. 60	9223
Chita No. 61	9224
Chita No. 62	9225
Chita No. 63	9226
Chita No. 64	9227

DOMINION OF CANADA:
PROVINCE OF BRITISH COLUMBIA.
To Wit:

In the Matter of



I, *Haddon W. Agnew*
of *Vancouver*

in the Province of British Columbia, do solemnly declare that

*Expenditures: Chita mineral claims 1963
for geochemical survey*

<i>Resident Geologist</i>	<i>J. Deleen</i>	<i>June 28-30</i>	<i>\$ 300.00</i>
<i>Project Geologist</i>	<i>H. W. Agnew</i>	<i>June 2 - July 5</i>	<i>890.00</i>
<i>Assistant</i>	<i>J. Tough</i>	<i>June 2 - July 4</i>	<i>512.50</i>
<i>Assistant</i>	<i>T. Wilkinson</i>	<i>June 2 - July 4</i>	<i>467.50</i>
<i>Assistant</i>	<i>R. Young</i>	<i>June 2 - July 4</i>	<i>385.00</i>
<i>Assistant</i>	<i>H. Reid</i>	<i>June 2 - July 4</i>	<i>385.00</i>

Total Wages *\$ 2940.00*

Camp and Cookery *893.96*
Transportation *1161.81*
General field expense *92.45*

Total expenses *\$ 5088.22*

And I make this solemn declaration conscientiously believing it to be true, and knowing that it is of the same force and effect as if made under oath and by virtue of the "Canada Evidence Act."

Declared before me at the *city*
of *Vancouver*, in the
Province of British Columbia, this *30th*
day of *April*, 1964, A.D. *H.W. Agnew*

Clarence McRae

A Commissioner for taking Affidavits within British Columbia or
A Notary Public in and for the Province of British Columbia.

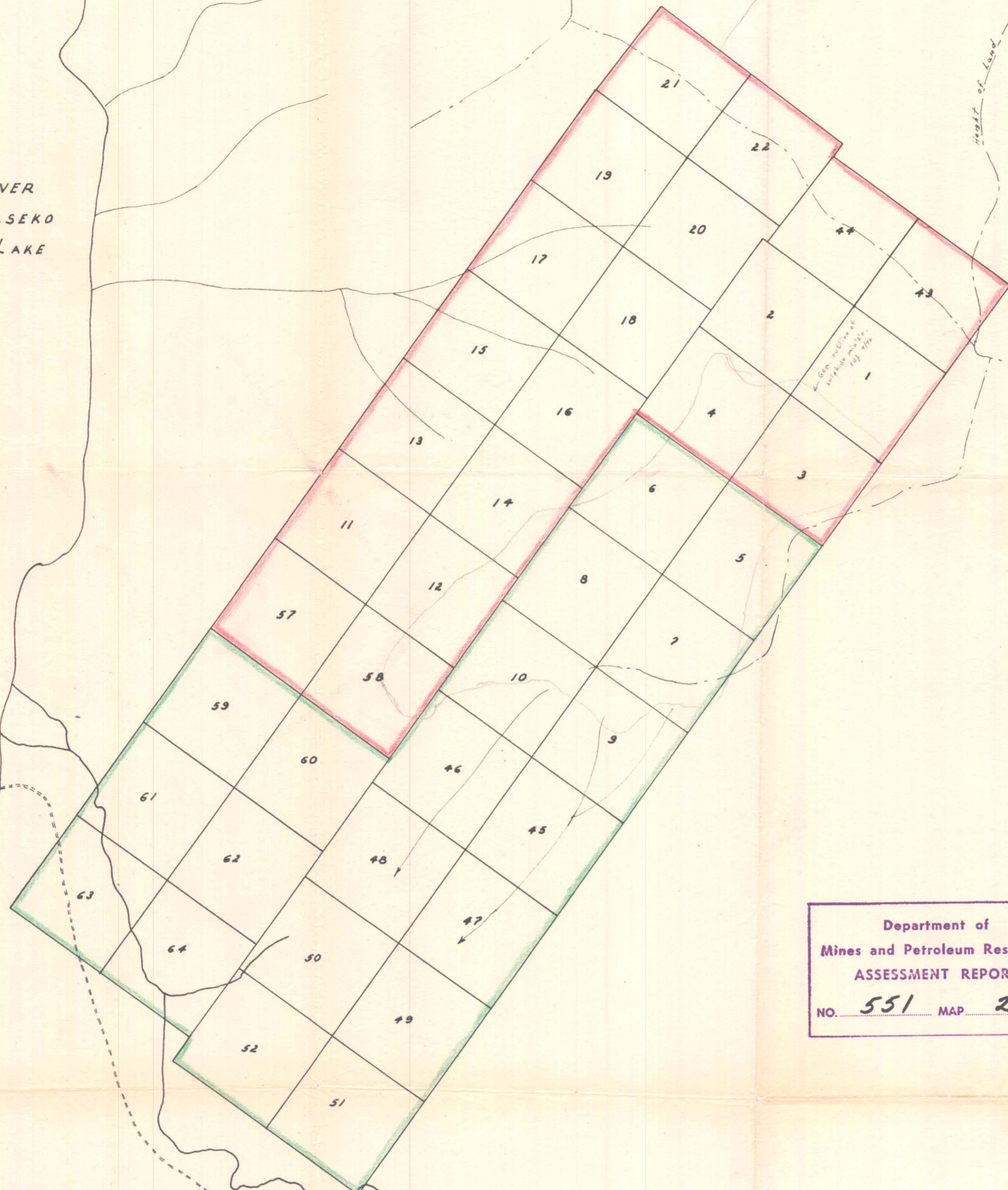
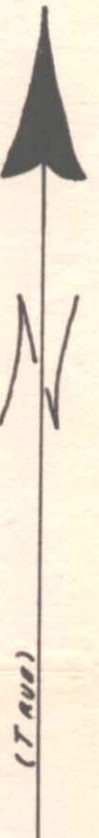
★0

Sub-mining Recorder

LOWER
TASEKO
LAKE

M1

Height of Land



- Group I.A.
- Group I.B.

Department of
Mines and Petroleum Resources
ASSESSMENT REPORT
NO. 551 MAP 2

To Accompany Geochemical Report By H.W. Agnew
& W. Meyer on the Chita Mineral Claims, Taseko
Lake, Clinton M.D., B.C., Dated April 29, 1964.

PHELPS DODGE CORPORATION OF CANADA, LIMITED VANCOUVER OFFICE			
CHITA MINERAL CLAIM GROUPS CLINTON M.D., B.C.			
<i>H.W. Agnew</i>	<i>W. Meyer</i>	SCALE: 1" = 1000'	DATE: APRIL, 1964
		SURVEYED BY: R.M.	DRAWN BY: T.W.



- BACKGROUND
- POSITIVE
- DOUBLE POSITIVE
- TRIPLE POSITIVE

To Accompany Geochemical Report By
 H.W. Agnew & W. Meyer on the Chita Claims,
 Taseko Lake, Clinton M.D., B.C., Dated April 29, 1964.

Department of
 Mines and Petroleum Resources
 ASSESSMENT REPORT
 NO. 551 MAP 3

PHELPS DODGE CORPORATION OF CANADA, LIMITED
 VANCOUVER OFFICE

CHITA CREEK AREA
 SOIL SAMPLE SURVEY

SCALE: 1" = 500' DATE: JAN., 1964 SURVEYED BY: R.M. DRAWN BY: H.W. Agnew W. Meyer T.W.

