

GEOLOGICAL REPORT
THE POGO CLAIM GROUP 92C/16E

LOCATION - The Pogo Group (48° 124' NE) is located in the Victoria Mining Division, Cowichan Lake Land District, approximately 20 miles west of Duncan, and lies on Land Survey Blocks 54 and 953, north of the Chemainus River.

REPORT BY - E.M. Wilson, Geological Engineer, P.Eng.(Ont.)
SUPERVISED - E.M. Wilson
CLAIM OWNER - E.M. Wilson
WORK FOR - E.M. Wilson

DATE OF WORK - May 13 to May 16 inclusive, 1964.
July 6 to July 7 inclusive, 1964.

SEPTEMBER 24, 1964

00566

566

TABLE OF CONTENTS

Appendix A	-	Statement of Qualifications	
Appendix B	-	Statement of Costs of Survey	
Page 1	-	Introduction	
Page 2	-	Description	
Page 3	-	Procedure	
Page 4	-	General Geology and Mineralization	
		(a) Geology	
		(b) Mineralization	
Page 6	-	Conclusions	
In Pocket	-	Geological Maps	1 + 2

Department of Mines and Petroleum Resources ASSESSMENT REPORT	
NO. 566	MAP

APPENDIX A

STATEMENT OF QUALIFICATIONS OF
E. M. WILSON, P.ENG. ONTARIO

EDUCATION - B.A.Sc. Geology - U.B.C. 1952

EXPERIENCE - 1952-1953 - Exploration Geologist
Transcontinental Resources
Vancouver, B. C.

1953-1956 - Field Engineer
Orchan Uranium Mines
Lake Athabaska, Saskatchewan,
and Ontario.

1956-1957 - Mine Geologist
Faraday Uranium Mines
Bancroft, Ontario.

1957-1963 - Geologist
Imperial Oil Limited
Edmonton, Alberta.

1963-Present - Assistant Mining Geologist
Canadian Pacific Oil and
Gas Limited, Mining Division,
Calgary, Alberta.

APPENDIX B

STATEMENT OF COSTS OF SURVEY
POGO MINERAL CLAIM GROUP

Geologist:

Wages - 6 days @ \$35.00 - \$ 210.00

Helper:

Wages - 6 days @ \$15.00 - \$ 90.00

Truck Rental for 6 days approximately - \$ 75.00

Drafting, printing, etc. - \$ 25.00

\$ 400.00

I make this solemn declaration conscientiously believing it to be true and knowing that it is of the same force and effect as if made under and by virtue of the Canada Evidence Act.

Declared before me at)
the *city of Calgary*)
in the Province of Alberta)
this *25* day of *September*)
A.D. 1964.)

Sam Wilson
.....

W. Kelly
.....

A Commissioner for taking Affidavits within Calgary, or a Notary Public in and for the Province of Alberta.

APPENDIX B

STATEMENT OF COSTS OF SURVEY
POGO MINERAL CLAIM GROUP

Geologist:

Wages - 6 days @ \$35.00 - \$ 210.00

Helper:

Wages - 6 days @ \$15.00 - \$ 90.00

Truck Rental for 6 days approximately - \$ 75.00

Drafting, printing, etc. - \$ 25.00

\$ 400.00

I make this solemn declaration conscientiously believing it to be true and knowing that it is of the same force and effect as if made under and by virtue of the Canada Evidence Act.

Declared before me at)
the *City of Calgary*)
in the Province of Alberta)
this *25th* day of *September*)
A.D. 1964.)

Ern Wilson
.....

W. D. Kelly
.....

A Commissioner for taking Affidavits within Calgary, or a Notary Public in and for the Province of Alberta.

GEOLOGICAL REPORT
ON THE
POGO MINERAL CLAIM GROUP

INTRODUCTION:

The following report is submitted as requirements for the first year's assessment work on the Pogo Group of mineral claims.

The Pogo Group is situated about twenty miles west of Duncan, in the Victoria Mining Division. Minor copper, zinc and lead mineralization was noted in a slightly oxidized outcropping exposed along a logging road, and four claims, Pogo 1, 2, 3 and 4, were located on May 13, 1964, covering this showing. The writer and his associate each spent at least six days mapping and sampling the claims. Additional time was also spent doing geological mapping in the general area of the claims.

DESCRIPTION:

The claims are located about twenty miles west of Duncan, less than a mile north of the Chemainus River, and lie on Land Survey Blocks 54 and 953 at an elevation of about 2,000 feet. The area has been logged off, consequently is supplied with good logging roads which permit easy access to Duncan. Although the outcrop is relatively scarce, the overburden is comparatively light.

PROCEDURE:

A base line was established along the claim location line with right angle offsets turned off each 200 feet which served as control lines during mapping. The intervening areas between control lines were carefully scrutinized to locate all rock outcrops. In addition to mapping, the showing was considered to be carefully sampled, the results of which are included with Map No. 2. Two maps were prepared and are included with this report.

Map No. 1 - Scale 1" = 1400' \pm

This map illustrates the general geology in the vicinity of the claim group. Aerial photographs were used and reference was made to map accompanying Bulletin No. 37 by J.T. Fyles, British Columbia Department of Mines, whose work partially covers the area. Other mineral occurrences noted in the area are marked on this map.

Map No. 2 - Scale 1" = 50'

This map serves to indicate outcrop and rock type exposed on the claim group. A summary of the sampling results and locations is included with this map.

GENERAL GEOLOGY AND MINERALIZATION

GEOLOGY:

The claim area is underlain by rocks of the Permian Sicker series cut by sill-like members of the Karmutsen or Vancouver group. Granitic rocks comprising the Saanich granodiorite and Tertiary gabbro were mapped close by. Minor outcrops of Upper Cretaceous sediments were noted.

The Sicker sediments consisting of thin bedded sediments, locally black cherty argillites are tightly folded along axes trending northwest. The sill-like bodies of Karmutsen basalt or diabase (called gabbrodiorite in this report) generally parallel the bedding in the Sicker formation. In the vicinity of the claims just west of the showing the sill appears to parallel the steeply dipping west limb of a fold. In the vicinity of the showing the sill appears to transect this synclinal fold axis to occupy the east limb of the fold just south of the showing. The sill is several miles long and its width varies from 500 to 2,500 feet. The gabbrodiorite sill pinches or narrows in the vicinity of the showing. Local folding in the Sicker sediments was also noted at this point.

MINERALIZATION:

The mineral showing is located within a fractured fine grained phase of a gabbro-diorite sill which intrudes Sicker sediments predominantly black cherty argillites. Mineralization consisting of modest amounts of pyrrhotite, pyrite, chalcopyrite, sphalerite and galena is noted in disseminated form and also coating fracture planes within the gabbro-diorite sill.

The point of flexure of the sill, which also coincides with a pinching effect, appears to be the focal point of the mineralization. Local folding in the Sicker beds is also evident at this locality, which may have a bearing in the mineralization.

Approximately 4,500 feet southeast of the main showing, other rusty badly-weathered zones in the gabbro-diorite returned low values in zinc, copper and lead.

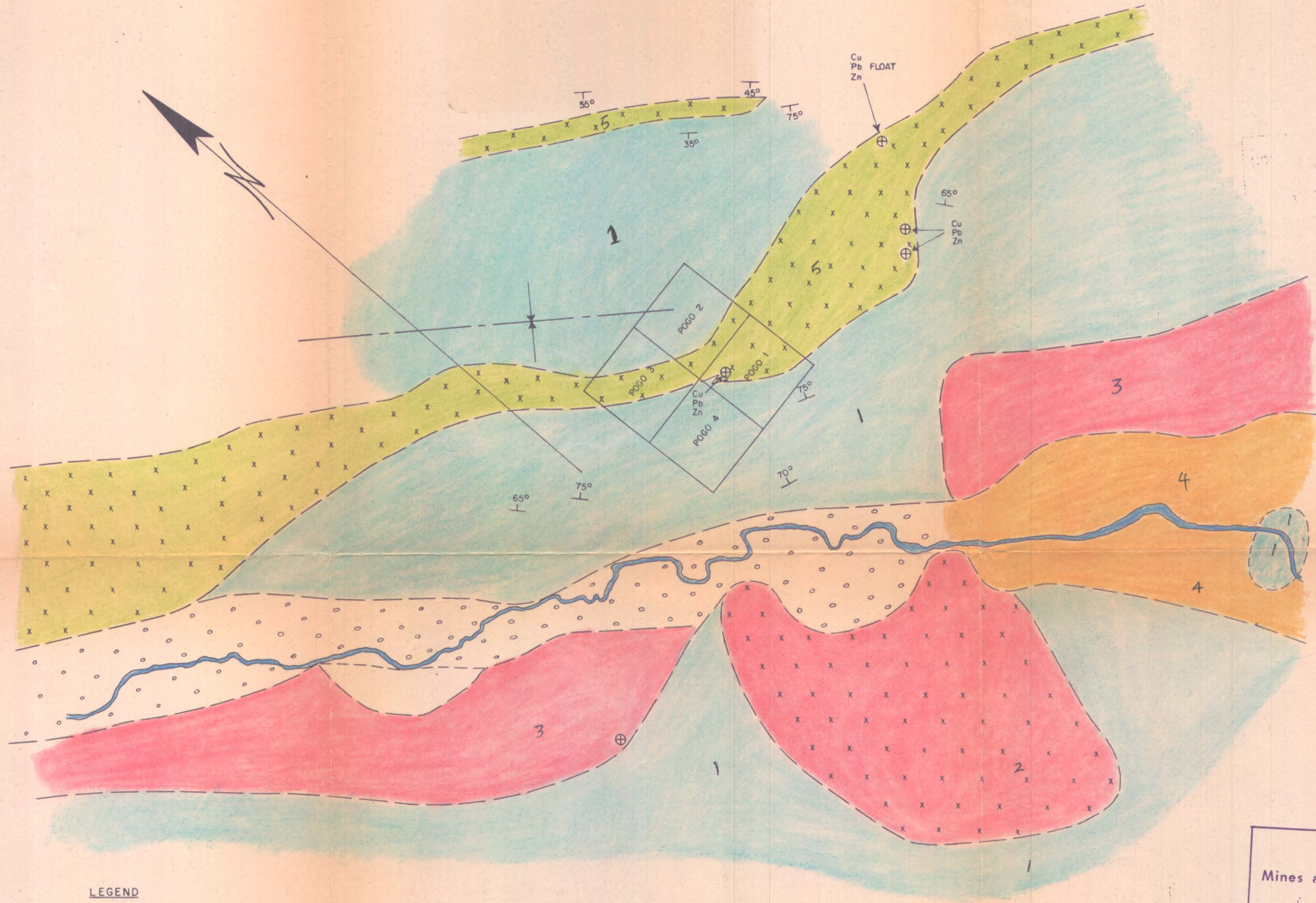
CONCLUSIONS

Although sampling results proved disappointing, mineralization is fairly widespread within a large structure of amenable rock types. Approximately 4,500 feet southeast of the main showing a grab sample of gabbro in a sheared rusty zone returned 0.72 percent zinc together with minor values in lead and copper. Mineral-wise the area is very interesting, and close scrutiny of the area may prove rewarding.

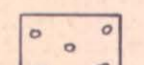
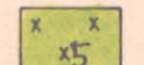


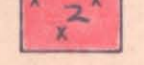
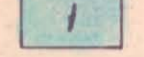
Respectfully submitted,

E.M. Wilson P.Eng.
.....
E.M. Wilson, P.Eng.(Ontario)

(11)



LEGEND

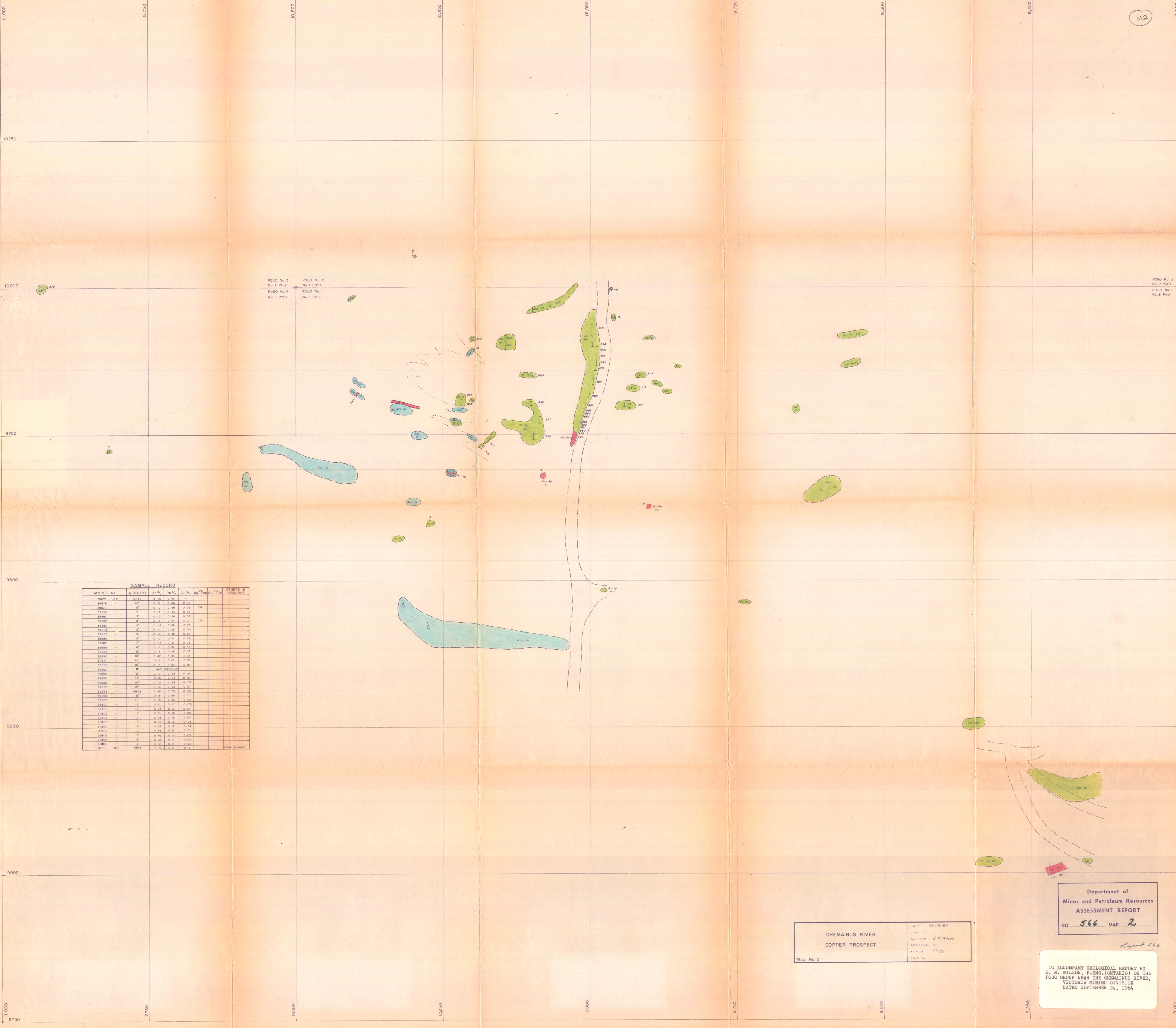
-  - Recent Alluvium
-  - Tertiary Gabbro
-  - Cretaceous Sandstone & Shale
-  - Jurassic Granodiorite
-  - Triassic Gabbro - Diorite
-  - Permian Sediments

TO ACCOMPANY GEOLOGICAL REPORT BY
 E. M. WILSON, P.ENG.(ONTARIO) ON THE
 POGO GROUP NEAR THE CHEMAINUS RIVER,
 VICTORIA MINING DIVISION
 DATED SEPTEMBER 24, 1964

Map No. 1	CHEMAINUS RIVER BASE METAL PROSPECT COWICHAN LAKE DISTRICT VANCOUVER ISLAND B.C.	DATE - 24/8/64 CONT INT - AUTHOR - E.M.W. APPROVAL BY - SCALE - 1" = 1400' (approx) FILE No. -
-----------	--	---

Department of
 Mines and Petroleum Resources
 ASSESSMENT REPORT
 NO. 566 Map 1

Report 566



POGO No. 3
No. 1 POST

POGO No. 2
No. 1 POST

POGO No. 4
No. 1 POST

POGO No. 1
No. 1 POST

POGO No. 2
No. 2 POST

POGO No. 1
No. 2 Post

SAMPLE RECORD

SAMPLE No.	WIDTH(Ft)	Zn%	Pb%	Cu%	Ag	Au	OTHERS & REMARKS
33976	C.E.	0.33	0.41				
33977	10'	0.30	0.32	0.23			
33979	5'	0.10	0.38	0.23			TK
33980	5'	0.17	0.33	0.25			
33981	5'	0.10	0.26	0.24			
33982	5'	0.15	0.31	0.24			TK
33983	5'	0.42	0.36	0.23			
33984	5'	0.17	0.22	0.23			
33985	5'	0.10	0.48	0.24			
33986	5'	0.10	0.41	0.24			
33987	5'	0.21	0.31	0.23			
33988	5'	0.15	0.31	0.23			
33989	5'	0.15	0.28	0.23			
33990	10'	0.42	0.33	0.23			
33991	10'	0.15	0.25	0.23			
33992	10'	0.16	0.26	0.21			
33993	5'	NOT RECOVERED					
33994	5'	0.10	0.33	0.23			
33995	15'	0.15	0.23	0.23			
33996	10'	0.10	0.28	0.23			
33997	12'	0.10	0.23	0.21			
33998	25x35	0.20	0.33	0.25			
33999	5'	0.15	0.28	0.21			
34000	10'	0.15	0.33	0.24			
34001	15'	0.31	0.17	0.23			
34002	10'	0.23	0.17	0.21			
34003	5'	0.31	0.16	0.23			
34004	10'	0.36	0.16	0.23			
34005	10'	0.38	0.12	0.23			
34006	5'	0.38	0.17	0.24			
34007	12'	0.38	0.15	0.21			
34008	5'	0.42	0.10	0.23			
34009	5'	0.38	0.17	0.23			
34010	5'	0.36	0.15	0.23			
34011	5'	0.36	0.15	0.23			
34012	5'	0.36	0.15	0.23			
34013	WT	0.72	0.17	0.13			SOUTH SHORING

CHEMAINUS RIVER
COPPER PROSPECT

Map No. 2

DATE 05/15/64
AUTHOR E.M. Wilson
APPROVAL
SCALE 1" = 50'
FILE NO.

Department of
Mines and Petroleum Resources
ASSESSMENT REPORT
NO. 566 MAP 2

TO ACCOMPANY GEOLOGICAL REPORT BY
E. M. WILSON, P. ENG. (ONTARIO) ON THE
FOGG GROUP NEAR THE CHEMAINUS RIVER,
VICTORIA MINING DIVISION
DATED SEPTEMBER 24, 1964

M2