

575

REPORT COVERING
MAGNETOMETER AND GEOCHEMICAL SURVEYS
ON THE
FRM (26-45) MINERAL CLAIMS
COQUIHALLA, B.C.
SIMILKAMEEN MINING DIVISION
49 Degrees - 120 Degrees N.W.

BY

A. D. WILMOT, P. ENG.
(DRAFTING BY E.W. JOHNSON, B.Sc.)

FOR

FORT RELIANCE MINERALS LIMITED

TABLE OF CONTENTS.

Geophysical Report

Introduction Page 1
Personnel Page 1
Method and Equipment Page 1
Results Page 1

Geochemical Report

General Page 4
Method Page 4
Results Page 4

Appendix I

Statement of Costs Page 5

Appendix II

Qualifications Page 7

Map

Magnetic contour plan and Geochemical
data combined.
Scale 1" equals 200'.

Department of
Mines and Petroleum Resources
ASSESSMENT REPORT
NO. 575 MAP

MAGNETOMETER SURVEY
OF THE
FRM (26-45) MINERAL CLAIMS
SIMILKAMEEN MINING DIVISION

I. Introduction:

The following report covers a magnetometer survey which was carried out between October 1st and October 15th inclusive on the FRM (26-45) Mineral Claims, Coquihalla, B.C.

The survey was conducted under the supervision of A.D. Wilmot, P. Eng., by E.W. Johnson, B.Sc., W.D. Munro, prospector, Ivan Staussgaard, prospector, and G.W. Stewart, assistant.

II. Method and Equipment:

The grid was run from a previously prepared base line (bearing 136 degrees True) and consisted of East-West cross lines run with compass and chain. Readings were taken every 100 feet on the cross lines, with soil samples being taken every 300 feet. Two magnetometers were used, the one over FRM (26-41) claims, being the Sharpes fluxgate type, Model PMF-3 with a range of 300,000 gammas. The other was the Arvella, which has a range of 60,000 gammas, and which was used on the claims FRM (42-45).

Magnetic ties were made twice daily on a base station with both instruments as a check on diurnal variation.

III. Results:

On the 16 claims covered with the PMF-3 magnetometer, four areas of strong readings were located. These lie in the north corner of FRM 28, in the east corner of FRM 30, in the south corner of FRM 32 and in the north corner of FRM 39 respectively. Several smaller zones of strong readings were also located, the most important being the one in the south corner of FRM 41 and the north corner of FRM 36.

All the zones are very irregular in shape but do tend to line up along a north trending line. It is interesting to note that three of the zones are located along a NW - SE line which would join the main workings with another shaft and adit located in the vicinity at line 7,200S - 800W.

The survey done with the Arvella magnetometer upon the four claims FRM 42, 43, 44 and 45 showed no zones of highly anomalous readings. The highest readings were in a small zone in the centre of FRM 45 and approximately 700 feet SE of a group of small high zones located on FRM 41 with the PMF-3 magnetometer.

A fairly large zone of slightly above average readings was located on FRM 44 adjoining and SE of a similar zone on FRM 40. The afore mentioned shaft is situated on the NW edge of this zone. Minor copper mineralization was noted in the dump from this shaft.

IV. Conclusions and Recommendations:

The geophysical work done during this summer has brought to light a number of areas in which more work could well be done. Certainly there seems to be some connection between rock types favourable to mineralization (as shown by the rock type in the main workings) and magnetometer results. More information is needed however before any conclusions can be drawn.

A. D. Wilmot

A. D. WILMOT

P. Eng.

Kelowna, B. C.
October 26, 1964.

GEOCHEMICAL REPORT
ON THE
FRM (26-45) MINERAL CLAIMS

SIMILKAMEEN MINING DIVISION

49 DEGREES - 120 DEGREES N.W.

BY
A. D. WILMOT, P. ENG.
(DRAFTING BY E. W. JOHNSON, B.Sc.)

FOR

FORT RELIANCE MINERALS LIMITED

GEOCHEMICAL SURVEY

I. General:

Between October 1st and October 15th in conjunction with a magnetometer survey, soil sampling was done on the FRM (26-45) mineral claims. This survey was also done under the supervision of A.D. Wilmot, P.Eng., by E.W. Johnson, B.Sc., W.D. Munro, prospector, Iwan Staussgaard, prospector, and G.W. Stewart, assistant.

II. Method and Equipment:

Samples were taken every 300 feet along the East-West lines of the magnetometer grid. The samples were obtained by means of augurs which helped to ensure that each sample was taken at the same silt horizon.

The samples were tested by using the Rubenic Acid method and the results plotted on the accompanying map.

III. Results:

Weakly anomalous results were obtained on lines 2800S, 6600S and 7200S at the stations shown on the map.

It was found that the stronger results on lines 6600S (to the west) and 7200S (to the east and west) coincide approximately with areas of higher than average magnetometer readings. Also present on line 7200S is an old shaft, samples from the dump of which show minor chalcopryrite. The soil testing done thus far, while not conclusive, could prove more valuable as further work adds more information to that known about the property.

A. D. Wilmot

Kelowna, B. C.
October 26, 1964.

A. D. WILMOT
P. Eng.

APPENDIX I

The following is a record of salaries, wages and expenses in connection with the Geochemical and Magnetometer surveys on the FRM (26-45) mineral claims.

1. Base Line Cutting.

Work performed by I. Staussgaard of 1160 21st Ave., Haney, B.C., and by G.W. Stewart of P.O. Box 694, Merritt, B.C., from September 30th to October 6th, 1964.

I. Staussgaard - 13 days @ \$15.00 per day	\$ 195.00
G.W. Stewart - 13 days @ \$15.00 per day	195.00

2. Geochemical and Geophysical Surveys.

Conducted by E.W. Johnson, R.R.#3, Kelowna, B.C., W.D. Munro, Box 630, Salmon Arm, B.C., I. Staussgaard, Haney, B.C., G.W. Stewart, Merritt, B.C., Between October 1st and October 15th, 1964.

E.W. Johnson - 15 days @ \$35.00 per day	\$ 525.00
W.D. Munro - 15 days @ \$15.00 per day	225.00
I. Staussgaard - 3 days @ \$15.00 per day	45.00
G.W. Stewart - 3 days @ \$15.00 per day	45.00

3. General Supervision

By A.D. Wilmot, Hobson Road, R.R.#4, Kelowna, B.C., during September 22, 23, 24, 28, 29 and October 2nd to October 15th, 1964.

A.D. Wilmot - 35 19 days @ \$35.00 per day	\$ 665.00
---	-----------

4. Drafting

By E.W. Johnson, R.R.#3, Kelowna, B.C.

11 days @ \$25.00 per day	275.00
---------------------------	--------

5. Consulting

J.A. Harquail, 3100-25 King St. West,
Toronto, Ontario

2 days @ \$100.00 per day	200.00
---------------------------	--------

Total Costs applicable for assessment work	\$2,370.00
--	------------

6. Distribution

\$100.00 to be applied on each of the following twenty claims - FRM 26 - 45 Mineral claims, with Record Numbers 493853 - 493872, dated October 29th, 1963.

AFFIDAVIT

I declare the above statement to be true and correct.

A. D. Wilmot

A. D. WILMOT.

APPENDIX II

Statement of Qualifications

The following is an outline of qualifications as required by Order-in-Council #1491:

E.W. Johnson - B.Sc. - General Science (Major in Geology).

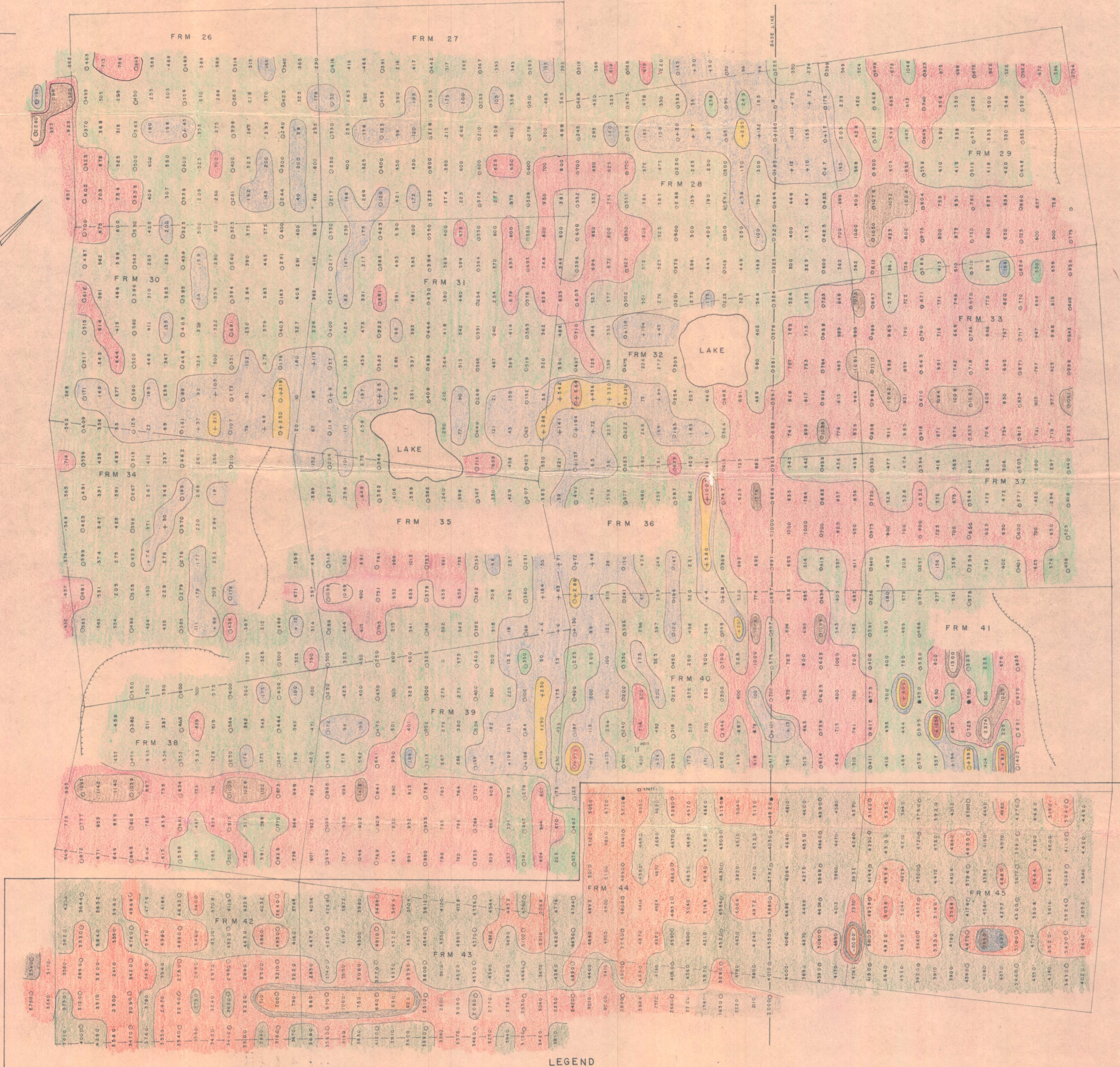
W.D. Munro - Prospector.

I. Staussgaard - Prospector

G.W. Stewart - Assistant

E.W. Johnson, W.D. Munro, and I. Staussgaard have all been previously employed on both geophysical and geochemical surveys.

49N
120W



LEGEND

PORTION OF SURVEY RUN WITH
PMF-3 MAGNETOMETER

- 210 Geochemical Sample Site (○ - Normal, ● - Anomalous)
- +475 and Relative Value of Magnetic Field in Gammas
- Magnetic Contours, Interval 400 Gammas
- Over 1000 Gammas
- 600 to 999 Gammas
- 200 to 599 Gammas
- 200 to 199 Gammas
- 600 to -201 Gammas
- 1000 to -601 Gammas
- 1400 to -1001 Gammas
- Under -1400 Gammas

Department of
Mines and Petroleum Resources
ASSESSMENT REPORT
NO. 575 MAP 1

LEGEND

- PORTION OF SURVEY RUN WITH
ARVELLA MAGNETOMETER
- Magnetometer Contour, Interval 1200 Gammas
- Over 7200 Gammas
 - 6000 to 7199 Gammas
 - 4800 to 5999 Gammas
 - 3600 to 4799 Gammas
 - 2400 to 3599 Gammas
 - 1200 to 2399 Gammas
 - 0 to 1199 Gammas
 - Under 0 Gammas

FORT RELIANCE MINERALS LIMITED
25 KING ST. W. TORONTO

MAGNETOMETER & GEOCHEMICAL SURVEY
FRM GROUP COQUIHALLA, B. C.

0 300 600 900 1200

A. D. WILMOT P. ENG.

OCT. 1964

575

