

GEOLOGICAL REPORT

o n

PENNY GROUP OF CLAIMS

Lat 57° Long 131° SE Quadrant

GALORE CREEK AREA

104E/3W

H.Naylor & W.St.C.Dunn, P.Eng

June 19 to Aug 23, 1964

CLAIMS HELD BY

A. C. RACICOT

Report for: RACICOT SYNDICATE

602

3 of 3

GEOPHYSICAL & GEOLOGICAL REPORT ON ACE NO. 6 FRACTIONAL CLAIM

by J. M. Black

TABLE OF CONTENTS

Introduction	602	Page 1
Geology		" 1
Interpretation		" 1
Employment		" 2
Map: To accompany geophysical and geological report by J. M. Black, P.Eng. on the Ace No.6 fractional claim, Quatse Lake, Nanaimo Mining Division, November 24, 1964		" 3

Map 1

Department of
Mines and Petroleum Resources
ASSESSMENT REPORT
NO. 602 MAP

924/12E

GEOPHYSICAL & GEOLOGICAL REPORT ON ACE NO. 6 FRACTIONAL CLAIM

INTRODUCTION

This fraction is at the outlet of Quatse Lake. It comprises low ground, much of which is swampy. The better drained parts of the fraction were logged off some years ago and now are covered with a dense growth of salal, etc.

An overgrown logging road that crosses the fraction and the eastern part of the fraction were traversed. Also, one traverse was made across the northern tip of the fraction. These traverses were made by pace and compass. The traverses away from the logging road are shown on the accompanying map.

Two instruments were used. A Sharpe ~~xxxxx~~ PMF-3 was used for the traverse in the east central part of the fraction, alongside which, readings are in gammas. For the remainder of the traverses, a Sharpe DIM tripod-mounted magnetometer was used. The readings of this instrument are in degrees of swing. This instrument's readings have been correlated with the readings of the PMF-3 so that the degrees could be transposed to gammas in order to draw isomagnetic lines.

GEOLOGY

Most of the fraction is covered with an unknown thickness of fluvio and fluvio-glacial deposits. One outcrop was found a few feet southwest of the initial post. It is massive grey limestone.

INTERPRETATION

The magnetic readings are relatively low. They are higher in the eastern part of the fraction and the highest reading (almost 1,400 gammas) is at the initial post of the fraction. The isomagnetic lines are almost parallel to the length of the fraction and the magnetic ~~gradient~~ increases northe~~s~~stward. This fraction appears to be

intensity

on the margin of an anomaly that is somewhere to the northeast.

EMPLOYMENT

All field and office work was done by J. M. Black, P.Eng. Geological. One and a half days were spent on field work on July 25th and July 31st and August 4th, 1964. One and a half days were spent, assembling data and preparing report - a total of three days. No qualified geophysical operators were available in the area for short jobs.

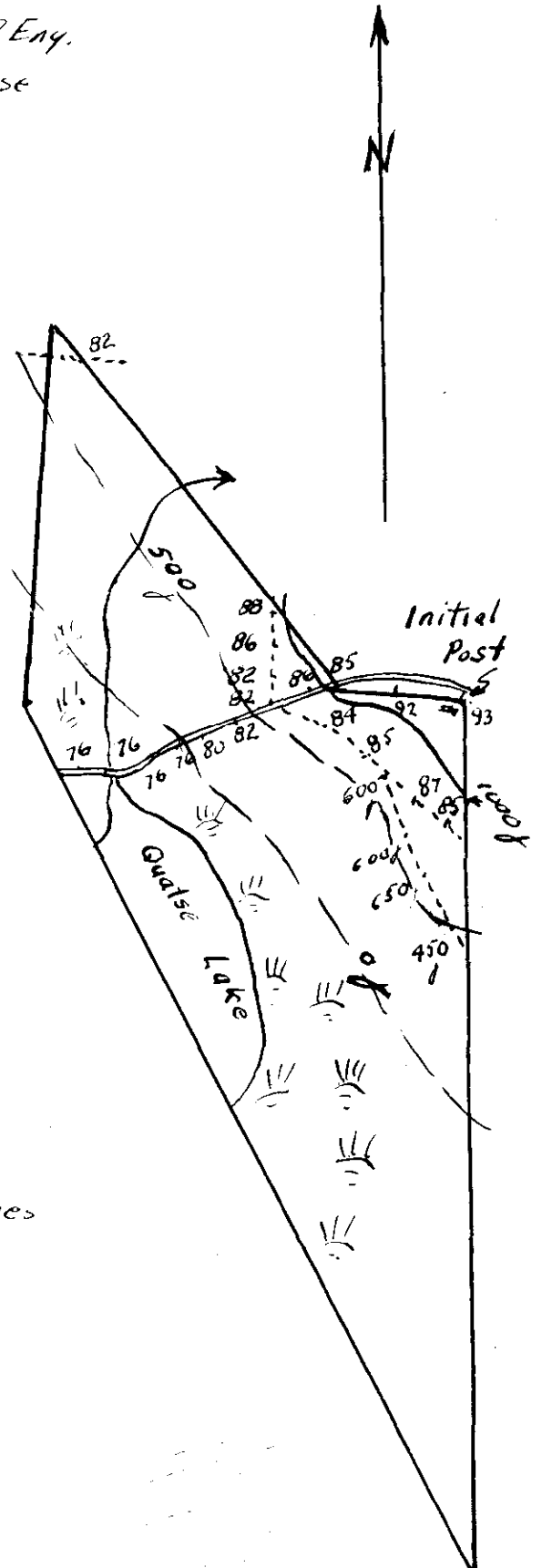
J. M. Black

To accompany geophysical and geological report by J.M. BLACK PENY. on the A.C. #6 Fractional claim Quatse Lake, Nanaimo M.D. Nov 27, 1964.

Department of
Mines and Petroleum Resources
ASSESSMENT REPORT
NO. 602 MAP 1

LEGEND

known 500 assumed isomagnetic lines
 450 readings in gammas
 88 readings in degrees
 ----- traverses limestone
 1" = 300 feet



J.M. Black

DOMINION OF CANADA:
PROVINCE OF BRITISH COLUMBIA.

In the Matter of

To WIT:

SUB-MINING RECORDER
RECEIVED
(89) Nov. 20 1964
M.R. # 7248 DS 5⁰⁰
VANCOUVER, B.C.

I, James M Black

of 659 Lakeshore Dr. New Westminster

in the Province of British Columbia, do solemnly declare that

I did work
on the Acc # 6 Fractional Mineral Claim
in Nanaimo B.C. for 3 days at a
rate of \$60.00 per day, for a total
of \$180.00

And I make this solemn declaration conscientiously believing it to be true, and knowing that it is of the same force and effect as if made under oath and by virtue of the "Canada Evidence Act."

Declared before me at the City
of Vancouver, in the
Province of British Columbia, this 26
day of November, 1964, A.D.

J. M. Black

Shirley Jeanette
A Commissioner for taking Affidavits within British Columbia or
A Notary Public in and for the Province of British Columbia.

Sub-Mining Recorder