

613

GEOMAG GEOPHYSICAL REPORT
of the
COPPER CANYON PROPERTY, MERRITT, B. C.
North 54° 121° West
for 92I/3E
HURLEY RIVER MINES LTD.

D. L. HINGS, P. ENG. SEPT. - OCT., 1964

Electronic Geophysical Surveys Limited,
250 North Grosvenor Street,
North Burnaby 2, B. C.

Telephone: 298-9619

GEOPHYSICAL REPORT

HURLEY RIVER

TABLE OF CONTENTS

	<u>Page</u>
Survey Extent	1
General Interpretation.	1
Summary	2
Survey Statistics	3
Plans:	
113-107-5 - Resistive Contours	
113-107-6 - Surface Contours	
113-107-7 - D. I. V. Vectors	

November 17th, 1964

This is a Geomag Geophysical Report No. 113-107, of the Copper Canyon Property, Merritt, B. C. conducted for the Hurley River Mines Limited, November, 1964.

This Report 113 is an extension and continuation of Report 107 of the Geomag Survey made in September, 1964. This Survey has extended the previous surveys to the West, the South, the East, and Northeast covering nearly three times the previous area surveyed in September.

The Resistive Contours of Drawing 113-107-5 may be related to the previous Survey Contour Plan 107-3 wherein the anomalies A-1, A-2 and A-3 are shown in the same relation. The anomaly A-4 of 107-3 has been greatly reduced with the additional control of the Stations East of Station 9.

The new Survey of November indicates a prominent structural anomaly extending down the East side of Copper Canyon Creek Valley and appears to cross the Creek between Stations 87 and 113. It is believed the strike L-1 continues between Station 112 and Station 13 although there are insufficient stations to support the distance. The anomalous linear strike appears to continue through Stations 31, 25, 47 and 59 as indicated by the dashed line, Linear Anomaly L-1. The L-1 strike follows closely to the high resistive side of the anomalous zone throughout. The low resistance side includes A-1, A-3, B-1 and B-3 with the hanging wall strike shown as L-2.

- 2 -

The surface topography may be seen by the Contour Drawing 113-107-2 with the Linear Anomalies L-1 and L-2. It would appear that the slopes of the valley support a Southerly dipping formation, to thereby create a strike equal to L-1. It would appear that the level strike of the formation, if taken between Stations 127 and Station 13, would conform to a dipping formation to the South, and approximately 25° East. The areal anomalies indicate the hanging wall L-2 on the South, and East sides, with the inner side representing the foot wall L-1.

The Vector Plan 113-107-7 indicates the relative strength perpendicular to the direction of strike throughout the anomaly. It may be noted that there is a strong linear structural feature in the Southeast L-3 that would require more survey lines to enable interpretation.

SUMMARY

It would appear that the expansion of this survey over the September Survey has been well warranted and that a prominent geological anomalous formation has now been disclosed in sufficient detail, to be localized for geological examination and investigation.

ELECTRONIC GEOPHYSICAL SURVEYS LIMITED


D. L. Hings, P. Eng.

DLH/j

SURVEY STATISTICS

The type of instrumentation used on this Survey was the Geomag Theodolite Magnetic Component Vectoring System.

This is an extension of the Geomag Survey made in September, 1964 and consists of 12,175' of line surveyed. A total of 127 setups readings were made over 103 Stations.

The work distribution included -

2 man days travelling

5 man days surveying

21 man days cutting and staking line

2 man days field office

TOTAL: 30 man days field

9½ man days preparation of report, interpretation and plans

TOTAL: 39½ man days

613

92I/3E

Geomag Geophysical Report #107
on the
Hurley River Copper Creek Property
in the
Ashcroft Mining Area, B. C.

Electronic Geophysical Surveys Limited,
250 North Grosvenor Avenue,
Vancouver, B. C.

Telephone: 298-9619

August 18th, 1964.

ELECTRONIC GEOPHYSICAL SURVEYS LIMITED

August 18th, 1964.

Geomag Geophysical Report #107 on the
Hurley River Copper Creek Property
in the Ashcroft Mining Area, B. C.

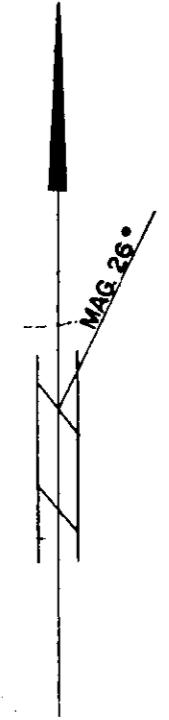
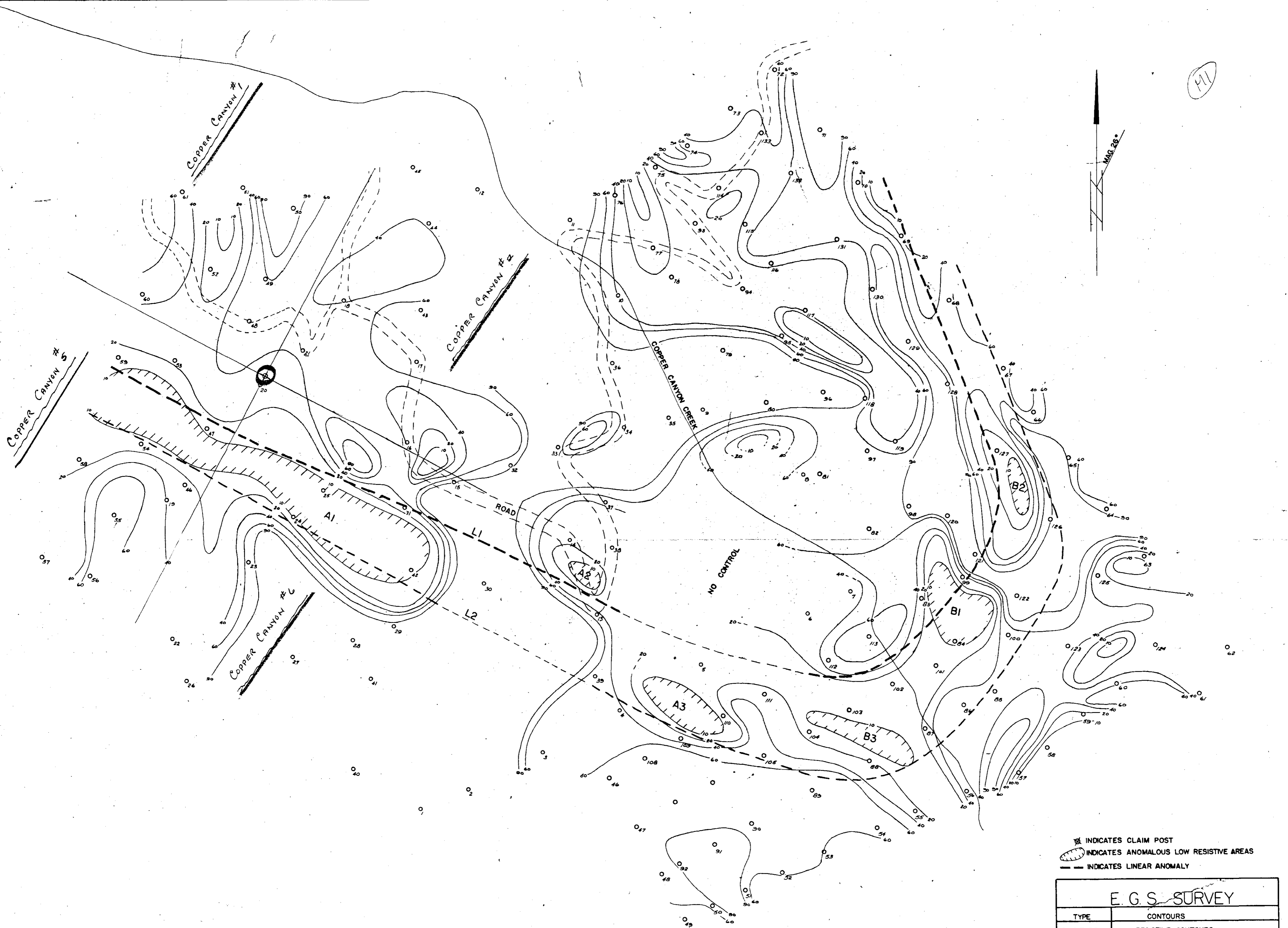
The survey party inspected the area with Al Swan on July 30th, 1964, and found that suitable lines had not been established. Line clearing and the survey were completed on August 4th, which included 30 stations and 34 set-ups totalling as shown on plan 107-1 and topographical contour plan 107-2. The work on this property was hampered by the heavy brush growth and steep slope making it difficult to clear and stake the lines. The broadly spaced set-ups were made for a reconnaissance survey.

The resistive contours shown on 107-1 vary from 10 to 90. The readings within the 10 contours are of primary interest, especially when accompanied with relatively high boundary readings. The contouring as shown has too few control stations, and therefore cannot be considered as an indication of the true shape of the anomaly. However, within 200 feet of the stations within the anomalous area, signified by the hatched marks, there appears to be sufficient geological change to warrant further investigation. It is recommended that further work be done on this property in geophysical or geological form prior to considering a drilling program.

ELECTRONIC GEOPHYSICAL SURVEYS LIMITED


D. L. Hings, P. Eng.
Geophysicist.

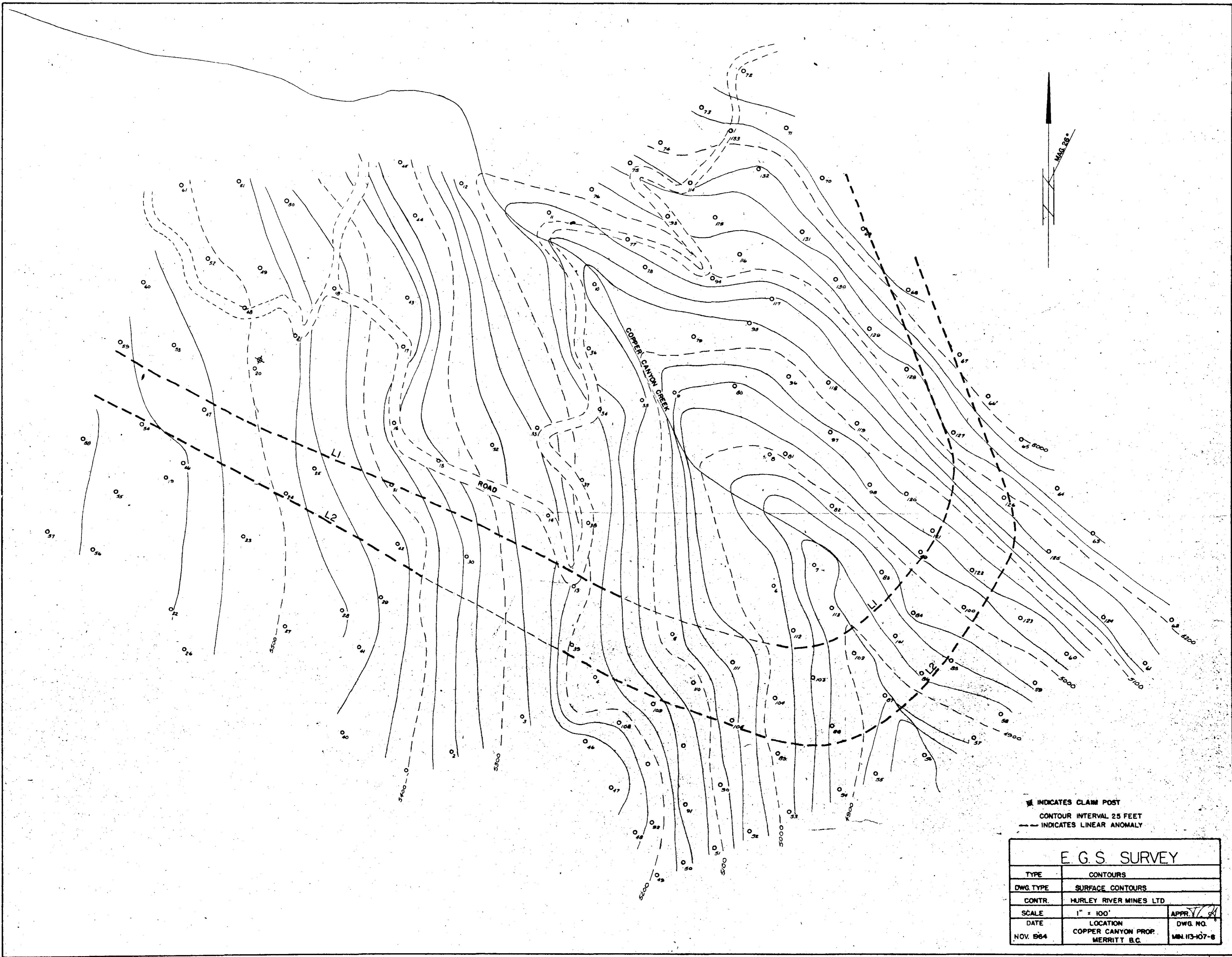
M1



- ⊗ INDICATES CLAIM POST
- ⊕ INDICATES ANOMALOUS LOW RESISTIVE AREAS
- INDICATES LINEAR ANOMALY

E. G. S. SURVEY		
TYPE	CONTOURS	
DWG. TYPE	RESISTIVE CONTOURS	
CONTR.	HURLEY RIVER MINES LTD	
SCALE	1" = 100'	APPR. <i>Y</i>
DATE	LOCATION	DWG. NO.
NOV. 1964	COPPER CANYON PROP. MERRITT B.C.	MIN. 113-107-5

613

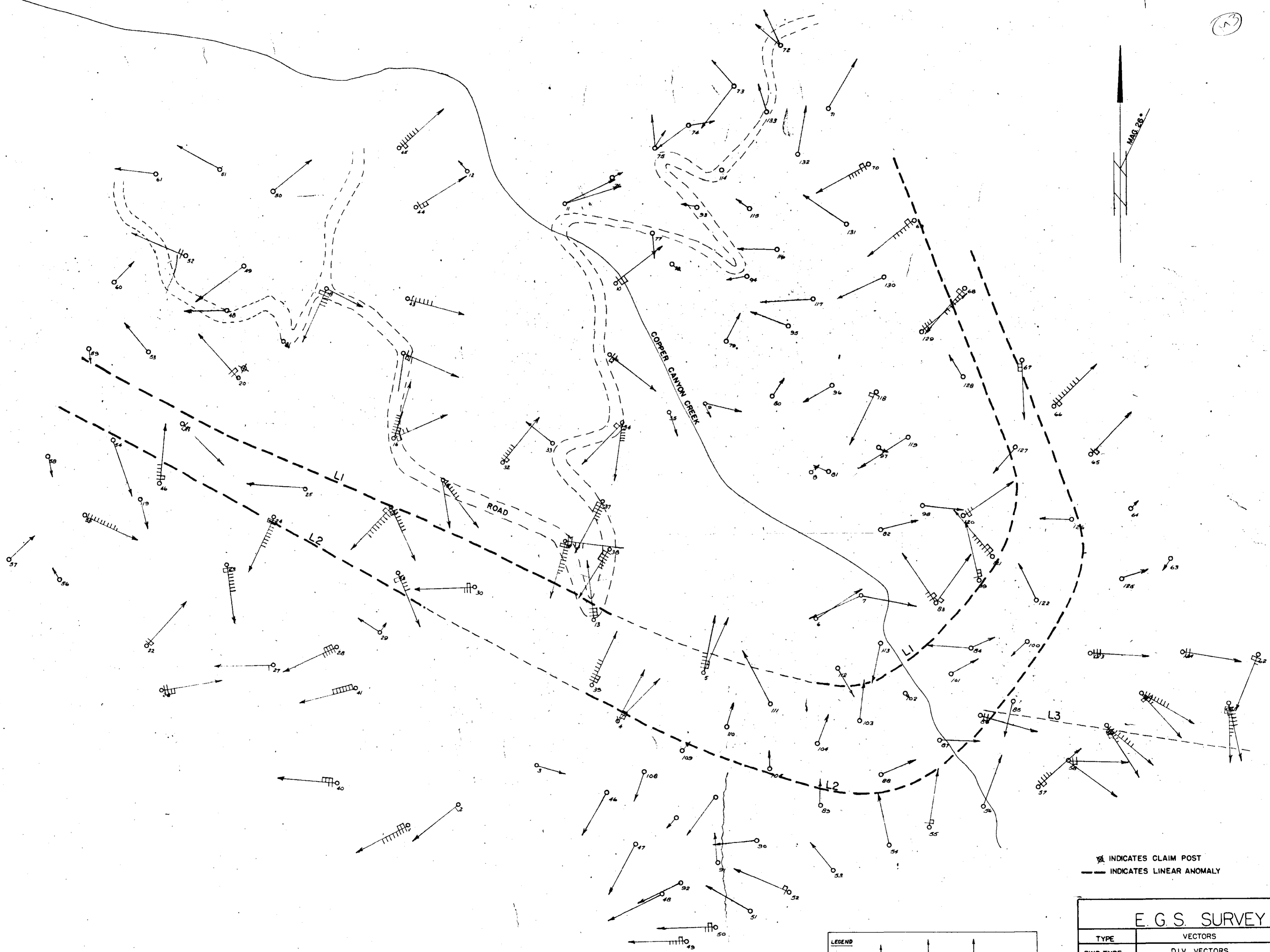
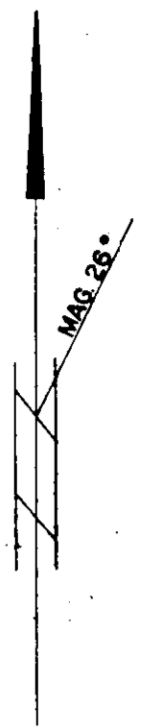


○ INDICATES CLAIM POST
 --- CONTOUR INTERVAL 25 FEET
 - - - INDICATES LINEAR ANOMALY

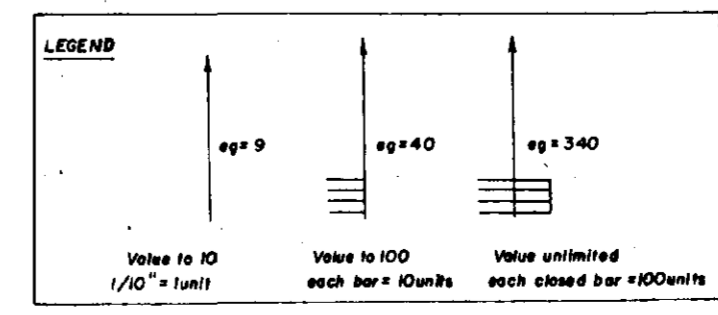
E. G. S. SURVEY		
TYPE	CONTOURS	
DWG. TYPE	SURFACE CONTOURS	
CONTR.	HURLEY RIVER MINES LTD	
SCALE	1" = 100'	APPR. <i>[Signature]</i>
DATE	LOCATION	DWG. NO.
NOV. 1964	COPPER CANYON PROP. MERRITT B.C.	MIN. 113-107-8

613

73



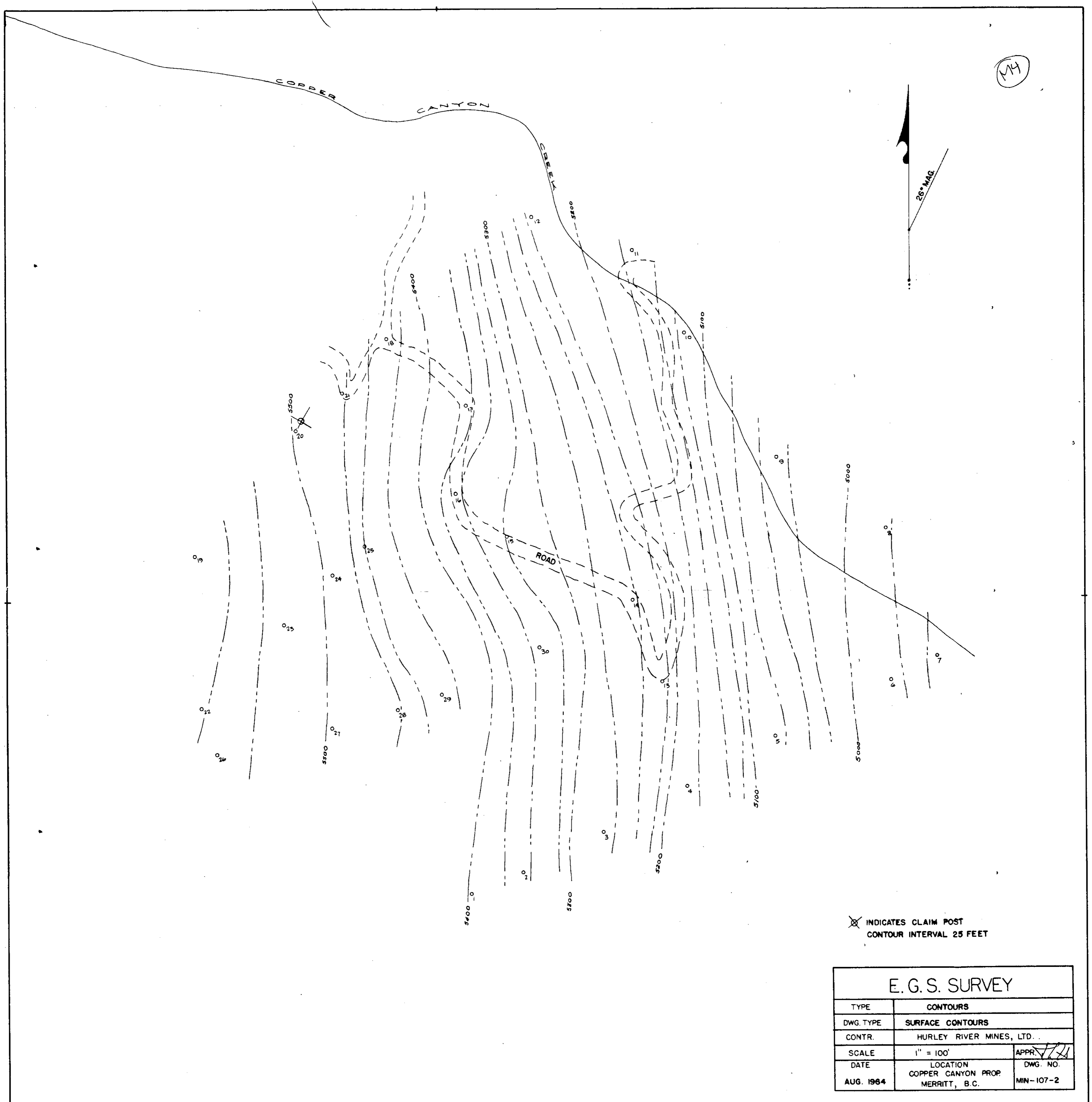
⊠ INDICATES CLAIM POST
--- INDICATES LINEAR ANOMALY



E. G. S. SURVEY		
TYPE	VECTORS	
DWG. TYPE	D.I.V. VECTORS	
CONTR.	HURLEY RIVER MINES LTD	
SCALE	1" = 100'	APPR.
DATE	LOCATION	DWG. NO.
NOV, 1964	COPPER CANYON PROP. MERRITT B.C.	MIN.113-107-7

613

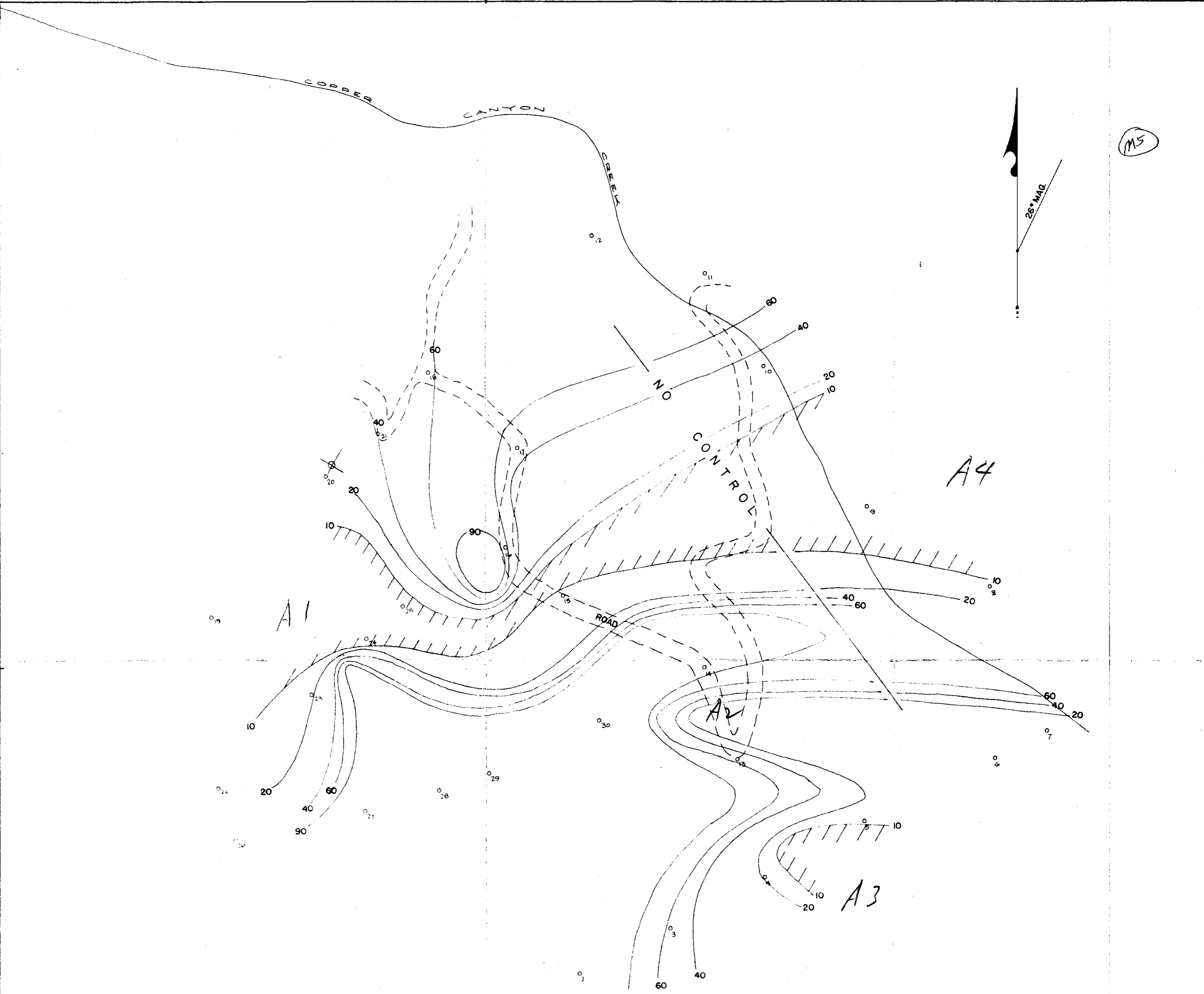
(114)



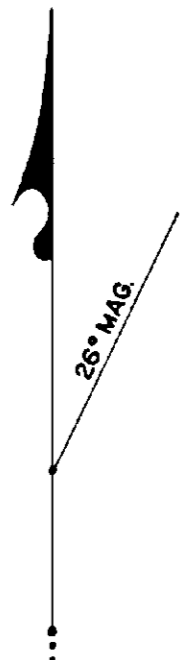
⊗ INDICATES CLAIM POST
 CONTOUR INTERVAL 25 FEET

E. G. S. SURVEY		
TYPE	CONTOURS	
DWG. TYPE	SURFACE CONTOURS	
CONTR.	HURLEY RIVER MINES, LTD.	
SCALE	1" = 100'	APPR. <i>[Signature]</i>
DATE	LOCATION	DWG. NO.
AUG. 1964	COPPER CANYON PROP MERRITT, B.C.	MIN-107-2

613



(MS)



A4

A1

A2

A3

⊗ INDICATES CLAIM POST
 HATCHING INDICATES ANOMALOUS LOW RESISTIVE AREAS

E. G. S. SURVEY		
TYPE	CONTOURS	
DWG. TYPE	RESISTIVE CONTOURS	
CONTR.	HURLEY RIVER MINES, LTD.	
SCALE	1" = 100'	APPR. <i>[Signature]</i>
DATE	LOCATION	DWG. NO.
AUG-14 1964	COPPER CANYON PROP. MERRITT, B.C.	MIN-107-1

613