

634

GEOPHYSICAL REPORT ON
RAINBOW GROUP OF CLAIMS
FOR
WESTERN BEAVER LODGE MINES LIMITED

Claims Surveyed:

Rainbow 1 to 20 inclusive

Rainbow 22 and 23

Lone Tree Grant Lot 883

D. Fraction

A. Fraction

Rob 3

which are located 7 miles southwest of Kamloops, 50°30', 120°SE

The survey was conducted during the period February 22 to
March 11, 1965.

The report is written by E. B. Nicholls, P.Eng., Geophysicist.

SULMAC EXPLORATION SERVICES LIMITED

MARCH 29, 1965

I N D E X

	<u>Page</u>
Introduction	1
Summary & Recommendations	1
Property, Location and Access	2
General Geology	3
Method of Survey	4
Discussion of Results	5

Appendix: List of Personnel Employed on Geophysical Survey

In Pocket: Claim Map at scale 1" = 400'

Map 1

Map of Magnetometer Survey at scale 1" = 400' *Map 2*

Department of Mines and Petroleum Resources ASSESSMENT REPORT	
NO. <i>634</i>	MAP.....

**GEOPHYSICAL REPORT
ON RAINBOW CLAIMS
FOR
WESTERN BEAVER LODGE MINES LIMITED**

**KAMLOOPS MINING DISTRICT
KAMLOOPS
BRITISH COLUMBIA**

Introduction

A ground magnetometer survey was carried out over the Rainbow group of claims for Western Beaver Lodge Mines Limited, located in the Kamloops area of British Columbia.

The survey was conducted by Sulmac Exploration Services Limited during the period February 22 to March 11, 1965. The field work was carried out by Mr. R. Pild, geophysicist, and Mr. R. McLeod, operator.

Results of the survey are shown on the plan accompanying this report.

Summary and Recommendations

A magnetometer survey was carried out over the Rainbow group of claims for Western Beaver Lodge Mines Limited. The survey did not indicate any major anomalous zone. However,

on interpretation of the data obtained it is possible to indicate the contacts between the various rock types and two possible north-south faults.

The magnetics infer that the central portion of the claim group is underlain by the Iron Mask Batholith and that rocks of the Kamloops and Nicola Groups lie to the west and east respectively of this central band. These formations are known to be the host rocks for ore occurrences in the immediate area. All places in the intrusive are favourable, as are shears in the volcanics near the contact with the intrusive.

It is, therefore, recommended that the claim group be surveyed by the Induced Polarization method in order to locate any mineralized zone that may be present. Any anomalies indicated by the I.P. survey should be further investigated by diamond drilling.

Property, Location and Access

The property of Western Beaver Lodge Mines Limited consists of a group of some 55 claims, however only one portion of these claims were covered by the present survey. These are shown on the accompanying map and are listed as follows:

Rainbow 1 to 20 Mineral Claims

Rainbow 22 and 23 Mineral Claims

Various Fractions D. Fraction

A. Fraction

Lone Tree Crown Grant Lot 883 and Rob 3

The property is located 10 miles by road southwest of Kamloops. Access to the claims is good, being by the main Trans-Canada Highway west from Kamloops for about 7 miles to the junction of the Lac Le Jeune road, and thence south for approximately 3 miles.

General Geology

This area is part of the Interior Plateau region and contains rocks ranging in age from Triassic to Recent. The general geology of the area is shown on Map No. 886A accompanying Memoir 249, Geology and Mineral Deposits of Nicola Map Area, British Columbia, by W. E. Cockfield, published by Department of Mines and Resources.

The property discussed in this report lies within the area underlain by the Iron Mask Batholith. This diorite complex, some 12 miles by 3 miles in area, strikes northwesterly and is found to be the main ore host. To the

north this batholith is bounded by volcanics and to the south by Nicola volcanics with some sediments. The batholith varies in composition from syenite to ultrabasic types, all of which are deficient in quartz, but magnetite and apatite are present in most rocks. This batholith has been subject to considerable movement and shows extensive fracturing. Shearing is found to be maximum in the area of major peridotite inclusions.

All points in the intrusive are favourable for ore occurrence. Showings have been found in the following claims in the immediate area: Iron Cap, Lucky Strike, Evening Star, Iron Mask.

The volcanics are also common hosts to ore filled shears which are not too far from the intrusive. There appears to be close association between copper deposits and certain veins of magnetite within the rocks of the batholith. However, this association of copper and magnetite is not general throughout the area.

Method of Survey

A magnetometer survey was carried out over the Rainbow Group of claims based on a grid system of 200 foot lines and 100 foot stations. The baseline of the grid was established

in a north-south direction and the traverse lines were turned off at right angles to this line. A total of 47 miles were cut and chained.

The survey was conducted using a Sharpe MF-1 Fluxgate magnetometer. Sensitivity of the instrument was 20 gammas per division on the 1000 gamma scale. A total of 47 miles were surveyed by this method. The results obtained were plotted on a map at a scale of 400 feet to the inch, and contoured. The map accompanies this report.

Discussion of Results

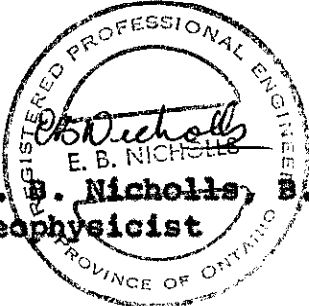
The magnetometer survey indicates considerable magnetic relief throughout the property, however no major anomalous zone was found. The central portion of the area surveyed showed numerous one and two reading magnetic 'highs', indicating that the magnetite concentration within the band is very erratic. Contacts between the various rock types have been inferred from the magnetics and are shown on the accompanying map. Two probable main faults are also shown on the map, however a number of minor faults indicated by the magnetics are not shown.

The central band of high magnetics probably indicates the presence of the Iron Mask Intrusive. To the west of this zone lies a zone of medium intensity magnetics, which is probably due to rocks of the Kamloops Group. The low magnetics on the eastern portion of the property is due to rocks of the Nicola Group.

The magnetics have, therefore, indicated that the claim group is located in a favourable geological environment, as the rocks underlying the property are known to be the host for ore occurrence in the immediate vicinity. Further exploration work in the form of an I.P. survey, followed by diamond drilling, should be undertaken.

Respectfully submitted,

SULMAC EXPLORATION SERVICES LIMITED

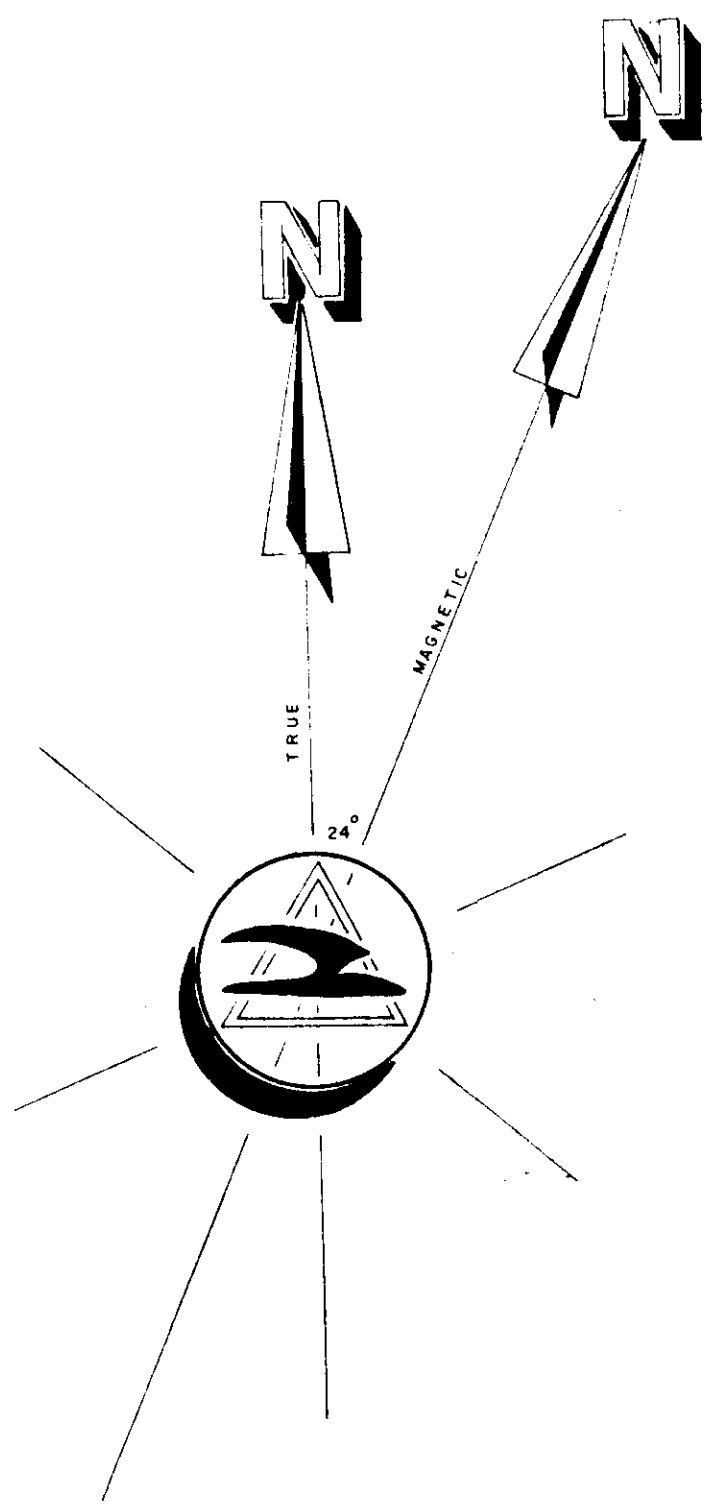

E. B. Nicholls, B.Sc., P.Eng.,
Geophysicist

March 29, 1965

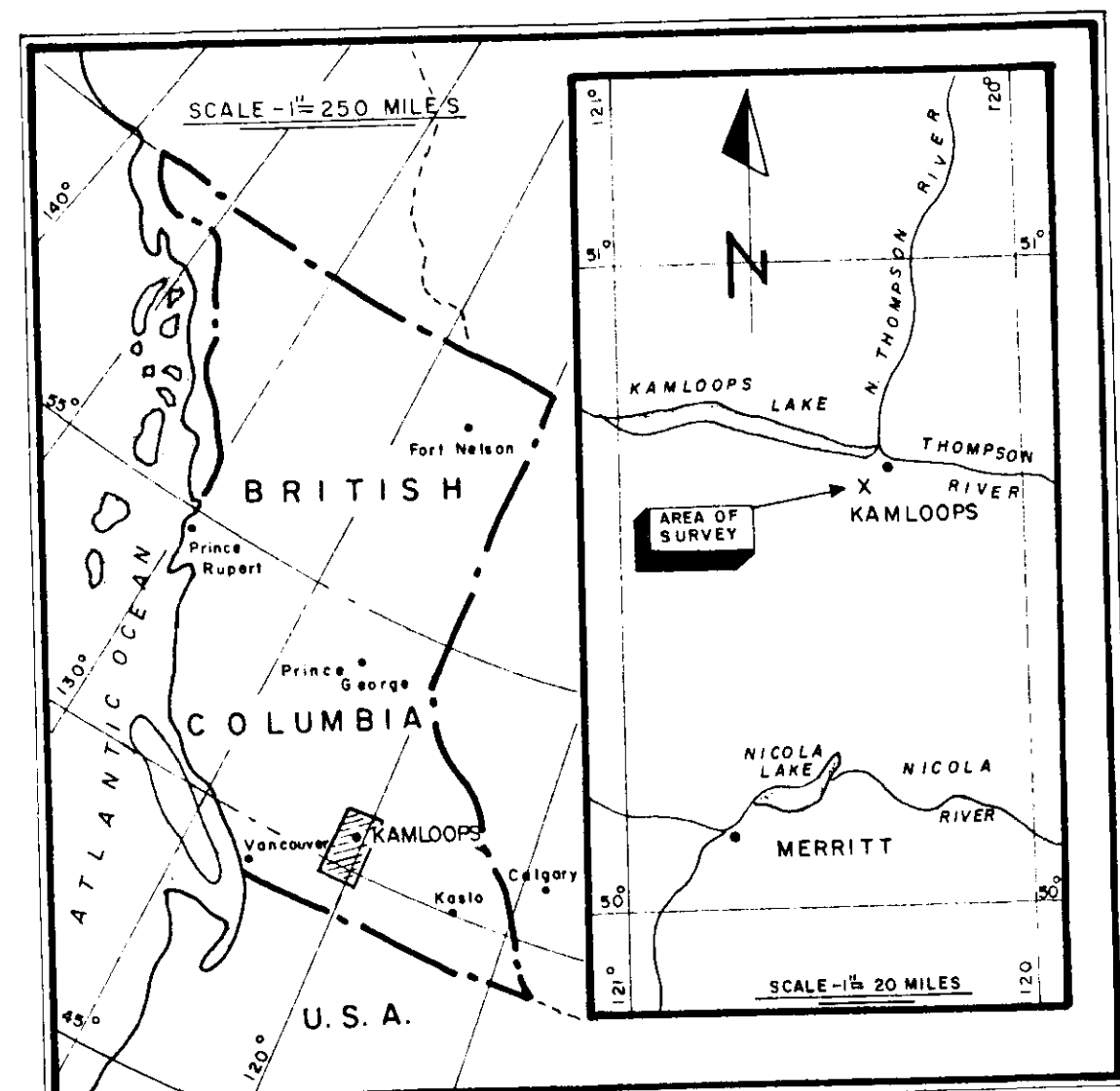
APPENDIX

List of Personnel Employed on Geophysical Survey:

E. B. Nicholls	Senior Geophysicist
R. Pild	Field Geophysicist
R. McLeod	Geophysical Operator
K. Schulte	Linecutter
G. Espaniel	"
R. Espaniel	"
P. Jones	"
T. Reid	"
E. Adams	"
N. Stewart	"



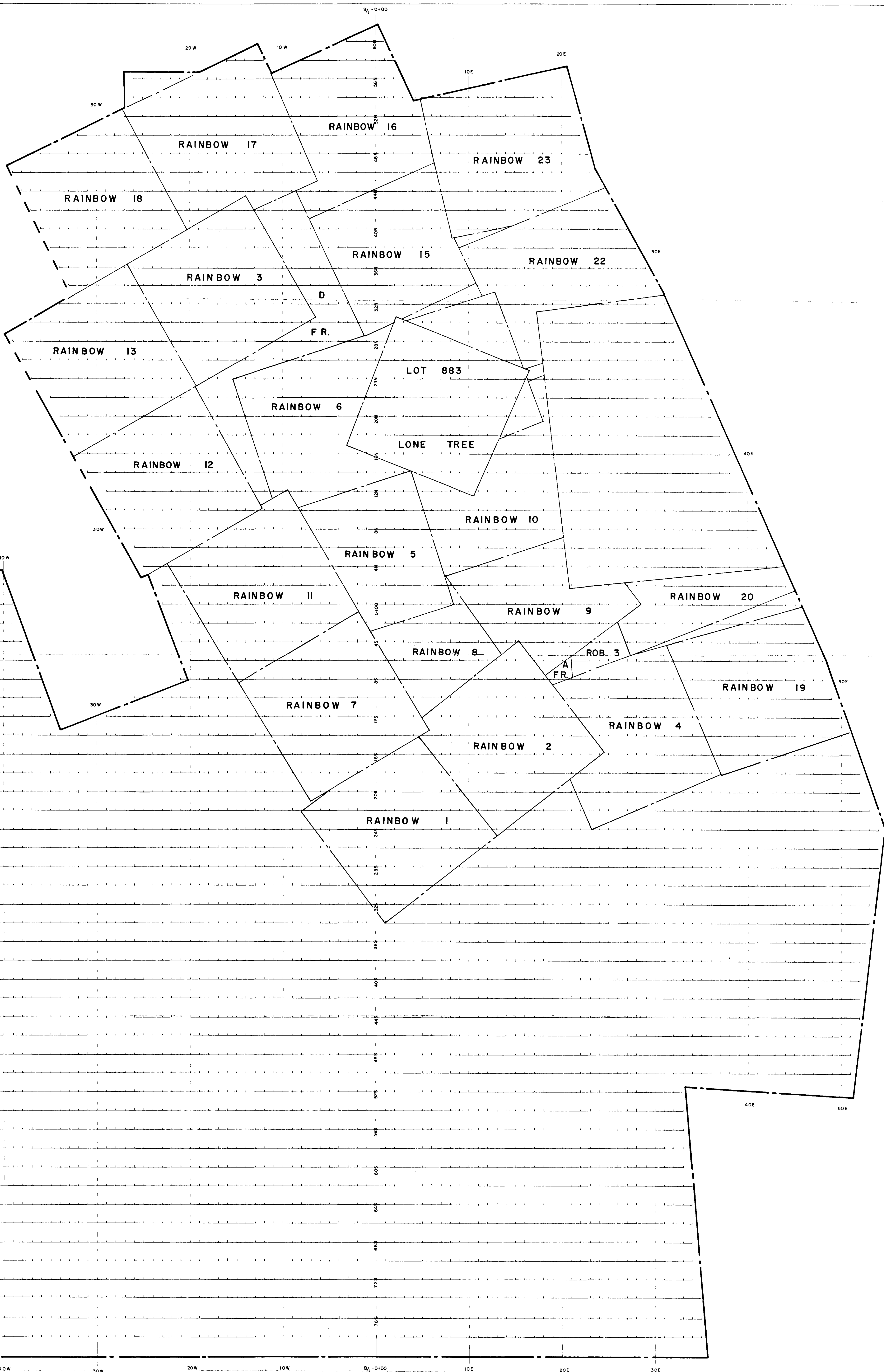
LOCATION MAP



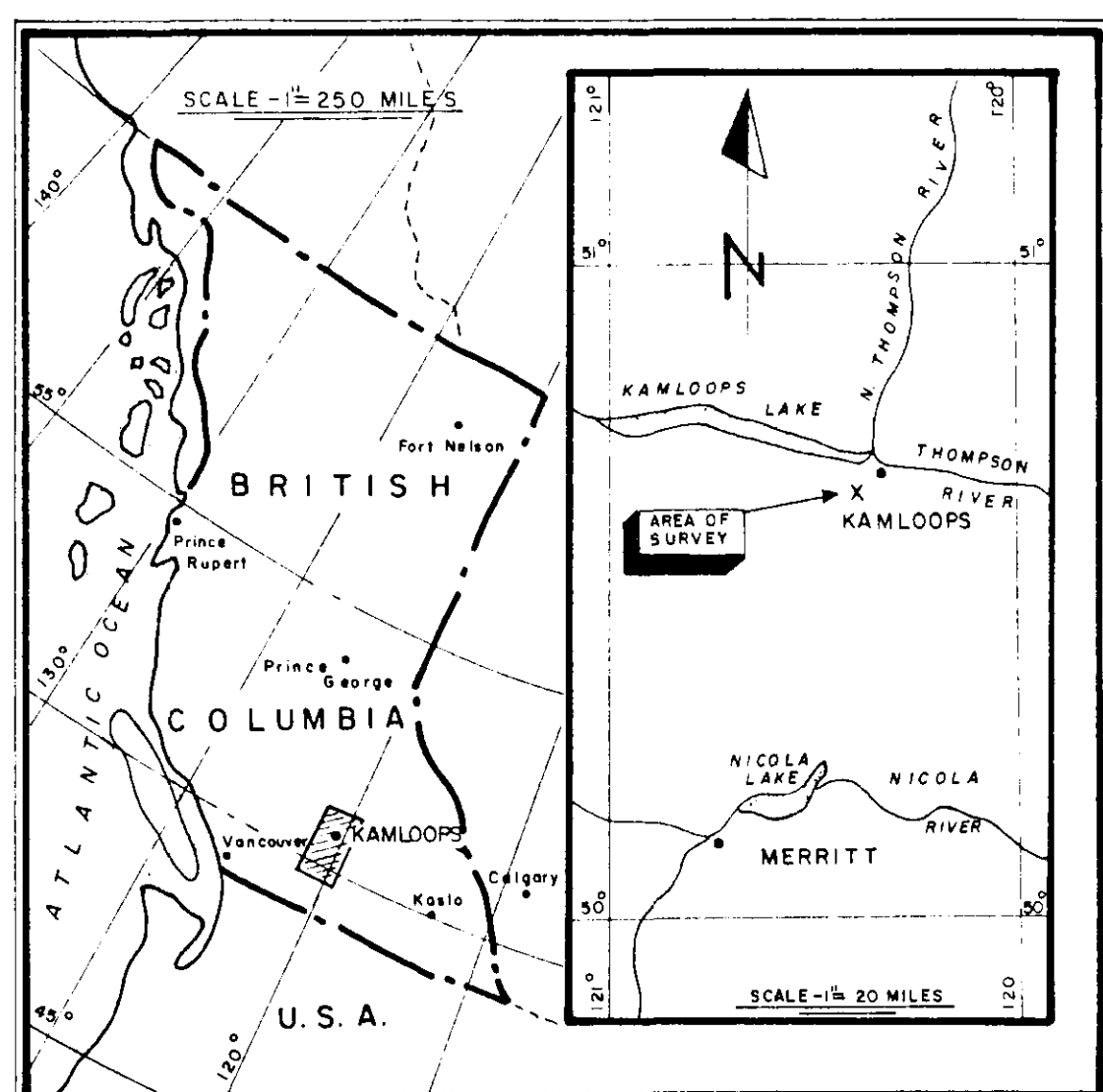
L E G E N D

CLAIM BOUNDARY OUTLINE ————
 CLAIM OUTLINE - - - - -

634



LOCATION MAP



L E G E N D

CLAIM BOUNDARY OUTLINE ————
 CLAIM OUTLINE - - - - -

**WESTERN BEAVER LODGE
 MINES LIMITED**

KAMLOOPS-BRITISH COLUMBIA
 KAMLOOPS MINING DIVISION

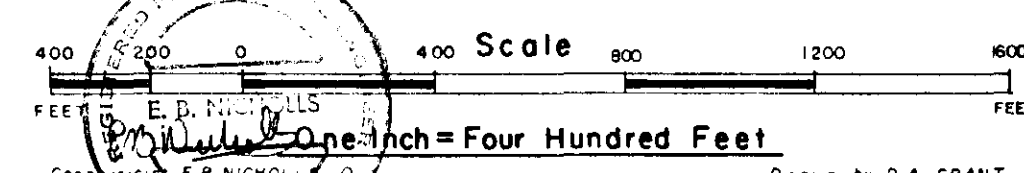
(RAINBOW CLAIM GROUP ONLY)

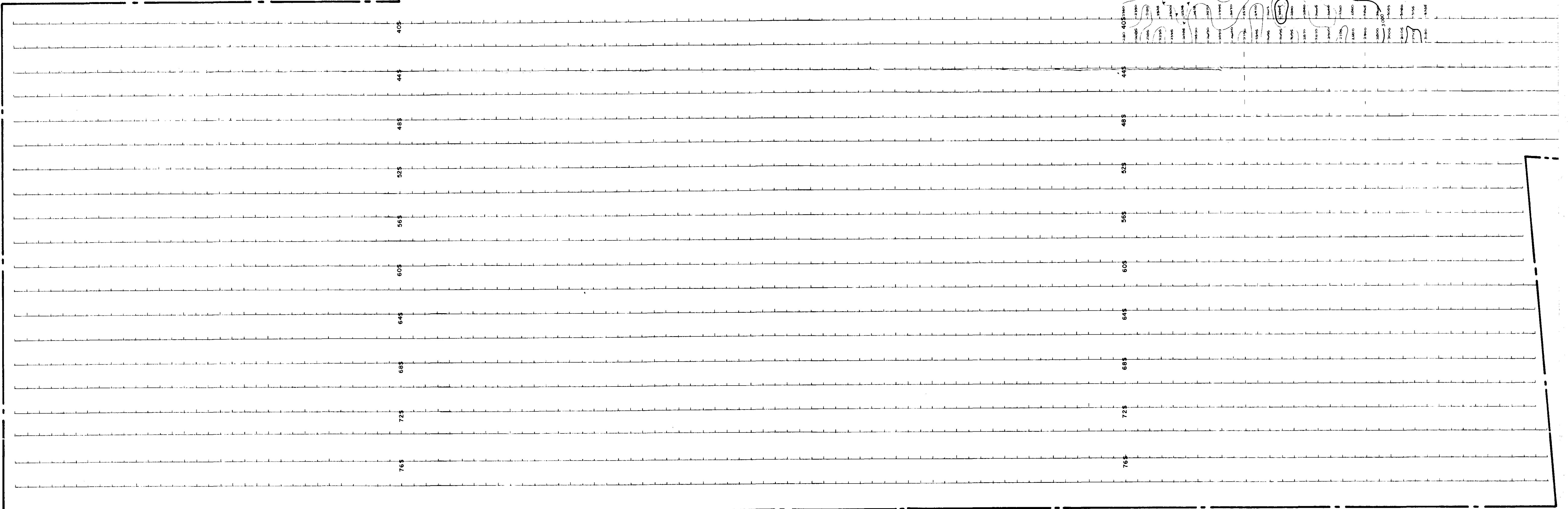
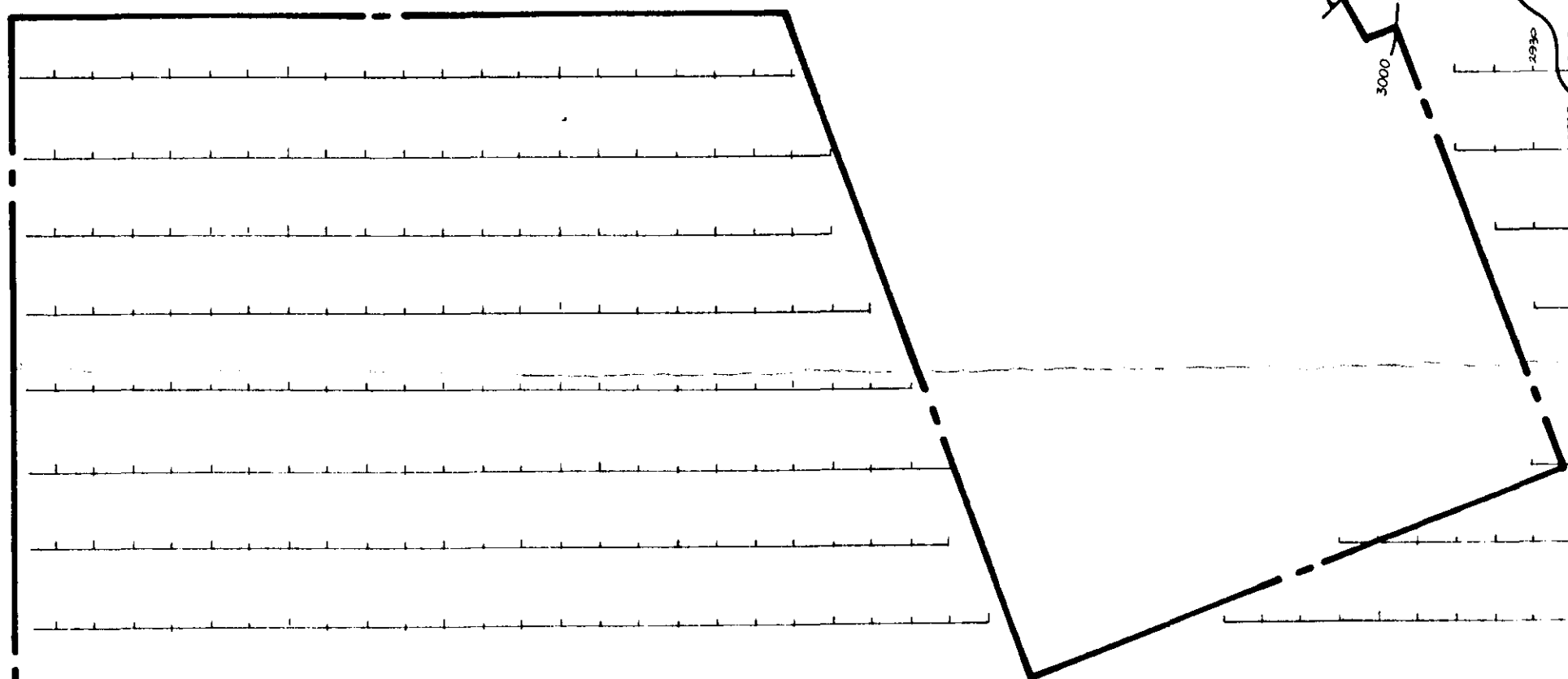
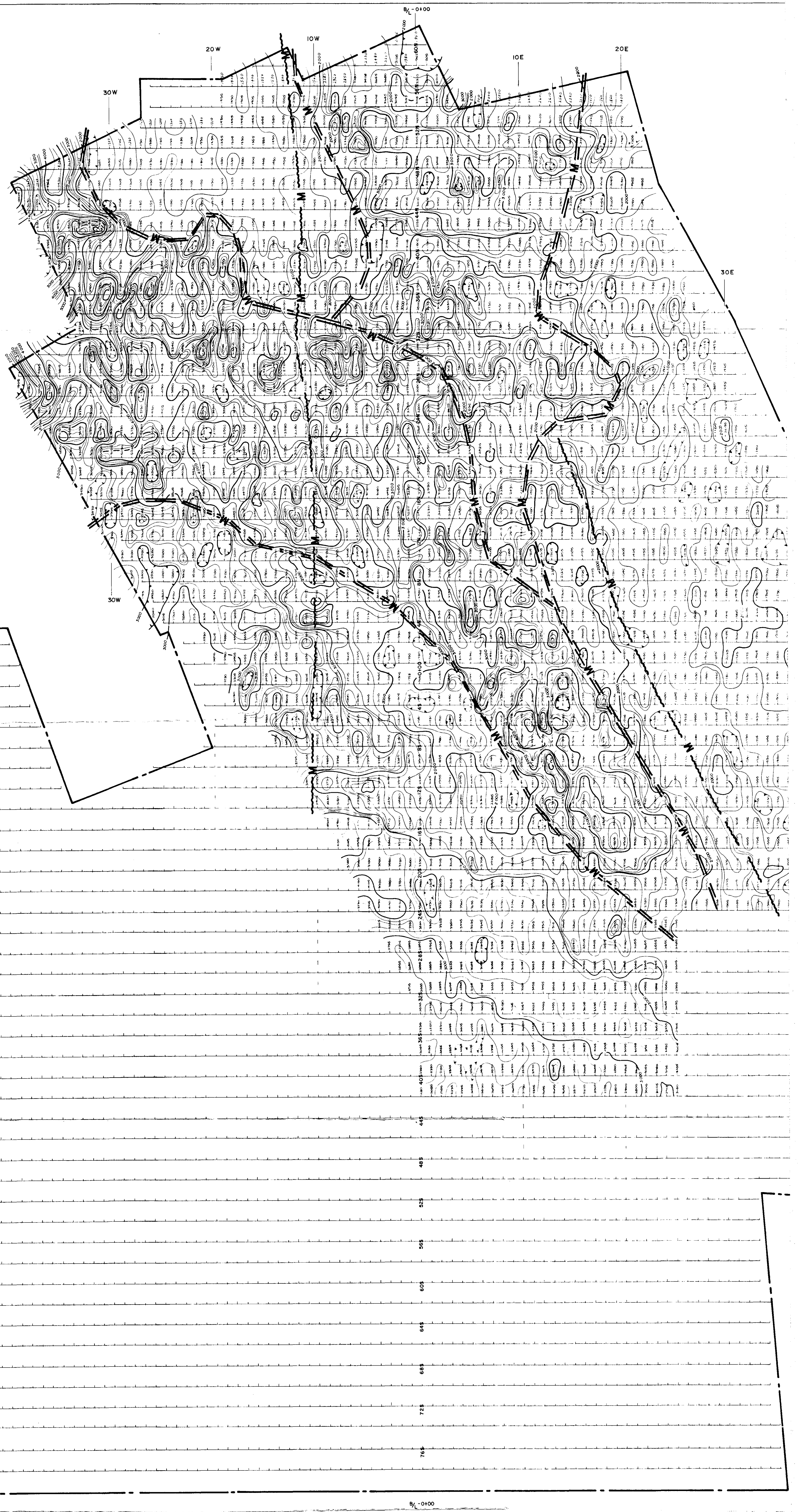
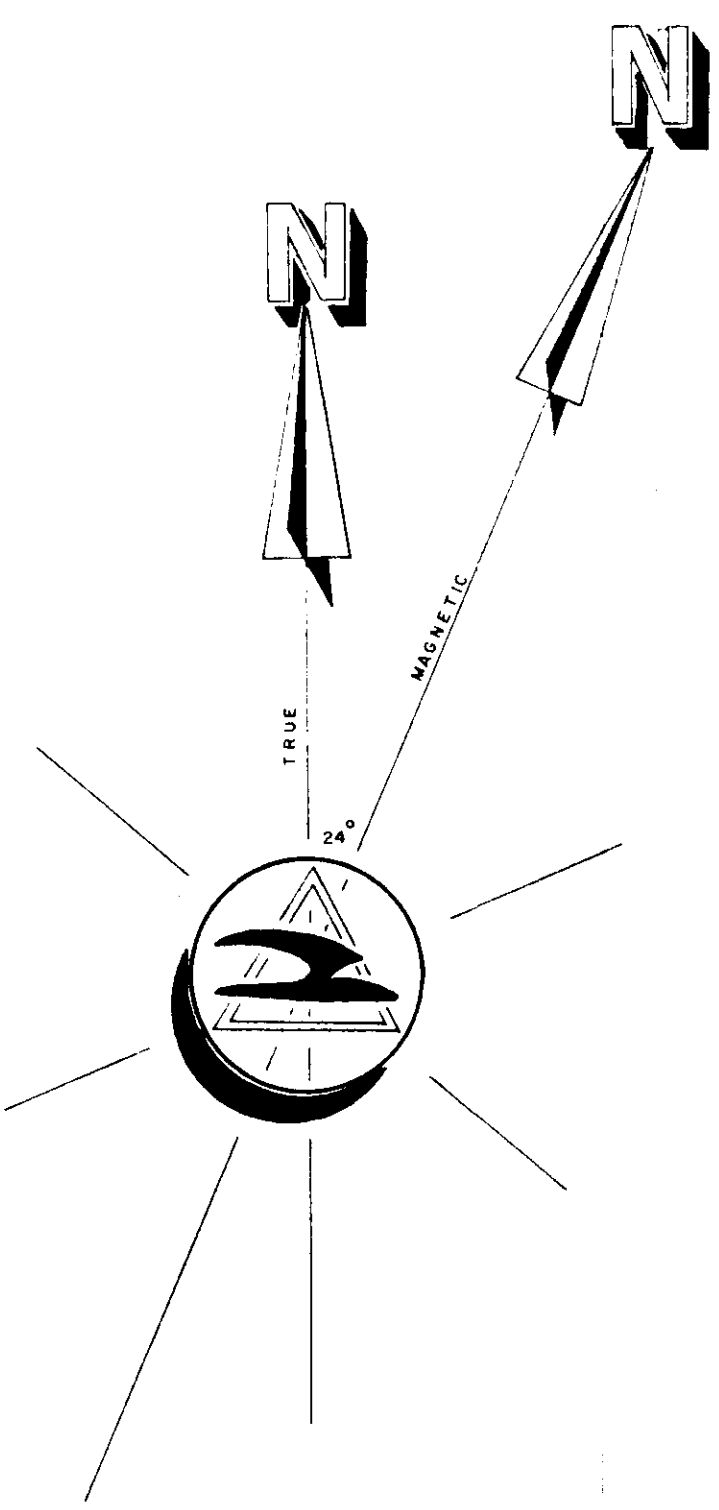
CLAIM MAP

Department of
 Mines and Petroleum Resources
 ASSESSMENT REPORT

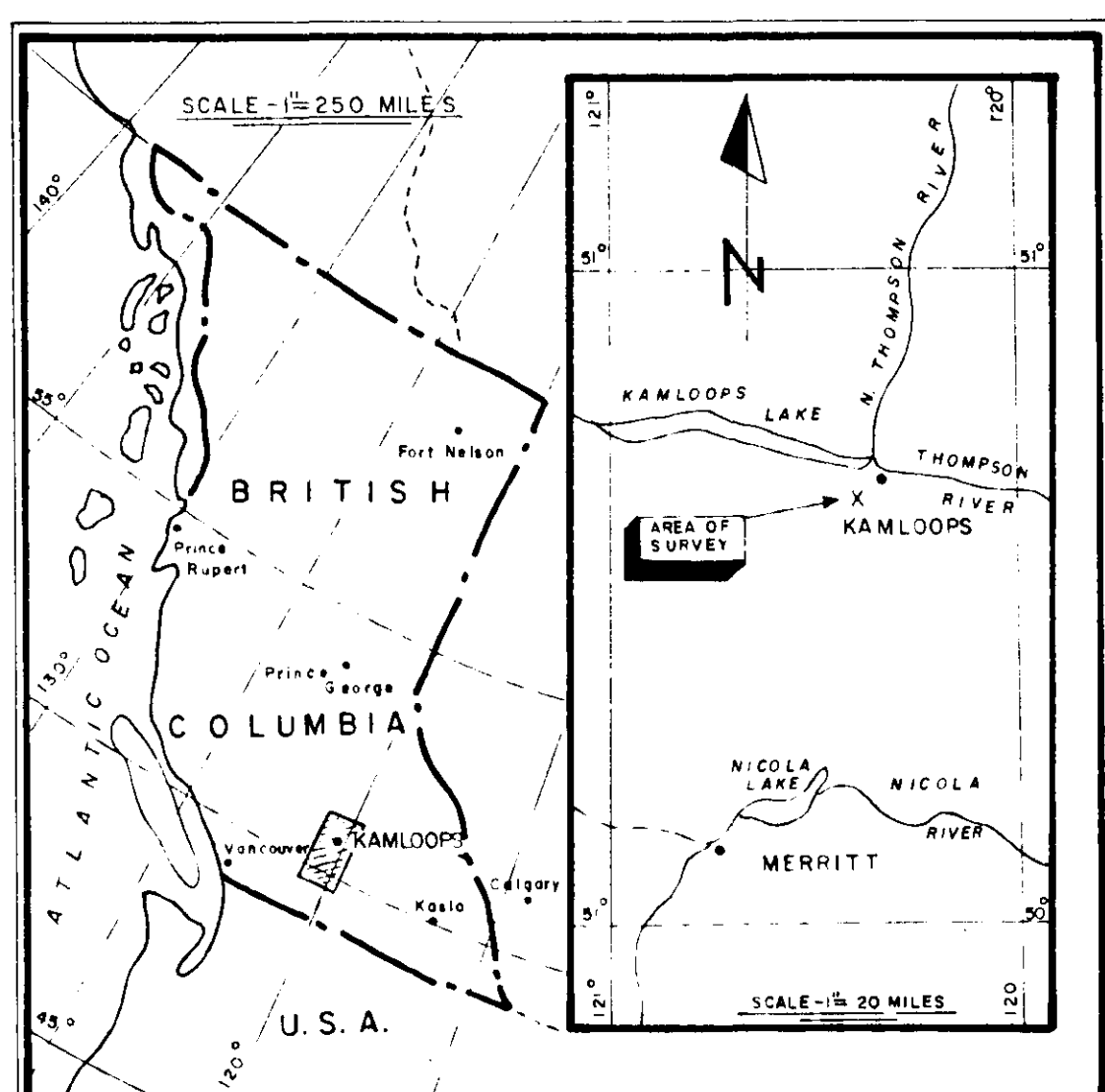
NO. 634 MAP 1
 SULMAC EXPLORATION SERVICES LIMITED
 MAR-APR - 1965

634





LOCATION MAP



LEGEND

MAGNETOMETER SURVEY

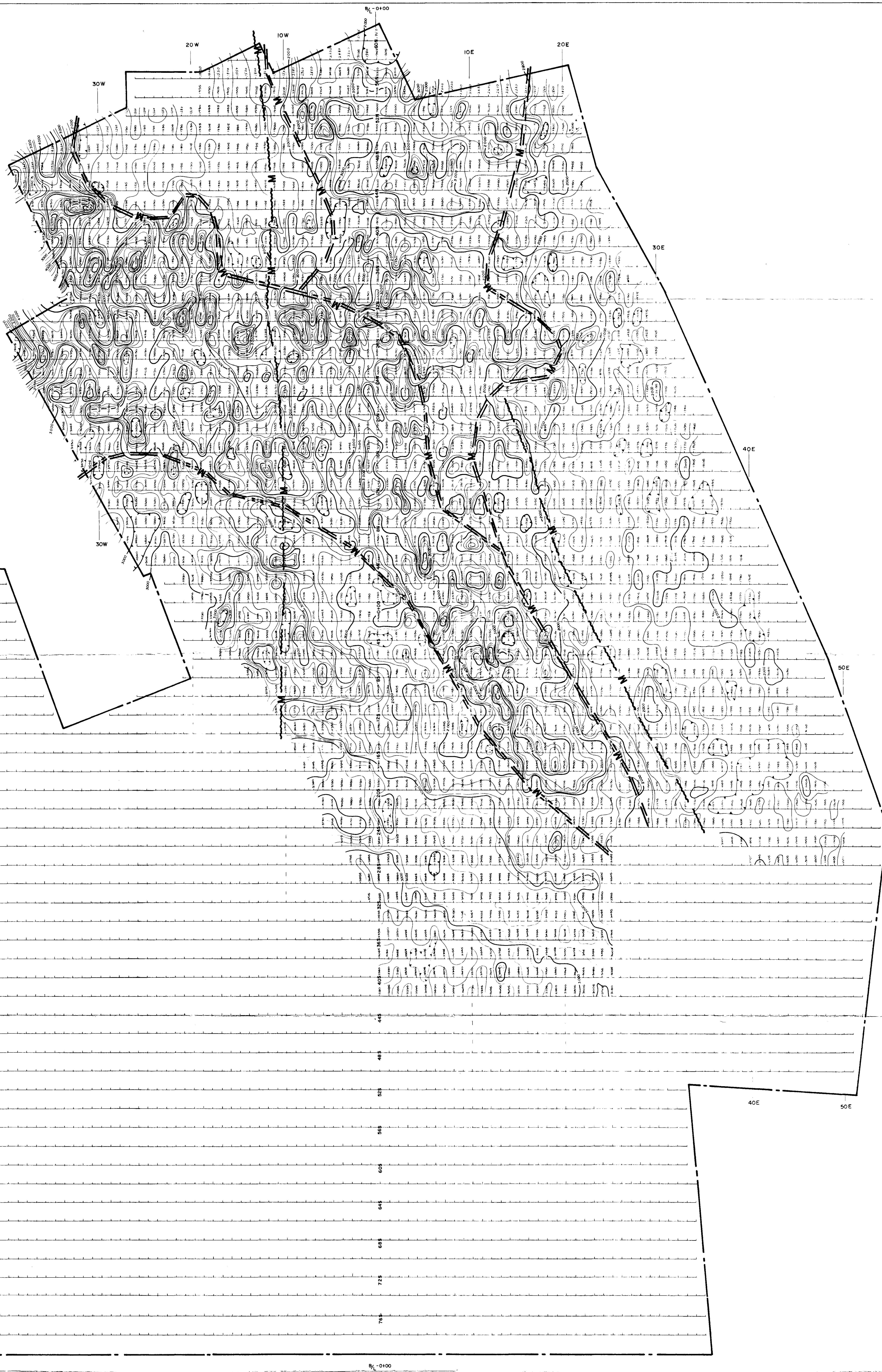
Contour Interval 250 Gammas

- 1000 Gamma Contour
- 250 Gamma Contour
- ⊖ Magnetic Depression

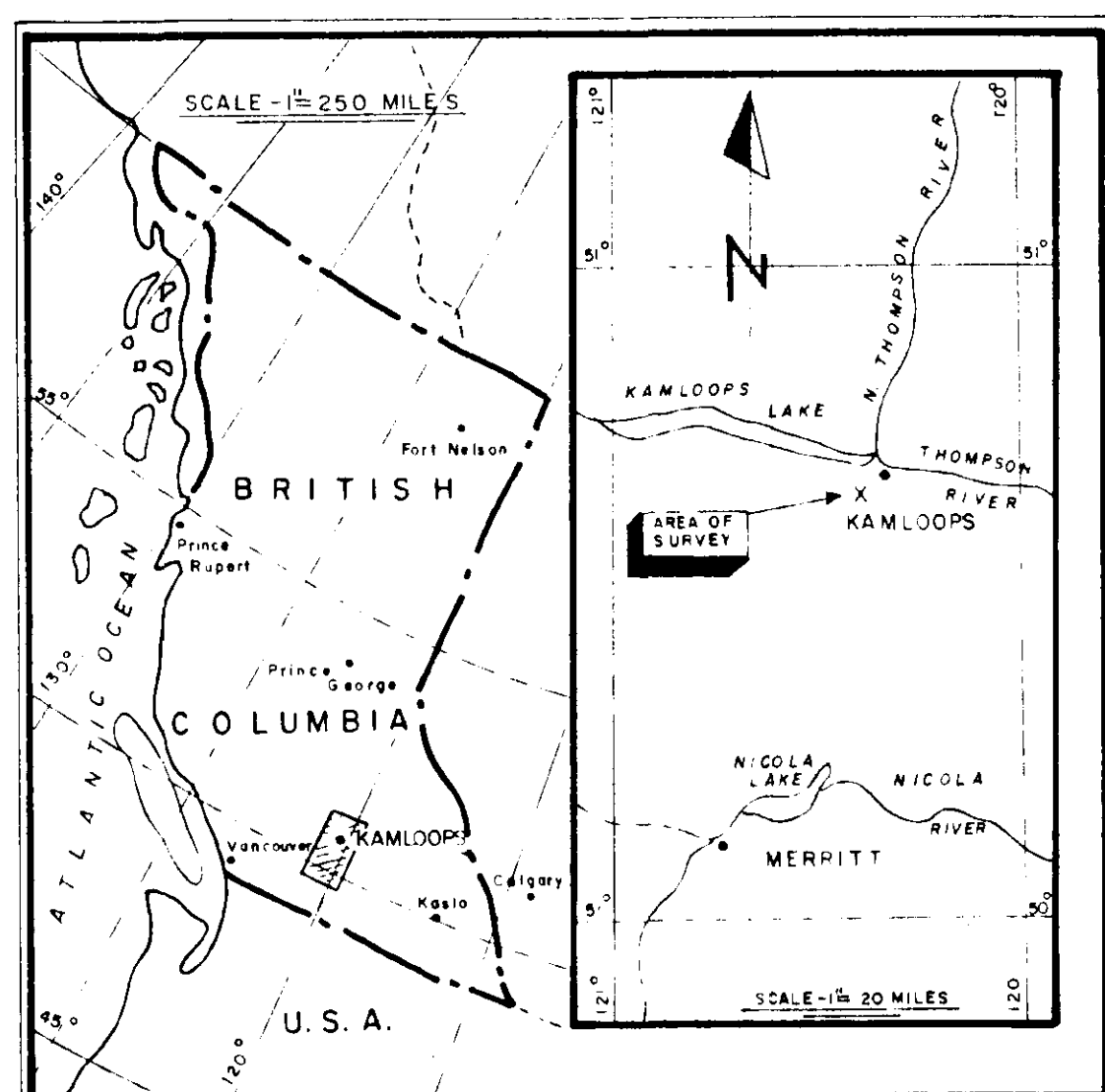
MAP SYMBOLS

- Claim Boundary ———
- Contact Inferred from Magnetics ——— M ———
- Fault Inferred from Magnetics ——— M ———

634



LOCATION MAP



L E G E N D

MAGNETOMETER SURVEY

Contour Interval 250 Gammas

- 1000 Gamma Contour
- 250 Gamma Contour
- ⊖ Magnetic Depression

MAP SYMBOLS

- Claim Boundary ————
- Contact Inferred from Magnetics ————
- Fault Inferred from Magnetics ————

**WESTERN BEAVER LODGE
MINES LIMITED**

KAMLOOPS-BRITISH COLUMBIA
KAMLOOPS MINING DIVISION

(RAINBOW CLAIM GROUP ONLY)

**MAGNETOMETER
SURVEY**

Department of
Mines and Petroleum Resources
ANNUAL REPORT

NO. 634 MAP 2

SULMAC EXPLORATION SERVICES LIMITED
MAR-APR - 1965

634

