

DONALD W. SMELLIE, P.ENG.
CONSULTING GEOPHYSICIST

1666 WEST BROADWAY
VANCOUVER 9, B.C.
REGENT 1-6584

659

GEOPHYSICAL REPORT

DAWN, B & R GROUPS

CONTENTS

	<u>Page</u>
SUMMARY -----	1.
RECOMMENDATIONS -----	1.
INTRODUCTION -----	1.
FIELD PROCEDURE -----	2.
RESULTS -----	2.

PLAN (In Pocket) - Magnetic survey,
Bardale Mining & Development Co. Ltd.,
Nicola & Similkameen M.D., B.C.

Department of Mines and Petroleum Resources ASSESSMENT REPORT NO. <u>659</u> MAP.....
--

SUMMARY

A magnetic survey of the Dawn and B & R groups has disclosed a few anomalies indicating moderate concentrations of magnetite.

RECOMMENDATIONS

Bulldozer stripping is recommended to investigate the sources of anomalies at (1) 700 W on line 21 and (2) between 2000 W on line 22 and 2100 W on line 23.

INTRODUCTION

A magnetic survey has been carried out on the Dawn and B & R groups. This property is located south of Brookmere, B.C., and is owned by Bardale Mining & Development Co. Ltd. Field work was carried out between August 24 and September 7, 1964, by the author and by L.R. Kelley.

The magnetic survey covered portions of claims Dawn 1-8, 10, 12 - 16 and B & R 1 - 11, 13, 18 - 22, 25 - 34.

The instrument used was a Sharpe MF-1 fluxgate magnetometer. This measures variations in the vertical intensity of the earth's magnetic field.

The purpose of the survey was to outline zones of magnetite chalcopyrite mineral association on the property.

FIELD PROCEDURE

East-west picket lines were laid out at 400 foot intervals from a base line on the east side of the property. Magnetometer readings were taken at 50 foot stations along these picket lines. These readings were corrected for diurnal magnetic variation. A total of 33 line miles was surveyed.

RESULTS

The results are shown on the accompanying plan. Contours are drawn at the 4000, 2000, 1000, 0, -1000 and -2000 levels. It will be observed that contours were not drawn around single-station values in all cases but were drawn to indicate consistent trends.

The most pronounced anomaly occurs at about 2000 W on line 22. Low values are observed both on lines 21 and 22. A striking high occurs at 2100 W on line 23 and 2500 W on line 22.

Single-station highs occur at 700 W on line 21 and 4700 W on line 17. The latter may correlate with known mineralization.

The above anomalies are of modest amplitude and indicate only moderate concentrations of magnetite.

Respectfully submitted,



D. W. SMELLIE, P.Eng.

DWS:ds

October 2, 1964

BARDALE MINING & DEVELOPMENT LTD.

LAWLESS CREEK MINES LIMITED

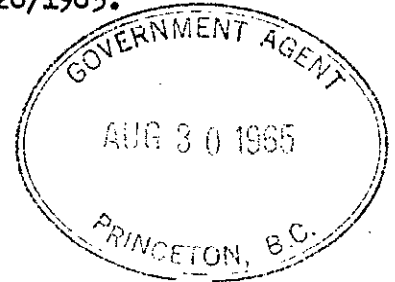
MORSEBY MINES LIMITED.

730 - 510 West Hastings Street,
Vancouver 2, B.C.

PHONE NO: 684-8052.

August 26/1965.

Mr. B. E. T. Kennelly,
Government Agent,
Princeton, B.C.



Dear Sir,

We received your letter of August 13/1965 today. The unavoidable delay in replying, is due to transit from our registered office to our administration office.

In respect to your request on the Geophysical Survey conducted by Dr. Don Smellie, P.Eng., Consulting Geophysicist -

1. The instrument used on the picket lines was a Brunton Compass, with a 200 ft. chain. The lines checked at 500 ft. intervals to establish the accuracy of the 400 ft. spacing between lines.
2. Unit used as plotted on map as the gamma.

We trust the foregoing is satisfactory.

Our registered office is now located at 625-925 West Georgia Building.

Our administration office as above.

Yours very truly,

A handwritten signature in cursive script that reads "Ronald E. Dale".

Ronald E. Dale.

BARDALE MINING & DEVELOPMENT LTD.

LAWLESS CREEK MINES LIMITED

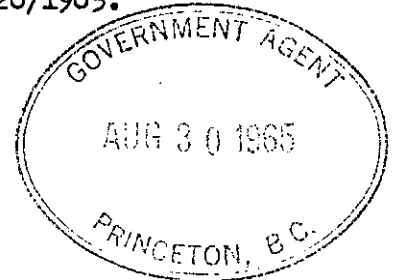
MORSEBY MINES LIMITED.

730 - 510 West Hastings Street,
Vancouver 2, B.C.

PHONE NO: 684-8052.

August 26/1965.

Mr. B. E. T. Kennelly,
Government Agent,
Princeton, B.C.



Dear Sir,

We received your letter of August 13/1965 today. The unavoidable delay in replying, is due to transit from our registered office to our administration office.

In respect to your request on the Geophysical Survey conducted by Dr. Don Smellie, P.Eng., Consulting Geophysicist -

1. The instrument used on the picket lines was a Brunton Compass, with a 200 ft. chain. The lines checked at 500 ft. intervals to establish the accuracy of the 400 ft. spacing between lines.
2. Unit used as plotted on map as the gamma.

We trust the foregoing is satisfactory.

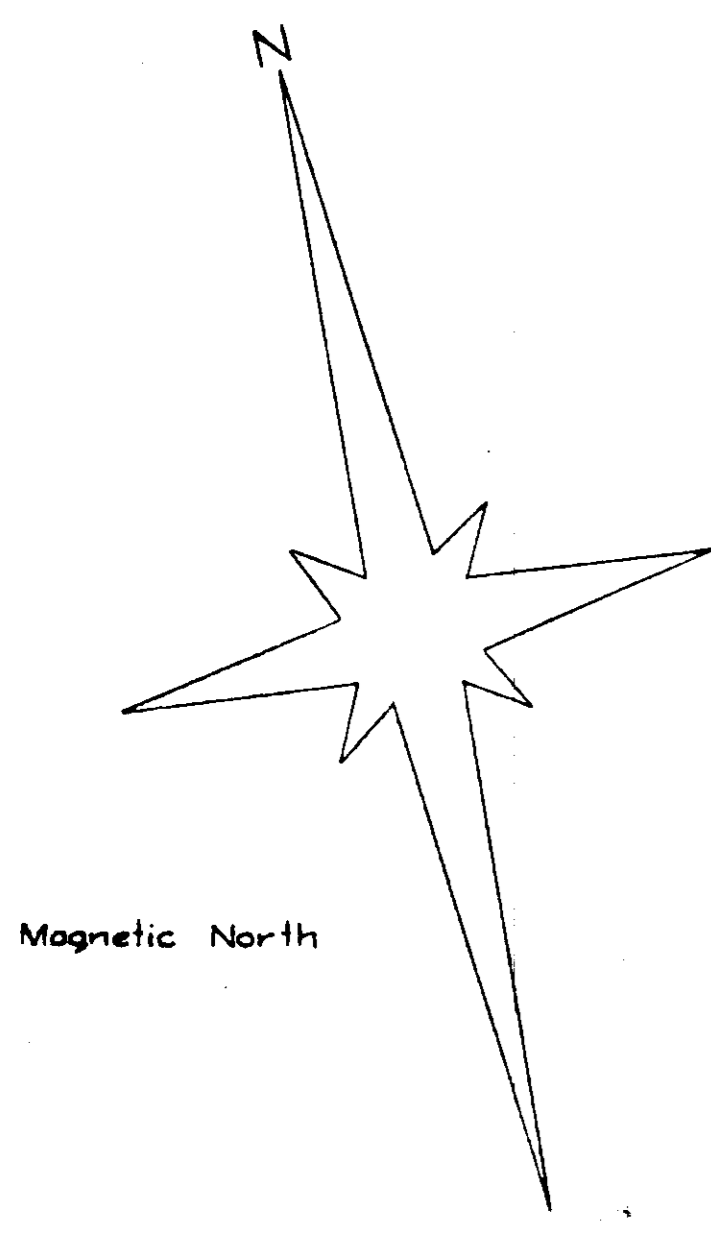
Our registered office is now located at 625-925 West Georgia Building.

Our administration office as above.

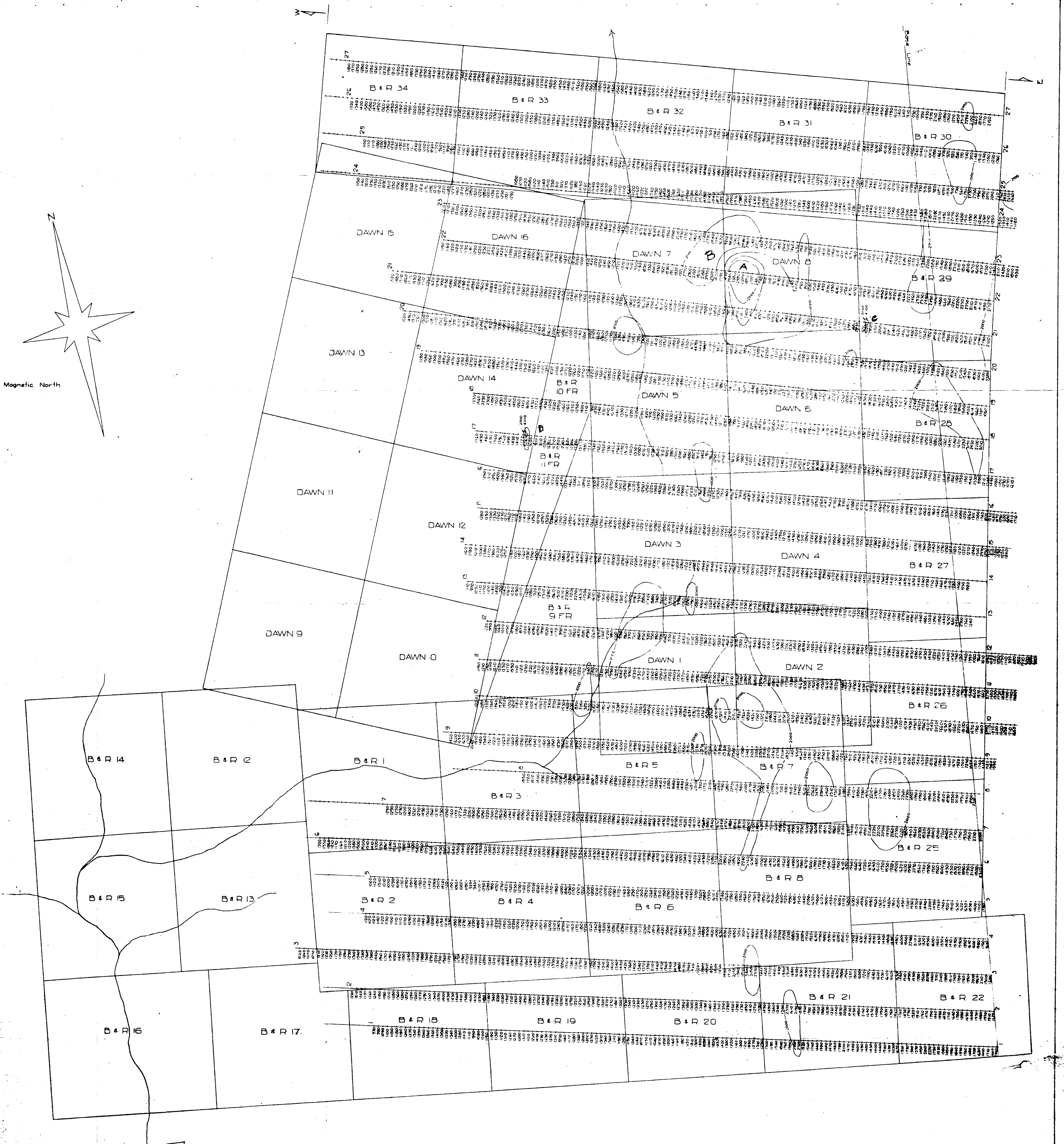
Yours very truly,

A handwritten signature in cursive script that reads "Ronald E. Dale".

Ronald E. Dale.



Magnetic North



Department of
Mines and Petroleum Resources
ASSESSMENT REPORT
No. 659 MAP

MAGNETIC SURVEY
BARDALE MINING & DEVELOPMENT CO. LTD.
NICOLA & SIMLKAMENE M.D. B.C.
Scale: 1"=400' Date: October 2 1964
To accompany Geophysical report by Donald
W. Simelis, P. Eng., on the Dawn and B & R
groups.

659

D. Simelis