

824

GEOPHYSICAL REPORT

KAT GROUP

CONTENTS

	<u>Page</u>
INTRODUCTION -----	1.
INSTRUMENTATION -----	1.
FIELD PROCEDURE -----	1.
RESULTS -----	2.

#1 PLAN (In Pocket) - Self Potential Survey,
KAT group, Retallack area, Slocan M.D., B.C.

INTRODUCTION

A self-potential survey has been carried out on the KAT group. This property is located west of Retallack, B.C., and is owned by the author. Field work was carried out on August 20 and 21, 1966, by the author and D.A. McDonald, on August 21 assisted by T. Soepboer. Work was carried out on KAT 1, 3, 11FR, 13 and 17FR mineral claims.

INSTRUMENTATION

The McPhar self-potential unit was used for the survey. This consists of two porous pot electrodes connected by wires to a null-type potentiometer.

FIELD PROCEDURE

The natural potential was measured between the rear electrode at one station and the forward electrode at the next station. The array was then moved to successive pairs of stations, so that the resultant self-potential was the cumulative total of the potential differences up to the particular station.

Measurements were made along a base line 4400 feet long and along cross-lines at stations 100 feet apart.

RESULTS

The accompanying plan shows the self-potential values at each station measured. The generally high values are interpreted as due to graphite in slate. Superimposed are local negative features which have been joined along the assumed geological strike and are marked as Anomalous Trends. These may be indicating zones of increased conductivity.

Respectfully submitted,

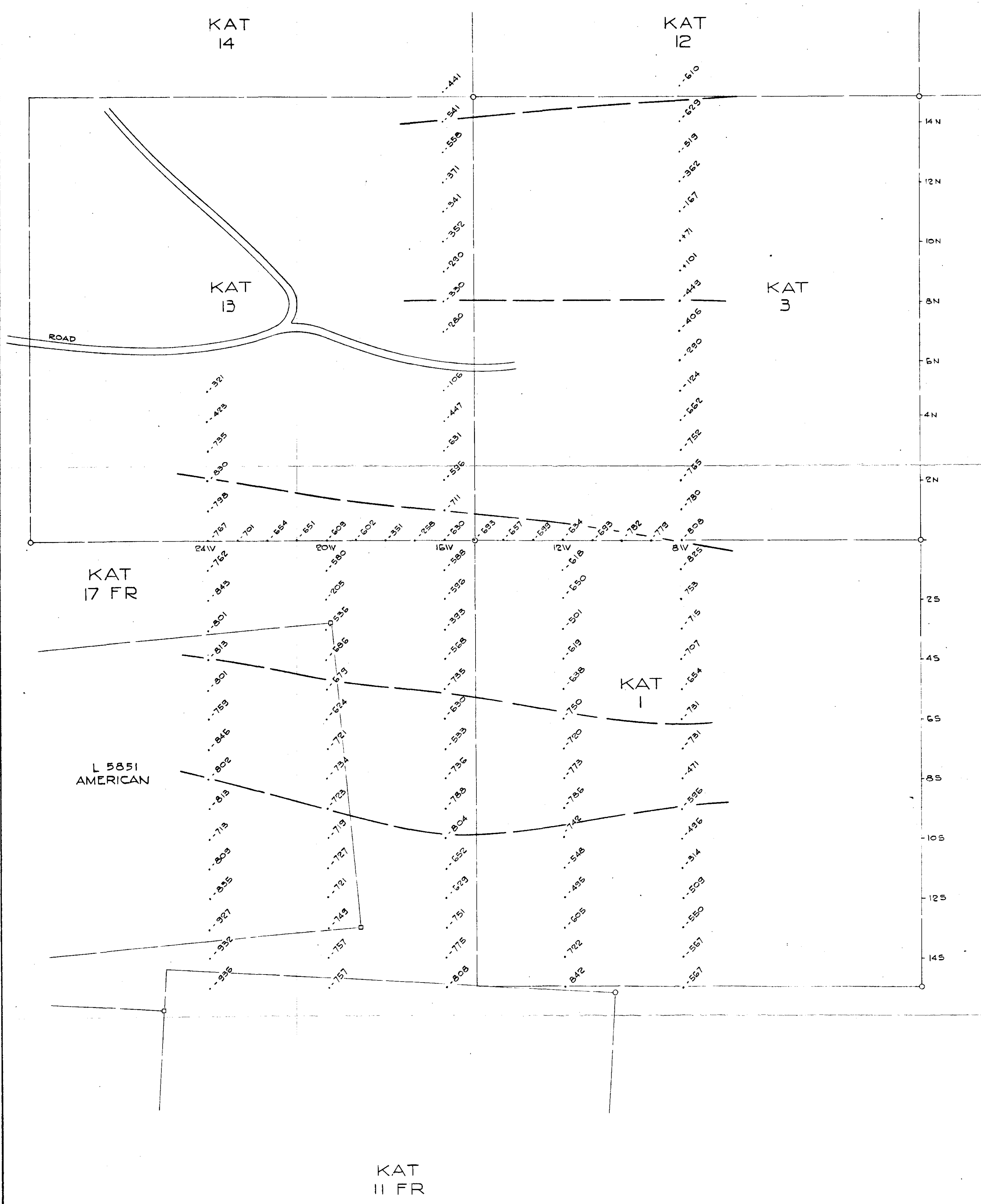


DWS:ds

D. W. SMELLIE, P.Eng.

October 13, 1966

824



Department of
Mines and Petroleum Resources
ASSESSMENT REPORT
NO. *824* MAP # *1*

SELF POTENTIAL SURVEY
KAT GROUP
Scale: 1" = 200'
Values in Millivolts
Anomalous Trends
To accompany Geophysical report by
Donald W. Smeltz, P. Eng. on the KAT group,
dated October 13, 1966
D. W. Smeltz

824