

930

THE NORTH WEST SILVER GROUP

TRAIL CREEK MINING DIVISION

BRITISH COLUMBIA.

Vancouver, B.C.  
February 27th, 1967.

George L. Mill, P.Eng.

TABLE OF CONTENTS

Total Number of Pages - 5

	<u>PAGE</u>
Property	1
Location and Accessibility	1 and 2
Lot 2393	2
1966 Assessment Program	3
Geochemical Survey	3
1. - Personnel	3
2. - Procedure Followed	3
3. - Results of Survey	3 and 4
4. - Interpretation	5

ENVELOPE CONTENTS:

- 2 Map showing Location and Nomenclature of Lines Sampled.
- 1 Map showing approximate location of Lot 2393.
- Certificate of Analysis - T.S.L. Laboratories
- Copy of Invoice - T.S.L. Laboratories.
- Photostat of Payment to Cross and Schwartz.

THE NORTH WEST SILVER GROUP

Property

The North West Silver Group consists of eight (8) claims held by right of location. They are recorded in the name of Rudy Martin (F.M.C. 40386) of 628 E. 57th Avenue, Vancouver, B.C. and are presently under option to Walter S. Davidson (F.M.C. 47614) of 1401 Lynn Valley, North Vancouver, B.C. Assessment work for the current year was done for the account of Davidson. The claims comprising the group are identifiable as follows:

<u>CLAIM</u>	<u>RECORD NUMBER</u>
North West Silver #1	1857
#2	1858
#3	1859
#4	1860
#5	1861
#6	1862
#7	1863
#8	1864

Location and Accessibility

The North West Silver Group is situated in the Trail Creek Mining Division. It lies on the northwesterly slope of Bulldog Mountain, its northern boundary being approximately one-half mile due south of Renata (49° 118° S.E.), a community on the west shore of the Lower Arrow Lakes. The southern quarter of the group, as staked by Martin, overlies Lot 2393 - a Crown granted mineral claim held jointly by J. Rothery of Nelson, B.C. and Owen Wheeler of Rock Creek, B.C.

The claims are presently accessible from Renata via the forestry road to the Bulldog Mountain lookout. This lookout is also accessible from the south - which route could be utilized when the eventual flooding of

Renata due to current hydro developments precludes access via the northern route.

Lot 2393

As this Crown-granted claim lies within the boundaries of the group, as staked, some comments relative to its history seem warranted. On this claim are located the main workings of the former Mountain Chief Mining Company which operated in the area between the years 1917 and 1920. Operations were suspended in 1920 due to failure to meet financial commitments. This Company, together with a subsequent operator on a lease basis, shipped approximately 1300 tons of cobbled copper ore from an open cut 135 feet in length. Shipments are said to have averaged about 5% copper and 2 ozs./ton silver.

At the southern end of this open cut the Mountain Chief Company sank an inclined shaft to a depth of 100 feet. From the 50 foot station of this shaft a drift was driven a distance of 30 feet along the strike of the open cut. From the face of this drift an inclined raise breaks through to the floor of the open cut at its northern end. The workings are presently flooded and no reliable information is available relative to the success of this underground venture but the workings appear to disregard the apparent dip of the structure. The walls of the open cut show disseminated copper mineralization with concentrations appearing in the occasional fractures. Surface mineralization in the area appears to occur in numerous but irregular fracture lines in siliceous limestone close to its contact with intrusive granite masses.

## The 1966 Assessment Program

A preliminary geochemical survey of the area contained within the boundaries of the group was undertaken by Davidson last fall pending the outcome of negotiations relative to the acquisition of Lot 2393, either by outright purchase or on an option basis. The major surface exposure lies within its boundaries and its acquisition prior to the planning of further work is desirable.

## The Geochemical Survey

### 1. - Personnel

The actual field work was done by Thomas H. Cross and Walter R. Schwartz under the direction of the writer. A statement of the qualifications of these men has been filed with the application to record the work.

### 2. - Procedure Followed

Lines were cut at 500 foot intervals at right-angles to the Base Line which followed roughly the location line of the claim group. Soil samples were taken at 200 foot intervals along these lines when soil conditions permitted. All samples were taken at a minimum depth of 12 inches where practical, after cleaning off all surface debris. Material sampled was a light-colored alkaline soil frequently associated with fine granitic particles.

### 3. - Results of Survey

Results of the geochemical survey of the area of the group as a whole were not encouraging. Field tests on the large majority of the samples taken reported negligible copper content. It is noted however that any contained copper in the soil favors roughly the strike projection of the productive outcrop on Lot 2393. This outcrop strikes south-east and dips  $60^{\circ}$  to the north-east.

Samples on which field analyses appeared to warrant laboratory analyses were forwarded to T.S.L. Laboratories in Vancouver. Tabulation of results from this source follows:

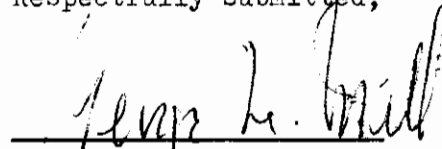
<u>Sample Location</u>	<u>Copper Content Parts/Million</u>	<u>Silver Content Parts/Million</u>
5S 2E	14	1
10S 6W	9	.5
20S 2E	10	<.5
6W	13	1
8W	11	1
12W	12	<.5
25S12W	10	<.5
35S 8W	11	<.5
40S 2E	18	1
12E	6	<.5
14E	13	1
12W	13	1
14W	35	2
45S12E	14	1
10W	16	<.5
12W	13	<.5
50S10E	13	1
14E	14	<.5
4W	16	2
55S 4E	200	2.5
4W	36	1
60S 2E	56	1
6E	16	<.5
10W	44	1
14W	26	1

Copy of the certificate from the Laboratory together with copy of covering invoice is enclosed in the attached envelope.

4. - Interpretation

Based on geochemical results the property, in its present status, offers little inducement for further exploration unless negotiations are finalized relative to the acquisition of Lot 2393. The productive outcrop lies across the location line of the group just south of Line 50 + 00 as seen on the enclosed map. Projecting its line of strike in both directions across the Lot 2393 boundaries to the North West Silver Group boundaries leaves a rather limited amount of strike length legally held under option by Davidson. In the event of the acquisition of Lot 2393 the writer is of the opinion that a series of drill holes against the dip of the outcrop is warranted but that, in all probability, any existing ore bodies would be relatively small and irregular.

Respectfully submitted,



George L. Mill, P.Eng.

OUR FILE M-101-1

YOUR FILE 166-Trail Creek

ADDRESS YOUR REPLY

TO \_\_\_\_\_

APR 10 '67 PM



DEPT. OF MINES  
AND PETROLEUM RESOURCES



Rossland, B.C.  
April 6th, 1967.

REFERRED TO	DATE	INITIAL
D.M.		
C.C.C.	✓	
C.C.		
D.C.G.C.		
G.M.C.		
ACCTS.		
G.M.B.		
C.I.		
C.A.		
R. T.		
C.P.E.		

Chief Gold Commissioner,  
Parliament Buildings,  
Victoria, B.C.

3856

Dear Sir:

Re: North West Silver Nos. 1 to 8  
Mineral Claims. (1857/64-March)  
Geochemical Report.

As requested in your letter of March 28th I submit the following information which has been given to me by Mr. Walter S. Davidson.

1. The method used in the preliminary field test of the samples was the Rubianic method.
2. (a) The instrument used to take the samples was a grub-hoe.
- (b) The packaging used was a standard soil sample Kraftenvelope, supplied by Technical Services Laboratories Limited.
- (c) The samples were dried in the basement of the operator's home and screened through a 50 mesh screen.
- (d) The samples were tested in the Technical Services Laboratories by the hot  $HNO_3$  acid extraction metals determined by A.A.

Yours very truly,

Wm. L. Draper,  
Mining Recorder.

WLD/a



T S L

# Laboratories Limited

325 HOWE STREET - VANCOUVER 1, B.C.

TELEPHONE 684-1374

ASSAYERS  
CHEMISTS  
GEOCHEMISTS

C  
H  
A  
R  
G  
E  
T  
O

Mr. Davidson,  
#304-540 Burrard Street,  
VANCOUVER 1, B.C.

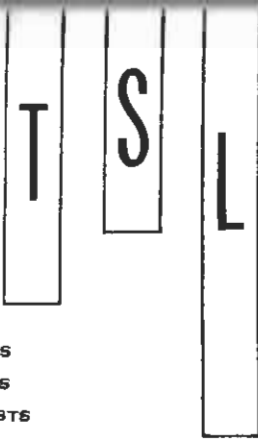
INVOICE NUMBER

0837

SHIPPED TO:

DATE:	REFERENCE NO.:	YOUR ORDER NO.:		
Sent. 30/66	V - 993			
SHIPPED:	VIA:	TERMS: NET 30 DAYS	UNIT PRICE	TOTAL
To:	<p>C O P Y</p> <p>26 soils for Cu. and Ag. plus sample preparation charge</p> <p>To accompany Geochemical Report by George L. Mill, P. Eng., on the North West Silver Group on Bulldog Mountain (Renata), Trail Creek Mining Division dated February 27th, 1967.</p> <p><i>George L. Mill</i></p>		<p>39.00 5.20</p>	<p>\$44.20</p>
			P A I D (Nov. 16, 1966)	

INVOICE



# Laboratories Limited

325 HOWE STREET - VANCOUVER 1, B.C.

TELEPHONE 684-1374

ASSAYERS  
CHEMISTS  
GEOCHEMISTS

## CERTIFICATE OF ANALYSIS

SAMPLE(S) FROM

MR. WALTER DAVIDSON  
304-540 BARRARD ST.  
VANCOUVER, B.C.

REPORT NO.

V0993-1

SAMPLE(S) OF

SOIL

RESULTS IN PARTS PER MILLION

	SAMPLE No	Cu	Pb	Zn	Ag	Ni	Mo	Co
1	5S 2E	14			1			
2	10S 6W	9			.5			
3	20S 2E	10			4.5			
4	6W	13			1			
5	8W	11			1			
6	12W	12			4.5			
7	25S 12W	10			4.5			
8	35S 8W	11			4.5			
9	40S 2E	18			1			
10	12E	6			4.5			
11	14E	13			1			
12	18W	13			1			
13	14W	35			2			
14	45S 12E	14			1			
15	10W	16			4.5			
16	12W	13			4.5			
17	50S 10E	13			1			
18	14E	14			4.5			
19	4W	16			2			
20	55S 4E	200			2.5			

Sept 29/66

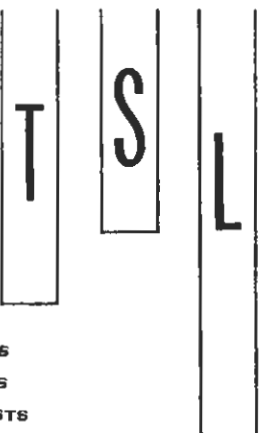
<= less than .5 ppm.

DATE per February 20, 1967

SIGNED

DIVISION OF TECHNICAL SERVICE LABORATORIES





# Laboratories Limited

325 HOWE STREET - VANCOUVER 1, B.C.  
TELEPHONE 684-1374

ASSAYERS  
CHEMISTS  
GEOCHEMISTS

## CERTIFICATE OF ANALYSIS

SAMPLE(S) FROM **MR. WALTER DAVIDSON**

REPORT NO.  
**VD993-2**

SAMPLE(S) OF **SOIL**

RESULTS IN PARTS PER MILLION

	SAMPLE No	Cu	Pb	Zn	Ag	Ni	Mo	Co
1	55S 4W	36			1			
2	60S 2E	56			1			
3	6E	16			4.5			
4	10W	44			1			
5	60S 14W	26			1			
6	# 41	590			5			
7								
8								
9								
10	Cu & Ag by hot HNO <sub>3</sub> acid extraction.							
11	metals determined by A.A.							
12								
13								
14								
15								
16								
17								
18								
19								
20								

DATE Sept 29/66  
per February 20, 1967

SIGNED [Signature]



Thomas H. Cross  
Occupation - Prospector.

<u>FORMER EMPLOYERS</u>	<u>CAPACITY</u>	<u>TIME WORKED</u>
Madsen Red Lake Mines Ltd.	Supervisor	2 years
Eldorado Mine, Port Radium.	Supervisor	2 years
United Keno Hill Mines Ltd.	Supervisor	3 years
Ventures Ltd.	Prospector, Party Chief.	5 years
Falconbridge Nickel Mines Ltd.	Prospector, Party Chief.	5 years

COURSES: Department of Mines, Province of Saskatchewan,  
Lac La Ronge, Prospecting,  
Geochemical Exploration, Geophysics,  
B.C.&Yukon Chamber of Mines,  
Exploration Techniques.

Expensess on trip to Renata B.C.

Sept. 1966

Orange survey flagging, fieldbook	8.72
Marking pens	3.15
Map	0.50
Paper	0.53
Grub	59.53
Meals	13.30
White Gas	4.76
Cabin Rent, Renata B.C.	15.-
Transportation 900 miles 0.10 per ml	90.-
Chemicals and bags for 100 soil tests	15.-
Incidentals	5.--
	-----
	\$ 215.49
./. Advance	300.-
	-----
Balance	\$ 84.51

~~XXXXXX~~

10 days at \$ 80.- 800.-

	800.-
Expenses	215.49
Total	<del>XXX</del> -
	1015.49

Received from Walter Davidson 1016.50 in cash

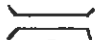



Payment in Full

Walter R. Schweich  
 J. W. Cross

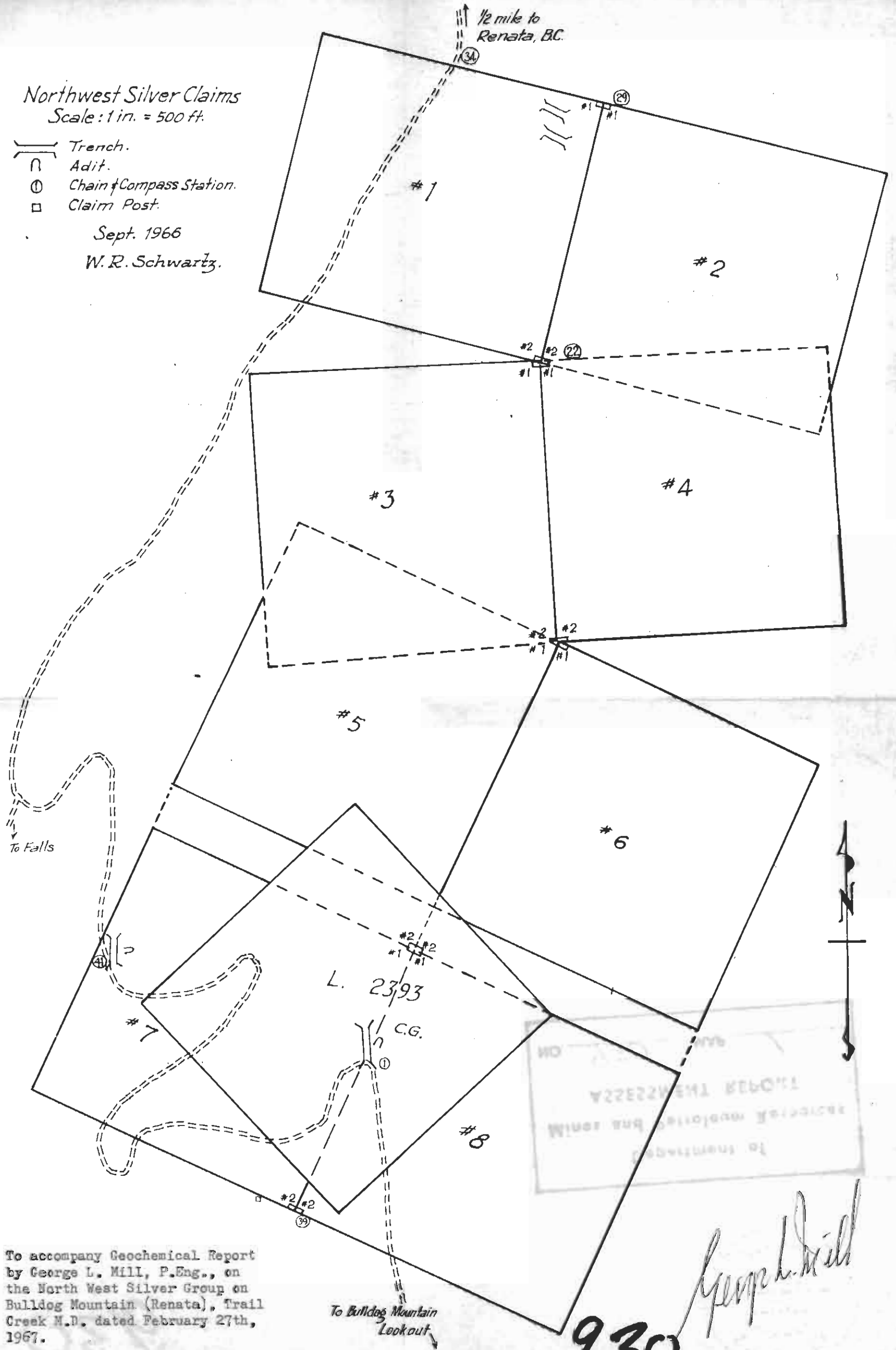
To accompany Geochemical Report by  
 George L. Mill, P.Eng., on the North  
 West Silver Group on Bulldog Mountain  
 (Renata), Trail Creek Mining Division  
 dated February 27th, 1967.

George L. Mill

Northwest Silver Claims  
Scale: 1 in. = 500 ft.

-  Trench.
-  Adit.
-  Chain & Compass Station.
-  Claim Post.

Sept. 1966  
W.R. Schwartz.

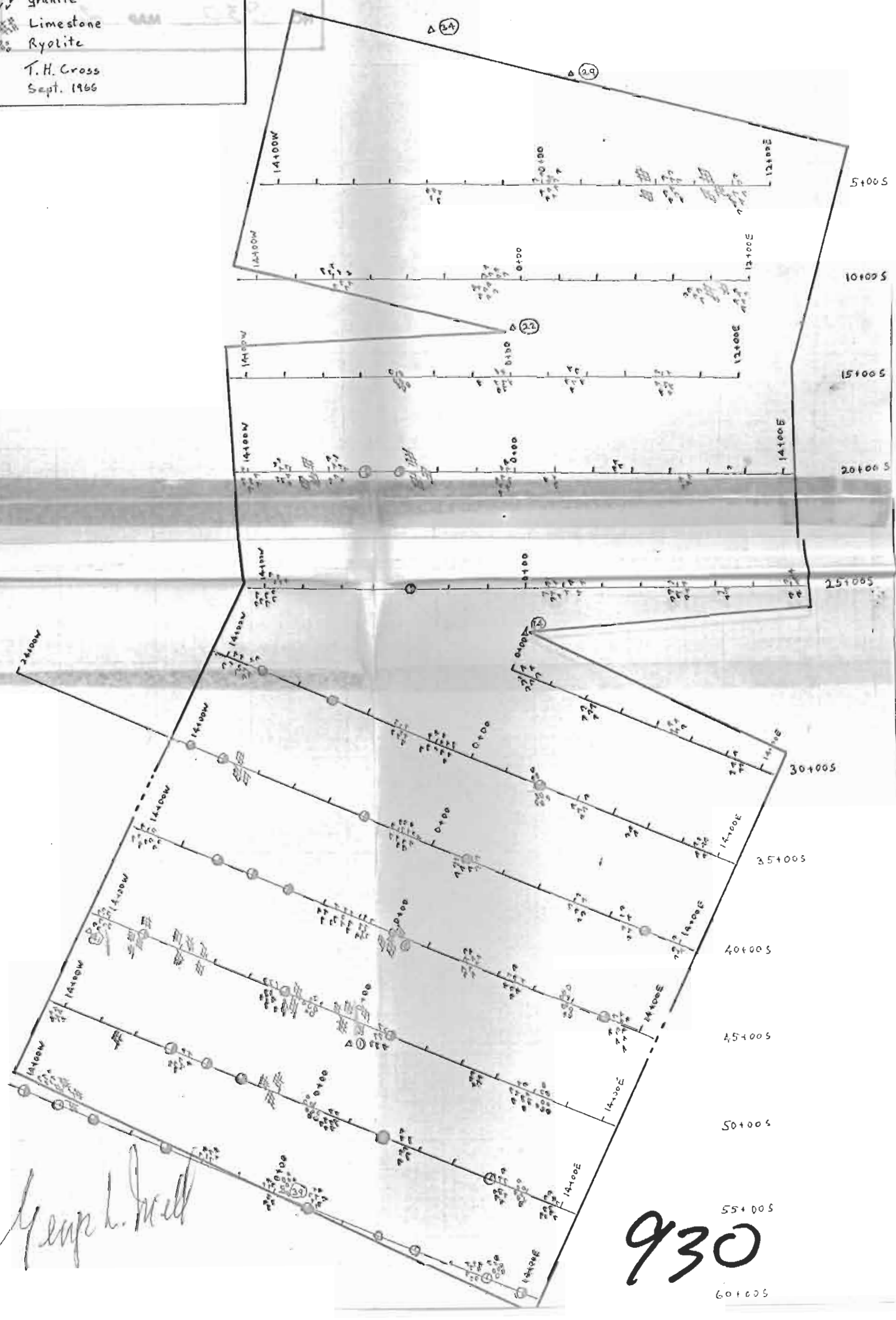


To accompany Geochemical Report  
by George L. Mill, P.Eng., on  
the North West Silver Group on  
Bulldog Mountain (Renata), Trail  
Creek N.D. dated February 27th,  
1967.

930 *George L. Mill*

Reconn. Soil Sampling  
 N.W. Silver Claims  
 Scale 1" = 500'  
 Department of Mines and Petroleum Resources  
 ASSESSMENT REPORT  
 High Cu  
 Low Cu  
 Granite  
 Limestone  
 Rhyolite  
 T. H. Cross  
 Sept. 1966

To accompany Geochemical Report  
 by George L. Mill, P. Eng., on  
 the North West Silver Group on  
 Bulldog Mountain (Renata),  
 Trail Creek M.D. dated  
 February 27th, 1967.



*George L. Mill*

930