

1013

NORANDA EXPLORATION COMPANY, LIMITED

GEOCHEMICAL SOIL SURVEY

of the

MAD AND NOD GROUPS OF MINERAL CLAIMS

EIGHTEEN AIR MILES NORTHWEST

of

CLEARWATER, B. C.

51° 120°

W. Rainboth, P. Eng.

August, September, and October, 1966

TABLE OF CONTENTS

	<u>Page</u>
Introduction.....	1
Summary - Conclusion - Recommendations.....	1
General Geology.....	1
Geochemistry.....	2
Results.....	2

MAP: (In Pocket)

/ Geochemical Soil Survey (Mo.) - 1" : 1,000'

NECRANDA EXPLORATION COMPANY, LIMITED
GEOCHEMICAL SOIL SURVEY
of the
MAD AND NOD GROUPS OF MINERAL CLAIMS

INTRODUCTION:

The present report deals with a geochemical soil survey on a group of 112 contiguous claims designated the Mad (Claims 1 to 32 inclusive), and Nod (Claims 1 to 80 inclusive), located 18 air miles north west of Clearwater, B. C. The ground was staked during August 1966, to cover an area of silt samples high in molybdenum. The purpose of the survey was to attempt to locate the sources of the molybdenum values. The work was done by J. Baker, K. Kline, J. Woelbern, R. Williams, and D. Smith during August, September, October, and November, 1966. W. Rainboth supervised. A total of 1323 samples were taken at 200 foot intervals along claim lines and intermediate pace and compass traverses about 900' apart. All traverses were flagged and tied onto either chained tie lines or a good logging road, that also provided excellent access to the group. Results are plotted on a 1,000 foot scale map.

SUMMARY - CONCLUSION - RECOMMENDATIONS:

A geochemical soil survey for molybdenum was done on the Mad - Nod Group (112 claims). Results indicate an anomalous area about 14,000 feet by 7,000 feet, containing a smaller (2,000' x 2,000') much more intense anomalous high area with values up to 300 ppm. Some minor amounts of molybdenite were found by prospecting, but this work was interrupted by winter. Continued prospecting and geological mapping is recommended to attempt to locate targets for bulldozing and drilling.

GENERAL GEOLOGY:

The entire area appears to be underlain by a relatively unaltered quartz-diorite. There seems to be two major fracture directions; east, and slightly east of north. A few quartz stringers were seen in the east set, containing some specular hematite and rare specks of molybdenite. A few acid and basic dykes were seen.

GEOCHEMISTRY:

Samples were collected from the "B" horizon, which was usually about 6 inches below the top of the surface organic horizon. Determinations were done by Coranex Ltd., 1521 Pemberton Avenue, North Vancouver, B. C., using the following procedure. A $\frac{1}{2}$ gram sample is digested in perchloric acid for dissolution of the molybdenum, and placed in a heated sand bath for 4 hours. The molybdenum determination is done by compacting any ions into solution with NH_4SCN . Stannous chloride is used for reducing all ions except molybdenum, which is extracted colourmetrically by ether.

RESULTS:

Values up to 300 ppm were obtained in an area about 14,000 feet by 7,000 feet. Near the north end of lines N 37 E and N 28 E a concentration of high values occur in an area about 2,000 feet by 2,000 feet. Here, a few quartz stringers were found by prospecting and contained minor amounts of molybdenite. This work was terminated by arrival of winter.

Respectfully submitted,

W. Rainboth

W. Rainboth, P. Eng.

MARCH 8, 1967



Supplement to Geochemical Survey Report on
Mad Nod Claims, Kamloops Mining Division.

The original report covers 32 Mad Claims (Record Numbers 59420-59447, 59872-59875) and 80 Nod Claims (Record Numbers 59448-59477, 59822-59871).

The samples were taken by digging a hole with a spade and removing soil material from the correct horizon.

The sample material was placed in "Hi Wet Strength Kraft, 3 1/2" X 6 1/8" Open End" envelopes and the grid station locations were marked on the envelopes with indelible felt pens.

The samples were hung in a warm room to dry and were hand screened with -80 mesh net.

W. Rainboth.

William Rainboth.



DOMINION OF CANADA:
 PROVINCE OF BRITISH COLUMBIA.
 To Wit:

In the Matter of a Statement of Exploration Expenses on 112 contiguous mining claims situated in the Kamloops Mining Division; 32 Mad Claims (Record Numbers 59420-59447, 59872-59875) and 80 NOD CLAIMS (Record numbers 59448-59477; 59822-59871)

I, **W.W. Young (FMC 47515) AGENT FOR NORANDA EXPLORATION COMPANY, LIMITED (NO PERSONAL LIABILITY) (FMC 67502)**
 of **1050 Davie Street, Vancouver 5, B.C.**

in the Province of British Columbia, do solemnly declare that exploration costs of the 1966 field season geochemical soil survey were:

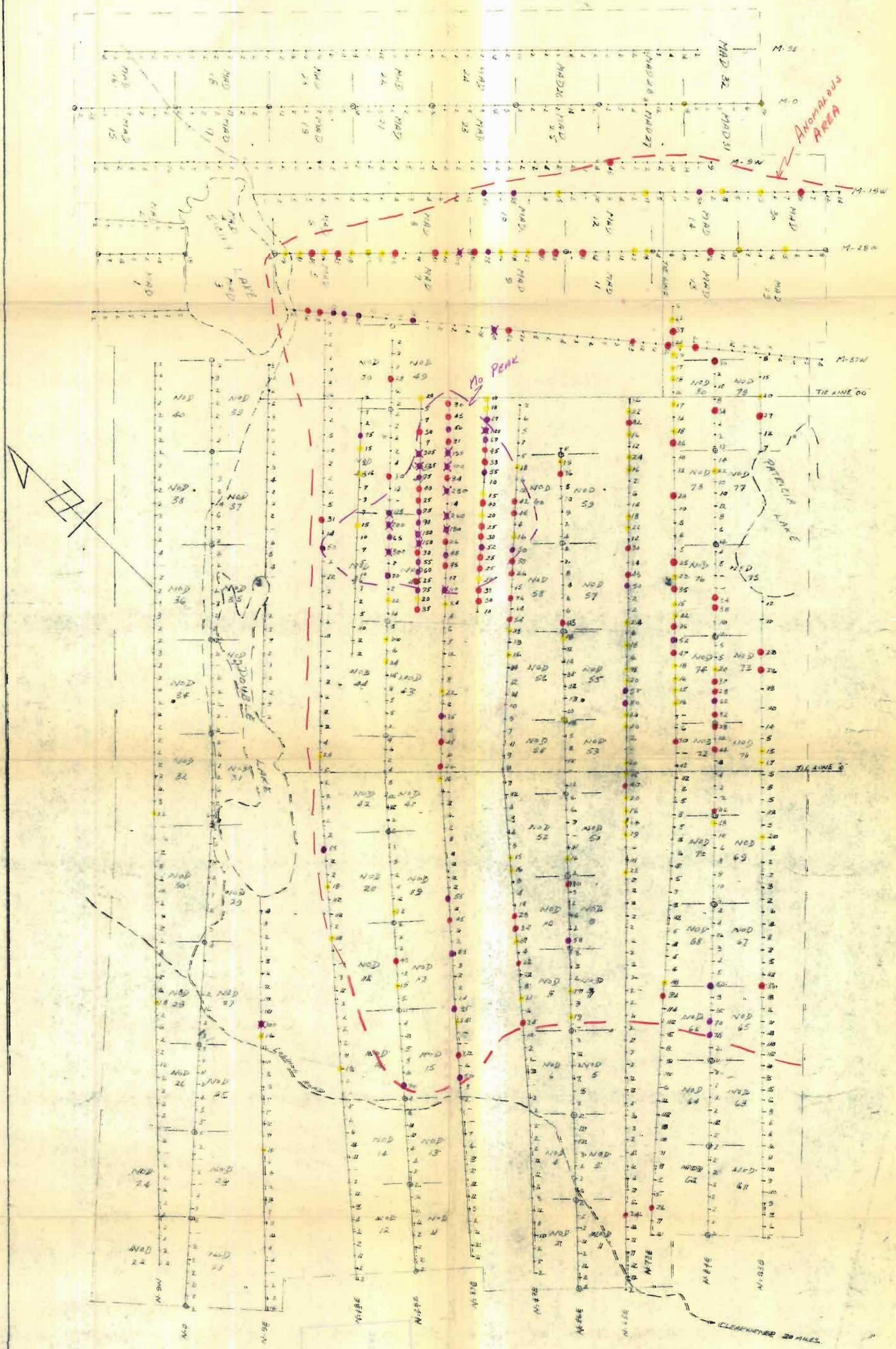
<u>SALARIES AND WAGES FOR COLLECTING SAMPLES</u> (Including MCB, UIC, Holiday Pay and Canada Pension Plan)			
<u>Month</u>	<u>Personnel</u>	<u>Days</u>	<u>Amount</u>
August	Rainboth, W, Baker, J, Kline, K, Williams, R., Woelburn, J.	123	\$2,681.77
Sept	Same as August	48	1,046.54
October	Rainboth, W., Baker, J., Smith, D.	72	1,569.81
November	Same as October	81	1,766.05
December	Rainboth, W.	10	<u>306.05</u>
			\$7,370.22
	<u>CONSULTING FEES - J.S. Scott.</u>		815.04
	<u>GEOCHEMICAL DETERMINATIONS</u>		
	1125 Mo Determinations @ \$2.50 each	\$2,812.50	
	70 Mo Re-runs @ \$.75 each	<u>52.50</u>	<u>2,865.00</u>
	<u>MAPS AND COMMUNICATIONS.</u>		<u>813.49</u>
			<u>\$11,863.75</u>

And I make this solemn declaration conscientiously believing it to be true, and knowing that it is of the same force and effect as if made under oath and by virtue of the "Canada Evidence Act."

Declared before me at the *city*
 of *Vancouver*, in the
 Province of British Columbia, this *26th*
 day of *May*, 1967, A.D.

W W Young

Evelyn M. Gault
 A Commissioner for taking Affidavits within British Columbia or
 A Notary Public in and for the Province of British Columbia.



VALUES - ppm. Mo.

- - 15+
- - 25+
- - 50+
- - 100+



1013

MORANDA EXPLORATION CO. LTD.
 MAND-IND GROUP B.C.
 GEOCHEMICAL SURVEY

TO ACCOMPANY REPORT BY W. RAINESBOTH, P. ENG. KAPILOOPS M.D.
 MARCH 5, 1967

1"=1000'

MARCH 10, 1967