

1026

GEOCHEMICAL REPORT

ON

NET, SUN & AKU MINERAL CLAIMS

1966 - 67

N.T.S. 92 - P

KAMLOOPS MINING DIVISION

July 26, 1967

D. H. Helgesen

CONTENTS

	<u>Page</u>
<u>LOCATION & ACCESS</u>	1
<u>METHOD OF SURVEY</u>	1
<u>LABORATORY TECHNIQUE</u>	1
<u>GEOLOGY</u>	2
<u>INTERPRETATION & CONCLUSIONS</u>	2
<u>STATEMENT OF WORK</u>	4
<u>STATEMENT OF QUALIFICATIONS</u> <u>& EXPERIENCE - D.H. Helgesen.</u>	5
<u>STATEMENT OF QUALIFICATIONS</u> <u>S.N. Charteris</u>	6

LIST OF ILLUSTRATIONS

* / Map of Claim Groups	Figure 1
Geochemical Maps 1 and 2 # 2 ^A , 2 ^B	In Pocket 1
Geochemical Maps 3 and 4 # 3 ^A , 3 ^B	In Pocket 2

GEOCHEMICAL REPORT
ON
NET, SUN & AKU MINERAL CLAIMS
1966-67

LOCATION & ACCESS

The Blue, Red, Green, Yellow and Purple Groups of Mineral Claims are located on Swayback Ridge; 15 miles northwest of Clearwater, B.C. in the Kamloops Mining Division. These groups are contiguous and include 181 mineral claims. (Net Block 91 mineral claims, Sun Block 52 mineral claims, and Aku Block 38 mineral claims). See Figure 1.

Access is by logging road from Clearwater and then by trail.

METHOD OF SURVEY

Between July 27th and September 10th, 1966 and between June 15 - 25, 1967 a geochemical survey was completed over all parts of the above mineral claims. 5445 B-horizon soil samples were taken at 200' intervals on pace and compass lines totalling 144 miles in length. The lines were run at 500' intervals in a northwest - southeast direction normal to the majority of the claim location lines which were used for control.

All samples were placed in water resistant paper packets on which was marked the following information: line and sample number, date, depth, horizon, colour and moisture content. The samples were shipped to the Falconbridge Laboratory in Vancouver for analysis.

LABORATORY TECHNIQUE

The minus 80 mesh portion of the dried sample was analyzed for copper and molybdenum by standard geochemical methods.

In the copper analyses 100 mg of sample were digested on a hotplate with 0.5N hydrochloric acid for 40 minutes. An aliquot of the solution was then buffered to pH6 and shaken with biquinoline solution to develop the coloured copper complex. The colours so obtained were then compared with previously prepared standards to obtain the concentration of copper in the sample.

Molybdenum was determined by fusing 250 mg of sample with alkaline flux to render the molybdenum soluble. The fusion was leached with demineralized water and an aliquot of the leach liquor treated with a 2.5% solution of hydroxylamine hydrochloride in hydrochloric acid and 1% zinc dithiol solution. After shaking to develop the coloured molybdenum complex, the samples were compared with previously prepared standards to obtain the molybdenum concentration.

GEOLOGY

Most of the ground sampled is underlain by Cretaceous (?) biotite quartz monzonite, granodiorite and aplite. A contact between this formation and the Nicola Volcanics occurs on the south western edge of the claim blocks. Its approximate location is plotted on Maps 1 and 4.

INTERPRETATION & CONCLUSIONS

2/ Bedrock is marked over approximately 95% of the area by glacial material of indeterminate depth. The soils sampled are mostly composed of transported rather than residual material. It is difficult therefore to estimate at this time the degree to which the samples are reflecting possible zones of mineralization in the underlying intrusives.

PPM of molybdenum in the soils are shown on Maps 1, 2, 3 and 4. Only anomalous copper values are shown.

Anomalous molybdenum values occur over an area of approximately four square miles. This large areal extent and number of

high values appear to indicate a zone worthy of further detailed sampling and mapping. No definite conclusions can be drawn pending completion of more detailed development.

D. H. Helgesen

D. H. Helgesen

July 26, 1967

Robert

White Cloud

1234567890

25

DOMINION OF CANADA:
 PROVINCE OF BRITISH COLUMBIA:
 To Wit:

In the Matter of

GEOCHEMICAL REPORT ON
 NET, SUN & AKU MINERAL CLAIMS

I, David H. Helgesen
 of Vancouver, B.C.

in the Province of British Columbia, do solemnly declare that the following work was done:

Anderson, N.	- Prospector and geochemical operator 30 July - 31 August 1966 - 33 days @ \$25/day	\$825.00
Cameron, C.	- Party chief and geochemical operator. 27 July - 27 August 1966 - 32 days @ \$24/day	\$768.00
Campbell, J.	- Sampler - 27 July - 27 August 1966 - 32 days @ \$17.50/day.	\$560.00
Cartledge, R.	- Sampler - 1 August - 3 Sept. 1966 - 34 days @ \$17.50/day	\$595.00
Conlan, J.	- Sampler - 1 August - 31 August 1966 - 52 days @ \$17.50/day.	\$560.00
Hamilton, D.	- Party Chief & Geochemical operator 1 August - 10 September 1966 - 41 days @ \$24.00/day.	\$984.00
Harrison, D.	- Sampler - 27 July - 27 Aug. 1966 - 32 days @ \$17.50/day.	\$560.00
Hudson, G.	- Sampler - 18 June - 25 June 1967 - 8 days @ \$18.00/day	\$144.00
Laing, I.	- Sampler - 1 Aug. - 10 Sept. 1966 - 41 days @ \$17.50/day.	\$717.50
Lasko, E.	- Sampler - 27 July - 31 Aug. 1966 - 36 days @ \$17.50/day.	\$630.00
McCrum, J.	- Sampler - 13 June - 25 June 1967 - 13 days @ \$18.00/day.	\$234.00
Murray, A.	- Sampler - 13 June - 25 June 1967 - 13 days @ \$18.00/day.	\$234.00
Shinkel, G.	- Sampler - 1 Aug. - 4 Sept. 1966 - 35 days @ \$17.50/day	\$612.50
Helgesen, D.H.	- Field Geologist 27 July - 10 Sept. 1966 - 46 days @ \$27.00/day 13 June - 25 June 1967 - 13 days @ \$27.00/day	\$1,242.00 \$ 351.00

S/T O T A L \$9,017.00

Laboratory Charges - 3445 soil samples @ \$5.00/sample \$10,329.00

TOTAL \$19,346.00

And I make this solemn declaration conscientiously believing it to be true, and knowing that it has the same force and effect as if made under oath and by virtue of the "Canada Evidence Act."

Declared before me at the
 of **KAMLOOPS**
 Province of British Columbia, this
 day of **JUL 28 1967**
MINING RECORDER

, in the presence of **D.H. Helgesen**
 , A.D.

[Signature]

A Commissioner for taking Affidavits for British Columbia or
 A Notary Public in and for the Province of British Columbia.

Above to be divided as follows:

Yellow Group	\$5,515.58
Purple Group	\$4,061.60
Green Group	\$4,275.36
Blue Group	\$4,061.60
Red Group	\$5,634.06
Total-----	<u>\$19,546.00</u>

STATEMENT OF QUALIFICATIONS

Education

Attended Victoria College and University of British Columbia
1955 - 1959. Awarded B.A. degree in Geography.

Experience

1961 - 1962 - Field Assistant, C.J. Surveys Ltd., engaged
in contract geophysical and geochemical prospecting in western Zambia.

1962 - 1964 - Geological Assistant, Roan Selection Trust Ltd.,
Mine Services Division, engaged in geophysical and geochemical inter-
pretation, mapping and diamond drill supervision on the Zambian copper-
belt.

1964 - 1967 - Field Geologist, Falconbridge Nickel Mines
Limited, engaged in mineral exploration in British Columbia.

D.H. Helgesen

D. H. Helgesen

July 26, 1967

STATEMENT OF QUALIFICATIONS

The Mining Recorder
Vancouver, B.C.

August 1, 1967

Dear Sir:

This is to certify that the geochemical work on the Net - Sun - Aku Mineral Claims was done under my supervision.

The geochemical field work was performed under the guidance of Mr. D.H. Helgesen of Vancouver, B.C. Mr. Helgesen attended Victoria College and University of British Columbia 1955 - 1959. This year he received his B.A. in Geography. From 1961 - 1964 he was employed as field assistant and geological assistant in Zambia, since 1964 he has been employed by Falconbridge as field geologist in mineral exploration in British Columbia.

The analyses and evaluation of the results was done under the direction of Dr. Ivor L. Elliott, Chief Geochemist for Falconbridge Nickel Mines Limited. Dr. Elliott received his Doctorate from the Royal School of Mines, Imperial College, London, England. He has been in charge of geochemical surveys in Africa for three years and the Dominican Republic for one year.

I am a graduate in geology from the University of Toronto with post graduate study at the University of Toronto and the Colorado School of Mines. I am a member of the Association of Professional Engineers of Ontario and British Columbia.

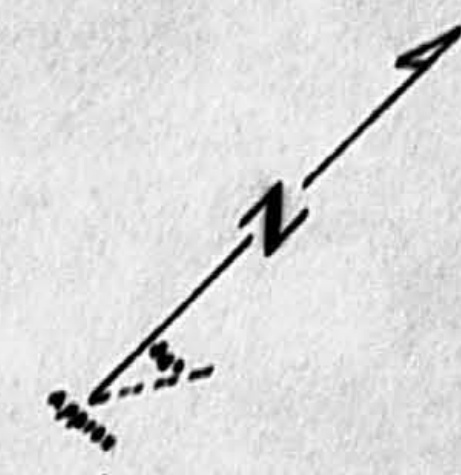
Yours very truly,
FALCONBRIDGE NICKEL MINES LIMITED



S.N. Charteris, P. Eng.

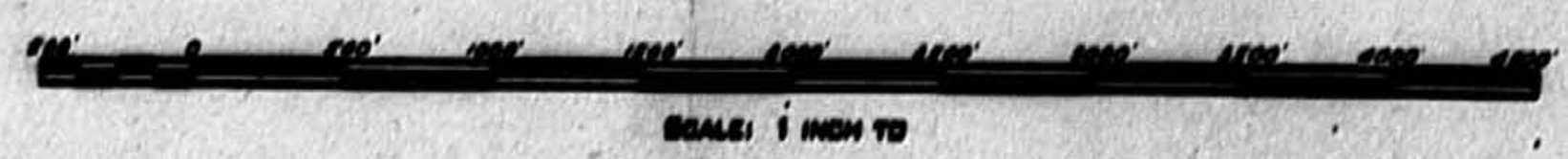
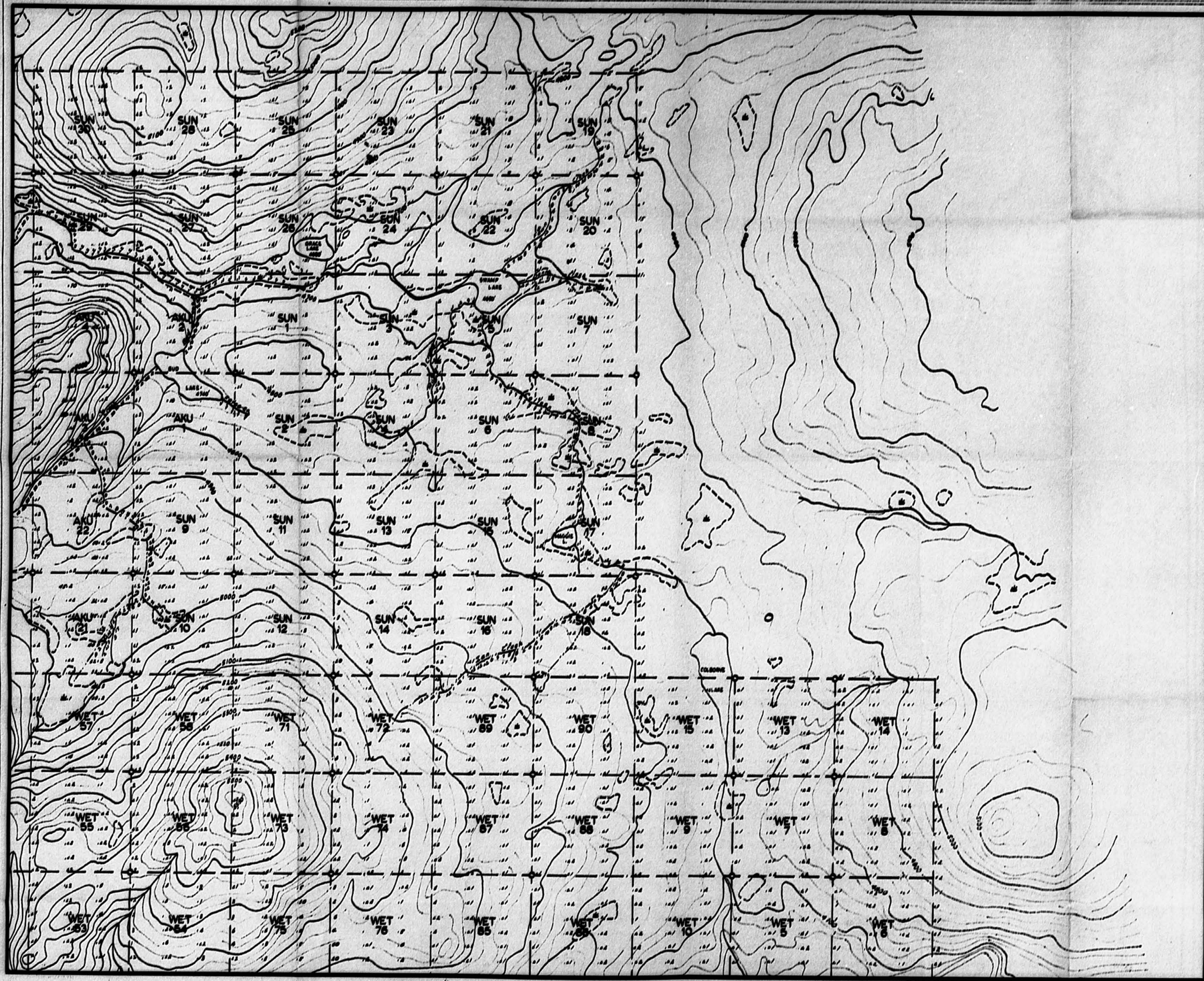
SNC:GK

Department of
Mines and Petroleum Resources
ASSESSMENT REPORT
NO. 1026, MAP 2.



Map Shows 10 ppm. and anomalous Cu

1026



COMPANY . . . FALCONBRIDGE NICKEL MINES LTD.
PROPERTY . . . WESAKU
LOCATION . . . CLEARWATER, B.C.

WORKING PLACE . . .
TYPE OF MAP . . . GEOLOGICAL SURVEY OF CANADA
BASED ON . . . S.N. 1026-1027-1028 JULY 1967

DATE . . . 26 JULY 1967
DRAWN BY . . . D.M.M. [Signature]
DATE OF WORK . . .

Adjoins Sheet 1

Adjoins Sheet 1