

GEOLOGICAL INVESTIGATION

of

THE JUDY CLAIM GROUP

51° 00' N. - <sup>120°</sup>~~128°~~ 00' W. - SE

8 miles NE of Little Fort, B.C.

92PB  
82MS

for

92P/8E

QUEBEC CARTIER MINING COMPANY

by

Albert F. Reeve, P.Eng.,  
Geological Engineer

July 13 to September 15, 1966

1047

1047

GEOLOGICAL INVESTIGATION

of

THE JUDY CLAIM GROUP

51° 00' N. - 128° 00' W. - SE

8 miles NE of Little Fort, B.C.

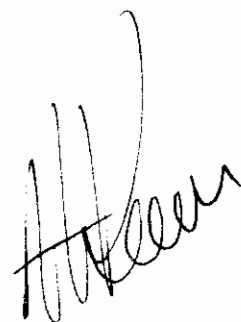
f o r

QUEBEC CARTIER MINING COMPANY

b y

Albert F. Reeve, P.Eng.,

Geological Engineer



July 13 to September 15, 1966



## C O N T E N T S

	<u>Page</u>
INTRODUCTION . . . . .	1
PROPERTY . . . . .	2
LOCATION . . . . .	3
ACCESS . . . . .	3
WORK DONE . . . . .	4
(a) Method . . . . .	4
(b) Personnel . . . . .	4
GEOLOGY . . . . .	5
(a) Regional . . . . .	5
(b) Local . . . . .	5
MINERALIZATION . . . . .	7
SUMMARY & CONCLUSIONS . . . . .	8
RECOMMENDATIONS . . . . .	9
APPENDIX "A" - Estimated Statement of Expenditures	
APPENDIX "B" - Statutory Declaration in Support of Statement of Expenditures	
APPENDIX "C" - Certificate of the Writer's qualification	
APPENDIX "D" - Maps - 1. Location Map # 1	1" = 4 mi.
2. Geology Plan # 2	1" = 400 ft.

## INTRODUCTION

This report describes the geology and mineral occurrences of the Judy claim group. It is based on a programme of preliminary geological mapping carried out in July and September of 1966. It is submitted to the B.C. Department of Mines and Petroleum Resources to satisfy assessment work requirements on the 12 claims for a period of 1 year from July 13, 1967.

Maps and author's certificate of qualification are appended.

PROPERTY

<u>Claim Name</u>	<u>Record No.</u>	<u>Record Date</u>
July No. 1	58481	
to No. 12	to	July 13, 1966
incl.	58492	

Owner

Albert F. Reeve,  
400, 837 West Hastings St.,  
Vancouver 1, B.C.

FMC #49221 (1966-67)

FMC #58116 (1967-68)

LOCATION

(see Fig.1)

The Judy claims are situated on the north part of the summit of Baldy Mountain, 6500' to 7500' ASL, in the Kamloops Mining Division, 8 miles NE of the Community of Littlefort, B.C.

ACCESS

Littlefort is reached by travelling north from Kamloops about 60 miles on Highway #5. The property is about 20 road miles ENE of Littlefort via the ferry crossing, Dunn Lake and the old Windpass gold mine.

Early access to the property was by helicopter. Later in the season a 4-wheel drive truck was used.

WORK DONE

(see Fig.2)

(a) Method

The bedrock geology of the Judy claim group and adjacent areas was mapped at 1" = 400' scale. Details included mineral occurrences claim posts and old workings.

Mapping control was obtained from published 1,500,000 topographical data expanded to 1" = 400', and pace-compass traverses.

Expanded air photographs (1" = 1000' approx.) were used for additional topographic control and structural interpretation.

(b) Personnel

The following persons carried out this work between July 13 and September 15.:

Jeffery M. White 1320 E. Maynard Drive, St. Paul, Minn., U.S.A.	-	Mining Engineer
Norman K. Lockwood 12894 - 109th Ave. North, Surrey, B.C.	-	Geology student
Albert F. Reeve, P.Eng. 400, 837 W. Hastings St., Vancouver 1, B.C.	-	Geological Engineer

GEOLOGY

(a) Regional

The property lies in a belt of Mesozoic volcanics known locally as the Fennel formation. These rocks are cut by early Mesozoic plutonic masses and are locally overlain unconformably by Cenozoic lava flows.

The regional geology is described on G.S.C. Map #3-1966 by Dr. R.B. Campbell.

(b) Local (see Fig.2)

The property is principally underlain by intermediate volcanic rocks of the Fennel formation on the west margin of a large Monzonite batholith. A quartz monzonite stock about a mile in diameter occurs immediately north of the claims.

The volcanics are composed of massive flows which have been only slightly tilted by folding. These are divided into 2 units:

- a) coarse fresh-looking basalt, and
- b) an older sequence of siliceous "greenstone" (andesite dacite) which contains disseminated



GEOLOGY (cont'd.)

(b) Local (cont'd.)

pyrrhotite and pyrite which produces a reddish-brown gossan where it has been exposed beneath the younger basalt horizon.

The intrusive rocks are mafic poor and unaltered. Occasional quartz veins with pink-stained walls occupy some joint planes. The contact with adjacent volcanic formations is quite sharp and unaltered. There appear to be two pre intrusive fracture or fault structures traversing the property in NW and NE directions.

No significant displacement was observed along these "breaks".

### MINERALIZATION

Molybdenite was observed at two locations on the Judy group.

A cliff edge outcrop on Judy Claim #4 is mineralized with molybdenite. Dacite flow rock contains several quartz and aplite veinlets 1" to 4" in width, carrying irregular coarse flakes of  $\text{MoS}_2$ . The veins are steeply dipping and strike about EW. The mineralized outcrop is about 10' in diameter. Possible westward extensions are covered by overburden on the flat hilltop and the veins appear to terminate on the cliff face westward. A number of barren quartz veins were seen in the same general area.

Quartz and intrusive rock rubble is mineralized with  $\text{MoS}_2$ , chalcopyrite and magnetite in the vicinity of several old trenches on Judy #11 and #12.

On line claim #5, immediately SW,  $\text{MoS}_2$  bearing quartz veinlets occur in massive dacite at three locations.

### MINERALIZATION

Molybdenite was observed at two locations on the Judy group.

A cliff edge outcrop on Judy Claim #4 is mineralized with molybdenite. Dacite flow rock contains several quartz and aplite veinlets 1" to 4" in width, carrying irregular coarse flakes of  $\text{MoS}_2$ . The veins are steeply dipping and strike about EW. The mineralized outcrop is about 10' in diameter. Possible westward extensions are covered by overburden on the flat hilltop and the veins appear to terminate on the cliff face westward. A number of barren quartz veins were seen in the same general area.

Quartz and intrusive rock rubble is mineralized with  $\text{MoS}_2$ , chalcopyrite and magnetite in the vicinity of several old trenches on Judy #11 and #12.

On line claim #5, immediately SW,  $\text{MoS}_2$  bearing quartz veinlets occur in massive dacite at three locations.

SUMMARY & CONCLUSIONS

1. The Judy claims are located on Baldy Mountain in the Kamloops Mining Division. The property is underlain by Triassic volcanic rocks on the western edge of a large monzonite plutonic mass.
2. There are two minor occurrences of  $\text{MoS}_2$  on the property and three similar mineralized localities on an adjacent property.
3. The showings, individually and collectively, are not impressive in terms of economic potential, nor are they characteristic of known productive  $\text{MoS}_2$  environments.
4. There is some possibility that additional  $\text{MoS}_2$  mineralization does occur in the area known -
  - a) on the rolling top of Baldy Mountain which is largely drift covered, and
  - b) along the canyon wall on the SW parts of Judy #2, #4 and #6, which is very rugged and not thoroughly prospected.

RECOMMENDATIONS

It is recommended that a programme of soil sampling and detailed prospecting be carried out to investigate the possibilities suggested in (4) above.

If the results of this work are negative the property may be allowed to lapse.



Respectfully submitted,

A handwritten signature in cursive script, appearing to read "A. F. Reeve".

---

Albert F. Reeve, P.Eng.,  
Geological Engineer

July 30, 1967.

APPENDIX "A"

STATEMENT OF ESTIMATED EXPENDITURES

STATEMENT OF ESTIMATED EXPENDITURESJUDY CLAIM GROUP

Geological Mapping, 1966 - Judy Group

1. Salaries & Fees

Mining Engineer 7 days @ \$25	\$175.00	
Geology student 7 days @ \$20	140.00	
Employee Benefits @ 15%	40.00	
Field supervision and report compilation -		
Geological Engineer 3 days @ \$50	<u>150.00</u>	\$ 505.00

2. Equipment

Helicopter SG-2, 3 hrs. @ \$107.50	322.50	
Truck 200 miles @ 20¢	<u>40.00</u>	362.00

3. Supplies

Food - 14 man-days @ \$4.00	56.00	
Miscellaneous hardware & Supplies	<u>25.00</u>	81.00

4. Travelling

Hotels, meals and fares	-	150.00
-------------------------	---	--------

5. Office

Drafting service - 10 hrs. @ \$3.50	35.00	
Stenographic service - 5 hrs. @ \$4.00	20.00	
Printing, map colouring, photo enlargements and office supplies	<u>75.00</u>	130.00

Total Expenditure - - - - -		<u>\$ 1,228.00</u>
-----------------------------	--	--------------------

APPENDIX "B"

STATUTORY DECLARATION IN SUPPORT OF  
STATEMENT OF EXPENDITURES



CANADA ) IN THE MATTER OF the Statement  
Province of British Columbia ) of Expenditures for geological  
TO WIT: ) mapping of Mineral Claims Judy  
1-12 inclusive in the Kamloops  
Mining Division.

I, ALBERT F. REEVE, Geological Engineer, of 400 - 837  
West Hastings Street, in the City of Vancouver, in the Province  
of British Columbia, DO SOLEMNLY DECLARE:

1. THAT the geological mapping of Mineral Claims Judy  
1-12 inclusive was carried out under my direction.
2. THAT the Statement of Expenditures set out in Appendix  
"A" of my report "Geological Investigation of the  
Judy Claim Group" dated July 13 to September 15, 1966,  
truly represents the amounts expended on geological  
mapping of the said claim group.

AND I make this solemn Declaration conscientiously believing it  
to be true, and knowing that it is of the same force and effect  
as if made under oath, and by virtue of the Canada Evidence Act.

DECLARED before me at the )  
City of Vancouver, in the )  
Province of British Columbia )  
this 11 day of August )  
A.D. 1967. )  
)  
)  
)  
)  
)  
)  
)  
A Commissioner for taking )  
Affidavits for British Columbia.)



J. T. Lee  
A Commissioner for taking  
Affidavits for British Columbia.)

APPENDIX "C"

CERTIFICATE OF THE WRITER'S QUALIFICATION

CERTIFICATE

I, ALBERT F. REEVE, of Vancouver, B.C.,  
heroby certify that:

1. I am a geological engineer residing at #4, 2475 West 1st Avenue, with an office at 400, 837 West Hastings street.
2. I am a graduate of the Provincial Institute of Mining, Haileybury, Ontario, 1958; and received a Bachelor of Science degree from Michigan College of Mining and Technology, Houghton, Michigan, 1961.
3. I am a certified member of the associations of Professional Engineers in the provinces of Ontario and British Columbia.
4. I am the author of this report.
5. I supervised geological mapping of the Judy claim group which is described herein.



Signed

A handwritten signature in black ink, appearing to read "A. F. Reeve", written over a horizontal line.

Albert F. Reeve, P.Eng.,  
Geological Engineer

July 30, 1967.

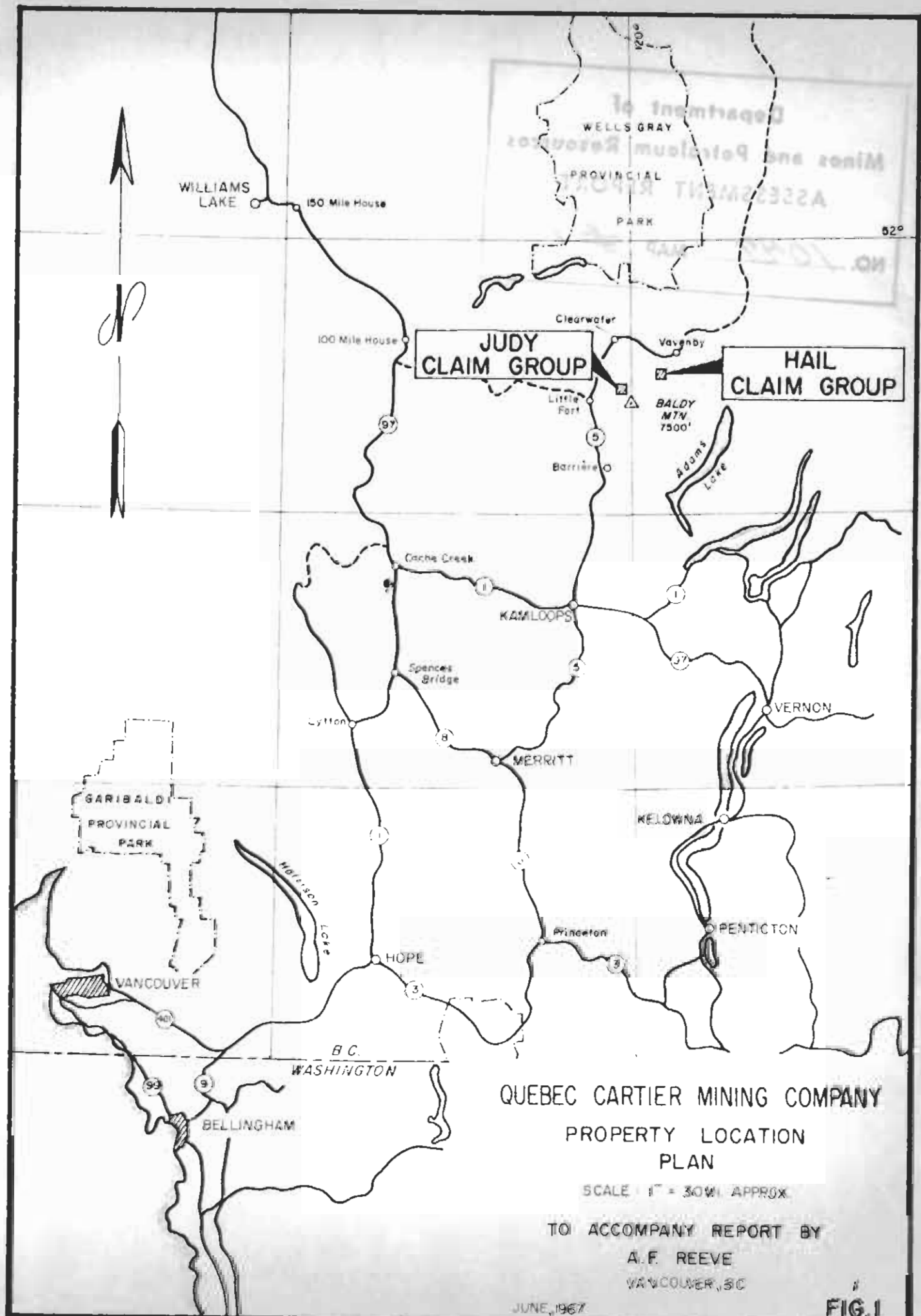
Vancouver, B.C.

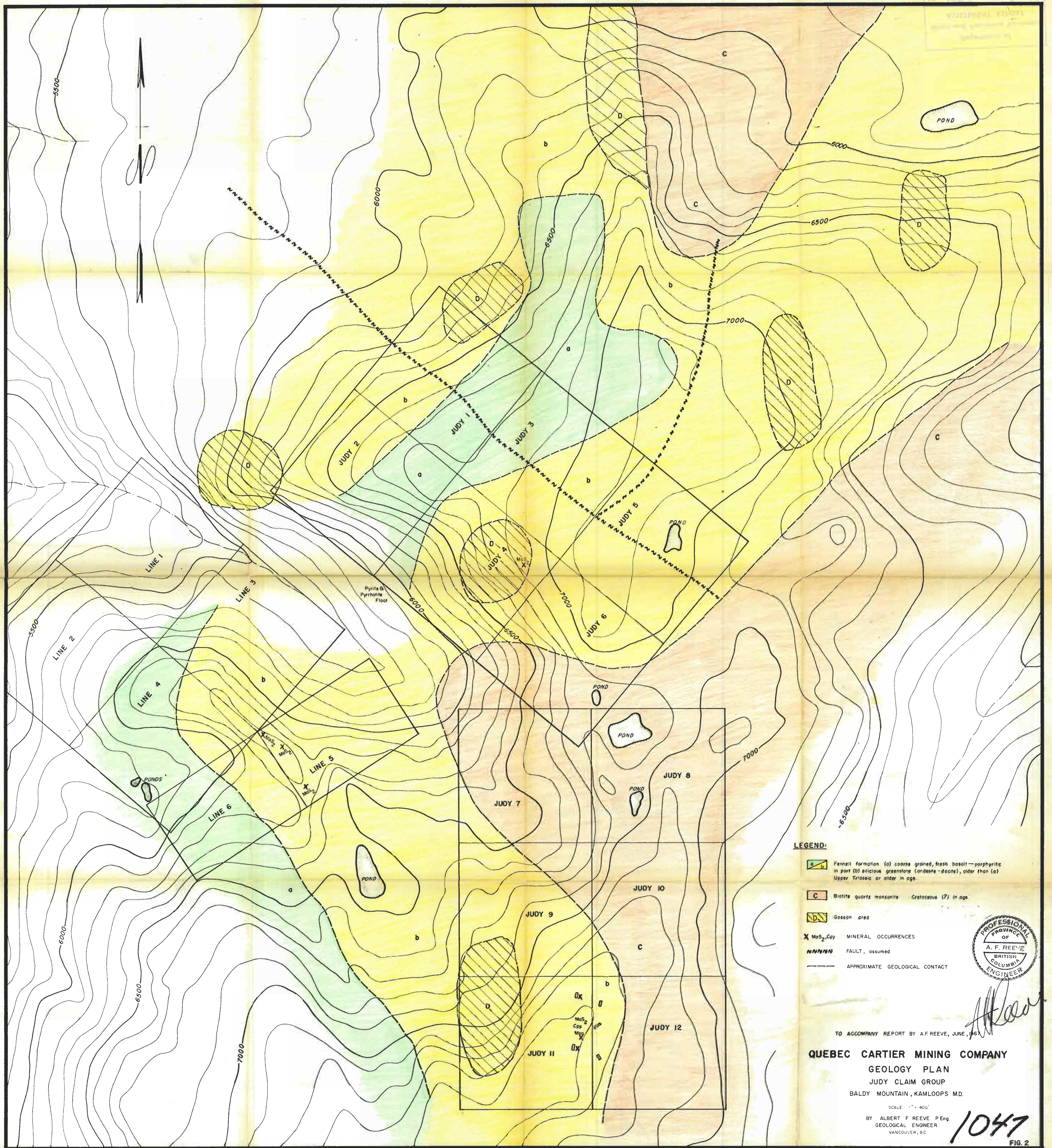
APPENDIX "B"

MAPS:

Fig. 1. Location Map 1" = 4 mi.

2. Geology Plan 1" = 400 ft.





**LEGEND:**

- Fennell formation (a) coarse grained, fresh basalt—porphyritic in part (b) silicious greenstone (andesite-dacite), older than (a) Upper Triassic or older in age.
- Biotite quartz monzonite - Cretaceous (?) in age.
- Gosson ore
- X  $MoS_2$ ,  $Cpy$  MINERAL OCCURRENCES
- FAULT, assumed
- APPROXIMATE GEOLOGICAL CONTACT



TO ACCOMPANY REPORT BY A.F. REEVE, JUNE, 1967

**QUEBEC CARTIER MINING COMPANY**  
**GEOLOGY PLAN**  
**JUDY CLAIM GROUP**  
**BALDY MOUNTAIN, KAMLOOPS M.D.**

SCALE: 1" = 400'  
 BY ALBERT F. REEVE P.Eng.  
 GEOLOGICAL ENGINEER  
 VANCOUVER, B.C.

**1047**

FIG. 2