

Summary Report

GEOLOGICAL, GEOCHEMICAL
& GEOPHYSICAL INVESTIGATIONS

TOMMY LAKE-PARADISE LAKE PROPERTY

Nicola Mining Division, British Columbia

49° 120' E.

W. M. Sharp, P. Eng., for

CONSOLIDATED SKEENA MINES LTD (N. P. L.)

Vancouver, B. C.

July 25, 1968

Field Work done between September 4, 1967 -

June 26, 1968

92H/16W

TOE, MAL CHAL, ECHO, & BOOT Groups

92H-16/16

1586

1586

SUMMARY REPORT

on

GEOLOGICAL, GEOCHEMICAL, AND GEOPHYSICAL INVESTIGATIONS

of the

TOMMY LAKE - PARADISE LAKE PROPERTY,
NICOLA MINING DIVISION, BRITISH COLUMBIA

49°, 120° S. E.

July 25, 1968

by

W. M. Sharp, P. Eng., Consulting Geological Engineer,

for

CONSOLIDATED SKEENA MINES LTD. (N. P. L.)

Vancouver, B. C.

Work done between September 1, 1967-June 26, 1968

TABLE OF CONTENTS

	Page
INTRODUCTION	1
PROPERTY	
A. Location and Accessibility	1
B. Claims	2
SUMMARY OF EXPLORATION EXPENSE	
A. Toe and Boot Claims	3
B. Malachite-Chalcocite Group	3
C. Echo Group	4
GEOLOGY	5
GEOCHEMICAL SURVEYS	6
MAGNETIC SURVEYS	7
SUMMARY AND CONCLUSIONS	8

REPORT DRAWINGS:

A. Bound with Text:

Fig. 1 - Index Map ; scale 1 inch = 2 miles # 1

Fig. 2 - Claims and General Geology; scale 1 inch = 1/2 mile # 2

B. In Pocket:

Dwg. 3R-1; Composite Plan - Geology, Geochemical # 3
Survey, Drilling and Trenching; scale
1" = 1000'

Dwg. 2-A; Toe Group, Detailed Geochemical Survey, scale 1" # 4
= 500'

Dwg. 4-B; Geochemical Survey - Total Hg/Mo and Preliminary # 5
Interpretation Cu Soil Anomalies, 1" = 1000'

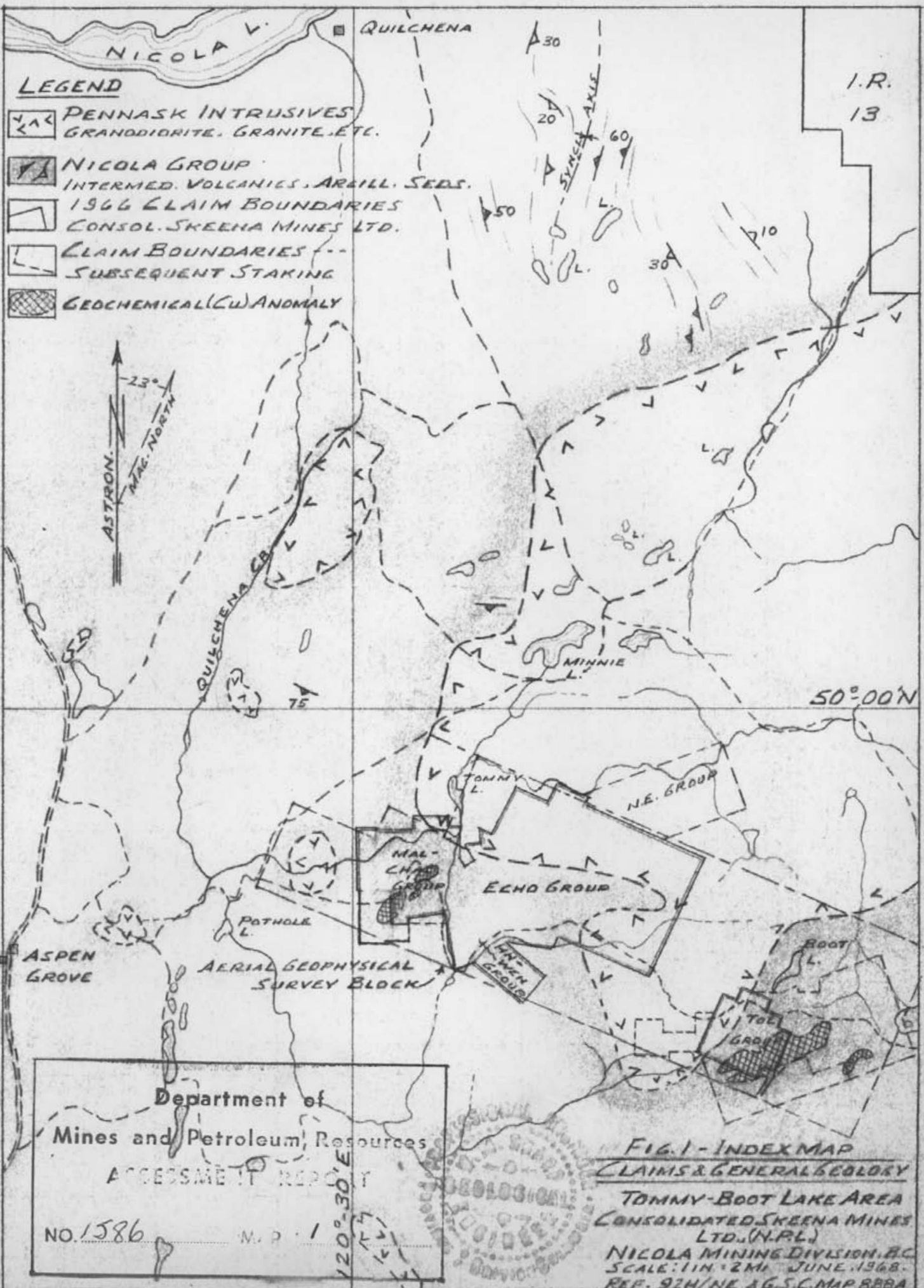
Dwg. 2-M; Toe Group, Magnetic Survey - Sheet I, 1" = 500' # 6

Dwg. 2-B; Toe Group, Magnetic Survey - Sheet II, #7
1" = 500'

Dwg. 1-A; Mal-Chal Group, Geochemical Total Copper; #8
1" = 400'

1-B; Mal-Chal Group, Magnetic Survey; 1" = 400' #9

I.R.
13



Department of
Mines and Petroleum Resources
ASSESSMENT REPORT
NO. 1586 M.P. 1
120°30'E

FIG. 1 - INDEX MAP
CLAIMS & GENERAL GEOLOGY
TOMMY-BOOT LAKE AREA
CONSOLIDATED SKEENA MINES LTD. (N.P.L.)
NICOLA MINING DIVISION, B.C.
SCALE: 1 IN. = 2 MI. JUNE, 1968.
REF. 92H/NK AG.S.C.M.P.B.B.R.A.
W.M. SHARP, P. ENG.

INTRODUCTION

Consolidated Skeena Mines Ltd. commenced exploration in this map area, during the spring of 1961, on the original HN-WEN claim group. In the fall of 1961 the Company acquired the Malachite-Chalcocite claim group, southwest of Tommy Lake, and carried out geological, and preliminary geochemical and geophysical surveys of this ground until the fall of 1962. Work done at this time was sufficient to maintain the claims in good standing for the following 5 to 8 years. The Company recommenced exploration of the general area during the summer of 1966, at which time it staked the Echo claim block, and carried out reconnaissance geochemical-geological investigations on this ground. Extensions of this soil-sampling program revealed a separate anomalous area at some 2 miles southeast of the Echo claim group, and the initial 23 claim Toe group was located on it. Since October, 1966 the Mal-Chal, Echo, and Toe groups have been expanded by additional staking - as indicated by concurrent geochemical exploration results. In addition, airborne and ground geophysical surveys have been carried out over the general property and locally-significant areas. The writer has provided general field and office engineering direction on the foregoing work; Mr. John E. White, has carried out and supervised actual field operations.

This report summarizes the results of field exploration performed between August 31, 1967 and June 30, 1968. As further, relatively more detailed exploration within the general property is contemplated, this summary is presented as an interim report only. It also augments, and/or replaces earlier interpretations and conclusions presented in the writer's April 28, 1967 and August 31, 1967 reports.

PROPERTY

A. Location and Accessibility

This is illustrated by report Figures 1 and 2.

The Mal-Chal, Echo, and HN-WEN claim groups lie some 8 miles due east of the Village of Aspen Grove - the latter being situated on the Princeton-Merritt highway. The Toe and Boot groups,

lying some 2 miles southeast of the Echo claim block, comprise a 2 mile by 4 mile block extending in a W.S.W. direction from a point closely west of the north end of Paradise Lake. Forestry Access Road 5116 and several branch logging roads provide good access to all claim groups.

B. Claims

These are shown on report Figure 2.

The Echo (incl. N. E. block) group comprises Echo No's 1-104, inclusive and Echo No's 1-6 Fractions, inclusive, N. E. 1-26, incl. and 4 fractions.

³⁵
~~33~~ The Chalcocite-Malachite (or Mal-Chal) group comprises
Wm-9 full claims and 1 fraction.

The HN-WEN group comprises HN1-4, incl. and WEN 1-4, inclusive.

The Toe group comprises Toe No's 1-81, inclusive, and Toe 1-5 Fractions, inclusive.

The Boot claim block comprises Boot No's 1-10, inclusive, and is situated at about one-half mile north of the Toe claim block.

All claims are, currently, in good standing.

SUMMARY OF EXPLORATION EXPENSE

A.	TOE and BOOT Claims: Sept 1, 1967-June 30, 1968:	
	Wages and Salaries: Grid-line prep.	\$1,577.78
	Geochem. sampl.	1,772.96
	Magnetic survey	1,247.20
		<hr/>
		\$4,597.20
	Camp costs, room and board	902.10
	Supplies and equipment	170.58
	Assay Costs, soil, silt, rock samples	1,547.37
	Truck operation and maintenance, rentals	361.12
	Snowmobile and other travel costs	82.36
		<hr/>
	Total Expenditures	\$7,661.47
B.	MALACHITE-CHALCOCITE Claims: Sept 1, 1967-June 30, 1968:	
	Wages and Salaries: Grid-line prep.	\$ 336.85 (Consol. Skeena)
	Geochem. sampl.	1,141.65 (" ")
		29.70 (" ")
		215.00 (Cordilleran
		Exploration Ltd)
	Magnetic survey	562.50 (Consol. Skeena)
		<hr/>
	Total Wages and Salaries	\$2,285.70
	Camp costs, room and board	53.59
	Supplies and equipment	170.58
	Assay Costs	1,023.62
	Truck operation and maintenance	118.00
	Snowmobile and other travel costs	82.36
		<hr/>
	Total Expenditures	\$3,733.85

C. ECHO Claims:

Wages and Salaries: Geochem & Control line	\$1, 320. 25 (Consol. Skeena) 860. 00 (Cordilleran)
Total Wages and Salaries	\$2, 180. 25
Camp costs	160. 70
Supplies and equipment	170. 58
Assay Costs	1, 424. 12
Truck operation and maintenance	271. 40
Total Expenditures	<u>4, 207. 05</u>

GEOLOGY

This section is supplemented by Figures 1 and 2; Dwg. 3-R1 and 4-B.

All of the Company's claims lie over the general east-west trending contact zone of the Pennask 'granodioritic' batholith and the southerly-adjacent Nicola volcanic group; the latter rocks occur as a regional-scale, westerly-opening embayment within major units of the Princeton and Pennask batholiths. Locally, the Nicola formations are strongly warped and sheared along trends which are notably divergent to general northerly trend of these rocks. The resulting transverse structural panels occur marginally to, and within interior areas of the embayment, and appear to furnish a major structural control for the district Cu-Mo mineralization.

The south contact of the Pennask 'granodiorite' body generally traverses northerly portions of the Mal-Chal, Echo, and Toe claim groups; however, a distinct southerly bulge has been noted between the easterly Echo and westerly Toe claims. The major Toe geochemically-anomalous (Cu) zones lie closely east of this 'bulge'.

Nicola rocks underlying the general claims areas comprise augite andesite (locally basaltic) flows and fragmentals, feldspar porphyries, argillites, and various (limey) gradations of these. Intrusive rocks, where infrequently exposed, are mainly quartz diorite and/or closely affiliated types. The aforementioned bulge, or prong appears to terminate at the presently-inferred E. N. E. - trending 'Wart' lineament.

The writer estimates an average 5 percent outcrop over the claims groups. However, several occurrences of pyrite-magnetite-chalcopyrite mineralization - with quartz-calcite veins, seams, or as disseminations - have been observed in outcropping, or trenched bedrock exposures. A significant body of magnetite-chalcopyrite mineralization within the Mal-Chal group was delineated by trenching and drilling performed during 1962.

Both intrusive and volcanic rock types have, in places, been notably altered by regional metamorphic, contact-metasomatic, and hydrothermal agencies. The volcanics show varying degrees of propylitic alteration. A more intense 'skarn-type' alteration has been noted within the centrally-situated Mal and Chal claims; the more significant magnetite-chalcopyrite dispersions tend to be associated with these skarn occurrences.

Only minor areas of relatively weakly altered bedrock have been noted within the Echo and HN-WEN claim groups. This usually consists of mild kaolinization-silicification of the quartz diorites and mild propylitization-chloritization of the volcanic rocks.

An appreciable area of Nicola rocks within the Toe group (Toe's 27, 28, 29, 51, 54, 55) has been thermally-metasomatically dioritized; the resulting metadiorites frequently contain significant amounts of disseminated magnetite and/or pyrite with, locally, minor disseminated chalcopyrite.

The recent geochemical and geophysical surveys have been aimed to detect similar, but more extensive mineral occurrences.

GEOCHEMICAL SURVEYS

The following text is supplemented by Drawings 2A and 4-B (Toe and Boot claims), Dwg. 1-A (Mal-Chal claims), and Dwg 3-R1 (Echo).

Survey grid-lines within the Echo, Toe, and Boot claims areas follow existing claim lines, or lines intermediate to these. These lines were blazed and flagged; soil sample stations are flagged or picketed, and identified via reference to the grid terminology. Normal sample spacing within the Toe group is 200 feet; within the Echo block, it is 500 and 200 feet.

Within the Mal-Chal group the survey grid comprises E-W lines at 400 foot N-S intervals on main control lines.

The majority of samples, from pits or auger holes, were taken from the "B" soil horizon; within anomalous areas, these were supplemented by profile ("C"-zone) samples. The latter provided samples for the determination of possible associated mercury.

All samples were tested for parts per million total copper; a minor number were tested for total molybdenum, and intermittent samples, or special groups were tested for total mercury-reporting parts per billion present. All samples were laboratory-tested - mainly by hot-acid extraction and atomic absorption methods; the earlier field samples were tested for cold-soluble copper, via the rubeanic-spot method. The laboratory data have been compiled on the accompanying maps, and interpretations also made on them.

The surveys have delineated several geochemically anomalous areas.

1. Mal-Chal claims: Extensive, but weak Cu soil anomalies occur on Malachite 7 and 9 and Malachite No. 1 claims. These are affiliated with known bedrock mineralization, but require further evaluation by profile - sampling and geophysical methods.
2. Echo Claims: Nothing of real significance was delineated by the surveys.
3. Toe and Boot claims: A major Cu anomaly, with a gross strike length of 11,500 feet and average width of 3000 feet has been delineated but not completely evaluated by profiling or other follow-up geochemical methods. Individual soil-samples range from an arbitrary minimum 40 ppm to 735 ppm. A coincident "mercury fringe" suggests a hydrothermal, or local bedrock source for the copper anomaly. Other lesser anomalies have been delineated within the Toe and Boot claims areas; some of these warrant further exploration by geochemical and/or geophysical methods.

MAGNETIC SURVEYS

These are illustrated by Dwg. 1-B (Mal-Chal claims) and Dwgs. 2-M and 2-B (Toe claims).

The surveys were performed on the existing geochemical grid; a Sharpe MF-1 flux gate magnetometer was used. A sufficient number of base-reference stations was established within each survey area for purposes of general standardization and interim diurnal correction. The surveys were carried out during the winter months; therefore, a snowmobile was used for general and local access. This machine gave quick access to grid stations and facilitated frequent check-measurements at base-reference stations.

The magnetic data have been correlated on the accompanying drawings via 500-gamma contours, following the application of a general plus 500-gamma adjustment, to eliminate negative readings. The data are interpreted as follows:

1. Mal-Chal Claim area. The general background is about 650 gammas. A large plus-1000 gamma anomaly centers on Malachite 1 and 2 claims; local 'peaks' range up to 2500 gammas. The center of this anomaly coincides with the known magnetite-copper deposit; hence, extensions

of the general magnetite-skarn zone are indicated. In addition, several other subordinate magnetically-anomalous zones have been indicated - principally within the northerly, or quartz diorite-volcanic contact region of the claim group. The long axes of all anomalies coincide with the local, northerly formational trends.

2. Toe Claim Area

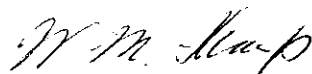
The general background is about 500 gammas. There is very little difference in magnetic intensity over the general survey grid; however, a zone of slightly higher (1500 gammas) magnetic intensity is indicated for the inferred quartz diorite-volcanic contact region within the group. The major geochemically anomalous area apparently coincides with an area of relative magnetic 'lows'. This suggests hydrothermal leaching of the local volcanic assemblage, and/or a general absence of metasomatic magnetite-except within areas fringing the anomaly.

The most prominent feature of the magnetic interpretation is the general E.N.E. 'magnetic grain' of the area - which corresponds with the inferred formational and mineral trends.

SUMMARY AND CONCLUSIONS

The 1967-68 geological-geochemical-geophysical investigation has outlined two major, and several minor potentially mineralized areas - principally within the Malachite-Chalcocite and Toe-Boot claim areas. These are of sufficient interest to warrant further geochemical-geophysical exploration. Geochemical exploration, comprising both soil and silt sampling procedures, appears to be the most effective preliminary exploration method. However, local experience has indicated that preliminary geochemical indications should be evaluated by more detailed geochemical procedures and applicable geophysical methods.

Respectfully submitted,



W. M. Sharp, P. Eng.,

July 25, 1968.

WILLIAM M. SHARP, P. ENG.
CONSULTING GEOLOGICAL ENGINEER

ROOM 1. 425 HOWE STREET
VANCOUVER 1. B.C.

July 25, 1968

President and Directors,
Consolidated Skeena Mines Ltd. (N. P. L.)
First Floor - 1033 West Pender Street,
VANCOUVER 1, B. C.

Attention: Mr. F. A. McGonigle, President

Gentlemen:

The accompanying summary report, "Geological, Geochemical, and Geophysical Investigations of the Tommy Lake-Paradise Lake Property, Nicola Mining Division" has been compiled for submission to the Mining Recorder, Nicola M. D., by Mr. John White; this report comprises the required formal supplement to the Company's application for Certificates of Work, on the basis of the relevant exploration expenses incurred.

This report may also be considered to replace, in part, the writer's earlier reports on the results of more preliminary investigations - the more important of these being the April 28, 1967 and August 31, 1967 reports.

Respectfully submitted,

W. M. Sharp, P. Eng.,

Encls.

EMPLOYEE LIST, to accompany W. M. Sharp P. Eng. Report on
Tommy Lake - Paradise Lake Geochemical, Geophysical Report.

Malachite-Chalcocite Group:

Cordilleran Exploration Employees

23 Sept.- 13 Oct. 1967.	W. Millward	
	M. Reid	\$ 215.00

Consolidated Skeena Mines Ltd. Employees

1 Sept. '67 to 30 June '68	John E. White	968.50
1 Sept. '67 to 1 Feb. '68	G. B. Thompson	689.75
18 Oct. '67 to 8 Dec. '67	M. Reid	167.70
5 Feb. '68 to 24 April '68	R. R. Roberts	244.75
	Total	<u>\$ 2285.70</u>

Toe Group and Boot Group:

Consolidated Skeena Mines Ltd. Employees

As above	John E. White	\$ 2236.50
" "	G. B. Thompson	533.75
" "	R. R. Roberts	691.20
18 Oct. '67 to 24 Nov. '67	H. Krause	659.75
" "	M. Reid	476.00
	Total	<u>\$ 4597.20</u>

Induced Polarization Survey

Consolidated Skeena Mines Ltd. Wages

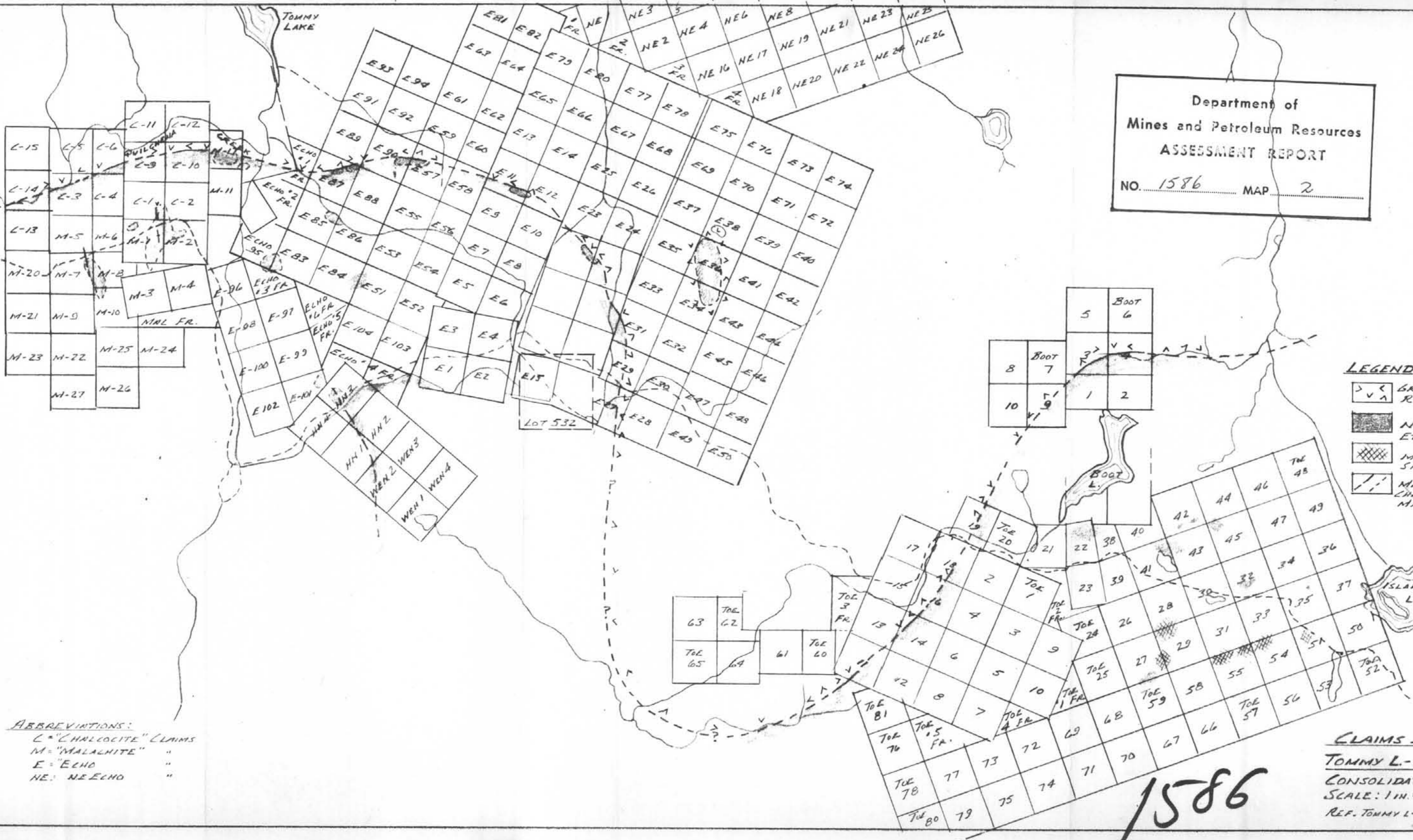
	John E. White	\$ 532.50
14 May '68 to 28 June '68	M. Jamieson	268.25
June 1968	Casual Labour	28.00
	Total	<u>\$ 828.75</u>

#1586

Department of
Mines and Petroleum Resources
ASSESSMENT REPORT
NO. 1586 MAP 2



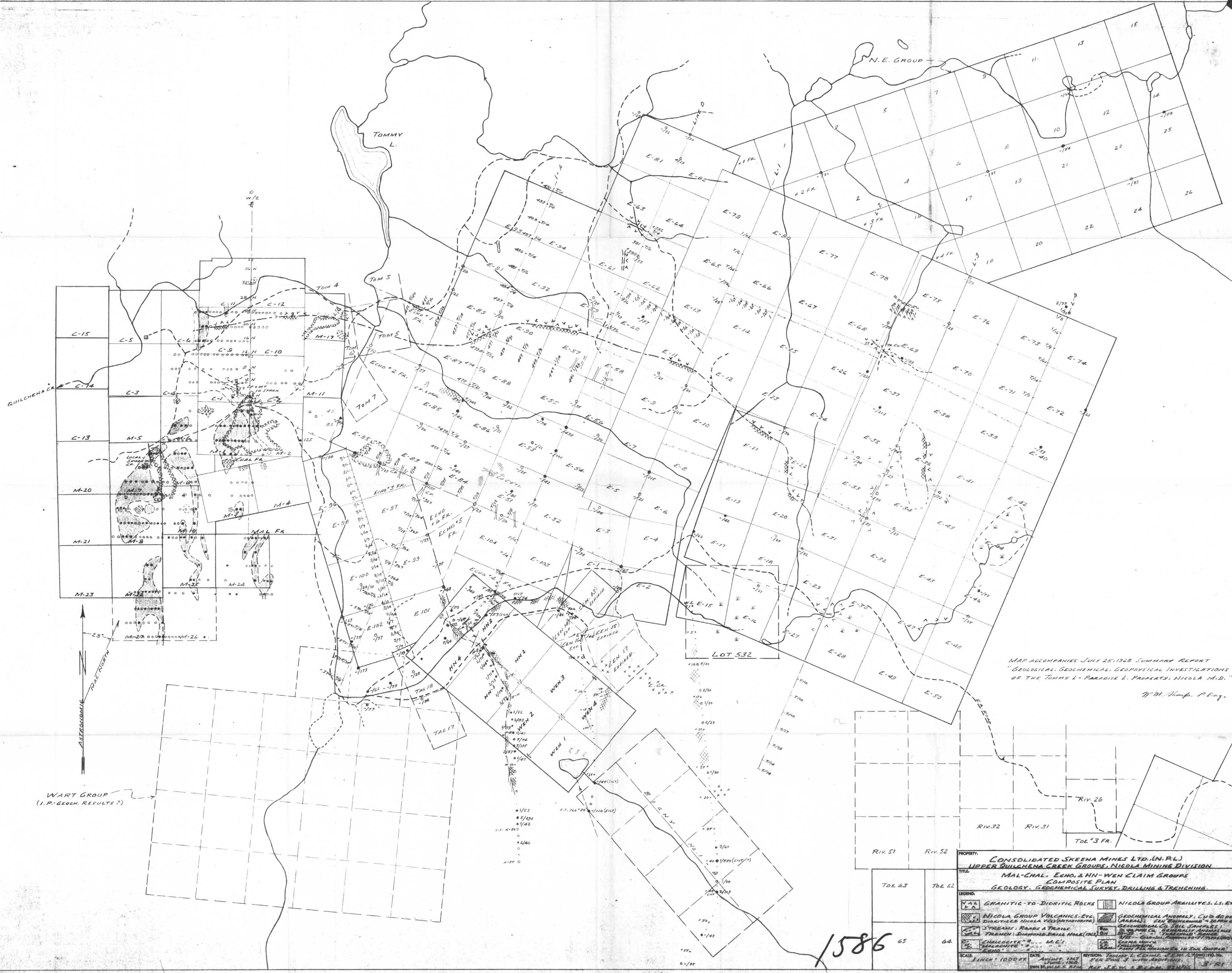
- LEGEND**
- GRANITIC TO DIORITIC ROCKS.
 - NICOLA GROUP VOLCANICS, ETC.
 - METADIORITE, SKARN, & SILICEOUS ALTERATION
 - MINERALIZATION, CHALCOCITE, BORNITE, MAGNETITE



ABBREVIATIONS:
 L = "CHALCOCITE" CLAIMS
 M = "MALACHITE" "
 E = "ECHO" "
 NE = "NEECHO" "

FIG. 2.
CLAIMS AND GENERAL GEOLOGY
TOMMY L. - PARADISE L. PROPERTY
 CONSOLIDATED SKEENAMINES LTD (NPL)
 SCALE: 1 IN. = 1/2 MI. JULY, 1968.
 REF. TOMMY L. - BOOT L. J. WHITE, JUNE 20/67
 DRAWN W. H. SHARP, P.E.M.

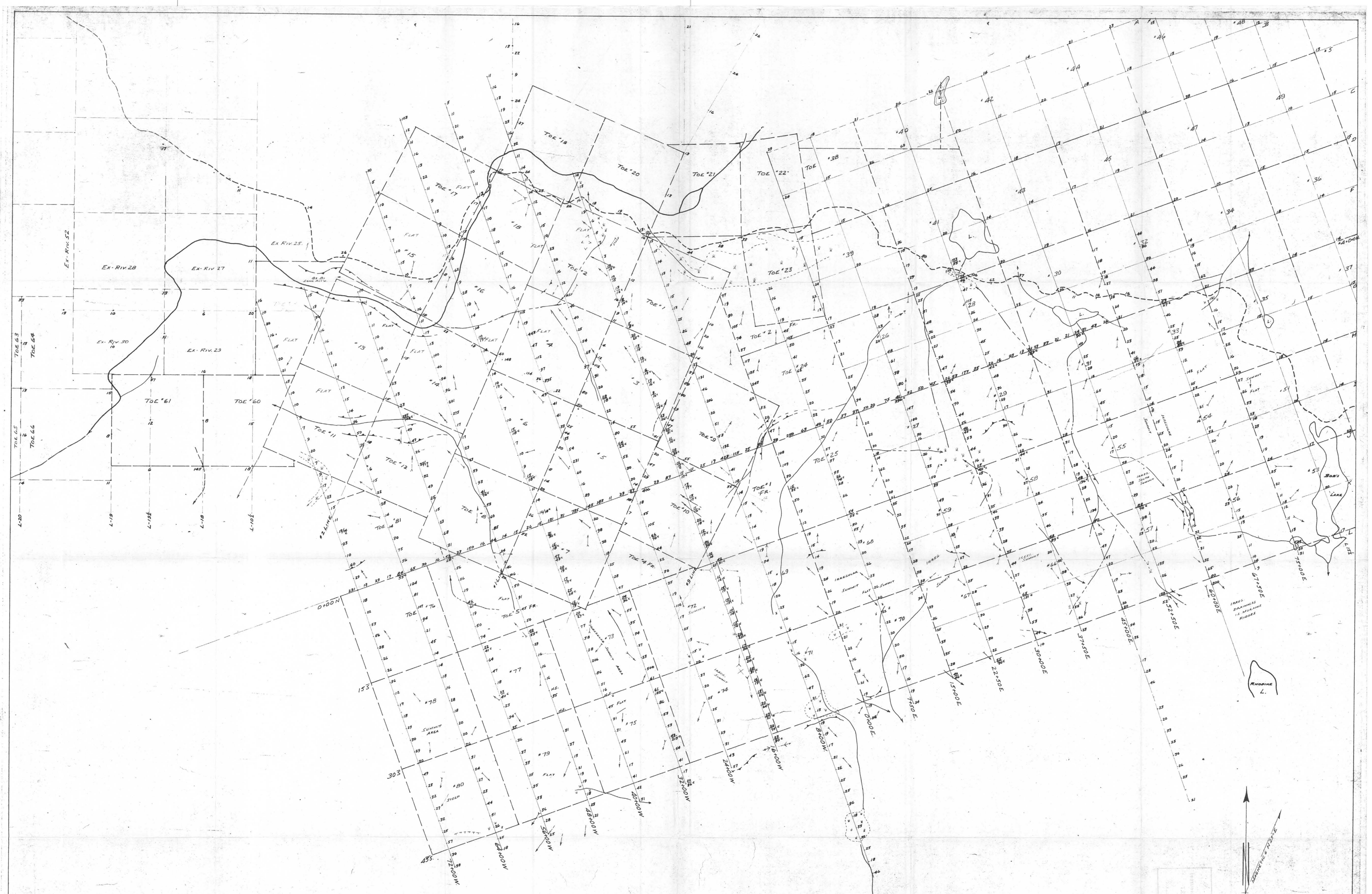
1586



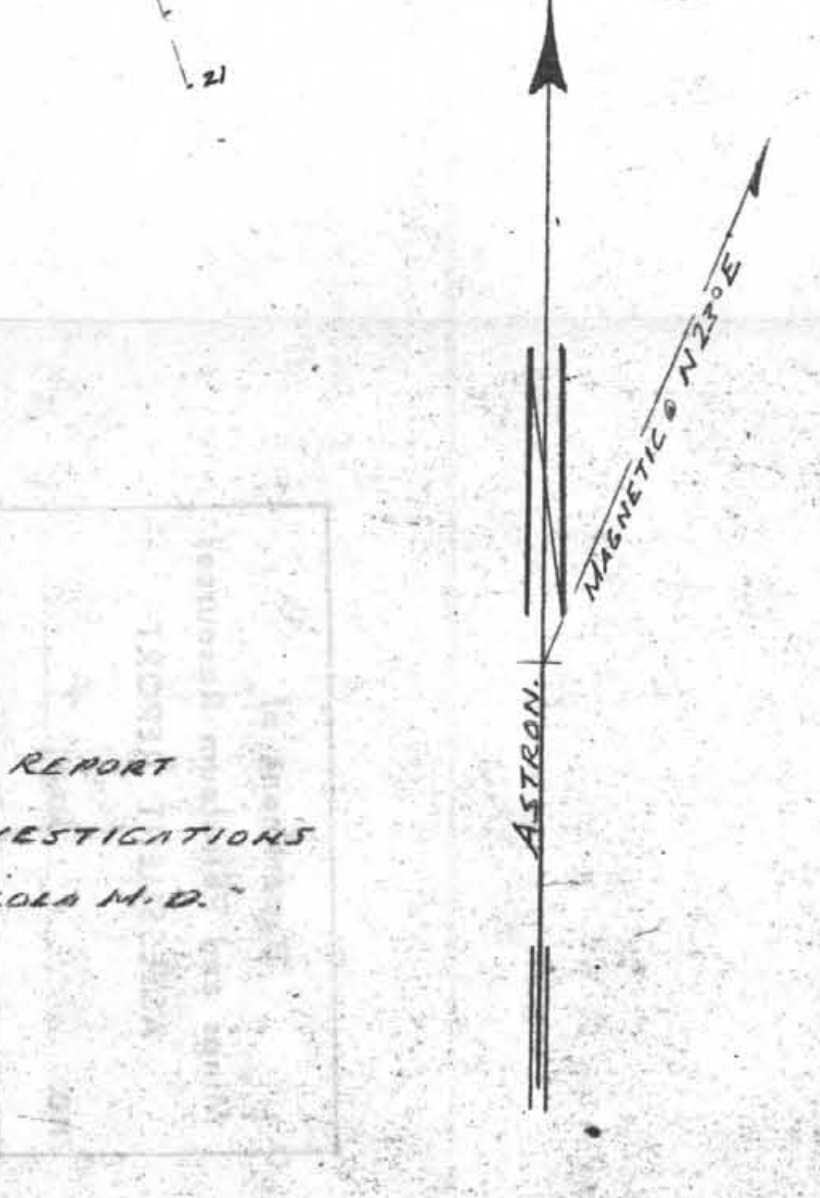
MAP ACCOMPANIES JULY 25, 1968 SUMMARY REPORT
 "GEOLOGICAL, GEOCHEMICAL, GEOPHYSICAL INVESTIGATIONS
 OF THE TOMMY L - PARADISE L. PROPERTY, NICOLA M.D."
 W.M. Kemp, P.Eng.

PROPERTY: CONSOLIDATED SKENA MINES LTD. (IN. P.L.)	
TITLE: UPPER QUILCHENA CREEK GROUPS, NICOLA MINING DIVISION	
MAL-CHAL, ECHO, & HN-WEN CLAIM GROUPS	
COMPOSITE PLAN	
GEOLOGY, GEOCHEMICAL SURVEY, DRILLING & TRENCHING	
LEGEND:	
GRANITIC TO DIORITIC ROCKS	NICOLA GROUP ARGILLITES, LS. ETC.
NICOLA GROUP VOLCANICS, ETC.	GEOCHEMICAL ANALYSES, C.U.S. 40 ppm (AREA), GEN. DRILLING 1/200000
DIORITIC NICOLA VALS (METAMORPHIC)	GEOCHEMICAL SOIL SAMPLES, 1/200000
STREAMS, ROADS & TRAILS	1/200000
TRENCH: DIAMOND DRILL HOLE (100' DR)	1/200000
CHALCOPRITE "A"	1/200000
CHALCOPRITE "B"	1/200000
SCALE: 1 INCH = 1000 FT	DATE: AUGUST 1967
	REVISION: TOMMY L. CLAIMS, ETC. (C.7) DWG/710 No.
	DATE: JUNE 1968
	REF. J.E.W. & B.G.D. 22/11/68 3-11

1586 65



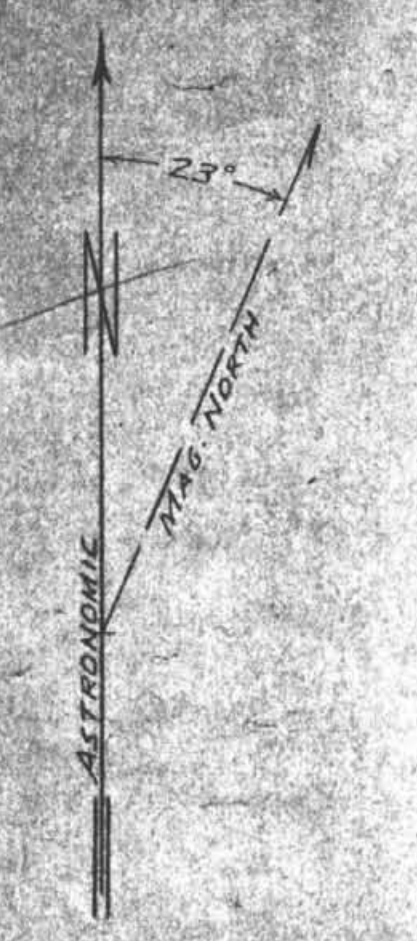
MAP TO ACCOMPANY JULY 25, 1968 SUMMARY REPORT
 "GEOLOGICAL, GEOCHEMICAL, GEOPHYSICAL INVESTIGATIONS
 OF THE TOWNY L. - PARADISE L. PROPERTY, NICOLA M.D."



W. M. SHARP, P. ENG.		CONSULTING GEOLOGICAL ENGINEER 800 - 600 W. HASTINGS ST. VANCOUVER 1, B.C.	
PROPERTY: TOE GROUP PARADISE LANE AREA - NIPERADISING DIVISION BC			
TITLE: DETAILED GEOCHEMICAL SURVEY TOTAL P.P.M. CU IN SOIL			
75	TOTAL P.P.M. CU IN SOIL	ROAD / STREAM OR CANAL	
73	ROAD - SLOPE	GROUND - SLOPE	
72	ROAD - SLOPE	GROUND - SLOPE	
1" = 500'		SCALE: 1" = 500'	

1586

MAP TO ACCOMPANY JULY 25, 1968 SUMMARY REPORT
 "GEOLOGICAL, GEOCHEMICAL, GEOPHYSICAL INVESTIGATIONS
 OF THE TOMMY L. - PARADISE L. PROPERTY, NICOLA M.D."



NOTE: HEAVY DRIFT ALONG AND TO EAST OF CREEK

1586

PROPERTY: CONSOLIDATED SKRENA MINES LTD. (N.R.L.)
 TITLE: TOE GROUP, BOOT LAKE - NICOLA MINING DIVISION
 GEOCHEMICAL SURVEY - - - TOTAL Hg / MO
 AND
 PRELIMINARY INTERPRETATION - GEOCHEMICAL (Cu) SOIL ANOMALIES
 U.S. & NO. SAMPLE

GRANITIC-TO-DIORITIC ROCKS	3/2	TOTAL Hg, P.P.M.
GENERAL NICOLA - EXCLUDING DETAILED MAPPING		TOTAL MO. P.P.M.
STREAMS, ROADS & TRAILS		Hg ≥ 10 TENTATIVELY ANOMALOUS
SOIL-SAMPLE LOCATION		MO ≥ 5
GEN. INCL. "B" & "C" ZONE SAMPLES		TENTATIVE OUTLINE TOTAL-CU ANOMALY PER DATA ON DATE 2-14
		0-15 P.P.M. 20-30 " " 30-40 " " 40-50 " " 50-60 " " 60-70 " " 70-80 " " 80-90 " " 90-100 " "

SCALE: 1 IN. = 1000 FT. DATE: AUGUST, 1967. REVISION: FOR TOE GROUP SOIL SAMPLE LOCATIONS, J.E.H. 1 AUG 1967. REVISED BY: J.E.H. 1 AUG 1967.



O BASE STATIONS
 BY USE OF SINGLING'S
 SW LINE ACCESS TO B.L.
 FIGURES REPRESENT CORRECTED VALUES -
 500 L. HAS BEEN ADDED TO ELIMINATE
 MOST NEGATIVE READINGS

PARADISE LAKE AREA
 TOE GROUP
 MAGNETIC SURVEY SHEET I
 BY J.E. WHITE, MARCH 1968 - INTER SHEET NO. 1

CONSOLIDATED SKEENA MINES LTD. (N.P.L.) PROPERTY: TOE GROUP TITLE: PARADISE LAKE AREA - NICOLA MINING DIVISION, B.C. MAGNETIC SURVEY SHEET I BY J.E. WHITE, MARCH 1968 - INTER SHEET NO. 1			
--- BASE LINES - - - GRID LINES 600 ADJUSTED READINGS SCALE: 1 IN. = 500 FT.	--- DRAINAGE --- SWAMPY AREAS --- TOPOGRAPHIC SURVEY	DATE: APRIL 1968 REVISION:	SHEET NO. 1 OF 2

MAP TO ACCOMPANY JULY 25, 1968 SUMMARY REPORT
 "GEOLOGICAL, GEOCHEMICAL, GEOPHYSICAL INVESTIGATIONS
 OF THE TOWNY L. - PARADISE L. PROPERTY, NICOLA M.D."

J.P. McShane, P.E.

1586



MAP TO ACCOMPANY JULY 25, 1968 SUMMARY REPORT
"GEOLOGICAL-GEOCHEMICAL-GEOPHYSICAL INVESTIGATIONS
OF THE TIMMY L. PARADISE L. PROPERTY, NICOLA M.D.

W. M. Sharp, P. Eng.

W. M. SHARP, P. Eng. CONSULTING GEOLOGICAL ENGINEER VANCOUVER 1, B.C.

CONSOLIDATED SKEENA MINES LTD. (N.P.L.)

PROPERTY: **TOE GROUP**
PARADISE LAKE AREA - NICOLA MINING DIVISION, B.C.

TITLE: **MAGNETIC SURVEY - SHEET II**
BY J.E. WHITE, MARCH, 1968; INSTR. SHARPEME-1

LEGEND:
1000 GAMMA CONTOUR
500 GAMMA CONTOUR
100 GAMMA CONTOUR
500 GAMMA CONTOUR
1000 GAMMA CONTOUR
10000 FT. SCALE
DATE: APRIL, 1968
1 IN. = 500 FT. DRAWN BY J.E.W. CHECKED BY W.M.S. P. Eng.

SWAMP OR MARSH
STREAM W/ FLOW DIRECTION
FORESTRY ACCESS RD. 5 IN.
R.R. 2" W/ 12" CENTER TO CENTER
FILE: 10000
DATE: APRIL, 1968
DRAWN BY: J.E.W. CHECKED BY: W.M.S. P. Eng.

1586



MAD ACCOMPANIES JULY 25, 1968 SUMMARY REPORT
 GEOLOGICAL, GEOPHYSICAL, GEOCHEMICAL INVESTIGATIONS
 OF THE TOMMY LAKE - PARADISE LAKE AREA, NICOLA M.D.
 W. M. Sharp, P. Eng.

W. M. SHARP, P. Eng. CONSULTING GEOLOGICAL ENGINEER
 808 - 900 W. HASTINGS ST., VANCOUVER 1, B.C.

CONSOLIDATED SKEENA MINES LTD. (N.R.L.)

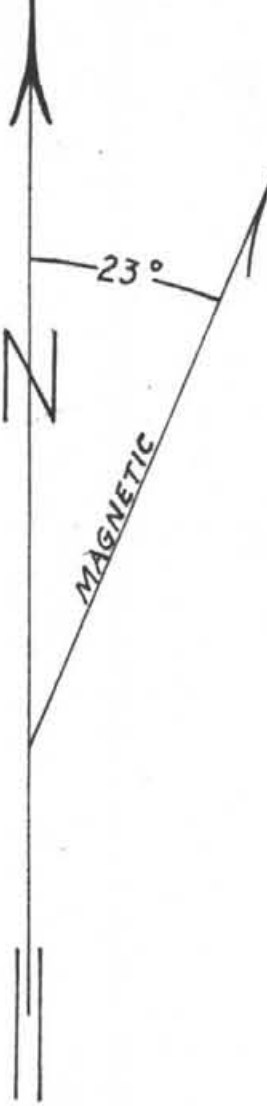
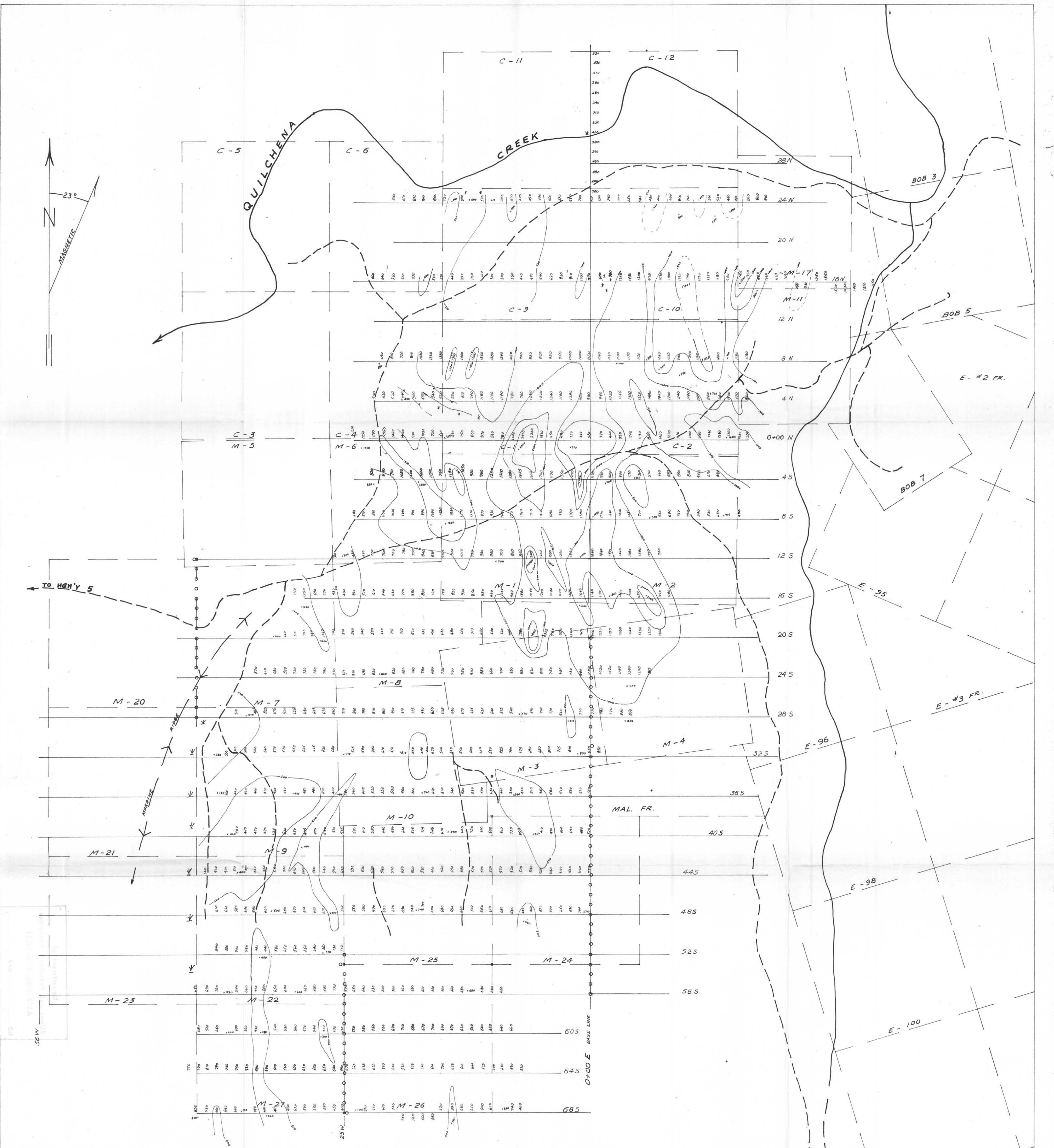
PROPERTY: **MAL-CHAL GROUP**
 TOMMY LAKE AREA - NICOLA MINING DIVISION, B.C.

TITLE: **GEOCHEMICAL SOIL SURVEY**
- TOTAL COPPER -

LEGEND:
 50 TOTAL GEOCHEM. COPPER IN PARTS PER BILLION (P.P.B.)
 10 TOTAL GEOCHEM. ARSENIC IN PARTS PER BILLION (P.P.B.)
 50 CALIBRATION POINTS - 500 P.P.M. Cu
 ROAD, DIRT OR GRAVEL
 STREAM - SHOWING FLOW DIRECTION
 MAL-CHAL GROUP
 REG. J. S. WATSON DIV. NO. 174
 SURVEY & MAP DATED APRIL 1968

SCALE: 1 IN. = 400 FT.
 DATE: APRIL 1968
 DRAWN BY: W.M.S.

1586



W. M. SHARP, P.Eng. CONSULTING GEOLOGICAL ENGINEER 808 - 900 W. HASTINGS ST., VANCOUVER 1, B.C.		
CONSOLIDATED SKEENA MINES LTD. (N.P.L.)		
PROPERTY:	MAL-CHAL GROUP	
TITLE:	MAGNETIC SURVEY	
LEGEND:	<input type="checkbox"/> BASE-REF. STATIONS <input type="checkbox"/> SURVEY GRID-LINE <input type="checkbox"/> MAGNETIC CONTOURS @ 500 Y INTERVALS	
SCALE:	DATE: APRIL 1968	REF. MAP: MAGNETIC SURVEY, 1-5
1 IN. = 400 FT.	DWN BY: J.B.W.	DWG./FIG. No. 1-5
CHECKED BY: W.M. Sharp, P.Eng.		

NOTE: FIGURES ARE ADJUSTED READINGS, WITH 500 GAMMAS (G) ADDED TO ELIMINATE NEG. READINGS.

BASE-REF. STATIONS WERE LOCATED FOR QUICK ACCESS BY SNOWMOBILE AND MINIMUM TIME INTERVALS BETWEEN CHECK OBSERVATIONS.

MAP ACCOMPANIES JULY 25, 1968 SUMMARY REPORT GEOLOGICAL, GEOPHYSICAL, GEOCHEMICAL INVESTIGATIONS OF THE TOMMY L-PARADISE L. AREA, NICOLA M.D.

W.M. Sharp, P.Eng.

1586

FORESTRY ACCESS ROAD # 5116 TO PARADISE LAKE