

GEOCHEMICAL SOIL SURVEY REPORT

by R.E. Anderson, P.ENG.

Banner #1-8 incl., 10, 12, 14 & 16 MC's
Taseko Lake Area, B.C. 920-4/8
Clinton Mining Division

Lat. $51^{\circ}15'$

Long. $123^{\circ}33'$

OWNER: GETHEX EXPLORATION LTD.
WORK DONE - MID-MAY - JULY 1965

16091

1606

S U M M A R Y R E P O R T

G E O C H E M I C A L S O I L S U R V E Y P R O G R A M

B A N N E R M I N E R A L C L A I M S

T A S E K O L A K E A R E A , B . C .

C L I N T O N M I N I N G D I V I S I O N

BY

R.E. ANDERSON, P.ENG.

JULY, 1968

T A B L E O F C O N T E N T S

	<u>Page</u>
INTRODUCTION	1
LOCATION AND ACCESSIBILITY	1
GEOLOGY	2
SURVEY GRID	3
SAMPLING PROCEDURE	3
STREAM SEDIMENT SURVEY	3
DISCUSSION OF RESULTS	4

APPENDIX

- (1) SCHEDULE OF MINERAL CLAIMS
- (2) AFFIDAVIT OF EXPENDITURES

ENCLOSURES

- Fig. #1 - TOPOGRAPHIC MAP SHOWING SURVEY GRID
AND CLAIM LOCATIONS
Scale 1" - 500'
- Fig. #2 - MINERAL CLAIM MAP
Scale 1" - 2500' #2
- Fig. #3 - SURVEY GRID (Values ppm Cu.)
Scale 1" - 500' #3
- Fig. #4 - SURVEY GRID (Color Code)
Scale 1" - 500' #4
- Fig. #5 - STREAM SEDIMENT SAMPLES
Scale 1" - 500' #5

SUMMARY REPORT
GEOCHEMICAL SOIL SURVEY PROGRAM
BANNER MINERAL CLAIMS
CLINTON MINING DIVISION

INTRODUCTION

Bethex Explorations Ltd. (N.P.L.), with offices located at #1818 - 355 Burrard Street, Vancouver 1, B.C., is the holder of a block of eighty unsurveyed mineral claims located in the Taseko Lake area of south-central British Columbia.(Fig. 2)

Extensive zones of low-grade copper mineralization outcrop within the limits of the claim boundaries. These are currently being explored through a program of geological mapping, soil sampling and trenching. Field investigations, which commenced in mid-May, 1968, under the direction of the writer, assisted by Mr. Hans Reich, Geologist, and a crew of five men, are expected to continue to mid-August, 1968.

LOCATION AND ACCESS

The claim block is located in the Clinton Mining Division, lying on the east shore of Taseko Lake, approximately 85 miles due west of Clinton, B.C. The terrain in this section is mountainous and sparsely wooded with topographic relief ranging from 4500 to 7500 feet above sea level.

Access is difficult as no existing roads or logging trails are known to exist within a 15-mile radius of the claim block. Accordingly, transportation is provided either by Okanagan Helicopters operating from a base at Pemberton, B.C., or by fixed wing aircraft operating from bases located at Williams Lake and Vancouver, B.C.

Supplies and equipment required for the current Bethex program are being transported from Vancouver on a weekly basis by West Coast Air Services.

GEOLOGY

Most of the claim group is underlain by an intrusive body of laccolithic shape whose surface dimensions approximate one mile in width and two miles in length; the long axis of which trends N. 40° E. The intrusive is probably related to the Coast Range batholith and is assumed to be of Upper Cretaceous Age. The principal rock type is comprised of medium to very coarse-grained feldspar porphyry with plagioclase phenocrysts ranging up to 3/4 inch in length. These occur in association with minute hornblende crystals within a light grey, fine-grained, siliceous ground mass.

Within the central portion of the map area, the porphyritic rocks are considerably altered and show abundant mineralization consisting of pyrite, pyrrhotite and chalcopyrite. Minor amounts of bornite and molybdenite are also present. In general, the mineralization occurs in disseminated form but occasionally higher concentrations are noted to occur in association with fracture systems.

Several small erosional remnant bodies of Lower Cretaceous sedimentary rocks outcrop at scattered locations. These rocks, consisting of fine to medium-grained clastic rocks, feldspathic sandstones and poorly sorted conglomerates are generally fresh but are sometimes thermally altered.

Slightly porphyritic vari-colored pyroclastic rocks border the intrusive to the west and east. These volcanic rocks are believed to be of Lower and Upper Cretaceous Age and are conformably overlain by and interbedded with the finer grained clastic rocks.

Major fault structures trending north to northeast were observed in the sedimentary and volcanic rock sequences bordering the intrusive mass to the west and east.

GEOCHEMICAL SURVEY GRID

Preparatory to the collection of soil samples, a grid measuring approximately 4000 x 7000 feet was established by chain and compass survey over the principal area of interest. Grid lines were located at 400-foot intervals normal to the central base line and sample collection stations were surveyed in at 100-foot intervals along each of the grid lines and along the central base line.

The base line trends N. 40° E., extending over a horizontal distance of 7200 feet. Approximately 18.7 miles of line has been established during the course of the program and 970 soil samples collected and assayed for copper content. (See Fig. 1)

SAMPLING PROCEDURE

Dr. John Walker, geochemical consultant for Barringer Ltd., visited the property in early June to instruct the field crews in sampling techniques and to determine the most favorable soil horizon for sample collection. Based on Dr. Walker's recommendations, samples were collected from the B-C soil horizon interface at depths usually ranging from 1 to 6 inches below the surface. Each sample consisted of 50 to 100 grams of weathered rock and soil. Care was taken not to include any organic material and to assure the sample would yield a few grams of minus 80-mesh material. The samples were placed in a high, wet-strength Kraft paper envelope and later dried prior to shipment to the Barringer Laboratory in Vancouver.

STREAM SEDIMENT SURVEY

In conjunction with the soil sampling program, a stream sediment survey was initiated as a reconnaissance program designed to delineate areas of above background copper content for further investigation and to delimit the peripheral extent of the main area of copper mineralization.

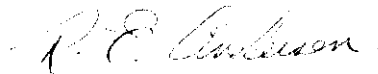
All active streams were sampled at 2000-foot intervals on a density pattern of one sample per 1/2 square mile. Due to the absence of suitable stream channels and the prevalence of snow, this objective could be achieved only in selected parts of the claim block. (Fig. 5)

Sediment samples of approximately 50 grams each were collected as close as possible to the center of the stream channel. No organic material was included and care was taken to have the sample contain an appreciable fraction of silt-size material. Samples were dried prior to shipment to Barringer Ltd., Vancouver, and later assayed for H Cl. copper (cold extractable copper).

A total of 173 samples were collected from an area of 3.5 square miles. Copper values ranged from 8 to 1100 parts per million.

DISCUSSION OF RESULTS

The geochemical survey program has been successful in delineating a rather extensive area of copper mineralization. Values ranging in excess of 50 parts per million copper are considered to be anomalous. These extend over an area measuring approximately 6000 x 3000 feet. (See Fig. 3 and Fig. 4). Preferred sections within this zone will be investigated in detail through a program of surface trenching.



R.E. Anderson
Prof. Eng. - British Columbia.

July 16, 1968.

SCHEDULE OF MINERAL CLAIMS
Banner Nos. 1 to 80 inclusive

<u>CHITA GROUP</u>		<u>TASEKO GROUP</u>		<u>CHILCO GROUP</u>	
<u>Claim Name</u>	<u>Record No.</u>	<u>Claim Name</u>	<u>Record No.</u>	<u>Claim Name</u>	<u>Record No.</u>
Banner 2	15515	Banner 1	15514	Banner 9	15522
4	15517	3	15516	10	15523
6	15519	5	15518	11	15524
8	15521	7	15520	12	15525
49	16355	16	15529	13	15526
50	16356	18	16324	14	15527
51	16357	20	16326	15	15528
52	16358	22	16328	17	16323
53	16359	24	16330	19	16325
54	16360	26	16332	21	16327
55	16361	27	16333	23	16329
56	16362	28	16334	25	16331
57	16363	29	16335		
58	16364	30	16336		
59	16365				
60	16366				

Claims Not Grouped - Record Nos. not yet received

<u>Claim Name</u>	<u>Claim Name</u>	<u>Claim Name</u>
Banner 31	Banner 44	Banner 69
32	45	70
33	46	71
34	47	72
35	48	73
36	Banner 61	74
37	62	75
38	63	76
39	64	77
40	65	78
41	66	79
42	67	80
43	68	

DOMINION OF CANADA:
 PROVINCE OF BRITISH COLUMBIA.
 To Wit:

In the Matter of

Expenditures incurred by Bethex
 Explorations Ltd. (N.P.L.) in
 completing a geochemical soil
 sampling program over Banner
 Nos. 1 to 8 incl., 10, 12, 14
 and 16 M.C.'s - Clinton Mining
 Division.

I, Robin E. Anderson, P.Eng.,
 Agent for Bethex Explorations Ltd. (N.P.L.)
 Ste. 1818 - 355 Burrard Street,
 of Vancouver 1, B.C.

in the Province of British Columbia, do solemnly declare that the following expenditures were incurred in connection with our geochemical survey program:

<u>Personnel</u>	R.E. Anderson - Geologist 10 days @ \$50	\$ 500.00	
	H. Reich - Geologist @ \$750/mo. May 21-July 8/68	1,184.59	
	E. Stonehocker - Supervisor @ \$650/mo. May 13-July 8/68	1,302.17	
	G. Beyko - Linecutter @ \$550/mo. May 13-July 8/68	1,073.05	
	R. Chattaway - Linecutter @ \$500/mo. May 24-July 8/68	788.46	
	B. Lam - Sampler @ \$500/mo. May 24-July 8/68	788.46	
	M. Abramson - Sampler @ \$500/mo. May 24-July 8/68	711.53	
	H. Marko - Supervisor @ \$800/mo. May 13-May 23/68	271.19	
	F. Day - Linecutter @ \$550/mo. May 13-May 22/68	155.17	\$ 6,774.62
<u>Aircraft</u>	Alpine Helicopters (move in camp)	1,300.00	
	Okanagan Helicopters (moving equipment and personnel)	1,222.00	
	West Coast Air Services - Vancouver to Taseko Lake	1,349.70	3,871.70
<u>Food Supplies</u>	McKenzies Ltd., Williams Lake	304.16	
	Main Food Supplies - Vancouver	791.87	1,096.03
<u>Soil Samples</u>	Assay by Barringer Research 1143 @ \$1.20	1,371.60	1,371.60
<u>Communications</u>	Radio telephone - Canadian Marconi	350.70	350.70
<u>Fuel</u>	B.A. Oil	171.19	
	Rockgas Propane	144.11	315.30
<u>Equipment</u>	Power Saws 2 @ \$5/day for 56 days	560.00	560.00
<u>Base Map Preparation</u>	Lockwood Survey	491.72	491.72
			\$ 14,831.67
			=====

And I make this solemn declaration conscientiously believing it to be true, and knowing that it is of the same force and effect as if made under oath and by virtue of the "Canada Evidence Act."

Declared before me at the city
 of VANCOUVER, in the
 Province of British Columbia, this 17
 day of JULY, A.D.

R. E. Anderson

[Signature]
 A Commissioner for taking Affidavits for British Columbia or
 A Notary Public in and for the Province of British Columbia.

MACKENZIES LTD.

WHOLESALE and RETAIL MERCHANTS

SOLD TO
Bethel Explorations Ltd
Suite 1818 Main Bldg.
355 Burrard St
Vancouver 1, B.C.

BOX 250, WILLIAMS LAKE, B.C. May 14 1968

INTEREST CHARGED ON OVERDUE ACCOUNTS

DESCRIPTION	TAXABLE ITEMS	NON-TAXABLE ITEMS
Groceries		30368
Tax		48
		<u>30416</u>
(30416)		

BETHEX EXPLORATIONS LTD. (N.P.L.)

Property TH-26

Project E-26

Expense 303

Approved by [Signature]

INVOICE NO. 2067

CUSTOMER'S SIGNATURE

A P P E N D I X

MAIN FOOD & SUPPLIES LTD.

4508 MAIN ST. (REAR)
VANCOUVER 10, B.C.

Wholesale Distributors

JUN - 3 1968

Sold to BETHEX EXPLORATION LTD.,

No. 21471

#1818 - 355 Burrard Street,

Address Vancouver, B. C. Tasako

May 29 1968

LOT No.	QUANTITY	ARTICLE	WEIGHT	PRICE	AMOUNT
	3	Cube Sugar	3	15	45
	5 x 2	Sugar	5	19	95
	1/2 LSE	Coffee, tins (18)	1/2	1125	1688
	2 x 2	Instant Chocolate	2	98	196
	1 x 60	Tea Bags	1	87	87
	6	Spaghetti	6	22	132
	2 x 2	Rice	2	47	94
	1 Doz	Pudding Pdr. inst. asst'd	1	265	265
	2 x 5	Flour, a.p.	2	63	126
	4 x 3/2	Pancake Mix	4	59	236
	2 "	Buckwheat Mix	2	59	118
	2 PKG	Variety Package	2	51	102
	1 x 3	Rolled Oats	1	57	57
	2	Soda Crackers	2	41	82
	1	Apricot Jam	1	59	59
	1	Cherry Jam	1	67	67
	2	Strawberry Jam	2	69	138
	1	Raspberry Jam	1	63	63
	5 x 2	Honey	5	65	325
	3 x 48	Peanut Butter	3	139	417
	8 x 2	Rogers Syrup	8	35	280
	8	Ketchup	8	28	224
	1 GAL	Mazola Oil	1	379	379
	6	W. Dressing	1/2	503	252
					5527

BETHEX EXPLORATIONS LTD. (N.P.L.)

Property F-26

Project 303

Expense Ref.

Approved by _____

No claims allowed unless reported upon receipt of goods. Vendor reserves right to demand payment

INTEREST CHARGED AT 8% PER ANNUM ON OVERDUE ACCOUNTS.

5527	*
6904	
13668	
8354	
7176	
41629	*

Wholesale Distributors

Sold to BETHEX EXPLORATION LTD.

NO. 21472

#1818 - 355 Burrard Street,

Address Vancouver, B. C. Taseko

May 29 1968

LOT No.	QUANTITY	ARTICLE	WEIGHT	PRICE	AMOUNT
	6	Sandwich Spread	1/2	579	290
	2	Sweet Mixed Pickles	2	51	102
	2 CSE	Apple Juice	2	469	938
	1 CSE	Orange Juice	1	439	439
	1 CSE	Grapefruit Juice	1	429	429
	1 CSE	Tomato Juice	1	475	475
	1 CSE	V-8 Juice	1	545	545
	6	Asparagus Tips	1/2	549	275
	6	Beets, sliced	1/2	245	123
	6	Beans, cut green	1/2	269	135
	1 D02	Peas	1	259	259
	6	Mixed Vegetables	1/2	249	125
	1 D02	Corn, cream	1	249	249
	6	Mushrooms, whole	1/2	430	215
	6	Spinach	1/2	270	135
	6	Tomatoes	1/2	335	168
	1 D02	Apricots	1	325	325
	1 D02	Peaches	1	298	298
	1 D02	Pears	1	355	355
	6	Pineapple	1/2	345	173
	6	Plums	1/2	215	108
	6	Cherries	1/2	375	188
	6	Strawberries	1/2	415	208
	1 D02	Ermit Cocktail	1	347	347
					6904

BETHEX EXPLORATIONS LTD. (N.P.L.)

Property E-26Project 303Expense REF

Approved By _____

No claims allowed unless reported upon receipt of goods - Vendor reserves right to demand payment without notice

CHARGED AT 6% PER ANNUM ON OVERDUE ACCOUNTS.

Wholesale Distributors

Sold to BETHEX EXPLORATION INC.,

No. 21473

#1818 - 355 Burrard Street,Address Vancouver, B. C. Taseko

May 29 1968

LOT NO.	QUANTITY	ARTICLE	WEIGHT	PRICE	AMOUNT
	1 1/3 DOZ	Salmon, sockeye (16)	1 1/3	690	920
	1 1/3 DOZ	Sardines, imported (16)	1 1/3	347	463
	2/3 CSE	Ham (P)	2/3	1989	1326
	1 1/3 DOZ	Kam (16)	1 1/3	547	729
	1 1/3 DOZ	Pork & Beans (16)	1 1/3	275	367
	1 CSE	Assorted Soup	1	999	999
	4	Pepper, black	4	19	76
	2	Garlic Salt	2	27	54
	4	Salt, table	4	14	56
	1 CTN	Kool-Aid	1	345	345
	2 CTN	Chocolate Bars, asst'd	2	215	430
	24	White Bread	24	22 1/2	540
	5 PKG	Iced Cookies	5	45	225
	2 CSE	Butter, tins	2	2050	4100
	3	Cheese Spread	3	79	237
	5 LB	Ontario Cheese	5	79	395
	14 QT	Milk, Homo	14	31 1/2	441
	2 DOZ	Canned Milk	2	219	438
	1 SK	Potatoes	1	695	695
	30 LBS	Onions	30	13	390
	1/4 DOZ	Celery	1/4	325	81
	1 BKT	Tomatoes	1	175	175
	6 BUN	Radishes	6	10	60
	4	Cabbage	4	12	48
	2	Cauliflowers	2	39	78

BETHEX EXPLORATIONS LTD. (N.P.L.)

Property

Project

Expense

Approved by

unless reported upon receipt of goods - Vendor reserves right to demand payment without notice

INTEREST CHARGED AT 6% PER ANNUM ON OVERDUE ACCOUNTS.

13668

MAIN FOOD & SUPPLIES LTD.

4508 MAIN ST. (REAR)
VANCOUVER 10, B.C.

Wholesale Distributors

Sold to BETHEX EXPLORATION INC.,

No. 21474

#1818 - 355 Burrard Street,Address Vancouver, B. C. Taseko

May 29 1968

LOT No.	QUANTITY	ARTICLE	WEIGHT	PRICE	AMOUNT	
	60	Apples	18	20	360	
	1 Doz	Grapefruit	1	169	169	
	5 Doz	Oranges	5	95	475	
	1	Toothpicks	T	10	10	
	1	Matches, H/H	T	35	35	
	3 GAL	Bleach	T	79	237	
	1 CSE	Lime	T	335	335	
	2 Doz	Lifebuoy Soap	T	205	410	
	2	Soap Powder	T	105	210	
	8	Liquid Detergent <i>DEAL</i>	T	89	712	
	2	S O S	T	39	78	
	2 Doz	Toilet Tissues	T	169	338	
	3 x10	Wax Paper Square	T	355	1065	
	4	Saran Wrap, Q/S	T	59	236	
	1	Aluminum Foil	T	69	69	
	1 Doz	Linen Tea Towels	T	495	495	
	3	Brooms	T	239	717	
	1 Doz	Cigarette Tobacco	T	480	480	
	6	Vogue Cig. Papers	T	06	36	
	1 C	Paper Bags, 10" x 8"	T	79	79	
	4	Water Pail	T	167	668	
	4	Dish Pans	T	158	632	
	1	Dish Pan, LID (N.P.L.)	T	158	158	
					TAX (50% of 70%)	8004 350

Property E-26
 Project 303
 Expense RET
 Approved by _____

No claims allowed unless reported upon receipt of goods Vendor reserves right to demand payment without notice

INTEREST CHARGED AT 8% PER ANNUM ON OVERDUE ACCOUNTS.

MAIN FOOD & SUPPLIES LTD.

4508 MAIN ST. (REAR)
VANCOUVER 10, B.C.

Wholesale Distributors

Sold to BETHEX EXPLORATION INC.,

No. 21475

#1818 - 355 Burrard Street,Address Vancouver, B. C. TasekoMay 29 19 68

LOT NO.	QUANTITY	ARTICLE	WEIGHT	PRICE	AMOUNT										
	12 ^{1/2}	Eggs, A lge ctn	12	46	552										
	2 ^{1/2}	Bacon, side <i>DK Curo</i>	2 ^{1/2}	79	178										
	2 ^{1/2}	Bacon, back <i>DK Curo</i>	2 ^{1/2}	133	333										
	21 ^{1/2}	Ham, B & R <i>DK</i>	21 ^{1/2}	96	2064										
	3	Pork Sausage	3	65	195										
	6	Minced Beef	6	59	354										
	12 ^{1/2}	Beef Steaks, A.P.H.	12 ^{1/2}	149	1863										
	13 ^{1/2}	Pork Chops <i>ep</i>	13 ^{1/2}	89	1224										
	82	Frying Chickens <i>Army</i>	82	49	413										
					7176										
<table border="1" style="margin: auto;"> <tr> <td colspan="2">BETHEX EXPLORATIONS LTD. (N.P.L.)</td> </tr> <tr> <td>Property</td> <td><i>E-26</i></td> </tr> <tr> <td>Project</td> <td><i>303.</i></td> </tr> <tr> <td>Expense</td> <td><i>RET</i></td> </tr> <tr> <td>Approved by</td> <td>.....</td> </tr> </table>						BETHEX EXPLORATIONS LTD. (N.P.L.)		Property	<i>E-26</i>	Project	<i>303.</i>	Expense	<i>RET</i>	Approved by
BETHEX EXPLORATIONS LTD. (N.P.L.)															
Property	<i>E-26</i>														
Project	<i>303.</i>														
Expense	<i>RET</i>														
Approved by														

No claims allowed unless reported upon receipt of goods - Vendor reserves right to demand payment without notice

INTEREST CHARGED AT 8% PER ANNUM ON OVERDUE ACCOUNTS.

MAIN FOOD & SUPPLIES LTD.

4508 MAIN ST. (REAR)
VANCOUVER 10, B.C.

Wholesale Distributors

Sold to BETHEX EXPLORATION LTD.,

JUN 19 1968 No. 21758

#1818 - 355 Burrard Street,

Address Vancouver, B. C. Taseko

June 10 1968

LOT NO.	QUANTITY	ARTICLE	WEIGHT (N.P.L.)	PRICE	AMOUNT
	1 X5	BETHEX EXPLORATIONS LTD. Spaghetti	1	80	80
	3 X2	Property Pranes	3	75	225
	1 X2	Project Dates	1	53	53
	-	Expense	-	-	-
	2	Figs Approved by <i>PCT</i>	2	33	66
	2	Ritz Soda Crackers	2	41	82
	1 GAL	Mazola Oil	1	398	398
	3 CSE	Canned Pop, asst'd	3	210	630
	3 CTN	Chocolate Bars, asst'd	3	215	645
	15 X2	White Bread	15	45	675
	5 PKG	DAOS	5	40	200
	5	Cookies, asst'd CO	5	49	245
	1 X5	Sliced Cheese	1	339	339
	3 DOZ	Raisins	3	55	165
	1 CTN	Peanuts, 24/	1	215	215
	5	Ontario Cheese, med	5	79	395
	14 RT	Milk, Homo	14	31 1/2	441
	8	Carrots	8	10	80
	2	Celery	2	29	58
	4	Lettuce	4	13	52
	2 BKT	Tomatoes	2	129	258
	9	Cabbage	9	13	117
	11	Apples	11	25	275
	-	Bing Cherries	-	-	-
	1/2 DOZ	Grapefruit	1/2	150	75
					5769

No claims allowed unless reported upon receipt of goods - Vendor reserves

INTEREST CHARGED AT 6% PER ANNUM ON OVERDU

5769

10989

16758*

Wholesale Distributors

Sold to BETHDEX EXPLORATION LTD.,

No. 21759

#1818 - 355 Burrard Street,Address Vancouver, B. C. Taseko

June 10, 1968

LOT NO.	QUANTITY	ARTICLE	WEIGHT	PRICE	AMOUNT
	1/2 DOZ	Lemons	1/2	59	30
	2 1/2 DOZ	Oranges	2 1/2	79	198
	4	Vapona Fly Strips	4	315	1260
	1	S O S	T 1	39	39
	6 X2	Paper Towels	T 6	51	306
	2	Deck Mop	T 2	159	318
	1	Galvanized Pail	T 1	198	198
	2	Thermos	T 2	225	450
	6	Suntan Lotion SEA + SKI	T 6	165	990
	15 DOZ	Eggs, A med	15	37	555
	6	Bacon, side	6	75	450
	3	Sl. Ham	3	69	207
	4	Wieners	4	47	188
	1 PKG		1	39	39
	2 PKG	Salami	2	29	58
	10	Pork Sausages	10	65	650
	6	Minced Beef	6	59	354
	3	Corned Beef	3	78	234
	13	Beef Steaks	13	109	1417
	10	Veal Outlets	10	125	1250
	14 ⁸	Pork Chops	14 ⁸	89	1291
	8	Frying Chickens	8	49	392
		Dry Ice			10874
		TAX			115
					10959

No claims allowed unless reported upon receipt of goods - Vendor reserves right to demand payment without notice

INTEREST CHARGED AT 8% PER ANNUM ON OVERDUE ACCOUNTS.

Wholesale Distributors

Sold to BETHEX EXPLORATION LTD.

NO. 21890

#1818 - 355 Burrard Street,

BETHEX EXPLORATIONS LTD. (N.P.L.)

Address Vancouver, B. C.

Taseko

Property E-26.1

June 14 1968

Project 323Expense [Signature]Approved by [Signature]

LOT No.	QUANTITY	ARTICLE	WEIGHT	PRICE	AMOUNT
	4	Cube Sugar	4	15	60
	1-5	Sugar	7	45	45
	2	Tea Bags	2	47	94
	1 lb	Instant Pudding	1	250	250
	6 lb	Raisins	6	29	174
	3	Figs <u>WHITE</u>	3	57	171
	2	Dates	2	55	110
	2	Variety Cereal	2	52	104
	4	Soda Crackers	4	23	92
	4	L.J. Syrup	4	45	180
	1 gal	Mazola Oil	1	379	379
	4	Canned Chicken	4	69	276
	8	Vegetable Soup	8	17	136
	8	Tomato Soup	8	16	128
	8	Pea Soup	8	17	136
	4	Lipton Chicken Noodle	4	24	96
	4	Lipton Beef	4	27	108
	4	Lipton Tom. & Veg.	4	26	104
	3	Canned Pop, asst'd	3	210	630
	1 lb	Kool Aid	1	345	345
	3 lb	Chocolate Bars, asst'd	3	220	660
	15	Bread	15	22 2/3	338
	1 doz pk	Assorted Cookies	1	565	565
	5 x 1	Sliced Cheese	5	75	375
	5 x 1	Assorted Cheese	1	570	570

2 McHanna 2x70 + Danish 4x41

60.86

2 Gouda 2x43 + Swiss variety 2x35

60.96

2 Swiss 2x55

No claims allowed unless reported upon receipt of goods - Vendor reserves right to demand payment without notice

INTEREST CHARGED AT 8% PER ANNUM ON OVERDUE ACCOUNTS.

MAIN FOOD & SUPPLIES LTD.

4508 MAIN ST. (REAR)
VANCOUVER 10, B.C.

Wholesale Distributors

Sold to BORHEX EXPLORATION LTD.

No. 21891

#1818 - 355 Burrard Street,Address Vancouver, B. C. Taseko

June 14 1968

LOT No.	QUANTITY	ARTICLE	WEIGHT	PRICE	AMOUNT
	16ct	Tomatoes	1	165	165
	4	Lettuce	4	15	60
	2.2ct	Watermelon	2	105	210
	4	Carrots	4	10	40
	3	Cantaloupe	3	35	105
	2	Celery	2	29	58
	30 - 12"	Apples <i>US R77</i>	12	25	300
	30	Oranges	2 1/2	79	198
	1ct	Matches	T	36	36
	1	Saran Wrap	T	39	39
	2	Playing Cards	T	119	238
		Crib Board	T		-
	12	Eggs, A lge ctn	12	49	588
	3	Bacon <i>"1 7/8"</i>	3	83	249
	3	Pork Sausages	3	63	189
	1ct	B & R Sm. Ham	7 1/2	98	760
	2	Wieners	2	47	94
	6ct	Beef Steaks <i>AP14</i>	6 1/2	155	1047
	12ct	Veal Outlets <i>ct</i>	28	125	313
	12ct	Pork Chops <i>ct</i>	4 1/2	89	423
	3	Chicken <i>Ag14</i>	7 1/2	49	355
	3	Minced Beef <i>4/26</i>	3	59	177
					5644
				TAX	16
					5660

No claims allowed unless reported upon receipt of goods - Vendor reserves right to demand payment without notice

INTEREST CHARGED AT 8% PER ANNUM ON OVERDUE ACCOUNTS.

ALPINE HELICOPTERS LTD.

MAY 22 1968

KOY.

McCALL FIELD, CALGARY BY AIRMAIL



Charterer **BETHEX HELICOPTERS LTD.**

Billing address: **1818 P.O. BOX 208, KELOWNA, BRITISH COLUMBIA**

I hereby authorize the charter flights to be recorded on this sheet and I certify that I am empowered to give this authorization on behalf of the above named charterer and in the event of denial of this authority I shall be responsible for payment of the charges.

**BETHEX EXPLORATIONS LTD.,
1818 - 355 BARRARD ST.,
VANCOUVER 1, B.C.**

Invoice No.: **K1026**

Date: **MAY 21, 1968**

Contract No.: **K-500**

Work Order No.:

TIME	PILOT	LOCATION	DATE	RATE
FROM	TO	TIME UP	TIME DOWN	FLIGHT HOURS
TO: CHARGE FOR HIRE OF BELL 206 HELICOPTER IN THE ALEXIS CREEK AREA				
	CF-AJR	MAY 17/68	FLIGHT REPORT NO. 1580	6:30 hrs.
	6 hrs..30 mins. @ \$200.00 per hr.			\$1,300.00
TOTAL AMOUNT DUE THIS INVOICE				<u>\$1,300.00</u>

I certify that the flying was done under the above authorization.

CUSTOMER COPY

BETHEX EXPLORATIONS LTD. (N.P.L.)

Property E-26

Project 405

Expense _____

Approved by R.E.H.



JUN 10 1968

INVOICE

LOCKWOOD SURVEY CORPORATION LTD.

WEST COAST DIVISION

1409 West Pender Street • Vancouver 5, B. C., Canada • 683-6501 • Cables: Canlock

Bethex Explorations Ltd.,
355 Burrard Street,
Vancouver 1, B.C.

INVOICE No 4786
DATE 31st May 1968
YOUR ORDER No
JOB No 68-124
TERMS: NET CASH
SHIPPED VIA

QUANTITY	DESCRIPTION	UNIT PRICE	TOTAL
TO:	Completion, Engineering Services: Topographic mapping at a scale of 1-inch equals 500 feet with 50 foot contours, in pencil manuscript form, of your area of interest Taseko Lake, including an enlargement at 1-inch equals 1000 feet of the overall area:	\$98.00	
	Lump sum		
	Federal Sales Tax 1.2%	<u>1.18</u>	
			<u>\$99.18</u>

INTEREST MAY BE CHARGED ON OVERDUE ACCOUNTS



BARRINGER RESEARCH LIMITED

JUL - 4 1968

304 CARLINGVIEW DRIVE
REXDALE, ONTARIO, CANADA
PHONE: 416-677-2491
CABLE: BARESEARCH

ADVANCED TECHNIQUES AND INSTRUMENTATION FOR THE EARTH SCIENCES

DATE: June 28, 1968

PROJECT: 100.33

PERIOD COVERED:

PROGRESS BILLING:

SHIPPING REPORT:

WORK REPORT: 156

FED. SALES TAX: N/A

ONT. SALES TAX: N/A

- Bethex Exploration Limited
355 Burrard Street
• Vancouver, B. C.

TERMS: NET

AUTHORITY: H. Reich

TO: Geochemical Analysis:

325	Samples analysed for total copper	@ \$1.00 each	325.00	
328	Soil Sample Preparations	@ \$.20 each	65.60	
				390.60

Report Number 156 issued on June 19, 1968

BETHEX EXPLORATIONS LTD. (P.P.S.)	
Property	E-26
Project	402
Expense	POT.

INVOICE N° 3425

MAIN FOOD & SUPPLIES LTD.

4508 MAIN ST. (REAR)
VANCOUVER 10, B.C.

Wholesale Distributors

JUL - 5 1968

No. 22191

Sold to BETHEX EXPLORATION LTD.#1818 - 355 Burrard Street,Address Vancouver, B. C. Taseko

June 28 1968

LOT No.	QUANTITY	ARTICLE	WEIGHT	PRICE	AMOUNT
	1	CSC Apple Juice, 24/19	1	469	469
	1	XS Flour	1	69	69
	1	XS Rice	1	119	119
	1	XS Sliced Cheese	1	349	349
	10	PK6 Jelly Powders	10	21	210
	10	TIN Apricots	10	290	2900
	10	TIN Cherries	10	35	350
	10	TIN Asparagus Tips	10	49	490
	6	TIN Canned Meat	6	49	294
	20	Apples	6 ⁸	25	173
	30	Oranges	2 ¹ / ₂	79	198
	12	Corn on Cob	1/2	129	1548
	4	TIN Cleanser, O.D.	T 4	21	84
	2	PK6 Soap Powder, Tide	T 2	109	218
	1	DOZ Cigarette Tobacco, Players	T 1	445	445
	1	X12 Milk Powder	1	485	485
	15	Pork Chops	4 ¹ / ₂	59	378
	12	Beef Steaks	12 ¹ / ₂	159	2028
	3	Chicken Breast	5 ⁶	65	349
	3	Chicken Legs	5	74	370
	5	Minced Beef	5	62	310
	24	Veal Outlets	6	129	774
	10	Eggs, A lge ctn	10	49	490
					9007
					37

BETHEX EXPLORATIONS LTD. (N.P.L.)

Property E-26Project 303

No claims allowed unless reported upon receipt of goods. Vendor reserves right to demand payment without notice.

Approved by [Signature] INTEREST CHARGED AT 6% PER ANNUM ON OVERDUE ACCOUNTS.



MAR 6 - 1968

INVOICE

LOCKWOOD SURVEY CORPORATION LTD.

WEST COAST DIVISION

1409 West Pender Street • Vancouver 5, B. C., Canada • 683-6501 • Cables: Canlock

Bethex Explorations Ltd.,
355 Burrard Street,
Vancouver 1, B.C.

BETHEX EXPLORATIONS LTD. (N.P.L.)	
Property	<u>E-26</u>
Project	<u>80</u>
Expense	<u>25</u>
Approved by	<u>R. E. P.</u>

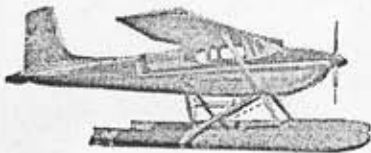
INVOICE No 4672
 DATE 29 February 1968
 YOUR ORDER No
 JOB No 68-17
 TERMS: NET CASH
 SHIPPED VIA

Authority: Mr. Ivor Watson.

QUANTITY	DESCRIPTION	UNIT PRICE	TOTAL
	TO:		
	Completion, Engineering Services:		
	1-inch equals 1000 feet topographic mapping with 50 foot contour intervals, in manuscript form, enlarged to 500 feet equals 1-inch of your area of interest Taseko Lake:		
	Lump sum	\$360.00 ✓	
	1.2% Federal Sales Tax	<u>4.32</u> ✓	\$364.32 ✓
	2 Enlargements at an approximate scale of 1-inch equals 1000 feet of portion of photos No. BC 5145 - 63 and BC 5152 - 159		
	12% Federal Sales Tax	\$24.00 ✓	
		<u>2.88</u> ✓	
	5% Provincial Sales Tax	\$26.88 ✓	
		<u>1.34</u> ✓	28.22 ✓
			<u>\$392.54</u> ✓

INTEREST MAY BE CHARGED ON OVERDUE ACCOUNTS

STATEMENT



Chilcotin Airways Ltd.

P.O. BOX 1659

WILLIAMS LAKE, B.C.

June 25, 1968

Bethex Exploration

Suite 1818 - 355 Burrard St

Vancouver BC

Float plane service

Stinson R44

Wms Lake, Taseko, return

90 miles @ 1.67¢ a

running mile

\$120.60

BETHEX EXPLORATIONS LTD. (N.P.L.)

Property E-26

Project 405

Expense

Approved by R.E.T.



OKANAGAN HELICOPTERS LTD.
VANCOUVER AIRPORT, B. C.
TELEPHONE: 278-5502

FEB -2 1968

KOG.

Bethex Explorations Ltd.,
Box 2488,
Smithers, B. C.

Date	January 22, 1968	Invoice No.	1/48	AR 575
P.O. No.		Authority		

To charter of Hiller helicopter CF-OKF

Flying January 8, 1968, as per attached report

3 hours 30 minutes @ \$140.00 per hour

\$490.00
=====

PK

DUE AND PAYABLE WITHIN 15 DAYS



OKANAGAN HELICOPTERS LTD.
VANCOUVER AIRPORT, B.C.
TELEPHONE: 278-5502

JUN 17 1968

Bethex Explorations Ltd.,
Suite 1818,
355 Burrard Street,
Vancouver 1, B. C.

Date June 13, 1968

Invoice No.

6/97

AR 575

P.O. No.

Authority

To charter of Bell J2 helicopter CF-OKJ

Flying June 3, 1968, as per attached report

2 hours 25 minutes @ \$149.00 per hour

\$360.08

=====

2.41666 hrs

E-26-405

DUE AND PAYABLE WITHIN 15 DAYS

JUN 27 1968



OKANAGAN HELICOPTERS LTD.

VANCOUVER AIRPORT, B. C.

TELEPHONE: 278-5502

TO

Bethex Explorations Ltd.,
Suite 1818,
355 Burrard Street,
Vancouver 1, B. C.

Date June 26, 1968

Invoice No.

6/306

AR 575

P.O. No.

Authority

To charter of Bell J2 helicopter CF-OKJ

Flying June 23, 1968, as per attached
report

2 hours 30 minutes @ \$149.00 per hour

\$372.50
=====

BETHEX EXPLORATIONS LTD. (N.P.L.)	
Property	E-26
Project	405
Expense	
Approved by	RPA

DUE AND PAYABLE WITHIN 15 DAYS

IN ACCOUNT WITH

WEST COAST AIR SERVICES LTD.

TELEPHONE 278-8431 AREA CODE 604 TELEX 045542

VANCOUVER INTERNATIONAL AIRPORT, B.C., CANADA

JUN 4 1968

Bethlehem-Copper
Box 520
Ashcroft, B. C.

DATE May 30, 1968

Attention: Mr. Anderson

YOUR ORDER No.

AIRCRAFT SALES & SERVICE • CHARTER & CONTRACT FLYING • AIRCRAFT PARTS & SUPPLIES

DATE			
y 29, 1968	CHARTER FLIGHT: Vancouver - Taseko Lake - Vancouver	\$.55/mi. 181.50	
	330 mi.		
	TICKET NO.: E-7300 Ticket attached		
	AIRCRAFT: CF-SSW Cessna 185		
	REMARKS: Food Supply Drop		

BETHEX EXPLORATIONS LTD. (N.P.L.)	
Property	E-76
Project	405
Expense	
Approved by	RBT

TERMS: NET THIRTY DAYS - INTEREST MAY BE CHARGED ON OVERDUE ACCOUNTS - CLAIMS MUST BE MADE WITHIN FIVE DAYS AFTER RECEIPT OF GOODS



The

New, All Metal Aircraft

172
Skyhawk
175
Skylark
180
185
Skylane
210
310

LICENSED

CESSNA DISTRIBUTORS

SALES & SERVICE

CHARTER SERVICE

FLYING SCHOOL

PASSENGER'S FLIGHT TICKET

IN ACCOUNT WITH

WEST COAST AIR SERVICES LTD.

TELEPHONE 278-8431 AREA CODE 604 TELEX 045542

VANCOUVER INTERNATIONAL AIRPORT, B.C., CANADA

JUN - 4 1968

Bethlehem Copper Corp. Ltd.,
355 Burrard Street,
Vancouver, B. C.

DATE May 31, 1968

Attention: Mr. R. Anderson

YOUR ORDER No.

AIRCRAFT SALES & SERVICE • CHARTER & CONTRACT FLYING • AIRCRAFT PARTS & SUPPLIES

DATE													
May 24	Charter Flight: Vancouver/Taseko Lake/Vancouver <i>330 miles</i>	.77/mi	\$ 254.10										
	Ticket No. E 7307												
	Aircraft: CF-JPL - DeHavilland Beaver												
	Passengers: Mr. I. Watson and party	<table border="1"> <tr><td colspan="2">BETHEX EXPLORATIONS LTD. (N.P.L.)</td></tr> <tr><td>Property</td><td><i>E-26</i></td></tr> <tr><td>Project</td><td><i>405</i></td></tr> <tr><td>Expense</td><td></td></tr> <tr><td>Approved by</td><td><i>REH</i></td></tr> </table>		BETHEX EXPLORATIONS LTD. (N.P.L.)		Property	<i>E-26</i>	Project	<i>405</i>	Expense		Approved by	<i>REH</i>
BETHEX EXPLORATIONS LTD. (N.P.L.)													
Property	<i>E-26</i>												
Project	<i>405</i>												
Expense													
Approved by	<i>REH</i>												

TERMS: NET THIRTY DAYS - INTEREST MAY BE CHARGED ON OVERDUE ACCOUNTS - CLAIMS MUST BE MADE WITHIN FIVE DAYS AFTER RECEIPT OF GOODS

Cessna
The
New, All Metal Aircraft

- 172 Skyhawk
- 175 Skylark
- 180 Skylark
- 185 Skylark
- 210 Skylane
- 310 Skylane

LICENSED
CESSNA DISTRIBUTORS
SALES & SERVICE
CHARTER SERVICE
FLYING SCHOOL

PASSENGER'S FLIGHT TICKET

WEST COAST AIR SERVICES LTD.

TELEPHONE 278-8431 AREA CODE 604 TELEX 045542

VANCOUVER INTERNATIONAL AIRPORT, B.C., CANADA

Bethex Explorations Ltd.
355 Burrard Street,
Vancouver, B. C.

DATE May 31, 1968

YOUR ORDER No.

AIRCRAFT SALES & SERVICE • CHARTER & CONTRACT FLYING • AIRCRAFT PARTS & SUPPLIES

DATE													
May 29	Charter Flight: Vancouver/Taseko Lake/Vancouver	.77/mi	\$ 254.10										
	Ticket No. E 8627												
	Aircraft: CF-HGX - DH Beaver												
	Passenger: Mr. M. Abrahamson + 1000 lbs.												
		<table border="1"> <tr> <td>Freight.</td> <td>BETHEX EXPLORATIONS LTD. (N.P.L.)</td> </tr> <tr> <td>Property</td> <td>E-26</td> </tr> <tr> <td>Project</td> <td>405</td> </tr> <tr> <td>Expense</td> <td></td> </tr> <tr> <td>Approved by</td> <td><i>RAK</i></td> </tr> </table>		Freight.	BETHEX EXPLORATIONS LTD. (N.P.L.)	Property	E-26	Project	405	Expense		Approved by	<i>RAK</i>
Freight.	BETHEX EXPLORATIONS LTD. (N.P.L.)												
Property	E-26												
Project	405												
Expense													
Approved by	<i>RAK</i>												

TERMS: NET THIRTY DAYS - INTEREST MAY BE CHARGED ON OVERDUE ACCOUNTS - CLAIMS MUST BE MADE WITHIN FIVE DAYS AFTER RECEIPT OF GOODS



The
New, All Metal Aircraft

- 172 Skyhawk
- 175 Skylark
- 180
- 185 Skylane
- 210
- 310

LICENSED
CESSNA DISTRIBUTORS
SALES & SERVICE
CHARTER SERVICE
FLYING SCHOOL

PASSENGER'S FLIGHT TICKET

IN ACCOUNT WITH

WEST COAST AIR SERVICES LTD.

TELEPHONE 278-8431 AREA CODE 604 TELEX 045542

VANCOUVER INTERNATIONAL AIRPORT, B.C., CANADA

Bethex Explorations Ltd.
1818 - 355 Burrard Street
Vancouver, B. C.

JUN 19 1968


DATE June 18, 1968

YOUR ORDER No.

AIRCRAFT SALES & SERVICE • CHARTER & CONTRACT FLYING • AIRCRAFT PARTS & SUPPLIES

DATE	DESCRIPTION	RATE	AMOUNT
15, 1968	CHARTER FLIGHT: Vancouver - Taseko Lake - Vancouver	\$.50/mi.	\$165.00
TICKET NO.: E-7901 Ticket Attached		BETHEX EXPLORATIONS LTD. (N.P.L.)	
AIRCRAFT: CF-WME Cessna 180		Property <u>E-26</u>	
PASSENGERS: Mr. Andersen, Miss Andersen		Project <u>405</u>	
		Expense _____	
		Approved by <u>RLH</u>	

TERMS: NET THIRTY DAYS - INTEREST MAY BE CHARGED ON OVERDUE ACCOUNTS - CLAIMS MUST BE MADE WITHIN FIVE DAYS AFTER RECEIPT OF GOODS



The
New, All Metal Aircraft

- 172 Skyhawk
- 175 Skylark
- 180
- 185 Skylane
- 210
- 310

LICENSED
CESSNA DISTRIBUTORS
SALES & SERVICE
CHARTER SERVICE
FLYING SCHOOL

PASSENGER'S FLIGHT TICKET

IN ACCOUNT WITH

JUN 13 1968

WEST COAST AIR SERVICES LTD.

TELEPHONE 278-8431 AREA CODE 604 TELEX 045542

VANCOUVER INTERNATIONAL AIRPORT, B.C., CANADA

Bethex Explorations Ltd.
1818 - 355 Burrard Street
Vancouver, B. C.

DATE June 12, 1968

YOUR ORDER No.

AIRCRAFT SALES & SERVICE • CHARTER & CONTRACT FLYING • AIRCRAFT PARTS & SUPPLIES

DATE		
June 10, 1968	CHARTER FLIGHT: Vancouver - Taseko Lake - Vancouver	\$165.00
	TICKET NO.: E-8600 Ticket attached	
	AIRCRAFT: CF-UQB Cessna 180	
	LOAD: Freight	

BETHEX EXPLORATIONS LTD. (N.P.L.)	
Property	E-26
Project	405
Expense	
Approved by	RPT

TERMS: NET THIRTY DAYS - INTEREST MAY BE CHARGED ON OVERDUE ACCOUNTS - CLAIMS MUST BE MADE WITHIN FIVE DAYS AFTER RECEIPT OF GOODS



The New, All Metal Aircraft

- 172 Skyhawk
- 175 Skylark
- 180
- 185 Skylane
- 210
- 310

LICENSED

CESSNA DISTRIBUTORS

SALES & SERVICE

CHARTER SERVICE

FLYING SCHOOL

PASSENGER'S FLIGHT TICKET

WEST COAST AIR SERVICES LTD.

TELEPHONE 278-8431 AREA CODE 604 TELEX 045542

VANCOUVER INTERNATIONAL AIRPORT, B.C., CANADA

BETHEX EXPLORATIONS LTD.
1818 - 355 Burrard Street
Vancouver 1, B. C.

DATE June 30, 1968

YOUR ORDER No.

AIRCRAFT SALES & SERVICE • CHARTER & CONTRACT FLYING • AIRCRAFT PARTS & SUPPLIES

DATE													
June 30, 1968	CHARTER FLIGHT: Vancouver - Taseko Lake - Vancouver	\$.50/mi.	\$165.00										
	TICKET NO.: E-7975 Ticket Attached												
	AIRCRAFT: CF-WME Cessna 180												
	<table border="1"> <tr> <td colspan="2">BETHEX EXPLORATIONS LTD. (N.P.L.)</td> </tr> <tr> <td>Property</td> <td>E-26</td> </tr> <tr> <td>Project</td> <td>405</td> </tr> <tr> <td>Expense</td> <td></td> </tr> <tr> <td>Approved by</td> <td>RRT.</td> </tr> </table>			BETHEX EXPLORATIONS LTD. (N.P.L.)		Property	E-26	Project	405	Expense		Approved by	RRT.
BETHEX EXPLORATIONS LTD. (N.P.L.)													
Property	E-26												
Project	405												
Expense													
Approved by	RRT.												

TERMS: NET THIRTY DAYS - INTEREST MAY BE CHARGED ON OVERDUE ACCOUNTS - CLAIMS MUST BE MADE WITHIN FIVE DAYS AFTER RECEIPT OF GOODS



The
New, All Metal Aircraft

172 Skyhawk
175
180 Skylark
185
210 Skylane
310

LICENSED
CESSNA DISTRIBUTORS
SALES & SERVICE
CHARTER SERVICE
FLYING SCHOOL

PASSENGER'S FLIGHT TICKET

IN ACCOUNT WITH

WEST COAST AIR SERVICES LTD.

TELEPHONE 278-8431 AREA CODE 604 TELEX 045542

VANCOUVER INTERNATIONAL AIRPORT, B.C., CANADA

JUL 15 1968

Bethex Explorations Ltd.
1818 - 355 Burrard Street
Vancouver, B. C.

DATE July 12, 1968

YOUR ORDER No.

AIRCRAFT SALES & SERVICE • CHARTER & CONTRACT FLYING • AIRCRAFT PARTS & SUPPLIES

DATE			
July 10, 1968	CHARTER FLIGHT: Vancouver/Taseko Lake/Vancouver	\$.50/mi.	\$165.00
	TICKET NO.: E-8091 Ticket Attached		
	AIRCRAFT: CF-UQB Cessna 180		
	LOAD: Freight in and out		

BETHEX EXPLORATIONS LTD. (N.P.L.)
 Property E-20
 Project _____
 Expense 405
 Approved by RET

TERMS: NET THIRTY DAYS - INTEREST MAY BE CHARGED ON OVERDUE ACCOUNTS - CLAIMS MUST BE MADE WITHIN FIVE DAYS AFTER RECEIPT OF GOODS



The

New, All Metal Aircraft

172
Skyhawk
175
Skylark
180
185
Skylane
210
310

LICENSED

CESSNA DISTRIBUTORS

SALES & SERVICE

CHARTER SERVICE

FLYING SCHOOL

PASSENGER'S FLIGHT TICKET



BARRINGER RESEARCH LIMITED

JUL - 4 1968

304 CARLINGVIEW DRIVE
REXDALE, ONTARIO, CANADA
PHONE: 416-677-2491
CABLE: BARESEARCH

ADVANCED TECHNIQUES AND INSTRUMENTATION FOR THE EARTH SCIENCES

DATE: June 28, 1968

PROJECT: 100.33

PERIOD COVERED:

PROGRESS BILLING:

SHIPPING REPORT:

WORK REPORT: 154

FED. SALES TAX: N/A

ONT. SALES TAX: N/A

Bethex Exploration Limited
355 Burrard Street
Vancouver, B. C.

TERMS: NET

AUTHORITY: H. Reich

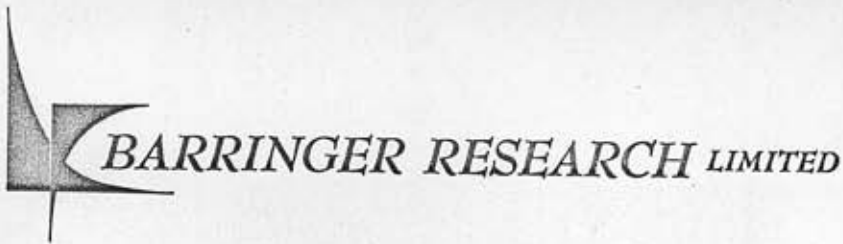
TO: Geochemical Analysis:

174 Samples analysed for total copper	@ \$1.00 each	174.00	
174 Soil Sample Preparations	@ \$.20 each	34.80	
			208.80

Report Number 154 issued on June 21, 1968

BETHEX EXPLORATIONS LTD. (N.P.L.)
Property E-16
Project 402
Signature REH

INVOICE No 3423



JUL - 2 1968

304 CARLINGVIEW DRIVE
 REXDALE, ONTARIO, CANADA
 PHONE: 416-677-2491
 CABLE: BARESEARCH

ADVANCED TECHNIQUES AND INSTRUMENTATION FOR THE EARTH SCIENCES

DATE: June 28, 1968

PROJECT: 100.33

PERIOD COVERED:

PROGRESS BILLING:
 SHIPPING REPORT:

WORK REPORT: 155
 FED. SALES TAX: N/A
 ONT. SALES TAX: N/A

- Bethex Limited
 355 Burrard Street
 • Vancouver, B. C.

TERMS: NET

AUTHORITY: H. Reich

TO: Geochemical Analysis:

139 Samples analysed for HCl copper	@ \$1.00 each	139.00	
139 Soil Sample Preparations	@ \$.20 each	27.80	
			166.80

Report Number 155 issued on June 19, 1968

BETHEX EXPLORATIONS LTD. (N.P.L.)
 Property E-26.
 Project 402.
 Expense _____
 Issued by R.R.

BRANCH No. 22

BETHEX EXPLORES (N.P.L.)
FOR ADDRESSES, PLEASE REFER TO THE BACK OF THIS INVOICE

METER READING AT START OF DELIVERY
Property TASEKO

Project E-212 GALLONS

METER READING AT END OF DELIVERY
Expense 303

Approved by _____ GALLONS PER NUMBER

DATE May 14/68

SOLD TO Bethex Corporation

PLANT No.	TRUCK No.	CYLINDER SIZE <u>3-100</u>	TAG No.			
-----------	-----------	----------------------------	---------	--	--	--

ROCKGAS ..	QUANTITY	UNIT PRICE	AMOUNT
BULK, IN GALLONS			
CYLINDERS, IN POUNDS	<u>300</u>		<u>2700</u>
S.S. TAX			<u>135</u>
PROVINCIAL GAS TAX			
TOTAL			<u>2835</u>

COLLECT _____ Payment due within 30 days of delivery, send payment to address shown on back.

RECEIVED PAYMENT _____

DRIVER S. GR

RECEIVED ABOVE H. Marko SIGNATURE OF CUSTOMER

551362

INVOICE PLEASE SEE OVER

STATEMENT



ROCKGAS PROPANE LTD.

JUN 17 1968

B
R
A
N
C
H

P.O. BOX 1896
WILLIAMS LAKE, B.C.

S
O
L
D
T
O

BETHEX EXPLORATIONS LTD

076240

1818 MARINE BLDG
355 BURRARD ST
VANCOUVER 1 B C

PLEASE DETACH AND MAIL TOP PORTION WITH REMITTANCE

R. L. CRAIN LIMITED

DATE			REFERENCE NUMBER	DESCRIPTION	AMOUNT
DAY	MO.	YR.			
30	05	68	551362	BALANCE FORWARD	
30	05	68	006887	INVOICE	28.35
				INVOICE	115.76
31	05	68		PAYMENTS & CHARGES AFTER THIS DATE WILL APPEAR ON NEXT STATEMENT BALANCE	144.11

1% SERVICE CHARGE MONTHLY ON OVERDUE ACCOUNTS.

Form 41

CUSTOMER'S INVOICE
TERMS NET



ROCKGAS PROPANE LTD.

PLEASE REMIT TO
BOX 1898
WILLIAMS LAKE, B. C.

□ □ □ □ □ □ □ □

Name Bethex Explorations

Ship To _____

Address _____

Ship Via S. & R

S.S. Tax No. _____

Invoice Date May 14/68

Salesman _____

Order No. _____

Order Date _____

Qty.	Description	Unit Price	Amount
3	100 # cyl	35 00	105 00
3	caps	1 75	5 25
			110 25
			5 51
			\$ 115 76

BETHEX EXPLORATIONS LTD. (N.P.L.)
 Property TASEKO
 Project F-26
 Expense 303
 Approved by [Signature]

Tag No. □ □ □ □ □ □ □ □

REMARKS:

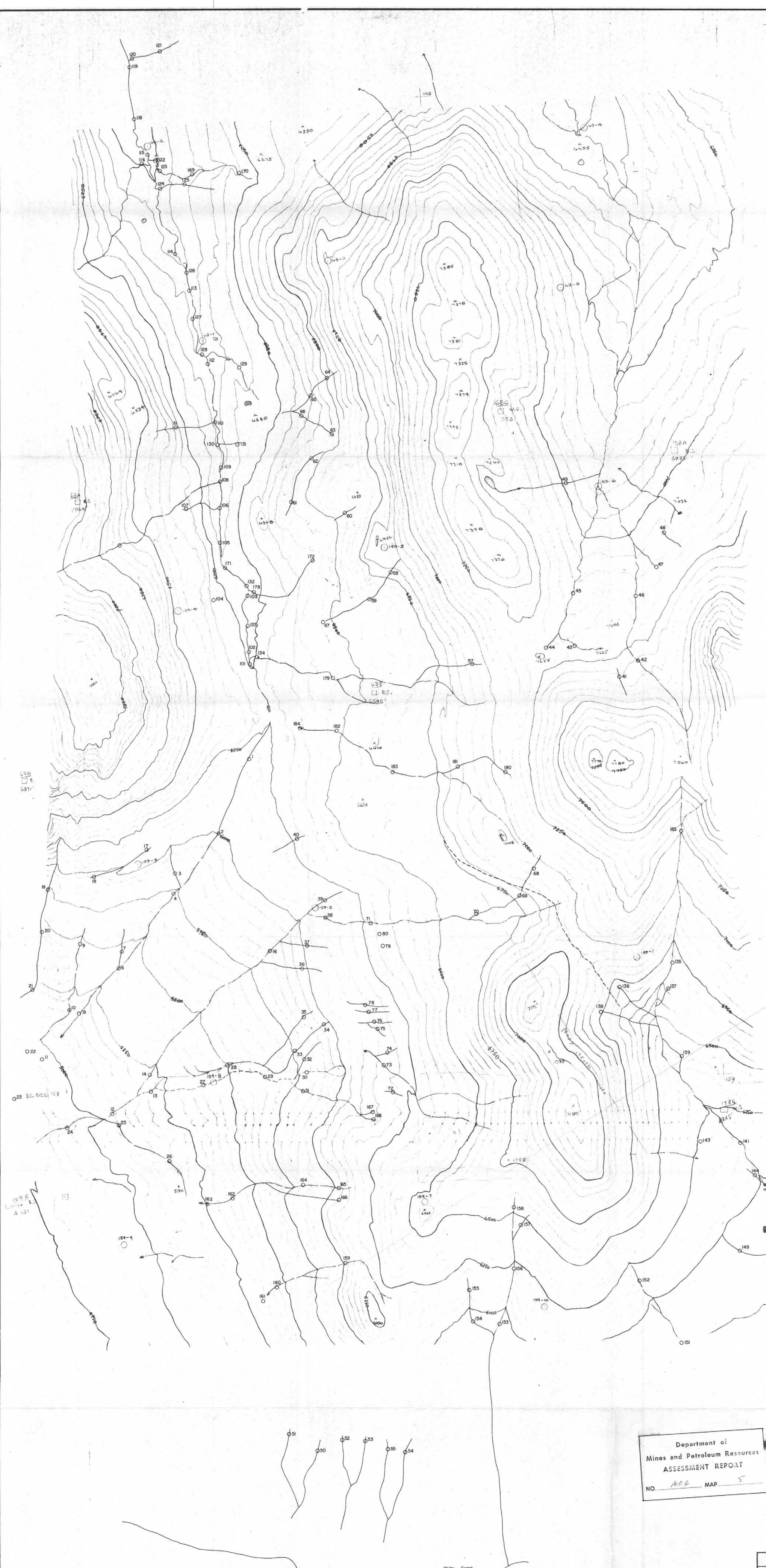
RECEIVED BY H. Marko

CREDIT OK

ON ORDER

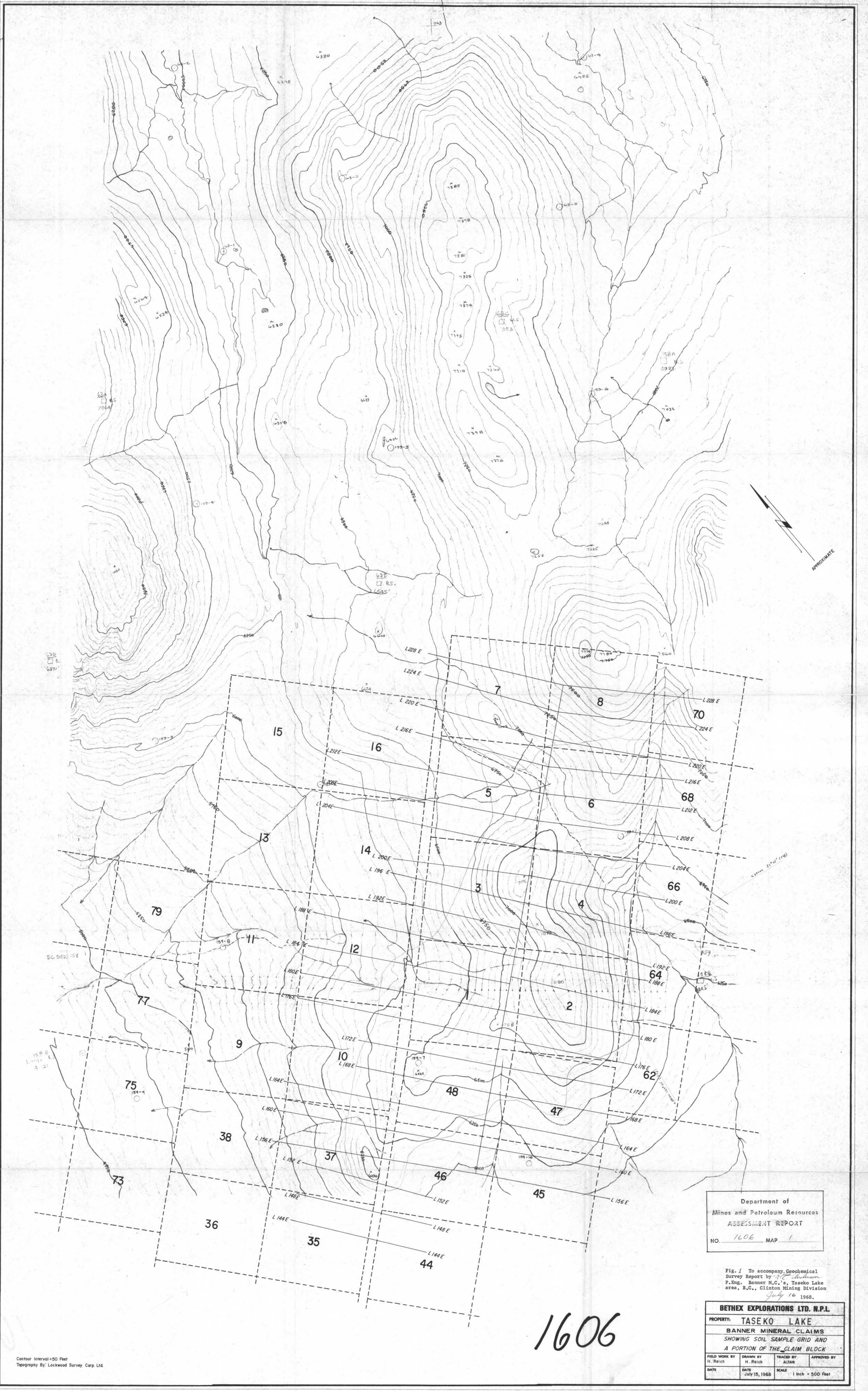
INVOICE No. - 6887

All claims for shortage and adjustment must be made within 10 days. Defective material must be returned Prepaid within 30 days. A 10% handling charge may be made on all goods returned for credit. Secure written permission before returning such goods.



Department of
Mines and Petroleum Resources
ASSESSMENT REPORT
NO. 1606 MAP 5

1606



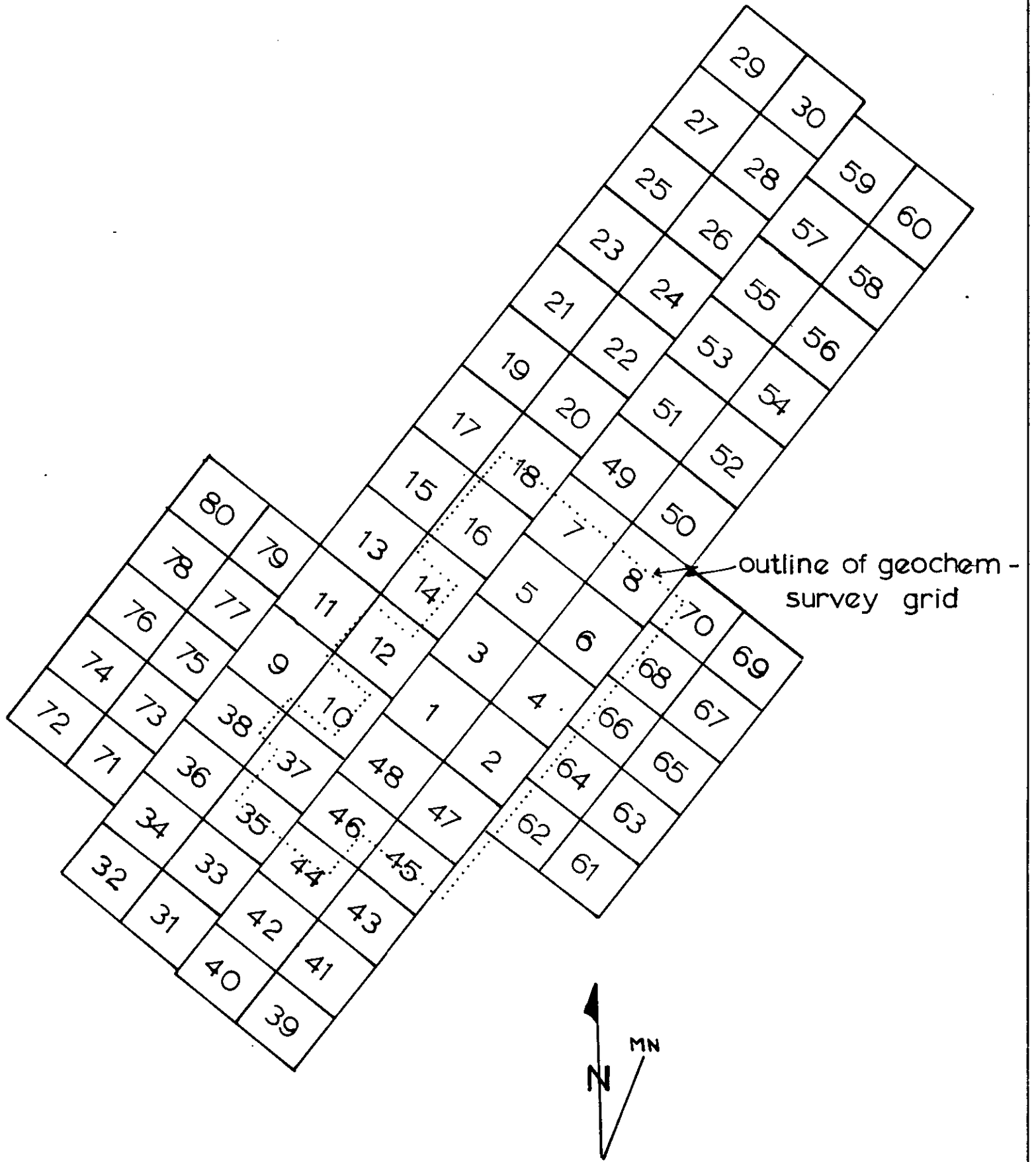
Department of
 Mines and Petroleum Resources
 ASSESSMENT REPORT
 NO. 1606 MAP 1

Fig. 1 To accompany Geochemical
 Survey Report by *F. Eng. Banner H.C.'s, Taseko Lake
 area, B.C., Clinton Mining Division
 July 10 1968.*

1606

BETHEX EXPLORATIONS LTD. N.P.L.			
PROPERTY: TASEKO LAKE			
BANNER MINERAL CLAIMS			
SHOWING SOIL SAMPLE GRID AND			
A PORTION OF THE CLAIM BLOCK			
FIELD WORK BY H. Reich	DRAWN BY H. Reich	TRACED BY ALTAIR	APPROVED BY
DATE JULY 15, 1968	SCALE 1 inch = 500 Feet		

Contour Interval = 50 Feet
 Topography by: Lockwood Survey Corp. Ltd.



Department of
Mines and Petroleum Resources
ASSESSMENT REPORT

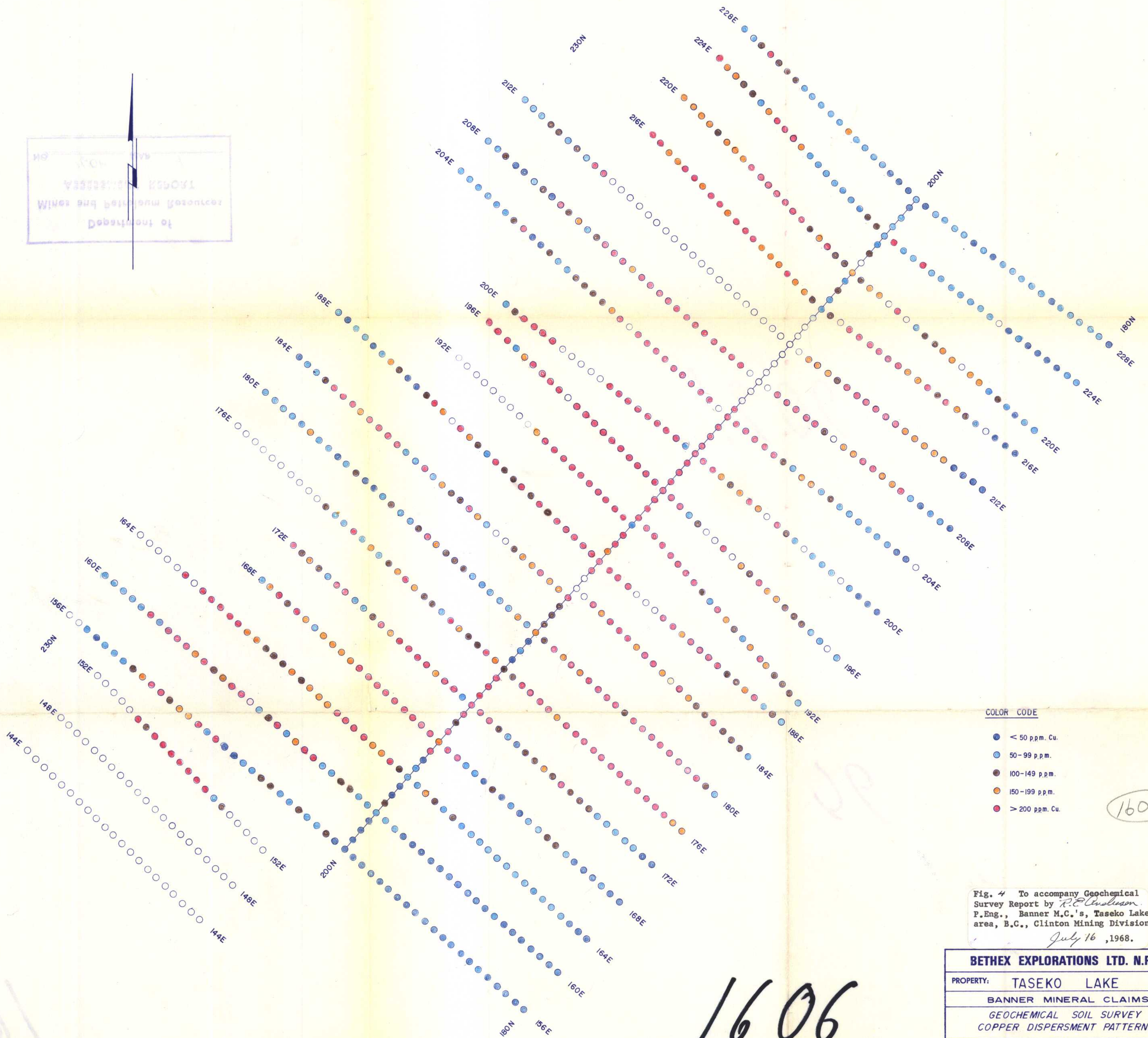
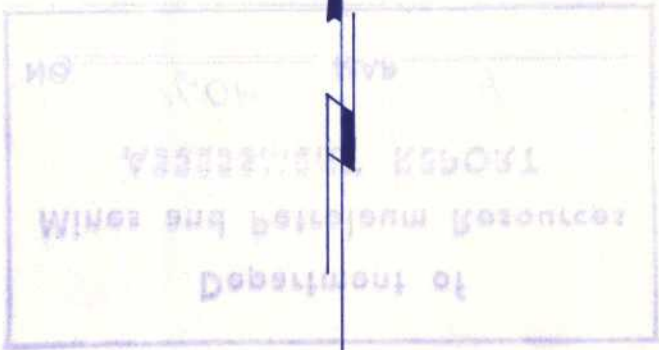
NO. *1606* MAP *2*

1606

Chita
Creek

Fig. 2 To accompany Geochemical
Survey Report by *R. E. Anderson*
P. Eng. Banner M.C.'s, Taseko Lake
area, B.C., Clinton Mining Division
July 16, 1968

BETHEX EXPLORATIONS LTD. N.P.L.			
PROPERTY: TASEKO LAKE CLAIM MAP BANNER GROUP			
FIELD WORK BY	DRAWN BY HMR	TRACED BY	APPROVED BY
DATE	DATE 7-15-68	SCALE 1" = 2500'	



COLOR CODE

- < 50 p.p.m. Cu.
- 50-99 p.p.m.
- 100-149 p.p.m.
- 150-199 p.p.m.
- > 200 p.p.m. Cu.

1606

Fig. 4 To accompany Geochemical Survey Report by R.C. Anderson, P.Eng., Banner M.C.'s, Taseko Lake area, B.C., Clinton Mining Division
 July 16, 1968.

BETHEX EXPLORATIONS LTD. N.P.L.

PROPERTY: TASEKO LAKE

BANNER MINERAL CLAIMS

GEOCHEMICAL SOIL SURVEY
COPPER DISPERSMENT PATTERNS

FIELD WORK BY H. Reich	DRAWN BY H. Reich	TRACED BY ALTAIR	APPROVED BY
DATE	DATE July 15, 1968	SCALE 1 Inch = 500 Feet	

1606