

16 90

UNITED COPPER CORPORATION LTD.  
Silver Claim Groups Magnetometer Survey

ALRAE ENGINEERING LTD.

September 25, 1968

TO PROTECT OUR CLIENTS, THE PUBLIC AND OURSELVES, ALL REPORTS ARE SUBMITTED AS THE CONFIDENTIAL PROPERTY OF CLIENTS AND AUTHORIZATION FOR PUBLICATION OF STATEMENTS, CONCLUSIONS AND EXTRACTS FROM OUR REPORTS MUST RECEIVE OUR WRITTEN APPROVAL.

## TABLE OF CONTENTS

	Page
INTRODUCTION . . . . .	1
LOCATION AND ACCESS . . . . .	1
CLAIMS . . . . .	1
GEOLOGICAL SETTING . . . . .	2
MAGNETOMETER SURVEY . . . . .	2
INTERPRETATION OF MAGNETIC SURVEY . . . . .	3
CONCLUSIONS AND RECOMMENDATIONS . . . . .	4
CERTIFICATE . . . . .	5
APPENDIX "A" . . . . .	6
APPENDIX "B" . . . . .	7

### MAPS

	Scale
Index to Map Sheets	1" = 1,600'
Magnetometer Survey - Base line A-1	1" = 200'
- Base line A-2	1" = 200'
- Base line B-1	1" = 400'
- Base line B-2	1" = 200'
- Base line C	1" = 400'
- Base line D	1" = 400'
- Base line E and F	1" = 400'
Magnetic Contours and Topography	
Overlay Sheets - Base line A-1	1" = 200'
- Base line A-2	1" = 200'
- Base line B-1	1" = 400'
- Base line B-2	1" = 200'
- Base line C	1" = 400'
- Base line D	1" = 400'
- Base line E and F	1" = 400'

TO PROTECT OUR CLIENTS, THE PUBLIC AND OURSELVES, ALL REPORTS ARE SUBMITTED AS THE CONFIDENTIAL PROPERTY OF CLIENTS AND AUTHORIZATION FOR PUBLICATION OF STATEMENTS, CONCLUSIONS AND EXTRACTS FROM OUR REPORTS MUST RECEIVE OUR WRITTEN APPROVAL.

## INTRODUCTION

During the period May 26th to September 15th, 1968, a crew of men, varying in number from two to seven, prepared base lines and over 60 miles of chained and flagged grid lines. Grid lines were spaced from 200 to 800 feet apart and readings were taken at points from 50 feet to 100 feet along the lines. Greater detail was centred on anomalous areas. Various maps of each of the base line areas surveyed are included with this report. Overlays of the maps show claim boundaries, topographic features, and contour presentation of the magnetic survey.

## LOCATION AND ACCESS

The Silver project claims are located approximately 14 miles northwest of Little Fort, B.C. and some 70 miles north of Kamloops, B.C. Ready access is provided by logging roads through the claim group from a point ten miles west of Little Fort, on the road from Little Fort to 100 Mile House. Paved highway leads from Vancouver through Kamloops to Little Fort. Total distance from Vancouver to the claim group is approximately 350 miles.

A tent camp established at Silver Lake, near the centre of the claim group, provided accommodation for the field crews during the summer season.

## CLAIMS

Claims and their record numbers are as follows:

<u>CLAIM NAME</u>	<u>RECORD NUMBER</u>
Bill 1	66017
Bill 2 Fr.	66018
Bill 3 & 4	66019 & 66020
S.P. 1 - 6	61209 - 61214
Mae 1 - 4	61215 - 61218
Silver 1 - 56	54734 - 54789
Silver 101 - 136	68637 - 68672

All 106 claims are within the Kamloops Mining Division.

TO PROTECT OUR CLIENTS, THE PUBLIC AND OURSELVES, ALL REPORTS ARE SUBMITTED AS THE CONFIDENTIAL PROPERTY OF CLIENTS AND AUTHORIZATION FOR PUBLICATION OF STATEMENTS, CONCLUSIONS AND EXTRACTS FROM OUR REPORTS MUST RECEIVE OUR WRITTEN APPROVAL.

### GEOLOGICAL SETTING

The Silver claims are underlain by the Upper Triassic Nicola volcanics and sediments which are in fault contact with younger Lower and Middle Jurassic volcanics and sediments. Nicola rocks underlie the southwestern section of the claim group and the area in which the prominent magnetic anomaly appears.

Bulldozer trenching of this anomalous area has indicated the anomaly to be caused by massive magnetite and pyrrhotite from 10 to 100 feet wide containing disseminated pyrite and chalcopyrite. Pyrite and chalcopyrite also occur along fault zones and fracture planes within this skarn-like mineralization. Garnet and epidote are also common skarn minerals within this zone.

### MAGNETOMETER SURVEY

Reconnaissance and detailed magnetic survey work was conducted over the entire claim group during the 1968 field season. A Sharpe fluxgate magnetometer, model MF 1 was used to take instrument readings each 100 feet along lines varying from 200 to 800 feet apart. Closer line spacing was used in anomalous areas.

Base lines were used for base station magnetic controls and the central base station was established at the Silver Lake camp site. All readings throughout the entire grid survey were controlled to the same base level. Diurnal corrections were applied to all readings as were day-to-day instrument corrections.

Corrected readings are plotted on the accompanying map sheets and the overlay sheets present contouring of the same readings together with topographical features.

Grid lines for this survey were prepared by blazing and chaining compass lines through the bush from base lines at 200 to

800 foot line spacing. All lines were marked with numbered plastic flagging at stations 100 feet apart.

#### INTERPRETATION OF MAGNETIC SURVEY

The long and linear anomaly on the claims Silver 1 - 12 has now been exposed at various points by bulldozer trenching and is caused by magnetite and pyrrhotite mineralization in a skarn zone. Pyrite and chalcopyrite are occasionally found within the pyrrhotite zone and chalcopyrite has been noted in the vicinity of bulldozer trench #9 to occur disseminated in a siliceous and unaltered rock on the northern flank of the anomalous high. Detailed magnetic work on this anomaly indicates the magnetite-pyrrhotite zone to vary in width from 10 to 100 feet. Magnetite, where encountered in several trenches, is very massive and irregular in outline.

Boulders from the magnetite outcrops occur in the glacial overburden and may account for some of the erratic high magnetic values encountered in this area.

The valid magnetic high in the vicinity of trench #11 on Silver 51 claim is caused by magnetite bearing basic chloritic gabbro(?). There are no sulphides associated with this rock type.

The remaining portion of the claim group exhibits only normally varying magnetic responses over a series of volcanics and sediments. The detail of this survey indicates that no major anomalies have been overlooked. The 800 foot line spacing at the southeastern end of the claim group was established to discover if the southeasterly extension of the anomaly appearing on claims Silver 1 - 12 might extend through this area. As may be seen on the maps, it obviously does not.

CONCLUSIONS AND RECOMMENDATIONS

Initial testing of the linear magnetic anomaly on claims Silver 1 - 12 indicates the anomaly to be caused by magnetite and pyrrhotite containing lesser amounts of pyrite and chalcopyrite. Bulldozer trenches have been widely spaced to indicate the cause of the anomaly and expose typical mineralization. Chalcopyrite content is below commercial grade in the exposures so far developed but occurs in significantly interesting amounts in trenches #2 and #9. Further exploration of these two areas along the trend of the anomaly is warranted and should take the form of shallow diamond drilling.

No copper mineralization has been encountered on the claim group which is not associated with pyrrhotite and magnetite. It is therefore quite unlikely that significant copper mineralized zones will be found in the portions of the claim group which are magnetically featureless. It is recommended, however, that the claims be held by applying the cost of field work which has been done to date to assessment work on the claims.

Respectfully submitted:

  
Rae G. Jury, P. Eng.

CERTIFICATE

I, Rae G. Jury, of the City of Vancouver, British Columbia, do hereby certify that:

1. I am a consulting geological engineer.
2. I am a graduate of Queen's University in Kingston (B. Sc. in Geological Sciences, 1957).
3. I am a registered Professional Engineer of the Provinces of British Columbia and Ontario and also a member of the Canadian Institute of Mining and Metallurgy.
4. I have practiced my profession since 1957 with Labrador Mining & Exploration Company, Quemont Mining Corporation, Canadian Johns-Manville Co. Ltd., and Alrae Engineering Ltd.
5. I have examined trenching and exposed mineralization on the Silver 1 - 12 claims on July 15, and August 19, 20, 24, 1968 and have supervised survey work on the claims from May 26, 1968 to September 15, 1968.
6. The locations of the above claims have been checked by field personnel of Alrae Engineering Ltd. and have been found to be located in accordance with the B.C. Mineral Act. Claims Silver 1, 3, 5, 8 and 9 were located on the same day as TC 40, 42, 44, 46 and 48, owned by Anaconda American Brass Ltd. and the two groups partially overlap. The important magnetic anomaly is clearly on the United Copper Corporation Ltd. property.
7. I have not received, nor do I expect to receive, any interest, either directly or indirectly, in the properties or securities of United Copper Corporation Ltd. (N.P.L.)

DATED AT VANCOUVER, this 25th day of September, A.D. 1968.

  
Rae G. Jury P. Eng.

APPENDIX "A"

TIME AND COST DISTRIBUTION  
Magnetometer Survey - Baselines B, C, D, E, F  
Centre and Bill Groups

<u>Personnel</u>	<u>Occupation</u>	<u>Dates</u> <u>1968</u>	<u>Wages</u>
G. House	Field Supervisor	July 25-31, Aug. 1-3	\$ 583.40
W. Havdale	Geophysicist Assistant	June 21-30, July 1-31 August 1-31	2,438.15
D. Crocker	Line Cutter	June 21-30, July 12-31, August 1-13	1,123.12
J. Coyne	Geophysicist	July 1-31 Aug. 1-13, 18-31, Sept. 1-15	3,083.82
B. Goodwin	Field Assistant	Aug. 28-31, Sept. 1-4	246.72
N. Grundy	Field Assistant	August 15-31	385.78
G. Moore	Field Assistant	August 22-27	129.24
J. O'Loan	Line Cutter	July 23-31, Aug. 1-3, August 18-31	755.14
J. Fulton	Line Cutter	June 16-17, July 11-31, August 1-3	761.80
M. Payne	Draftsman	July 11, 29, 30 August 26, 27, 28	203.75
R. Jury	Supervisor		<u>870.00</u>
			\$ <u>10,580.92</u>
Rental - Equipment - Magnetometer s/n 21104		\$ 494.00	
- Chain Saw and Instruments		<u>131.00</u>	<u>625.00</u>
		TOTAL	\$ <u><u>11,205.92</u></u>

And I make this solemn declaration conscientiously believing it to be true, and knowing that it is of the same force and effect as if made under oath and by virtue of the "Canada Evidence Act."

Declared before me at the City  
of Vancouver, in the  
Province of British Columbia, this 1st  
day of October 1968, A.D.

*Rae L. Jury*

*W. David Black*

A-Commissioner for taking Affidavits for British Columbia or  
A Notary Public in and for the Province of British Columbia.



APPENDIX "B"

TIME AND COST DISTRIBUTION  
Magnetometer Survey  
Anomaly Group

<u>Personnel</u>	<u>Occupation</u>	<u>Dates 1968</u>	<u>Wages</u>
G. House	Field Supervisor	May 26-31, June 1-17, July 7-12, 24	\$ 1,750.20
W. Havdale	Geophysicist Assistant	May 23-31, June 1-20	1,017.19
D. Crocker	Line Cutter	May 30-31, June 1-20	630.18
J. Coyne	Geophysicist	June 3-24	1,012.48
J. O'Loan	Line Cutter	July 19-22	116.54
M. Payne	Draftsman	June 20, July 23, 24, 25, 26 Aug. 28	188.75
R. Jury	Supervision		<u>580.00</u>
			\$ <u>5,295.34</u>
Rental - Equipment - Magnetometer s/n 21104		\$ 276.00	
- Chain Saw and Instruments		<u>73.00</u>	<u>349.00</u>
		<b>TOTAL</b>	\$ <u><u>5,644.34</u></u>

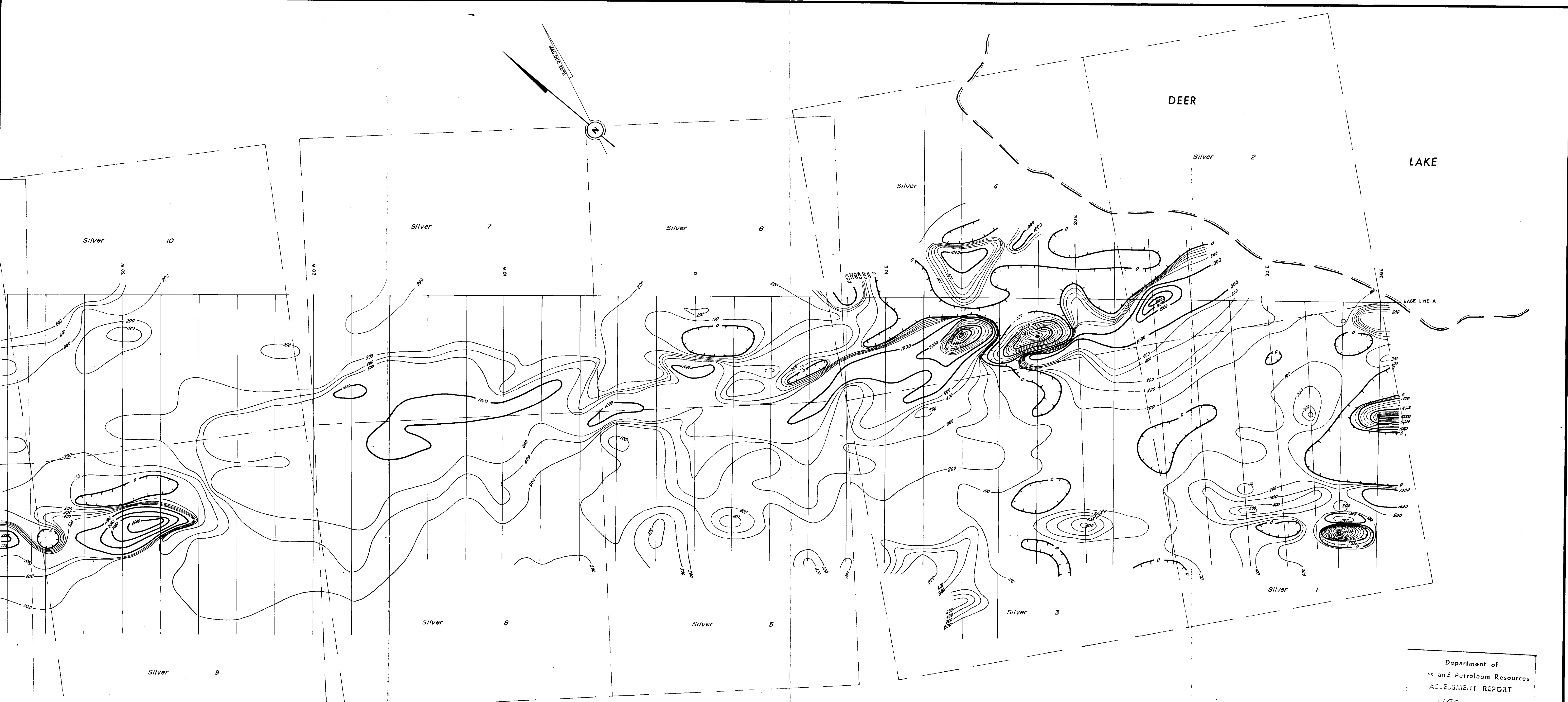
And I make this solemn declaration conscientiously believing it to be true, and knowing that it is of the same force and effect as if made under oath and by virtue of the "Canada Evidence Act."

Declared before me at the city  
of Vancouver, in the  
Province of British Columbia, this 1<sup>ST</sup>  
day of October 1968, A.D.

*Rae L. Jury*

W. David Black

A Commissioner for taking Affidavits for British Columbia or  
A Notary Public in and for the Province of British Columbia.



NOTE: Contours shown -13000 to -1000 of intervals of 1000.  
 0 to 500 " " = 100.  
 1000 to 12000 " " = 1000

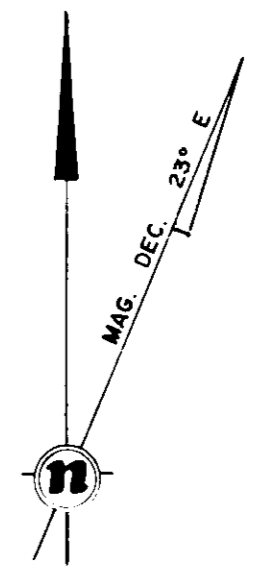
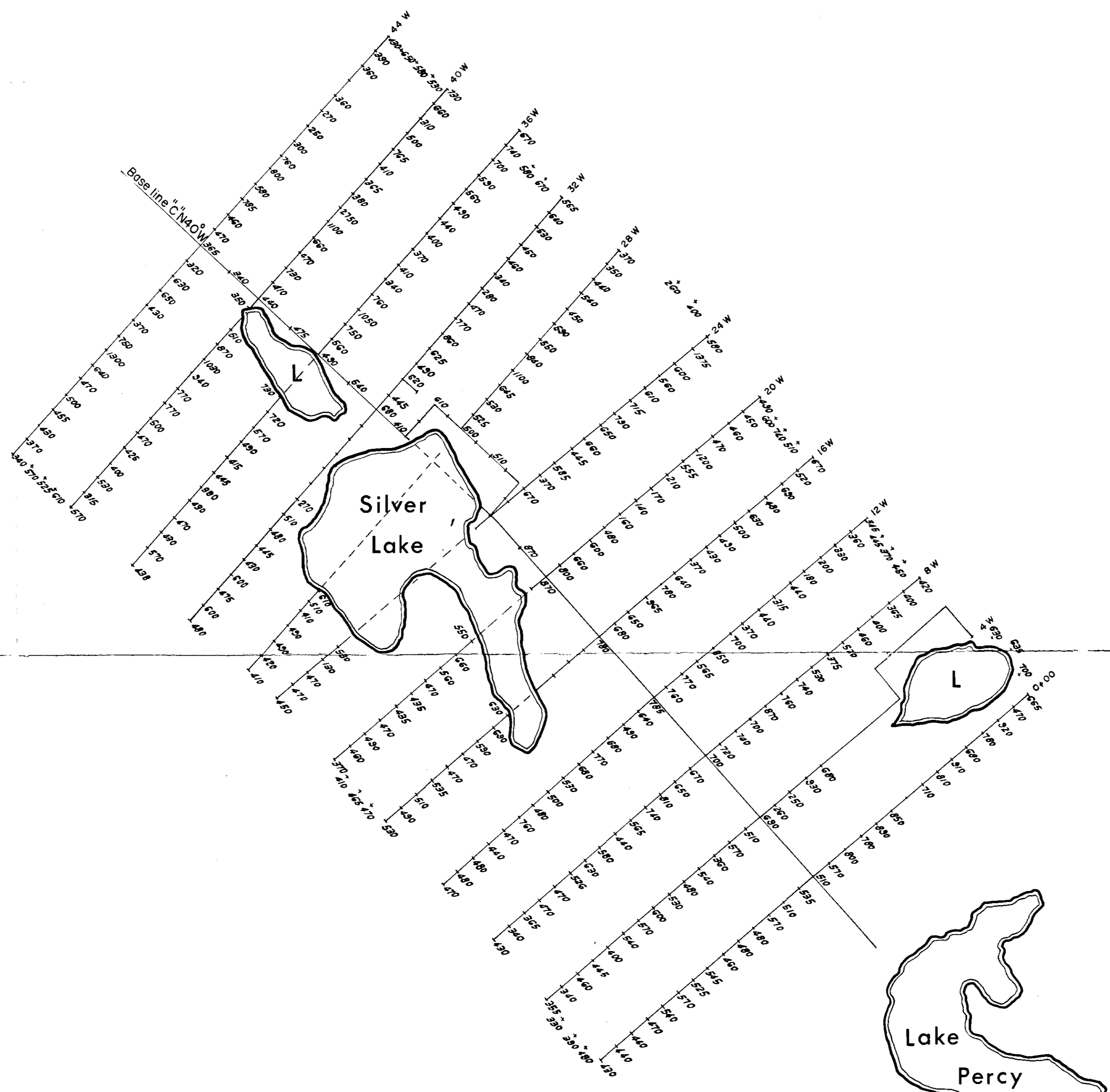
NOTE: TO ACCOMPANY GEOPHYSICAL REPORT BY R. S. JURY PENS.  
 ON THE SILVER, SP, MAE, & BILL CLAIMS, SILVER LAKE AREA,  
 KAMLOOPS MINING DIVISION, DATED, SEPT 25, 1968.

*R. S. Jury*

1690

Department of  
 Lands and Petroleum Resources  
 ASSESSMENT REPORT  
 1690 MAP

UNITED COPPER CORPORATION LTD.	
MAGNETIC CONTOUR OVERLAY	
SILVER 1-12 & 109-114 CLAIMS	
ALRAE ENGINEERING LTD. GEOLOGISTS AND ENGINEERS VANCOUVER, B. C.	
DESIGNED.....	SCALE: HOR. 1" = 200'
DRAWN..... M. P.	VERT. 1" = 200'
CHECKED..... R. G. J.	DWG. No. 9200-17
DATE..... JULY, 68	



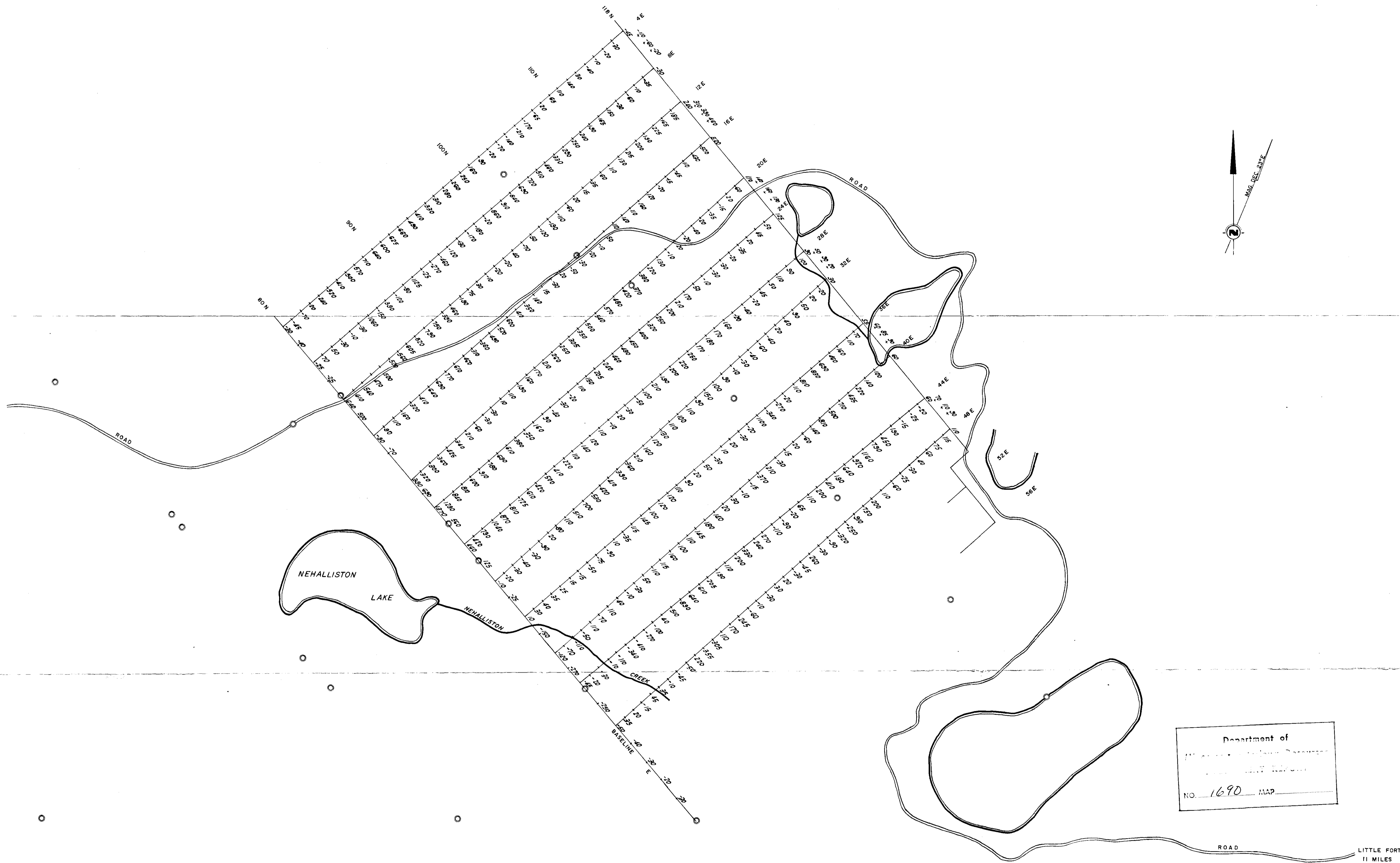
NOTE: TO ACCOMPANY GEOPHYSICAL REPORT BY R. G. JURY P. ENG.  
ON THE SILVER, SP, MAE & BILL CLAIMS, SILVER LAKE AREA,  
KAMLOOPS MINING DIVISION, DATED SEPT. 25, 1968.

*R. G. Jury*

Department of  
Mines and Petroleum Resources  
ASSIGNMENT REPORT  
NO. 1690 MAP

UNITED COPPER CORPORATION LTD.	
MAGNETOMETER SURVEY	
IN SILVER 13 TO 20 CLAIMS	
ALRAE ENGINEERING LTD. GEOLOGISTS AND ENGINEERS VANCOUVER, B. C.	
DESIGNED..... G. H.	SCALE: HOR. 1" = 400'
DRAWN..... M. P.	VERT.
CHECKED..... R. G. J.	DWG. No. 9200-20
DATE..... JULY 68	

1690



Department of  
 Mines and Technical Surveys  
 Geological Survey of Canada  
 NO. 1690 MAP

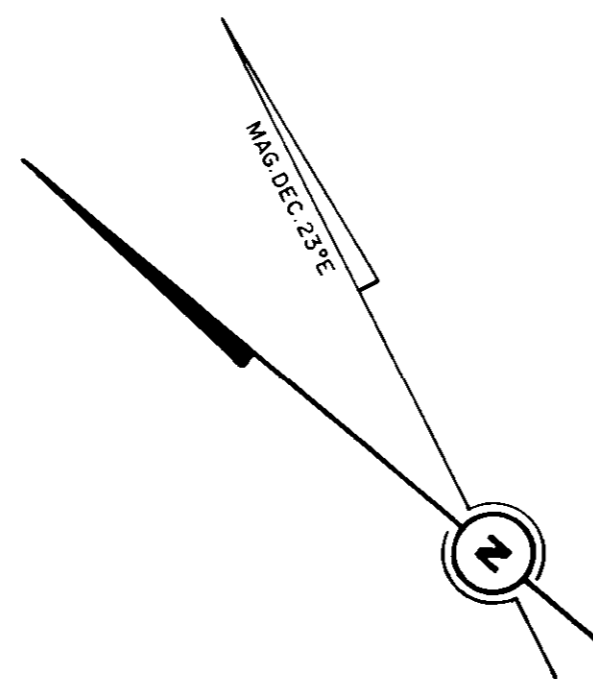
NOTE: TO ACCOMPANY GEOPHYSICAL REPORT BY R. G. JURY P. ENG.  
 ON THE SILVER, SP, MAE & BILL CLAIMS, SILVER LAKE AREA,  
 KAMLOOPS MINING DIVISION, DATED SEPT. 25, 1968.

*R. G. Jury*

UNITED COPPER CORPORATION LTD.	
MAGNETOMETER SURVEY	
SILVER LAKE PROPERTY	
BILL 1-4 SP, 1-6 MAE 1-14 CLAIMS.	
ALRAE ENGINEERING LTD. GEOLOGISTS AND ENGINEERS VANCOUVER, B. C.	
DESIGNED... R. M.	SCALE: HOR. 1" = 400'
DRAWN... M. P.	VERT.
CHECKED... R. G. J.	DWG. No. 9200-22
DATE... SEPT. 68	(3)

1690

LITTLE FORT  
11 MILES



T.C. 95

Silver 11

TC 97

32 W

M 106

72 W

60 W

M 105

40 W

Silver 110

Silver 112

Silver 114

Silver 116

Silver 109

Silver 12

Silver 111

Silver 113

Silver 115

NOTE: TO ACCOMPANY GEOPHYSICAL REPORT BY R. G. JURY P. ENG. ON THE SILVER, SP, MAE, & BILL CLAIMS, SILVER LAKE AREA, KAMLOOPS MINING DIVISION, DATED SEPT. 25 1968

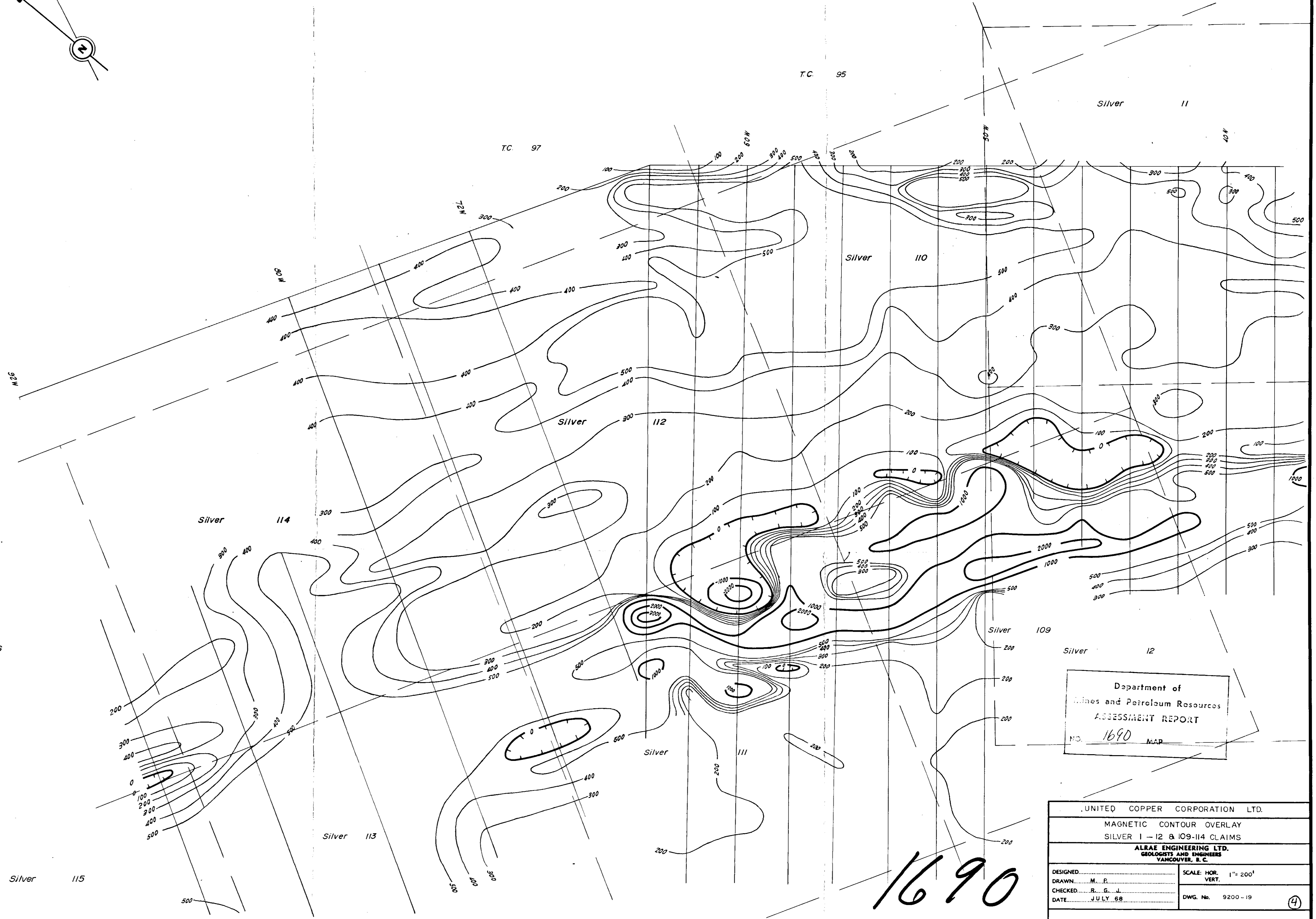
*R. G. Jury*

Note: Contours shown - 2000 to 0 at intervals of 1000  
0 to 500 " " " 100  
1000 to 3000 " " " 1000

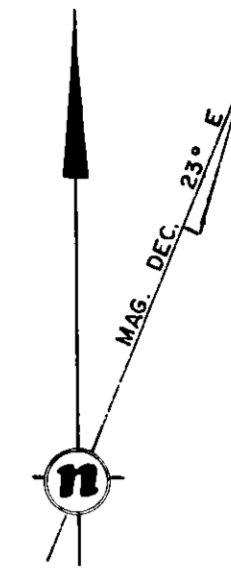
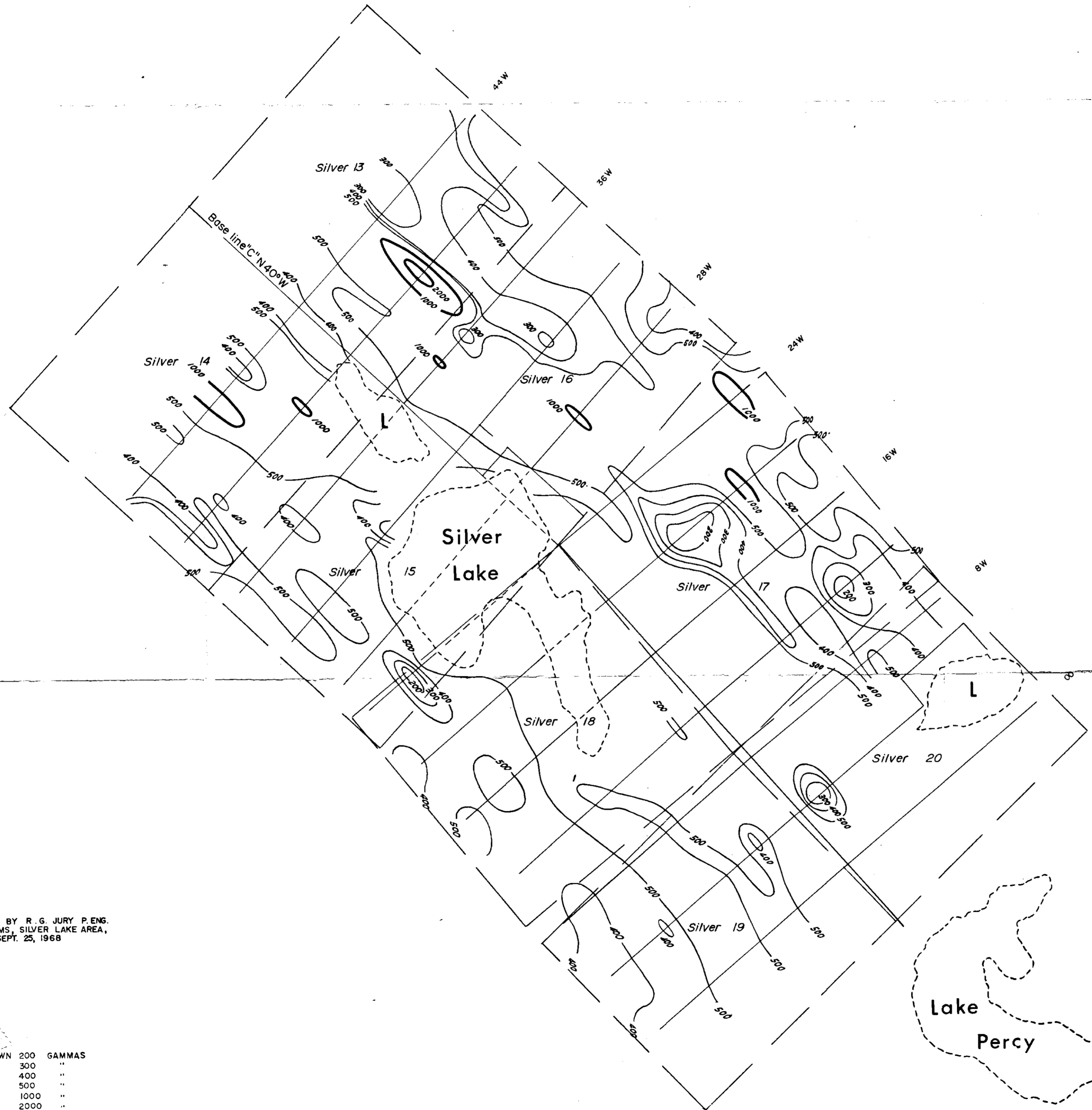
Department of  
Mines and Petroleum Resources  
ASSESSMENT REPORT  
NO. 1690 MAP

UNITED COPPER CORPORATION LTD.	
MAGNETIC CONTOUR OVERLAY	
SILVER 1 - 12 & 109-114 CLAIMS	
ALAE ENGINEERING LTD. GEOLOGISTS AND ENGINEERS VANCOUVER, B. C.	
DESIGNED _____	SCALE: HOR. 1" = 200'
DRAWN M. P.	VERT. _____
CHECKED R. G. J.	DATE JULY 68
DATE JULY 68	DWG. No. 9200-19

1690







NOTE: TO ACCOMPANY GEOPHYSICAL REPORT BY R. G. JURY P. ENG.  
ON THE SILVER, SP, MAE & BILL CLAIMS, SILVER LAKE AREA,  
KAMLOOPS MINING DIVISION, DATED SEPT. 25, 1968

*R. G. Jury*

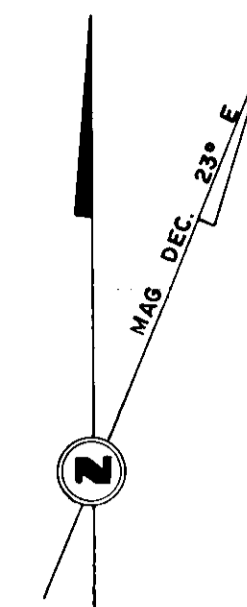
NOTE CONTOURS SHOWN

200	GAMMAS
300	"
400	"
500	"
1000	"
2000	"

Department of  
Mines and Petroleum Resources  
ASSESSMENT REPORT  
NO. 1690 MAP

UNITED COPPER CORPORATION LTD.	
MAGNETIC CONTOUR OVERLAY IN SILVER 13 TO 20 CLAIMS	
ALRAE ENGINEERING LTD. GEOLOGISTS AND ENGINEERS VANCOUVER, B. C.	
DESIGNED..... G. H.	SCALE: HOR. 1" = 400
DRAWN..... M. P.	VERT.
CHECKED..... R. G. J.	DWG. No. 9200-21
DATE..... JULY, 68.	(5)

1690



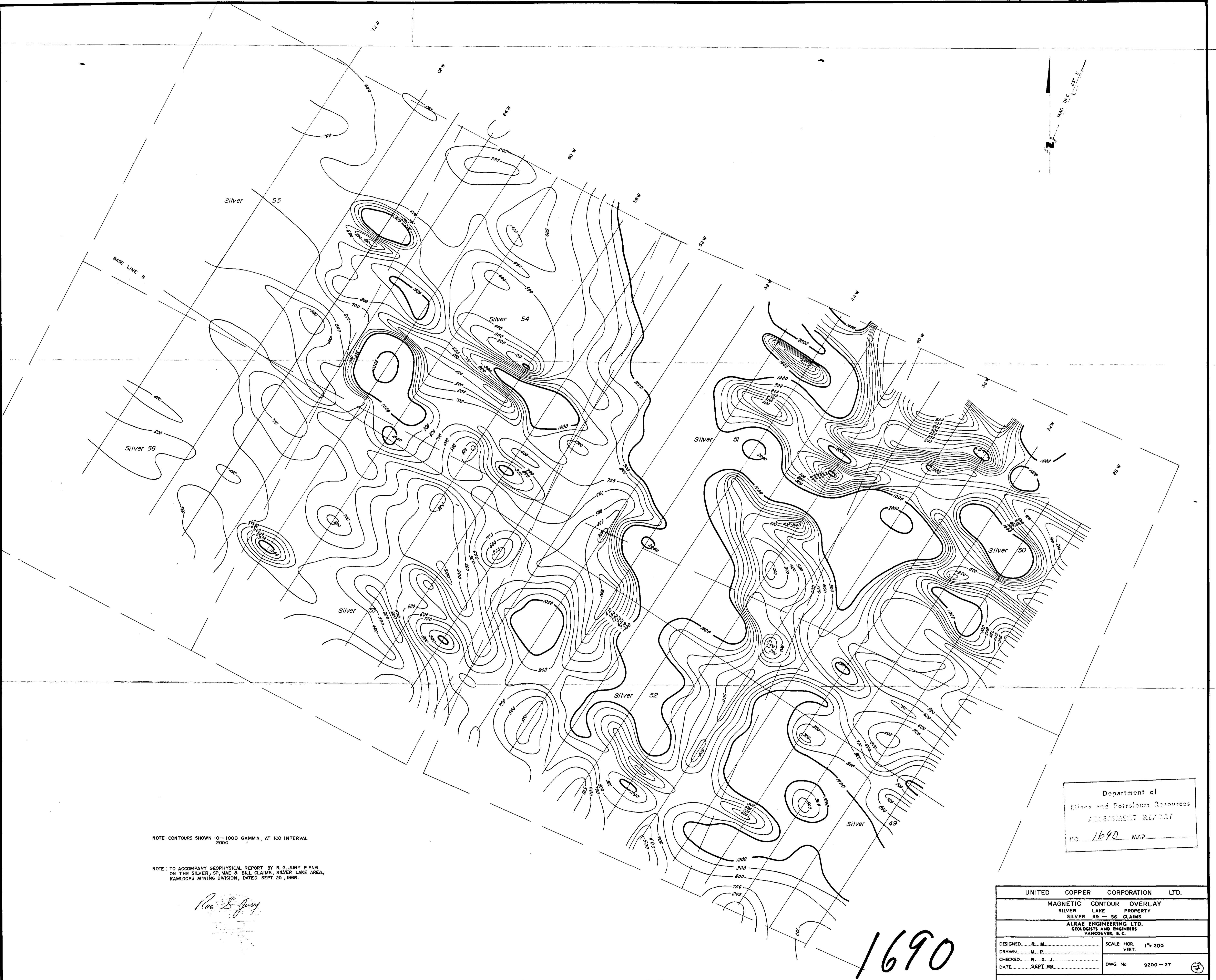
NOTE: TO ACCOMPANY GEOPHYSICAL REPORT BY R. G. JURY P. ENG.  
ON THE SILVER, SP, MAE & BILL CLAIMS, SILVER LAKE AREA,  
KAMLOOPS MINING DIVISION, DATED SEPT. 25, 1968.

*R. G. Jury*

Department of  
Mines and Technical Resources  
ASSESSMENT REPORT  
NO. 1690

UNITED COPPER CORPORATION LTD.	
MAGNETOMETER SURVEY SILVER LAKE PROPERTY SILVER 49 - 56 CLAIMS	
ALRAE ENGINEERING LTD. GEOLOGISTS AND ENGINEERS VANCOUVER, B. C.	
DESIGNED... R. M.	SCALE: HOR. 1" = 200
DRAWN... M. P.	VERT.
CHECKED... R. G. J.	DWG. No. 9200 - 26
DATE... SEPT. 68	

1690



NOTE: CONTOURS SHOWN 0-1000 GAMMA, AT 100 INTERVAL  
2000

NOTE: TO ACCOMPANY GEOPHYSICAL REPORT BY R. G. JURY P. ENG.  
ON THE SILVER, SP, MAE & BILL CLAIMS, SILVER LAKE AREA,  
KAMLOOPS MINING DIVISION, DATED SEPT. 25, 1968.

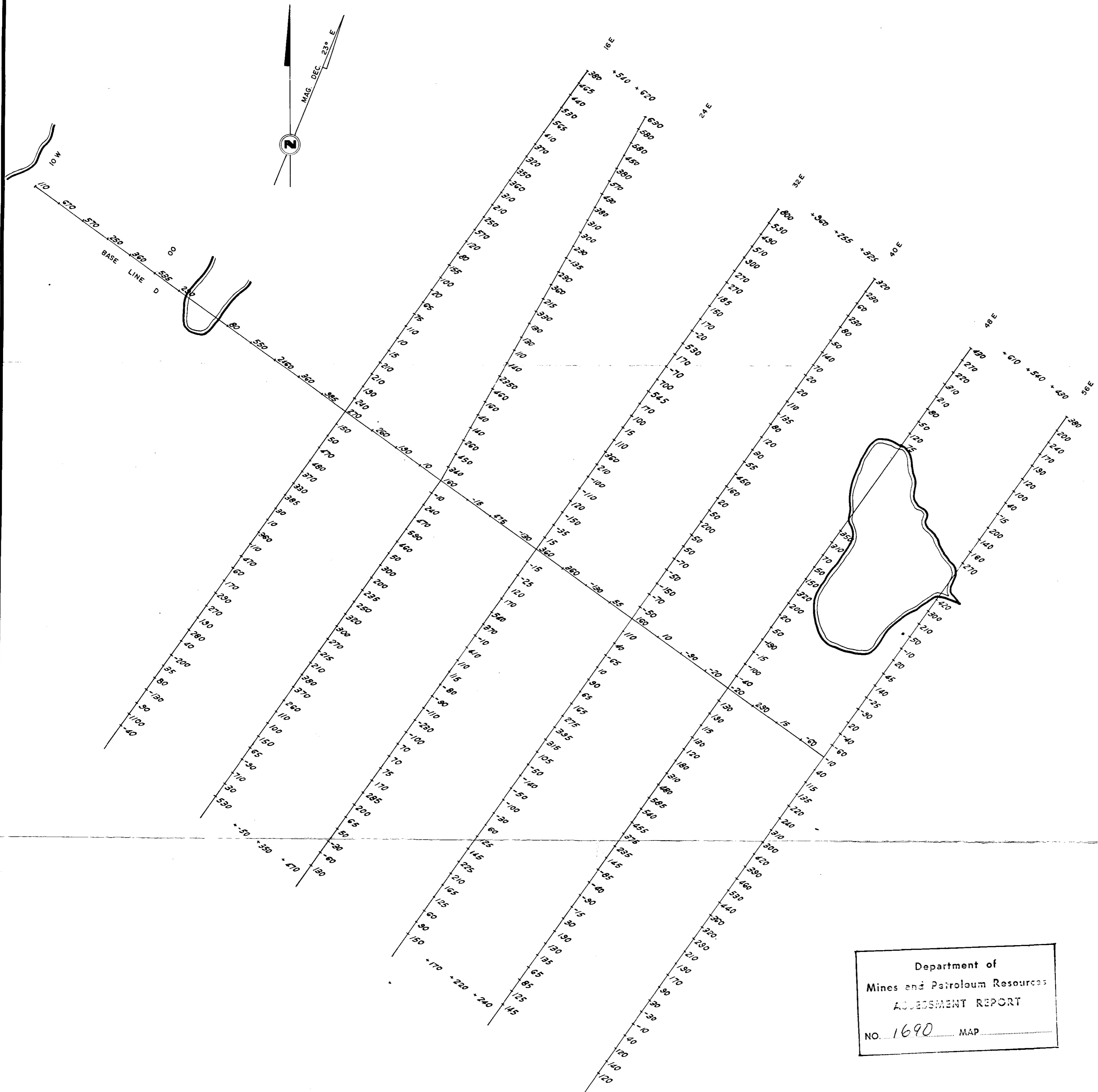
*Rae G. Jury*

Department of  
Mines and Petroleum Resources  
ASSESSMENT REPORT  
NO. 1690 MAP

1690

UNITED COPPER CORPORATION LTD.	
MAGNETIC CONTOUR OVERLAY	
SILVER LAKE PROPERTY	
SILVER 49 - 56 CLAIMS	
ALRAE ENGINEERING LTD. GEOLOGISTS AND ENGINEERS VANCOUVER, B. C.	
DESIGNED..... R. M.	SCALE: HOR. 1" = 200'
DRAWN..... M. P.	VERT. 1" = 200'
CHECKED..... R. G. J.	DWG. No. 9200-27
DATE..... SEPT. 68.	





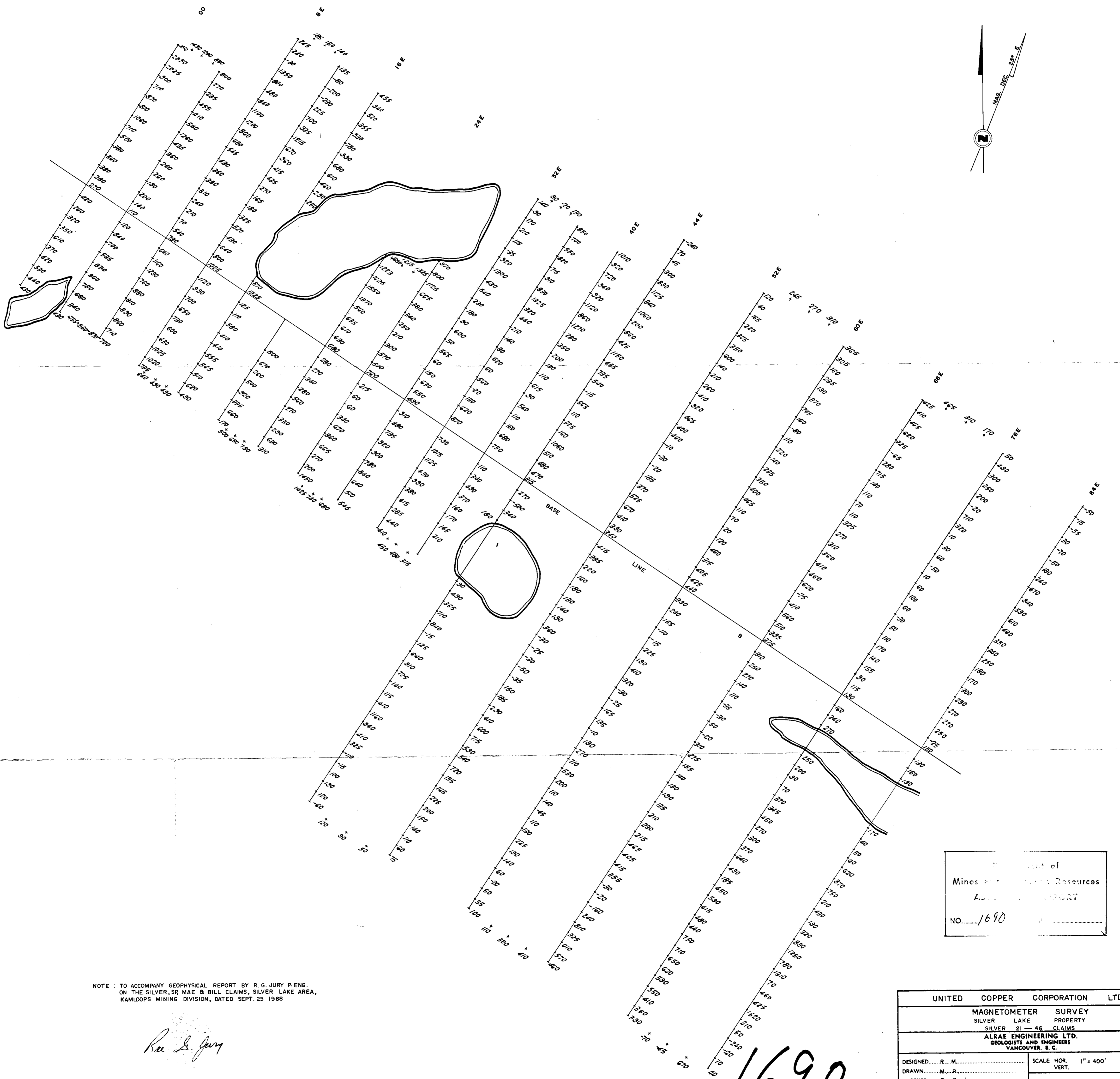
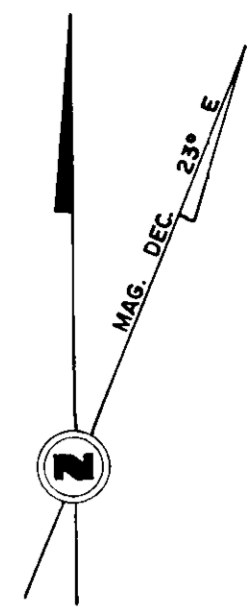
NOTE: TO ACCOMPANY GEOPHYSICAL REPORT BY R. G. JURY P. ENG.  
ON THE SILVER, SP, MAE & BILL CLAIMS, SILVER LAKE AREA,  
KAMLOOPS MINING DIVISION, DATED SEPT. 25 1968

*R. G. Jury*

1690

Department of  
Mines and Petroleum Resources  
ASSESSMENT REPORT  
NO. 1690 MAP

UNITED COPPER CORPORATION LTD.	
MAGNETOMETER SURVEY SILVER LAKE PROPERTY SILVER 121 - 136 CLAIMS	
ALRAE ENGINEERING LTD. GEOLOGISTS AND ENGINEERS VANCOUVER, B. C.	
DESIGNED..... R. G. J.	SCALE: HOR. 1" = 400'
DRAWN..... M. P.	VERT.
CHECKED..... R. G. J.	DWG. No. 9200 - 24
DATE..... SEPT. 68	



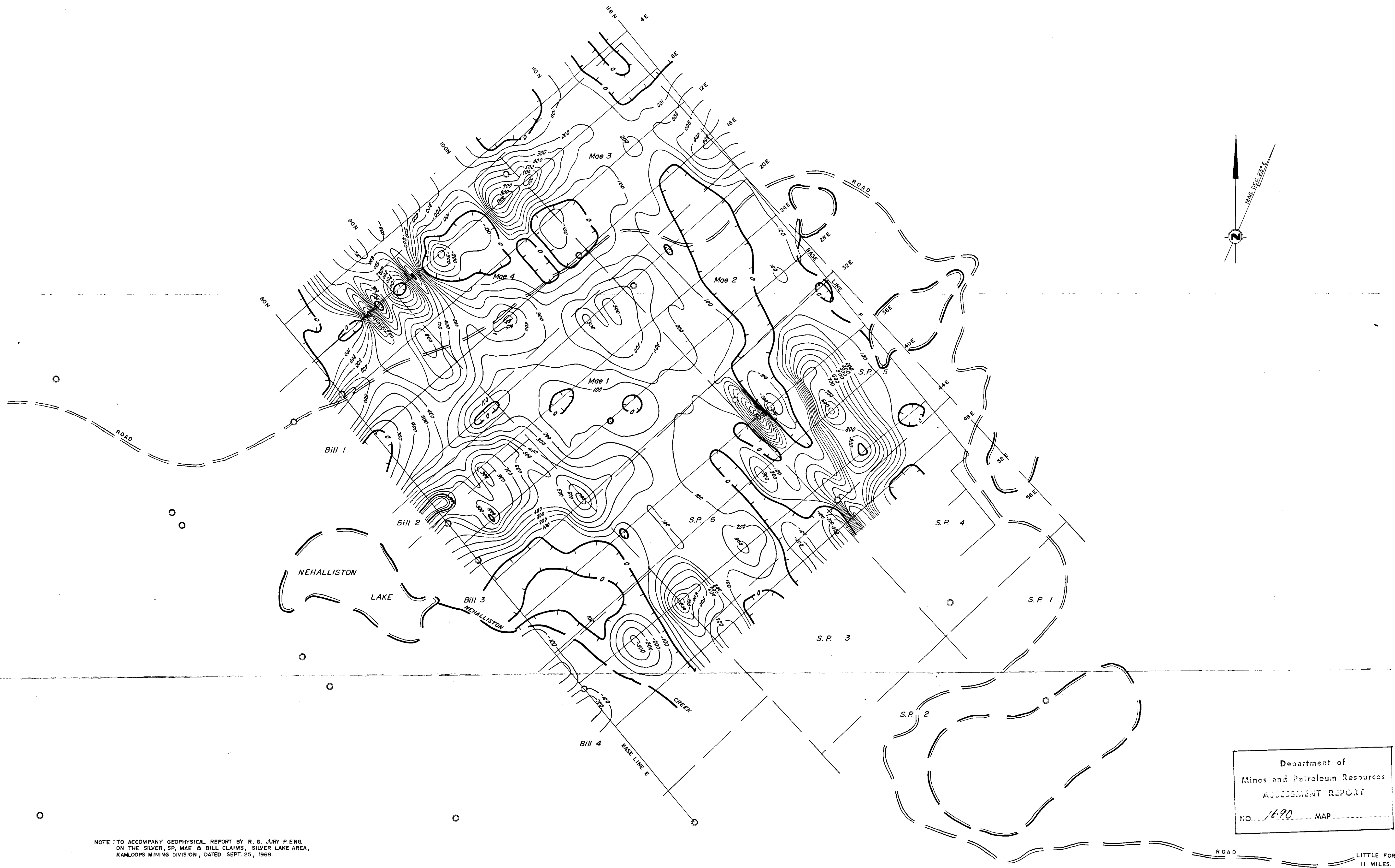
NOTE : TO ACCOMPANY GEOPHYSICAL REPORT BY R. G. JURY P. ENG.  
ON THE SILVER, SR MAE & BILL CLAIMS, SILVER LAKE AREA,  
KAMLOOPS MINING DIVISION, DATED SEPT. 25 1968

*R. G. Jury*

Department of  
Mines and Technical Resources  
ANNUAL REPORT  
NO. 1690

1690

UNITED COPPER CORPORATION LTD.	
MAGNETOMETER SURVEY	PROPERTY
SILVER LAKE	SILVER 21-46 CLAIMS
ALRAE ENGINEERING LTD. GEOLOGISTS AND ENGINEERS VANCOUVER, B. C.	
DESIGNED..... R. M.	SCALE: HOR. 1" = 400'
DRAWN..... M. P.	VERT.
CHECKED..... R. G. J.	DWG. No. 9200-28
DATE..... SEPT. 68	(9)



NOTE: TO ACCOMPANY GEOPHYSICAL REPORT BY R. G. JURY P. ENG.  
ON THE SILVER, SP, MAE & BILL CLAIMS, SILVER LAKE AREA,  
KAMLOOPS MINING DIVISION, DATED SEPT. 25, 1968.

NOTE: CONTOURS SHOWN - 400-0 GAMMAS } 100 INTERVALS  
00-1000

Department of  
Mines and Petroleum Resources  
ASSESSMENT REPORT  
NO. 1690 MAP

UNITED COPPER CORPORATION LTD.	
MAGNETIC CONTOUR OVERLAY SILVER LAKE PROPERTY BILL 1-4 S.P. 1-6 MAE 1-14 CLAIMS	
ALRAE ENGINEERING LTD. GEOLOGISTS AND ENGINEERS VANCOUVER, B. C.	
DESIGNED... R. M. ....	SCALE: HOR. 1" = 400'
DRAWN... M. P. ....	VERT.
CHECKED... R. G. J. ....	DWG. No. 9200 - 25
DATE... SEPT. 68	

1690





NOTE: CONTOURS SHOWN 0-1000 GAMMA AT 100 INTERVALS  
2000 "

NOTE: TO ACCOMPANY GEOPHYSICAL REPORT BY R. G. JURY P. ENG  
ON THE SILVER, SP, MAE & BILL CLAIMS, SILVER LAKE AREA,  
KAMLOOPS MINING DIVISION, DATED SEPT. 25, 1968.

*Rae G. Jury*

Department of  
Mines and Petroleum Resources  
ASSESSMENT REPORT  
NO. 1690 MAP

UNITED COPPER CORPORATION LTD.	
MAGNETIC CONTOUR OVERLAY SILVER LAKE PROPERTY SILVER 21-46 CLAIMS	
ALRAE ENGINEERING LTD. GEOLOGISTS AND ENGINEERS VANCOUVER, B. C.	
DESIGNED..... R. M.	SCALE: HOR. VERT. 1" = 400
DRAWN..... M. P.	
CHECKED..... R. G. J.	
DATE..... SEPT. 68.	DWG. No. 9200-29 (11)

1690



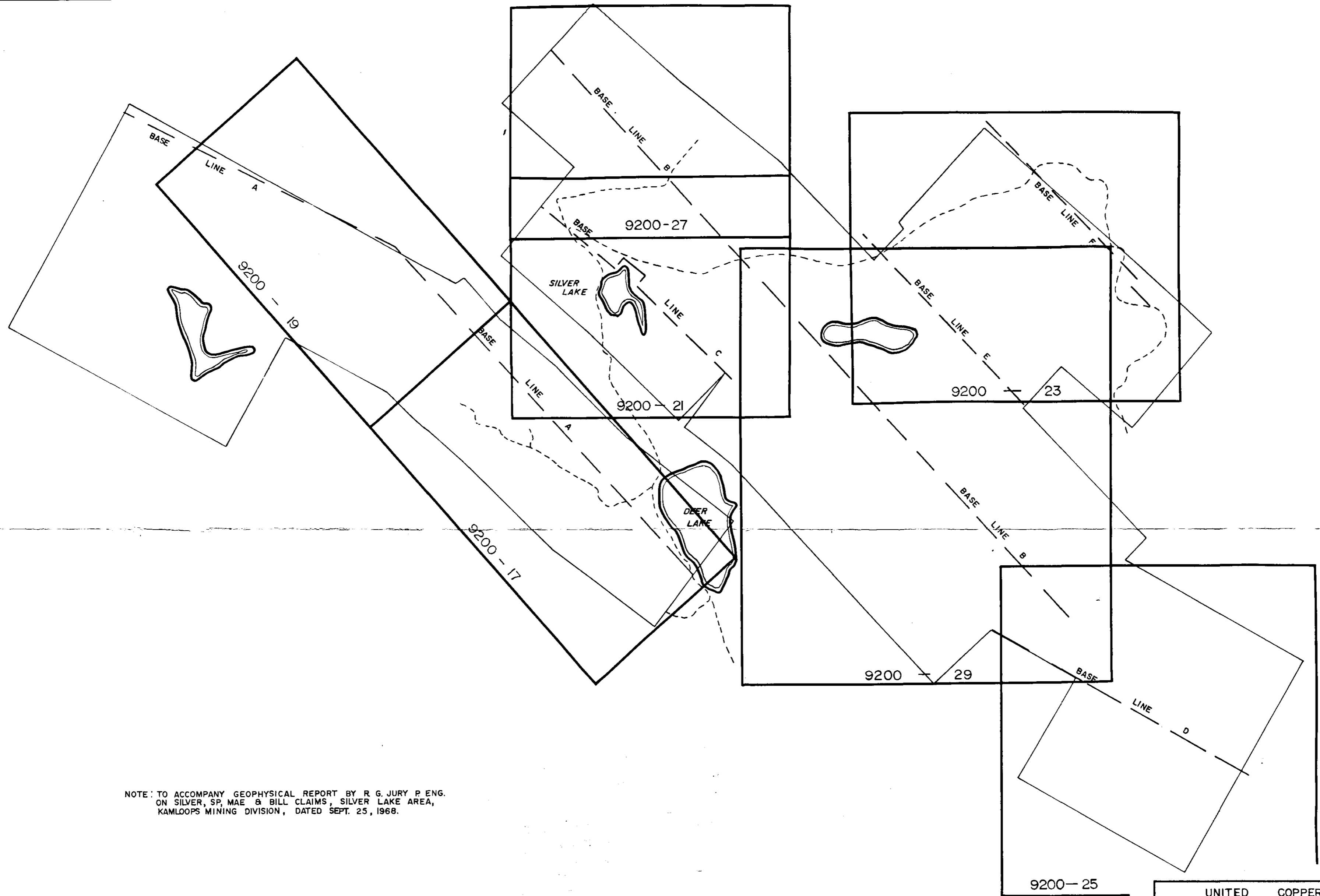
NOTE : CONTOUR SHOWN -200-0 GAMMAS } 100 INTERVALS  
 100-1000 " "  
 2000 " "

*Rae G. Jury*  
 NOTE : TO ACCOMPANY GEOPHYSICAL REPORT BY R. G. JURY P. ENG.  
 ON THE SILVER, SP, MAE & BILL CLAIMS, SILVER LAKE AREA,  
 KAMLOOPS MINING DIVISION, DATED SEPT 25, 1968.

Department of  
 Mines and Petroleum Resources  
 ASSESSMENT REPORT  
 NO. 1690 MAP

1690

UNITED COPPER CORPORATION LTD	
MAGNETIC CONTOUR OVERLAY SILVER LAKE PROPERTY SILVER 121 - 136 CLAIMS	
ALRAE ENGINEERING LTD. GEOLOGISTS AND ENGINEERS VANCOUVER, B. C.	
DESIGNED..... R. M.	SCALE: HOR. 1" = 400'
DRAWN..... M. P.	VERT.
CHECKED..... R. G. J.	DWG. No. 9200 - 25
DATE..... SEPT. 68	(12)

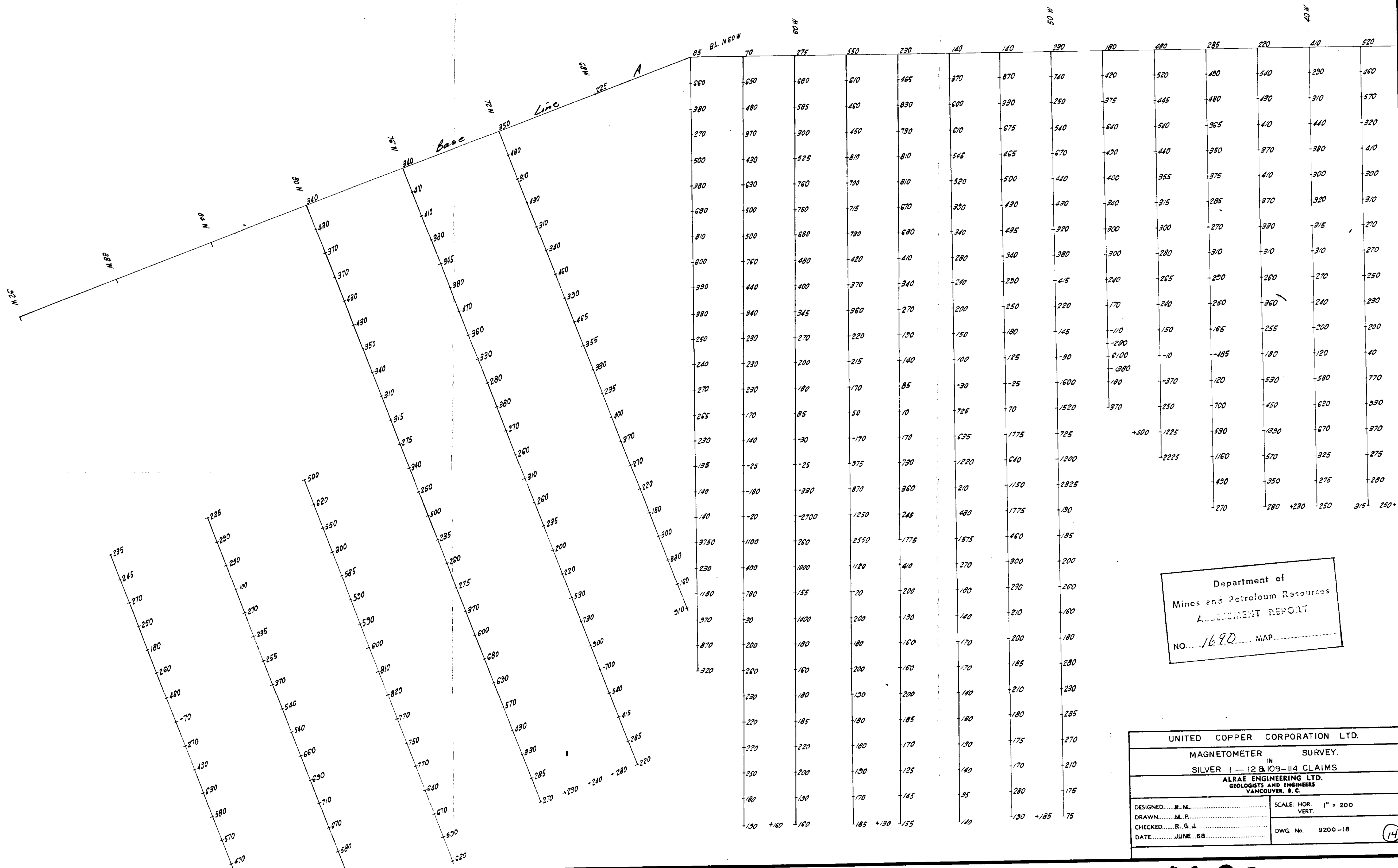
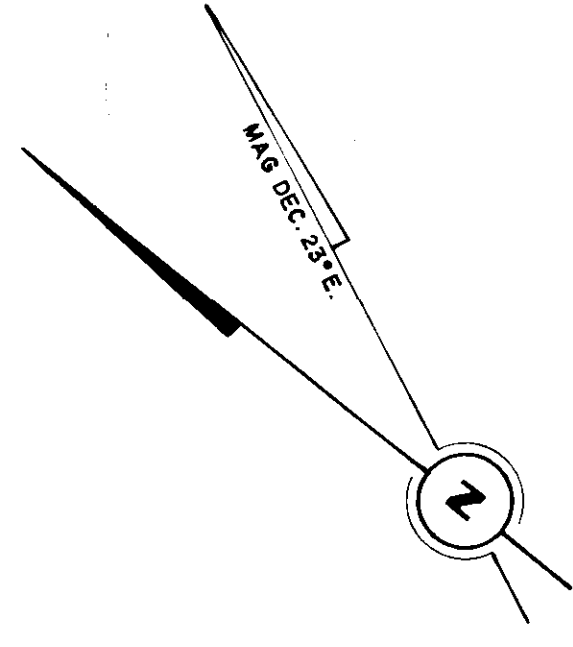


NOTE: TO ACCOMPANY GEOPHYSICAL REPORT BY R. G. JURY P. ENG.  
ON SILVER, SP, MAE & BILL CLAIMS, SILVER LAKE AREA,  
KAMLOOPS MINING DIVISION, DATED SEPT. 25, 1968.

1690

Department of  
Mines and Petroleum Resources  
ASSESSMENT REPORT  
NO. 1690 MAP

UNITED COPPER CORPORATION LTD.	
MAGNETOMETER SURVEY INDEX SILVER LAKE PROPERTY	
ALRAE ENGINEERING LTD. GEOLOGISTS AND ENGINEERS VANCOUVER, B. C.	
DESIGNED.....	SCALE: HOR. 1" 1600'
DRAWN..... M. P.	VERT.
CHECKED..... R. G. J.	DWG. No. 9200-30
DATE..... SEPT. 68.	(13)



NOTE: TO ACCOMPANY GEOPHYSICAL REPORT BY R. G. JURY P. ENG. ON THE SILVER, SP, MAE & BILL CLAIMS, SILVER LAKE AREA, KAMLOOPS MINING DIVISION, DATED SEPT. 25 1968.

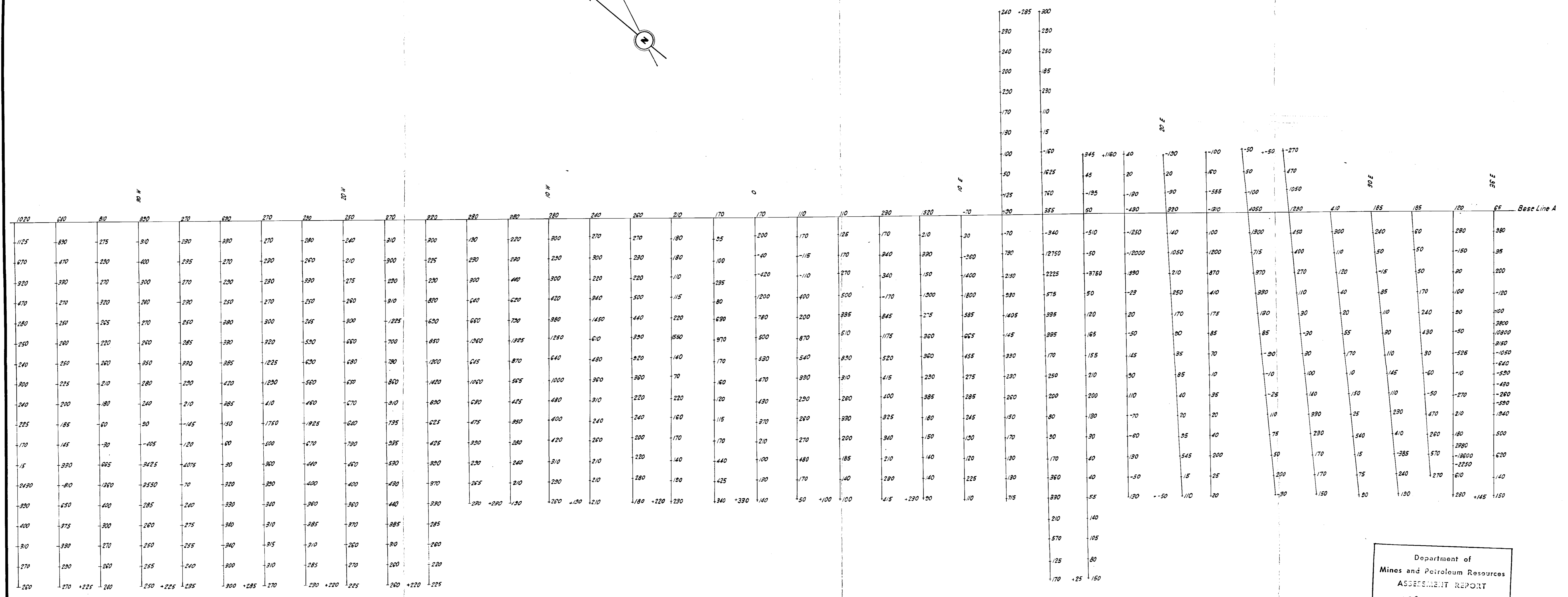
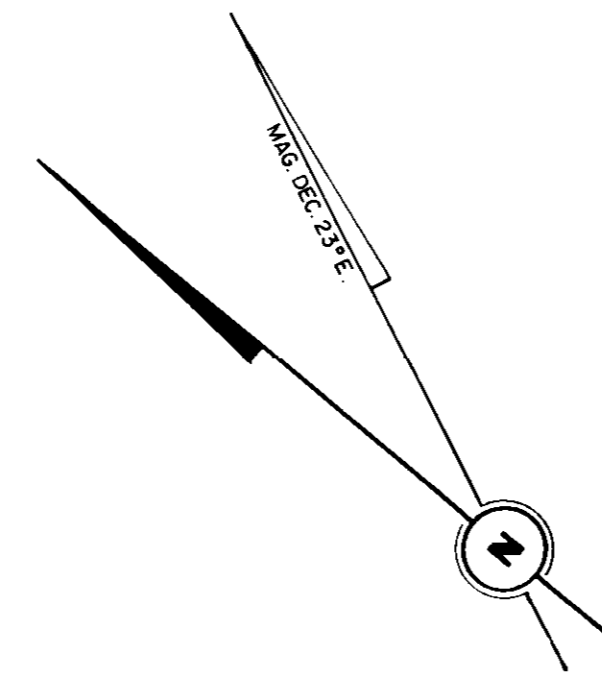
*Rae G. Jury*

Department of  
Mines and Petroleum Resources  
ASSESSMENT REPORT  
NO. 1690 MAP

UNITED COPPER CORPORATION LTD.  
MAGNETOMETER SURVEY  
IN  
SILVER 1 - 12 B 109-114 CLAIMS  
ALRAE ENGINEERING LTD.  
GEOLOGISTS AND ENGINEERS  
VANCOUVER, B. C.  
DESIGNED: R. M. SCALE: HOR. 1" = 200  
DRAWN: M. P. VERT.  
CHECKED: R. G. J. DWG. No. 9200-18  
DATE: JUNE 68. (14)

1690





NOTE: TO ACCOMPANY GEOPHYSICAL REPORT BY R. G. JURY PENG.  
ON THE SILVER, SP, MAE & BILL CLAIM, SILVER LAKE AREA,  
KAMLOOPS MINING DIVISION, DATED SEPT. 25 1968.

*R. G. Jury*

Department of  
Mines and Petroleum Resources  
ASSESSMENT REPORT  
NO. 1690 M.P.

UNITED COPPER CORPORATION LTD.	
MAGNETOMETER SURVEY	
SILVER 1-12 & 109-114 CLAIMS	
ALRAE ENGINEERING LTD. GEOLOGISTS AND ENGINEERS VANCOUVER, B. C.	
DESIGNED: R.M.	SCALE: HOR. 1" = 200'
DRAWN: M.P.	VERT. 1" = 200'
CHECKED: R.G.J.	DWG. No. 9200-16
DATE: JUNE 68.	(15)

1690