

1698

PART 3

SUPPLEMENT TO THE
GEOPHYSICAL REPORT
on the
AIRBORNE MAGNETOMETER SURVEY
of the
BEA, GIANT, P. and MILL CLAIM GROUPS
Situated in the Hope Area
NEW WESTMINSTER M.D.
LAT. 49°27'N: LONG. 121°28'W

Airborne Field Work
August 27th, 1967

on behalf of

KELSO EXPLORATIONS LTD.

by

D. R. Cochrane, P.Eng.

September 5th, 1967
Vancouver B.C.



GEO-X SURVEYS

VANCOUVER, CANADA

Ltd.

TABLE OF CONTENTS

	Page:
INTRODUCTION	1
FIELD PROCEEDURE	1
RESULTS and DISCUSSION	2
SUMMARY and CONCLUSIONS	3
<i>12</i> Figure S-1 - Flight lines	
<i>13</i> Figure S-2 - Chart Records	
<i>14</i> Figure S-3 - Magnetic Trends - Anomalies	
Figure S-4 - Airphoto mosaic	
Appendix S-1 - Flight operator's report	

INTRODUCTION:

On July 29th, 31st and August 1st, 1967, a total of 92.58 line miles of coincident airborne magnetometer and aerial photography was flown on four claim groups situated in the Hope area, B.C., and owned by Kelso Explorations Ltd. On August 26th, 1967 an additional 15.06 line miles was completed within an area previously not flown.

This report describes and discusses the results of the supplemental survey. The location of the property, claim data, geomorphology, general geology and the instruments and specifications are described in the August 18th report.

FIELD PROCEEDURE:

A total of nine additional lines were flown, as shown in Figure A-1. The flight direction varied from north-east to almost due north. The shortest line was Line #5 (1.37 miles) and the longest was Line #9 (2.75 line miles). An elevation of 500 - 700 feet above the ground was maintained at an average air speed of 60 mph. The instruments were installed in a Heliocourier. The chart record scale was set at ± 1500 gammas. A maximum response of +470 gammas was encountered on Line #4, and a minimum of -970 gammas was recorded on Line #1.

RESULTS and DISCUSSION:

The chart profile records are presented in Figure S-2, and the plan of magnetic trends and anomalies in Figure S-3.

A magnetic high, quite strong at the point of beginning (P.O.B.) on Line #4, apparently decreases in amplitude to the north towards the P.O.B. on Line #2. This magnetic high is an extension of previous anomaly 1-A. To the east of the high, the records show a broad magnetic low, centered in the lake, and extending and narrowing to the north.

A weak to moderate magnetic high was encountered on Lines 1, 2, 5 and 6. This high is apparently the southward extension of a previously located south-east magnetic high.

A narrow, isolated magnetic high was encountered near the point of end of Line #8, immediately west of the Fraser River.

SUMMARY and CONCLUSIONS:

On July 29th, 31st and again on August 1st, 1967, a total of 92.58 line miles of coincident airborne magnetometer and aerial photography was completed on the Bea, Giant, Mill and P. claim groups. The results of the survey are described in a private report, by the author, dated August 18th, 1967. On August 26th, an additional 15.06 line miles was flown on parts of the Bea and Giant claims that were previously missed. This supplemental report describes the field procedure and results of the latter survey.

Three magnetic highs were encountered in the work, and are described in the report. Two of the magnetic highs are extensions of previously discovered trends, and a third is an isolated peak near the east end of Line #8. A broad magnetic low is situated in and around Schkam Lake.

The supplemental programme has essentially confirmed and/or extended previous anomalies.

In view of the proximity of the Kelso Explorations' claim groups to the nickel mine operated by Giant Mascot, a "follow-up" ground programme to investigate magnetic anomalies 1-A, 1-B, 1-C, 2-A and 2-B is recommended.

September 5th, 1967
Vancouver, B.C.

Respectfully submitted,

D. R. COCHRANE
D. R. Cochrane, Eng.


APPENDIX I

FLIGHT DATA and OPERATOR'S REPORT

Property: Kelso Exploration Job: 1009 Date: Aug. 27th, 1967Operator: J. Pitre Flight Elevation: 500' - 700'Direction flown: N.E. Air Speed: 60mph Chart Scale: 1/1500Weather: Light cloud, warm 7:00 AM to 8:15 AM

LINE Number	P.O.B.(feet)		P.O.E.(feet)		Length Miles	Max. Z gammas	Min. Z gammas
	X	Y	X	Y			
1					1.52	+430	-970
2					1.41	+450	-160
3					1.44	+300	-340
4					1.56	+470	-300
5					1.37	+400	-330
6					1.45	+440	-660
7					1.82	+230	-800
8					1.74	+360	-480
9					2.75	+250	-650

Total number of X, Y, Z points _____

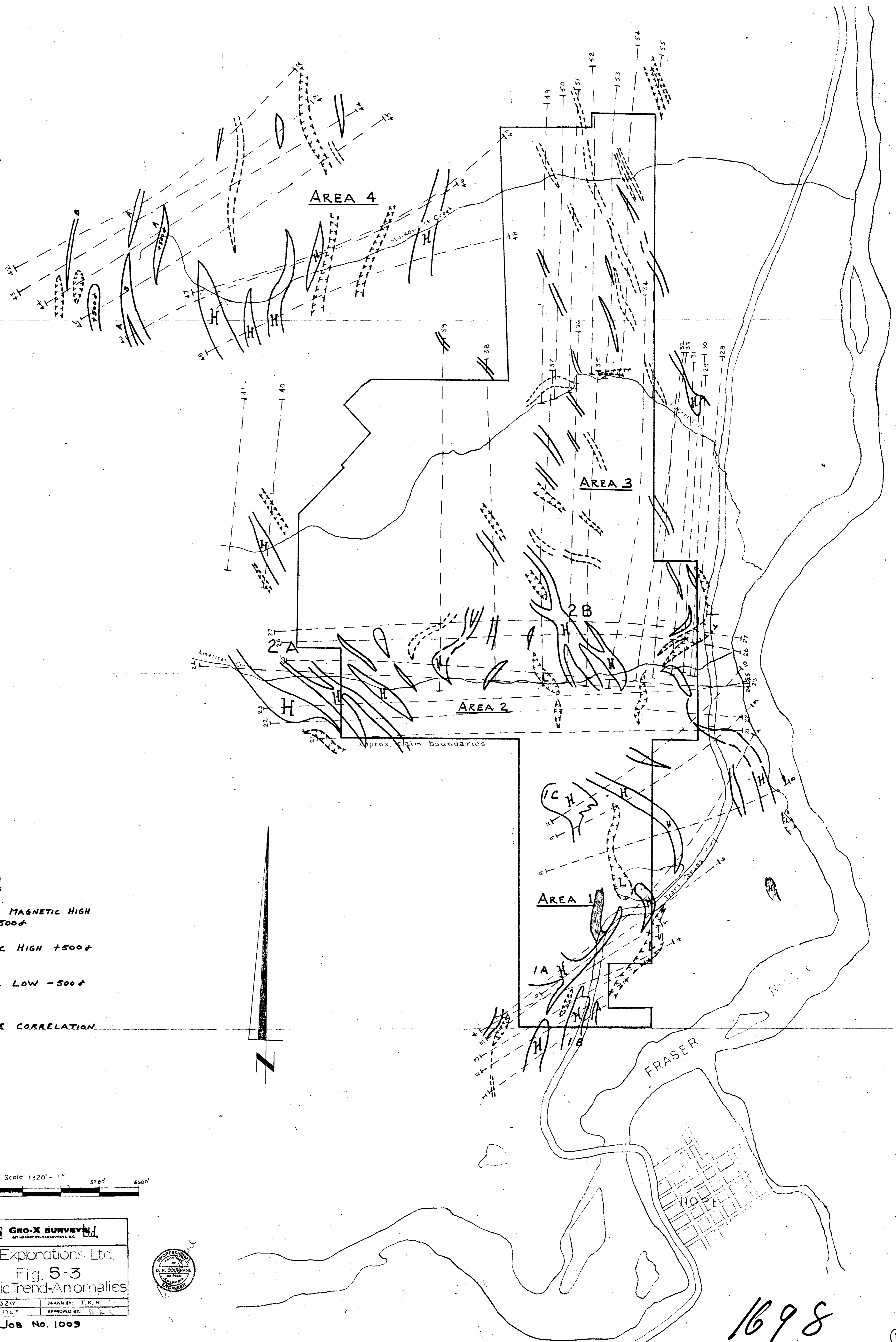
Total number of line miles 15.06Signed: Ray Pitre

KELSO EXPLORATIONS



FIG 5-4

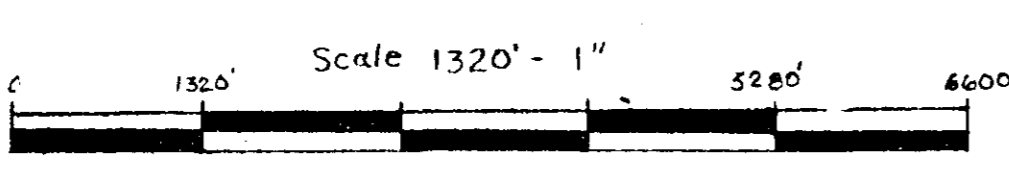
TO ACCOMPANY THE SUPPLEMENT TO THE
GEOPHYSICAL REPORT ON THE AIRBORNE
MAGNETOMETER SURVEY ON THE BEA, GIANT,
P. & MILL CLAIM GROUPS SITUATED IN
THE HOPE AREA, NEW WESTMINSTER M.D.
ON BEHALF OF KELSO EXPLORATIONS LTD.
BY D. R. COCHRANE, P. Eng.
DATED SEPTEMBER 5, 1967
VANCOUVER B.C.



LEGEND

- NARROW MAGNETIC HIGH +500+
- MAGNETIC HIGH +500+
- MAGNETIC LOW -500+
- TENTATIVE CORRELATION

Department of
Mines and Petroleum Resources
ASSESSMENT REPORT
NO. 1698C MAP 1

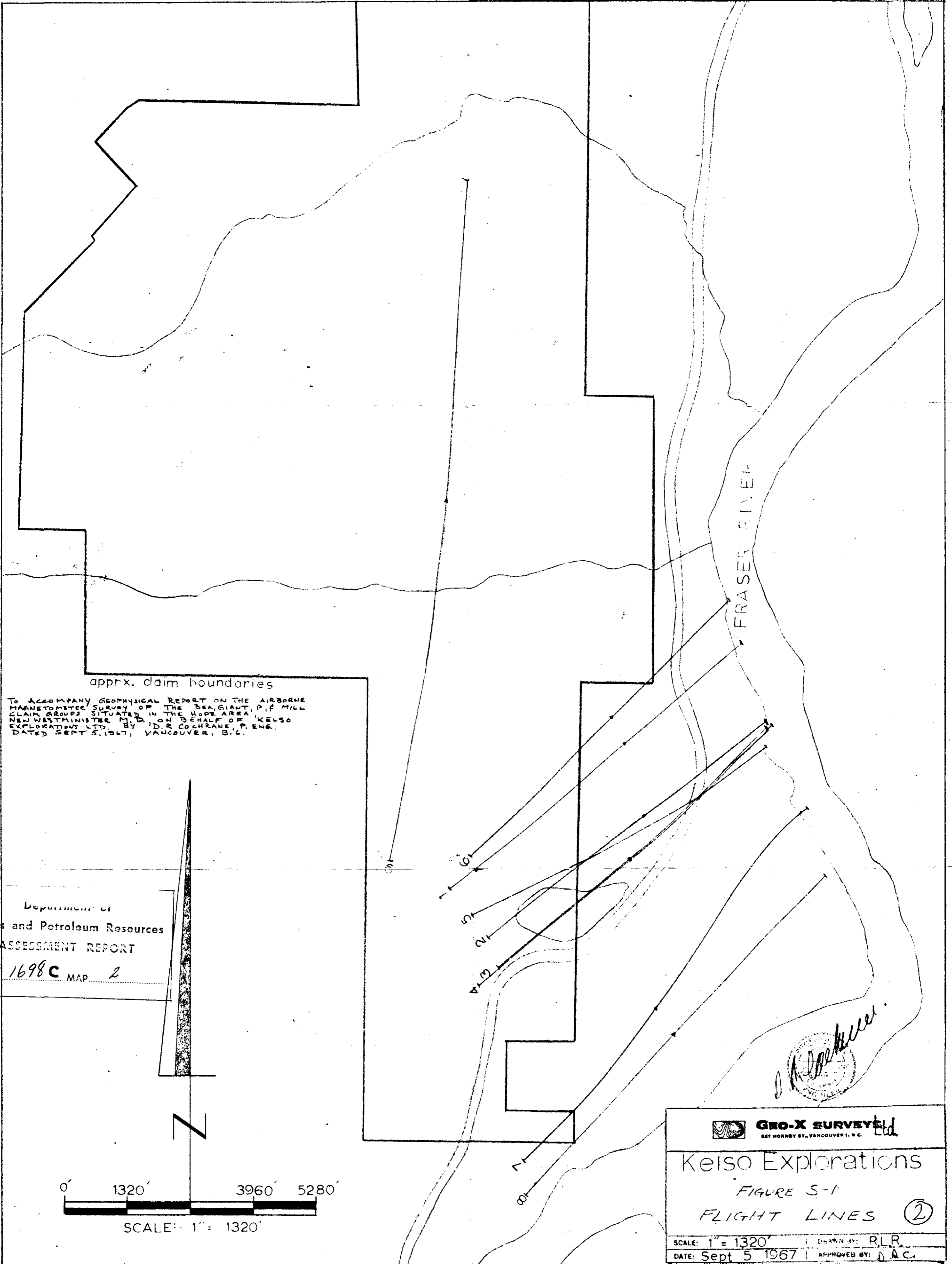


In accompany Supplemental Report
on the airborne magnetometric survey
of the
Ban, Hart, P., and Hill
claim groups situated in the Hope
area, New Westminster, B.C., on
behalf of Kelso Explorations Ltd.
by
D. R. Cochrane, P. Eng.
Request 18, 1967, Supplement 2007.5, 1967
Vancouver, B.C.

GEO-X SURVEYS LTD.
BY ROBERT W. YARROUVELL, S.E.
Kelso Explorations Ltd.
Fig. 5-3
Magnetic Trend-Anomalies
SCALE: 1" = 1320'
DATE: Aug. 1967
DRAWN BY: T.K.H.
APPROVED BY: D.R.C.
Job No. 1009



1698



apprx. claim boundaries

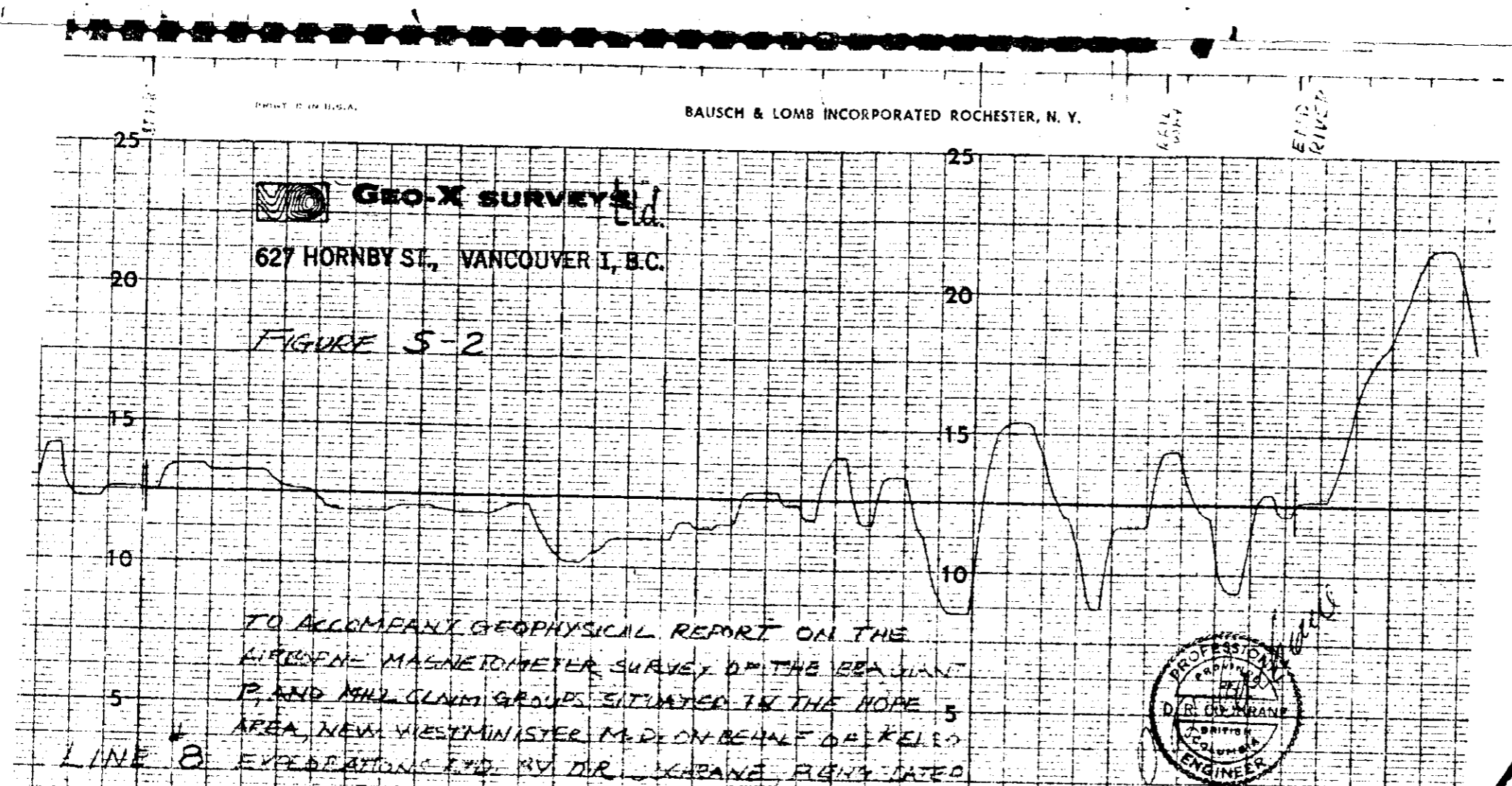
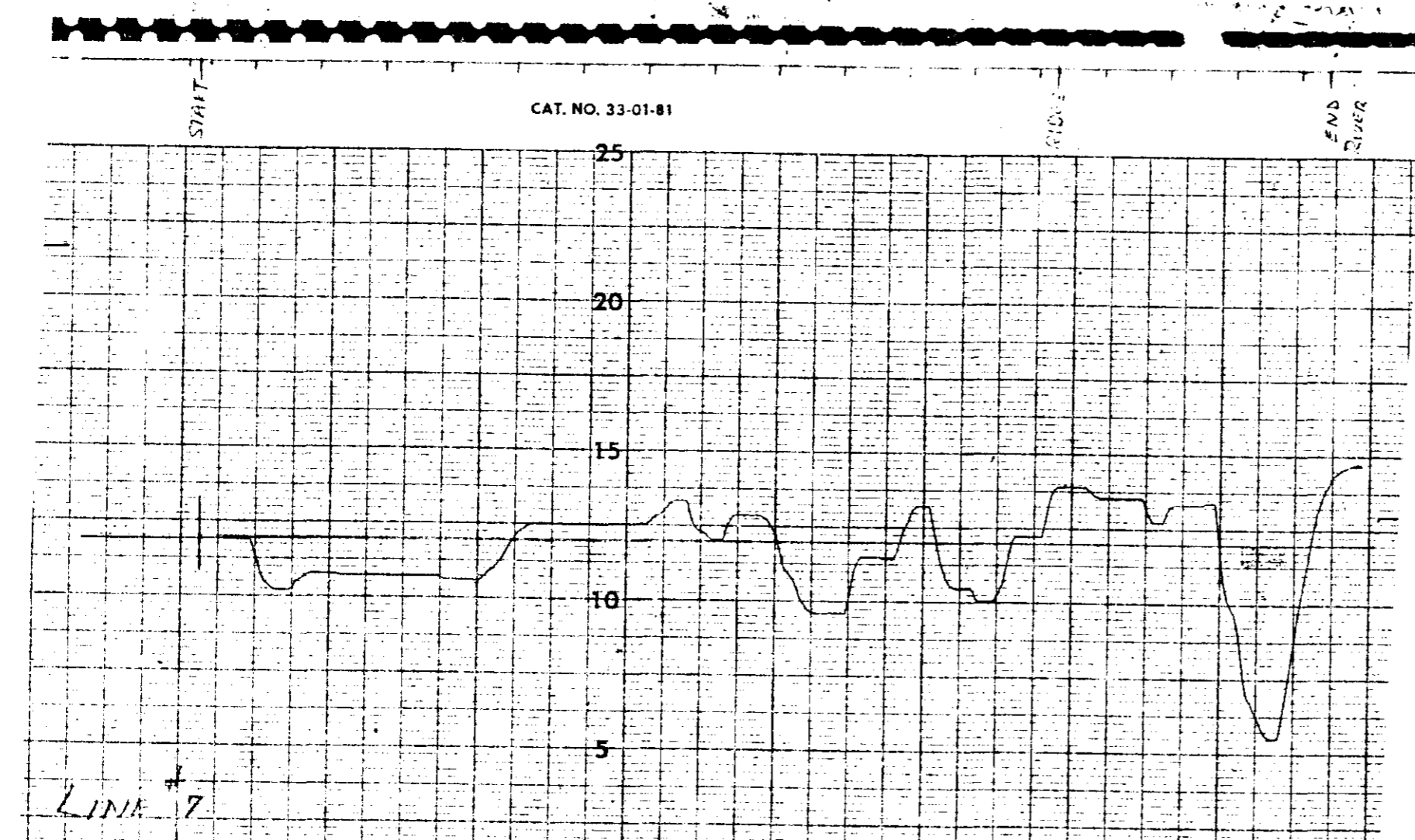
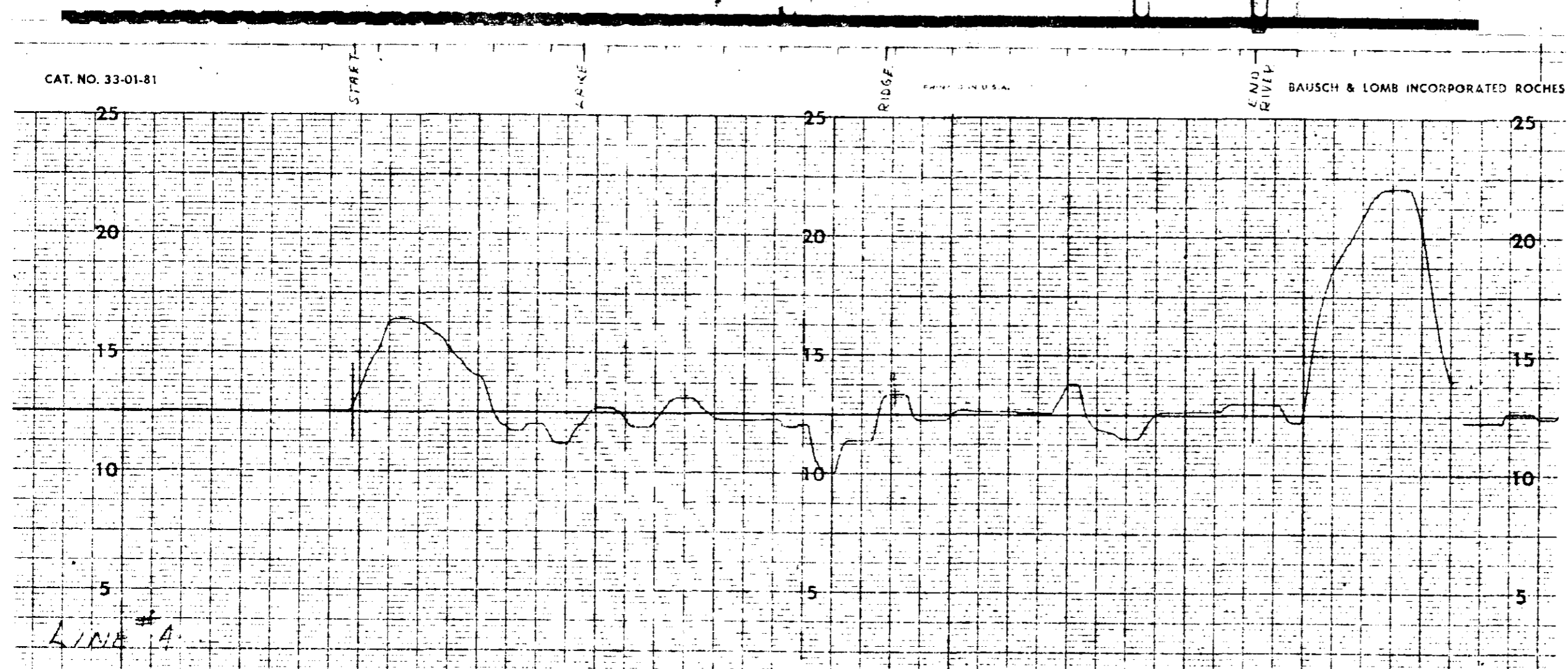
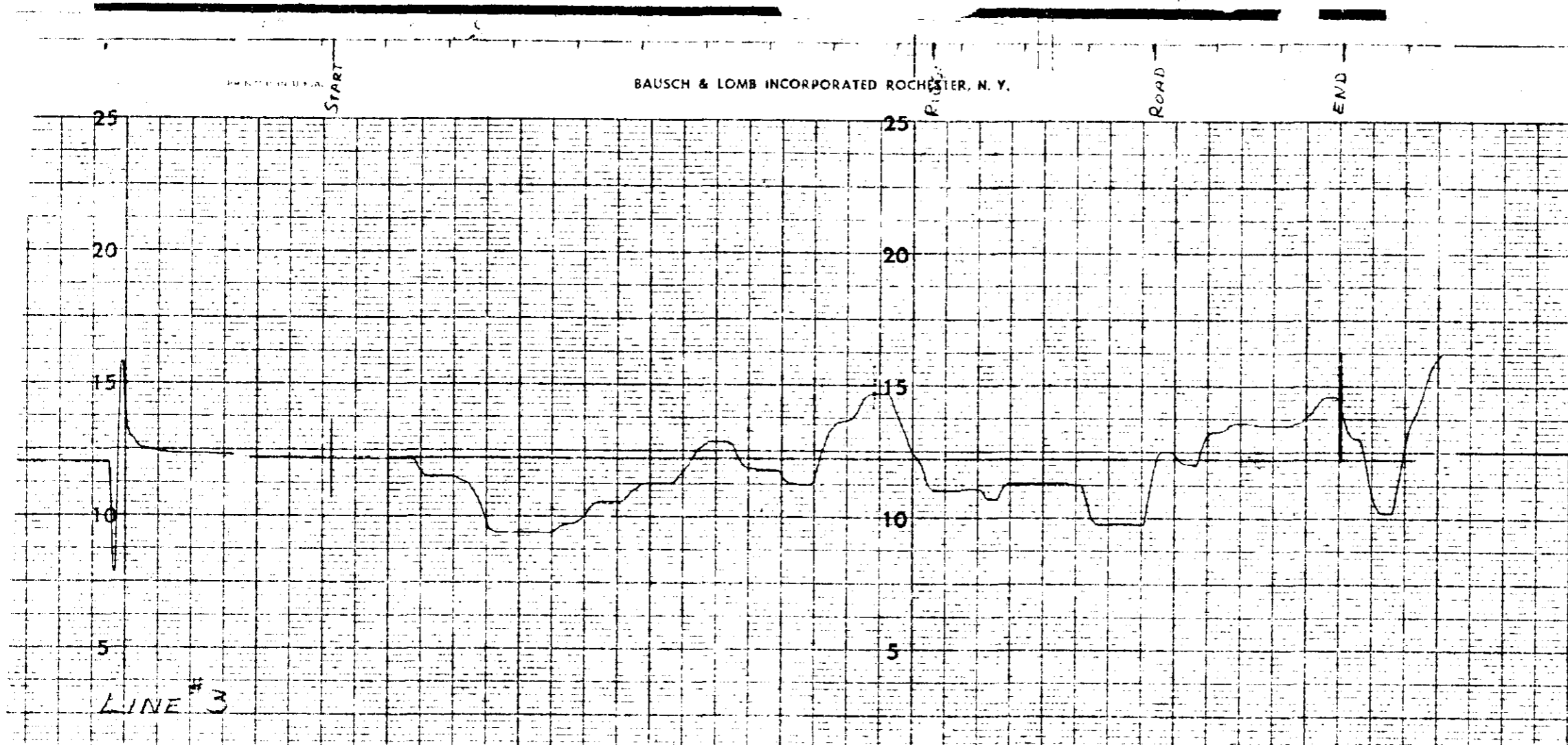
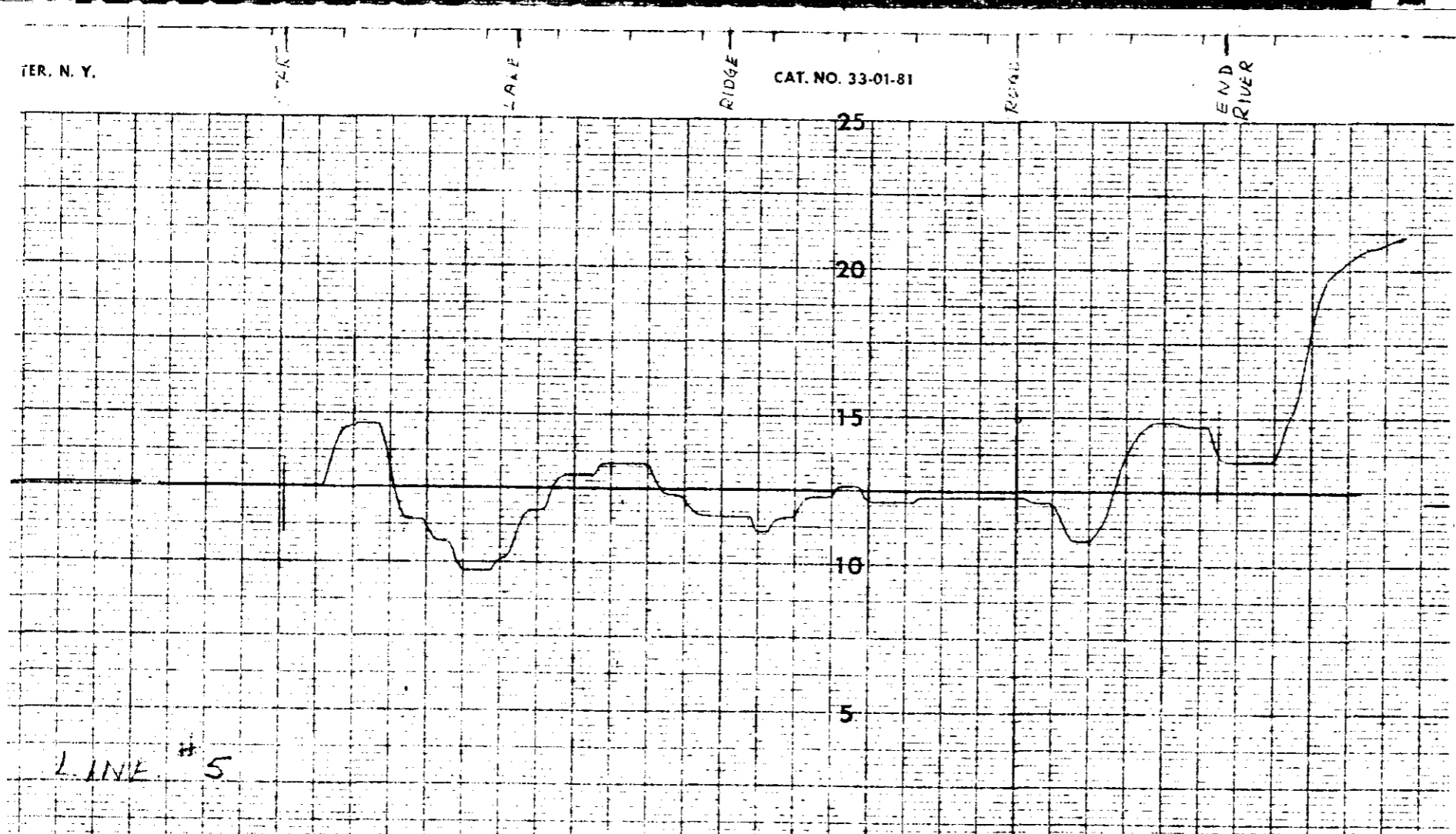
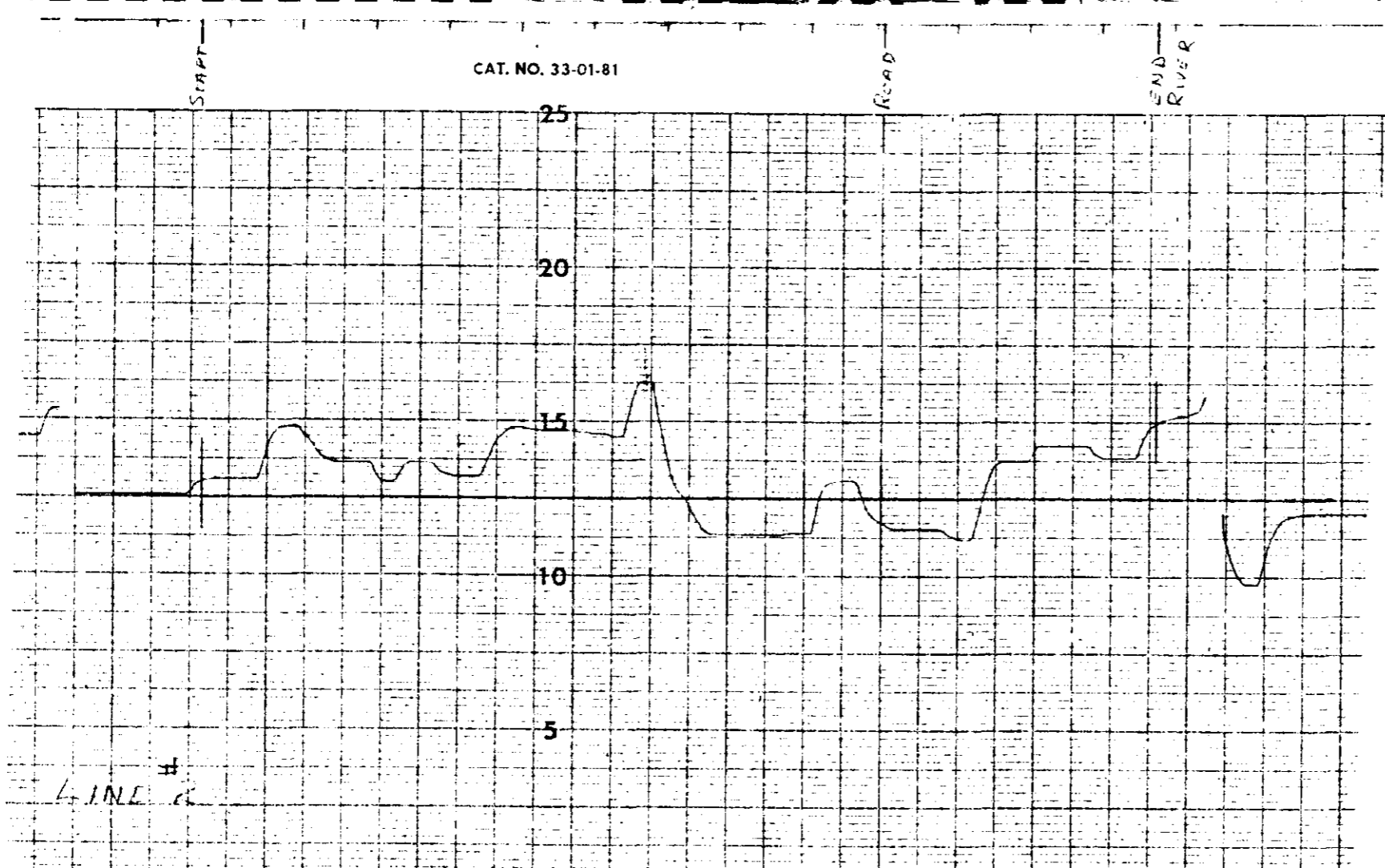
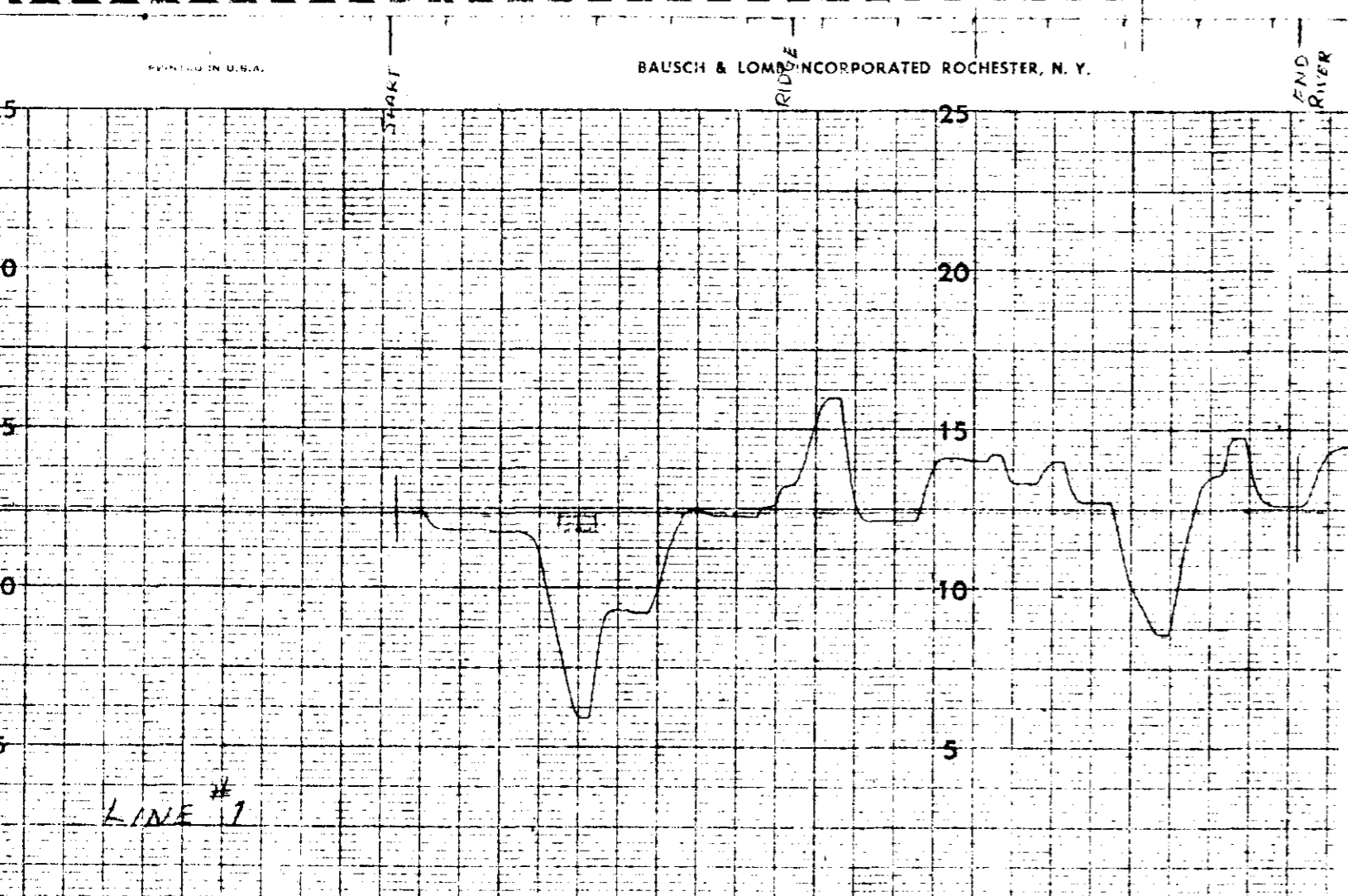
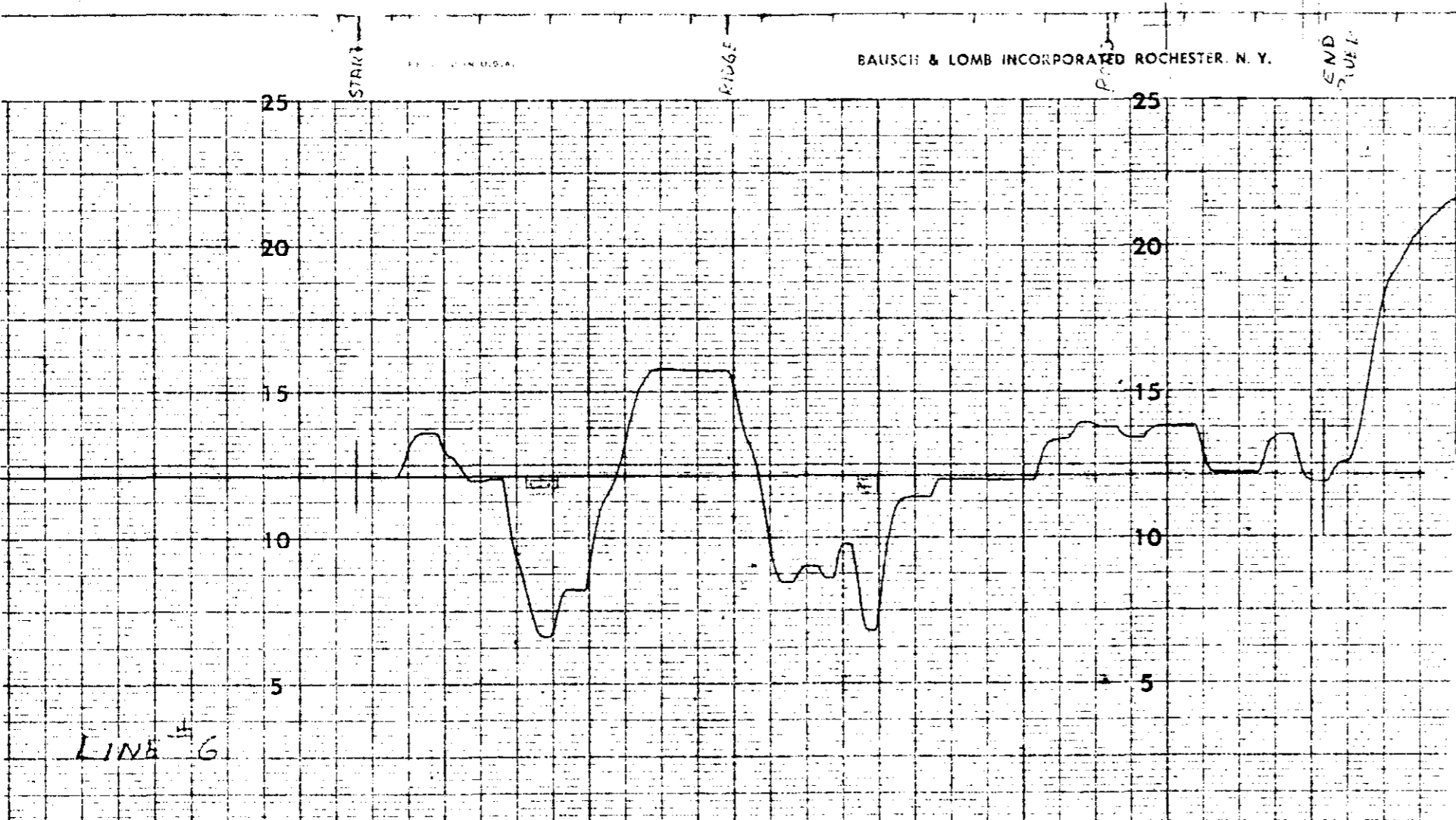
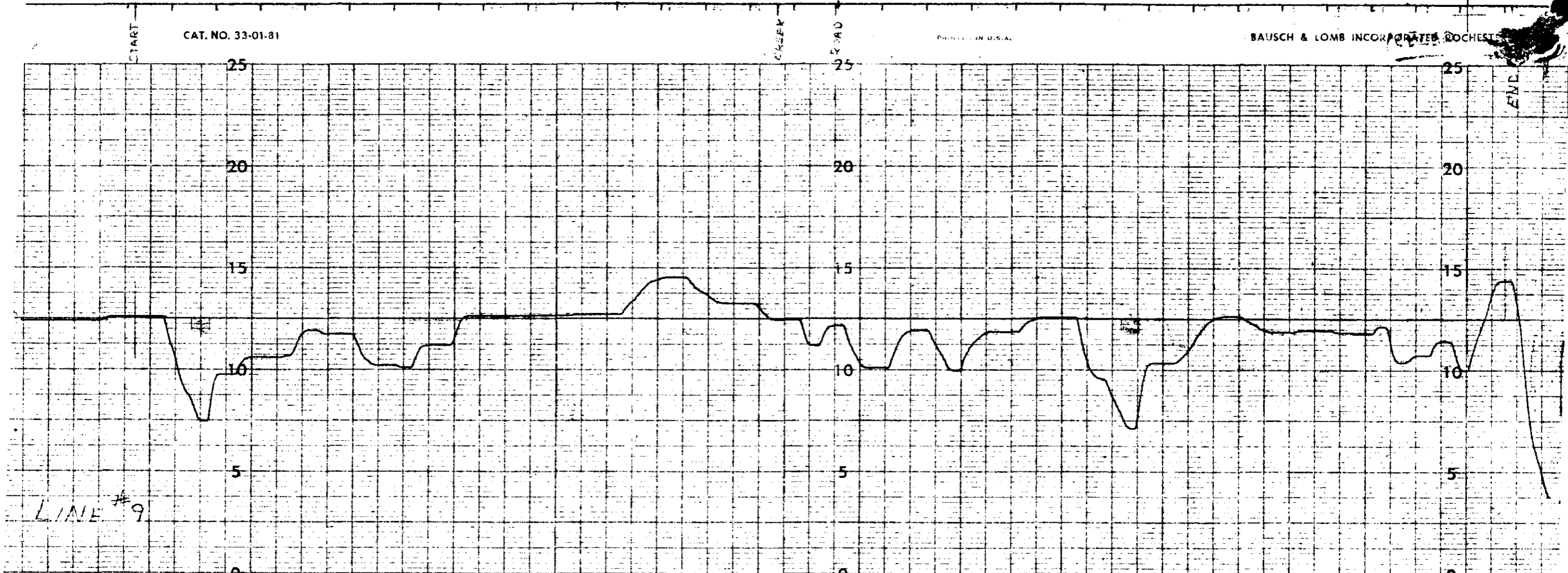
TO ACCOMPANY GEOPHYSICAL REPORT ON THE AIRBORNE
 MAGNETOMETER SURVEY OF THE DEE, GIANT, P.F. MILL
 CLAIM GROUPS SITUATED IN THE HOPE AREA,
 NEW WESTMINSTER M.D. ON BEHALF OF
 KEISO EXPLORATIONS LTD. BY J.D.R. COCHRANE, P. ENG.,
 DATED SEPT 5, 1967, VANCOUVER, B.C.

Department of
 Mines and Petroleum Resources
 ASSESSMENT REPORT
 NO. 1698C MAP 2

0' 1320' 3960' 5280'
 SCALE: 1" = 1320'

GEO-X SURVEYS Ltd.
 827 HORNBY ST., VANCOUVER 1, B.C.
 Kelso Explorations
 FIGURE S-1
 FLIGHT LINES (2)
 SCALE: 1" = 1320' DRAWN BY: R.L.R.
 DATE: Sept 5 1967 APPROVED BY: D.A.C.

1698



GEO-X SURVEYS LTD.
627 HORNBY ST., VANCOUVER 1, B.C.

FIGURE S-2

TO ACCOMPANY GEOPHYSICAL REPORT ON THE
MAGNETIC SURVEY OF THE BEAULAC
AND MILL CREEK GROUPS SITUATED IN THE HOPE
AREA, NEW BRUNSWICK, MADE ON BEHALF OF THE
LINE OF OPERATIONS LTD. BY DR. KARNE, JUNIOR, DATED
SEP. 5, 1967, VANCOUVER, B.C.



Department of
Mines and Petroleum Resources
ASSESSMENT REPORT
NO. 1698 C MAP 3

1698 (3)