

1725

A REPORT ON  
GEO-CHEMICAL SURVEYS  
OF THE  
DEL AND LOU CLAIMS  
BABINE LAKE AREA  
OMINECA MINING DIVISION  
54° 41' - 126° 15' N.W.

By

S. J. Hunter, P. Eng.

For

RIP VAN MINING LTD. (NPL)

Vancouver, B. C.

December 18, 1968

RECEIVED
JAN - 6 1969
AT.....M
.....

TABLE OF CONTENTS

	<u>Page No.</u>
INTRODUCTION	1
LOCATION AND ACCESSIBILITY	2
STATUS OF THE PROPERTY	2
GENERAL GEOLOGY	3
SURVEY PROCEDURES	3 - 4
1. Location of Sample Points	
2. Method of Sampling and Assaying	
SURVEY RESULTS	5
CONCLUSIONS AND RECOMMENDATIONS	6
MAPS	
Location Sketch	
<del>A</del> Surface Plan	

A REPORT ON  
GEO-CHEMICAL SURVEYS  
OF THE  
DEL AND LOU CLAIMS  
BABINE LAKE AREA  
OMINECA MINING DIVISION  
54° 41' - 126° 15' N.W.

INTRODUCTION

This report is on a geo-chemical survey and prospecting conducted by the author on the " Del " and " Lou " Claims during the month of October 1968 for Rip Van Mining Ltd. (NPL).

An induced polarization survey by Seigel Associates Limited and a magnetometer survey was first conducted over the claims to define targets. Subsequently soil sampling for copper - zinc - silver content across the anomalies and claim areas was initiated to test the targets for presence of metal anomalies in order to determine whether or not adequate reason existed for further exploration for copper zones.

### LOCATION AND ACCESSIBILITY

The " Del " Claims and " Lou " Claims are in the Omineca Mining Division, five and a half miles southwest of the Granisle Mine of the Granby Mining Company on Babine Lake.

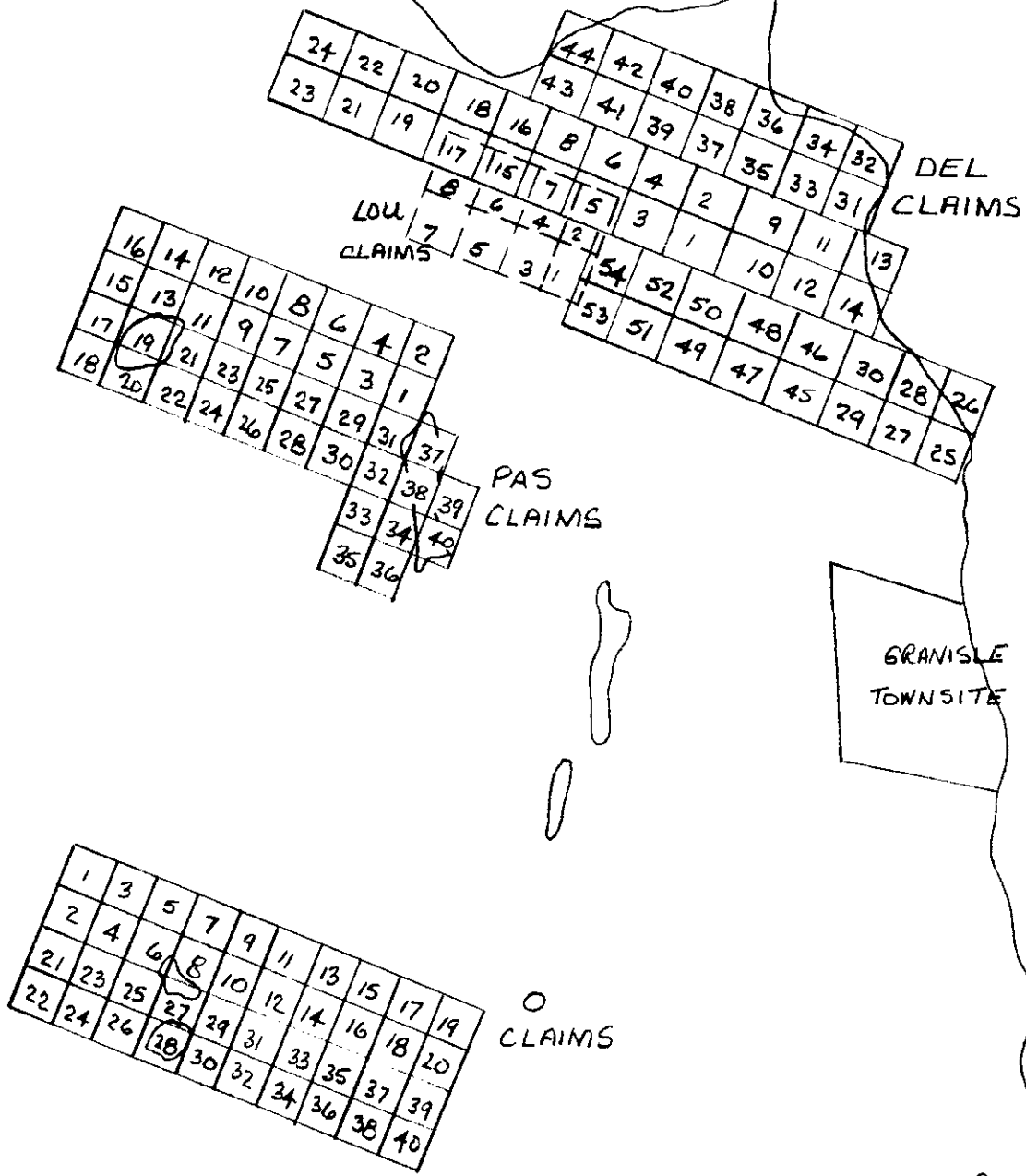
The claims can be accessed directly to the Granisle Mine townsite over an all-weather dirt road. Thence a day's back-pack is necessary to reach the claims, or more simply by use of helicopter from either the Granisle townsite or Topley Landing.

A location sketch follows this page.

### STATUS OF THE PROPERTY

There are 54 claims in the " Del " group and 8 claims in the " Lou " group held by right of location and duly recorded at the District Recording Office in Smithers

by: Rip Van Mining Ltd. (NPL)  
020, 640 - 7th Avenue SW  
Calgary, Alberta



NEWMAN  
PROPERTY  
(NORANDA)

⊗ GRANISLE  
MINE  
(GRANBY)

GRANISLE  
TOWNSITE

BABINE LAKE

LOCATION PLAN - DEL & LOU CLAIMS  
RIP VAN MINING LTD. (NPL)  
BABINE AREA - OMINECA DISTRICT  
SCALE 1" = 1 MILE.

## GENERAL GEOLOGY

The west side of Babine Lake generally embraces volcanic rocks and sediments of Mesozoic Age. They represent the Jurassic period closely akin to the Hazelton Group, however, they are not specifically classified with this group.

The rocks in stratigraphic sequence from west to east in the general claim area represent volcanic breccias and tuffs passing into sedimentary quartzites and limestones to the east and thence into intrusive rocks which may be pre Mesozoic - the relationship is unknown. The limestones form a very prominent ridge rising in places several hundreds of feet above the plateau. The volcanics and sediments strike northerly and are inclined at low angles to the east.

A series of east - west faults and north - south shear zones cross the district.

## SURVEY PROCEDURES

### 1. Location of Sample Points

The claims location line was run by compass and

chain at which time 100 foot stations were established. The cross lines were run by compass and chain and 100 foot stations were marked on these lines.

The lines were cleared and brushed out for the geophysical surveys.

Soil samples were taken at 100 foot intervals and marker flags were set designating the sample number which was also noted on the sample container. A total of 347 samples were taken.

## 2. Method of Sampling and Assaying

The surface humus and organic material was removed by shovel from each sample point until the lower clay was exposed. Approximately 3 ounces of material was taken by use of a hand auger from a 12 inch penetration of the clay or " C " horizon, placed in paper bags and tagged for site location.

The samples were forwarded to the Technical Services Laboratories in Vancouver for analysis. All samples were dried and screened and treated by hot  $\text{HNO}_3$  acid extraction followed by determination for copper - zinc - silver by atomic adsorption.

Values were plotted on the accompanying plan.

SURVEY RESULTS

The values obtained on the " Del " claims for copper - zinc - silver are not generally encouraging. The background count is as follows:

<u>Copper</u>	<u>Zinc</u>	<u>Silver</u> (ppm)
25	42	1.0

Scattered erratic highs in copper were determined on Del claims 17, 18, 19, 20 as follows:

<u>Copper</u>	<u>Zinc</u>	<u>Silver</u> (ppm)
123	45	2.0
101	41	0.5
128	53	2.5
103	72	2.0

It is not considered that these values substantiate the I.P. chargeability of 4 millisecons.

On the boundary line between Del claims 7 and 15, the section appeared to be anomalous as results indicate:

<u>Copper</u>	<u>Zinc</u>	<u>Silver</u> (ppm)
71	28	1.0
105	45	1.0
1080	68	7.5
196	42	3.5



The I.P. survey did not indicate any degree of chargeability in this section. However, the magnetometer indicated an 1800 gamma reading over this area.

#### CONCLUSIONS AND RECOMMENDATIONS

The results of the soil sampling have yielded generally insignificant values in ppm. for copper - zinc - silver.

The one section between Del Claims 7 and 15 is deemed to be anomalous both from the soil sample results and the magnetometer survey. It is recommended to test this area by further soil sampling and possibly by some hand stripping or bulldozer trenching.



Vancouver, B. C.  
December 18, 1968

S. J. Hunter, P. Eng.  
Consulting Mining Engineer

STATEMENT OF EXPENSES

" Del " and " Lou " Claims - 1968 Geochemical Survey

Geochemical surveying was conducted by S. J. Hunter,  
P. Eng. Expenses are listed below.

Wages:

<u>Personnel</u>	<u>Rate</u>	<u>Period</u>	<u>Amount</u>
C. Drysdale	\$750/mo.	3 weeks	\$ 600.00
S. Hunter	\$1500/mo.	4 weeks	\$1500.00
Vehicle			600.00
Boat Rental			150.00
Assays - Technical Services Lab			350.00
Supplies			<u>300.00</u>
Total			\$3500.00

Declared before me at the *City*  
of *Vancouver*, in the  
Province of British Columbia, this *19th*  
day of *December, 1968*, A.D.

*S. J. Hunter*


*J. Paul*  
SUB-MINING RECORDER  
A Commissioner of the Court of Civil Judgments in British Columbia or  
A Commissioner of the Court of Civil Judgments in the Province of British Columbia.

CERTIFICATION

I, Stanley John Hunter of Vancouver, British Columbia do hereby certify that:

1. I am a Consulting Mining Engineer with residence at 6476 Churchill Street, Vancouver, B. C.
2. I am a Registered Professional Engineer in the Provinces of British Columbia and Ontario.
3. I am a graduate of the University of British Columbia and have practised my profession for 20 years.
4. The information contained in this report was obtained from the author's work on the properties during the month of October 1968.

Vancouver, B. C.  
December 18, 1968

  
S. J. Hunter, P. Eng.  
Consulting Mining Engineer

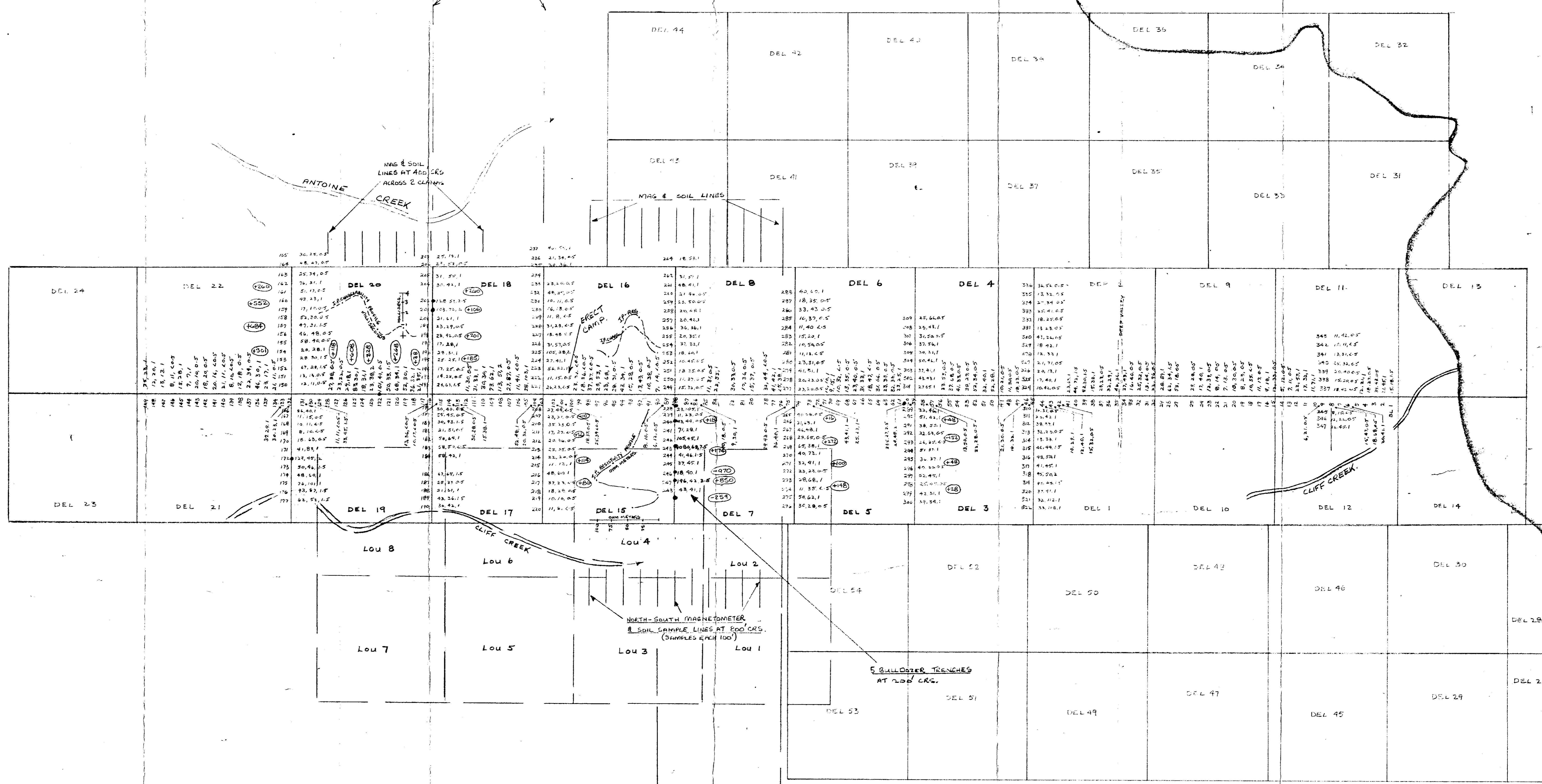
BABINE LAKE

ELEV. 2332 FT. A.S.L.

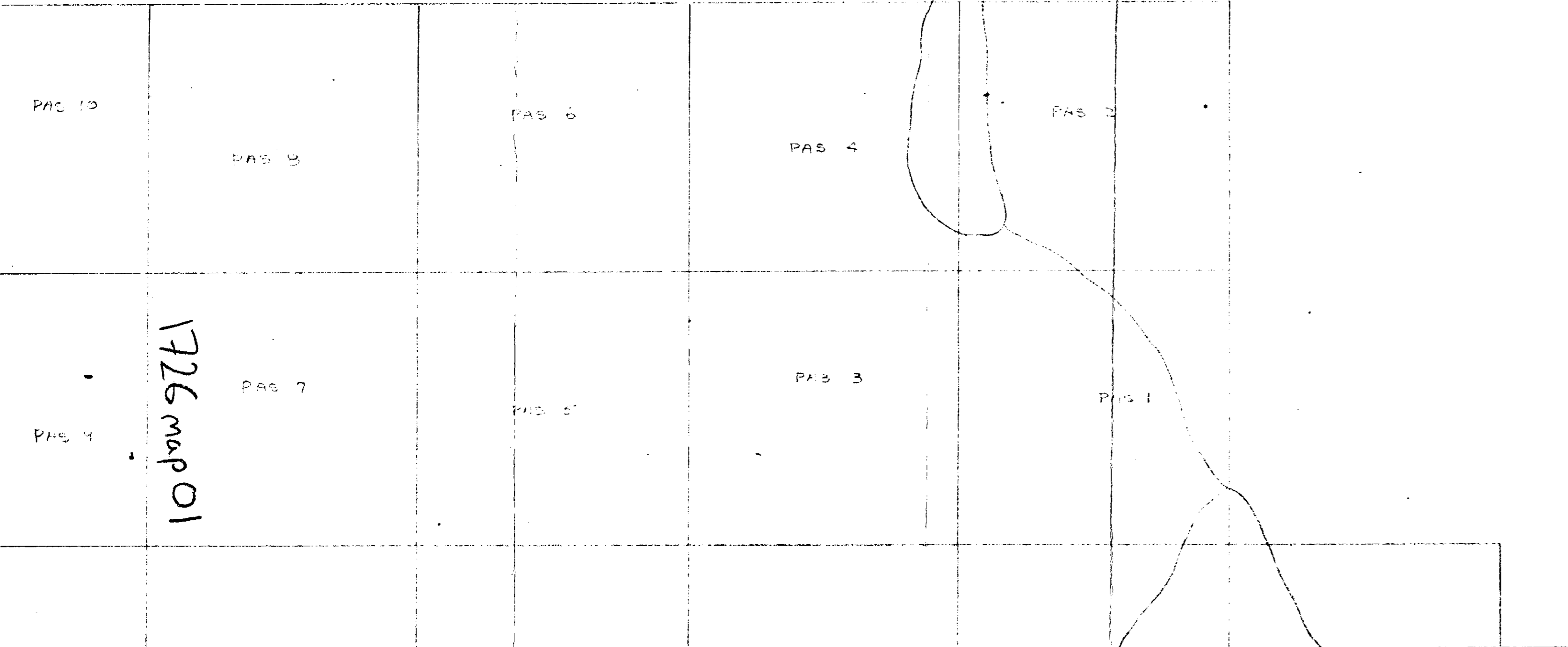
EXTEND 2 RECONNAISSANCE LINES NORTH FOR MAG. & SOILS AT 400' CRS. FOR 10,000'

MAG. & SOIL LINES AT 400' CRS. ACROSS 2 CLAIMS

MAG. & SOIL LINES



EXTEND 2 LINES SOUTH FOR 10,000 FT. FOR MAG. & SOILS AT 200' CRS.



Department of  
Mines and Petroleum Resources  
ASSESSMENT REPORT  
NO. 1725 MAP 1

1725

INDEX  
NUMBER ON 2N AB (P.M.)  
243 23, 30, 405  
MAGNETOMETER SURVEY  
GAMMAS  
I.P. SURVEY - MAUSCO

DEL CLAIMS - BABINE AREA  
SURFACE PLAN - SOIL SAMPLING  
RIP VAN MINING LTD. (N.L.) OMINICA DISTRICT, B.C.  
1" = 500' DECEMBER, 1968  
S.J. HUNTER, P. ENG.

1726 map 01