

1824

GEOCHEMICAL AND DIP-NEEDLE SURVEYS

on the

MAG GROUP,

CARIBOO MINING DIVISION, B.C.

AGILIS EXPLORATION SERVICES LTD.

APRIL 1, 1969

TABLE OF CONTENTS

	Page
INTRODUCTION . . . . .	1
PROPERTY . . . . .	1
GEOLOGY . . . . .	1
DIP-NEEDLE SURVEY . . . . .	2
GEOCHEMICAL SURVEY . . . . .	2
CONCLUSIONS . . . . .	3

MAPS

Scale

Property Location Map	1 inch = 4 miles
Geochemical Survey (copper and molybdenum)	1 inch = 500 feet
Map Showing Dip-Needle readings	1 inch = 500 feet

Department of Mines and Petroleum Resources ASSESSMENT REPORT	
NO. <u>1824</u>	MAP

GEOCHEMICAL AND DIP-NEEDLE SURVEYS ON THE  
MAG GROUP, CARIBOO MINING DIVISION, B.C.

INTRODUCTION:

The Mag Group consists of 18 contiguous mineral claims situated 18 miles southeast of Queenal, British Columbia and is accessible by secondary roads from that center.

Relief throughout the claims area is low with elevations between 3000 and 3500 feet above sea-level.

During August and October of 1968 dip-needle and soil sampling surveys were conducted by Mr. A. Berglund over portions of 4 claims near the center of the group. The writer has compiled and assessed the results of these surveys.

PROPERTY:

The property consists of the following 14 mineral claims, restakings of part of a much larger group which have been allowed to lapse.

<u>Claim</u>	<u>Record Numbers</u>
Mag 1-14	45565 - 45578

GEOLOGY:

Overburden cover is extensive within the claims and surrounding area, thus little outcrop was observed during the surveys. From the limited information available the entire claims area appears to be underlain by intrusive rocks reported to be of dioritic composition.

The intrusive mass is in contact with schistose rocks to the east, the contact lying near the eastern edge of the claims. No geological maps are available for the immediate area, although mapping to the north and east indicates much of the area may be underlain by Triassic and/or Jurassic sediments and volcanics.

Aeromagnetic data shows a strong northwesterly trend in the area with an intense magnetic high, probably indicative of the intrusive, centered on the claim group.

#### DIP-NEEDLE SURVEY:

The dip-needle survey was conducted by A. Berglund and M. Caine during August 1968, using a Sharpe D-2 dip-needle.

Readings were taken at 200 foot intervals along an east-west base line extending the length of the claim group, and at the same interval on north-south cross-lines in the central portion of the group. A total of approximately 10,500 feet of base-line and 30,000 feet of cross-lines were surveyed. Lines were blazed and flagged while running the survey.

In taking readings the instrument is held facing perpendicular to the magnetic field and the number of degrees through which the needle swings from the vertical is read. This value is proportional to the intensity of the magnetic field at that point.

The survey indicated magnetic highs in the central portion of Mag #9 and the east-central portion of Mag #10. A trend slightly north of west is indicated although this can not be confirmed due to the limited extent of the survey.

#### GEOCHEMICAL SURVEY:

The geochemical survey was conducted over the same grid as the earlier dip-needle survey, with sampling carried out by A. Berglund during October, 1968.

Samples were collected with a small grub-hoe, and were taken wherever possible from the soil horizon lying immediately beneath the surface humous layer.

Analysis was by Chemex Labs Ltd. of North Vancouver, with all samples tested for molybdenum content. In addition, samples from 3 lines were tested for copper, with values for both reported in parts per million (ppm).

No anomalous conditions were indicated by the geochemical survey. Maximum molybdenum value is 1 ppm; copper values range between 6 and 57 ppm.

CONCLUSIONS:

The Mag claims are centered on a magnetic high, as indicated by a government aeromagnetic survey and the later dip-needle survey. This magnetic high probably represents a granitic intrusive outcropping in the area.

The limited geochemical survey failed to outline any anomalous conditions either for copper or molybdenum, although the area tested was very limited and would have to be expanded to fully investigate the claims area.

Respectfully Submitted,



R.D.H. Philp, P.Eng.

AGILIS EXPLORATION SERVICES LTD.



# Agilis Exploration Services Ltd.

CONSULTING ENGINEERS AND GEOLOGISTS

Telephone: 688-1508

201-714 WEST HASTINGS STREET, VANCOUVER 1, B.C.

*Copy for report 1824*

GOVERNMENT AGENT  
**RECEIVED**  
MAY 20 1969

May 13, 1969

Mr. F.E. Hughes,  
Mining Recorder,  
Box 5000,  
Quesnel, B.C.

Dear Sir:

QUESNEL, B.C.

Re: Mag 1-14 Mineral Claims, Geochemical -  
Geophysical Report.

In reply to your letter of April 29, 1969 to Mr.  
K. Kikegawa I wish to furnish the following information.

1. Mr. A. Berglund's qualifications: Mr. Berglund  
has been engaged in prospecting for at least 30 years and  
has had experience on dip-needle and soil sampling surveys  
since at least 1962 and possibly earlier. I have personally  
been associated with Mr. Berglund since that time and am  
confident of his ability to conduct such surveys.

2. The samples were packaged in Kraft envelopes  
and shipped to Vancouver for drying and testing.

3. The samples were dried in an electric oven at  
150° F and screened to -80 mesh.

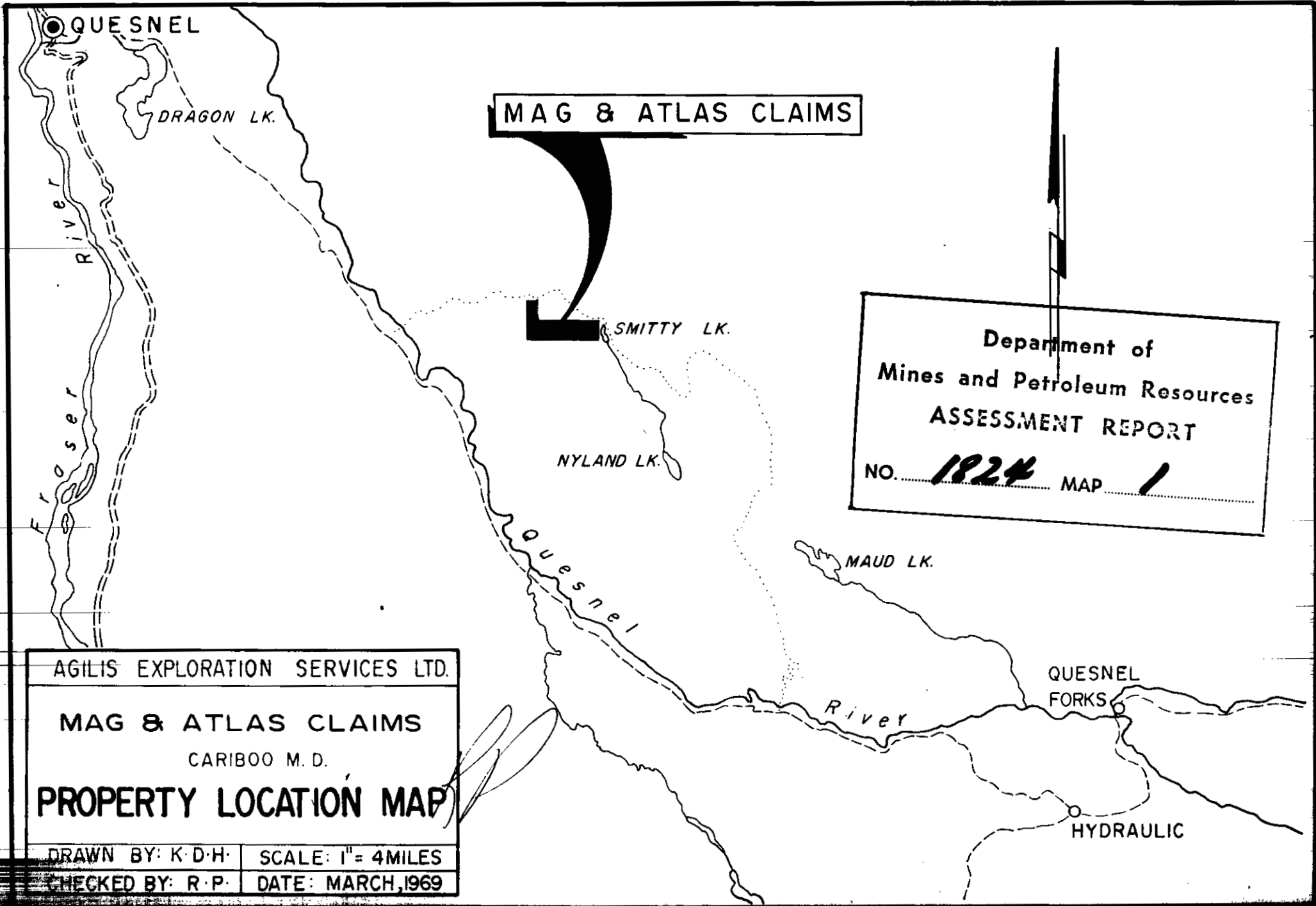
4. In testing, the samples were digested by  
perchloric - nitric acid and molybdenum content determined  
to 1 ppm. by the colorimetric procedure.

I trust the above will provide the information you  
require.

Yours truly,

R.H.D. Philp, P.Eng.

RHDP:jiw



DOMINION OF CANADA:  
PROVINCE OF BRITISH COLUMBIA.  
To Wit:

In the Matter of the geochemical and dip-needle surveys on the Mag Group, Cariboo Mining Division.

I, K. Kikegawa

of 201-714 W. Hastings St., Vancouver 1, B.C.

in the Province of British Columbia, do solemnly declare that the following personnel were employed and costs incurred in conducting the surveys.

Personnel:

A. Berglund	- Aug. 3-17, Oct. 4-15	=	\$ 810.00
	27 days @ \$30/day		
M. Caine	- Aug. 3-6	=	80.00
	4 days @ \$20/day		
R. Philp	- report, compile results	=	100.00
	1 day @ \$100/day		

Disbursements:

Camp costs	- 31 man-days @ \$7.00/day	=	217.00
Transportation		=	50.00
Testing samples		=	<u>133.20</u>
			<u>\$1390.20</u>

And I make this solemn declaration conscientiously believing it to be true, and knowing that it is of the same force and effect as if made under oath and by virtue of the "Canada Evidence Act."

Declared before me at the *City*  
of *Vancouver*  
Province of British Columbia, this *2*  
day of *April, 1969*

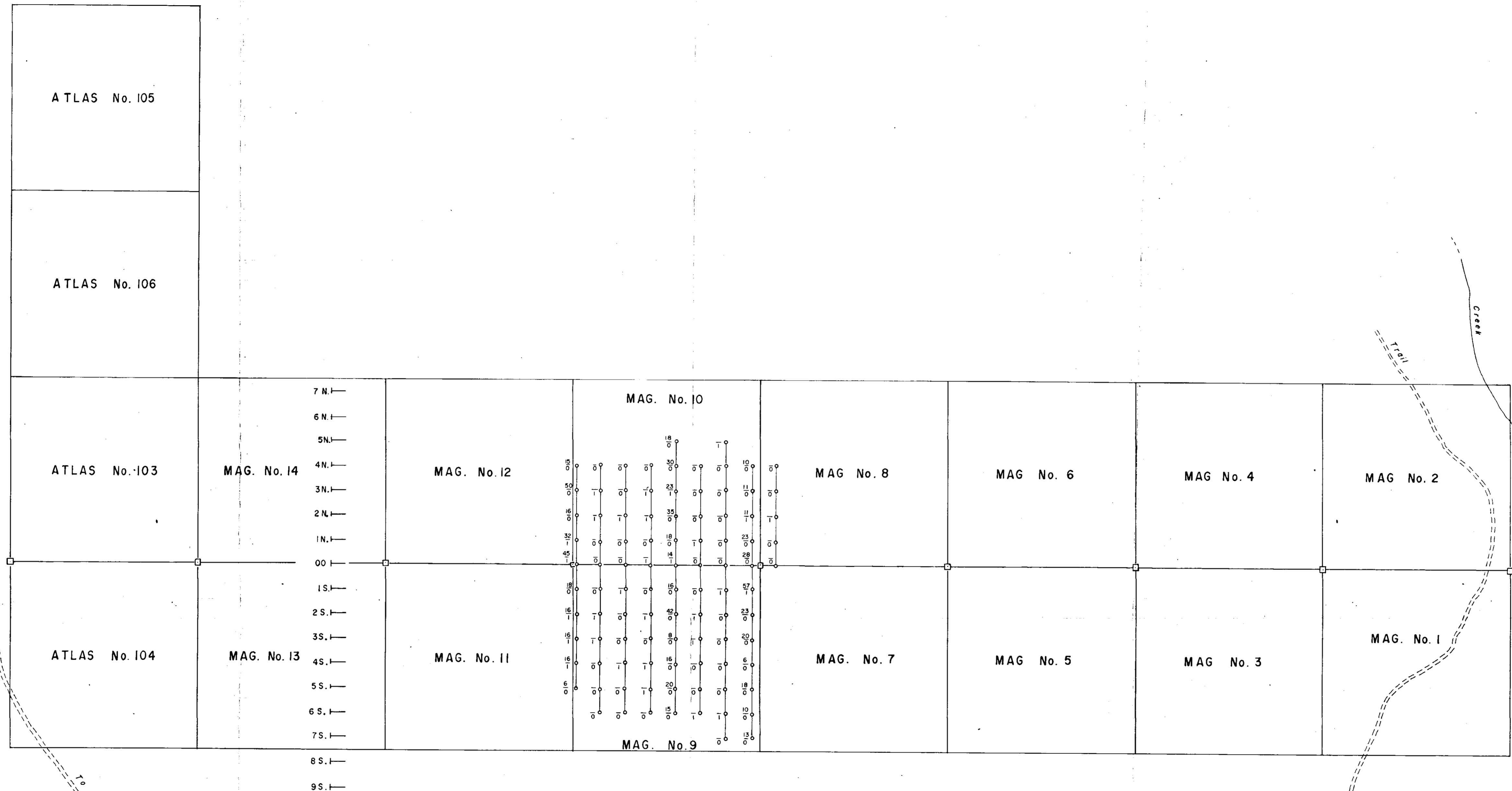
, in the presence of  
*K. Kikegawa*  
, A.D.

*J. Paul* SUB-MINING RECORDER  
A Commissioner for taking Affidavits for British Columbia or  
A Notary Public in and for the Province of British Columbia.



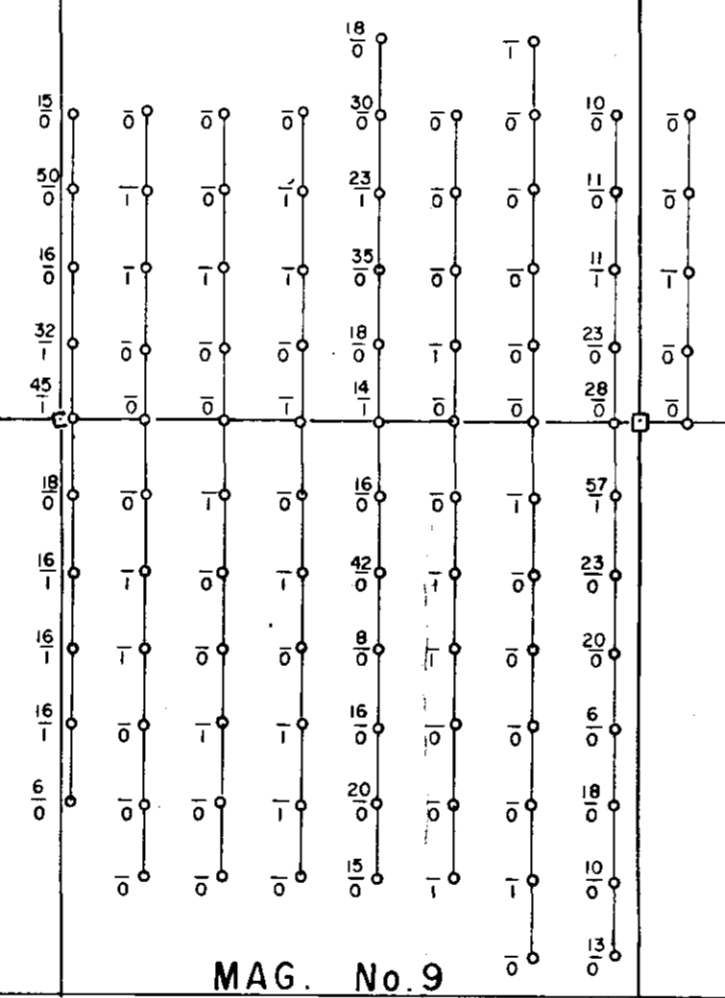
To Barkerville

To Niyond Lake

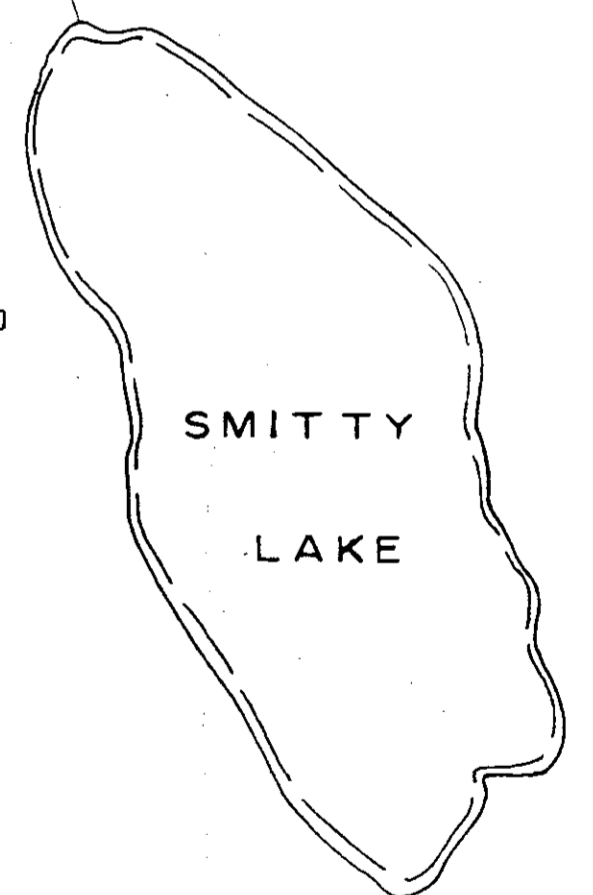


7 N. I.—  
6 N. I.—  
5 N. I.—  
4 N. I.—  
3 N. I.—  
2 N. I.—  
1 N. I.—  
00 I.—  
1 S. I.—  
2 S. I.—  
3 S. I.—  
4 S. I.—  
5 S. I.—  
6 S. I.—  
7 S. I.—  
8 S. I.—  
9 S. I.—

40 W. I.—  
39 W. I.—  
38 W. I.—  
37 W. I.—  
36 W. I.—  
35 W. I.—  
34 W. I.—  
33 W. I.—  
32 W. I.—  
31 W. I.—  
30 W. I.—  
29 W. I.—



Department of  
Mines and Petroleum Resources  
ASSESSMENT REPORT  
NO. **1824** MAP **2**



LEGEND

23 | — Copper value in ppm.  
1 | — Molybdenum value in ppm.

**1824**

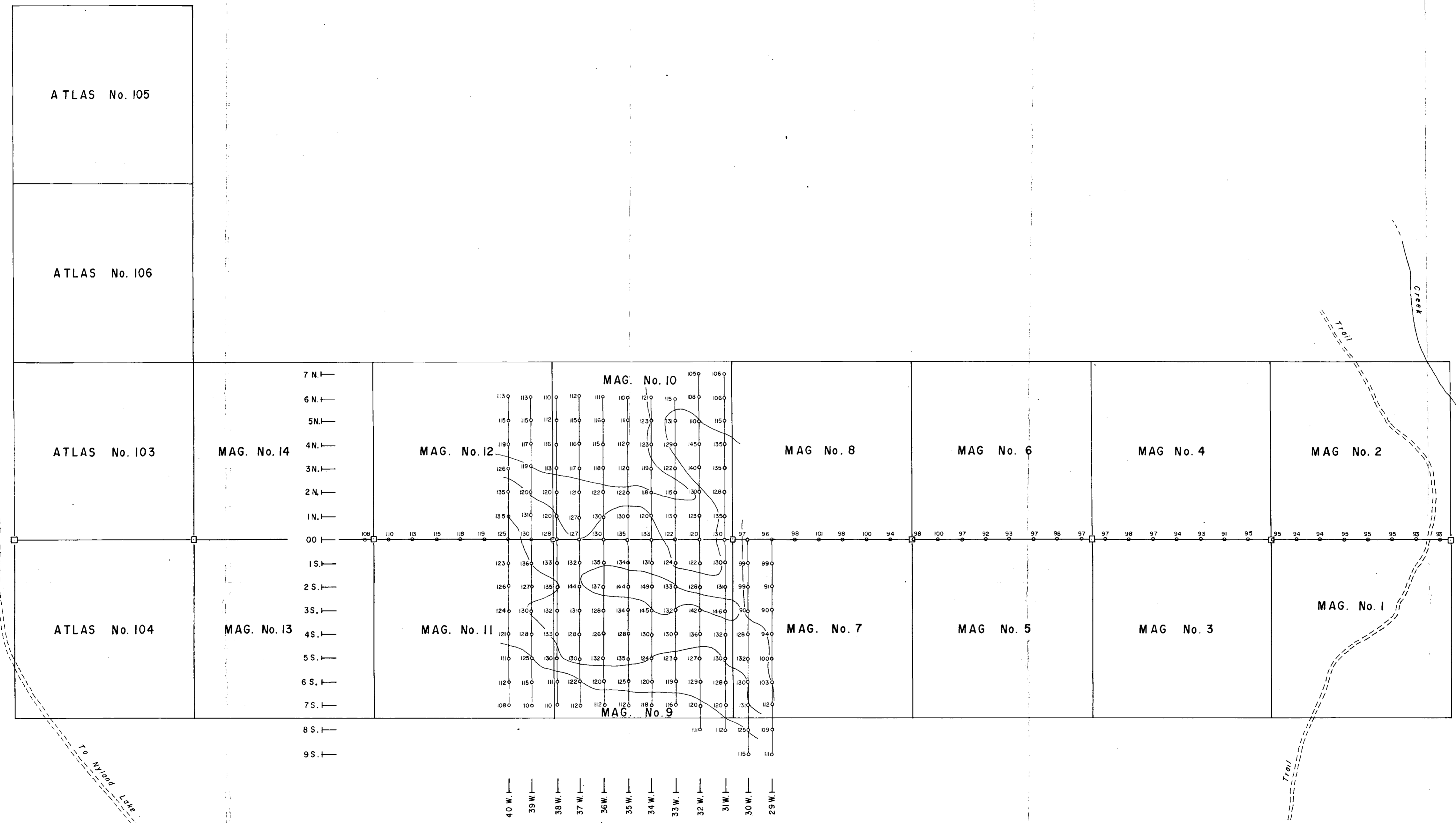
AGILIS EXPLORATION SERVICES LTD.

MAG & ATLAS CLAIMS  
**Geochemical Survey**  
COPPER & MOLYBDENUM  
CARIBOO M.D.

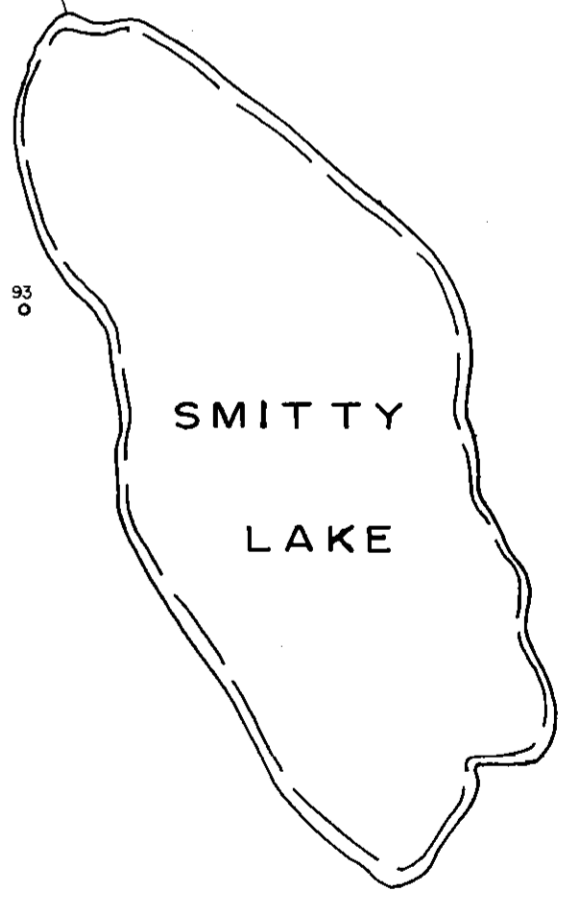
DRAWN BY: K. K.	SCALE: 1" = 500 Feet
MAPPING BY: A. B.	DATE: March, 1969

To Barkerville

To Nyland Lake



Department of  
Mines and Petroleum Resources  
ASSESSMENT REPORT  
NO. 1824 MAP 3



1824

AGILIS EXPLORATION SERVICES LTD.  
MAG & ATLAS CLAIMS  
MAP SHOWING  
Dip Needle Readings  
CARIBOO M.D. 2  
DRAWN BY: K. K. SCALE: 1" = 500 Feet  
MAPPING BY: A. B. DATE: March, 1969