

REPORT ON

GEOCHEMICAL & MAGNETOMETER SURVEYS

ON THE LEE GROUP, MAMIT LAKE, B.C.

DUDE 5 & 6	20628-20629
LEE 6	20574
ED 1-5	29666-29670

50°22' north latitude; 120°49' west longitude

50° 120° S.W.

Submitted by: B. Mottershead

Endorsed by: R.H.D. Philp, P.Eng.

Owner: Mamit Lake Mines Ltd.

Work conducted by Agilis Exploration Services
Ltd. during the period April 17-22, 1969.

*same
group as
deposits
11/7
/56-68*

1895

REPORT ON

GEOCHEMICAL & MAGNETOMETER SURVEYS,

MAMIT LAKE PROPERTY

MAMIT LAKE MINES LTD.

AGILIS EXPLORATION SERVICES LTD.

MAY 13, 1969

TABLE OF CONTENTS

	Page
INTRODUCTION	1
LOCATION & ACCESS	1
PHYSIOGRAPHY	1
CLAIMS	1
GEOCHEMICAL SURVEY	2
Sampling Procedure	2
Geochemical Testing	2
Interpretation of Results	2
Magnetometer Survey	2
CONCLUSIONS	3

MAPS

Scale

Magnetometer Survey

1 inch = 400 feet

Geochemical Survey

1 inch = 400 feet

Cost Distribution

Department of
Mines and Petroleum Resources
ASSESSMENT REPORT
NO. **1895** MAP

REPORT ON
GEOCHEMICAL & MAGNETOMETER SURVEYS,
MAMIT LAKE PROPERTY, MAMIT LAKE MINES LTD.

Introduction:

The Mamit Lake Property comprises a total of 161 claims in the Highland Valley area of British Columbia.

On April 18th. - 20th., 1969, geochemical and magnetometer surveys were conducted over 8 claims at the extreme south end of the claim group to test a possible zone of mineralization.

This report details the method of carrying out these surveys and the results obtained.

Location & Access:

The property is located approximately 18 miles due north of Merritt, B.C., and is easily accessible by an all-weather gravel road from Merritt.

Co-ordinates of the claims on which the work was performed are 50°22' north latitude, by 120°49' west longitude.

Physiography:

The claims extend westerly from the shoreline of Mamit Lake for about 1 mile rising from an elevation of approximately 3000 feet at the lake to more than 4000 feet.

Kame terraces consisting of unsorted glacial material are encountered along both sides of the valley containing Mamit Lake.

Claims:

The present work was carried out over all or part of the following claims.

	Record No.	Recording Date
ED 2	29667	25th. April 1967
ED 5	29670	25th. April 1967
DUDE 6	20629	16th. May 1967

Geochemical Survey:

The grid utilized was partially in existence at the start of the work. Lines R, S, & T were cleared out, the baseline was extended southerly an additional 800 feet and lines U and V were cut and flagged. Samples were taken every 100 feet along these lines.

Sampling Procedure:

An auger was used to collect the samples which were taken wherever possible from the soil horizon immediately underlying the humus layer. Samples generally consisted of a light coloured clay, occasionally sandy, taken at an average depth of 12" - 18".

At each sample location information regarding soil type, depth, vegetation and topography were recorded to be used later in interpreting the results.

Geochemical Testing:

Testing was carried out by Chemex Labs Ltd. of North Vancouver with all samples tested for total copper content by spectrographic analysis and values reported in parts per million.

Interpretation of Results:

Based on the frequency distribution of the obtained values the background concentration lies in the 35-45 ppm. range, and for purposes of interpretation can be taken as 40 ppm. Cu. On this basis values of 80 ppm. or higher can be considered as anomalous.

Only one anomaly was encountered which covers a significant area. This is located on line V at the baseline and extends northwesterly for a distance of 600 feet. It has a possible width of 600 feet and could extend further to the south. Although this anomaly covers a small area of swampy ground, the values are too high to be discounted on this basis alone.

Other isolated high values were obtained but are not considered to be of any significance at this time.

Magnetometer Survey:

A magnetometer survey was carried out using the geochemical grid lines with a Sharpe MF-1 fluxgate unit. Base

stations were established every 400 feet on the baseline and corrections made for the diurnal drift.

The object of the survey was to determine whether or not a granitic rock unit underlies the area near the lake and also to detect any magnetic lows which might be caused by alteration and accompanying mineralization.

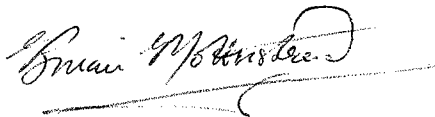
The contoured results of the survey do not indicate any major change in rock type within the survey area, but a low trend was detected extending northwest from line V at the baseline and coinciding approximately with the geochemical anomaly.

Conclusions:

The magnetometer survey indicated that there is no major change in the rock unit underlying the survey area but that a zone of alteration and possible accompanying mineralization are indicated by the low trend extending north from 2100 W on line V. The geochemical anomaly located slightly downslope to the east reinforces this possibility.

This zone should further be investigated by detailed geochemical methods.

Respectfully submitted,



Brian Mottershead.

Endorsed by,



R.H.D. Philp, P.Eng.

Agilis Exploration Services Ltd.

DOMINION OF CANADA:
PROVINCE OF BRITISH COLUMBIA.

To WIT:

In the Matter of the geochemical and magnetometer surveys on the Lee Group, Mamit Lake, British Columbia.

I, R. Philp

of 201-714 W. Hastings Street, Vancouver 1, B.C.

in the Province of British Columbia, do solemnly declare that the following personnel were employed and costs incurred in conducting the surveys between April 17-22, 1969.

Personnel:

Brian Mottershead: geologist - supervision and report. 3 days @ \$60.00/day.	\$180.00
Klaus Hektor: magnetometer operator, soil sampler, plotting results. 5 days @ \$40.00/day	\$200.00
J. Wiggins: helper. 2 days @ \$27.50/day	\$ 55.00
K. Kikegawa: drafting. 22 hours @ \$5.00/hour	\$110.00

Disbursements:

Geochemical testing	\$162.75	
Magnetometer rental	50.00	
Camp charges- meals & accomodation. 6 man-days @ \$8.00/day	48.00	
Transportation, fuel	63.78	
Travel, miscellaneous	27.62	
	<u>\$352.15</u>	<u>\$352.15</u>

Total charges: \$897.15

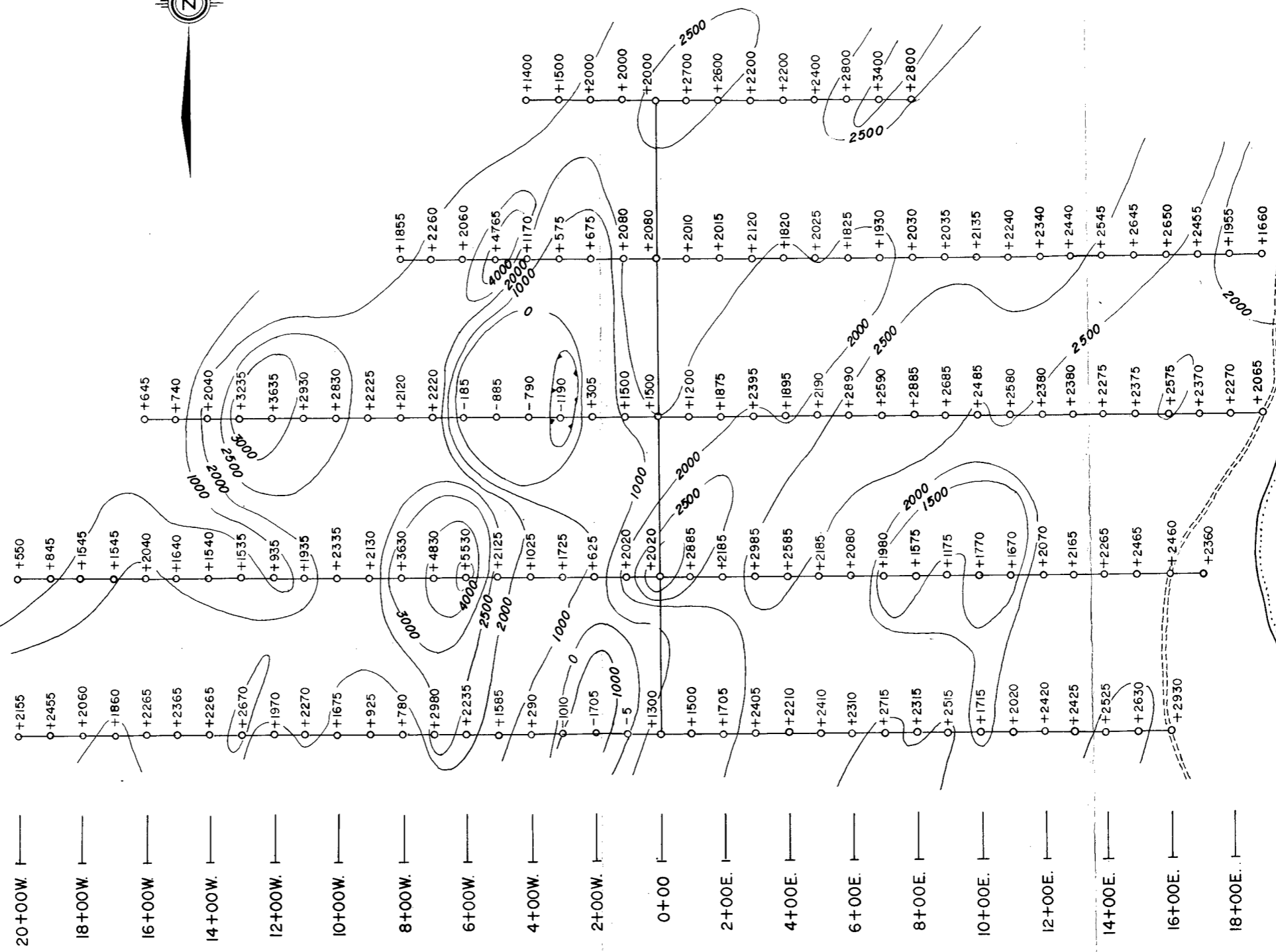
And I make this solemn declaration conscientiously believing it to be true, and knowing that it is of the same force and effect as if made under oath and by virtue of the "Canada Evidence Act."

Declared before me at the *City*
of *Vancouver*, in the
Province of British Columbia, this *14th*
day of *May, 1969*, A.D.

J. Paul Sub-mining Recorder
A Commissioner for taking Affidavits for British Columbia or
A Notary Public in and for the Province of British Columbia.



L-R
L-S
L-T
L-U
L-V



20+00W. | 18+00W. | 16+00W. | 14+00W. | 12+00W. | 10+00W. | 8+00W. | 6+00W. | 4+00W. | 2+00W. | 0+00 | 2+00E. | 4+00E. | 6+00E. | 8+00E. | 10+00E. | 12+00E. | 14+00E. | 16+00E. | 18+00E.

○ +2980 Magnetometer value in gammas.
 — 1000 Contour in gammas.

Department of
 Mines and Petroleum Resources
 ASSESSMENT REPORT
 NO. **1895** MAP **#1**

AGILIS EXPLORATION SERVICES LTD.
 MAMIT LAKE MINING LTD. (N.P.L.)
 Magnetometer Survey
 DRAWN BY: K. K. SCALE: 1" = 400 Feet
 CHECKED BY: R. P. DATE: April, 1969

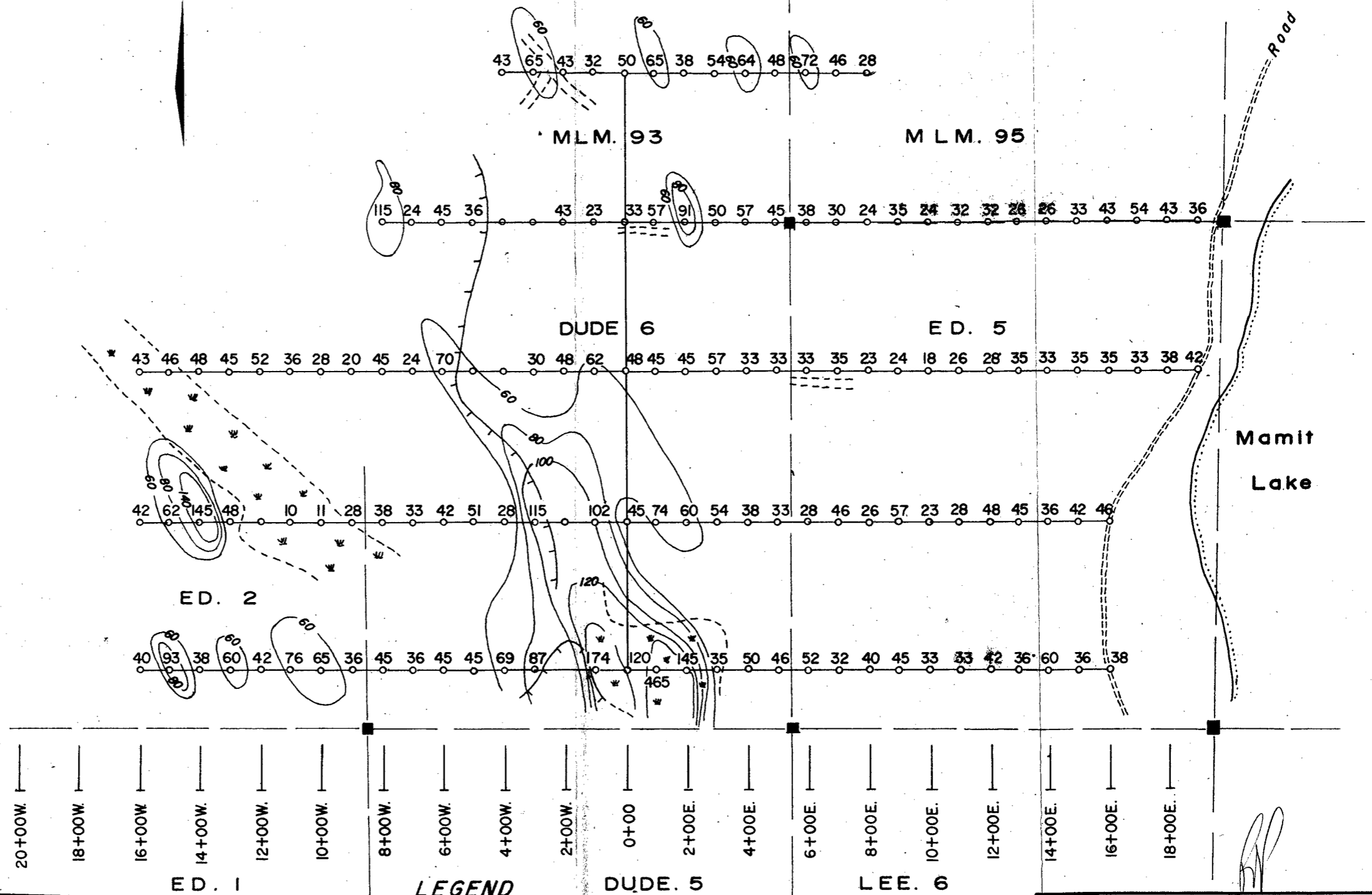
Mamit
 Lake

Road

RP



L-R
L-S
L-T
L-U
L-V



Department of
Mines and Petroleum Resources
ASSESSMENT REPORT
NO. **1895** MAP **#2**

- LEGEND**
- 87 COPPER VALUE (in ppm)
 - CLIFF
 - TRENCH
 - SWAMP
 - 60 Copper contour in ppm

AGILIS EXPLORATION SERVICES LTD.	
MAMIT LAKE MINING LTD. (N.P.L.)	
Geochemical Survey	
DRAWN BY: K. K.	SCALE: 1" = 400 Feet
CHECKED BY: R. P.	DATE: April, 1969