

1944

COMINCO LTD.

EXPLORATION

WESTERN DISTRICT

LINE CUTTING IN PREPARATION FOR
GEOPHYSICAL SURVEY ON THE BIN CLAIMS,
NOS. 29 TO 48, 63, 64, 79 TO 114, 116 TO 128,
163, AND 164; AND ON THE BIN FRACTIONAL CLAIMS
NOS. 115, 162, 165, AND 166, SITUATED 15 MILES
SOUTHEAST OF SPENCES BRIDGE, WITHIN THE
KAMLOOPS MINING DIVISION
50°20' N, 121°02' W
NTS: 92 I 6

BIN "A" GROUP - 38 claims and two fractional claims

| <u>Claim</u> | <u>Record Nos.</u> | <u>Requested Assessment Credit</u> |
|-------------------|--------------------|------------------------------------|
| Bin 29-40 | 70408-70419 | 1 year each claim |
| Bin 41-46 | 70420-70425 | -- |
| Bin 47,48 | 70865,70866 | -- |
| Bin 63,64 | 70881,70882 | -- |
| Bin 95-100 | 71682-71687 | -- |
| Bin 105-110 | 71692-71697 | -- |
| Bin 127,128 | 71714,71715 | -- |
| Bin 163,164 | 71914,71915 | -- |
| Bin 165Fr.,166Fr. | 71916,71917 | -- |

Total: 12 years

Work was carried out on the above claims during the period July 3rd to July 31, 1969.

BIN "B" GROUP - 35 claims and two fractional claims

| <u>Claim</u> | <u>Record Nos.</u> | <u>Requested Assessment Credit</u> |
|--------------|--------------------|------------------------------------|
| Bin 79-94 | 71482-71497 | 1 year each claim |
| Bin 101-104 | 71688-71691 | 1 year each claim |
| Bin 111-114 | 71698-71701 | -- |
| Bin 115Fr. | 71702 | 1 year |
| Bin 116-126 | 71703-71713 | -- |
| Bin 162Fr. | 71913 | -- |

Total: 21 years

Work was carried out on these claims during the period July 3rd to July 31, 1969.

REPORT BY

R. J. NICHOLSON, B.A.Sc.

UNDER THE SUPERVISION OF

J. RICHARDSON, P. ENG.

Department of
Mines and Petroleum Resources
ASSESSMENT REPORT
NO. 1944B MAP

COMINCO LTD.

EXPLORATION

WESTERN DISTRICT

REPORT ON LINE CUTTING COMPLETED
ON THE BIN GROUP OF MINERAL CLAIMS
DURING THE PERIOD JULY 3 TO JULY 31, 1969,
IN THE KAMLOOPS MINING DIVISION,
15 MILES SOUTHEAST OF SPENCES BRIDGE
50°20' N, 121°02' W
NTS: 92 I 6

Approximately 27 miles of line have been cut and chained with stations set, on the Bin group of 73 claims and four fractions. Of this total length, 8.9 miles were cut on the Bin A group of 38 claims and two fractions, and 18 miles were cut on the Bin B group of 35 claims and two fractions.

Line cutting on the Bin A group is summarized as follows:

Base line bearing E-W completed; cut, chained, and stations set from 15E to 45W.

Cross lines bearing N-S completed; cut, chained, and stations set each 100' as follows:

| <u>Line</u> | <u>Footage</u> |
|-------------|-----------------------------------|
| 15E | 2+00N to 38+00S |
| 10E | 31+50N to 34+00N, 2+00N to 39+00S |
| 5E | " " " , " " 43+00S |
| 0 | " " " , " " 47+00S |
| 5W | " " " , " " 50+00S |
| 10W | " " " , " " 50+00S |
| 15W | " " " , " " 29+50S |
| 20W | " " " , " " 29+50S |
| 25W | " " " , " " 29+50S |
| 30W | " " " , " " 0+00 |
| 35W | " " " , " " 0+00 |
| 40W | " " " , " " 0+00 |
| 45W | " " " , " " 0+00 |

Line cutting on the Bin B group is summarized as follows:

Base line bearing E-W completed; cut, chained, and stations set from 15E to 70E.

Cross lines bearing N-S completed; cut, chained, and stations set each 100' as follows:

| <u>Line</u> | <u>Footage</u> |
|-------------|----------------------|
| 65E | 0+00 to 38+00S, |
| 60E | " " " |
| 55E | " " " |
| 50E | " " " |
| 45E | " " " |
| 40E | " " " 0+00 to 27+50N |
| 35E | " " " " " " |
| 30E | " " " " " " |
| 25E | " " " " " " |
| 20E | " " " " " " |
| 15E | 2+00N " 27+50N |
| 10E | " " 31+50N |
| 5E | " " " |
| 0 | " " " |
| 5W | " " " |
| 10W | " " " |
| 15W | " " " |

| <u>Line</u> | | | |
|-------------|-------|----|--------|
| 20W | 2+00N | to | 31+50N |
| 25W | " | " | " |
| 30W | " | " | " |
| 35W | " | " | " |
| 40W | " | " | " |
| 45W | " | " | " |

ATTACHMENTS:

- (1) Plan of Grid Lines, Scale 1" = 1000', Plate Bin 69-6
- (2) Expenditure Statement.
- (3) Statutory Declaration Relating to Expenditures

Report By *R. J. Nicholson*
R. J. Nicholson

RJN:mk
August 11, 1969
Distribution

Endorsed By *J. Richardson P. Eng.*
J. Richardson

Mining Recorder 2
Western District 1
Author - RJN 1

COMINCO LTD.

EXPLORATION

WESTERN DISTRICT

EXPENDITURE STATEMENT
LINE CUTTING
BIN GROUP
KAMLOOPS MINING DIVISION

BIN "A" GROUP

Salaries

| | |
|--|----------|
| 1 Senior Geologist (R. J. Nicholson) | \$ 50.00 |
| 1 day July 3 to 31 @ \$50/man day | |
| 2 Field Assistants (M.D. McInnis, G.E. Grisak) | 120.00 |
| 2 days each July 3 to 31 @ \$30/man day | |
| 1 Draughtsman | 20.00 |
| ½ day @ \$40/man day | |

Contract Charges

| | |
|-------------------------------------|--------|
| Line cutting contract (Audet Bros.) | |
| 8.9 miles @ \$100/mile | 890.00 |

Camp Services

100.00

Transportation

| | |
|---------------------------------|--------------|
| Truck Rental (3days @ \$15/day) | <u>45.00</u> |
|---------------------------------|--------------|

\$ 1,225.00

BIN "B" GROUP

Salaries

| | |
|--|----------|
| 1 Senior Geologist (R.J. Nicholson) | \$ 50.00 |
| 1 day July 3 to 31 @ \$50/man day | |
| 2 Field Assistants (M.D. McInnis, G.E. Grisak) | 120.00 |
| 2 days each July 3 to 31 @ \$30/man day | |
| 1 Draughtsman | 20.00 |
| ½ day @ \$40/man day | |

Contract Charges

| | |
|-------------------------------------|----------|
| Line cutting contract (Audet Bros.) | |
| 18 miles @ \$100/mile | 1,800.00 |

Camp Services

100.00

Transportation

| | |
|----------------------------------|--------------|
| Truck Rental (3 days @ \$15/day) | <u>45.00</u> |
|----------------------------------|--------------|

\$ 2,135.00

Signed *R. J. Nicholson*
R. J. Nicholson

This is Exhibit "A" to the Statutory Declaration of
R. J. Nicholson declared before me the...11th.....
day of August, 1969.

[Signature]
A Commissioner for Taking Affidavits for British
Columbia

DOMINION OF CANADA:)
PROVINCE OF BRITISH COLUMBIA) IN THE MATTER OF
TO WIT:)

STATUTORY DECLARATION RELATING
TO EXPENDITURES ON LINE CUTTING
OF THE BIN GROUP,
KAMLOOPS MINING DIVISION

I, ROBERT JOHN NICHOLSON, Professional Engineer

of the City of Vancouver

in the Province of British Columbia, do solemnly declare that

1. Copies of a report on line cutting in preparation for geophysical surveys on certain mineral claims situated in the Kamloops Mining Division are being filed with the Mining Recorder in Vancouver.

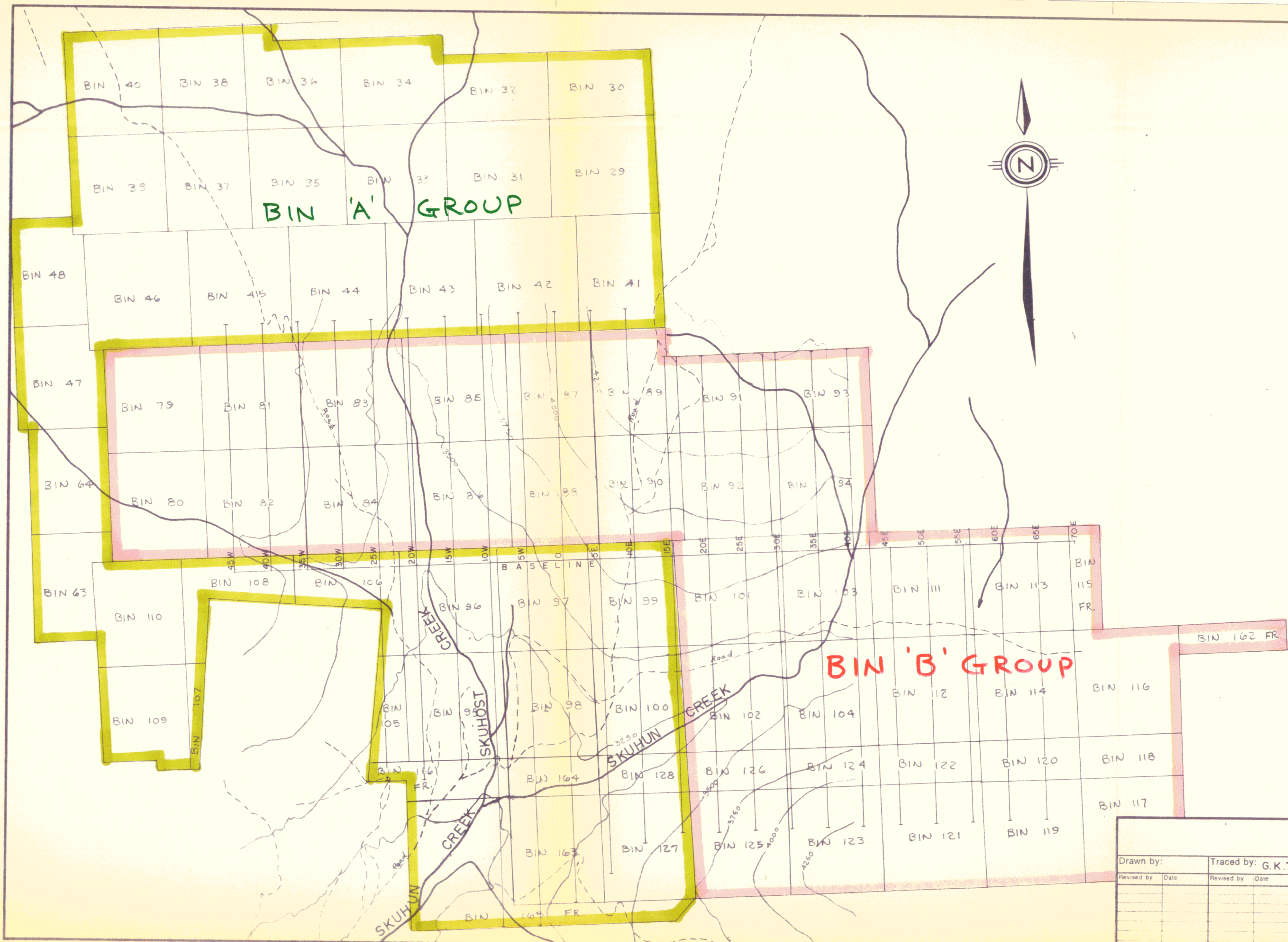
2. Attached hereto and marked with the letter "A" upon which I have signed my name at the time of declaring hereof, is a statement of expenditures incurred in connection with the line cutting of the said claims showing in addition the dates during which those making the said survey performed their work.

And I make this solemn declaration conscientiously believing it to be true, and knowing that it is of the same force and effect as if made under oath and by virtue of the "Canada Evidence Act."

Declared before me at the City)
of Vancouver in the Province of)
British Columbia, this 11th day)
of August 1969 , A.D.)

R. J. Nicholson P. Eng.

[Signature]
A Commissioner for taking Affidavits for
British Columbia



Department of
Mines and Petroleum Resources
ASSESSMENT REPORT
NO. **1944** MAP #1

1944

To accompany Line-Cutting Report by R.J. Nicholson on
the Bin Claims at the junction of Skuhun and Skuhost Creeks
Kamloops M.D., dated August 11, 1969

R.J. Nicholson

| | |
|-------------|-------------------|
| Drawn by: | Traced by: G.K.T. |
| Revised by: | Revised by: |
| Date: | Date: |
| | |
| | |
| | |
| | |
| | |

**BIN PROPERTY
PLAN OF GRID LINES**

Scale: 1" = 1000' Date: AUG. 5, 1969 Plate: BIN 69-6



N.T.S. 92 I 6
#210-0640