

Geophysical Report

on

Claims: Ken 1-8, Rosso 1, Duke 1-4,
Fix 50-69, Fix 72-74

Similkameen Mining Division

Located 25 miles Northeast of Princeton
49° 120° NE

by

Rae G. Jury, P. Eng.

92H16w

for

QUALITY EXPLORATION CORPORATION LTD.

May 7, 1969 to July 11, 1969

2005

QUALITY EXPLORATION CORPORATION LTD.
Spa Mines Project
Magnetometer Survey of Mabel Claims
Sivash Creek Area, B. C.

ALRAE ENGINEERING LTD.

September 12, 1969

TO PROTECT OUR CLIENTS, THE PUBLIC AND OURSELVES, ALL REPORTS ARE SUBMITTED AS THE CONFIDENTIAL PROPERTY OF CLIENTS AND AUTHORIZATION FOR PUBLICATION OF STATEMENTS, CONCLUSIONS AND EXTRACTS FROM OUR REPORTS MUST RECEIVE OUR WRITTEN APPROVAL.

ALRAE ENGINEERING LTD.
VANCOUVER, B.C.
ENGINEERS & GEOLOGISTS

TABLE OF CONTENTS

| | Page |
|------------------------------------------|------|
| INTRODUCTION | 1 |
| LOCATION AND ACCESS. | 1 |
| CLAIMS | 1 |
| GEOLOGICAL SETTING | 2 |
| MAGNETOMETER SURVEY. | 2 |
| INTERPRETATION | 3 |
| CONCLUSIONS AND RECOMMENDATIONS. | 4 |
| TIME AND COST DISTRIBUTION | 5 |

MAPS

| | Scale |
|--------------------------------------------|-------------|
| Index to Map Sheets | 1" = 1,500' |
| Topography and Claims - Sheet 2 | 1" = 400' |
| Magnetometer Survey - Sheet 2a | 1" = 400' |
| Magnetometer Contour Overlay - Sheet 2b | 1" = 400' |
| Magnetometer Survey - Sheet 3a | 1" = 200' |
| Magnetometer Contour Overlay - Sheet 3b | 1" = 200' |

TO PROTECT OUR CLIENTS, THE PUBLIC AND OURSELVES, ALL REPORTS ARE SUBMITTED AS THE CONFIDENTIAL PROPERTY OF CLIENTS AND AUTHORIZATION FOR PUBLICATION OF STATEMENTS, CONCLUSIONS AND EXTRACTS FROM OUR REPORTS MUST RECEIVE OUR WRITTEN APPROVAL.

INTRODUCTION

A ground magnetometer survey has been conducted over grid lines on the Mabel group of claims during the period May 7th to July 11th, 1969. From four to six men were employed in this work and during the survey prepared approximately 140,200 feet of grid line from a central base line near Siwash Creek, 2.55 miles in length. Cross lines from the base line were made each 400 feet and stations for instrument readings established each 100 feet along these lines. A map of the area surveyed, a claim map showing the relation of the grid to the claims, and a contour presentation of the magnetics are included with this report. An index map shows the relationship of the various map sheets.

Geological mapping has been completed over the entire project area and is being prepared in a separate report. The same base maps have been used for this work as for the magnetic survey data.

LOCATION AND ACCESS

The Mabel group of claims of the Spa Mines project is located approximately 25 miles northeast of Princeton and six miles north of Bankier on the Princeton to Summerland road. Access is provided by logging roads turning off at Bankier near Osprey Lake and going northward along the valley of Siwash creek to the claims. Total distance from Princeton to the claim group is approximately 35 miles.

The Spa Mines camp buildings provide good accommodation and in dry weather this camp is readily accessible by two wheel drive vehicle.

The base line for the survey is along the Siwash Creek valley on the lower slopes of the valley and the cross lines go to

the east and west of the base line, upslope, and out of the valley. Relief within the grid is approximately 500 feet.

CLAIMS

This magnetometer survey covered most of the claims within the Mabel group. Claims and their record numbers are as follows:

| <u>CLAIM NAME</u> | <u>RECORD NUMBER</u> |
|-------------------|----------------------|
| Ken 1 - 8 | 23828 - 23835 |
| Rosso 1 | 9013 |
| Duke 1 - 4 | 19291 - 19294 |
| Fix 50 - 69 | 15645 - 15664 |
| Fix 72 - 74 | 15584 - 15586 |

All 36 claims are within the Similkameen Mining Division.

GEOLOGICAL SETTING

Geological mapping indicates this claim group to be underlain by Jurassic or later siliceous intrusives (granite and granodiorite) and tuffs which are probably of the Upper Triassic Nicola Group. Chalcopyrite, galena, tetrahedrite and sphalerite have been encountered in bulldozer trenching work, and drilling, in the vicinity of the camp buildings and are within the area of the magnetometer survey. Disseminated magnetite is known to be associated with this mineralization. Mineralization exposed in this trenching has been called the Mabel Zone.

MAGNETOMETER SURVEY

Detailed ground magnetometer survey was conducted on the grid lines during May 7th to July 5th, 1969. A Sharpe fluxgate magnetometer, Model MP-1 was used in this survey and readings were taken each 100 feet along the crosslines spaced 400 feet apart. Baseline stations were used for control check points and background level of the instrument was set to coincide with earlier magnetic survey work on the claims immediately to the west (known as the

Dillard claims) which also belong to the Spa Mines project. Diurnal and day-to-day corrections were made for all stations throughout the survey and the corrected readings are plotted on the accompanying map sheets.

As may be seen from the contouring of magnetometer readings, approximately 1,200 gammas of magnetic relief is apparent throughout this survey grid. A linear high occurs near the centre of the grid striking in a northerly direction. Other isolated and discontinuous highs are also to be noted.

Detailed magnetic work at a grid spacing 200 by 100 feet was done over the Mabel Zone. This work is presented as a separate inset map sheet at a scale of one inch equal to 200 feet.

INTERPRETATION

As may be seen from the accompanying map sheets, magnetic highs are approximately 1,000 gammas above background level and occur as irregular and sinuous anomalous forms elongate northerly. The detailed magnetic survey over the Mabel mineralized zone indicates a coincident magnetic high with known mineralization exposed in bulldozer trenches. Disseminated magnetite occurs with this mineralization and would account for the anomaly.

An irregular, sinuous magnetic high strikes southerly and begins about 600 feet south of the Mabel mineralization and extends for 900 feet south of this point. There is no explanation for the cause of this anomaly but it may indicate similar mineralization to that exposed in the Mabel bulldozer trenches.

A second sinuous, irregular high anomaly occurs in the vicinity of 64N and 272E of the grid and although geological mapping indicates no outcrop exposure within the anomalous magnetic high, it

is apparent that the underlying rock type is granite. Should other survey work (i.e.: soil sampling) indicate anomalies in this vicinity the target would be worthy of exploration.

Isolated magnetic lows in some cases coincide with fault zones indicated by geological mapping. This possibly is due to local rock alteration associated with faulting

CONCLUSIONS AND RECOMMENDATIONS

The ground magnetometer survey of the Mabel group of claims along Siwash creek has indicated the broad structural trends which may serve to assist in interpretation of geological mapping. Mineralization exposed in the Mabel Zone trenches is coincident with high magnetic readings (approximately 1,000 gammas above background). A similar high extends southerly from the trenched area and may also indicate sulphide mineralization. A second and somewhat larger anomaly occurs 2,700 feet to the southeast of the Mabel mineralization but the cause of this anomaly is as yet unexplained.

Trenching or drilling work may be required to examine the cause of the two above described and unexplained anomalies. Choice of the location of this physical work may be assisted by geochemical soil sampling data.

Respectfully submitted:


Rae G. Jury, P. Eng.

TIME AND COST DISTRIBUTION

Quality Exploration Corporation Ltd.
Geophysical Survey, Line Cutting and Magnetometer Survey
Habel Claims

| | <u>Occupation</u> | <u>Dates</u> | <u>Total</u> |
|--------------------------------------------|---------------------------------------|-------------------------------------------------|--------------------|
| Dr. J.G. Simpson | Field Geologist | June 2, 3, 24/69 | \$ 318.12 |
| G. D. House | Field Supervisor | May 7-31/69, June 1, 2/69 | 1,783.08 |
| M. Eccles | Line Cutter | May 8-31/69 June 1-7/69 | 1,272.24 |
| G. Rattray | Line Cutter | May 8-31/69 June 1-6/69 | 931.20 |
| R. Casimer | Line Cutter | May 7-31/69 June 1-20/69 | 1,346.76 |
| E. Rickli | Mag. Operator | May 20-31/69 June 1-15, 17-30/69 July 1-5 | 2,117.84 |
| D. Gibson | Line Cutter | June 21-30/69 | 310.40 |
| R.G. Jury | Supervision and Report Preparation | May 27, 28, 29, 30/69 | 371.14 |
| E. Robbins | Draftsman | July 7, 8, 9, 10, 11/69 | 175.00 |
| | | | <u>\$ 8,625.78</u> |
| Equipment Rentals - Magnetometer s/n 21104 | | | 525.00 |
| Radio Communication | | | 150.00 |
| Transportation - 4x4 vehicle on claims | | | 100.00 |
| Miscellaneous Field Supplies | | | <u>298.70</u> |
| | | | <u>\$ 1,073.70</u> |
| | | | <u>\$ 9,699.48</u> |

TO PROTECT OUR CLIENTS, THE PUBLIC AND OURSELVES, ALL REPORTS ARE SUBMITTED AS THE CONFIDENTIAL PROPERTY OF CLIENTS AND AUTHORIZATION FOR PUBLICATION OF STATEMENTS, CONCLUSIONS AND EXTRACTS FROM OUR REPORTS MUST RECEIVE OUR WRITTEN APPROVAL.

And I make this solemn declaration conscientiously believing it to be true, and knowing that it is of the same force and effect as if made under oath and by virtue of the "Canada Evidence Act."

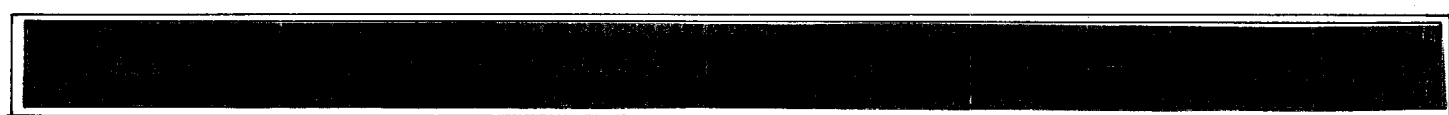
Declared before me at the city
of Vancouver, in the
Province of British Columbia, this 30th
day of September, 1969, A.D.

Rae L. Jury

R. John Rogers
A Commissioner for taking Affidavits within British Columbia or
A Notary Public in and for the Province of British Columbia.

sheet nos. 1,1a,1b,1c.

sheet nos. 2,2a,2b,2c.



Rae & Gray

2005

Mines and Geology
 Act, 1988
 NO. 2005 #4

| | |
|------------------------------------------------------------------------|------------------------|
| QUALITY EXPLORATION CORPORATION | |
| SPA MINES PROJECT | |
| INDEX AND CLAIM LOCATION MAP | |
| ALRAE ENGINEERING LTD. GEOLOGISTS AND ENGINEERS VANCOUVER, B. C. | |
| DESIGNED... G.H. | SCALE: HOR. 1" = 1500' |
| DRAWN... E.R. | VERT. |
| CHECKED... R.G.J. | DWG. No. 5500-12 |
| DATE... SEPTEMBER 1989 | |



2005

Department of
Mines and Petroleum Resources
ASSESSMENT REPORT
NO. 2005 MAP #1

SKT BY ROJURY P ENG, ON THE
EX. SIMLKAMEEN MINING

Rae Spurr

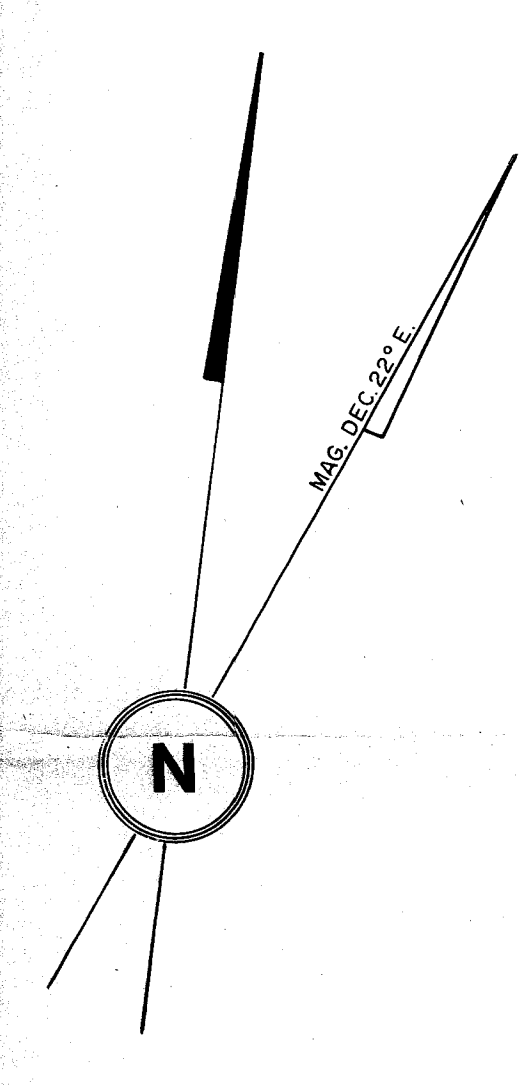
| QUALITY | EXPLORATION | CORPORATION |
|-----------------------------------------------------------------------|-----------------------|-------------|
| SPA MINES PROJECT CLAIMS & TOPOGRAPHY | | |
| ALBAE ENGINEERING LTD. GEOLOGISTS AND ENGINEERS VANCOUVER, B.C. | | |
| DESIGNED: M. P. | SCALE: HOR. 1" = 400' | VERT. |
| DRAWN: M. P. | | |
| CHECKED: R. S. J. | DWG. No. 5500-9 | |
| DATE: JUNE 69 | SHEET NO - 2 | |



NOTE: TO ACCOMPANY THE GEOPHYSICAL REPORT BY R.S. JURY 2 Pgs., ON THE
 SPA MINES LTD. CLAIMS, SIVASH CREEK, SHILKAMEEN MINING
 DIVISION, DATED SEPT. 12, 1969.

R.S. Jury

| | | | | | |
|-------|-------|-------|-------|-------|-------|
| 192 E | 196 E | 200 E | 204 E | 208 E | 212 E |
| 300 | 300 | 300 | 300 | 300 | 300 |
| 310 | 310 | 310 | 310 | 310 | 310 |
| 320 | 320 | 320 | 320 | 320 | 320 |
| 330 | 330 | 330 | 330 | 330 | 330 |
| 340 | 340 | 340 | 340 | 340 | 340 |
| 350 | 350 | 350 | 350 | 350 | 350 |
| 360 | 360 | 360 | 360 | 360 | 360 |
| 370 | 370 | 370 | 370 | 370 | 370 |
| 380 | 380 | 380 | 380 | 380 | 380 |
| 390 | 390 | 390 | 390 | 390 | 390 |
| 400 | 400 | 400 | 400 | 400 | 400 |
| 410 | 410 | 410 | 410 | 410 | 410 |
| 420 | 420 | 420 | 420 | 420 | 420 |
| 430 | 430 | 430 | 430 | 430 | 430 |
| 440 | 440 | 440 | 440 | 440 | 440 |
| 450 | 450 | 450 | 450 | 450 | 450 |
| 460 | 460 | 460 | 460 | 460 | 460 |
| 470 | 470 | 470 | 470 | 470 | 470 |
| 480 | 480 | 480 | 480 | 480 | 480 |
| 490 | 490 | 490 | 490 | 490 | 490 |
| 500 | 500 | 500 | 500 | 500 | 500 |



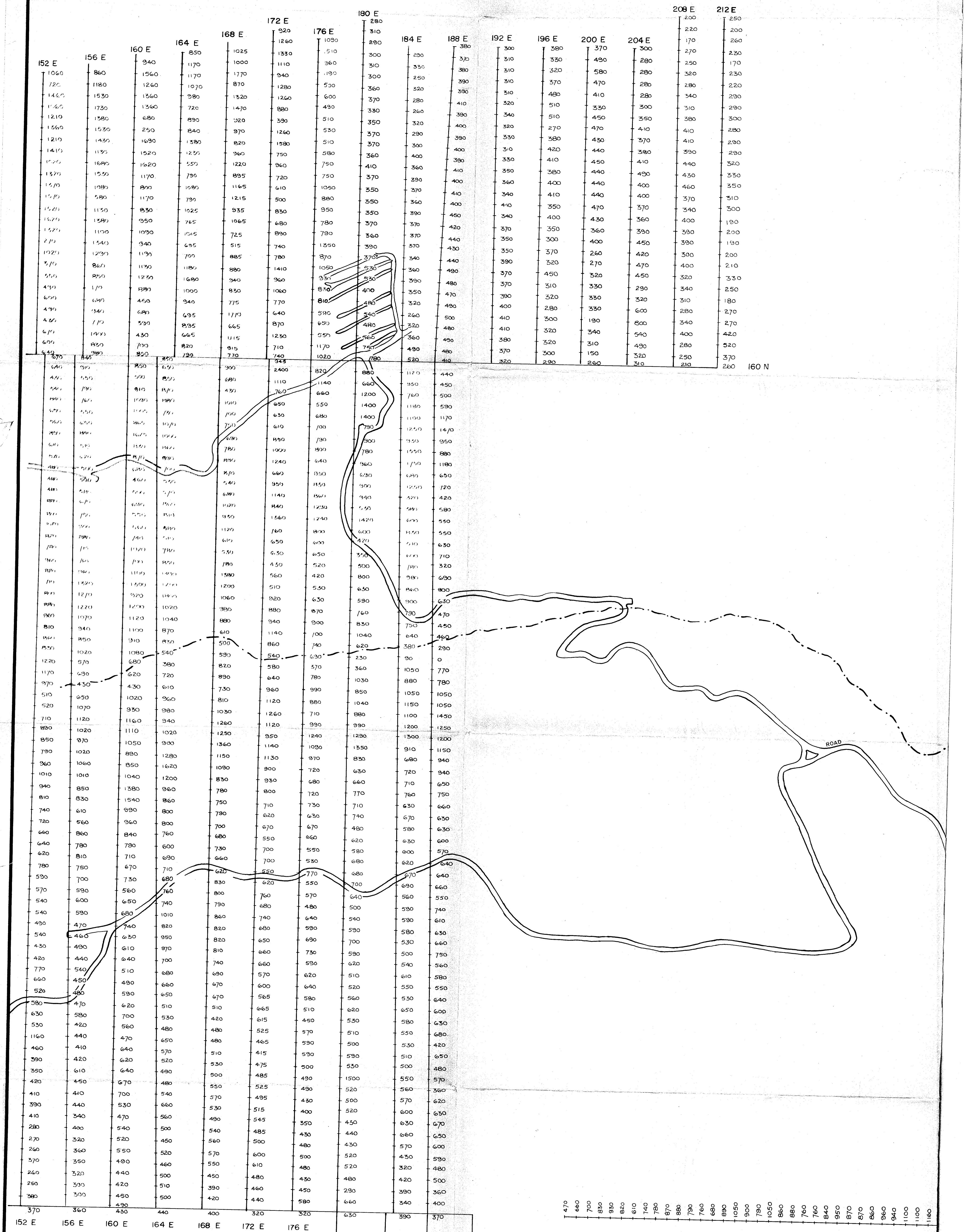
BY R.G. BRYDEN, ON THE
E.E.K., SIMILKAMEEN
1959.

Rae Spang

2005

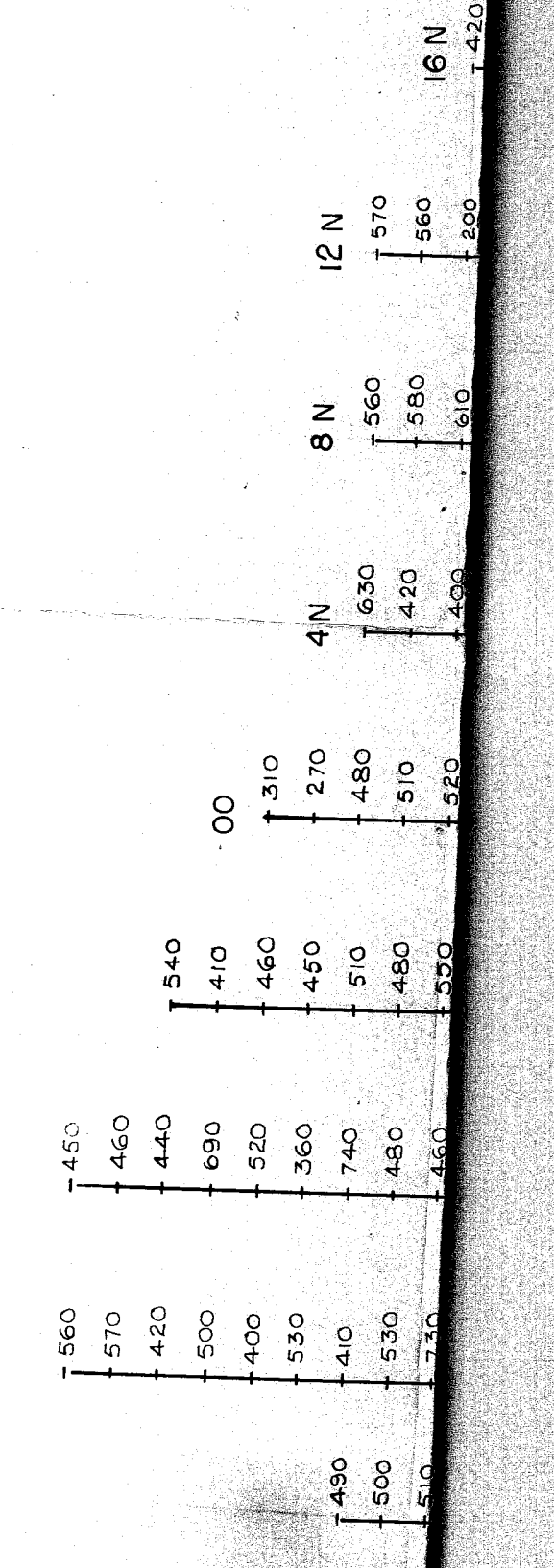
Department of
Mines and Petroleum Resources
ASSESSMENT REPORT
NO. 2005, MAP #2

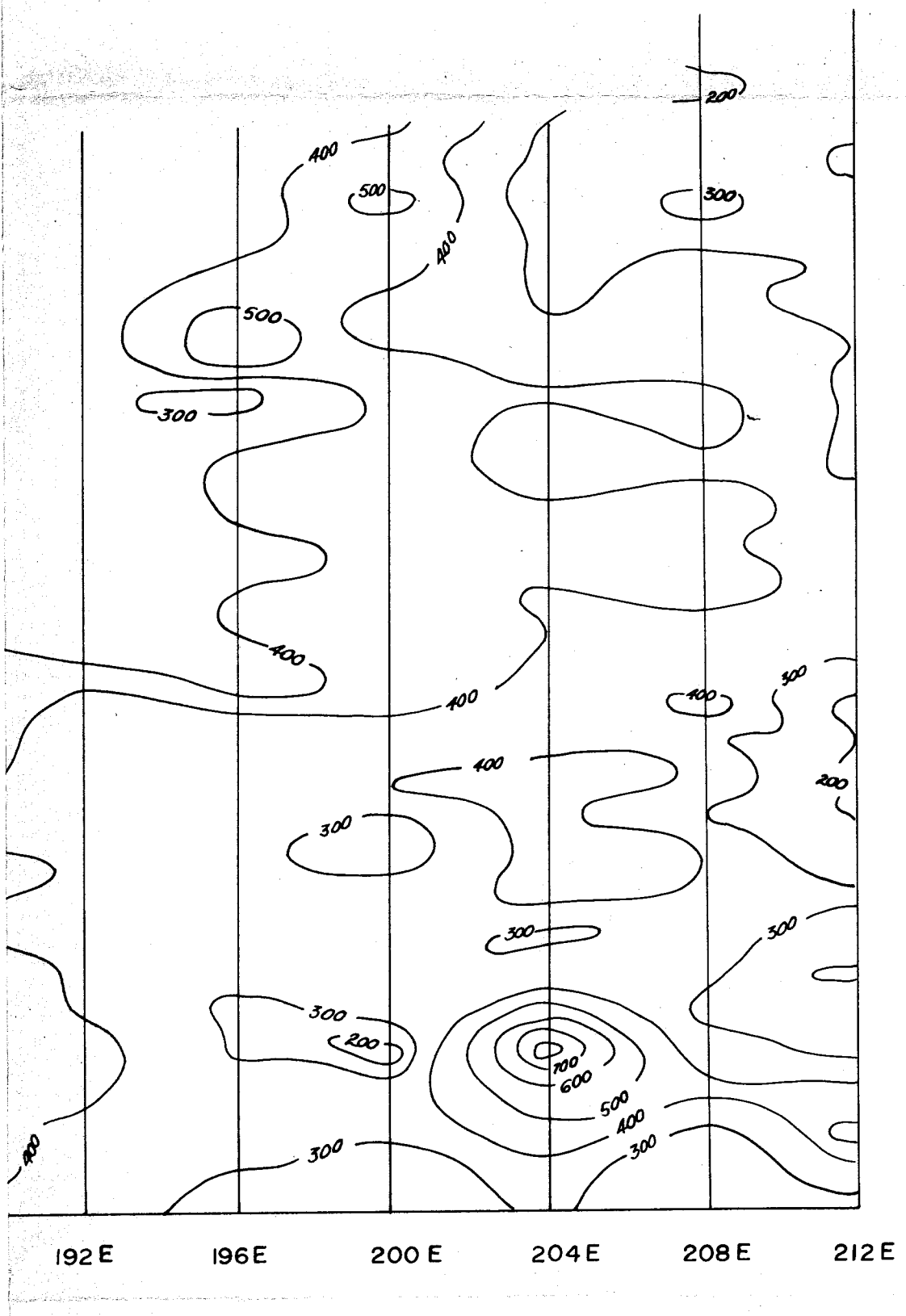
| | |
|-----------------------------------------------------------------------|-----------------------|
| QUALITY EXPLORATION CORPORATION | |
| SPA MINES PROJECT | |
| MAGNETOMETER SURVEY OVERLAY | |
| ALBAE ENGINEERING LTD. GEOLOGISTS AND ENGINEERS VANCOUVER, B.C. | |
| DESIGNED: _____ | SCALE: HOR. 1" = 400' |
| DRAWN: R.G.J. | VERT. _____ |
| CHECKED: _____ | DWG. No. 5500 - 10 |
| DATE: JULY 1969 | SHEET NO. - 2 A |



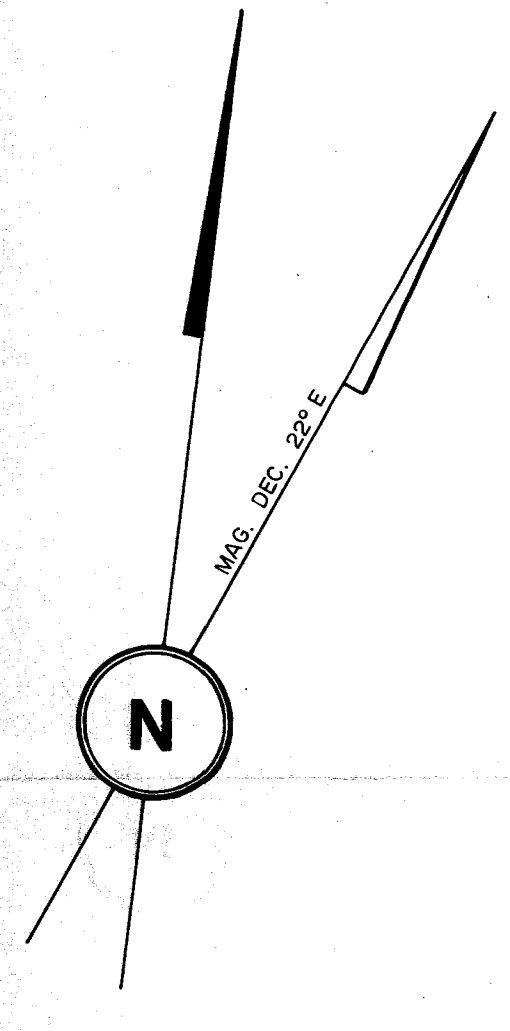
NOTE TO ACCOMPANY GEOPHYSICAL REPORT BY R. G. JURY P. Eng., ON THE
 SPA MINES LTD. CLAIMS, SIWASH CREEK, SIMILKAMEEN
 MINING DIVISION, DATED SEPT. 12, 1968.

R. G. Jury

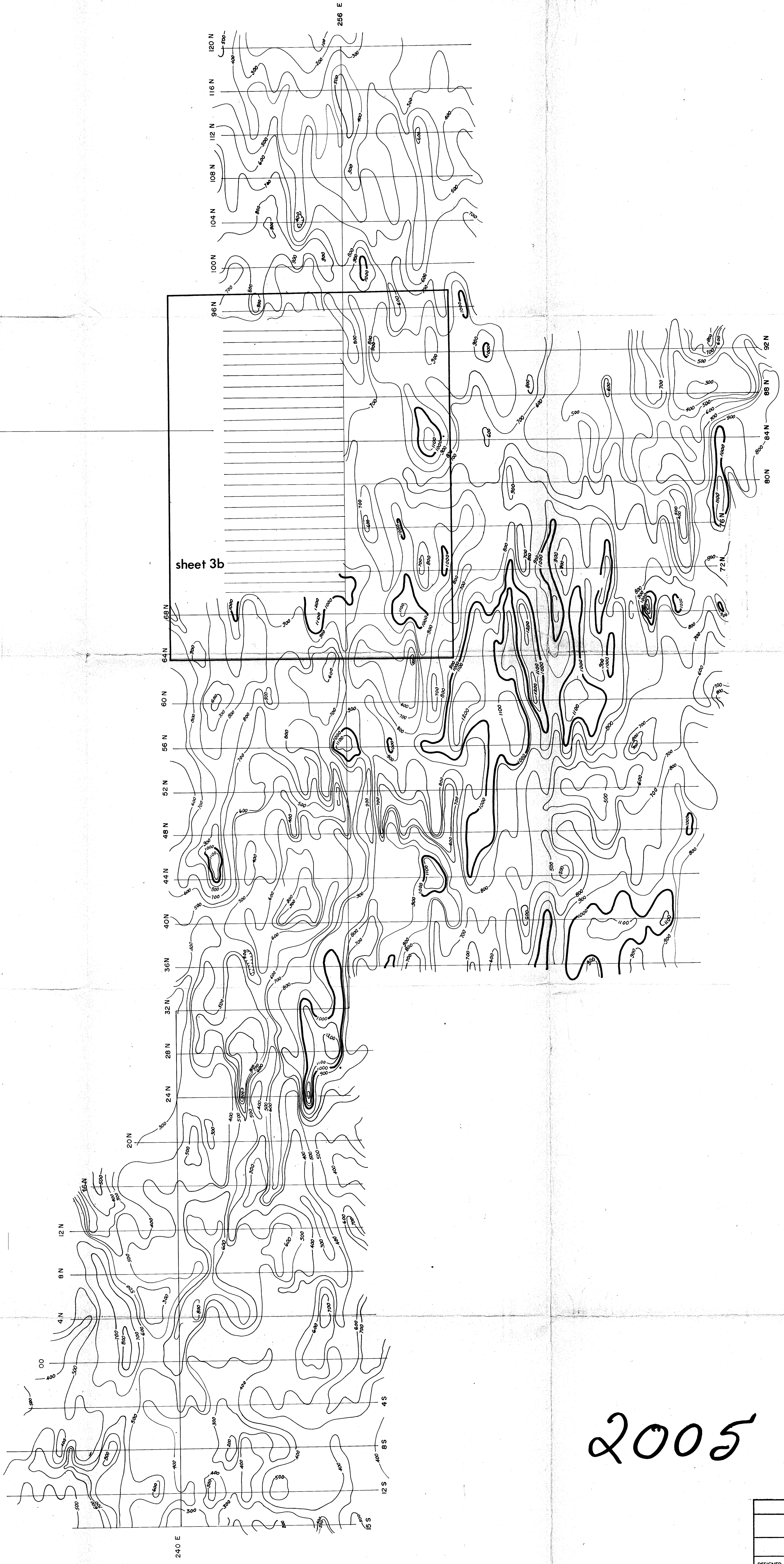




BASE LINE 160N



BL 85 N



F: CONTOURS SHOWN = -500 TO 0 AT 500 GAMMA INTERVALS
 0 TO 1000 = 100
 1000 TO 1500 = 500 "

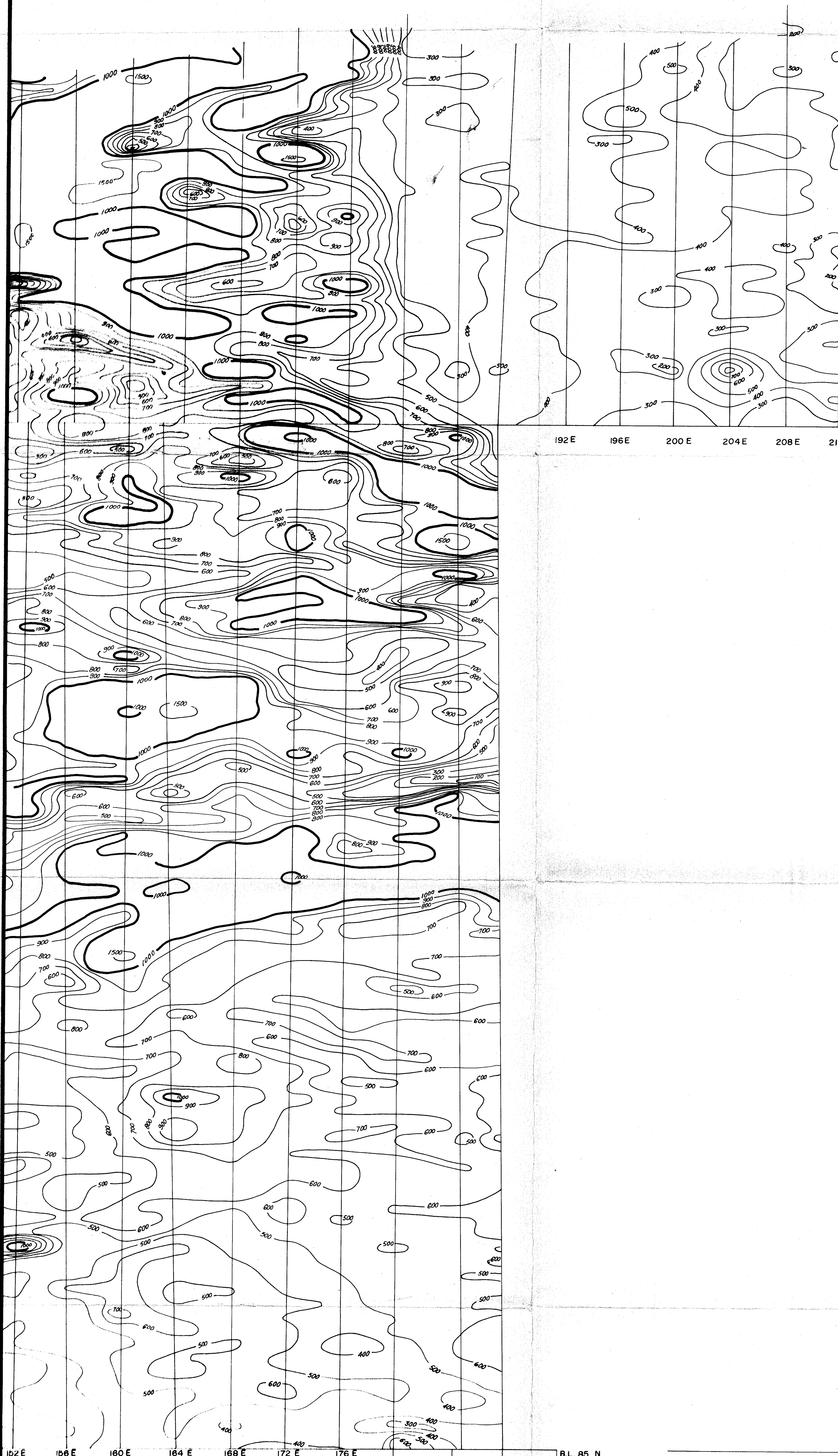
E: TO ACCOMPANY GEOPHYSICAL REPORT BY R.G. JURY R.F. 89,
 ON THE SPA MINES LTD. CLAIMS, SWASH CREEK, SIMILKAMEEN
 MINING DIVISION, DATED SEPT. 12, 1969.

R.G. Jury

2005

Department of
 Mines and Petroleum Resources
 ASSESSMENT REPORT
 NO. 2005 MAP #3

| | |
|-----------------------------------------------------------------------|----------------------------|
| QUALITY EXPLORATION CORPORATION | |
| SPA MINES PROJECT | |
| MAGNETIC CONTOUR OVERLAY | |
| ALBAE ENGINEERING LTD. GEOLOGISTS AND ENGINEERS VANCOUVER, B.C. | |
| DESIGNED: E.R. | SCALE HOR. VERT. 1" = 400' |
| DRAWN: R.S.J. | VERT. 1" = 400' |
| CHECKED: R.S.J. | DWG. No. 5500-II |
| DATE: SEPT. 1969 | |



BASE LINE 160 N

192 E 196 E 200 E 204 E 208 E 212 E

152 E 156 E 160 E 164 E 168 E 172 E 176 E

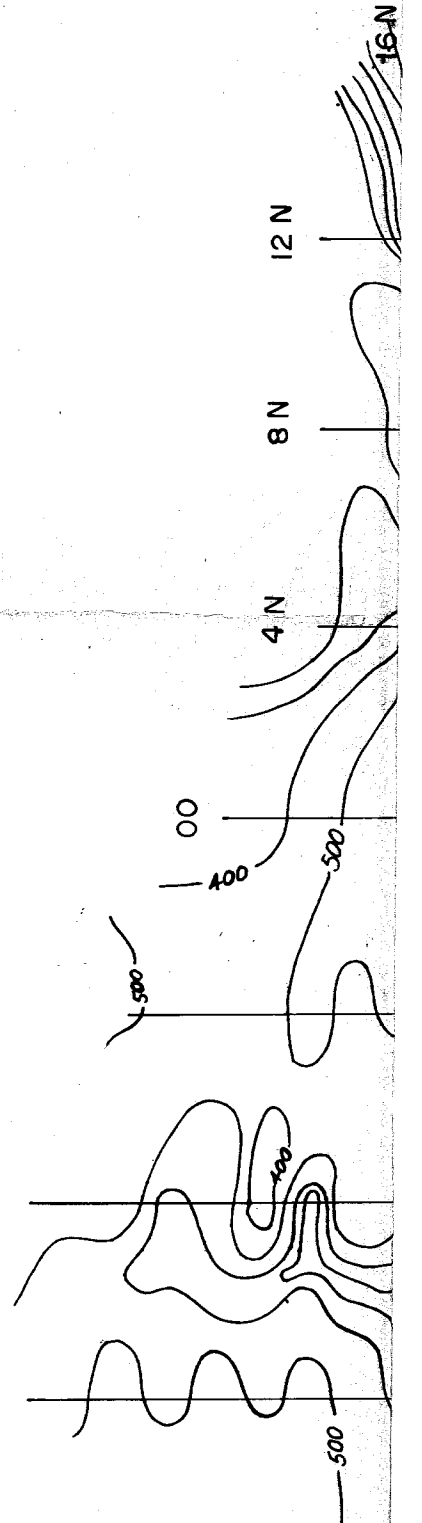
B.L. 85 N

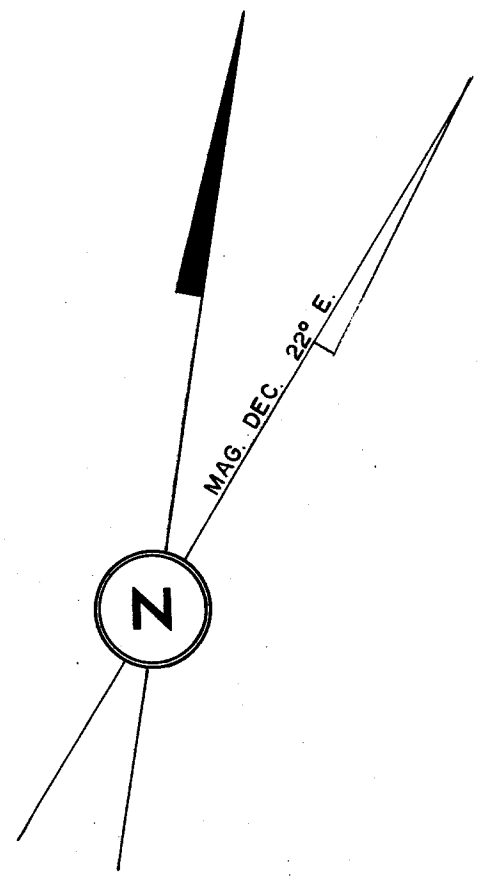
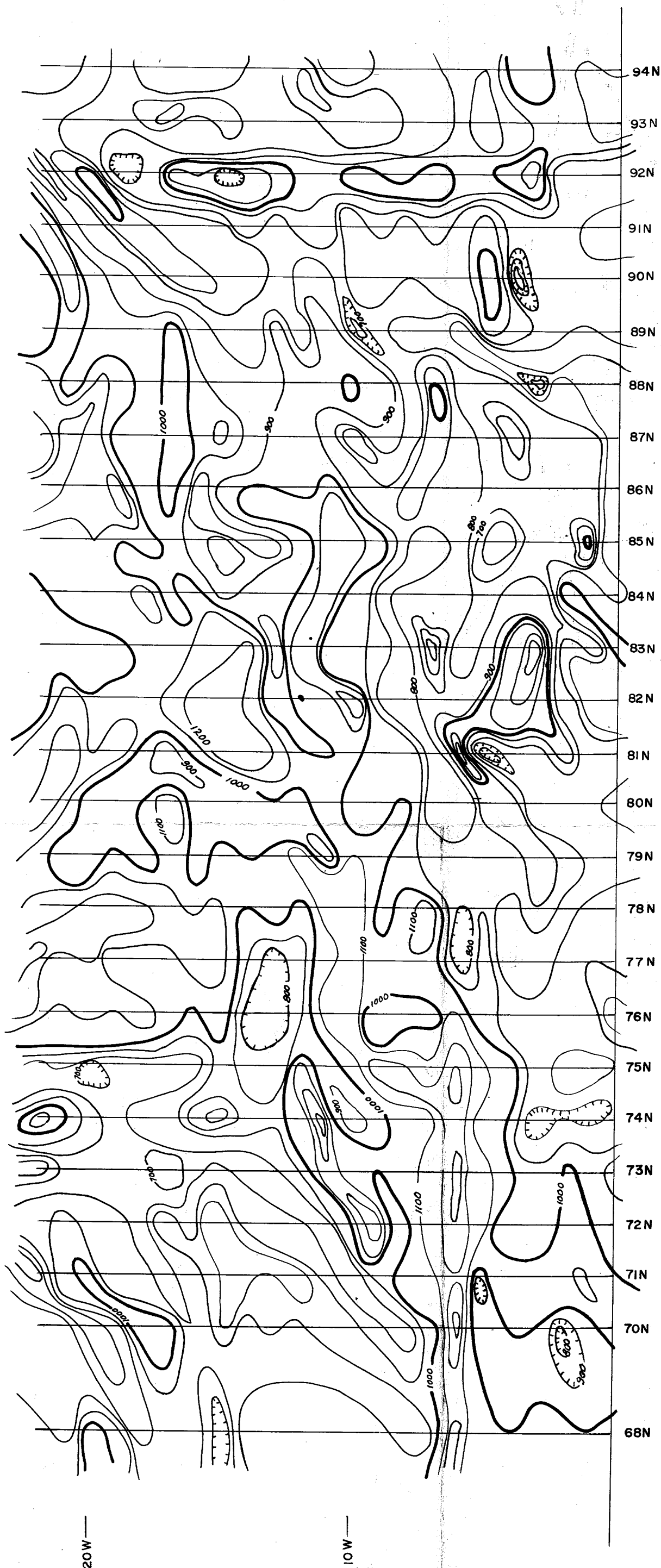
180 E 184 E 188 E

NOTE: CONTOURS SHOWN AT 500 GAMMA INTERVALS
 0 TO 1000 = 100 "
 1000 TO 12000 = 500 "

NOTE: TO ACCOMPANY GEOPHYSICAL REPORT BY R.G. JURY R.Fig.
 ON THE SPA MINES LTD. CLAIMS, SIWASH CREEK, SIMILKAMEEN
 MINING DIVISION. DATED SEPT. 12, 1969.

R.G. Jury





Department of
 Mines and Petroleum Resources
 ASSESSMENT REPORT
 NO. **2005** MAP # **6**

2005

| | |
|------------------------------------------------------------------------|-----------------------|
| QUALITY EXPLORATION CORPORATION | |
| SPA MINES PROJECT MAGNETOMETER CONTOUR OVERLAY MABEL ZONE | |
| ALRAE ENGINEERING LTD. GEOLOGISTS AND ENGINEERS VANCOUVER, B. C. | |
| DESIGNED G.H. | SCALE: HOR. 1" = 200' |
| DRAWN E.R. | VERT. |
| CHECKED R.G.J. | DWG. No. 5500 - 14 |
| DATE SEPT. 1969 | |
| SHEET 3b | |

NOTE: TO ACCOMPANY GEOPHYSICAL REPORT BY R.G. JURY P.Eng., ON THE SPA MINES LTD. CLAIMS, SIWASH CREEK, SIMILKAMEEN MINING DIVISION, DATED SEPT. 12, 1969.

Rae & Jury