

GEOLOGICAL, GEOPHYSICAL &
DIAMOND DRILLING
on the FUKI and DONEN GROUPS,

49°31' - 49°34' N and 118°50' - 118°53' W,

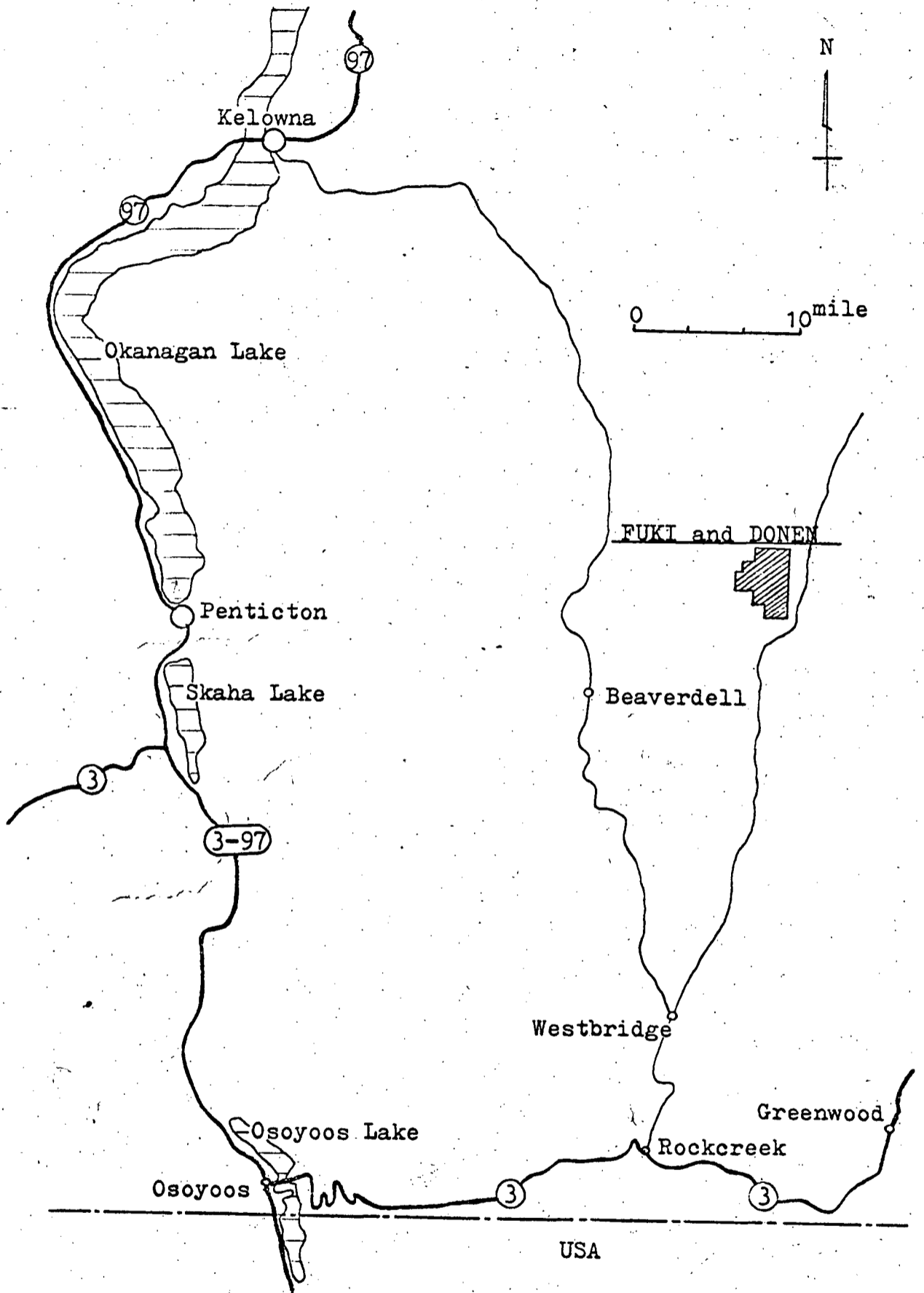
Greenwood Mining Dist., B.C.

82E10W



2013

Fig. 1 Location of FUKI & DONEN caim groups



*mapped and copied by
G. Dor on Aug. 2nd '69*

Department of Mines and Technical Surveys Agriculture and Forestry
NO. 2013 #1

G. Dor

Fig. 2 FUKI & DONEN claim groups

			F-28	F-27	F-40	F-39	D-15	D-16
			F-26	F-25	F-38	F-37	D-17	D-18
	F-10	F-9	F-24	F-23	F-36	F-35	D-19	D-20
	F-6	F-5	F-22	F-21	F-34	F-33	D-21	D-22
F-8	F-4	F-3	F-20	F-19	F-32	F-31	D-23	D-24
F-7	F-2	F-1	F-18	F-17	F-30	F-29	D-25	D-26
			F-16	F-15	D-1	D-2	D-27	D-28
			F-14	F-13	D-3	D-4	D-29	D-30
			F-12	F-11	D-5	D-6	D-31	D-32
					D-7	D-8	D-33	D-34
					D-9	D-10	D-35	D-36
					D-11	D-12	D-37	D-38
					D-13	D-14	D-39	D-40

Explanation

F-1 ; claim No. FUKI-1

D-1 ; claim No. DONEN-1

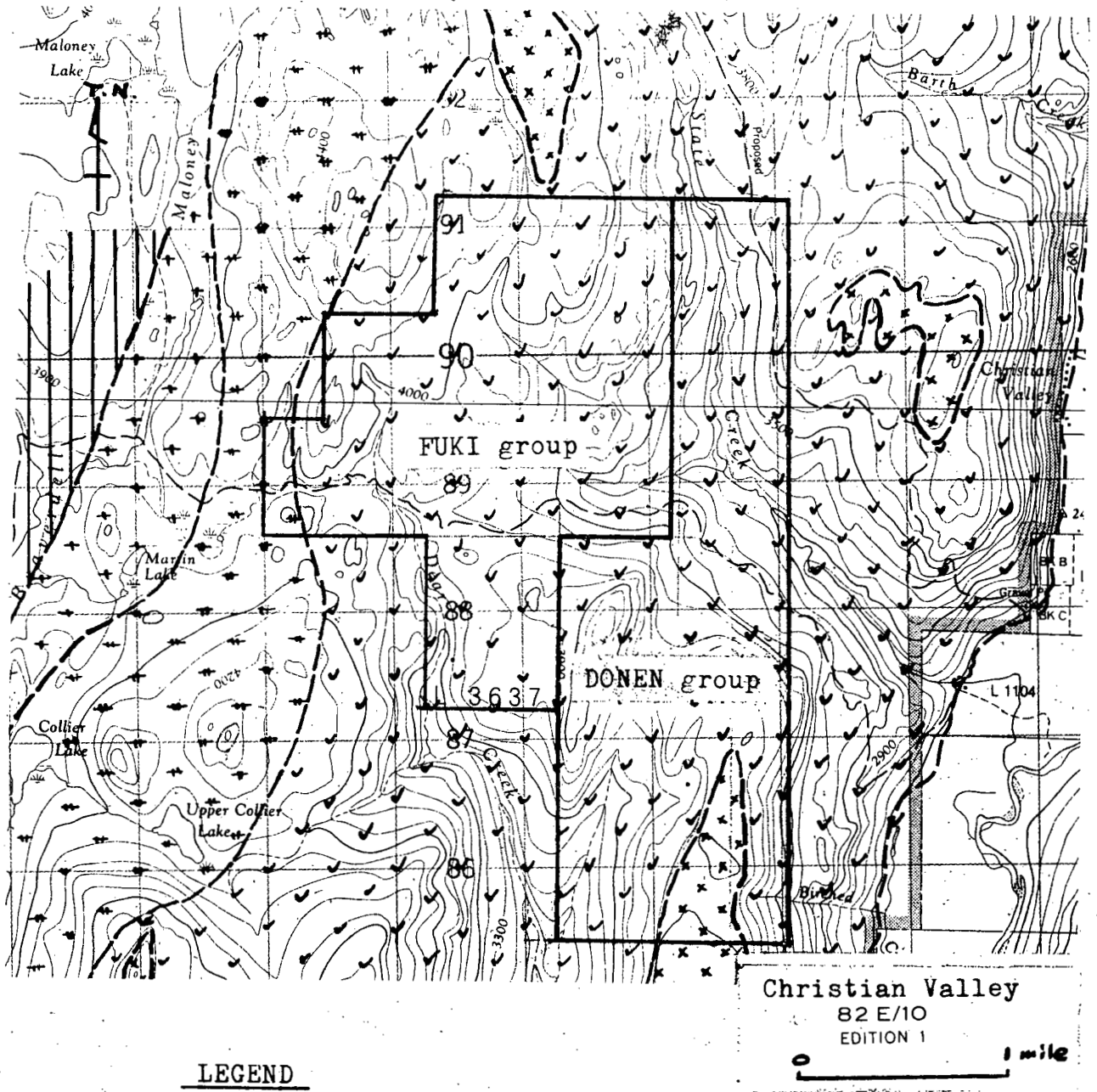
scale
 0 1,500 3,000 ft

Mapped and copied by
 G. Dor on Aug. 2nd 69

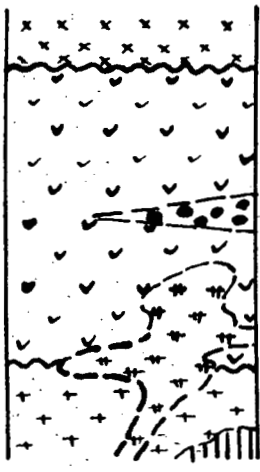
G. Dor

See Amended Fig. 3 in pocket.

Fig. 3 Geological Map of FUKI & DONEN area



LEGEND



- Basalt (miocene or more younger age)
- Phoenix volcanic group (paleocene or eocene)
(inter bedded sediments, conglomerate et al.)
- Coryell intrusions
- Valhalla, Nelson intrusions (jurrassic or cretaceous)
- Palaeozoic sediments

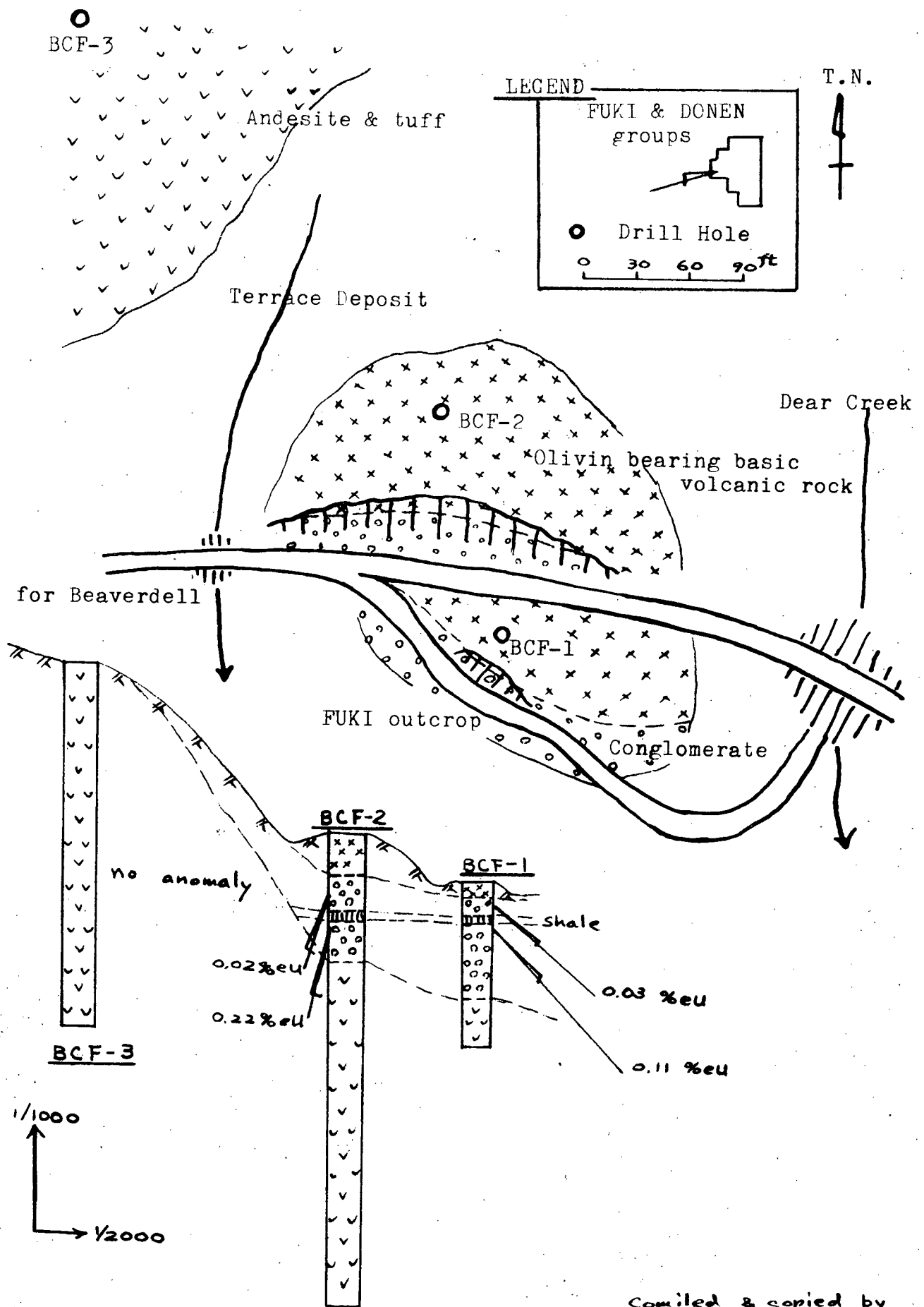
Mapped and copied by M. Sugimohara on August 2nd.

Department of
Mines and Petroleum Resources
ASSESSMENT REPORT
NO. **2013** MAP **#2**

b. for

Fig. 4 Geological Map of the Diamond Drilling Site

and Drill Core Log

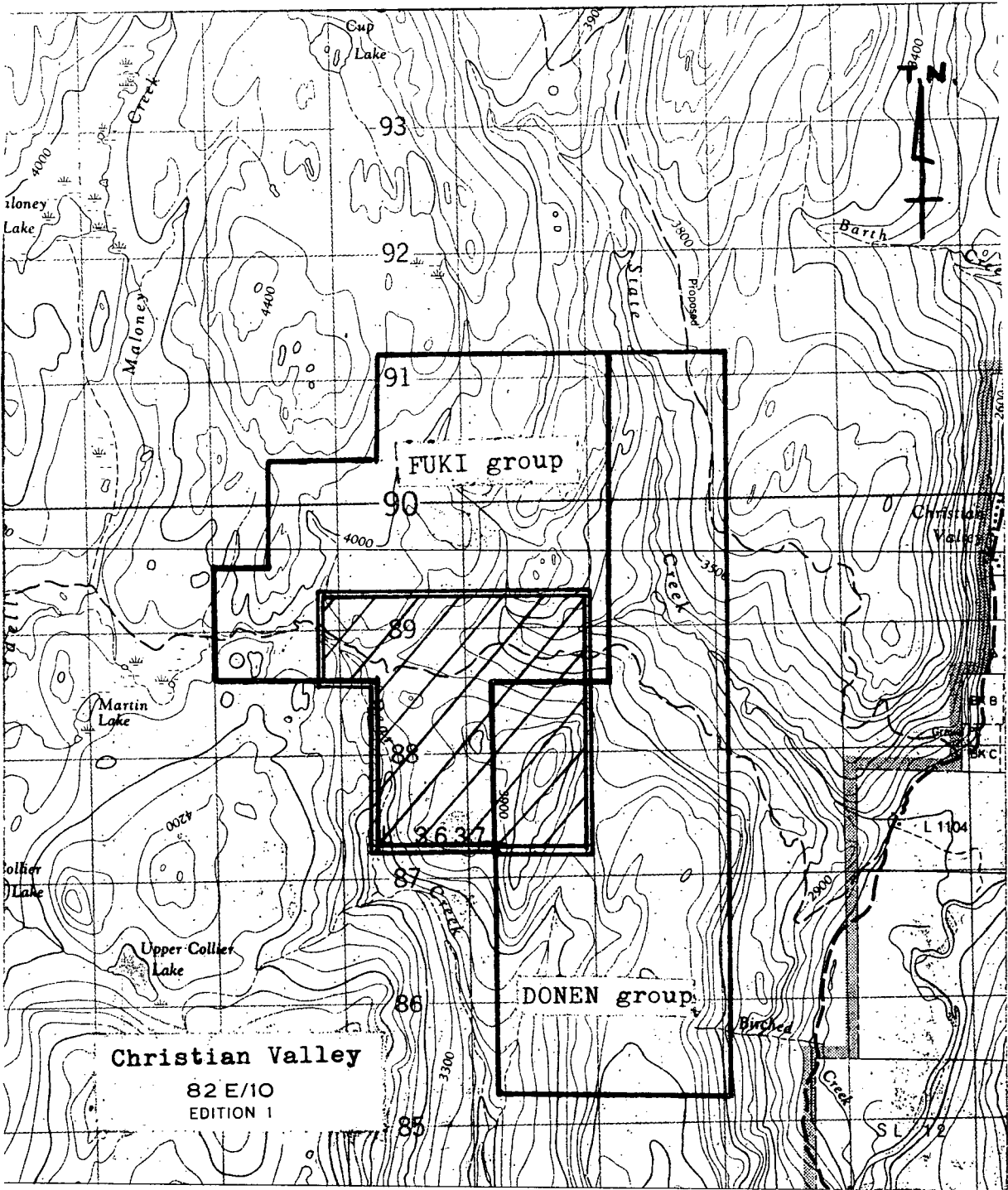


Compiled & copied by
K. doi on Aug. 2nd 69

Department of
Mineral Resources
Geological Survey
NO. **2013** # **3**

K. doi

Fig. 5 Recommended Exploration



LEGEND

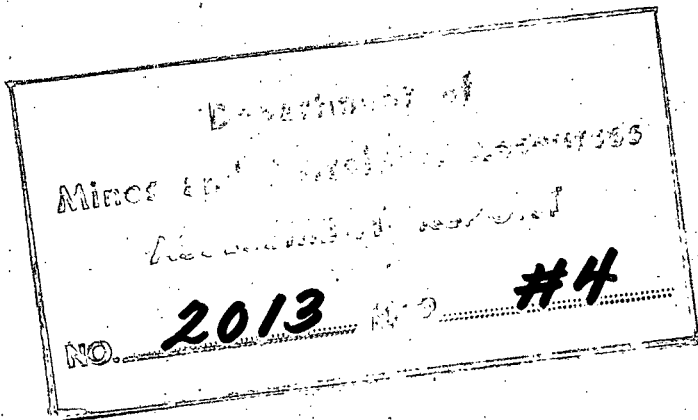


Recommended area for 20 holes of diamond drilling

Scale



Mapped and copied by E. Dor
on Aug. 2nd '69



E. Dor

GEOLOGICAL, GEOPHYSICAL AND DIAMOND DRILLING

on the FUKI and DONEN GROUPS,

49°31' - 49°34' N and 118°50' - 118°53' W,

Greenwood Mining Dist., B.C.

by Kazumi Doi, B.Sc., Geologist

Power Reactor and Nuclear Fuel Development Corporation,

Japan.

August 5, 1969.

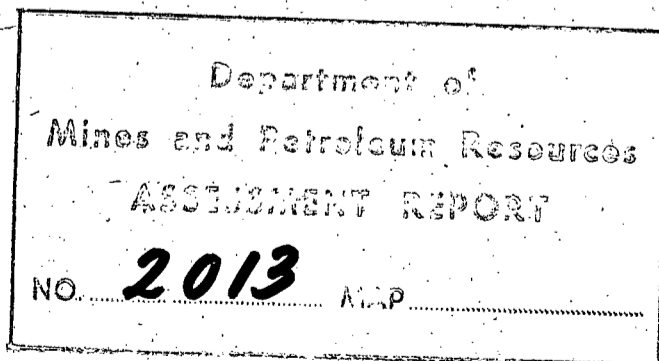
Vancouver, B. C.

Contents

- 1) General Statement
- 2) Geology
- 3) Mineralization
- 4) Work Done
- 5) Conclusion and Recommendation
- 6) Statement of Certificate
- 7) Statement of Expenses

Illustrations

- Fig. 1 Location of FUKI & DONEN claim groups
- Fig. 2 FUKI & DONEN claim groups
- Fig. 3 Geological Map of FUKI & DONEN groups area including Radiometric Survey readings.
- Fig. 4 Geological Map of the Diamond Drilling site and Drill Core Log
- Fig. 5 Recommended Exploration



Geological, Geophysical and Diamond Drilling on the FUKI & DONEN Groups, $49^{\circ}31'$ - $49^{\circ}34'$ N and $118^{\circ}50'$ - $118^{\circ}53'$ W, Greenwood Mining District, B.C.

1) General Statement

- a) The assessment work carried out in this report herein was completed during from June 1st to August 3rd, 1969 by a exploration team which was sent from the Power Reactor and Nuclear Fuel Development Corporation,* Japan. The member of that are as follows :

Kazumi Doi, B.Sc. (head of the team) ; geologist

Masaaki Suginojara, B.Sc. ; geologist

Hajime Ohta ; Drilling Engineer and Assistant Geologist

Yoshizo Tsukamoto ; Drilling Engineer and Assistant Geologist

with helper ;

James Colin ; No.403 Greenwood B.C.; Geological helper

- * The Corporation was established as a Japanese Government corporation on Oct.2nd,1967 and absorbed the Atomic Fuel corporation which was established in 1956. The corporation directed for development of newer type atomic reactor for power station and materials for nuclear fuel.

- b) There are two groups of mineral claims, FUKI and DONEN groups, all of which were staked by Isao Fukuoka (Japan), date mentioned in the table below, and had been transferred to Nissho-Iwai Canada Ltd (suit 1112, United Kingdom Bldg., 409 Granville St., Vancouver 2, B.C.) on the date of June 14, 1969

Table of the claims

FUKI group

Name of claim	Record No.	Staked date
FUKI- 1	369310	Aug. 6, 1968
FUKI- 2	369311	Aug. 6, 1968
FUKI- 3	369312	Aug. 6, 1968
FUKI- 4	369313	Aug. 6, 1968
FUKI- 5	369314	Aug. 9, 1968
FUKI- 6	369315	Aug. 9, 1968
FUKI- 7	369316	Aug. 9, 1968
FUKI- 8	369317	Aug. 8, 1968
FUKI- 9	369318	Aug. 9, 1968
FUKI-10	369319	Aug. 9, 1968
FUKI-11	369320	Aug. 11, 1968
FUKI-12	369321	Aug. 11, 1968
FUKI-13	369322	Aug. 11, 1968
FUKI-14	369323	Aug. 11, 1968
FUKI-15	369324	Aug. 11, 1968
FUKI-16	369325	Aug. 11, 1968
FUKI-17	369326	Aug. 10, 1968
FUKI-18	369327	Aug. 10, 1968
FUKI-19	369328	Aug. 10, 1968
FUKI-20	369329	Aug. 10, 1968
FUKI-21	369330	Aug. 10, 1968
FUKI-22	369331	Aug. 10, 1968
FUKI-23	369332	Aug. 12, 1968
FUKI-24	369333	Aug. 12, 1968
FUKI-25	369334	Aug. 12, 1968
FUKI-26	369335	Aug. 12, 1968
FUKI-27	369336	Aug. 12, 1968
FUKI-28	369337	Aug. 12, 1968
FUKI-29	369514	Sept. 5, 1968
FUKI-30	369515	Sept. 5, 1968
FUKI-31	369516	Sept. 6, 1968
FUKI-32	369517	Sept. 6, 1968
FUKI-33	369518	Sept. 6, 1968
FUKI-34	369519	Sept. 6, 1968
FUKI-35	369520	Sept. 7, 1968
FUKI-36	369521	Sept. 7, 1968
FUKI-37	369522	Sept. 7, 1968
FUKI-38	369523	Sept. 7, 1968
FUKI-39	369524	Sept. 8, 1968
FUKI-40	369525	Sept. 8, 1968

Table of the claims (2)

DONEN group

Name of claim	Record No.	Staked date
DONEN- 1	369526	Sept. 5, 1968
DONEN- 2	369527	Sept. 5, 1968
DONEN- 3	369528	Sept. 9, 1968
DONEN- 4	369529	Sept. 9, 1968
DONEN- 5	369530	Sept. 9, 1968
DONEN- 6	369531	Sept. 9, 1968
DONEN- 7	369532	Sept. 10, 1968
DONEN- 8	369533	Sept. 10, 1968
DONEN- 9	369534	Sept. 10, 1968
DONEN-10	369535	Sept. 10, 1968
DONEN-11	369536	Sept. 11, 1968
DONEN-12	369537	Sept. 11, 1968
DONEN-13	369538	Sept. 11, 1968
DONEN-14	369539	Sept. 11, 1968
DONEN-15	369540	Sept. 10, 1968
DONEN-16	369541	Sept. 10, 1968
DONEN-17	369542	Sept. 10, 1968
DONEN-18	369543	Sept. 10, 1968
DONEN-19	369544	Sept. 10, 1968
DONEN-20	369545	Sept. 10, 1968
DONEN-21	369546	Sept. 9, 1968
DONEN-22	369547	Sept. 9, 1968
DONEN-23	369548	Sept. 9, 1968
DONEN-24	369549	Sept. 9, 1968
DONEN-25	369550	Sept. 5, 1968
DONEN-26	369551	Sept. 5, 1968
DONEN-27	369552	Sept. 7, 1968
DONEN-28	369553	Sept. 7, 1968
DONEN-29	369554	Sept. 7, 1968
DONEN-30	369555	Sept. 7, 1968
DONEN-31	369556	Sept. 7, 1968
DONEN-32	369557	Sept. 7, 1968
DONEN-33	369558	Sept. 8, 1968
DONEN-34	369559	Sept. 8, 1968
DONEN-35	369560	Sept. 8, 1968
DONEN-36	369561	Sept. 8, 1968
DONEN-37	369562	Sept. 8, 1968
DONEN-38	369563	Sept. 8, 1968
DONEN-39	369564	Sept. 8, 1968
DONEN-40	369565	Sept. 8, 1968

c) The claims of FUKI and DONEN groups are at approximately 33 air-miles east from Penticton and 33 air-miles north from Rock Creek on the highway No.3. Approximately 48 road miles from Rock Creek by a partially paved road.

2) Geology

As the oldest rock of the area, Nelson and Valhalla intrusions occur in the east and west side of this area. Both of them are granodiorite and related rocks. The age of Nelson and Valhalla intrusions are between latest Jurassic and middle Cretaceous.

The Kettle River formation, consisting of acidic tuff, conglomerate and sandstone, overlies unconformably the Valhalla and Nelson intrusions.

The Phoenix volcanic group overlies the Kettle River formation, but in most places it lies directly upon the Valhalla and Nelson intrusions. Kettle River formation and Phoenix volcanic group are estimated as Paleocene or eocene age.

In the western part of this area, Coryell intrusions, consisting of reddish syenite and granite, intruded to Valhalla, Nelson intrusions and the andesite of Phoenix volcanic group.

In the northeastern and southeastern part of this area, flat lying flows of basalt, commonly with columnar and platy joint, overlies all the older formations. The basalt is estimated as miocene or more younger age.

Glacial sediments are observed on the higher peaks; consist of well rounded cobble or pebble of gneiss and other hard rocks.

3) Mineralization

The uranium mineralization of this area was discovered at FUKI outcrop in the claim No. 1 in August of 1968 by Mr. Fukuoka and Mr. Kuroki of the Power Reactor and Nuclear Fuel Development Corporation of Japan.

The FUKI outcrop is on the gravel road from Christian Valley to Beaverdell, and the mineralization is recognized in the cliff of 18 feet width and 6 feet high. The uranium mineralization develops in the conglomerate of Phoenix volcanic group and have been recognized at two different beds. One is at the most upper part of conglomerate and another is at just below of interbedded tuffaceous shale in the conglomerate. At the outcrop secondary uranium bearing mineral (mainly autunite) are observed in the matrix and at the surface of the pebble. The mineralization extends nearly horizontally along strata of the conglomerate.

The vertical diamond drill holes cuts those two uranium bearing beds as shown Fig 4. From them, it has been known that the mineralized beds have approximate 5 - 7 feet thickness and 0.1 - 0.22 % eU (estimated by radio-active logging).

The conglomerate, recognized mineralization is about 60 feet thick with thin tuffaceous shale and overlies upon the biotite bearing andesite and be covered by fine grained olivin bearing basic volcanic rock. By the result of above and geological survey in surrounding area, the conglomerate is supposed to be correlated with the Phoenix volcanic group after the geological map "Kettle River (east half)" 1957 by Dr. Little of Geological Survey of Canada.

The three diamond drill holes indicate that the conglomerate is spreaded several hundred feet wide, and it means some hundred thousand tons of ore will be able to estimated on the site.

The genesis of the uranium deposit has not yet been decided correctly, but the writer assume it should be due to the circulation of under ground water in the tertiary sediments.

4) Work Done

The following exploration work had been done from June 1st to August 3rd. 1969.

a) Geological and Radiometric Survey

Geological and radiometric survey done on the area of FUKI and DONEN groups and surroundings are as follows:

The geological team, consist of two or one geologist and helpers, walked chiefly along location line of the claims for the geological mapping, and at the same time radiometric survey was done by the team with a scintillation survey meter type TCS-122B, made by Nippon Musen K.K. in Japan.

The diamond drill site was decided by the geologist of the team.

The core of drilling was checked and recorded by the geological team every two or three days at the drill site.

b) Diamond Drilling

The diamond drilling was done by two Japanese drilling engineers, with a Longyear's 24 drill with AX (partially EX) size core tube.

The radiometric logging was done with TCS-603R G-M and scintillation logging meter, made by Nippon Musen K.K. in Japan, with Anton G-M tube, made by Anton Electric Laboratories. INC. in USA.

BCF-1 hole; 108 feet depth, vertical
from June 1 to June 24 operated

BCF-2 hole; 273 feet depth, vertical
from June 25 to July 19 operated

BCF-3 hole; 240 feet depth, vertical
from July 20 to Aug. 3 operated

Log data of the holes will be seen in Fig. 4

5) Conclusion and Recommendation

A uranium bearing deposit has been found by the work explained in this report.

At present, there has been insufficient work done on the property to determine its full potential except some result explained in the main body. However the writer is sure that with a next stage exploration program, a more detailed picture can be obtained.

The following program of exploration should be carried out; (see Fig.5)

20 holes of diamond drilling; total depth 6,000 feet

Operation times; 3 months

Expenses; (@\$12.- x 6,000 feet) \$ 72,000.-

A detail is now being studied by the corporation.

STATEMENT OF QUALIFICATIONS

I, Toru Kikuchi of the City of Vancouver, B.C., hereby certify that:-

1. I am a graduate of the Hokkaido University, Japan (B.Sc., Geology and Mineralogy, 1946) and of the Tohoku University, Japan (Ph.D., Economic Geology, 1963).
2. I am a "GIJUTSUSHI" (a qualification for a consulting engineer authorized by the Japanese Government) and a member in good standing of the Association of Professional Engineers of the Province of British Columbia and of the Yukon Territory.
3. I am a member of The Society of Mining Geologists of Japan, and of the Canadian Institute of Mining and Metallurgy and of the Engineering Institute of Canada.
4. I have been practising my profession continuously for the past twenty-three years, and am an independent Consulting Geological Engineer with my office at Room 702 - 402 West Pender Street, Vancouver 3, B.C.
5. I have no direct or indirect interest in the property, Fuki and Donen Groups, nor do I anticipate receiving any such interest.


Toru Kikuchi, P. Eng.

Vancouver, B.C.

October 15th, 1969.

6) Statement of Certificate

I, Kazumi Doi, residing at c/o Nissho-Iwai Canada Ltd.,
Suit 1112, United Kingdom Bldg., 409 Granville St. Vancouver 2,
B.C. beside at No.19-10, Minami-dai 3 chome, Nakano-ku Tokyo,
Japan, oath hereby that: I

- 1) am a graduate of Tokyo University of Education and majored
in the Economic Geology at the Geological and Mineralogical
department of the university.
- 2) am a well standing member of the society of Mining Geologist
of Japan, the Japanese Association of Mineralogists, Petro-
logists and Economic Geologists, and the Atomic Energy Society
of Japan.
- 3) have been employed as follows;
 - a) In 1953 entered the Gadelius & Co.Ltd.(Swedish trading
company in Japan) and engaged in the importation of the
Craelius Diamond Drilling equipment, especially the inst-
ruction of the drill related.
 - b) In 1957, entered the Japan Atomic Fuel Corporation and
engaged in the prospecting and geological and mineralo-
gical survey at Ningyotoge, Okayama Pref.(1957-1958),
Oguni, Yamagata Pref.(1960-1962) and Tono, Gifu Pref.
(1963-1966).
 - c) Since 1967, have been working for Power Reactor and
Nuclear Fuel Development Corporation, that absorbed
A.F.C. as geologist.

August 3rd 1969

Kazumi Doi

7) Statement of Expences

a) Personal

Teiji Kamiyama, Ph.Dr. (Director of the Corp.)		
Geologist	@\$ 50.- x 2 days	\$ 100.-
Kazuhisa Nozawa, B.Sc. (Chief of overseas section)		
Geologist	@\$ 30.- x 2 days	\$ 60.-
Kazumi Doi, B.Sc. (head of the team) Geologist		
	@\$ 27.- x 64 days	\$1,728.-
Masaaki Suginozawa, B.Sc., Geologist		
	@\$ 25.- x 64 days	\$1,600.-
Hajime Ohta, Drilling Engineer and Assistant		
geologist	@\$ 26.- x 64 days	\$1,664.-
Yoshizo Tsukamoto, Drilling Engineer and		
Assistant geologist	@\$ 26.- x 64 days	\$1,664.-
	total	\$6,816.-
(No receipts, because all paid in Japan)		
James Colin, Geological helper		\$ 858.83
Pension plan for above(employer's)		\$ 13.66
(Receipt No.1)		
	Total	\$7,688.49

b) Consaltant fee

Toru Kikuchi, Ph.Dr., P.Eng. (Receipt No.2) \$ 250.-

c) Camp accomodation

Hotel charge	\$1,560.- (Receipt No.3)
Meals	\$1,255.- (Receipt No.4)
Food etc	\$ 248.10 (Receipt No.5)
	Total \$3,063.10

d) Car rental

Rental fee for 3 trucks	\$3,429.93 (Receipt No.6,7&8)
Repair for 3 trucks and gasolin for 2 trucks	
(11)	\$ 931.04 (Receipt No.9&10)

Declared before me at the City
of Vancouver, in the
Province of British Columbia, this 6
day of August 1969, A.D.

K. Doi

Total \$4,360.97

E) Diamond drilling expenses

@\$5.-* x 621 feet \$3,105.-

* Approximate total of depreciation of drilling machine, radioactive logging meter and others plus all expenditure of articles of consumption which have been carried from Japan. See attached documents No.1 to No.3.

Grand Total Ca\$18,467.56

The expenditure of diamond drilling may not be allowed for DONEN group, because drilling has been done in the FUKI group only. Approximate total of diamond drilling as follows.

30% of (a) \$2,306.55
 30% of (c) \$ 918.93
 30% of (d) \$1,308.29
 100% of (e) \$3,105.-
 Total \$7,638.77

The expenditure of geological survey is

$$\$18,467.56 - 7,638.77 = 10,828.79$$

above total is for the area of Fig.3, Approximate expenditure of geological survey for the claims area is \$9,745.91 (90%)

Therefor the expenditure for FUKI & DONEN are

	Geological	Diamond Drilling	Total
FUKI	\$4,872.95	\$7,638.77	\$12,511.72
DONEN	\$4,872.95	-	\$4,872.95
Total	\$9,745.90	\$7,638.77	\$17,384.67

DECLARED before me at the City of Grand Forks, in the Province of British Columbia, this 16th day of October, 1969.

} *[Signature]*
)
)
)

[Signature]

Total \$4,360.97

e) Diamond drilling expenses

@ \$ 5.- * x 621 feet \$3,105.-

* Approximate total of depreciation of drilling machine, radioactive logging meter and others plus all expenditure of articles of consumption which have been carried from Japan. See attached documents No.1 - No.3

Grand total Ca\$18,467.56

The expenditure of diamond drilling may not be allowed for DONEN group, because drilling has been done in the FUKI group only. Approximate total of diamond drilling is as follows.

30% of (a)	\$2,306.55
30% of (c)	\$ 918.93
30% of (d)	\$1,308.29
100% of (e)	\$3,105.-
Total	\$7,638.77

Therefor the expenditure for FUKI and DONEN are

	Geological	Diamond Drilling	Total
FUKI	\$5,414.40	\$7,638.77	\$13,053.17
DONEN	\$5,414.39	-	\$ 5,414.39
Total	\$10,828.79	\$7,638.77	\$18,467.56

Amended see attached

(12)

Declared before me at the City
of Vancouver, in the
Province of British Columbia, this 6
day of August 1969, A.D.

K. J. J.

Joan Sinner
A Commissioner of the Court of the Province of British Columbia
Notary Public

SUB-MINING RECORDER

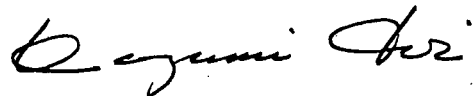
POWER REACTOR AND NUCLEAR FUEL DEVELOPMENT CORPORATION

9-13, 1-Chome, Akasaka, Minato-ku, Tokyo, Japan

Reference :

Amendment for the report by the letter from mining recorder of Grand Forks are as follows.

- 1) In page 12, expenditure of geological survey were cut down 10% for the expenses of surrounding area of FUKI & DONEN.
- 2) In Fig.3, outcrops and radiometric surveyed line were illustrated in the map.



Kazumi Doi

Geologist of
Power Reactor and
Nuclear Fuel
Development Corp.

K. Dai &
M. SUGINDHARA

JAMES COLIN

Receipt No. 1.

TIME STATEMENT

Period JUNE 11 - 30 1969

117 Hours at 280	32670	Deductions		
Hours at		Pension Plan	498 x 2	996
		Unemp. Insurance	440 x 2	880
		Dom. Income Tax	4495	4495
		Advance	15380	6371
		Insurance		
		Medical Aid		
		Total Deductions	20813	
Gross	32670			
Date Paid <u>JULY 3</u> 19 <u>69</u>		Cheque No.		NET <u>11857</u>

44220

K. Dai &
M. SUGINDHARA

JAMES COLIN

TIME STATEMENT

Period JULY 1969

147 1/2 Hours at 280	41300	Deductions		
20 1/2 Hours at 420	8610	Pension Plan	868	5 x 280
Holiday pay		Unemp. Insurance	700	
326.70		Dom. Income Tax	10030	
499.10		Advance	20000	
825.80		Insurance		
@ 4%	3303	Medical Aid		
Gross	53213	Total Deductions	31591	
Date Paid <u>JULY 31</u> 19 <u>69</u>		Cheque No.	<u>James Colin</u>	NET <u>21615</u>

Recd. By:

Receipt No.

No. _____

RECEIVED FROM Mr. K. Doi July 18 1969

(C) \$250^{xx}

The Sum of Two Hundred & Fifty Dollars

for Professional Services

Tom Kibuch

RECEIVED FROM (P)

SWISS INN & MOTEL

Receipt No. 4

The ZIMMERMANS

ROCK CREEK, B.C.

Meal May 30		
6 Aug 3		1255 ⁰⁰
200		

SWISS INN & MOTEL

PHONE 446-2234

ROCK CREEK, B.C.

Receipt No. 3

DATE May 30 - Aug 3
RECEIVED FROM Mr. Davis
RENTAL UNIT NO. 4, 5, 6, 7,
FOR May 30 - Aug 3 DAYS AT \$
\$1560.00 N.C. Osterman
THANK YOU

Receipt No. 5

GROCERIES
FRESH MEATS
FLOUR AND FEED

C. G. McMynn Ltd.

HARDWARE
DRY GOODS
MEN'S FURNISHINGS

AGENTS FOR:

Goodyear Tires, Marshall Wells Paints, C.C.M. Bicycles, Hoover Vacuum Cleaners,
International Trucks and Farm Implements, Columbia Trailers, Auto Insurance,
Fire Insurance, Gas and Electric Washing Machines, Electric Refrigerators.
We Buy and Sell Farm Produce

Phone No. 449-2242

M I D W A Y , B. C.

May 30, 1969 Fri.	\$25.30
June 6, 1969	18.00
June 13, 1969	20.50
June 20, 1969	23.00
June 27, 1969	35.00
July 6, 1969	33.20
July 11, 1969	45.00
July 18, 1969	28.30
July 25, 1969	19.80

TOTAL	\$248.10
-------	----------

Purchases included:

Rice, meat, eggs, canned food, fruits,
detergent, toilet soap, laundry soap, toilet tissues.

TILDEN

THE ONLY CANADIAN NAME IN WORLD-WIDE CAR RENTALS
RENT-A-CAR SEAV
 453 LANSDOWNE STREET
 KANLOOPS B C

20 CUSTOMER - LOCATAIRE

~~KAR KITAGAWA~~
KAZUMI DOI
 Power Reactor Fuel Development
 CORP.

20 HEREBY RENTS TO UNDERSIGNED - PAR LA PRESENTE LOUE AU SOUSSIGNE

2 VEHICLE NO. VEHICULE	3 LIC. NO. C 30-153	4 MAKE - MARQUE Hond	25 DATE & TIME IN DATE & HEURE RETOUR
6 OWNER STATION - LOCATEUR RAM	7 TO BE CHECKED IN AT - ARRIVERA A RAM	8 WILL RETURN BY - RETOURNERA LE JULY 31/69	26 DATE & TIME OUT DATE & HEURE DEPART MAY 16/69 1:4
9 CREDIT CARD - CARTE DE CREDIT NO.	10 DESTINATION Grand Falls	11 DRIVER'S LIC. NO. CONDUCTEUR 242743	12 PROV. EXP. BC
49 ALTERNATE CAR - AUTRE VOITURE		21 IN BY RETOUR PAR	27 MILES IN MILLES RETOUR 18527
MILES IN MILLES RETOUR		22 OUT BY DEPART PAR	28 MILES OUT MILLES DEPART 10549
MILES OUT MILLES DEPART		23 TRAVEL AGENT DE VOYAGE	29 MILES MILLES @ 124900 A/C
MILES DRIVEN MILLES CONDUITS		24 INTERCITY FEE TAUX INTERCITE	30 SUB-TOTAL SOUS-TOTAL
14 REMARKS - REMARQUES \$400.- month (with empty); no mileage charge.		31 HRS HEURES	32 DAYS JOURS 19 @ 13.32 253.27
15 IN CONSIDERATION OF THE PAYMENT OF EN CONSIDERATION DU PAIEMENT DE \$ nil PER DAY PAR JOUR EXCESS WEAR AND TEAR IF VEHICLE DRIVEN OFF PAVED HIGHWAY. 1000		33 WKS. SEM. 2 @ 400.00 800.00	34 TOTAL TIME & MILEAGE TOTAL TEMPS & MILLAGE 1053.27
CUSTOMER'S LIABILITY FOR DAMAGE TO RENTED VEHICLE IS LIMITED TO: LA RESPONSABILITE DU LOCATAIRE POUR TOUS DOMMAGES CAUSES AU VEHICULE LOUE EST LIMITEE A: \$ 1000		35	36
PROVIDED ALL TERMS OF THE RENTAL AGREEMENT ARE COMPLIED WITH POURVU QUE TOUTES LES CONDITIONS DU PRESENT CONTRAT SOIENT REMPLIES DU LOCATAIRE X		37 TOTAL TAXABLE CHARGES TOTAL COUT IMPOSABLE 1053.27	38 TAX TAXE 5% 52.66
16 THE UNDERSIGNED HAVE READ AND RECEIVED A COPY OF ABOVE AND REVERSE SIDE OF THIS CONTRACT. LE SOUSSIGNE, A LU ET RECU UNE COPIE RECTO ET VERSO DU PRESENT CONTRAT.		39 LIABILITY LIMITATION LIMITATION DE RESPONSABILITE 1105.93	40 OTHER AUTRE Damage 1000
SIGNATURE OF RENTER OR EMPLOYEE OF RENTER SIGNATURE DU LOCATAIRE OR EMPLOYEE DU LOCATAIRE George Kitagawa		41 RECEIPTS RECUS	42 DEPOSITS DEPOTS
17 HOME ADDRESS ADRESSE DOMICILE		43 TOTAL CHARGES COUT TOTAL 1205.93	44 LESS CREDITS A CREDITER
CITY VILLE		45 BALANCE DUE SOLDE DU	CASH COMPTANT <input type="checkbox"/>
LOCAL ADDRESS ADRESSE LOCALE RR #1 Westford PA		46 RECEIVED REFUND (TO BE INITIALED BY RENTER) REMBOURSEMENT RECU (A ETRE INITIALE PAR LE LOCATAIRE)	CHARGE A FACTURER <input type="checkbox"/>
19 TEL. NO.		INIT.	

15 IN CONSIDERATION OF THE PAYMENT OF EN CONSIDERATION DU PAIEMENT DE \$ **nil** PER DAY PAR JOUR **EXCESS WEAR AND TEAR IF VEHICLE DRIVEN OFF PAVED HIGHWAY.** **1000**

CUSTOMER'S LIABILITY FOR DAMAGE TO RENTED VEHICLE IS LIMITED TO: LA RESPONSABILITE DU LOCATAIRE POUR TOUS DOMMAGES CAUSES AU VEHICULE LOUE EST LIMITEE A: \$ **1000**

PROVIDED ALL TERMS OF THE RENTAL AGREEMENT ARE COMPLIED WITH POURVU QUE TOUTES LES CONDITIONS DU PRESENT CONTRAT SOIENT REMPLIES DU LOCATAIRE X

16 THE UNDERSIGNED HAVE READ AND RECEIVED A COPY OF ABOVE AND REVERSE SIDE OF THIS CONTRACT. LE SOUSSIGNE, A LU ET RECU UNE COPIE RECTO ET VERSO DU PRESENT CONTRAT.

SIGNATURE OF RENTER OR EMPLOYEE OF RENTER SIGNATURE DU LOCATAIRE OR EMPLOYEE DU LOCATAIRE **George Kitagawa**

17 HOME ADDRESS ADRESSE DOMICILE

CITY VILLE

LOCAL ADDRESS ADRESSE LOCALE **RR #1 Westford PA**

19 TEL. NO.

45 BALANCE DUE SOLDE DU

46 RECEIVED REFUND (TO BE INITIALED BY RENTER) REMBOURSEMENT RECU (A ETRE INITIALE PAR LE LOCATAIRE)


INIT.

DETACH HERE

PAI

DETACH AND RETURN THIS PORTION WITH YOUR REMITTANCE TO:

DÉTACHER ET RETOURNER CE COUPON AVEC VOTRE REMISE A:



TILDEN FEATURES PONTIACS AND OTHER FINE CARS
 TILDEN VOUS OFFRE DES PONTIAC OU AUTRES SUPERBES VOITURES.

NET DUE-NET DÙ

96-53169

ORIGINAL INVOICE-FACTURE

CUSTOMER IS LIABLE FOR ALL PARKING AND TRAFFIC VIOLATIONS.
 LOCATAIRE RESPONSABLE POUR TOUTES CONTRAVENTIONS DE STATIONNEMENT OU DE CIRCULATION.

TILDEN

THE ONLY CANADIAN NAME IN WORLD-WIDE CAR RENTALS

1 OWNER - LOCATEUR

TILDEN RENT-A-CAR SERV
453 LANSDOWNE STREET
KAMLOOPS B C

20 CUSTOMER - LOCATAIRE

~~MR GEORGE KITAGAWA~~
KAZUMI DOI
Power Reactor Fuel Develop
ment

20 HEREBY RENTS TO UNDERSIGNED - PAR LA PRESENTE LOUE AU SOUSSIGNE:

2 VEHICLE NO. VEHICULE	3 LIC. NO.	4 MAKE - MARQUE	5 STYLE	25 DATE & TIME IN DATE & HEURE RETOUR
	C31-419	BMC	ITON	
6 OWNER STATION - LOCATEUR	7 TO BE CHECKED IN AT - ARRIVERA A	8 WILL RETURN BY - RETOURNERA LE	26 DATE & TIME OUT DATE & HEURE DEPART	
KAMLOOPS	KAMLOOPS	JULY 31/69	MAY 16/69 AM 9:45	
9 CREDIT CARD - CARTE DE CREDIT NO.	10 DESTINATION	11 DRIVER'S LIC. NO. CONDUCTEUR	12 PROV. EXP.	13 P.O. - BON DE COMM.
	Grand Forks	04274/3	93 BC 274	
49 ALTERNATE CAR - AUTRE VOITURE			21 IN BY RETOUR PAR	
MILES IN MILLES RETOUR			28 20529	
MILES OUT MILLES DEPART			29 16785	
MILES DRIVEN MILLES CONDUITS			30 3744 @ 16.40 59904	
14 REMARKS - REMARQUES			31 HRS. HEURES	
driver lic. 12-69-1665-30685672550			32 DAYS JOURS 3 days @ 1173 3429	
gas included in 16.4 mile			33 WKS. SEM. 1/20 @ 80.- 880.00	
with spare tire & wheel, flares, high top, sides and yours for			34 TOTAL TIME & MILEAGE TOTAL TEMPS & MILLAGE 151333	
INVOICE FACTURE			35	
24 INTERCITY FEE TAUX INTERCITE			36 TOTAL TAXES 1969	

15 IN CONSIDERATION OF THE PAYMENT OF EN CONSIDERATION DU PAIEMENT DE \$ NIL PER DAY PAR JOUR	CUSTOMER RESPONSIBLE FOR EXCESS WEAR AND TEAR OF VEHICLE DRIVEN OFF ROAD HIGHWAY. \$ 100.00	37 TOTAL TAXABLE CHARGES TOTAL COUT IMPOSABLE 151333
CUSTOMER'S LIABILITY FOR DAMAGE TO RENTED VEHICLE IS LIMITED TO: LA RESPONSABILITE DU LOCATAIRE POUR TOUS DOMMAGES CAUSES AU VEHICULE LOUE EST LIMITEE A: \$ 100.00	38 TAX TAXE 570 Sales 75.67	39 LIABILITY LIMITATION LIMITATION DE LA RESPONSABILITE
16 I, THE UNDERSIGNED HAVE READ AND RECEIVED A COPY OF ABOVE AND REVERSE SIDE OF THIS CONTRACT. JE, SOUSSIGNE, AI LU ET RECU UNE COPIE RECTO ET VERSO DU PRESENT CONTRAT.	41 RECEIPTS RECUS 213.37 12-36	40 OTHER AUTRE 1589.00
SIGNATURE OF RENTER OR EMPLOYEE OF RENTER SIGNATURE DU LOCATAIRE OU EMPLOYE DU LOCATAIRE X	42 DEPOSITS DEPOTS	43 TOTAL CHARGES COUT TOTAL 1437.66
17 HOME ADDRESS ADRESSE DOMICILE	45 BALANCE DUE SOLDE DU	44 LESS CREDITS A CREDITER 225.31 723.6
CITY VILLE	46 RECEIVED REFUND (TO BE INITIALED BY RENTER) REMBOURSEMENT RECU (A ETRE INITIALE PAR LE LOCATAIRE)	45 CASH COMPTANT <input type="checkbox"/>
18 LOCAL ADDRESS ADRESSE LOCALE		46 CHARGE A FACTURER <input type="checkbox"/>
19 TEL. NO.		47 NOT DUE - NET DU 1211.93 1363.27

DETACH HERE

48

PAID

DETACH AND RETURN THIS PORTION WITH YOUR REMITTANCE TO:

DÉTACHER ET RETOURNER CE COUPON AVEC VOTRE REMISE A:

TILDEN FEATURES PONTIACS AND OTHER FINE CARS
TILDEN VOUS OFFRE DES PONTIAC OU AUTRES SUPERBES VOITURES.

96-53168

CUSTOMER IS LIABLE FOR ALL PARKING AND TRAFFIC VIOLATIONS.
LOCATAIRE RESPONSABLE POUR TOUTES CONTRAVENTIONS DE STATIONNEMENT OU DE CIRCULATION.

ORIGINAL INVOICE-FACTURE

TILDEN



THE ONLY CANADIAN NAME IN WORLD-WIDE CAR RENTALS

1 OWNER - LOCATEUR

TILDEN RENT-A-CAR INC
1453 LANSDOWNE STREET
CARLOOPS B C

20 CUSTOMER - LOCATAIRE
KAZUMI DOI
POWER REACTOR & NUCLEAR FUEL
DEVELOPMENT CORP.
9-13, 1-C HOME, AKASAKA, MINATO-KU,
TOKYO, JAPAN

Receipt No 8

20 HEREBY RENTS TO UNDERSIGNED PAR/CA RENT

2 VEHICLE NO. VÉHICULE	3 LIC. NO.	4 MAKE - MARQUE	5 MOD.	25 DATE & TIME IN
	C34-833	GMC	4WD	DATE & HEURE RETOUR
6 OWNER STAT. - PROPRIÉTAIRE	7 TO BE CHECKED IN AT - ARRIVERA À	8 RETURN DATE - DATE DE RETOUR	9 CREDIT CARD - CARTE DE CRÉDIT NO.	10 DESTINATION
Kanloops	Kanloops	July 30/69		Grand Forks
11 DRIVER'S LIC. NO. CONDUCTEUR	12 PROV. EXP.	13 P.O.-BON DE COMM.	26 DATE & TIME OUT	27 MILES IN
12-64-1665-30685672550	They Japan		DATE & HEURE DÉPART	MILES RETOUR
			May 30/69 11:30 a.m.	
49 ALTERNATE CAR - AUTRE VOITURE	21 IN BY RETOUR PAR	22 OUT BY DÉPART PAR	28 MILES OUT	29 MILES MILES
			MILES DÉPART	MILES @ 12.5/mile
14 REMARKS - REMARQUES	23 TRAVEL AGENT DE VOYAGE	34 TOTAL TIME & MILEAGE	35	36 SUB-TOTAL SOUS-TOTAL
8375 - month + gas (no mileage chg) over 2 months 350 - month + gas YOUR INVOICE ! (no mileage chg.) VOTRE FACTURE	☐	700 -		700 -
15 IN CONSIDERATION OF THE PAYMENT OF EN CONSIDÉRATION DU PAIEMENT DE	PER DAY PAR JOUR	CUSTOMER RESPONSIBLE FOR EXCESS WEAR AND TEAR IF VEHICLE DRIVEN OFF PAVED HIGHWAYS.	37 TOTAL TAXABLE CHARGES TOTAL COÛT IMPOSABLE	38 TAX TAXE
		\$100. -		5% tax 35 -
CUSTOMER'S LIABILITY FOR DAMAGE TO RENTED VEHICLE IS LIMITED TO: LA RESPONSABILITÉ DU LOCATAIRE POUR TOUS DOMMAGES CAUSÉS AU VÉHICULE LOUÉ EST LIMITÉE À:	CUSTOMER'S SIGNATURE SIGNATURE DU LOCATAIRE		39 LIABILITY LIMITATION, LIMITATION DE LA RESPONSABILITÉ	40 OTHER AUTRE
PROVIDED ALL TERMS OF THE RENTAL AGREEMENT ARE COMPLIED WITH. POURVU QUE TOUTES LES CONDITIONS DU PRÉSENT CONTRAT SOIENT REMPLIES.	X			
16 I, THE UNDERSIGNED HAVE READ AND RECEIVED A COPY OF ABOVE AND REVERSE SIDE OF THIS CONTRACT. JE, SOUSSIGNÉ, AI LU ET REÇU UNE COPIE RECTO ET VERSO DU PRÉSENT CONTRAT.	41 RECEIPTS REÇUS	42 DEPOSITS DÉPÔTS	43 TOTAL CHARGES COÛT TOTAL	44 LESS CREDITS À CRÉDITER
SIGNATURE OF RENTER OR EMPLOYEE OF RENTER SIGNATURE DU LOCATAIRE OU EMPLOYÉ DU LOCATAIRE X			735 -	
17 HOME ADDRESS ADRESSE DOMICILE	45 BALANCE DUE SOLDE DÛ	CASH COMPTANT <input type="checkbox"/>	46 RECEIVED REFUND (TO BE INITIALED BY RENTER) REMBOURSEMENT REÇU (À ÊTRE INITIALLÉ PAR LE LOCATAIRE)	INIT.
		CHARGE À FACTURER <input type="checkbox"/>		
CITY VILLE			735 -	
18 LOCAL ADDRESS ADRESSE LOCALE				
Rue K. Higuma				
19 TEL. NO.				

DETACH HERE

48 ORIGINAL INVOICE-FACTURE

DETACH AND RETURN THIS PORTION WITH YOUR REMITTANCE TO:
DÉTACHER ET RETOURNER CE COUPON AVEC VOTRE REMISE À:



TILDEN FEATURES PONTIACS AND OTHER FINE CARS
TILDEN VOUS OFFRE DES PONTIAC OU AUTRES SUPERBES VOITURES.

NET DUE NET DÛ

96-85766

CUSTOMER IS LIABLE FOR ALL PARKING AND TRAFFIC VIOLATIONS.
LOCATAIRE RESPONSABLE POUR TOUTES CONTRAVENTIONS DE STATIONNEMENT OU DE CIRCULATION.

Receipt No 9

ROCK CREEK ENTERPRISES LTD.

ROCK CREEK SERVICE
ROCK CREEK
B.C.



GOLD DUST MOTEL
L & M DODDS
TELEPHONE 446-2222

DATE August 3 1969

NAME _____

ADDRESS _____

QUAN.	DESCRIPTION	PRICE	AMOUNT			
	<i>Repairs on trucks from May 31st to Aug 31st</i>		<i>915.30</i>			
<p><i>Paid</i> <i>L & M Dodds</i></p>			TAX			
REC'D BY			TOTAL <i>915.30</i>			
CLERK	CASH	C.O.D.	CHARGE	ON ACCT.	MDSE. RETD.	PAID OUT

4542

VAL McDONALD LTD., GREENWOOD, B.C., W14082

1% PER MONTH WILL BE CHARGED ON OVERDUE ACCOUNTS

Receipt No. 10

ROCK CREEK ENTERPRISES LTD.

ROCK CREEK SERVICE
ROCK CREEK
B.C.



GOLD DUST MOTEL
L & M DODDS
TELEPHONE 446-2222

DATE *Aug 3rd* 19*69*

NAME _____

ADDRESS _____

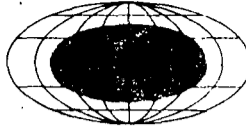
QUAN	DESCRIPTION	PRICE	AMOUNT			
	<i>Gasoline from May 27 to August 3rd.</i>		<i>715.74</i>			
<i>PAID</i>		TAX				
		REC'D BY	TOTAL <i>715.74</i>			
CLERK	CASH	C.O.D.	CHARGE	ON ACCT.	MDSE. RETD.	PAID OUT

4543

VAL McDONALD LTD., GREENWOOD, B.C., W14082

1% PER MONTH WILL BE CHARGED ON OVERDUE ACCOUNTS

PHONE 685-3535
TELEX 04-50167



NO. 43129

LEITH & DYKE LTD.

CUSTOMS HOUSE BROKERS
ONE BENTALL CENTRE, 505 BARRARD STREET,
VANCOUVER 1, B.C.

NISSHO IWAI CANADALTD.
#1112 UNITED KINGDOM BLDG.
409 GRANVILLE STREET
VANCOUVER, B.C.

DATE

JUN 4 69

FILE # 91987

A/C POWER REACTOR & NUCLEAR FUEL DEVELOPMENT CORP.

	REFERENCE		
RE: 38 CS. DRILLING EQUIPMENT FOR GEOLOGICAL SURVEY			
EX: YAMAKIKU MARU			
DUTY	29342	448042	11
CUSTOMS ENTRY FEE			
PAY FRT A. RESHIP		4800	3
SPECIAL SERVICES			
G 9 ADD ATTENTION 853		1000	1
INWARD CHARGES: FRT./KEX C. N.R. PRO	14366	6343	1
OND CHARGES			
OTHER CHARGES			

RECEIVED
JUN 5 1969
NISSHO-IWAI

RECEIVED
JUN 5 1969
MARKS 1

IMPORTANT

SHORTAGES OR ERRORS ON INVOICE MUST BE REPORTED TO CUSTOMS IN WRITING WITHIN 30 DAYS FROM DATE OF ENTRY. ERRORS IN TARIFF CLASSIFICATIONS OR APPRAISAL VALUES MUST BE REPORTED TO CUSTOMS ON PRESCRIBED FORM WITHIN 90 DAYS FROM DATE OF ENTRY. DAMAGES OR LOSSES MUST BE REPORTED TO CUSTOMS IN WRITING WITHIN 30 DAYS FROM DATE OF ENTRY

460185

AS WE MUST PAY CASH FOR ABOVE CHARGES, OUR INVOICE IS PAYABLE ON RECEIPT. OVERDUE ACCOUNTS WILL BE SUBJECT TO 7% INTEREST.
IF EXCHANGE NOT SHOWN ABOVE, PLEASE MAKE CHEQUE PAYABLE AT PAR VANCOUVER

PHONE 685-3555
TELEX 04-50167



NO. 43129 A

LEITH & DYKE LTD.

CUSTOMS HOUSE BROKERS
ONE BENTALL CENTRE, 505 BARRARD STREET,
VANCOUVER 1, B.C.

JUN 5 69

NISSHO IWAI CANADA LTD. #1112 UNITED KINGDOM BDLG. 409 GRANVILLE STREET VANCOUVER, B. C. A/C POWER REACTOR & NUCLEAR FUEL DEVELOPMENT CORP. OF TOKYO	DATE _____ FILE # 91987
--	----------------------------

RE: 38 CS. DRILLING EQUIPMENT
EX: YAMAKIKU MARU

TO PREPAID FREIGHT CHARGES
C.P.M. PRO 558-691

38400 1

REFERENCE

CIRCULAR _____
 S.I. _____
 K.R. _____
 I.M. _____
 J.S. _____
 P.R. _____
 REMARKS

RECEIVED
 JUN 6 1969
 NISSHO IWAI

IMPORTANT

SHORTAGES OR ERRORS ON INVOICE MUST BE REPORTED TO CUSTOMS IN WRITING WITHIN 30 DAYS FROM DATE OF ENTRY. ERRORS IN TARIFF CLASSIFICATIONS OR APPRAISAL VALUES MUST BE REPORTED TO CUSTOMS ON PREPAYMENT FORM WITHIN 90 DAYS FROM DATE OF ENTRY. DAMAGES OR LOSSES MUST BE REPORTED TO CUSTOMS IN WRITING WITHIN 30 DAYS FROM DATE OF ENTRY.

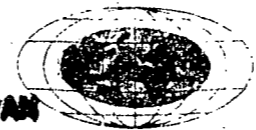
38400

AS WE MUST PAY CASH FOR ABOVE CHARGES, OUR INVOICE IS PAYABLE ON RECEIPT. OVERDUE ACCOUNTS WILL BE SUBJECT TO CURRENT INTEREST RATES.

IF EXCHANGE NOT SHOWN ABOVE, PLEASE MAKE CHEQUE PAYABLE AT PAR VANCOUVER

PORT OF **VANCOUVER**
 ARR. PER **YAKUKIMU MARU MAY 13/69**

NO. OF PIECES
3008'S B/L YOKO/YM-YV-9
 MANIFESTS NO.
 PRO. NO.
POWER OF ATTORNEY No



HEAD OFFICE:
 ONE BENTALL CENTRE
 505 BURNARD STREET
 VANCOUVER 1, B.C.
 BRANCH OFFICE:
 1855 KITCHENER ST., BURNABY, B.C.
 ALSO SERVING:
 PACIFIC HIGHWAY VANCE AIRPORT &
 HUNTINGDON ALDERGROVE F.P. GEORGE

A 29342

IMPORTED BY **POWER REACTOR & NUCLEAR FUEL DEVELOPMENT CORP., OF TOKYO JAPAN**
 ADDRESS **AGCT, NISHINO IWA1 CANADA LTD.,
 STE. 1112 UNITED KINGDOM BLDG.,
 409 GRANVILLE ST.,
 VANCOUVER B.C.**

**LETTER
 30171 / 30573 B/L/ND**

GOODS EXPORTED TO CANADA FROM **POWER REACTOR & NUCLEAR FUEL DEVELOP. CORP.,
 OF TOKYO-JAPAN
 TOKYO-JAPAN**

SALES TAX LICENCE **S**
 WE CERTIFY THAT THE GOODS ORDERED / IMPORTED HEREBY ARE TO BE USED AS OUTLINED IN SECTION 2 OF PART XIII OF SCHEDULE III OF THE EXCISE TAX ACT.

SALES TAX LICENCE **W**
 WE CERTIFY THAT THE GOODS ORDERED / IMPORTED HEREBY ARE TO BE USED AS OUTLINED IN SECTIONS 1, 3 AND 4 OF PART XIII OF SCHEDULE III OF THE EXCISE TAX ACT.

ACCOUNT NO. **13199**

DATE **6 APR. 30/69**
 EXCHANGE RATE **1.0000**
 INVOICE AMOUNT **14399.95**
 C9 NUMBER **CA-00853**

MARKS AND NUMBERS	NO. OF PKGS	DESCRIPTION OF GOODS	TARIFF ITEM APPLIED	QUANTITY	VALUE FOR DUTY IN DOLLARS	RATE OF DUTY OR FREE	TOTAL CUSTOM DUTY	DUTY PAID VALUE	SALES TAX	RATE OF EXCISE TAX	EXCISE TAX
30 CB'S	1BM	DRILLING EQUIP. FOR GEOLOGICAL SURVEY	41001-1		15557.00	15.00	2333.55	17892.55	2146.87		

File/alc

A determination of the tariff classification or an appraisal of the value for duty of any goods, made at the time of their entry, is final and conclusive unless the importer, or his authorized agent, within thirty days of the date of such determination, presents a prescribed form and makes a request for a determination...

PURCHASE ORDER **NOT ENTERED** SUBJECT TO AMENDMENT VALUE FOR DUTY TOTAL CUSTOM DUTY TOTAL SALES TAX TOTAL EXCISE TAX TOTAL

DECLARATION, FORM 4
 Declaration of the importer or agent of the importer prescribed to be made on entry of goods at a lower rate of duty or free for manufacturing purposes.
 of **VANCOUVER, BRITISH COLUMBIA** (Town) (Province)
 hereby certify and declare as follows:
 ATTORNEY FOR LEITH & DYKE LTD.
 That I am the **ATTORNEY FOR THE IMPORTER** of the goods referred to on this entry.
 That the goods referred to on this entry are for use exclusively in the manufacture of _____ in the owner's factory at _____ (Town) (Province).
 Such goods or parts thereof, will not be used for any other purpose.
 Declared this _____ day of _____ 19____

WITNESSED DECLARATION (FORMS 1 AND 2 ABBREVIATED)
P. STRAFFORD of **VANCOUVER, BRITISH COLUMBIA** (Town) (Province) hereby certify and declare as follows:
 ATTORNEY FOR LEITH & DYKE LTD.
 1. That I am the **ATTORNEY FOR THE IMPORTER** of the goods referred to on this entry.
 2. That form **1** on the reverse side hereof applies to the goods referred to on this entry and I have read such form and the facts set out therein are correct and I agree to be bound by the terms, conditions and obligations set out in such form.
 3. That to the best of my knowledge and belief the particulars set out on this entry are true, correct and complete.
 Declared this **MAY 12/69** day of _____ 19____

IF/WE THE UNDERSIGNED HAVE AUTHORIZED _____ TO PRESENT THIS ENTRY TO THE COLLECTOR OF CUSTOMS AND EXCISE AT THE PORT OF _____
 SIGNATURE _____ AGENT

INITIALS	DUTY	2333.55
	SALES TAX	2146.87
	EXCISE TAX	.00
	TOTAL	4480.42

POWER REACTOR AND NUCLEAR FUEL DEVELOPMENT CORPORATION

9-13, 1-Chome, Akasaka, Minato-ku, Tokyo, Japan

Reference:

March 26, 1969

Mr. Kemeth B. Blakey
Deputy Minister
Department of Mines and
Petroleum Resources
The Government of the Province
of British Columbia
Victoria, B. C.
Canada

Dear Sir,

As I wrote you in my previous letter of November 22, 1968, we are now planning to send an exploration team for uranium consisting of two geologists and two drilling engineers from early May to August.

Types of the works we are planning to carry out on our claims are as follows:

- 1) Geological survey : Observation of out-crops, Radiometric survey on the surface, Geologic mapping on a scale of 1/10,000
- 2) Drilling : Several holes, whose total length is about 1,000 ft

The names of the members of the exploration team are as follows:

Kazumi Doi, Geologist
Masaaki Suginoara, Geologist
Hajime Ota, Drilling Engineer
Yoshizo Tsukamoto, Drilling Engineer

The team will be headed by Mr. Doi.

Mr. Doi will prepare a geological report for the assessment work on our claims. He is not a

enclosure; Statement of Certificate of K. Doi
平 草 証 明 書

- 2 -


Professional Engineer in British Columbia, but graduated from the Geological Department, Tokyo University of Education and has been working as geologist in our Corporation for twelve years.

I enclose herewith the certificate of his graduation and the statement of certificate.

I should be very grateful if you admit the qualification of Mr. Doi as geologist.

I am looking forward to your answer at your earliest convenience.

Sincerely yours,


(Teiji Kamiyama)
Director



Document No 5

WHEN REPLYING PLEASE REFER TO

FILE NO.....

DEPARTMENT OF MINES AND PETROLEUM RESOURCES
VICTORIA

April 3, 1969



4/14

Mr. Teiji Kamiyama,
Director,
Power Reactor and Nuclear Fuel Development Corporation,
9-13, 1 Chome,
Akasaka, Minato-ku,
Tokyo, Japan.

Dear Mr. Kamiyama:

In reply to your letter of March 26,
the qualifications of Mr. Doi are quite acceptable
for the purpose of preparing geological reports
for acceptance in lieu of assessment work on mineral
claims in British Columbia. As you may know from
reading the regulations two such reports will be
accepted but a statement of qualifications must be
included in each report submitted.

Sincerely yours,

K. B. Blakey

Deputy Minister.

per DB

KBB:DB

Department of
Mines and Petroleum Resources
ASSESSMENT REPORT
NO. 2013 MAP #5

GEOLOGICAL MAP OF FUKI AND DONEN AREA

FIG. 3.

- LEGEND**
- 5 Basalt; Plateau basalt
 - 4 Andesite; Phoenix volcanic group, upper part (andesite and partially tuff)
 - 3 ditto; Phoenix volcanic group, lower part (tuff and partially andesite)
 - 2 Syenite; Coryell intrusions
 - 1 outcrop

Radiometric Survey
had been done along the line
③ radioactivity
30 micro-roentgen per hour, measured by
the type TGS-122B scintillation survey-
meter made by Nippon Musen K.K. in Japan.
back ground; 10 to 15

Scale 1/10,000

TORU KIKUCHI, P. Eng.
for
KAZUMI DOI
Toru Kikuchi



2013