

2066

Department of  
Mines and Petroleum Resources  
ASSESSMENT REPORT  
NO. 2066 MAP.....

GEOCHEMICAL SOIL SURVEY

TOM 1-2, TOM 9-20, JB 2-7, JB 9-12, JB 20-23,  
JB 25-28 and I.G. #1 Fraction Mineral Claims

50° 120° NW

R.C. HEIM, Ph.D., P. Eng.

J.D. Knauer

NORANDA EXPLORATION COMPANY, LIMITED

KAMLOOPS MINING DIVISION

July 1, 1969 TO August 16, 1969

## TABLE OF CONTENTS

	<u>Page</u>
INTRODUCTION	1
Location Map <i>No. 1</i>	
GENERAL GEOLOGY	2
GRID	2
GEOCHEMISTRY	2
Sampling Method	2
Laboratory Determination Methods	3
Presentation of Results	3
Discussion of Results	3
RECOMMENDATIONS AND CONCLUSIONS	4

*Map No. 1 -- Location map*  
*Map No. 2 -- Soil survey -- In pocket*

Geochemical Soil Survey  
of the  
Tom 1-2, Tom 9-20, JB 2-7, JB 9-12, JB 20-23,  
JB 25-28 and I.G. #1 Fraction Mineral Claims  
Noranda Exploration Company, Limited

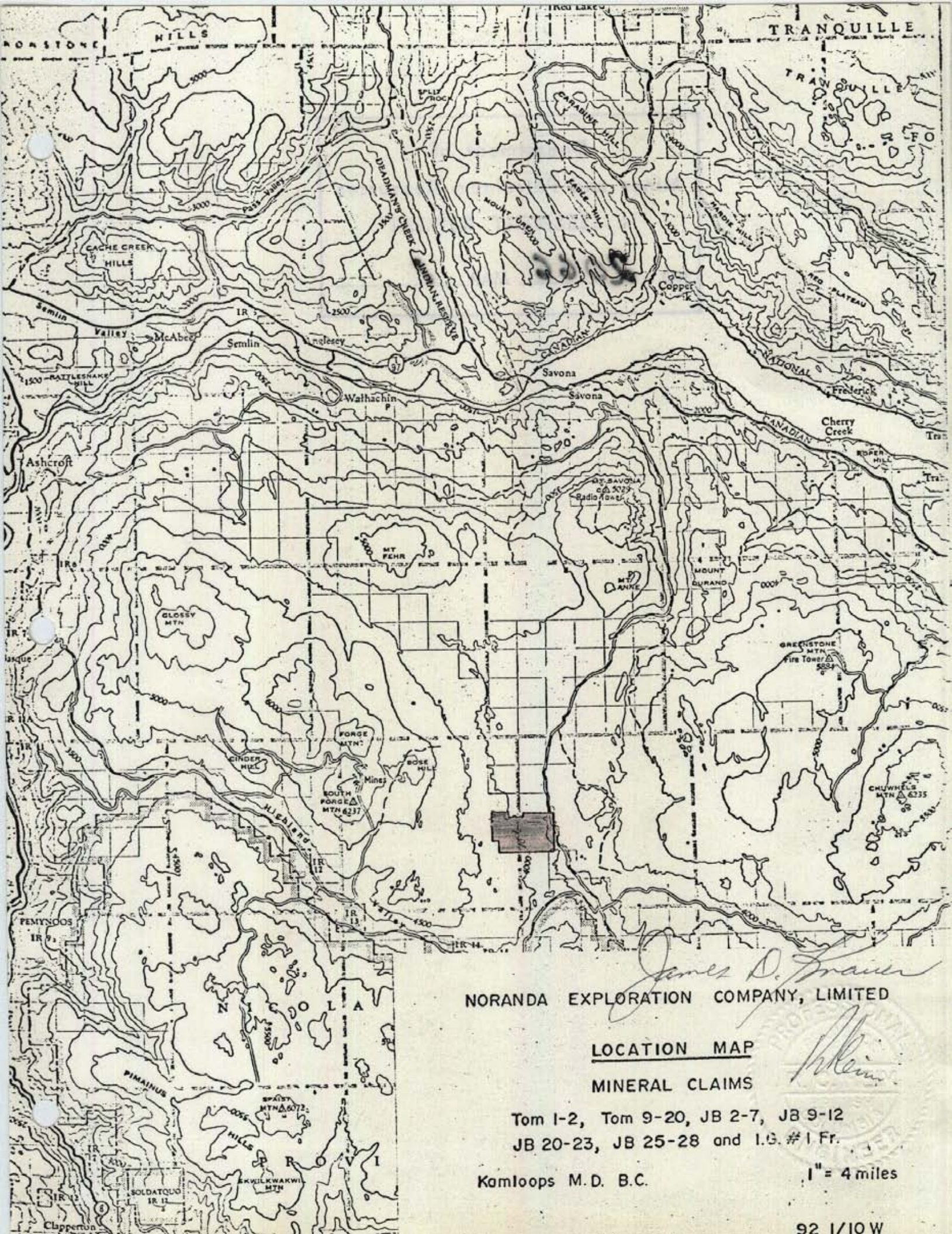
INTRODUCTION:

The claims referred to in this report are owned by North Pacific Mines Ltd. (NPL) and under option to Thermochem Industries Limited (which changed its name to Brameda Resources Limited) which has a working agreement with Noranda Exploration Company, Limited (No Personal Liability). The names and record numbers of the claims are: Tom 1-2, Tom 9-20, JB 2-7, JB 9-12, JB 20-23, JB 25-28 and I.G. #1 Fraction: 52684 to 52685, 52692 to 52703, 50628 to 50633, 50635 to 50638, 50639 to 50642, 50643 to 50646 and 78903 respectively. The survey was conducted on the above thirty two mineral claims and one fractional claim located approximately 16 miles south of Savona, B.C. Access to the claims is by loose-surface, all-weather road to a secondary road approximately 3 miles north of the Mamit Lake-Witches Brook intersection, which can be reached from Ashcroft, Merritt or Savona, B.C. From this turnoff a two-wheel drive road leads west to the claims. A four-wheel drive vehicle was used to transport men, equipment and supplies during the course of the survey.

Elevation ranges from 3,400 to 4,425 feet. Topography ranges from low swamp areas to gentle and rolling terrain with local steep slopes.

Previous work on the area covered by part of this survey included an Induced Polarization survey, bulldozer trenching and Magnetometer survey.

During May and June of 1969 Noranda Exploration Company, Limited extended and reestablished an existing grid. Following this a geochemical survey was performed on the JB 1-4, JB 7-10, Tom 3-10 and I.G. #1 Fraction claims. This geochemical survey was filed for assessment work in a report dated July 31, 1969. It was recommended in this previous report that an extension of the soil survey be carried out due to the positive results. During July and August of 1969 Noranda Exploration Company, Limited extended the existing grid. Following this a geochemical survey was performed on the Tom 1-2, Tom 9-20, JB 2-7, JB 9-12, JB 20-23, JB 25-28 and I.G. #1 Fraction claims.



*James D. Frazer*  
 NORANDA EXPLORATION COMPANY, LIMITED

LOCATION MAP

MINERAL CLAIMS

Tom 1-2, Tom 9-20, JB 2-7, JB 9-12  
 JB 20-23, JB 25-28 and I.G. #1 Fr.

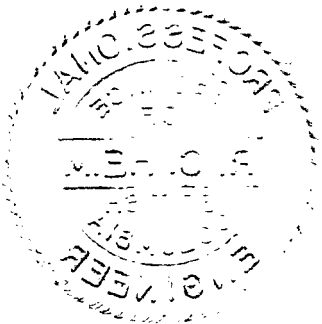
Kamloops M.D. B.C.

1" = 4 miles

92 1/10 W

Department of  
Mines and Petroleum Resources  
ASSESSMENT REPORT

NO. **2066** MAP **1**



Work was done under the direction of R.C. Heim, Ph.D., P. Eng. with field supervision by J.D. Knauer and a crew of 7 men. Results of the geochemical survey are plotted on a 1 inch to 400 feet base map. The survey was carried out from July 1, 1969 through August 16, 1969.

#### GENERAL GEOLOGY:

The area of the survey is underlain by quartz diorite and porphyries of the Guichon Creek Batholith. Mineralization consists of pyrite, chalcopyrite, bornite, magnetite, hematite and molybdenite. Secondary minerals include malachite, azurite and chrysocolla. Mineralization is associated with shearing and fractured zones.

#### GRID:

Roads, creeks, topography and tie lines were used in plotting the exact location of the existing grid and extensions (referred to in this report) on a topographic map made from aerial photographs. A control base line 0+00W extends east-west. This base line was chained, blazed and picketed at 100-foot intervals. Lines running north-south were established by chain and compass, marked by blazing, flagging and pickets. The north-south extension lines were spaced at 400-foot intervals 4E to 72W and at 800-foot intervals, 8E to 40E, along the base line. Noranda personnel developed the grid lines, a total of 18.5 miles.

#### GEOCHEMISTRY:

All samples were analyzed for copper and molybdenum in the Noranda Exploration Company, Limited laboratory located at 1050 Davie Street, Vancouver 5, B.C.

#### Sampling Method:

Samples were obtained by digging holes with a mattock and shovel, to a depth at which the visible grey C Horizon was encountered. The C Horizon was sampled and the lower part of the B Horizon, where visible, was also sampled. In addition a composite sample of the A Horizon was taken at most of the sample locations. The sampled material was placed in "Hi Strength Kraft, 3 1/2" by 6 1/8" Open End" envelopes and the grid station locations were marked on the envelopes with indelible felt pens.

Soil samples were taken at 200-foot intervals along the north-south lines.

Laboratory Determination Methods:

The samples are first hung in a dry cabinet for a period of 24 hours to 48 hours. They are then mechanically screened and sifted to obtain a -80 mesh fraction.

The determination procedure for total copper is as follows: 0.125 grams of -80 mesh material is fused with potassium bisulfate. This is dissolved in .5 ml. of 0.5N hydrochloric acid. A 2 ml. aliquot is shaken with 10 ml. acetate buffer and 1 ml. biquinolin solution. The samples are then compared with colorimetric standards.

The determination procedure for total molybdenum is as follows: 0.1 gram sample of the -80 mesh material is fused with a sodium carbonate mixture. It is then dissolved in water (demineralized) and diluted to 10 ml. A 2 ml. aliquot is shaken with 2 ml. hydroxylamine hydrochloride solution and 0.5 ml. dithiol solution. The samples are then compared with colorimetric standards.

Presentation of Results:

Results of this survey are presented on a plan map showing copper and molybdenum determinations in parts per million. Copper values greater than 240 p.p.m. are contoured by solid lines and molybdenum values greater than 2 p.p.m. are contoured by dotted lines.

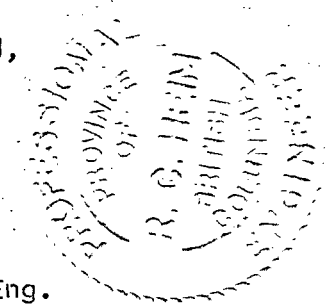
Discussion of Results:

Values for total copper range from a background of 100 p.p.m. to a maximum intensity of 1600 p.p.m. Molybdenum values showed a background of 0-2 p.p.m. with only 3 determinations greater than 2 p.p.m. and these were all 5 p.p.m. Results for copper show anomalous zones on the JB 12, JB 3-6, Tom 17, Tom 19-20 and Tom 12-13 claims. Smaller anomalies are indicated around these larger anomalous zones and also a few small anomalies occur on the western extension. The 5 p.p.m. molybdenum values are indicated on the enclosed map, but are not intense enough to be considered anomalous.

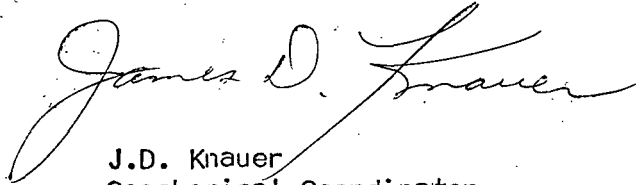
RECOMMENDATIONS AND CONCLUSIONS:

A comprehensive study of all information including the completed Induced Polarization survey, the detailed geological mapping and the entire geochemical soil survey program carried out by Noranda Exploration Company, Limited should be made to determine the best targets to be investigated in the drilling program.

Respectfully submitted,



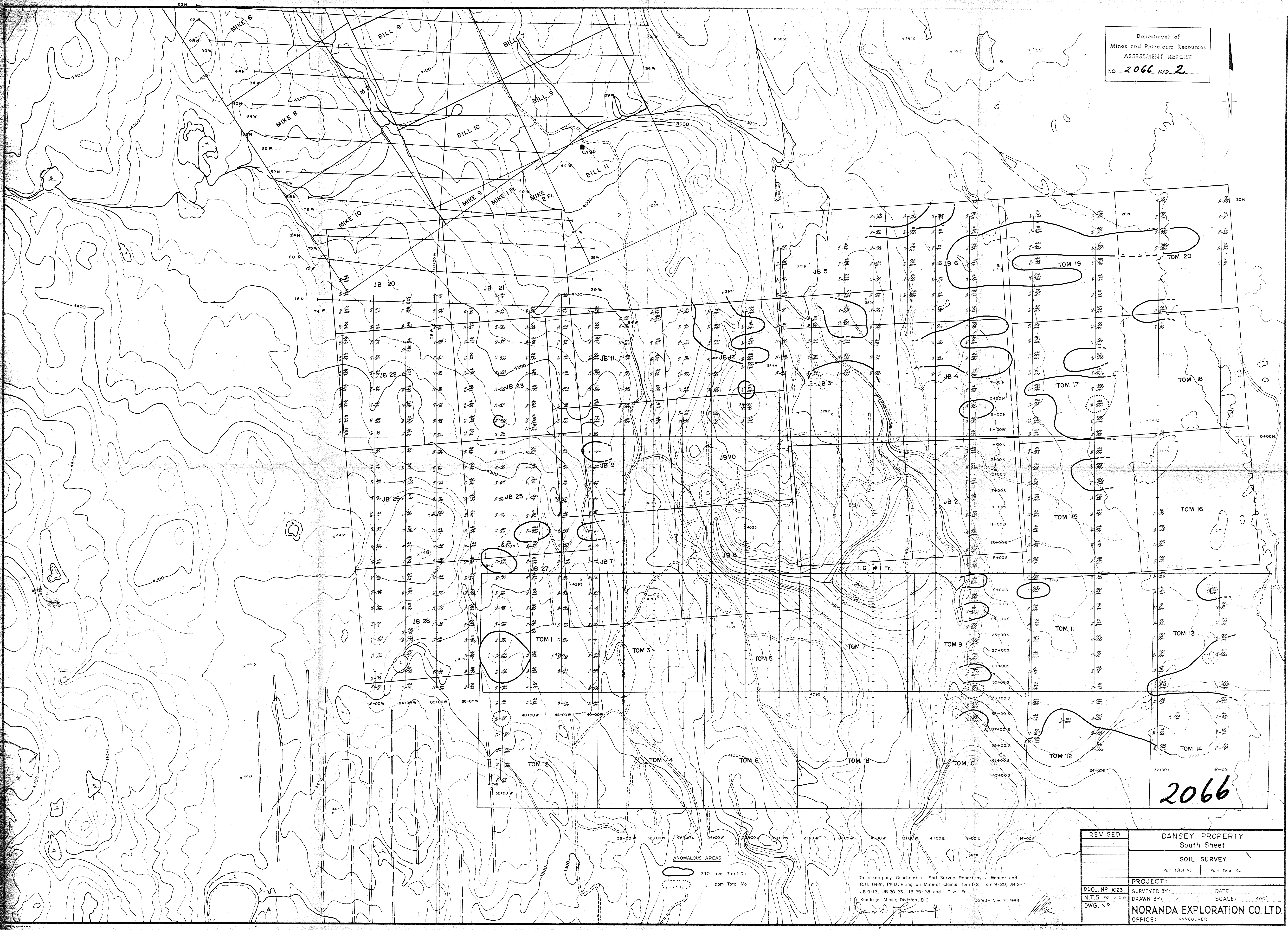
R.C. Heim, Ph.D., P. Eng.



J.D. Knauer  
Geochemical Coordinator

November 7, 1969





2066

ANOMALOUS AREAS  
 ○ 240 ppm Total Cu  
 ○ 5 ppm Total Mo

To accompany Geochemical Soil Survey Report by J. Mauer and R. H. Heen, Ph.D., P. Eng. on Mineral Claims Tom 1-2, Tom 9-20, JB 2-7, JB 9-12, JB 20-23, JB 25-28 and I.G. #1 Fr.  
 Kamloops Mining Division, B.C. Dated - Nov. 7, 1969.

REVISED	DANSEY PROPERTY South Sheet	
	SOIL SURVEY	
	Ppm Total Mo	Ppm Total Cu
PROJECT:		
PROJ. NO. 1023	SURVEYED BY:	DATE:
N.T.S. 32 1/2" x 10"	DRAWN BY:	SCALE: 1" = 400'
DWG. NO.	NORANDA EXPLORATION CO. LTD.	
	OFFICE: VANCOUVER	