

2147

A

GEOCHEMICAL REPORT

on

THE NED CLAIMS (1 - 20)

KAMLOOPS MINING DIVISION
PROVINCE OF BRITISH COLUMBIA

by

T.L. Sadlier-Brown

E.O. Chisholm, P.Eng.

DECEMBER 1969

Location: North Slope of Greenstone Mountain,
15 Miles West of Kamloops
Kamloops Mining Division

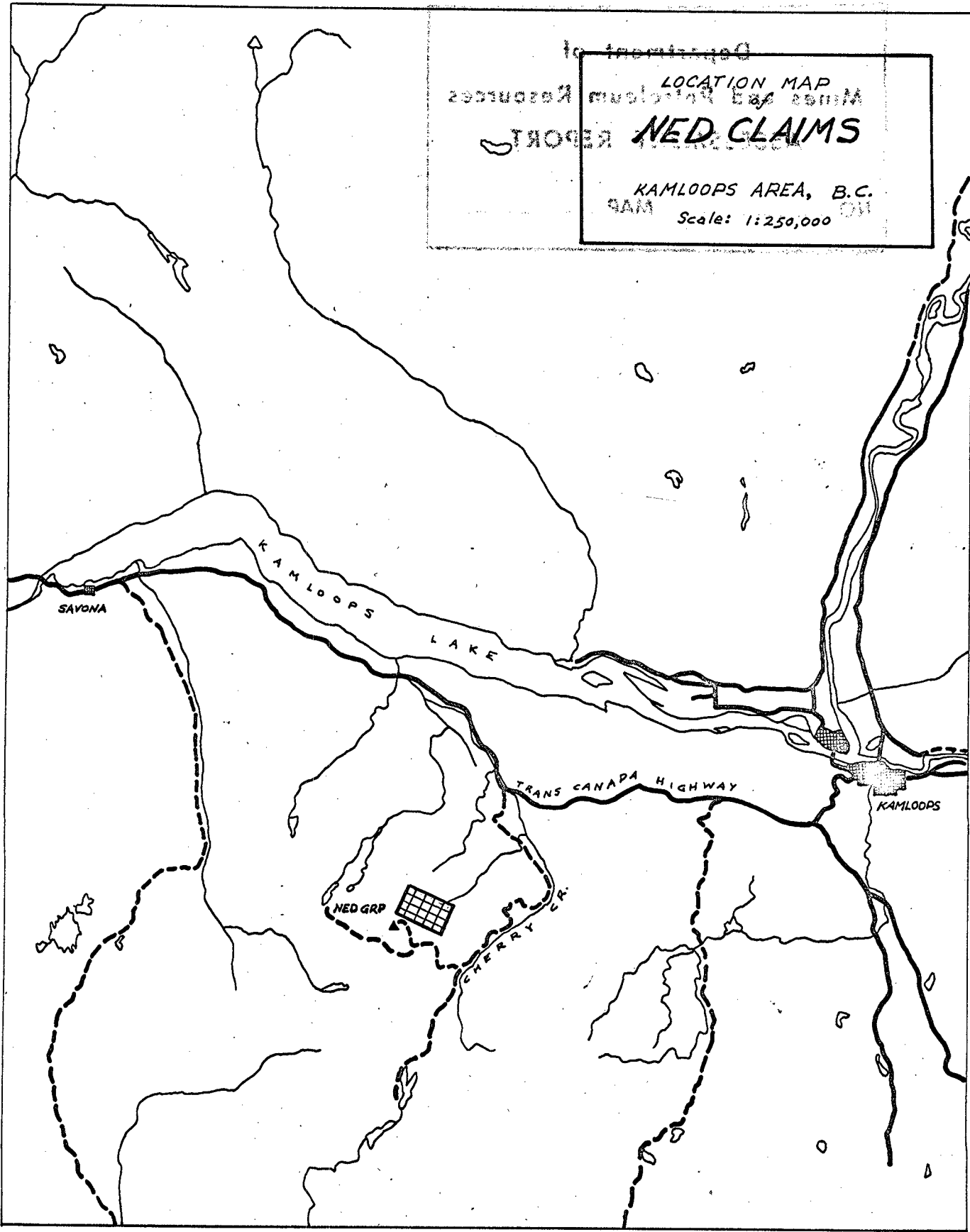
120° N.Lat., 50° W. Long. (N.E.)
N.T.S. Sheet 92 I 10(E)

Dates: July 10 - August 8, 1969

Holder: E.O. Chisholm
821-602 West Hastings Street
Vancouver 2, B.C.

Department of
Mines and Technical Resources
REPORT **NED CLAIMS**

KAMLOOPS AREA, B.C.
Scale: 1:250,000



Department of
Mines and Petroleum Resources
ASSESSMENT REPORT

NO. 2147 MAP #1

TABLE OF CONTENTS

Page No.

INTRODUCTION

Location and Access 1

Topography 1

General Geology 2

GEOCHEMISTRY

Specifications 2

Observations 3

CONCLUSIONS AND RECOMMENDATIONS . . . 3

QUALIFICATIONS OF AUTHOR 5

LIST OF FIELD PERSONNEL 6

#1 location
#2 MAP Pocket

A GEOCHEMICAL REPORT ON THE NED CLAIMS

INTRODUCTION

Location and Access

The Ned Group consists of twenty contiguous mineral claims located on the north slope of Greenstone Mountain about 15 miles west of Kamloops, British Columbia. They are accessible via the road which leads south from the Trans Canada Highway at Cherry Creek to the vicinity of Dairy Lakes and the summit of Greenstone Mountain. From the latter, the claims are only a short distance down the mountain to the northeast.

Topography

The property is located on a shoulder on the north slope of Greenstone Mountain which is one of several high hills rimming the north end of the irregular plateau country south of Kamloops Lake. The elevation in the vicinity of the claims is between 5000 and 5500 feet above sea level.

On the claims themselves, there is a general slope to the northeast broken by a few irregular ridges. Drainage is northeast via Ned Roberts and Pendleton Creeks, both of which have their sources on or near the claims.

The area is mantled by a dense coniferous forest with moderate to heavy underbrush and a number of moist boggy areas. Frequency of outcrop is moderate, perhaps somewhat lower than might normally be expected on a mountain slope. Overburden is probably thickest in the swampy saddle areas between the main slope and subsidiary ridges but also appears to be heavy on many parts of the

north slope itself.

General Geology

The claims for the most part are underlain by altered porphyritic andesites belonging to the Nicola Group, a broadly distributed series of triassic intermediate to basic volcanic rocks. On the claim group the volcanics have been intruded by a granite body of uncertain dimensions but, generally, thought to be small.

No detailed geological work has yet been done on the property.

GEOCHEMISTRY

Specifications

Prospecting and geochemical soil sampling were carried out on the Ned Claims by a crew of three to four men under the writer's supervision, during July and August, 1969. The sampling survey was of a reconnaissance type using claim lines and pace and compass lines for control. A total of about 600 soil samples were taken at 100 foot intervals along the lines. Mattocks were used as sampling tools and, for consistency, an effort was made to sample the "B" soil horizon. This however was not always possible as, in many cases, all that could be obtained was a black muck. Samples were placed in paper soil sample envelopes, numbered, and shipped to the Chisholm Prospection Laboratory at 8427 Ontario Street, Vancouver, B.C. There they were dried in an electric drying oven and screened to -80 mesh. 1/2 Gram of each was then dissolved in hot perchloric nitric acid and the resulting solution tested for copper, using a

Perkin-Elmer 290-B Atomic Absorption Spectrophotometer. Analytical work was directed by Mr. J.B. O'Donnell of Chisholm Prospection Ltd.

Results were given in parts per million copper in soils. These were plotted at a scale of 400 feet to the inch on the accompanying map.

Observations

Copper values on the Ned Claims vary from a low of 7 p.p.m. to a high of 670 p.p.m. with a majority lying in the 20-50 p.p.m. range. If the value of 60 p.p.m. is chosen as "threshold" and contoured, it effectively encloses the bulk of the higher values producing an irregular shaped anomaly (or anomalies) with a very approximate east/west trend in the southwest part of the area surveyed. The anomalous values are distributed over an area at least 4,000 feet long and up to 1,000 feet wide though generally narrower. The best section is across about 1500 feet at the southern end of line 45E which has been plotted in profile for comparison with other data.

CONCLUSIONS AND RECOMMENDATIONS

Little is known about the cause of the anomaly as no significant amounts of copper mineral have been found on the claims so far. It is possible, however, that it may reflect a variation in the soil type which in turn may be caused by a topographic depression in the area. Generally speaking, the soils from the anomalous area were darker and more moist than from elsewhere on the group and it may be that copper is merely accumulating better in them than

elsewhere. Whether this explanation is sufficient to explain variations by a factor of 10 in the copper content in this area is, however, still in question.

Some of the questions may be answered by additional work on the existing lines including topographic and geological surveys and a re-examination of the geochemical environment, preferably by a consulting geochemist. If this work indicates that the copper anomaly is of economic significance, then a thorough exploration program should be initiated. It should include line-cutting and geological, geophysical and geochemical work based on the findings of the detailed work on the existing grid.

Respectfully submitted,



T.L. Sadlier-Brown

T.L. SADLIER-BROWN : STATEMENT OF QUALIFICATIONS

Education: Four years geology, Carleton University,
Ottawa, Ontario.

Experience: Summer field experience with the Geological
Survey of Canada in Northwest Territories,
Northern British Columbia and Ottawa; with
Hollinger Consolidated Gold Mines in Northern
Ontario; with McIntyre Porcupine Mines in
Northern Quebec; with Mattagami Syndicate in
Northern Quebec; with Southwest Potash Corp-
oration in Central British Columbia.

Full time field and office experience in
geology and related fields with Geological
Survey of Canada (as Technical Officer); with
Mt. Costigan Mines Ltd. in Nova Scotia; with
Atlas Explorations Ltd. in Yukon, Alaska and
British Columbia; with P.H. Sevensma Consultants
in Yukon and Northern British Columbia; and
with Chisholm Prospection Ltd. in Southern
British Columbia.

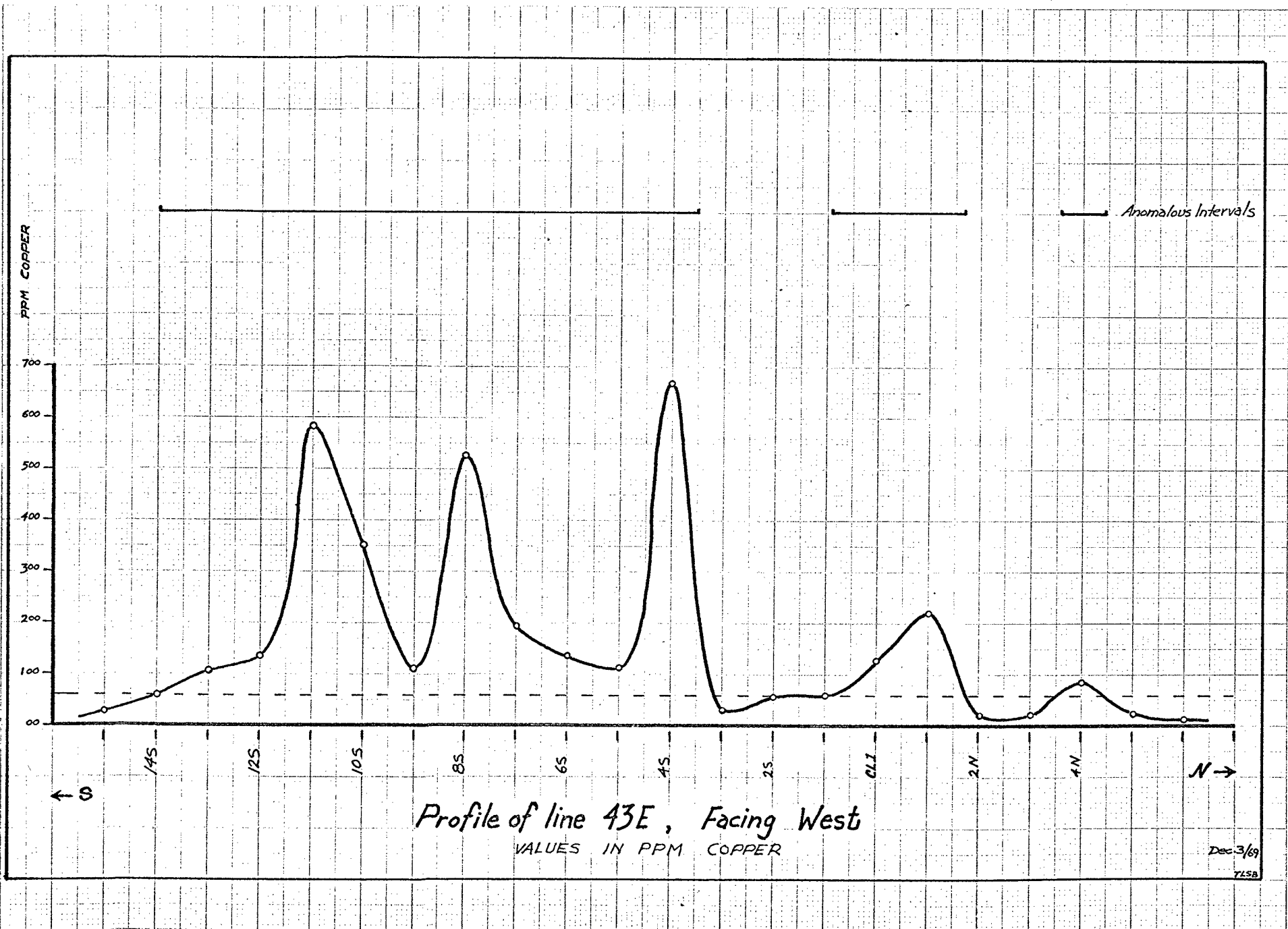
T.L. Sadlier-Brown

T.L. Sadlier-Brown

December 8th, 1969

LIST OF FIELD PERSONNEL

T.L. Sadlier-Brown	Geologist
M.B. Richings	Geologist
H.J. Buczko	Prospector
Y. Tanaka	Soil Sampler
J. Vyselaar	Soil Sampler



Dec-3/69

745B

DOMINION OF CANADA:
PROVINCE OF BRITISH COLUMBIA.
To Wit:

In the Matter of ASSESSMENT WORK ON THE NED GROUP
OF CLAIMS, KAMLOOPS MINING DIVISION.

I, TIMOTHY L. SADLIER-BROWN
of 2033 COMOX STREET, VANCOUVER

in the Province of British Columbia, do solemnly declare that

1. The work described in this report was carried out on July 4-12, 26-31 and on August 1st, 7th and 8th, 1969 (18 days).
2. Two soil samplers were employed at rates of \$400./month.
One Prospector was employed at a rate of \$750./month.
One Geologist was employed at \$500./month.
One Supervisor was employed at \$900./month.
3. Wages paid each man during the periods of work on the claims and directly related travel were:

Soil Sampler 1	\$240
Soil Sampler 2	240
Prospector	450
Geologist	60
Supervisor	120

4. Additional direct costs were:

Camp and field costs	\$540
Vehicle Costs	180
Geochemical Analysis	720

And I make this solemn declaration conscientiously believing it to be true, and knowing that it is of the same force and effect as if made under oath and by virtue of the "Canada Evidence Act."

Declared before me at the City
of Vancouver, in the
Province of British Columbia, this 10th
day of December, 1969, A.D.

Timothy L. Sadlier-Brown

L. Jeannotte
A Commissioner for taking Affidavits for British Columbia or
A Notary Public in and for the Province of British Columbia.

Sub-mining Recorder

In the Matter of

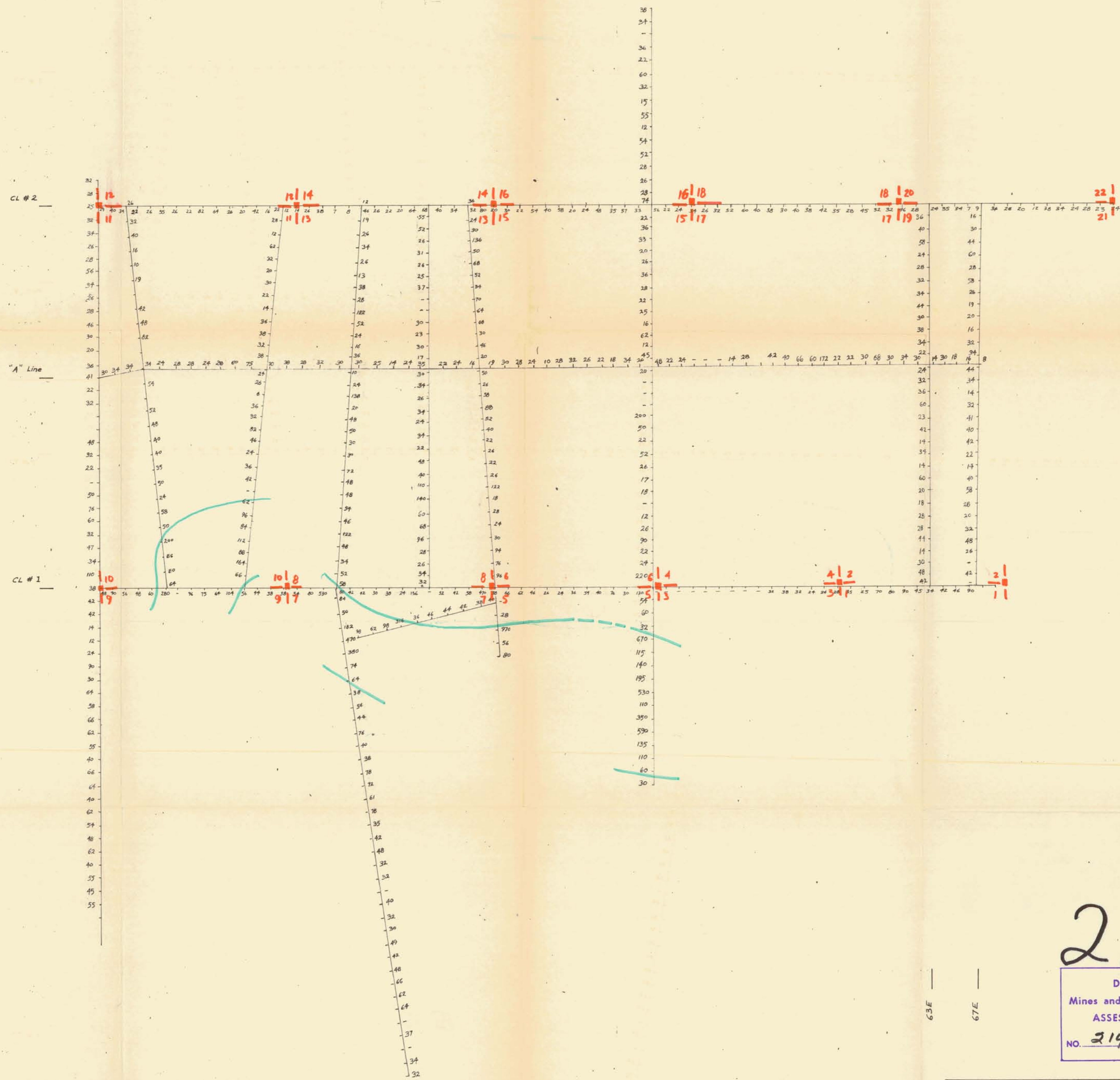
.....

.....

.....

.....

Statutory Declaration
(CANADA EVIDENCE ACT)



2147

Department of
Mines and Petroleum Resources
ASSESSMENT REPORT
NO. 2147 MAP # 2

RECONNAISSANCE COPPER GEOCHEMISTRY
NED GROUP

Chisholm Prospection Ltd.

Scale: 1" to 100'

Threshold Contour (60PPM)

TL28 JULY/69