

2158

GEOLOGICAL, GEOCHEMICAL and GEOPHYSICAL REPORT

on CLAIM M A R S 2

1 mile W of SOUTH SEAS Camp, 50° 121° N.E.

by GUELPA Jean-Paul, Geologist,

on SOUTH SEAS MINING PROPERTY for SOUTH SEAS MINING LTD

Work done from October 30th, 1969 to November 12th, 1969

TABLE OF CONTENTS

	<u>Number of pages</u>
Table of contents	1
List of maps	2
A - Work done	3
I. Line-cutting	
II. Geological survey	
III. Geochemical survey	
IV. Geophysical survey	4
B - Cost of work	5
I. Salaries of employees	
II. Other expenses	
Statement of reporter's qualifications	6

Department of
Mines and Petroleum Resources
ASSESSMENT REPORT

NO. 2158 MAP _____

LIST OF MAPS

	<u>Number of maps</u>
#1 Geology and geochemistry	1 — In Packet
#2 Magnetism	2 — In Packet
#3 Location of claim Mars 2	3 — In Packet

A - WORK DONE ON CLAIM M A R S 2 - SOUTH SEAS MINING -

I. Line-cutting on Claim M A R S 2.

A line-cutting has been done on the property in order to perform magnetic survey and geochemical sampling.

Lines are spaced of 400' and bear a flag each 100' forming a grid of 400' x 100'.

The area of claim MA R S 2 is covered by lines 28 S, 24 S, 16 S and 16 bis S between heights 39 W and 53 W (See map # 1).

These lines have been drawn by a prospector, named Andre HUMBERT, using a topofil "Chaix". This man was paid \$ 25 a day and it took to him one day to do this work.

II. Geological survey.

The area of claim MA R S 2 has been surveyed in detail. Concerning outcrops, we just found some outcrops of volcanics devoid of interest. The whole area is covered with glacial overburden except near the top of South Forge Mountain where we found the volcanics (NW corner of the claim) (See map # 1).

III. Geochemical survey.

Soil samples have been taken along lines 28 S, 24 S, 16 S and 16 bis S each 100' (51 samples).

The sampling has been performed using a hand-drill at a depth of one foot, i.e. beneath the organic layer, here very thin. The samples have been put in strong paper bags and sent to Coastelridge Laboratory in Vancouver.

Analysis : The analysis has been done by the method of atomic

absorption ; the results have been reported on an enclosed map (map # 1).

No interesting result can be noticed further to this analysis.

IV. Geophysical survey.

A magnetic survey has been performed on claim M A R S 2 according to the grid 400' x 100' using a M F I magnetometer.

70 measurements have been taken along lines 28 S, 24 S, 16 S , 16 bis S . The isogams 0 +200 +400 +700 +1000 have been drawn from the readings.

The magnetic survey is reported on an enclosed map (map # 2).

An anomaly can be observed on the North-East corner, but it affects the tertiary lavas and so is of no interest for us.

B - COST OF WORK DONE ON CLAIM M A R S 2.

I. Salaries of employees.

Line-cutting was done by Andre HUMBERT, a prospector at the salary of \$ 25 per day.

One day was necessary for performing this line-cutting (November 4th).

Geological survey was done on November 6th by myself, a geologist at the employment of the Company at a daily salary of \$ 40.

Geochemical sampling was done the same November 6th by Andre HUMBERT, the above-mentioned prospector.

Magnetic survey was performed on November 7th by Andre HUMBERT, who took 71 measurements.

So, the total amount paid to Andre HUMBERT for line-cutting, geochemical sampling and magnetic survey is : $25 \times 3 = \$ 75$.

The amount paid to myself is of \$ 40.

II. Other expenses .

The amount paid to Coastelridge Laboratory for the analysis of 51 soil samples is \$ 51.

The magnetometer used was rented at a rate of \$ 8. a day. For transportation to the Claim location, on November 4th, 6th and 7th, we used a G.M.C. truck rented by "Redhawk Rental" in Vancouver, the rate being \$ 35 for three days.

So, the total amount spent for the work done on the Claim M A R S 2 is : \$ 209.

.../...

This report has been prepared by Mr. GUELPA Jean-Paul, geologist,
Thesis 3rd cycle, University of LYONS, FRANCE.

SOUTH SEAS Camp, December 5th, 1969.



J.P. Guelpa, Geologist.

SOUTH SEAS MINING LTD

Location of Claim

MARS 2

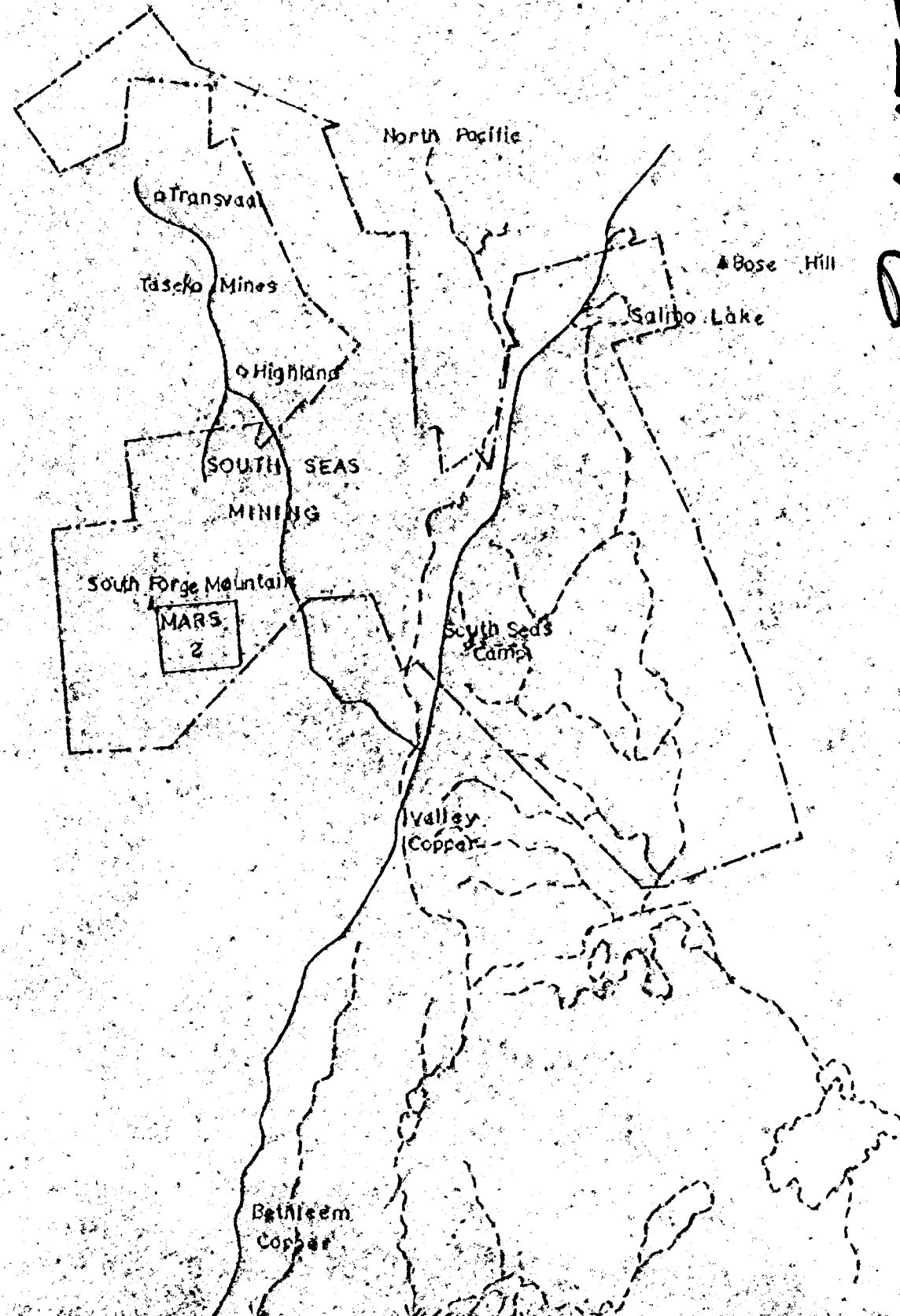
in SOUTH SEAS MINING
PROPERTY

(Highland Valley)

1" = 2650'

DRAWN BY: J.P. GUELPA
DATE : NOVEMBER 1969

Department of
Mines and Petroleum Resources
ASSESSMENT REPORT
NO. 2158 MAP #3



2158

To accompany report by J.P. GUELPA - Geologist,
on the Claim MARS 2, South Seas Mining - Kamloops Mining Division
November 10th, 1969.
Guelpa

PECHINEY DEVELOPMENT LTD

PLAN N° 2

SOUTH SEAS MINING LTD

MAGNETISME (MARS)

AUTEURS A. A. HUMBERT
(Authors) : J. P. GUELPA

DATE : 10 NOVEMBRE 1969
(November 10th 1969)

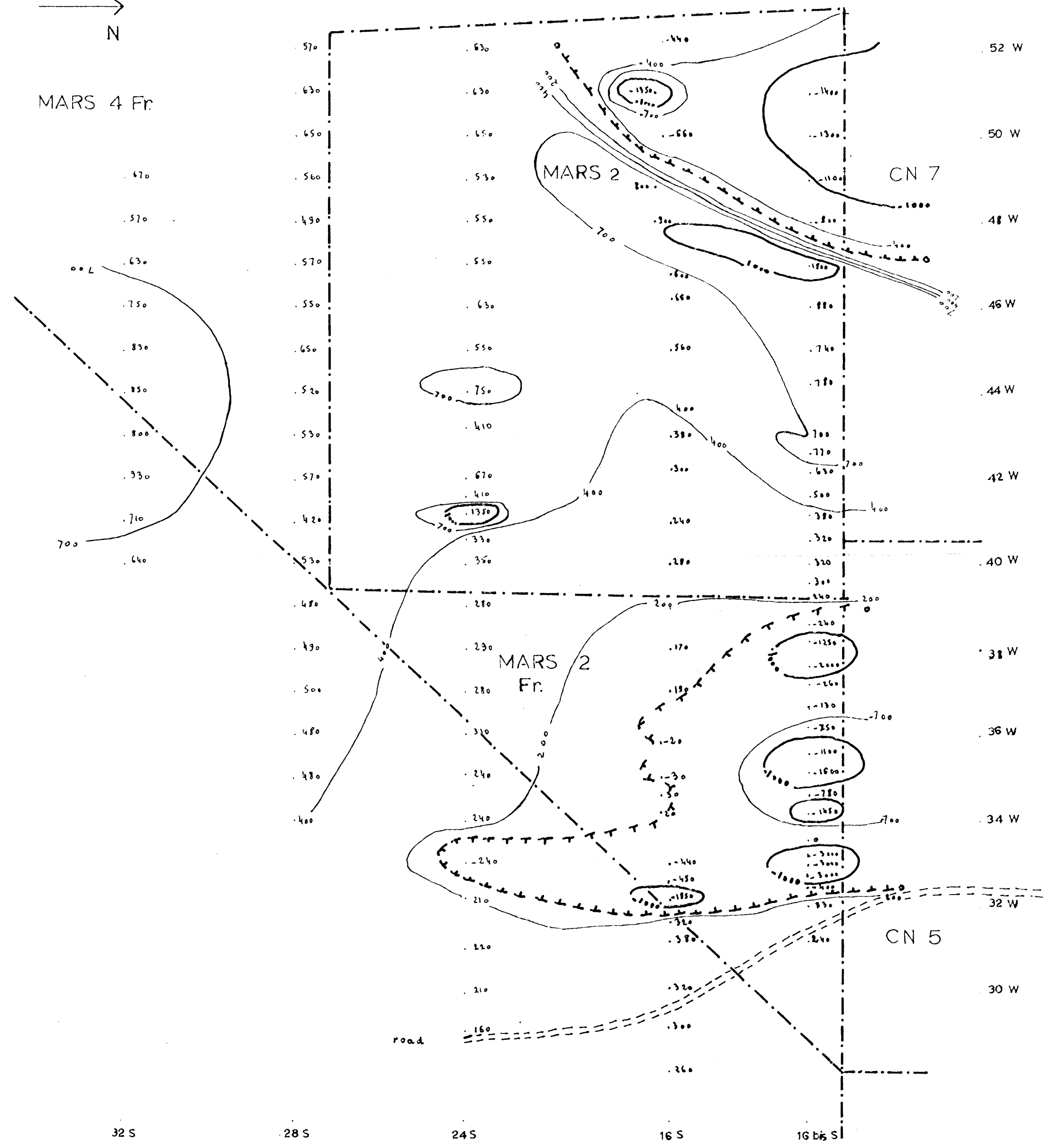
1" = 200'



Department of
Mines and Petroleum Resources
ASSESSMENT REPORT
NO. 2158 MAP #2



MARS 4 Fr



To accompany geophysical report by J.P. GUELPA - Geologist,
on the Claim MARS 2, South Seas Mining - Kamloops Mining Division
November 10th, 1969. *J.P. Guelpa*

2158

PECHINEY DEVELOPMENT LTD

PLAN N° 1

SOUTH SEAS MINING LTD

GEOLOGIE

GEOCHIMIE

(MARS)

GEOLOGY

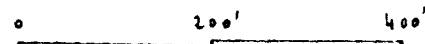
GEOCHEMISTRY

AUTEUR: J.-P. GUELPA
(Author):

DATE: 10 NOVEMBRE 1969

(NOVEMBER 10th, 1969)

1"=200'



LEGENDE

1 VOLCANICS

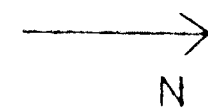
Teneurs en cuivre des prélèvements géochimiques.

Grade in copper from soil samples.

- < 25 ppm
- ◐ 25 - 49 ppm
- ◑ 50 - 99 ppm
- ◒ 100 - 199 ppm
- ◓ ≥ 200 ppm

Department of
Mines and Petroleum Resources
ASSESSMENT REPORT

NO. 2158 MAP #1



MARS 4 Fr

MARS 2

MARS 2
Fr

CN 5

1 CN 7

. 52 W

. 50 W

. 48 W

. 46 W

. 44 W

. 42 W

. 40 W

. 38 W

. 36 W

. 34 W

. 32 W

. 30 W

road

32 S

28 S

24 S

16 S

16 bis S

To accompany geological and geochemical report by J.-P. GUELPA, Geologist,
on the Claim MARS 2, South Seas Mining - Kamloops Mining Division
November 10th, 1969.

Guelpa *Guelpa*

2158