

2163

GEOLOGICAL-GEOCHEMICAL REPORT

on the

TANA GROUP

OWNER: QUINTANA MINERALS CORPORATION

CLAIMS: TANA 501-562, 591,592, 601-612,  
621-686, 689-740, 743-748,  
752-919, 921-940, 943-954,  
1-62

TAN 5-22, 45, 47-86

AV 1-20

GATE 1-12

OGM 143B, 144B

Latitude 48°

Longitude 124 NE

Victoria Mining Division

Author: D.C. Malcolm B.A.Sc. P.Eng. 2568

Dates of Work: May-October, 1969

TABLE OF CONTENTS

	<u>Page</u>
Summary	1
Location	1
Topography	2
General Geology	2
Claim Geology	4
Geochemical Survey	6
1. Survey	6
2. Sampling	6
3. Assaying	7
Results of Surveys	7
Conclusion	12

Department of  
Mines and Petroleum Resources  
ASSESSMENT REPORT

NO. 2163 MAP.....

Table of Contents - ii

Appendix 1      Claims

Appendix 11     Accounting Statement

Appendix 111    Assay Forms

ACCOMPANYING MAPS

Map #1 1.

Location Map

REAR

Map #2 2.

Geological Map

REAR POCKET

Map #3 3.

Geochemical Map (Molybdenum)

REAR POCKET

Map #4 4.

Geochemical Map (Copper)

REAR POCKET

TANA CLAIMS

SUMMARY

In 1969 Quintana Minerals Corporation made a geological-geochemical study of 535 claims in the Gate, Av, Tan, O.G.M., and Tana groups in the mountains between the Nitinat and Caycuse Rivers on southern Vancouver Island. An outcrop map was made and approximately 3000 samples were tested for copper and molybdenum.

A taconite deposit was outlined between Tenas and Granite Creeks, a porphyry deposit showed copper anomalies east of Granite Creek, a large claim area in Bonanza Formation rocks was found to be copper poor near Raymond Creek, a pyritic porphyry deposit on 7 Mile Creek was copper poor and a caldera complex on Camp and Nixon Creeks showed widespread copper mineralization.

Surface prospecting was not very successful due to surface oxidization and leaching of outcrops and the lack of outcrops in key locations.

LOCATION

Latitude 48° 50' North  
Longitude 124° 30' West  
Elevation 500' to 3000'

On Southern Vancouver Island,  
60 miles south of Vancouver.

The claims are reached via Duncan, Cowichan Lake, Honeymoon Bay and by the McMillan and Bloedell main haul road along the Nitinat River or by B.C. Forest Products main haul road up Nixon Creek and along the Caycuse River. Good logging roads reach all parts of the claims.

### TOPOGRAPHY

The claims cover the valley of the Nitinat River at elevations of 400 to 500 feet and extend south over a low range of hills with peaks at elevations of 2900 to 3000 feet and passes at elevations of 2000 feet. The Caycuse River, south of the claims, flows west at elevations of 500 to 600 feet. Tenas, Granite and Vernon Creeks drain north to the Nitinat and Camp, Wilson and 7 Mile Creeks drain south to the Caycuse. Nixon and Raymond Creeks drain east to Cowichan Lake and the western claims are drained by Jasper Creek.

The claims were once heavily tree covered but are now largely logged.

### GENERAL GEOLOGY

The Cowichan-Alberni area of Vancouver Island is underlain by the Vancouver Group of Triassic age underlain by Permian volcanic and sedimentary rocks. They are overlain unconformably by Cretaceous Nanaimo Group sediments.

STRATIGRAPHIC SECTION - VANCOUVER GROUP

Triassic

Bonanza

1000' Porphyritic volcanics  
100' Hematitic porphyritic volcanics  
100' Limy Tuffs  
500' Cherty agglomerates  
100' Tuffs  
500' Argillites with limestone and basalt  
100' Tuffs - Hematitic in part

Quatsino (Sutton)

200' Grey Limestone  
60' Coral Limestone  
90' Grey Limestone  
50' Fine Grained Limestone

Karmutsen (Franklin)

200' Amygdaloidal basalt  
100' Hematitic tuff (red beds)  
150' Andesitic tuff  
200' Amygdaloidal basalt  
200' Limy tuffs - limestone  
200' Amygdaloidal basalt  
110' Tuffs - agglomerate  
500' Basalt  
200' Basalt black pillow lavas  
200' Agglomerate  
1000' Basalt black pillow lavas

Permian

500' Limestone - Limy Chert  
300' Purple volcanic breccia  
1300' Green tuffaceous greywache  
250' Amygdaloidal basalt  
1000' Tuffaceous greywache  
800' Black feldspathic tuffs thin limestone beds  
600' Thin bedded cherty tuffs  
3000' Massive green volcanics and clastic sediments

The series is folded along northwest trending axes and extensively faulted by a system of northwest, northeast, east and north striking faults both reverse and normal with near vertical to near horizontal planes.

The rocks are overlain unconformably by Cretaceous sediments and intruded by the Beale Diorite, the Jurassic Cretaceous Coast Range granodiorites and by Tertiary feldspar porphyry plugs and dike swarms and possibly by older feldspar porphyries. Tertiary granites occur to the southwest of the general area.

#### CLAIM GEOLOGY

A series of open folds with northwest striking axes plunging 30 degrees north occur in Vancouver Group rocks on the claims. A series of prominent fractures striking north, north 70 west and north 45 east disrupt them in an unknown manner. A major Coast Range batholyth occurs near the Alberni Canal and fingers out in dikes in the northern claim area. A second batholyth truncates the Vancouver Group rocks south of the claims along the Caycuse River. Feldspar porphyry dikes and small bodies occur throughout the claims and large mineralized feldspar porphyries outcrop on the northern and southwestern parts of the group.

A caldera complex occurs on the southwest section of the claim group with gabbros intruding the sediments and volcanics through several hundred feet of strata both below and above the limestone horizon. Basaltic bomb agglomerates and extensive beds of hematitic tuff occur in an area



several miles in diameter interbedded with Quatsino, Bonanza and Karmutsen rocks. Three intrusions of gabbro have been mapped but petrographic studies now underway and further mapping in detail are required to completely outline the intrusives, with their associated breccia pipes, dikes and flows and to differentiate them from the normal Karmutsen basalts.

A thick section of upper Bonanza Series volcanics outcrop on the central and northeastern claims and an assemblage of Karmutsen rocks cover the southwestern part of the property. A remnant of Cretaceous conglomerates outcrop near Texas Creek.

#### Mineralization

The alteration and mineralization is more fully covered in the description of the results of the work in this report. A taconite and skarn deposit with layered sulphides occurs on the nose of a plunging anticline on a dip slope west of Granite Creek, a porphyry copper deposit occurs east of Granite Creek, a porphyry pyrite deposit occurs on 7 Mile Creek near the Caycuse River and a number of complex deposits are found on Camp and Nixon Creeks. Pyrite is the most common mineral found but some chalcopyrite and molybdenum were located.

## GEOCHEMICAL SURVEY

### SURVEY

Between May 7th and September 17th the area was soil sampled on lines about 2000 feet apart taken along logging roads which cover most of the claim area. These lines were augmented by a base line run north through the claims and some lines were run on a coordinate system. It was generally found to be more convenient to sample along logging roads. These roads were surveyed using a Brunton compass and a 200 foot nylon chain and samples were taken at 200 foot intervals along them. When the interval between logging roads was over 2000 feet a series of north south or east west lines were surveyed using chain and compass and tied into the coordinate system. Samples were again taken at 200 foot intervals.

All lines were plotted on a 1" = 1000 feet topographical map compiled from British Columbia Survey Branch maps on a scale of 1" = 500 feet of the Nitinat and Cowichan Lake watersheds, from Department of Lands maps on a scale of 1" = 1320 feet and from logging company surveys of their timber limits. The claim posts were tied in to the compass and chain survey lines as they were located.

### SAMPLING

At each station a 4 oz sample was taken from the B soil horizon 10" to 18" below the surface beneath the humus layer. A 1 inch by 2 foot soil auger or a mattock was used. The samples were placed in a paper soil envelope, marked for identification and shipped to the laboratory for assaying. The soils were a very uniform sandy loam except in outcrop areas.

### ASSAYING

The samples were run by Seymour Laboratories Limited for total copper and total molybdenum as described in the appendix.

### RESULTS OF SURVEYS

Marked geochemical anomalies over a background of 50 parts per million copper and 2 parts per million molybdenum occur and these can be related to the mineralization and geology as follows:

- A. On the northwest over Av and Tana claims an anticline in the limestones and overlying volcanics plunges northwest and the rock layering parallels a topographic spur. These rocks are intruded by feldspar porphyry dikes striking north to northwest.

A geochemical anomaly 100 to 200 parts per million copper, 1000 feet to 2000 feet in width follows the upper part of a limestone band and part of the overlying argillites, red beds, tuffs and agglomerates. The anomalous area is horse-shoe shaped corresponding to the surface outcrop of the limestones over a length of 10,000 feet.

Within this anomalous envelope peaks of 600 to 750 parts per million copper are found. Outcrops and old workings show copper and magnetite mineralization as follows:

1. On Tenas Creek an area 2000 feet by 1000 feet is underlain by limestone, chert and agglomerates. Disseminated pyrite and

chalcopyrite occur in the volcanics and skarn zones occur in limestone near feldspar porphyry dikes. One Xray drill hole is reported to show 20 feet of 1% copper in volcanics and limestone. Two trenches 100 feet apart expose a 2<sup>1</sup>/<sub>2</sub> foot thick bedded chalcopyrite pyrite deposit underlain by magnetite. These average 8% copper over a 2<sup>1</sup>/<sub>2</sub> foot thickness.

2. On the flats below the Granite Creek road disseminated chalcopyrite, bornite and pyrite occur in an outcrop in the general flat area. Two small trenches assay 0.7% copper.
3. West of Granite Creek the original Gillespie prospect is a magnetite-chalcopyrite skarn zone in limestone and it has been explored by two short tunnels and by pits. The mineralization is erratic but one pit showed 4% copper over a 5 foot width.

A second skarn zone 100 feet south showed 5 feet of 4.6% copper and 18 feet of disseminated copper in limestones.

4. On the Granite Creek road skarn zones show chalcopyrite and magnetite in two pits. Values are erratic but high in copper values.

B. East of Granite Creek a gossan zone underlain by a quartz feldspar porphyry plug 10,000 feet in length and 1000 to 1500 feet in width is heavily pyritized. The porphyry intrudes limestone and Bonanza Group andesites and agglomerates.

These are also intruded, near Granite Creek, by a large granodiorite dike which is connected with the Alberni batholyth north of the Nitinat River.

The mineralization in these rock types is interconnected but all of them show pyrite and in places chalcopyrite. The geochemical survey reflected this with a number of anomalies as follows:

1. In the feldspar porphyry the surface rocks contain much pyrite and only traces of copper and molybdenum. The geochemical survey reflects the lack of copper in it but shows nine small anomalous areas with a peak on one of them of 1280 parts per million copper. These anomalies could be significant if the gossan conceals a buried porphyry copper deposit.
2. Around the contacts of the porphyry there are a number of copper occurrences and geochemical anomalies. There is a north trending anomaly on the north west contact 4000 feet long and 200 to 400 feet wide with a peak value of 500 parts per million copper. One trench in it showed 5 feet of 3.5% copper from sulphide stringers in fracture zones in andesites. The sulphides were pyrrhotite, chalcopyrite and pyrite.
3. Along the Main Haul road, in granodiorite, limestones and volcanics, several mineral deposits occur and an anomaly 6000 feet long and 2000 feet wide has a peak value of 2600 parts per million copper. Assays of mineralized outcrops showed 0.485% Cu Trace Mo and 1.15% copper Trace Mo. Both outcrops showed trace gold and 0.3 oz Silver/ton. The samples were across 4 and 5 foot widths respectively.

4. On the Nitinat River along the granodiorite contact a small anomaly 800 feet in length with a peak of 130 parts per million copper is along the extension of a good grade limestone skarn zone exposed in the river bank. In the area overlying, red beds show disseminated sulphides.

C. On the southwestern claim block the geology is more complex and the alteration and mineralization spreads over very large areas. This is reflected in the geochemical results.

1. West of 7 Mile Creek, a south flowing tributary of the Caycuse River, a large gossan zone covers a feldspar porphyry and extends to the contact of the Caycuse granodiorite batholyth. The rocks are well exposed and show extensive pyritization but no copper or molybdenum was found in them. The geochemical survey showed two small anomalous areas with peaks of 340 and 140 parts per million copper. The molybdenum values were uniformly low. The area is evidently a barren or pyritic porphyry deposit.

North of this plug a series of quartz feldspar porphyry dikes intrude hematitic agglomerates which are mineralized with chalcopyrite, sphalerite and pyrite for a few feet from the contacts. This is reflected in the soil survey but copper and zinc values over narrow widths are low.

D. On the southeastern claims the area is underlain by a northwest striking syncline in limestones and volcanics complicated by intrusives. The geology is not fully understood.

1. East of Wilson Creek an area of limestones, red beds, argillites, basaltic bomb agglomerates, basalts and gabbros outcrop. In the field it is difficult to distinguish between the gabbros and basalts and, except in a general way, the bedded rocks cannot be projected between outcrops as they are erosional remnants or huge breccia fragments.

The writer believes the structure may be a gabbro volcanic neck or breccia which was the pipe source of the erratic areas of bomb agglomerates found interbedded with hematitic tuffs and limestones. The geochemical survey shows a large low anomaly in the area with a peak value of 260 parts per million copper. The prospecting in the area was hampered by surface oxidization but some low grade copper was found in gabbro outcrops.

2. At the headwaters of Camp and Nixon Creeks a similar area of complicated geology was found with a very large geochemical envelope and peripheral unique structures.

A breccia pipe several hundred feet in diameter in limestones, gabbro and tuffs is highly oxidized on the surface but contains very fine grained chalcopryrite disseminated in the rock. The geochemical anomaly shows a maximum of 530 parts per million copper and 48 parts per million molybdenum.

An area of relatively undisturbed limestones and red beds, on the Nixon Creek headwaters is intruded by sills and dikes of a peculiar porphyry rock composed almost entirely of feldspar phenocrysts. The rocks are impregnated with pyrite and show chalcopryrite and molybdenite. The geochemical

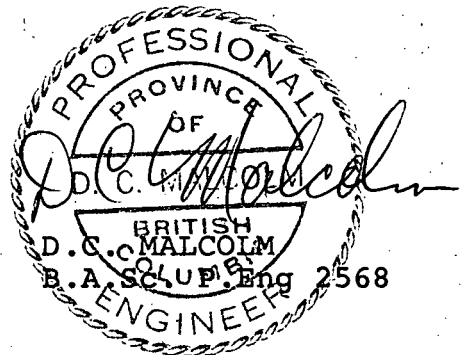
anomaly follows the layered rock contacts and has a peak value of 1000 parts per million copper and 180 parts per million molybdenum.

A third area of bomb agglomerates, limestones, gabbros and hematitic tuffs outcrops near the southeastern corner of the claim group on Camp Creek. It is further complicated by its proximity to the Caycuse batholyth contact and by east and northeast striking faults and granodiorite and feldspar porphyry intrusives. The geochemical results showed 100 to 200 parts per million copper over an area 2 miles in length and 1 mile in width with an irregular internal area up to a mile in length and 2000 feet in width with copper values over 200 parts per million and peak values up to 400 parts per million. Prospecting disclosed very widespread low copper values in the rocks but no concentrations. The work was difficult due to shallow surface leaching up to a foot in depth on exposed rock faces and other areas of heavier leaching and overburden.

CONCLUSION

The claim group is large and covers a number of extensive copper deposits well outlined in the geochemical and geological work. They cover two porphyry deposits of appreciable size, a very large caldera complex and an extensive taconite area of layered sulphides and magnetite. Each of these require further detailed geological and exploration work.

October, 1969





APPENDIX 1

CLAIMS

TANA CLAIMS

<u>Claim No.</u>	<u>Record No.</u>	<u>Record Date</u>	<u>Expiry Date</u>
Tana #501	15066	Apr. 15/69	Apr. 15/70
" 502	" 67	"	"
" 503	" 68	"	"
" 504	" 69	"	"
" 505	" 70	"	"
" 506	" 71	"	"
" 507	" 72	"	"
" 508	" 73	"	"
" 509	" 74	"	"
" 510	" 75	"	"
" 511	" 76	"	"
" 512	" 77	"	"
" 513	" 78	"	"
" 514	" 79	"	"
" 515	" 80	"	"
" 516	" 81	"	"
" 517	" 82	"	"
" 518	" 83	"	"
" 519	" 84	Apr. 14/69	Apr. 14/70
" 520	" 85	"	"
" 521	" 86	"	"
" 522	" 87	"	"
" 523	" 88	"	"
" 524	" 89	"	"
" 525	" 90	"	"
" 526	" 91	"	"
" 527	" 92	"	"
" 528	" 93	"	"
" 529	" 94	"	"
" 530	" 95	"	"
" 531	" 96	"	"
" 532	" 97	"	"
" 533	" 98	"	"
" 534	" 99	"	"
" 535	15100	"	"
" 536	" 01	"	"
" 537	" 02	"	"
" 538	" 03	"	"
" 539	" 04	"	"
" 540	" 05	"	"
" 541	" 06	"	"
" 542	" 07	"	"
" 543	" 08	"	"
" 544	" 09	"	"
" 545	" 10	"	"

Tana #	546	15111	Apr. 14/69	Apr. 14/70
"	547	" 12	"	"
"	548	" 13	"	"
"	549	" 14	"	"
"	550	" 15	"	"
"	551	" 16	"	"
"	552	" 17	"	"
"	553	" 18	"	"
"	554	" 19	"	"
"	555	" 20	"	"
"	556	" 21	"	"
"	557	" 22	"	"
"	558	" 23	"	"
"	559	" 24	"	"
"	560	" 25	"	"
"	561	" 26	"	"
"	562	" 27	"	"
"	591	" 28	"	"
"	592	" 29	"	"
"	601	" 30	"	"
"	602	" 31	"	"
"	603	" 32	"	"
"	604	" 33	"	"
"	605	" 34	"	"
"	606	" 35	"	"
"	607	" 36	"	"
"	608	" 37	"	"
"	609	" 38	"	"
"	610	" 39	"	"
"	611	" 40	"	"
"	612	" 41	"	"
"	621	" 42	"	"
"	622	" 43	"	"
"	623	" 44	"	"
"	624	" 45	"	"
"	625	" 46	"	"
"	626	" 47	"	"
"	627	" 48	"	"
"	628	" 49	"	"
"	629	" 50	"	"
"	630	" 51	"	"
"	631	" 52	"	"
"	632	" 53	"	"
"	633	15323	Apr. 18/69	Apr. 18/70
"	634	" 24	"	"
"	635	" 25	"	"
"	636	" 26	"	"
"	637	" 27	"	"
"	638	" 28	"	"
"	639	" 29	"	"
"	640	" 30	"	"
"	641	" 31	"	"
"	642	" 32	"	"
"	643	" 33	"	"

Tana #	644	15334	Apr. 18/69	Apr. 18/70
"	645	" 35	"	"
"	646	" 36	"	"
"	647	" 37	"	"
"	648	" 38	"	"
"	649	" 39	"	"
"	650	" 40	"	"
"	651	" 41	"	"
"	652	" 42	"	"
"	653	" 43	"	"
"	654	" 44	"	"
"	655	" 45	"	"
"	656	" 46	"	"
"	657	" 47	"	"
"	658	" 48	"	"
"	659	" 49	"	"
"	660	" 50	"	"
"	665	15154	Apr. 14/69	Apr. 14/70
"	666	" 55	"	"
"	667	" 56	"	"
"	668	" 57	"	"
"	669	" 58	"	"
"	670	" 59	"	"
"	671	" 60	"	"
"	672	" 61	"	"
"	673	" 62	"	"
"	674	" 63	"	"
"	675	15351	Apr. 18/69	Apr. 18/70
"	676	" 52	"	"
"	677	" 53	"	"
"	678	" 54	"	"
"	679	" 55	"	"
"	680	" 56	"	"
"	681	" 57	"	"
"	682	" 58	"	"
"	683	" 59	"	"
"	684	" 60	"	"
"	685	" 61	"	"
"	686	" 62	"	"
"	689	" 63	"	"
"	690	" 64	"	"
"	691	" 65	"	"
"	692	" 66	"	"
"	701	14956	Apr. 9/69	Apr. 9/70
"	702	" 57	"	"
"	703	" 58	"	"
"	704	" 59	"	"
"	705	" 60	"	"
"	706	" 61	"	"
"	707	" 62	"	"
"	708	" 63	"	"
"	709	" 64	"	"
"	710	" 65	"	"

Tana #	711	14966	Apr. 9/69	Apr. 9/70
"	712	" 67	"	"
"	713	15164	Apr. 11/69	Apr. 11/70
"	714	" 65	"	"
"	715	" 66	"	"
"	716	" 67	"	"
"	717	" 68	"	"
"	718	" 69	"	"
"	719	" 70	"	"
"	720	" 71	"	"
"	721	" 72	"	"
"	722	" 73	"	"
"	723	" 74	"	"
"	724	" 75	"	"
"	725	" 76	"	"
"	726	" 77	"	"
"	727	" 78	"	"
"	728	" 79	"	"
"	731	" 80	"	"
"	732	" 81	"	"
"	733	" 82	"	"
"	734	" 83	"	"
"	735	" 84	"	"
"	736	" 85	"	"
"	737	" 86	"	"
"	738	" 87	"	"
"	739	" 88	"	"
"	740	" 89	"	"
"	743	" 90	"	"
"	744	" 91	"	"
"	745	" 92	"	"
"	746	" 93	"	"
"	747	" 94	"	"
"	748	" 95	"	"
"	752	" 96	"	"
"	753	" 97	"	"
"	754	" 98	"	"
"	755	" 99	"	"
"	756	15200	"	"
"	757	" 01	"	"
"	758	" 02	"	"
"	759	" 03	"	"
"	760	" 04	"	"
"	761	" 05	"	"
"	762	" 06	"	"
"	763	" 07	"	"
"	764	" 08	"	"
"	765	" 09	"	"
"	766	" 10	"	"
"	767	" 11	"	"
"	768	" 12	"	"
"	769	" 13	"	"
"	770	" 14	"	"

Tana #			Apr. 11/69	Apr. 11/70
771	15215			
"	772	" 16	"	"
"	773	" 17	"	"
"	774	" 18	"	"
"	775	" 19	"	"
"	776	" 20	"	"
"	777	" 21	"	"
"	778	" 22	"	"
"	779	" 23	"	"
"	780	" 24	"	"
"	781	" 25	"	"
"	782	" 26	"	"
"	783	" 27	"	"
"	784	" 28	"	"
"	785	" 29	"	"
"	786	" 30	"	"
"	787	" 31	"	"
"	788	" 32	"	"
"	789	" 33	"	"
"	790	" 34	"	"
"	791	" 35	"	"
"	792	" 36	"	"
"	793	" 37	"	"
"	794	" 38	"	"
"	797	" 39	"	"
"	798	" 40	"	"
"	799	" 41	"	"
"	800	" 42	"	"
"	801	14968	Apr. 9/69	Apr. 9/70
"	802	" 69	"	"
"	803	" 70	"	"
"	804	" 71	"	"
"	805	" 72	"	"
"	806	" 73	"	"
"	807	" 74	"	"
"	808	" 75	"	"
"	809	" 76	"	"
"	810	" 77	"	"
"	811	" 78	"	"
"	812	" 79	"	"
"	813	" 80	"	"
"	814	" 81	"	"
"	815	" 82	"	"
"	816	" 83	"	"
"	817	" 84	"	"
"	818	" 85	"	"
"	819	" 86	"	"
"	820	" 87	"	"
"	821	" 88	"	"
"	822	" 89	"	"
"	823	" 90	"	"
"	824	" 91	"	"
"	825	" 92	"	"
"	826	" 93	"	"

Tana #	827	15243	Apr. 11/69	Apr. 11/70
"	828	" 44	"	"
"	829	" 45	"	"
"	830	" 46	"	"
"	831	" 47	"	"
"	832	" 48	"	"
"	833	" 49	"	"
"	834	" 50	"	"
"	835	" 51	"	"
"	836	" 52	"	"
"	837	" 53	"	"
"	838	" 54	"	"
"	839	" 55	"	"
"	840	" 56	"	"
"	841	" 57	"	"
"	842	" 58	"	"
"	843	" 59	"	"
"	844	" 60	"	"
"	845	" 61	"	"
"	846	" 62	"	"
"	847	" 63	"	"
"	848	" 64	"	"
"	849	" 65	"	"
"	850	" 66	"	"
"	851	" 67	"	"
"	852	" 68	"	"
"	853	" 69	"	"
"	854	" 70	"	"
"	855	" 71	"	"
"	856	" 72	"	"
"	857	" 73	"	"
"	858	" 74	"	"
"	859	" 75	"	"
"	860	" 76	"	"
"	861	" 77	"	"
"	862	" 78	"	"
"	863	" 79	"	"
"	864	" 80	"	"
"	865	" 81	"	"
"	866	" 82	"	"
"	867	" 83	"	"
"	868	" 84	"	"
"	869	" 85	"	"
"	870	" 86	"	"
"	871	" 87	"	"
"	872	" 88	"	"
"	873	" 89	"	"
"	874	" 90	"	"
"	875	" 91	"	"
"	876	" 92	"	"
"	877	" 93	"	"
"	878	" 94	"	"
"	879	" 95	"	"
"	880	" 96	"	"

Tana #				
881	15297	Apr. 14/69	Apr. 14/70	
"	882 15298	"	"	
"	883 15299	"	"	
"	884 15300	"	"	
"	885 " 01	"	"	
"	886 " 02	"	"	
"	887 " 03	"	"	
"	888 " 04	"	"	
"	889 " 05	"	"	
"	890 " 06	"	"	
"	891 " 07	Apr. 11/69	Apr. 11/70	
"	892 " 08	"	"	
"	893 " 09	Apr. 14/69	Apr. 14/70	
"	894 " 10	"	"	
"	895 " 11	"	"	
"	896 " 12	"	"	
"	897 " 13	"	"	
"	898 " 14	"	"	
"	899 " 15	"	"	
"	900 " 16	"	"	
"	901 15447	May 21/69	May 21/70	
"	902 " 48	"	"	
"	903 " 49	"	"	
"	904 " 50	"	"	
"	905 " 51	"	"	
"	906 " 52	"	"	
"	907 " 53	"	"	
"	908 " 54	"	"	
"	909 " 55	"	"	
"	910 " 56	"	"	
"	911 " 57	"	"	
"	912 " 58	"	"	
"	913 " 59	"	"	
"	914 " 60	"	"	
"	915 " 61	"	"	
"	916 " 62	"	"	
"	918 Fr. " 63	"	"	
"	919 Fr. " 64	"	"	
"	921 " 65	"	"	
"	922 " 66	"	"	
"	923 Fr. " 67	"	"	
"	924 Fr. " 68	"	"	
"	925 " 69	"	"	
"	926 " 70	"	"	
"	927 " 71	"	"	
"	928 " 72	"	"	
"	929 " 73	"	"	
"	930 " 74	"	"	
"	931 " 75	"	"	
"	932 " 76	"	"	
"	933 " 77	"	"	
"	934 " 78	"	"	
"	935 " 79	"	"	
"	936 " 80	"	"	
"	937 Fr. " 81	"	"	



Tana #	Fr.		May 21/69	May 21/70
938	Fr.	15482		
"	939	" 83	"	"
"	940	" 84	"	"
"	943	" 85	"	"
"	944	" 86	"	"
"	945	" 87	"	"
"	946	" 88	"	"
"	947	" 89	"	"
"	948	" 90	"	"
"	949 Fr.	" 91	"	"
"	950	" 92	"	"
"	951	" 93	"	"
"	952 Fr.	" 94	"	"
"	953 Fr.	" 95	"	"
"	954 Fr.	" 96	"	"
"	1	15567	June 5/69	June 5/70
"	2	" 68	"	"
"	3	" 69	"	"
"	4	" 70	"	"
"	5	" 71	"	"
"	6	" 72	"	"
"	7	" 73	"	"
"	8	" 74	"	"
"	9	" 75	"	"
"	10	" 76	"	"
"	11	" 77	"	"
"	12	" 78	"	"
"	13	" 79	"	"
"	14	" 80	"	"
"	15	" 81	"	"
"	16	" 82	"	"
"	17	" 93	June 9/69	June 9/70
"	18	" 94	"	"
"	19	" 95	"	"
"	20	" 96	"	"
"	21	15772	July 18/69	July 18/70
"	22	" 73	"	"
"	23	" 74	"	"
"	24	" 75	"	"
"	25	" 76	"	"
"	26	" 77	"	"
"	27	" 78	"	"
"	28	" 79	"	"
"	29	" 80	"	"
"	30	" 81	"	"
"	31	" 82	"	"
"	32	" 83	"	"
"	33	" 84	"	"
"	34	" 85	"	"
"	35	" 86	"	"
"	36	" 87	"	"
"	37	" 88	"	"
"	38	" 89	"	"
"	39	" 90	"	"
"	40	" 91	"	"

Tana #	41	15792	July 18/69	July 18/70
"	42	" 93	"	"
"	43	" 94	"	"
"	44	" 95	"	"
"	45	" 96	"	"
"	46	" 97	"	"
"	47	" 98	"	"
"	50	15641	June 16/69	June 16/70
"	51	" 54	June 23/69	June 23/70
"	52 Fr.	" 55	"	"
"	53 Fr.Fr.	16158	Sept. 2/69	Sept. 2/69
"	54 Fr.Fr.	" 59	"	"
"	55 Fr.	" 60	"	"
"	56 Fr.	" 61	"	"
"	57 Fr.	" 62	"	"
"	58	" 63	"	"
"	59	" 64	"	"
"	60 Fr.Fr.	" 65	"	"
"	61 Fr.Fr.	" 66	"	"
"	62 Fr.	" 67	"	"

TAN CLAIMS

<u>Claim No.</u>	<u>Record No.</u>	<u>Record Date</u>	<u>Expiry Date</u>
Tan # 5	15597	June 16/69	June 16/70
" 6	" 98	"	"
" 7	" 99	"	"
" 8	15600	"	"
" 9	" 01	"	"
" 10	" 02	"	"
" 11	" 03	"	"
" 12	" 04	"	"
" 13	" 05	"	"
" 14	" 06	"	"
" 15	" 07	"	"
" 16	" 08	"	"
" 17	" 09	"	"
" 18	" 10	"	"
" 19	" 11	"	"
" 20	" 12	"	"
" 21	" 13	"	"
" 22	" 14	"	"
" 45	" 56	June 23/69	June 23/70
" 47	" 15	June 16/69	June 16/70
" 48	" 16	"	"
" 49	" 17	"	"
" 50	" 18	"	"
" 51	" 19	"	"
" 52	" 20	"	"
" 53	" 21	"	"
" 54	" 22	"	"
" 55	" 23	"	"
" 56	" 24	"	"
" 57	" 25	"	"
" 58	" 26	"	"
" 59 Fr.	" 57	June 23/69	June 23/70
" 60 Fr.	" 58	"	"
" 61	" 27	June 16/69	June 16/70
" 62	" 28	"	"
" 63	" 29	"	"
" 64	" 30	"	"
" 65	" 31	"	"
" 66	" 32	"	"
" 67	" 33	"	"
" 68	" 34	"	"
" 69	" 35	"	"
" 70	" 36	"	"
" 71	" 37	"	"
" 72	" 38	"	"
" 73	" 39	"	"
" 74	" 40	"	"

Tan #	75	15659	June 23/69	June 23/70
"	76	" 60	"	"
"	77	" 61	"	"
"	78	" 62	"	"
"	79	" 63	"	"
"	80	" 64	"	"
"	82	" 65	"	"
"	83	15799	July 18/69	July 18/70
"	84	15800	"	"
"	85	" 01	"	"
"	86	" 02	"	"

AV CLAIMS

<u>Claim No.</u>	<u>Record No.</u>	<u>Record Date</u>	<u>Expiry Date</u>
Av # 1	14740	Dec. 5/68	Dec. 5/69
" 2	" 41	"	"
" 3	" 42	"	"
" 4	" 43	"	"
" 5	" 44	"	"
" 6	" 45	"	"
" 7	" 46	"	"
" 8	" 47	"	"
" 9	" 48	"	"
" 10	" 49	"	"
" 11	" 50	"	"
" 12	" 51	"	"
" 13	" 52	"	"
" 14	" 53	"	"
" 15	" 54	"	"
" 16	" 55	"	"
" 17	" 56	"	"
" 18	" 57	"	"
" 19	" 58	"	"
" 20	" 59	"	"

GATE CLAIMS

<u>Claim No.</u>	<u>Record No.</u>	<u>Record Date</u>	<u>Expiry Date</u>
Gate # 1	14760	Dec. 5/68	Dec. 5/69
" 2	" 61	"	"
" 3	" 62	"	"
" 4	" 63	"	"
" 5	" 64	"	"
" 6	" 65	"	"
" 7	" 66	"	"
" 8	" 67	"	"
" 9	" 68	"	"
" 10	" 69	"	"
" 11	" 70	"	"
" 12	" 71	"	"

OGM CLAIMS

<u>Claim No.</u>	<u>Record No.</u>	<u>Record Date</u>	<u>Expiry Date</u>
OGM #143B	9212	Oct. 2/69	Oct. 2/70
144B	9213	"	"

APPENDIX 11

ACCOUNTING STATEMENT



ACCOUNTING STATEMENT

EXPENDITURE FOR WAGES AND SALARIES

<u>Name</u>	<u>Period of Work</u>		<u>No. Days</u>	<u>Daily</u>	<u>Total Amount</u>
	<u>From</u>	<u>To</u>	<u>Worked</u>	<u>Rate</u>	<u>Paid</u>
D.C. Malcolm	3. 1.69	10.15.69	120	\$100.00	\$12,000.00
D.W. Milburn	3.15.69	10.15.69	39	\$1700/ month	\$ 2,686.15
T. Gordon	4. 6.69	4.25.69	5 <sup>1</sup> / <sub>2</sub>	\$ 75.00	\$ 412.50
D. Taylor	5. 7.69	9. 5.69	120	\$ 35.00	\$ 4,200.00
Dave Malcolm	5. 7.69	8.22.69	93	\$ 35.00	\$ 3,255.00
B. Drummond-Hay	5.30.69	9.19.69	105	\$ 25.00	\$ 2,625.00
G. McLaren	5.30.69	8.22.69	81	\$ 25.00	\$ 2,025.00
Don Malcolm	5.30.69	5.31.69	2	\$ 25.00	\$ 50.00
	6. 1.69	9.20.69	101	\$ 30.00	\$ 3,030.00
P. Rossiter	6.11.69	7.27.69	43	\$ 25.00	\$ 1,075.00
E. Millidge	8. 1.69	8.31.69	13	\$ 25.00	\$ 325.00
P. England	8.22.69	9.28.69	36	\$ 25.00	\$ 900.00

TOTAL      \$32,583.65

STATEMENT OF EXPENDITURES ON PORT RENFREW PROJECT  
1969 SEASON

PAYROLL:

Wages and Salaries \$32,583.65  
W.C.B., C.C.P., U.I.C. and benefits 2,684.63

EQUIPMENT

Camp building supplies 7,680.37  
Camp maintainance (groceries, etc.) 3,342.61

TRANSPORTATION

Vehicle rental & maintainance 3,439.41  
Air fares for consultants 130.00

HELICOPTER CHARTER

Vancouver Island Helicopters -  
for consultants 1,943.05

ASSAYING

Seymour Laboratories Ltd. 9,694.92

DRAFTING

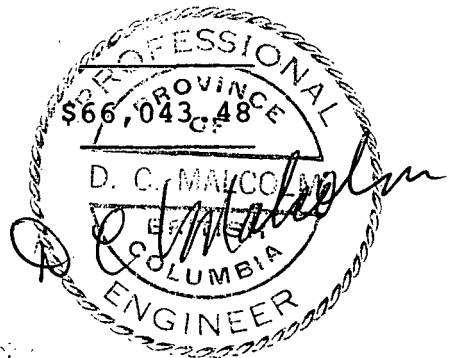
Reproduction, supplies, etc. 4,406.06

TELEPHONE

Communications on property 138.78

Declared before me at the City  
of Vancouver, in the  
Province of British Columbia, this 3  
day of December 1969.

TOTAL



Neil Gunn  
A Commissioner for the Province of British Columbia or  
Sub-mining Recorder

**SEYMOUR LABORATORY LTD.**

147 RIVERSIDE DRIVE, NORTH VANCOUVER, B.C., CANADA

TELEPHONE (604) 929-2228

September 30, 1969

To: Mr. D. Malcolm  
Quintana Minerals Corp.  
Ste. 1215 - Royal Trust Tower  
2 Bentall Centre  
Vancouver 1, B.C.

From: P. Rossbacher, Geochemist  
Seymour Laboratory Ltd.

Subject: Method Of Analysis Of Geochemical Samples.

Dear Sir:

The following outlines the method used by Seymour Laboratory Ltd., in the analysis of geochemical samples for copper and molybdenum:-

- 1 - Samples are oven dried and screened to pass 80 mesh.
- 2 - 0.3 grams of the minus 80 mesh fraction is weighed into a test-tube and digested with acids for 3 hrs.
- 3 - 1 ml. of  $AlCl_3$  solution is added, and the sample extract diluted to volume.
- 4 - After settling, the clear solution is analyzed for copper/molybdenum by Atomic Absorption Spectroscopy, which involves comparison of the copper/molybdenum content of sample to the copper/molybdenum of known standards.

The Atomic Absorption Unit used by Seymour Laboratory, is a Jarrell Ash Maximum Versatility A.A. Spectrometer.

I trust this information is sufficient.

Yours truly,

SEYMOUR LABORATORY LTD.



P. Rossbacher, Geochemist

PB/mv

APPENDIX 111

ASSAY FORMS

SEYMOUR LABORATORY LTD.

147 Riverside Drive, North Vancouver, B.C. Tel. (604) 929-2228

Nº 448

CERTIFICATE OF ANALYSIS

TO QUINTANA MINERALS CORPORATION  
 #1215 ROYAL TRUST TOWER  
 2 BENTALL CENTRE  
 VANCOUVER 1, B.C.  
 Attn: Mr. D. Millburn

TYPE OF SAMPLES ROCK  
 No. of SAMPLES 2  
 FILE No. 448 Our Inv. 1196  
 Re: Port Renfrew

SAMPLE No.	OZ. PER TON GOLD	OZ. PER TON SILVER	% Cu	% MoS <sub>2</sub>	%	%			
3358			0.030	0.005					
3359			0.056	tr					

*J. Clatter*

DCM.

SEYMOUR LABORATORY LTD.

147 Riverside Drive, North Vancouver, B.C. Tel. (604) 929-2228

Nº 429

CERTIFICATE OF ANALYSIS

TO QUINTANA MINERALS CORPORATION  
STE. 1215 Royal Trust Tower  
2 Bentall Centre  
VANCOUVER 1, B.C.

TYPE OF SAMPLES ROCK  
No. of SAMPLES 8  
FILE No. 429 Our Inv. 1165

SAMPLE No.	OZ. PER TON GOLD	OZ. PER TON SILVER	% Cu	% Mo	%	%			
512	tr	0.3	0.485	tr					
513	tr	0.3	1.15	tr					
514			0.025	tr					
515			0.025	tr					
516			0.005	tr					
517			0.070	tr					
3356			0.030	tr					
3357			0.030	tr					

*J. Chatter*

PROVINCIAL ASSAYER

DATE AUGUST 5, 1969

SEYMOUR LABORATORY LTD.

147 Riverside Drive, North Vancouver, B.C. Tel. (604) 929-2228

No 397

CERTIFICATE OF ANALYSIS

TO QUINTANA MINERALS CORPORATION  
 STE. 1215 - ROYAL TRUST TOWER  
 2 BENTALL CENTRE  
 VANCOUVER 1 B.C.

TYPE OF SAMPLES ROCK

No. of SAMPLES 5

FILE No. 397 Our inv. 1136

Attn: Mr. D. Millburn

Re: Port Renfrew

SAMPLE No.	OZ. PER TON GOLD	OZ. PER TON SILVER	% Cu	%	% Mo	%			
3351			0.005		tr				
3352			tr		tr				
3353			tr		tr				
3354			0.040		tr				
3355			0.015		tr				

*Dark Mo. calc.*

*J. C. Rastorfer*

PROVINCIAL ASSAYER

DATE JULY 25, 1969

SEYMOUR LABORATORY LTD.

147 Riverside Drive, North Vancouver, B.C. Tel. (604) 929-2228

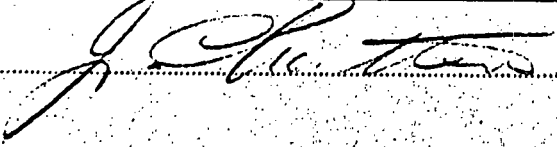
Nº 353

CERTIFICATE OF ANALYSIS

TO QUINTANA MINERALS CORPORATION  
 STE. 1215 - ROYAL TRUST TOWER  
 2 BENTALL CENTRE  
 VANCOUVER 1, B.C.  
 Attn: Mr. D. Millburn

TYPE OF SAMPLES 2 ROCK  
 No. of SAMPLES 2  
 FILE No. 353 Our Inv. 1110  
 (RENFREW PROJECT)

SAMPLE No.	OZ. PER TON GOLD	OZ. PER TON SILVER	Cu	%	Mo%	%			
510			0.002		tr				
511			0.005		tr				

Form SL 4  PROVINCIAL ASSAYER DATE JULY 18, 1969



SEYMOUR LABORATORY LTD.

147 Riverside Drive, North Vancouver, B.C. Tel. (604) 929-2228

Nº 249

CERTIFICATE OF ANALYSIS

TO QUINTANA MINERALS CORPORATION  
STE. 1215 ROYAL TRUST TOWER  
2 BENTALL CENTRE  
VANCOUVER 1, B'C.

TYPE OF SAMPLES ROCK

No. of SAMPLES 1

FILE No. 249

SAMPLE No.	OZ. PER TON GOLD	OZ. PER TON SILVER	% Cu	%	%	%			
506			0.035						

*J. Chatter*

PROVINCIAL ASSAYER

DATE MAY 15, 1969

SEYMOUR LABORATORY LTD.

147 Riverside Drive, North Vancouver, B.C. Tel. (604) 929-2228

Nº 263

CERTIFICATE OF ANALYSIS

TO QUINTANA MINERALS CORPORATION  
 STE. 1215 - ROYAL TRUST TOWER  
 2 BENTALL CENTRE  
 VANCOUVER 1, B.C.

TYPE OF SAMPLES SOIL  
 No. of SAMPLES 432  
 FILE No. 263 (Page #1 of 5)

SAMPLE No.	OZ. PER TON GOLD	OZ. PER TON SILVER	Cu% PPM	Mo% PPM	%	SAMPLE NO.	Cu% PPM	Mo% PPM
A 1			120	2		A. 36	155	2
2			60	tr		" 37	100	7
3			140	7		" 38	170	2
4			165	5		" 39	145	5
5			115	2		" 40	100	2
6			255	5		" 41	60	tr
7			100	5		" 42	95	2
8			130	2		" 43	105	5
9			110	5		" 44	80	5
10			155	7		" 45	105	2
11			36	2		" 46	65	5
12			65	2		" 47	40	5
13			65	5		" 48	70	5
14			90	2		" 49	65	5
15			120	7		" 50	130	5
16			120	5		" 51	50	5
17			90	2		" 52	90	2
18			180	2		" 53	40	2
19			110	5		" 54	90	5
20			85	tr		" 55	80	2
21			65	2		" 56	25	2
22			185	5		" 57	35	2
23			160	7		" 58	35	tr
24			255	2		" 59	35	tr
25			85	2		" 60	55	tr
26			260	5		" 61	45	tr
27			120	7		" 62	70	5
28			165	7		" 63	100	2
29			165	2		" 64	30	2
30			220	2		" 65	20	5
31			200	7		" 66	20	2
32			140	7		" 67	50	2
33			185	5		" 68	30	tr
34			80	2		" 69	30	tr
35			130	2		B-2	30	tr

*J. Chilton*

SEYMOUR LABORATORY LTD.

147 Riverside Drive, North Vancouver, B.C. Tel. (604) 929-2228

CERTIFICATE OF ANALYSIS

TO QUINTANA MINERALS CORPORATION  
 STE. 1215 - ROYAL TRUST TOWER  
 2 BENTALL CENTRE  
 VANCOUVER 1, B.C.

TYPE OF SAMPLES SOIL

No. of SAMPLES 432

FILE No. 263 (Page #2 of 5)

SAMPLE No.	OZ. PER TON GOLD	OZ. PER TON SILVER	Cu% PPM	Mo% PPM	%	SAMPLE NO.	Cu% PPM	Mo% PPM
B. 3			10	tr		B. 48	70	tr
4			20	tr		49	35	2
5			5	tr		50	165	tr
6			10	tr		OB. 0	60	2
9			50	2		OB. 1	160	5
10			30	tr		OB. 2	390	2
11			5	tr		OB. 3	160	2
12			60	tr		OB. 4	45	5
13			10	tr		OB. 5	135	5
14			140	tr		OB. 6	145	2
15			25	tr		OB. 7	95	2
16			35	tr		OB. 8	80	5
17			40	tr		OB. 9	140	5
18			30	tr		OB. 10	235	5
19			80	2		OB. 11	150	5
20			15	tr		OB. 12	28	5
21			10	tr		OB. 13	75	2
22			50	tr		OB. 14	90	2
23			70	2		OB. 15	15	tr
24			30	tr		OB. 16	60	2
25			60	5		OB. 17	165	2
26			10	tr		OB. 19	145	tr
29			10	tr		OB. 20	165	2
34			5	tr		OB. 21	145	5
35			60	tr		OB. 22	140	2
36			70	tr		OB. 23	130	5
38			5	tr		OB. 24	110	5
39			20	tr		OB. 25	65	2
40			90	tr		OB. 26	165	tr
41			50	tr		OB. 27	145	2
42			60	2		OB. 28	115	2
43			100	tr		OB. 29	55	tr
45			70	tr		OB. 30	65	2
47			45	tr		OB. 31	110	2
			85	2		OB. 32	85	tr

SEYMOUR LABORATORY LTD.

147 Riverside Drive, North Vancouver, B.C. Tel. (604) 929-2228

CERTIFICATE OF ANALYSIS

TO QUINTANA MINERALS CORPORATION  
 STE. 1215 - ROYAL TRUST TOWER  
 2 BENTALL CENTRE  
 VANCOUVER1, B.C.

TYPE OF SAMPLES SOIL

No. of SAMPLES 432

FILE No. 263 (Page #3 of 5)

SAMPLE NO.	OZ. PER TON GOLD	OZ. PER TON SILVER	Cu% PPM	Mo PPM	SAMPLE NO.	Cu% PPM	Mo PPM	SAMPLE NO.	Cu% PPM	Mo PPM
OB. 33			85	tr	OB. 68	80	tr	P. 34	80	2
OB. 34			145	tr	P. 0	60	2	P. 35	30	tr
OB. 35			310	5	P. 1	50	2	P. 36	50	tr
OB. 36			125	2	P. 2	35	tr	P. 37	65	tr
OB. 37			80	2	P. 3	40	tr	P. 38	30	2
OB. 38			80	2	P. 4.	40	tr	P. 39	65	2
OB. 39			70	tr	P. 5	45	tr	P. 40	40	tr
OB. 40			55	tr	P. 6	70	tr	P. 41	80	tr
OB. 41			70	tr	P. 7	50	tr	P. 42	60	tr
OB. 42			80	tr	P. 8	90	tr	P. 43 <sup>x</sup>	50	tr
OB. 43			60	tr	P. 9	80	2	P. 45	60	tr
OB. 44			70	tr	P. 10	60	tr	P. 46	50	2
OB. 45			60	2	P. 11	60	tr	P. 47	65	tr
OB. 46			110	2	P. 12	100	tr	P. 48	80	tr
OB. 47			170	2	P. 13	100	2	P. 49	70	tr
OB. 48			75	tr	P. 14	70	tr	P. 50	40	tr
OB. 49			110	2	P. 15	65	2	P. 51	60	tr
OB. 50			135	5	P. 16	965	2	P. 52	70	2
OB. 51			110	2	P. 17	95	5	P. 53	50	tr
OB. 52			230	2	P. 18	65	2	P. 54	60	tr
OB. 53			125	tr	P. 19	65	2	P. 55	40	tr
OB. 54			110	tr	P. 20	80	2	P. 56	30	tr
OB. 55			220	2	P. 21	95	2	P. 57	70	tr
OB. 56			400	2	P. 22	70	2	P. 58	60	tr
OB. 57			100	tr	P. 23	70	2	P. 59	40	2
OB. 58			200	2	P. 24	40	2	P. 60	80	tr
OB. 59			100	2	P. 25	120	tr	P. 61	30	2
OB. 60			150	2	P. 26	70	tr	P. 62	80	2
OB. 61			150	2	P. 27	115	2	P. 63	50	tr
OB. 62			380	2	P. 28	80	tr	P. 64	25	tr
OB. 63			1000	2	P. 29	45	tr	P. 65	45	tr
OB. 64			410	2	P. 30	60	tr	P. 66	45	2
OB. 65			230	5	P. 31	50	tr	P. 67	80	2
OB. 66			160	5	P. 32	80	tr	P. 68	30	2
OB. 67			100	tr	P. 33	40	tr	P. 69	40	tr

*J. Chatter*

PROVINCIAL ASSAYER

DATE MAY 27, 1969

SEYMOUR LABORATORY LTD.

147 Riverside Drive, North Vancouver, B.C. Tel. (604) 929-2228

CERTIFICATE OF ANALYSIS

TO QUINTANA MINERALS CORPORATION  
 STE. 1215 - ROYAL TRUST TOWER  
 2 BENTALL CENTRE  
 VANCOUVER 1, B.C.

TYPE OF SAMPLES SOIL

No. of SAMPLES 432

FILE No. 263 (Page #4 of 5)

SAMPLE No.	OZ. PER TON GOLD	OZ. PER TON SILVER	Cu% PPM	Mo% PPM	SAMPLE NO.	Cu% PPM	Mo% PPM	SAMPLE NO.	Cu% PPM	Mo% PPM
P. 70			50	2	P. 105	40	tr	P. 139	60	2
P. 71			35	5	P. 106	80	2	P. 140	80	2
P. 72			45	5	P. 107	70	tr	P. 141	70	2
P. 73			30	2	P. 108	50	2	P. 142	80	2
P. 74			50	2	P. 109	190	2	P. 143	90	2
P. 75			60	tr	P. 110	70	5	P. 144	53	2
P. 76			45	2	P. 111	65	2	P. 145	85	tr
P. 77			50	5	P. 112	65	2	P. 146	60	5
P. 78			60	2	P. 113	55	2	P. 147	130	5
P. 79			30	2	P. 114	55	tr	P. 148	55	2
P. 80			55	2	P. 115	40	tr	P. 149	50	2
P. 81			60	tr	P. 116	70	tr	P. 150	50	2
P. 82			110	2	P. 117	65	2	P. 151	70	5
P. 83			45	2	P. 118	60	tr	P. 152	45	2
P. 84			60	2	P. 119	70	2	P. 153	45	2
P. 85			55	2	P. 120	60	2	P. 154	35	tr
P. 86			65	5	P. 121	55	tr	W. 0	60	tr
P. 87			55	2	P. 122	90	tr	W. 1	40	2
P. 88			50	2	P. 123	70	2	W. 2	40	tr
P. 89			60	2	P. 124	60	2	W. 3	55	2
P. 90			55	5	P. 125	65	2	W. 4	40	2
P. 91			60	2	P. 126	40	2	W. 5	80	2
P. 92			65	2	P. 127	70	5	W. 6	340	2
P. 93			40	2	P. 128	60	5	W. 7	100	2
P. 94			75	tr	P. 129	80	2	W. 8	60	2
P. 95			75	12	P. 130	50	2	W. 9	25	5
P. 96			50	tr	P. 131	60	2	W. 10	105	2
P. 97			50	2	P. 132	40	2	W. 11	70	2
P. 98			95	2	P. 133	40	tr	W. 12	70	2
P. 99			40	tr	P. 134	70	tr	W. 13	20	2
P. 100			60	tr	<del>P. 134</del>	<del>70</del>	t	W. 14	20	tr
P. 101			120	tr	P. 135	70	tr	W. 15	75	tr
P. 102			85	tr	P. 136	60	2	W. 16	50	tr
P. 103			60	tr	P. 137	100	2	W. 17	55	2
P. 104			70	2	P. 138	60	2	W. 18	75	tr

*J. Chatterton*

PROVINCIAL ASSAYER

DATE MAY 27, 1969

SEYMOUR LABORATORY LTD.

147 Riverside Drive, North Vancouver, B.C. Tel. (604) 929-2228

CERTIFICATE OF ANALYSIS

TO QUINTANA MINERALS CORPORATION  
 STE. 1215 - ROYAL TRUST TOWER  
 2 BENTALL CENTRE  
 VANCOUVER 1, B.C.

TYPE OF SAMPLES SOIL

No. of SAMPLES 432

FILE No. 263 (Page #5 of 5)

SAMPLE No.	OZ. PER TON GOLD	OZ. PER TON SILVER	C%	Mo % PPM	SAMPLE NO	Cu% PPM	Mo PPM	SAMPLE NO.	Cu PPM	Mo PPM
W.19			50	tr	W.55	55	2	Y.15	70	2
W.20			80	2	W.56	50	2	Y.16	80	2
W.21			85	2	W.57	70	2	Y.17	100	2
W.22			180	2	W.58	45	2	Y.18	65	2
W.23			80	2	W.59	60	2	Y.19	85	2
W.24			70	2	W.60	60	2	Y.20	40	2
W.25			80	2	W.61	50	2	Y.21	85	2
W.26			50	2	W.62	130	2	Y.22	100	2
W.27			45	2	W.63	70	2	Y.23	60	2
W.28			40	2	W.64	40	2	Y.24	100	2
W.29			50	2	W.65	40	2	Y.25	85	2
W.30			60	2	W.66	50	2			
W.31			45	2	W.67	70	2			
W.32			130	2	W.68	200	2			
W.33			45	2	W.69	60	2			
W.34			60	2	W.70	40	2			
W/35			60	2	W.71	50	2			
W.36			70	2	W.72	60	2			
W.37			80	2	W.73	70	2			
W.38			60	2	W.74	105	2			
W.39			60	2	W.75	90	2			
W.40			70	2	Y. 0	130	2			
W.41			100	2	Y. 1	90	2			
W.42			60	5	Y. 2	120	2			
W.43			70	5	Y. 3	80	2			
W.44			65	5	Y. 4	60	2			
W.45			30	2	Y. 5	100	2			
W.46			45	2	Y. 6	90	2			
W.47			75	2	Y. 7	90	2			
W.48			100	2	Y. 8	120	2			
W.49			80	2	Y. 9	60	2			
W.50			140	2	Y.10	90	2			
W.51			75	2	Y.11	75	2			
W.52			100	2	Y.12	80	2			
W.53			75	2	Y.13	200	2			
W.54			80	2	Y.14	70	2			

*J. Chatterton*

PROVINCIAL ASSAYER

DATE MAY 27, 1969

SEYMOUR LABORATORY LTD.

147 Riverside Drive, North Vancouver, B.C. Tel. (604) 929-2228

DCM

No. 295

CERTIFICATE OF ANALYSIS

Plot Renfrew

TO QUINTANA MINERALS CORPORATION  
 STE. 1215 - ROYAL TRUST TOWER  
 2 BENTALL CENTRE  
 VANCOUVER 1, B.C.

TYPE OF SAMPLES SOIL

No. of SAMPLES 456

FILE No. 295 Our Inv. 1027

SAMPLE No.	OZ. PER TON GOLD	OZ. PER TON SILVER	% Cu PPM	Mo% PPM	SAMPLE NO	% Cu PPM	Mo PPM	SAMPLE NO	% Cu PPM
PA 1			45	2	R 16	205	Tr	T 37	10 Tr
PA 2			60	2	R 17	170	5	T 38	15 Tr
PA 3			40	2	R 18	60	Rr	T 39	10 Tr
PA 4			30	2	R 19	35	Tr	T 40	20 Tr
PA 5			70	Tr	R 20	60	Tr	T 41	15 Tr
PA 6			65	2	T 1	115	Tr	T 42	20 Tr
PA 7			265	Tr	T 2	110	2	T 43	10 Tr
PA 8			80	5	T 3	90	2	T 44	20 Tr
PA 9			50	2	T 4	125	2	T 45	40 Tr
PA 10			50	Tr	T 5	45	2	T 46	100 Tr
PA 11			50	2	T 6	40	Tr	T 47	20 Tr
PA 12			60	Tr	T 7	60	Tr	T 48	4 Tr
PA 13			85	2	T 8	45	Tr	T 49	50 Tr
PA 14			50	2	T 9	60	Tr	T 50	150 Tr
PA 15			25	Tr	T 10	50	Tr	T 51	40 2
PA 16			40	5	T 11	70	2	T 52	10 Tr
Q 1			60	Tr	T 12	35	2	T 53	75 Tr
Q 2			40	2	T 13	60	Tr	T 54	50 Tr
Q 3			50	2	T 14	70	2	T 55	40 Tr
				X	T 15	40	2	T 56	30 Tr
R 1			60	2	T 16	80	Tr	T 57	110 Tr
R 2			55	5	T 17	60	Tr	T 58	60 Tr
R 3			20	2	T 18	40	Tr	T 59	20 Tr
R 4			40	2	T 19	45	2	T 60	10 Tr
R 5			30	Tr	T 20	50	2	T 61	110 Tr
R 6			45	Tr	T 21	90	Tr	T 62	16 Tr
R 7			30	Tr	T 22	60	Tr	T 63	10 Tr
R 8			30	Tr	T 23	20	2	T 64	50 Tr
R 9			20	Tr	T 24	60	2	T 65	20 Tr
R 10			10	Tr	T 25	80	2	T 66	105 Tr
R 11			60	5	T 26	50	2	T 67	40 Tr
R 12			10	Tr	T 27	160	Tr	T 68	15 Tr
R 13			40	Tr	T 29	30	Tr	T 69	10 Tr
R 14			25	Tr	T 35	15	2	T 70	60 Tr
R 15			82	Tr	T 36	10	Tr	T 71	120 Tr

Form SL 4 *J. Chatters* PROVINCIAL ASSAYER DATE JUNE 11, 1969  
 OK-Plot 12111 7/2/19

SEYMOUR LABORATORY LTD.

147 Riverside Drive, North Vancouver, B.C. Tel. (604) 929-2228

CERTIFICATE OF ANALYSIS

TO QUINTANA MINERAL CORPORATION  
 STE. 1215 - ROYAL TRUST TOWER  
 2 BENTALL CENTRE  
 VANCOUVER 1, B.C.

TYPE OF SAMPLES SOIL

No. of SAMPLES 456

FILE No. 295 Our Inv. 1027

SAMPLE No.	OZ. PER TON GOLD	OZ. PER TON SILVER	% Cu PPM	Mo <sup>xx</sup> PPM	SAMPLE NO	%Cu PPM		SAMPLE NO.	% Cu PPM	
T 72			30	Tr	T 31	20	5	U 17	80	Tr
T 73			70	Tr	T 32	10	2	U 18	100	Tr
T 74			60	Tr	T 33	16	5	U 19	40	Tr
T 75			90	Tr	T 34	10	5	U 20	110	Tr
T 76			100	2	T 105	20	5	U 21	130	2
T 77			80	Tr	T 106	30	5	U 22	110	2
T 78			55	Tr	T 107	20	Tr	U 23	32	Tr
T 79			40	Tr	T 108	50	Tr	U 24	110	Tr
T4080			70	Tr	T 109	20	Tr	U 25	60	Tr
T 81			80	2	T 110	10	Tr	U 26	120	Tr
T 82			30	% 5	T 111	16	Tr	U 27	70	Tr
T 83			100	5	T 112	40	Tr	U 28	85	Tr
T 84			35	2	T 113	70	Tr	U 29	80	Tr
T 85			50	Tr	T 114	80	Tr	U 30	110	Tr
T 86			55	Tr	T 115	30	2	U 31	150	Tr
T 87			80	Tr	T 116	20	2	U 32	80	Tr
T 88			40	TR	T 117	20	2	U 33	220	Tr
T 89			90	Tr	T 118	40	5	U 34	50	Tr
T 90			70	Tr	U 0	60	2	U 35	100	Tr
T 91			110	Tr	U 1	40	2	U 36	90	Tr
T 92			100	Tr	U 2	30	2	U 37	160	Tr
T 93			90	Tr	U 3	40	2	U 38	30	Tr
T 94			70	Tr	U 4	30	Tr	U 39	80	Tr
T 95			840	24	U 5	50	Tr	U 40	70	2
T 96			140	2	U 6	60	Tr	U 41	70	2
T 97			86	Tr	U 7	40	2	U42	110	2
T 98			90	2	U 8	110	5	U 43	110	Tr
T 99			100	2	U 9	60	Tr	U 44	80	Tr
T 100			100	Tr	U 10	20	Tr	U 45	700	Tr
T 101			70	TR	U 11	10	Tr	U 46	50	Tr
T 102			70	2	U 12	60	2	U 47	100	Tr
T 103			40	2	U 13	55	Tr	U 48	80	Tr
T 104			40	2	U 14	80	Tr	U 49	100	Tr
T 28			20	2	U 15	85	Tr	U 50	100	Tr
T 30			40	% 5	U 16	40	Tr	U 51	40	Tr



SEYMOUR LABORATORY LTD.

147 Riverside Drive, North Vancouver, B.C. Tel. (604) 929-2228

CERTIFICATE OF ANALYSIS

TO: QUINTANA MINERAL CORPORATION"  
 STE. 1215 - ROYAL TRUST TOWER  
 2 BENTALL CENTRE  
 VANCOUVER 1, BCC

TYPE OF SAMPLES SOIL

No. of SAMPLES 456

FILE No. 295 Our Inv. 1027  
 Page #3

SAMPLE No.	OZ. PER TON GOLD	OZ. PER TON SILVER	% Cu PPM	Mo % PPM	SAMPLE NO	%Cu PPM	Mo PPM	SAMPLE NO.	% Cu PPM	
U 52			160	Tr	Y 45	100	Tr	Y 80	30	Tr
U 53			230	Tr	Y 46	60	Tr	Y 81	110	Tr
U 54			40	Tr	Y 47	90	Tr	Y 82	80	Tr
U 55			60	Tr	Y 48	60	Tr	Y 83	80	Tr
U 56			20	Tr	Y 49	30	Tr	Y 84	60	Tr
U 57			60	Tr	Y 50	50	Tr	Y 85	50	Tr
U 58			60	Tr	Y 51	65	Tr	Y 86	70	Tr
W 76			80	Tr	Y 52	60	Tr	Y 87	70	Tr
W 77			80	Tr	Y 53	100	Tr	Y 88	90	Tr
W78			70	2	Y 54	70	Tr	Y 89	220	Tr
W 79			80	5	Y 55	70	Tr	Y 90	130	Tr
W 80			80	Tr	Y 56	90	Tr	Y 91	110	Tr
W 81			70	Tr	Y 57	70	Tr	Y 92	100	Tr
W 82			80	Tr	Y 58	60	Tr	Y 93	100	Tr
W 83			70	2	Y 59	180	Tr	Y 94	80	Tr
W 84			100	2	Y 60	60	2	Y 95	120	Tr
W 85			80	2	Y 61	110	2	Y 96	130	Tr
W 86			65	Tr	Y 62	70	2	Y 97	90	Tr
W 87			100	Tr	Y 63	80	5	Y 98	130	Tr
W 88			80	Tr	Y 64	70	Tr	Y 99	110	TR
W 89			40	Tr	Y 65	90	Tr	Y 100	100	Tr
W 90			70	Tr	Y 66	100	Tr	Y 101	110	2
Y 32			50	Tr	Y 67	100	Tr	Y 102	90	2
Y 33			90	Tr	Y 69	100	2	Y103	120	2
Y 34			80	2	Y 69	110	2	Y 104	110	2
Y 35			80	2	Y 70	100	2	Y 105	120	Tr
Y 36			40	2	Y 71	70	2	Y 106	220	Te
Y 37			60	Tr	Y 72	80	2	Y 107	80	Tr
Y 38			70	Tr	Y 73	70	2	Y 108	140	Tr
Y 39			40	Tr	Y 74	60	Tr	Y 109	60	Tr
Y 40			80	Tr	Y 75	80	Tr	Y 110	120	Tr
Y 41			60	Tr	Y 76	60	Tr	Y 111	100	Tr
Y 42			70	Tr	Y 77	50	Tr	Y	110	Tr
Y 43			40	Tr	Y 78	100	Tr	Y 113	140	Tr
Y 44			50	Tr	Y 79	50	Tr	Y 114	110	Tr

*J. Chatter*

PROVINCIAL ASSAYER

DATE JUNE 11, 1969

SEYMOUR LABORATORY LTD.

147 Riverside Drive, North Vancouver, B.C. Tel. (604) 929-2228

CERTIFICATE OF ANALYSIS

TO: QUINTANA MINERAL CORPORATION  
 STE. 1215 - ROYAL TRUST TOWER  
 2 BENTALL CENTRE  
 VANCOUVER 1, B.C.

TYPE OF SAMPLES SOIL

No. of SAMPLES 456

FILE No. 295 Our Inv. 1027

Page #6

SAMPLE No.	OZ. PER TON GOLD	OZ. PER TON SILVER	% Cu PPM	Mo% PPM	%	SAMPLE NO.	% Cu PPM	Mo PPM
Y 115			100	Tr		Y 151	80	2
Y 116			100	tr		Y 152	100	2
Y 117			100	tr		Y 153	140	2
Y 118			90	tr		Y 154	170	tr
Y 119			90	tr		Y 155	80	tr
Y 120			80	tr		Y 156	140	tr
Y 121			160	tr		Y 157	210	tr
Y 122			80	tr		Y 158	120	tr
Y 123			64	tr		Y 159	100	tr
Y 124			130	tr		Y 160	50	tr
Y 125			100	tr		Y 161	90	tr
Y 126			160	tr		Y 162	110	tr
Y 127			90	tr		Y 163	140	tr
Y 128			240	tr		Y 164	60	tr
Y 129			210	tr		Y 165	100	tr
Y 130			170	tr		Y 166	60	tr
Y 131			110	tr		Y 167	100	tr
Y 132			100	tr		Y 168	60	tr
Y 133			100	tr		Y 169	90	tr
Y 134			160	tr		Y 170	80	tr
Y 135			160	tr		Y 171	80	tr
Y 136			150	tr		Y 172	70	tr
Y 137			110	tr		Y 173	60	tr
Y 138			100	tr		Y 174	120	tr
Y 139			50	tr		Y 175	100	tr
Y 140			140	tr		Y 176	110	tr
Y 141			80	tr		Y 177	100	tr
Y 142			90	tr		Y 178	140	tr
Y 143			160	tr		Y 179	80	tr
Y 144			100	tr		Y 180	90	tr
Y 145			190	tr		Y 181	100	2
Y 146			140	tr		Y 182	180	2
Y 147			170	tr		Y 183	170	tr
Y 148			150	tr		Y 184	120	tr
Y 149			360	tr		Y 185	130	2
Y 150			270	tr		Y 186	90	2

Form SL 4 *J. Clifton* PROVINCIAL ASSAYER DATE JUNE 11, 1969

## SEYMOUR LABORATORY LTD.

147 Riverside Drive, North Vancouver, B.C. Tel. (604) 929-2228

## CERTIFICATE OF ANALYSIS

TO QUINTANA MINERAL CORPORATION  
 STE. 1215 - ROYAL TRUST TOWER  
 2 BENTALL CENTRE  
 VANCOUVER 1, B.C.

TYPE OF SAMPLES SOIL

No. of SAMPLES 456

FILE No. 295 Our Inv. 1027

Page #5 of 5.

SAMPLE No.	OZ. PER TON GOLD	OZ. PER TON SILVER	% Cu PPM	Mo PPM	%	SAMPLE NO.	% C u PPM	Mo PPM
Y 187			120	2		Y 223	130	tr
Y 188			90	tr		Y 224	120	yr
Y 189			80	tr		Y 225	140	tr
Y 190			170	tr		Y 226	200	tr
Y 191			100	tr		Y 227	100	tr
Y 192			120	tr		Y 228	200	tr
Y 193			130	tr		Y 229	150	tr
Y 194			210	tr		Y 230	180	tr
Y 195			190	tr		Y 231	170	tr
Y 196			180	tr		Y 232	150	tr
Y 197			180	tr		Y 233	70	tr
Y 198			60	tr		Y 234	200	tr
Y 199			130	tr		Y 235	70	tr
Y 200			180	tr		Y 236	80	tr
Y 201			140	tr		Y 237	160	tr
Y 202			140	tr		Y 238	100	tr
Y 203			130	tr		Y 239	100	tr
Y 204			180	tr		Y 240	110	tr
Y 205			260	tr		Y 241	80	tr
Y 206			240	tr		Y 242	60	tr
Y 207			280	tr		Y 243	120	tr
Y 208			120	tr		Y 244	110	tr
Y 209			220	tr		Y 245	80	tr
Y 210			190	tr		Y 246	110	tr
Y 211			140	tr		Y 247	100	tr
Y 212			210	tr		Y 248	60	tr
Y 213			370	tr		Y 249	60	tr
Y 214			140	tr		Y 250	90	tr
Y 215			120	tr		Y 251	90	tr
Y 216			110	tr		Y 252	120	tr
Y 217			70	tr		Y 253	100	tr
Y 218			140	tr		Y 254	200	tr
Y 219			110	tr		Y 255	340	tr
Y 220			160	tr		Y 256	270	tr
Y 221			110	tr				
Y 222			120	tr				

KX

SEYMOUR LABORATORY LTD.

147 Riverside Drive, North Vancouver, B.C. Tel. (604) 929-2228

No. 302

CERTIFICATE OF ANALYSIS

TO QUINTANA MINERALS CORPORATION  
 STE. 1215 - ROYAL TRUST TOWER  
 2 BENTALL CENTRE  
 VANCOUVER 1, B.C.

TYPE OF SAMPLES SOIL

No. of SAMPLES ~~XXX~~ 245

FILE No. 302 Our inv. 1046

Re: RENFREW PROJ. (E.P. Taylor)

(Page #1)

SAMPLE No.	OZ. PER TON GOLD	OZ. PER TON SILVER	% Cu PPM	% Mo PPM		SAMPLE NO.	% Cu PPM	% Mo PPM
A1- 1			70	2		A1 38	35	tr
2			70	2		39	50	tr
3			60	tr		40	80	tr
4			55	2		41	80	2
*5			60	2		42	110	2
*56			30	2		43	155	2
67			140	tr		44	50	tr
79			40	tr	A3	0	160	tr
89			35	2		1	150	2
A1-10			60	2		2	115	tr
11			55	5		3	100	tr
12			80	2		4	80	tr
14			40	2		5	80	2
15			75	tr		6	85	tr
16			30	tr		7	110	tr
17			20	tr		8	125	2
18			10	8	A3	9	125	2
19			55	2		10	125	2
A1- 20			85	2		12	270	tr
21			30	8		13	130	5
22			10	2		14	130	5
23			45	2		15	55	5
24			50	tr		16	140	tr
25			80	tr		17	110	2
26			60	tr		18	165	2
27			40	tr		19	80	2
28			75	tr	A3	20	140	2
29			90	tr		21	120	5
30			20	2		22	85	2
31			40	tr		23	50	2
32			15	tr		24	90	2
33			15	tr		25	65	tr
34			65	2		26	50	tr
36			60	2		28	70	2
37			50	2	A3	51	50	5

SEYMOUR LABORATORY LTD.

147 Riverside Drive, North Vancouver, B.C. Tel. (604) 929-2228

CERTIFICATE OF ANALYSIS

TO QUINTANA MINERALS CORPORATION  
 STE. 1215 - ROYAL TRUST TOWER  
 2 BENTALL CENTRE  
 VANCOUVER 1, B.C.

TYPE OF SAMPLES SOIL

No. of SAMPLES 246

FILE No. 302 Our Inv. 1046

(Page #2)

SAMPLE No.	OZ. PER TON GOLD	OZ. PER TON SILVER	% Cu PPM	% Mo PPM	%	%	SAMPLE NO.	% Cu PPM	% Mo PPM
A3 52			125	tr			A4 10	120	10
53			110	tr			11	45	5
54			100	tr			12	45	2
55			190	tr			13	105	12
56			135	tr			13	110	2
57			155	2			14	80	5
58			85	tr			15	110	2
59			65	2			16	155	2
A3 60			110	10			17	45	2
61			100	tr			18	60	5
62			150	5			19	80	2
63			60	5			20	110	5
64			50	tr			21	60	tr
65			115	8			22	30	tr
66			180	2			23	50	5
67			115	tr			24	85	2
68			110	5			25	85	2
69			115	tr			26	25	2
A3 70			60	2			27	60	2
71			10	5			28	50	2
72			35	2			29	70	2
73			45	tr			30	150	2
74			35	tr			31	50	2
75			50	tr			32	50	2
76			35	tr			33	60	2
77			60	tr			34	30	2
A4 1			45	tr			35	35	2
2			80	tr			36	45	tr
3			50	tr			A5 0	60	tr
4			110	tr			1	170	2
5			130	2			2	150	2
6			70	2			3	55	2
7			155	2			4	95	tr
8			70	8			5	40	tr
9			30	8			6	40	2

SEYMOUR LABORATORY LTD.

147 Riverside Drive, North Vancouver, B.C. Tel. (604) 829-2228

CERTIFICATE OF ANALYSIS

TO QUINTANA MINERALS CORPORATION  
STE. 1215 - ROYAL TRUST TOWER  
2 BENTALL CENTRE  
VANCOUVER 1, B.C.

TYPE OF SAMPLES SOIL  
 No. of SAMPLES 245  
302 Our Inv. 1046  
 FILE No. Page #3

SAMPLE No.	OZ. PER TON GOLD	OZ. PER TON SILVER	%Cu PPM	%Mo PPM	%	%	SAMPLE NO.	% Cu PPM	% Mo PPM
A5 7			40	tr		A5	40	25	2
8			65	2		41	25	tr	
9			60	2		42	60	tr	
10			90	2		42	50	tr	
11			140	tr		44	45	tr	
12			50	2		45	65	2	
12			120	2		46	75	2	
13			75	2		47	50	5	
14			80	5		50	110	5	
15			160	48		51	25	2	
16			140	12		52	15	2	
17			80	20		54	30	2	
18			255	2		55	60	2	
19			130	2		56	65	2	
20			530	8		57	55	5	
21			170	2		58	65	5	
22			95	2		59	65	2	
23			90	5		60	60	2	
24			120	5		61	40.q	2	
25			20	2		62	Not sufficient soil		
26			90	2		63	"	"	"
27			70	2		64	60	2	
28			90	5		66	50	2	
29			150	tr		66	65	2	
30			150	2		2744	1	40	2
31			160	5		2	25	5	
32			510	5		3	15	5	
33			180	5		4	45	5	
34			130	2		5	55	2	
A5 35			115	2		6	55	2	
36			115	2		7	45	2	
37			187	5		8	50	2	
38			40	5		8	30	2	
39			120	tr		9	20	2	
			30	tr		10	80	2	

*J. Chatter*

PROVINCIAL ASSAYER

DATE

SEYMOUR LABORATORY LTD.

147 Riverside Drive, North Vancouver, B.C. Tel. (604) 929-2228

CERTIFICATE OF ANALYSIS

TO QUINTANA MINERALS CORP.  
STE. 1215 ROYAL TRUST TOWER  
2 BENTALL CENTRE  
VANCOUVER 1, B.C.

TYPE OF SAMPLES SOIL

No. of SAMPLES 245

FILE No. 302 Our Inv. 1046  
 Page #4

SAMPLE No.	OZ. PER TON GOLD	OZ. PER TON SILVER	% Cu PPM	% Mo PPM	%	SAMPLE NO.	% Cu PPM	% Mo PPM
2A 4 11			45	2		10F-11 #3	184	2
12			20	tr		#4	45	20
14			20	2		#5	100	5
* 15			NSS	NSS		#6	35	5
* 16			NSS	NSS				
17			60	2				
18			30	2				
19			35	tr				
20			65	2				
21			40	2				
22			25	2				
23			50	2				
24			20	2				
25			70	2				
26			80	5				
27			50	tr				
28			50	2				
29			50	2				
30			25	2				
31			50	5				
DP 1			120	10				
2			25	2				
3			80	2				
4			55	5				
5			45	5				
6			60	2				
8			30	tr				
9			15	tr				
10			25	tr				
11			25	10				
4-4 A			110	5				
B			65	2				
C			85	2				
10 1 #1			110	2				
2			25	5				

NOTE: Page #1 - Two #5 Samples.  
 " #3 - Sample Nos. 62 & 3  
 and " #4 - " " 15 & 16  
 Not Sufficient Sample.

SEYMOUR LABORATORY LTD.

147 Riverside Drive, North Vancouver, B.C. Tel. (604) 929-2228

No. 344

CERTIFICATE OF ANALYSIS

TO QUINTANA MINERALS CORPORATION  
 STE. 1215 - ROYAL TRUST TOWER  
 2 BENTALL CENTRE  
 VANCOUVER 1, B.C.

TYPE OF SAMPLES SOIL

No. of SAMPLES .....

FILE No. 344 Our Inv. 1107

SAMPLE No.	OZ. PER TON GOLD	OZ. PER TON SILVER	% Cu PPM	Mo % PPM	%	SAMPLE NO.	Cu PPM	Mo PPM
R24-10			105	2		R25-11	50	5
11			110	2		12	20	12
12			40	2		13	50	5
13			80	5		14	130	10
14			100	2		15	75	5
15			75	2		16	50	5
16			60 <sub>q</sub>	5		17	15	8
17			100	2				
R24-18			55	2				
19			75	2				
20			70	2				
21			80	tr				
22			55	2				
23			100	5				
24			60	tr				
25			90	2				
26			140	2				
27			85	2				
28			135	2				
29			210	2				
30			170	5				
31			55	5				
32			60	5				
33			40	5				
R25-0			50	tr				
1			65	2				
2			55	2				
3			80	2				
4			90	2				
5			35	2				
6			70	5				
7			140	5				
8			100	tr				
9			100	5				
10			50	5				

*J. Clouston*  
 PROVINCIAL ASSAYER

DATE JULY 10, 1969



SEYMOUR LABORATORY LTD.

147 Riverside Drive, North Vancouver, B.C. Tel. (604) 929-2228

N<sup>o</sup> 344

CERTIFICATE OF ANALYSIS

TO QUINTANA MINERALS CORPORATION  
 Ste. 1215 - ROYAL TRUST TOWER  
 2 BENTALL CENTRE  
 VANCOUVER 1, B.C.

TYPE OF SAMPLES SOIL  
 No. of SAMPLES 1189  
 FILE No. 344 Our inv. 1107

SAMPLE No.	OZ. PER TON GOLD	OZ. PER TON SILVER	Cu <sup>%</sup> PPM	Mo <sup>%</sup> PPM	%	SAMPLE NO.	Cu PPM	Mo PPM
R20- 1			50	tr		R21-13	50	tr
2			45	tr		14	60	2
3			40	2		15	100	2
4			40	2		16	60	2
5			30	2		17	60	5
6			20	2		18	120	tr
7			60	2		19	80	2
8			40	2		20	55	5
9			60	2		R21-21	85	5
10			120	2		22	95	5
11			50	tr		23	45	2
12			140	2		24	60	5
13			70	2		25	70	tr
14			80	tr		26	55	2
15			85	5		27	80	2
16			150	2		28	70	2
17			35	2		29	45	2
18			56	tr		30	50	5
19			40	tr		R21-31	80	tr
R20-20			50	tr		32	60	tr
21			45	2		33	90	2
22			30	2		34	70	5
R21- 0			50	tr		35	45	2
1			60	2		36	65	tr
2			40	2		37	40	2
3			90	2		38	70	2
4			70	5		39	60	5
5			105	5		40	45	tr
6			50	5		R21-41	40	2
7			80	tr		42	80	2
8			65	2		43	80	2
9			70	2		44	120	tr
10			60	2		45	70	tr
11			55	2		46	40	tr
12			60	tr		47	70	5

*J. Chatter*

SEYMOUR LABORATORY LTD.

147 Riverside Drive, North Vancouver, B.C. Tel. (604) 929-2228

CERTIFICATE OF ANALYSIS

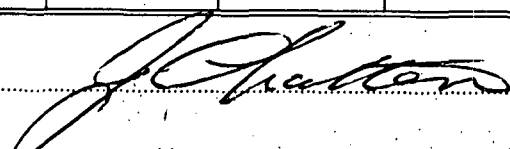
TO QUINTANA MINERALS CORPORATION  
 STE. 1215 - ROYAL TRUST TOWER  
 2 BENTALL CENTRE  
 VANCOUVER 1, B.C.

TYPE OF SAMPLES SOIL

No. of SAMPLES 1189

FILE No. 344 Our Inv. 1107

SAMPLE No.	OZ. PER TON GOLD	OZ. PER TON SILVER	Cu % PPM	Mo % PPM	%	SAMPLE NO.	Cu PPM	Mo PPM
JP- 302			25	2		R8-61	40	2
303			10	tr		62	40	tr
304			40	tr		63	45	2
305			30	tr		64	30	2
306			110	2		65	30	2
307			108	2		66	60	2
308			90	5		67	75	tr
309			80	2		68	50	tr
310			295	5		69	35	2
311			110	2		70	50	2
312			100	2		71	100	2
313			142	2		72	55	2
314			140	2		73	50	2
315			160	2		74	55	5
316			145	5		R8-75	40	2
317			15	2		76	45	2
318			55	2		77	40	2
319			40	5		78	40	5
320			15	2		79	60	5
321			40	2		80	30	2
322			40	5		81	30	2
323			30	tr		82	40	2
324			20	2		83	90	8
325			15	2		84	60	2
326			50	2		85	60	tr
327			30	2		86	35	tr
328			30	tr		87	40	2
329			60	tr		88	45	2
R8- 54			30	2		89	35	2
55			40	tr		90	60	tr
56			40	2		91	60	2
57			70	2		92	35	tr
58			55	2		93	55	2
59			50	2		94	60	2
60			70	2		95	40	2
						96	50	2



SEYMOUR LABORATORY LTD.

147 Riverside Drive, North Vancouver, B.C. Tel. (604) 929-2228

CERTIFICATE OF ANALYSIS

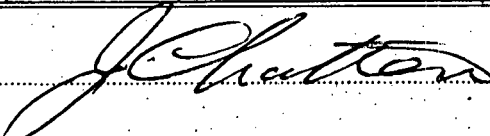
TO QUINTANA MINERALS CORPORATION  
 STE. 1215 ROYAL TRUST TOWER  
 2 BENTALL CENTRE  
 VANCOUVER 1, B.C.

TYPE OF SAMPLES SOIL

No. of SAMPLES

FILE No. 344 Our Inv. 1107

SAMPLE No.	OZ. PER TON GOLD	OZ. PER TON SILVER	Cu % PPM	Mo % PPM	%	SAMPLE NO.	Cu PPM	Mo PPM
A7- 56			05	2		All-0	50	2
57			40	2		<del>XXXXXX</del>		
58			55	2		All-1	30	2
59			10	tr		2	35	5
60			15	tr		3	30	tr
61			0	tr		4	50	2
62			15	tr		5	30	2
63			10	2		6	90	tr
64			10	2		7	180	tr
65			65	2		8	50	2
66			10	5		9	35	2
67			25	2		10	40	2
68			30	tr		11	50	2
69			25	5		12	70	2
70			10	5		13	20	2
71			20	5		14	35	5
72			15	2		15	60	8
73			35	5		16	45	2
74			40	5		17	30	2
75			30	2		18	30	2
76			80	2		19	20	8
77			65	tr		20	50	5
78			05	tr		21	25	8
79			35	tr		22	40	2
80			40	tr		23	35	2
81			20	tr		24	15	2
82			10	2		25	40	5
83			20	tr		26	60	5
84			55	tr		27	35	2
85			tr	tr		28	55	2
86			25	tr		29	50	2
87			40	tr		30	55	2
A10-18			25	tr		31	25	2
19			25	tr		32	15	2
A-1020			35	tr		33	35	tr
						34	55	tr



PROVINCIAL ASSAYER

DATE JULY 10, 1969

SEYMOUR LABORATORY LTD.

147 Riverside Drive, North Vancouver, B.C. Tel. (604) 929-2228

CERTIFICATE OF ANALYSIS

TO QUINTANA MINERALS CORPORATION  
 STE. 1215 ROYAL TRUST TOWER  
 2 BENTALL CENTRE  
 VANCOUVER 1, B.C.  
 Re: RENFREW PROPERTY

TYPE OF SAMPLES SOIL  
 No. of SAMPLES 1189  
 FILE No. 344 Our Inv. 1107

SAMPLE No.	OZ. PER TON GOLD	OZ. PER TON SILVER	Cu % PPM	Mo % PPM	%	SAMPLE NO.	Cu PPM	Mo PPM
R14-74			90	2		R 14-109	60	2
75			100	2		110	80	5
76			620	5		111	100	5
77			60	2		112	160	5
78			60	2		113	150	2
79			140	2		114	80	8
80			80	2		115	55	5
81			50	2		116	110	tr
82			120	2		117	95	5
83			110	tr		118	60	2
84			125	2		119	112	tr
85			140	5		120	300	tr
86			75	2		121	480	tr
87			55	5		122	90	tr
88			175	12		123	600	2
89			360	5		124	120	2
90			75	2		125	380	5
91			135	2		126	390	5
92			380	2		127	210	2
R14-93			90	5		128	110	2
94			95	2		130	100	2
95			90	8		131	225	2
96			75	5		129	100	2
97			95	2		132	45	2
98			100	2		133	105	2
99			140	5		134	110	2
100			175	2		135	125	tr
101			85	5		136	130	2
102			110	2		137	110	tr
103			60	2		138	120	tr
104			60	tr		139	50	2
105			40	tr		140	90	5
106			40	tr		141	40	5
107			50	2		143	80	2
108			35	5		144	150	5

*J. Shotton*

PROVINCIAL ASSAYER

DATE JULY 10, 1969

SEYMOUR LABORATORY LTD.

147 Riverside Drive, North Vancouver, B.C. Tel. (604) 929-2228

CERTIFICATE OF ANALYSIS

TO: QUANTANA MINERALS CORPORATION  
 STE. 1215 ROYAL TRUST TOWER  
 2 BENTALL CENTRE  
 VANCOUVER 1, B.C.

TYPE OF SAMPLES: SOIL

No. of SAMPLES: 1189

FILE No. 344 Our Inv. 11897  
 1107

Re: RENEW PROPERTY

SAMPLE No.	OZ. PER TON GOLD	OZ. PER TON SILVER	Cu % PPM	Mo % PPM	%	SAMPLE NO.	Cu PPM	Mo PPM
R14- 4			30	tr		R14-39	70	2
5			120	2		40	80q	2
6			60	5		41	50	2
7			40	5		42	45	2
8			70	5		43	55	5
9			115	2		44	35	2
10			50	tr		45	50	2
11			130	2		46	52	8
12			30	2		47	40	5
R14- 13			50	2		48	35	2
14			50	2		49	50	5
15			20	2		50	70	2
16			38	2		51	100	5
17			50	5		52	60	2
18			55	tr		R14-53	230	2
19			50	5		54	270	8
20			35	5		55	325	8
21			40	5		56	105	5
22			40	2		57	150	2
23			70	2		58	190	5
24			115	2		59	225	8
25			70	5		60	60	5
26			130	5		61	60	2
27			100	2		62	60	5
28			80	2		R14-63	80	5
29			35	2		64	770	12
30			50	5		65	100	10
31			50	10		66	40	2
32			30	2		67	180	2
R14- 34			40	5		68	35	2
35			70	8		69	55	2
36			40	8		70	85	2
*36			150	5		71	70	10
37			60	tr		72	40	2
38			60	2		73	60	tr

*J. Chatterton* PROVINCIAL ASSAYER

DATE: .....

JULY 19 1969

SEYMOUR LABORATORY LTD.

147 Riverside Drive, North Vancouver, B.C. Tel. (604) 929-2228

CERTIFICATE OF ANALYSIS

TO QUINTANA MINERALS CORPORATION  
 STE. 1215 ROYAL TRUST TOWER  
 2 BENTALL CENTRE  
 VANCOUVER 1, B.C.

TYPE OF SAMPLES SOIL

No. of SAMPLES 1189

FILE No. 344 Our Inc. 1107

Re: Renfrew Property

SAMPLE No.	OZ. PER TON GOLD	OZ. PER TON SILVER	Cu % PPM	Mo % PPM	%	SAMPLE NO.	Cu PPM	Mo PPM
R12-26			40	2		R 13- 0	35	2
27			40	2		1	130	2
28			120	2		2	45	2
29			85	tr		3	50	tr
30			80	2		4	100	tr
31			120	2		5	90	5
32			65	tr		6	30	5
33			80	2		7	60	2
34			100	5		8	70	2
35			85	tr		9	100	2
36			60	2		10	35	X 5
37			60	tr		11	55	5
38			80	5		12	65	5
39			80	5		13	50	2
40			105	2		14	40	tr
41			60	2		15	15	tr
42			80	2		16	45	2
43			85	tr		17	35	2
R12-44			100	2		18	45	2
45			80	2		19	10	2
46			85	5		20	10	2
47			95	5		21	55	tr
48			80	5		22	30	2
49			85	2		23	20	2
50			130	tr		24	60	tr
51			130	2		25	55	2
52			70	2		27	130	2
53			65	2		28	40	2
54			170	2		29	60	2
55			140	2		30	50	2
56			60	2		31	40	tr
57			70	2		R14- 0	50	2
58			85	2		1	60	tr
59			110	tr		2	50	tr
						3	30	tr

*J. Chatter*

PROVINCIAL ASSAYER

DATE JULY 10, 1969

SEYMOUR LABORATORY LTD.

147 Riverside Drive, North Vancouver, B.C. Tel. (604) 929-2228

CERTIFICATE OF ANALYSIS

TO: QUINTANA MINERALS CORPORATION  
 Ste. 12151 ROYAL TRUST TOWER  
 2 BENTALL CENTRE  
 VANCOUVER 1, B.C.

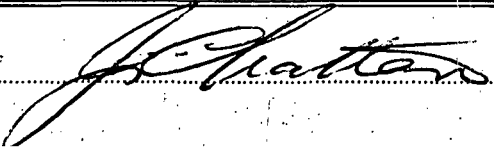
TYPE OF SAMPLES SOIL

No. of SAMPLES 1189

FILE No. 344 Our Inv. 1107

Re: RENEREW

SAMPLE No.	OZ. PER TON GOLD	OZ. PER TON SILVER	Cu % PPM	Mo % PPM	%	SAMPLE NO	Cu PPM	Mo PPM
R10- 19			70	2		R11-20	60	2
20			180	5		21	55	2
21			150	2	R	11A- 0	40	2
22			60	2	R	11A- 1	55	tr
23			60	tr		2	50	tr
24			50	2		3	40	tr
25			50	2		4	70	tr
26			75	5		5	90	tr
R10- 27			65	2		6	35	tr
28			90	2		R12- 0	45	tr
29			95	2		1	35	tr
30			140	2		2	90	tr
31			40	2		3	56	tr
32			45	2		4	30	2
33			55	2		5	40	tr
R11- 0			80	5		6	35	tr
1			65	2		7	50	tr
2			60	5		8	45	2
3			70	tr		9	85	tr
4			60	2		10	55	trace
R11- 5			55	2'		11	65	tr
6			55	8		12	60	tr
7			90	2		13	60	tr
8			55	5		R12-14	45	2
9			65	2		15	30	2'
10			80	tr		16	20	2
11			65	2		17	40	tr
12			70	2		18	35	2
13			170	tr		19	20	tr
14			150	2		20	40	2
15			100	2		21	45	2
16			60	tr		22	70	2
17			90	2		23	45	2
18			50	tr		24	60	2
19			35	tr		25	30	2



SEYMOUR LABORATORY LTD.

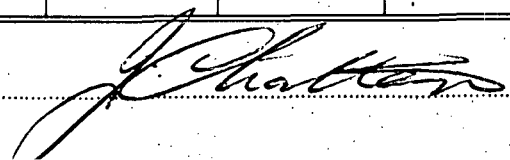
147 Riverside Drive, North Vancouver, B.C. Tel. (604) 929-2228

CERTIFICATE OF ANALYSIS

TO: QUINTANA MINERALS CORPORATION  
 STE. 1215 - ROYAL TRUST TOWER  
 2 BENTALL CENTRE  
 VANCOUVER 1, B.C.  
 Re: RENFREW PROPERTY

TYPE OF SAMPLES SOIL  
 No. of SAMPLES 1189  
 FILE No. 344 Our Inv.

SAMPLE No.	OZ. PER TON GOLD	OZ. PER TON SILVER	Cu % PPM	Mo% PPM	%	SAMPLE NO.	Cu PPM	Mo PPM
R8-97			55	tr		R8-131	45	2
98			60	2		132	55	2
99			30	2		133	105	5
100			30	5		134	30	tr
101			20	5		135	30	tr
102			30	2		136	40	tr
103			40	5		137	90	tr
104			40	2		138	40	2
105			60	2		139	30	2
106			55	2		140	80	tr
107			40	2		141	90	tr
108			30	2		142	50	2
109			35	2		143	35	2
110			25	2		144	45	tr
111			40	2		145	70	2
112			45	2		R10- 1	35	2
113			50	2		2	60	tr
114			55	2		3	30	tr
R8-115			35	2		4	55	tr
116			40	2		5	30	tr
117			40	5		6	12	tr
118			50	2		7	35	tr
119			50	5		8	40	tr
120			15	tr		R10- 9	55	tr
121			55	5		10	95	2
122			40	5		11	N 8	N S
124			40	8		12	30	tr
124			855	5		13	20	tr
123			50	2		R8-146	30	2
125			50	2		R10- 0	15	2
126			50	2		R10-14	90	2
127			55	2		15	95	2
128			720	2		16	95	5
129			58	2		17	35	5
130			60	2		18	85	8 5



PROVINCIAL ASSAYER

DATE JULY 10, 1969



SEYMOUR LABORATORY LTD.

147 Riverside Drive, North Vancouver, B.C. Tel. (604) 929-2228

CERTIFICATE OF ANALYSIS

TO QUINTANA MINERALS CORPORATION  
 STE. 1215 - ROYAL TRUST TOWER  
 2 B. ENTALL CENTRE  
 VANCOUVER 1, B.C.

TYPE OF SAMPLES SOIL

No. of SAMPLES

FILE No. ~~XXX~~ 344 Our Inv. 1107

SAMPLE No.	OZ. PER TON GOLD	OZ. PER TON SILVER	Cu % PPM	Mo % PPM	%	SAMPLE NO.	Cu PPM	Mo PPM
A6- 201			95	tr		A7-19	50	2
202			50	tr		20	10	5
203			70	2		21	30	8
204			40	tr		22	30	tr
205			25	2		24	25	tr
206			55	tr		25	30	8
207			20	tr		26	20	5
208			40	tr		27	50	2
209			30	tr		28	55	8
210			60	tr		29	50	25
211			40	tr		30	30	5
212			35	2		31	55	2
213			25	tr		32	25	5
214			55	tr		33	40	5
215			50	2		35	25	5
216			20	2		36	150	tr
A7- 0			20	tr		37	10	tr
1			45	tr		38	10	tr
2			30	tr		39	35	tr
3			30	tr		40	20	2
4			20	2		41	35	5
5			20	2		42	25	5
6			60	2		43	110	5
7			20	2		44	40	2
8			30	8		45	95	2
9			20	5		46	20	tr
10			40	tr		47	60	tr
11			95	tr		48	20	tr
12			135	2		49	70	2
13			40	tr		50	45	2
14			15	2		51	25	2
15			15	2		52	20	tr
16			25	tr		53	20	2
17			75	tr		54	05	2
18			20	25		55	10	2

*J. Chatters*

PROVINCIAL ASSAYER

DATE JULY 10, 1969

SEYMOUR LABORATORY LTD.

147 Riverside Drive, North Vancouver, B.C. Tel. (604) 929-2228

CERTIFICATE OF ANALYSIS

TO QUINTANA MINERALS CORPORATION  
 STE. 1215 - ROYAL TRUST TOWER  
 2 BENTALL CENTRE  
 VANCOUVER 1, B.C.

TYPE OF SAMPLES SOIL

No. of SAMPLES

FILE No. 344 Our Inv. 1107

SAMPLE No.	OZ. PER TON GOLD	OZ. PER TON SILVER	Cu* PPM	Mo % PPM	*	SAMPLE NO.	Cu PPM	Mo PPM
R21-48			80	2		R22- 9	80	2
49			50	tr		10	90	5
50			35	2		11	80	2
R21-51			60	tr		12	80	2
52			115	2		13	86	2
53			140	2		14	70	5
54			70	2		15	105	2
55			115	2		16	50	5
56			80	2		17	50	tr
57			75	2		18	125	tr
58			40	2		19	125	tr
59			75	tr		20	70	2
60			30	tr		21	45	tr
R21-61			60	2		22	120	tr
62			50	2		23	65	tr
63			55	tr		24	100	2
64			80	tr		25	110	tr
65			240	2		26	80	2
66			70	tr		R22-27	40	2
67			88	5		28	50	5
68			150	2		29	52	8
69			200	2		30	45	5
70			85	2		31	50	5
R21-71			225	tr		32	60	5
72			270	2		33	80	5
73			260	tr		34	30	5
R22- 0			60	tr		35	70	5
1			60	5		36	10	tr
2			40	2		R22-37	70	5
3			55	2		38	40	2
4			60	2		39	60	2
5			40	2		40	60	5
6			52	5		41	235	5
7			35	5		42	25	5
8			65	2		43	70	5

*J. Chatterton*

PROVINCIAL ASSAYER

DATE JULY 10, 1969

SEYMOUR LABORATORY LTD.

147 Riverside Drive, North Vancouver, B.C. Tel. (604) 929-2228

No. 344

CERTIFICATE OF ANALYSIS

TO QUINTANA MINERALS CORPORATION  
 STE. 1215 - ROYAL TRUST TOWER  
 2 BENTALL CENTRE  
 VANCOUVER 1, B.C.

TYPE OF SAMPLES Soil  
 No. of SAMPLES .....  
 FILE No. ~~XXX~~ 344 Our Inv. 1107

SAMPLE No.	OZ. PER TON GOLD	OZ. PER TON SILVER	Cu% PPM	Mo % PPM	%	SAMPLE NO.	Cu PPM	Mo PPM
R22-44			NSS	NSS		R26-20	50	2
45			70	5		21	40	2
46			80	5		22	20	tr
R22-47			55	5		23	35	5
48			75	2		24	30	5
49			95	5		25	60	2
50			115	5		26	65	2
51			120	5		27	40	5
52			180	2		28	35	2
53			140	5		29	40	2
54			150	2		30	15	4
55			100	2		31	55	2
56			90	2		32	40	5
R22-57			380	2		33	40	2
58			365	2		34	70	5
R26- 0			80	5		R22-67	170	5
1			80	5		68	120	2
2			500	5		R24- 0	65	2
3			340	5		1	80	tr
4			65	2		2	45	5
5			55	2		3	50	tr
6			345	5		4	70	2
7			50	2		5	60	2
8			50	tr		6	55	5
9			60	tr		7	80	5
10			50	2		R22-59	420	tr
11			70	2		60	530	2
12			45	5		61	310	2
13			60	5		62	75	5
14			60	5		63	320	5
15			40	2		64	2600	25
R26-16			35	2		65	138	5
17			35	2		66	115	2
18			35	2		R24- 8	40	5
19			50	2		9	35	2

*J. Chatter* PROVINCIAL ASSAYER

DATE JULY 10, 1969

SEYMOUR LABORATORY LTD.

147 Riverside Drive, North Vancouver, B.C. Tel. (604) 929-2228

CERTIFICATE OF ANALYSIS

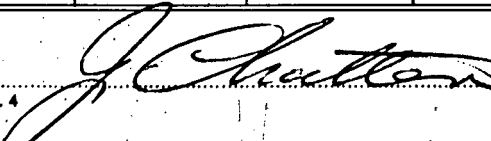
TO QUINTANA MINERALS CORPORATION  
STE. 1215 ROYAL TRUST TOWER  
2 BENTALL CENTRE  
VANCOUVER 1, B.C.

TYPE OF SAMPLES SOILS

No. of SAMPLES .....

FILE No. 344 Our Inv. 1107

SAMPLE No.	OZ. PER TON GOLD	OZ. PER TON SILVER	Cu % PPM	Mo % PPM	%	SAMPLE NO.	Cu PPM	Mo PPM	Zn PPM
A11-35			100	tr		A12-22	40	tr	
36			30	tr		23	30	tr	
37			25	tr		24	45	2	
38			20	tr		DP-197	15	5	
39			30	tr		198	65	5	
A11-40			30	2		199	45	2	
41			50	2		200	20	2	
42			55	tr		201	55	2	
43			90	5		202	70	tr	
44			70	5		203	105	tr	
45			40	2		204	35	tr	
46			45	2		206	50	tr	
47			35	2		207	60	2	
48			50	2		208	115	5	
49			35	2		209	55	8	
A12- 1			70	2		DP-210	35	2	
2			80	2		211	80	2	45
4			50	2		212	80	2	30
5			55	tr		213	50	2	25
6			40	tr		214	130	5	30
7			40	tr		215	105	5	35
8			60	tr		216	55	5	30
9			25	tr		217	70	5	35
10			60	tr		218	80	5	20
11			60	tr		219	140	5	75
12			60	2		DP-210	75	tr	35
13			80	2		221	40	tr	30
14			40	2		222	30	tr	20
15			70	5		223	40	2	25
16			50	tr		224	45	tr	35
17			50	tr		225	60	2	55
18			60	tr		226	25	2	20
19			55	tr		227	45	2	50
20			40	tr		228	35	2	4
21			70	tr		229	20	2	3

Form SL 4  PROVINCIAL ASSAYER DATE JULY 10, 1969

SEYMOUR LABORATORY LTD.

147 Riverside Drive, North Vancouver, B.C. Tel. (604) 929-2228

CERTIFICATE OF ANALYSIS

TO: QUINTANA MINERALS CORPORATION  
 STE. 1215 ROYAL TRUST TOWER  
 2 BENTALL CENTRE  
 VANCOUVER 1, B.C.

TYPE OF SAMPLES Soil

No. of SAMPLES 1189

FILE No. 344 Our Inv. 1107

Re: Renfrew Property

SAMPLE No.	OZ. PER TON GOLD	OZ. PER TON SILVER	Cu % PPM	Mo % PPM	%	SAMPLE NO.	Cu PPM	Mo PPM
R15- 11			40	2		R13- 26	10	2
12			60	2		R15- 46	90	tr
13			55	tr		47	50	tr
14			70	tr		48	80	2
15			55	2		49	50	5
16			60	2		50	100	5
17			40	2		51	95	2
18			45	5		52	20	2
19			60	5		53	50	tr
R15- 20			62	2		54 <del>XX</del>	70	2
21			55	2		55	65	2
22			50	5		56	110	2
23			40	5		57	120	tr
24			70	5		58	50	2'
25			30	2		59	50	2'
26			60	2	R 15	60	50	2
27			20	2		61	65	5
28			30	2		62	60	2
29			30	2		63	40	8
30			50	5		64	55	8
31			40	5		65	20	5
32			50	2		66	45	2
33			70	2		67	15	5
34			80	5		68	55	8
35			110	2		69	60	5
36			130	2	R15	70	60	5
37			60	2		71	75	5
38			30	2		72	70	2
39			30	2		73	60	2
R15- 40			60	5		74	75	2
41			75	2		75	95	2
42			130	2	R16-	0	60	2
43			40	2		1	55	5
44			55	2		2	55	tr
45			80	5		3	35	5

*J. Chatter*

PROVINCIAL ASSAYER

DATE JULY 10, 1969

SEYMOUR LABORATORY LTD.

147 Riverside Drive, North Vancouver, B.C. Tel. (604) 929-2228

CERTIFICATE OF ANALYSIS

TO.....QUINTANA MINERALS CORPORATION.....  
 STE. 1215 - ROYAL TRUST TOWER  
 2 BENTALL CENTRE  
 VANCOUVER 1, B.C.  
 Re: RENFREW PROPERTY

TYPE OF SAMPLES.....SOIL.....  
 No. of SAMPLES 1189  
 FILE No. 344 Our Inv. 1107

SAMPLE No.	OZ. PER TON GOLD	OZ. PER TON SILVER	Cu % PPM	Mo % PPM	%	SAMPLE NO.	Cu PPM	Mo PPM
R14-145			580	5		R14- 181	60	2
146			90	2		182	55	2
147			200	2		183	70	2
148			120	5		184	60	2
149			120	2		185	50	2
150			180	2		186	60	tr
151			165	2		187	85	2
152			110	2		188	80	2
153			100	2		189	110	2
154			630	2		190	110	2
155			150	tr		191	50	tr
156			120	tr		192	90	tr
157			90	2		193	80	5
158			55	2		195	65	tr
159			95	2		R14 196	60	2
161			100	tr		197	60	2
162			60	tr		198	50	2
163			40	tr		199	40	tr
164			35	ytr		200	40	tr
165			100	2		201	50	tr
166			55	2		202	60	tr
167			65	tr		203	125	2
168			80	tr		204	85	2
169			80	tr		205	50	2
170			60	tr		R15 0	45	2
171			45	tr		1	110	2
172			50	tr		2	55	2
173			70	tr		3	35	tr
174			70	2		4	60	tr
R14-175			40	2		5	30	5
176			55	2		6	40	8
177			50	tr		7	55	5
178			85	5		8	40	5
179			55	2		9	80	2
180			60	5		R15 10	45	2

JULY 10, 1969

SEYMOUR LABORATORY LTD.

147 Riverside Drive, North Vancouver, B.C. Tel. (604) 929-2228

CERTIFICATE OF ANALYSIS

TO QUINTANA MINERALS CORPORATION  
STE. 1215 Royal Trust Tower  
2 Bentall Centre  
VANCOUVER 1, B.C.

TYPE OF SAMPLES SOIL

No. of SAMPLES 1189

FILE No. 344 Our ,nv. 1107  
Page 14 of 18

SAMPLE No.	OZ. PER TON GOLD	OZ. PER TON SILVER	Cu % PPM	Mo % PPM	%	%			
R19-16			60	tr					
17			45	2					
18			60	2					
19			70	2					
20			55	2					
21			40	5					
22			50	2					
23			45	5					
24			70	2					
25			110	5					
26			120	2					
27			60	2					
28			40	2					
29			35	2					
R19-30			40	2					
31			40	5					
32			40	2					
33			40	2					
34			40	2					
35			45	2					
36			40	2					
37			40	2					
38			40	2					
39			35	tr					
R20- 0			40	tr					

*J. Chatterton*

PROVINCIAL ASSAYER

JULY 10, 1969

DATE

SEYMOUR LABORATORY LTD.

147 Riverside Drive, North Vancouver, B.C. Tel. (604) 929-2228

CERTIFICATE OF ANALYSIS

TO QUINTANA MINERALS CORPORATION  
 STE. 1215 ROYAL TRUST TOWER  
 2 BENTALL CENTRE  
 VANCOUVER 1, B.C.

TYPE OF SAMPLES SOIL

No. of SAMPLES 1189

FILE No. 344 Our Inv. 1107

SAMPLE No.	OZ. PER TON GOLD	OZ. PER TON SILVER	Cu % PPM	Mo % PPM	%	SAMPLE NO.	Cu PPM	Mo PPM
R16- 4			60	8		R18-11	40	2
5			70	2		12	50	5
6			40	5		13	40	2
7			55	tr		14	50	2
8			40	tr		15	40	2
9			65	2		16	55	2
R16-10			35	2		17	50	2
11			65	10		18	45	2
12			50	tr		R18-19	50	2
13			50	2		20	110	2
14			55	tr		21	95	2
15			100	2		22	50	2
R 17			40	5		23	60	tr
-17- 0			65	tr		24	100	2
1			50	2		25	140	2
2			30	tr		26	130	5
R17- 3			40	tr		27	45	2
4			35	2		28	60	tr
5			20	tr		29	50	tr
6			25	5		R19-0	35	tr
7			40	5		1	40	tr
8			105	5		2	70	tr
9			60	2		3	30	2
R18- 0			20	2		4	30	2
1			55	2		5	40	2
2			40	2		6	20	tr
3			60	5		7	15	tr
4			30	2		8	20	tr
5			20	2		9	70	2
6			40	2		R19-10	50	2
7			20	2		11	25	tr
8			40	2		12	40	2
9			20	2		13	35	2
R18- 9			40	10		14	50	tr
10			55	2		15	70	tr
			45	2				

*J. Chatter*

PROVINCIAL ASSAYER

DATE

JULY 10, 1969



SEYMOUR LABORATORY LTD.

147 Riverside Drive, North Vancouver, B.C. Tel. (604) 929-2228

N<sup>o</sup> 352

CERTIFICATE OF ANALYSIS

TO QUINTANA MINERALS CORPORATION  
 STE. 1215 - ROYAL TRUST TOWER  
 2 BENTALL CENTRE  
 VANCOUVER 1, B.C.

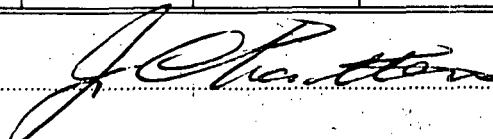
TYPE OF SAMPLES SOIL

No. of SAMPLES 650

FILE No. 352 Our inv. 1089

Re: RENFREW PROJECT

SAMPLE No.	OZ. PER TON GOLD	OZ. PER TON SILVER	Cu PPM	Mo % PPM	%	SAMPLE NO.	Cu PPM	Mo PPM
AB3- 1			70	2		A4-45	60	2
2			35	5		46	110	2
3			45	2		47	40	2
4			55	2		48	100	2
5			40	5		49	75	tr
6			60	tr		A4-50	95	2
7			30	tr		51	60	tr
8			60	2		52	90	2
9			70	5		BL2-33	80	2
10			15	2		34	95	2
11			20	5		35	60	2
12			10	tr		36	70	tr
13			25	2		37	50	2
14			35	2		38	40	2
15			20	tr		39	180	2
16			60	tr		BL2-39	80	2
17			50	tr		40	120	2
18			60	2		41	40	2
20			55	5		42	65	tr
21			95	2		43	65	tr
22			60	tr		44	75	tr
23			55	5		85	50	5
24			70	5		46	85	2
25			30	tr		47	60	2
26			30	tr		48	50	2
27			55	tr		BL2-49	55	5
28			50	5		5	50	5
30			125	5		51	80	tr
31			150	2		BL1-	180	8
29			185	tr		2	105	2
A4- 40			230	tr		3	120	18
41			100	2		4	380	20
42			115	5		5	60	tr
43			15	5		6	50	2
44			65	tr		7	30	2



PROVINCIAL ASSAYER

DATE JULY 14, 1969

SEYMOUR LABORATORY LTD.

147 Riverside Drive, North Vancouver, B.C. Tel. (604) 929-2228

Page #2.

CERTIFICATE OF ANALYSIS

TO QUINTANA MINERALS CORPORATION  
 STE. 1215 - ROYAL TRUST TOWER  
 2 BENTALL CENTRE  
 VANCOUVER 1, B.C.

TYPE OF SAMPLES SOIL

No. of SAMPLES 650

FILE No. 352 Our Inv. 1089

SAMPLE No.	OZ. PER TON GOLD	OZ. PER TON SILVER	Cu % PPM	Moo% PPM	%	SAMPLE NO.	Cu PPM	Mo PPM
B1- 8			25	2		B2- 14	40	tr
9			40	tr		15	35	2
10			45	tr		16	30	5
11			180	2		17	25	5
12			180	tr		18	30	5
13			90	tr		19	20	5
14			50	2		B2- 20	30	2
15			195	2		21	35	5
16			350	2		22	30	2
17			190	5		23	50	2
18			60	2		24	25	2
19			65	2		25	65	2
20			60	2		26	50	2
21			55	2		27	50	tr
22			110	2		28	65	2
23			15	tr		29	52	2
24			10	2		B2- 30	60	2
25			100	5		B3- 0	80	2
26			130	2		1	35	5
27			80	5		2	65	tr
B1- 28			60	2		3	80	5
29			40	2		4	60	5
30			55	2		5	115	10
31			145	tr		6	80	5
B2- 0			140	2		7	80	2
1			135	2		8	160	5
2			60	2		9	70	5
3			55	2		10	40	5
4			50	5		11	60	2
5			40	2		12	80	5
7			40	2		13	55	2
9			30	tr		14	60	2
10			55	10		15	640	2
12			10	tr		16	18	5
13			40	5		17	30	2

*J. Chatterton*

PROVINCIAL ASSAYER

DATE JULY 14, 1969

SEYMOUR LABORATORY LTD.

147 Riverside Drive, North Vancouver, B.C. Tel. (604) 929-2228

Page #3.

CERTIFICATE OF ANALYSIS

TO QUINTANA MINERALS CORPORATION  
 STE. 1215 - ROYAL TRUST TOWER  
 2 BENTALL CENTRE  
 VANCOUVER 1, B.C.

TYPE OF SAMPLES SOIL  
 No. of SAMPLES 650  
 FILE No. 352 Our inv. 1089

Re: Renfrew Project

SAMPLE No.	OZ. PER TON GOLD	OZ. PER TON SILVER	Cu % PPM	Mo % PPM	%	SAMPLE NO	CU PPM	Mo PPM
B3- 18			25	2		B4- 28	40	5
19			25	2		29	60	2
20			115	2		30	60	5
21			10	tr		31	40	5
22			45	5		33	40	5
23			20	5		B4- 34	40	5
24			45	2		35	55	2
25			95	tr		36	45	2
B4- 0			70	5		37	40	2
1			80	5		B5- 1	20	2
2			55	2		2	25	2
3			25	5		3	20	tr
4			60	2		4	30	2
5			60	5		5	55	tr
6			50	2		6	325	tr
7			60	5		B5- 7	40	tr
8			50	5		8	100	2
9			50	5		9	95	5
10			35	5		10	30	tr
11			25	2		11	15	tr
B4- 12			20	2		12	40	2
13			35	2		13	75	5
14			30	2		14	110	5
15			10	2		15	150	2
16			10	2		16	90	5
17			20	2		B5- 17	65	tr
18			45	5		18	125	2
19			110	2		19	170	5
20			55	5		20	120	5
21			90	2		21	110	5
B4- 22			60	5		22	120	tr
23			60	2		23	155	5
25			50	2		24	120	5
26			45	2		25	175	5
27			55	5		26	100	5

*J. Chatter*  
 Form SL 4

PROVINCIAL ASSAYER

DATE JULY 14, 1969

SEYMOUR LABORATORY LTD.

147 Riverside Drive, North Vancouver, B.C. Tel. (604) 929-2228

Page #4.

CERTIFICATE OF ANALYSIS

TO: QUINTANA MINERALS CORPORATION  
 STE. 1215 - ROYAL TRUST TOWER  
 2 BENTALL CENTRE  
 VANCOUVER 1, B/C.  
 Re: RENFREW PROJECT

TYPE OF SAMPLES SOIL  
 No. of SAMPLES 650  
 FILE No. 352 Our Inv. 1089

SAMPLE No.	OZ. PER TON GOLD	OZ. PER TON SILVER	Cu % PPM	Mo % PPM	%	SAMPLE NO.	Cu PPM	Mo PPM
B5- 27			50	5		B6- 12	30	5
28			95	5		13	30	5
29			100	2		14	20	2
30			60	2		15	50	5
31			100	5		B6- 16	50	tr
32			80	2		17	85	2
33			60	2		18	30	2
34			100	5		19	70	2
35			165	5		20	30	2
36			200	5		21	20	tr
B5- 37			110	2		22	30	2
38			70	5		23	30	5
39			80	5		24	35	2
40			35	2		25	30	2
41			80	2		26	30	2
42			130	2		27	20	2
43			60	2		28	30	5
44			110	tr		29	10	2
45			150	2		30	15	tr
46			75	2		B7- 0	40	5
47			40	2		1	55	2
48			130	tr		2	45	2
49			200	tr		3	60	2
50			100	2		4	40	2
B6- 0			35	5		B7- 5	90	2
1			40	5		6	60	tr
2			20	5		7	40	5
3			40	5		8	40	2
4			65	5		9	56	tr
5			20	2		10	40	5
B6- 6			85	2		11	50	2
7			40	2		12	45	2
8			30	2		13	50	5
9			20	tr		14	130	tr
10			25	2		B7-15	230	tr
11			35	2				

*J. Chatter* PROVINCIAL ASSAYER DATE: JULY 14, 1969  
 Form SL 4

SEYMOUR LABORATORY LTD.

147 Riverside Drive, North Vancouver, B.C. Tel. (604) 929-2228

Page #5.

CERTIFICATE OF ANALYSIS

TO QUINTANA MINERALS CORPORATION  
 STE. 1215 - ROYAL TRUST TOWER  
 2 BENTALL CENTRE  
 VANCOUVER 1, B.C.

TYPE OF SAMPLES SOIL  
 No. of SAMPLES 650  
 FILE No. 352 Our Inv. 1089

SAMPLE No.	OZ. PER TON GOLD	OZ. PER TON SILVER	Cu PPM	Mo % PPM	%	SAMPLE NO.	Cu PPM	Mo PPM
B6-31	10		15	tr		B7-31	20	2
32		30	5		32	50	2	
33		10	tr		33	30	5	
34		20	5		34	150	5	
35		20	2		B7-35	20	tr	
36		10	2		36	50	tr	
39		25	2		37	15	2	
37		40	2		38	35	tr	
38		20	2		40 38	20	2	
B6-40		15	2		41	30	2	
42		20	tr		42	30	tr	
41		20	5		43	40	2	
43		20	2		44	30	5	
44		20	2		45	30	2	
45		30	2		B7-46	40	2	
46		18	5		47	20	2	
47		10	5		48	40	tr	
48		5	2		DP-330	290	5	
49		10	2		331	50	2	
B6-50		40	tr		332	125	5	
B7-16		170	tr		333	70	2	
17		85	5		334	95	tr	
18		35	5		335	65	tr	
19		45	5		336	100	2	
20		60	5		DB-337	80	2	
21	50	2		338	180	2		
22	65	2		339	180	2		
23	70	2		340	100	2		
24	50	2		341	260	2		
B7-25	80	2		342	220	5		
26	45	tr		343	150	2		
27	80	tr		344	150	tr		
28	105	2		345	80	2		
29	20	2		346	140	2		
#)	30	2		DP-347	180	tr		

*J. Chilton*

PROVINCIAL ASSAYER

DATE JULY 14, 1969

SEYMOUR LABORATORY LTD.

147 Riverside Drive, North Vancouver, B.C. Tel. (604) 929-2228

Page #9.

CERTIFICATE OF ANALYSIS

TO QUINTANA MINERALS CORPORATION  
 STE. 1215 - ROYAL TRUST TOWER  
 2 BENTALL CENTRE  
 VANCOUVER 1, B.C.

TYPE OF SAMPLES SOIL

No. of SAMPLES 650

FILE No. 352 Our Inv. 1089

SAMPLE No.	OZ. PER TON GOLD	OZ. PER TON SILVER	Cu X PPM	Mo* PPM	XMo PPM	%	SAMPLE NO.	Cu PPM	Mo PPM
R31- 35			50	8			R33- 9	50	2
36			280	5			10	60	tr
37			55	5			11	45	tr
38			45	tr			12	60	tr
R32- 1			100	2			R34- 1	45	2
2			160	2			2	55	tr
0 3			115	2			3	50	2
R32- 3			45	2			4	8885	tr
4			30	2			5	35	2
5			125	2			6	85	tr
6			150	tr			7	50	2
7			30	tr			8	55	2
8			65	2			9	25	2
9			40	tr			10	40	5
10			95	tr			11	60	5
11			80	tr			12	100	2
12			75	tr			13	25	tr
R32- 13			160	2			14	115	tr
14			85	2			15	45	tr
15			65	2			16	100	2
16			100	2			17	150	tr
17			80	2			18	60	tr
18			95	tr			19	80	2
19			50	tr			20	75	2
20			60	tr			21	90	tr
21			95	2			22	125	5
R33- 0			45	2			R34-23	80	2
R33- 1			65	tr			24	80	5
2			40	tr			25	75	5
3			60	2			26	680	tr
4			25	2			27	110	2
5			90	2			28	125	2
6			55	2			R34-29	75	8
7			35	tr			30	50	2
8			50	tr			31	60	2
							32	50	2

*J. Chetters*

PROVINCIAL ASSAYER

DATE JULY 14, 1969

SEYMOUR LABORATORY LTD.

147 Riverside Drive, North Vancouver, B.C. Tel. (604) 929-2228

Page #8

CERTIFICATE OF ANALYSIS

TO QUINTANA MINERALS CORPORATION  
 STE. 1215 - ROYAL CRUST TOWER  
 2 BENTALL CENTRE  
 VANCOUVER, B.C.

TYPE OF SAMPLES SOIL  
 No. of SAMPLES ~~888~~ 650  
 FILE No. 352 Our Inv. 1089

SAMPLE No.	OZ. PER TON GOLD	OZ. PER TON SILVER	% Cu PPM	Mo % PPM	SAMPLE NO.	Cu PPM	Mo PPM
R30- 17			60	tr	R30-41	10	2
18			50	2	R31- 1	80	tr
19			25	tr	2	65	2
20			50	2	3	110	2
21			45	tr	4	60	5
22			60	2	5	115	2
23			45	2	6	55	2
24			50	tr	7	75	2
25			20	2	8	50	2
26			20	tr	9	55	5
27			15	2	10	60	tr
28			35	tr	11	45	2
29			20	2	12	35	tr
30			20	2	13	70	tr
31			120	tr	14	50	2
32			40	tr	15	65	2
33			25	2	16	80	tr
R- 34			15	2	17	50	10
30- 35			55	tr	18	280	5
37			40	2	19	165	2
38			30	2	20	140	2
39			30	2	21	65	5
42			30	2	R31-22	40	2
43			30	tr	23	210	5
44			10	tr	24	90	8
45			10	tr	25	60	2
46			20	tr	26	340	2
47			45	5	27	60	5
48			265	2	28	50	2
49			160	tr	29	150	5
50			45	tr	30	190	2
51			45	2	31	10	2
52			135	tr	32	140	2
53			130	tr	33	200	5
40			10	2	34	85	5

*J. Chatter*

PROVINCIAL ASSAYER

DATE JULY 14, 1969

SEYMOUR LABORATORY LTD.

147 Riverside Drive, North Vancouver, B.C. Tel. (604) 929-2228

CERTIFICATE OF ANALYSIS

TO: QUINTANA MINERALS CORPORATION  
 STE. 1215 - ROYAL TRUST TOWER  
 2 BENTALL CENTRE  
 VANCOUVER 1, B.C.

TYPE OF SAMPLES: SOIL

No. of SAMPLES: 650

FILE No. 352 Our Inv. 1089

SAMPLE No.	OZ. PER TON GOLD	OZ. PER TON SILVER	CuX PPM	Mo % PPM	%	SAMPLE NO	Cu PPM	Mo PPM
R23-17			30	tr		R29- 1	100	tr
18			35	tr		2	180	2
R27-OA			50	5		3	195	tr
1A			400	2		4	245	2
R27- 0			145	5		5	240	2
1			22	tr		6	140	2
2			120	tr		7	125	tr
3			110	5		8	100	tr
4			10	tr		9	180	tr
5			90	2		10	80	2
6			60	tr		11	120	tr
7			50	tr		12	65	2
8			80	tr		13	155	2
9			170	2		R29-14	110	2
10			260	2		15	110	tr
11			34	tr		16	200	tr
12			58	2		17	140	tr
14			110	2		18	150	2
R27-15			110	tr		19	280	tr
16			30	2		R30- 0	110	5
17			55	5		1	50	2
18			50	2		2	64	tr
19			90	tr		3	160	tr
20			90	2		4	65	2
21			75	2		5	50	tr
22			115	tr		6	260	tr
23			60	tr		7	90	tr
R28- 0			40	5		8	90	2
R28- 1			60	2		9	170	2
2			50	2		10	70	tr
3			45	tr		11	50	2
4			40	tr		12	85	2
5			55	tr		13	640	tr
6			60	tr		R30-14	60	tr
R29- 0			110	tr		15	55	tr
						16	60	2

*J. Chatter*

PROVINCIAL ASSAYER

DATE: JULY 14, 1969



SEYMOUR LABORATORY LTD.

147 Riverside Drive, North Vancouver, B.C. Tel. (604) 929-2228

Page 46.

CERTIFICATE OF ANALYSIS

TO QUINTANA MINERALS CORPORATION  
 STE. 1215 - ROYAL TRUST TOWER  
 2 BENTALL CENTRE  
 VANCOUVER 1, B.C.

TYPE OF SAMPLES SOIL

No. of SAMPLES 650

FILE No. 352 Our Inv. 1089

SAMPLE No.	OZ. PER TON GOLD	OZ. PER TON SILVER	Cu % PPM	Mo % PPM	SAMPLE NO.	Cu PPM	Mo PPM
					R15-89	75	tr
DP- 348			310	tr	90	110	5
349			100	tr	91	335	5
350			110	2	92	180	2
351			90	2	93	160	2
352			160	5	94	50	tr
353			90	2	95	105	tr
354			145	2	96	30	tr
355			95	ttr	97	55	tr
356			40	2	R18-30	60	2
DP-357			115	2	31	60	tr
358			35	2	32	135	tr
359			35	tr	33	60	tr
360			165	2	34	75	tr
361			90	5	35	30	2
362			30	tr	36	55	2
363			90	2	37	95	2 5
364			50	2	38	50	8
365			30	tr	39	70	tr
366			30	5	R23-0	70	2
367			35	tr	1	50	2
368			35	2	2	40	tr
369			35	5	3	40	tr
R15-76			80	5	4	55	tr
77			90	8	5	40	tr
78			60	2	6	35	tr
79			70	5	7	40	tr
80			80	5	8	35	tr
81			70	2	9	40	2
82			70	2	10	55	tr
R15-83			90	5	11	40	tr
84			60	5	12	30	tr
85			80	2	13	55	2
86			80	tr	14	45	tr
87			150	2	R23-15	30	2
88			20	5	16	40	2

*J. Patton*

PROVINCIAL ASSAYER

DATE

JULY 14, 1969

SEYMOUR LABORATORY LTD.

147 Riverside Drive, North Vancouver, B.C. Tel. (604) 929-2228

CERTIFICATE OF ANALYSIS

TO Quintana Minerals Corporation  
Ste. 1215 - Royal Trust Tower  
2 Bentall Centre  
VANCOUVER 1, B.C.

TYPE OF SAMPLES B SOIL

No. of SAMPLES 650

FILE No. 352 Our Inv. 1089

SAMPLE No.	OZ. PER TON GOLD	OZ. PER TON SILVER	Cu <sup>%</sup> PPM	Mo <sup>%</sup> PPM	Mo <sup>%</sup> PPM	%			
R34-33			105	8					
34			105	2					
35			90	tr					
36			60	2					
37			65	5					
38			85 tr	tr					
R34-39			95	tr					
40			80	2					
41			30	tr					
42			40	5					
43			55	2					
44			80	2					
45			45	2					
46			55	2					
B2- 11			14	5					
B31- 0			40	2					

Form SL 4 *J. Chatter* PROVINCIAL ASSAYER DATE JULY 14, 1969

SEYMOUR LABORATORY LTD.

147 Riverside Drive, North Vancouver, B.C. Tel. (604) 929-2228

N<sup>o</sup> 396

CERTIFICATE OF ANALYSIS

TO QUINTANA MINERALS CORPERATION  
# 1215 ROYAL TRUST TOWER  
2 BENTAL CENTER

TYPE OF SAMPLES SOIL  
 No. of SAMPLES 276  
 FILE No. Port Andrew.

SAMPLE No.	OZ. PER TON GOLD	OZ. PER TON SILVER	Cu ppm	Mo ppm	%	Cu ppm	Mo ppm
A13-1			35	tr	R45-28	25	tr
A13-1			55	tr	29	35	tr
2			30	tr	30	65	tr
3			25	tr	31	45	tr
4			30	tr	32	35	tr
5			65	tr	33	30	tr
6			80	tr	34	70	2
R45-0			95	tr	35	65	tr
1			65	tr	36	35	tr
2			90	tr	37	45	2
3			35	tr	38	45	2
4			60	5	39	55	tr
5			105	8	40	95	2
6			45	tr	51.8	115	tr
7			55	tr	52.0	95	tr
8			40	tr	52.2	60	tr
9			70	tr	52.2E	55	tr
10			55	tr	52.4E	175	tr
11			45	tr	6E	185	tr
12			40	tr	8E	90	tr
13			70	2	53.0	140	tr
14			50	2	53.2	145	tr
15			60	tr	46.2n		
16			70	2	58.0e	50	tr
17			75	tr	46.4n		
18			55	2	58.0e	55	2
19			85	tr	.6n	80	tr
20			70	tr	.8n	80	2
21			50	tr	47.0n	100	2
22			55	tr	.2n	30	tr
23			40	tr	.4n	85	tr
24			40	tr	.6n	45	tr
25			50	tr	.8n	110	tr
26			70	tr	XXXXXX		
27			45	tr	48.0n	70	tr

SEYMOUR LABORATORY LTD.

147 Riverside Drive, North Vancouver, B.C. Tel. (604) 929-2228

CERTIFICATE OF ANALYSIS

TO .....

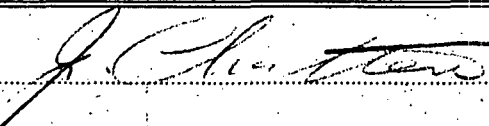
TYPE OF SAMPLES .....

No. of SAMPLES .....

FILE No. 396 .....

SAMPLE No.	OZ. PER TON GOLD	OZ. PER TON SILVER	Cu ppm	Mo ppm	%	Cu ppm	Mo ppm
48.2n			40	2	57.4e	155	tr
.4n			35	tr	.6e	65	5
.6n			75	tr	.8e	95	tr
.8n			85	tr	58.0e	100	tr
48.8n					.2e	80	tr
56.6e			75	tr	.4e	145	tr
.8e			80	tr	32500n		
57.0e			35	2	52.2e	70	tr
.2e			40	tr	.4e	85	tr
.4e			60	tr	.6e	70	tr
.6e			40	tr	.8e	70	tr
.8e			70	tr	53.0	95	tr
31000n					2e	ns	
52.2e			65	tr	.4e	160	tr
.6e			95	tr	.6e	95	tr
.8e			50	2	.8e	105	tr
53.0e			60 t	tr	54.0	105	tr
.2e			95	2	.2e	95	tr
.4e			70	2	.4e	55	tr
.6e			155	tr	.6e	95	tr
.8e			100	tr	.8e	105	tr
54.0e			85	tr	55.0e	125	tr
.2e			130	2	.2e	105	tr
.4e			70	2	.4e	100	2
.6e			95	2	.6e	160	tr
.8e			90	2	.8e	95	tr
55.0e			65	2	56.0e	20	tr
.2e			190	2	.2e	95	tr
.4e			95	tr	.4e	100	tr
.6e			100	tr	.6e	285	tr
.8e			210	tr	32500n		
56.2e			160	tr	56.8e	245	tr
.4e			155	tr	57.0e	60	tr
.6e			100	tr	.2e	110	tr
.8e			100	tr	.4e	115	tr

XXXXX 57.2e


 PROVINCIAL ASSAYER Cu ppm Mo ppm DATE JUL 31 1969  
 Form SL 4 57.4e 155 tr

SEYMOUR LABORATORY LTD.

147 Riverside Drive, North Vancouver, B.C. Tel. (604) 929-2228

CERTIFICATE OF ANALYSIS

TO .....

TYPE OF SAMPLES .....

No. of SAMPLES .....

FILE No. **396**

SAMPLE No.	OZ. PER TON GOLD	OZ. PER TON SILVER	Cu ppm	Mo ppm	%	%	Cu ppm	Mo ppm
51.2e			100	8		53.4e	40	5
.4e			115	2		.6e	40	5
.6e			400	5		.8	40	5
.8e			85	2		47500n		
52.0e			55	10		54.0e	120	5
.2e			90	2		.2	65	2
.4e			80	2		.4	60	tr
.6e			170	5		.6	60	2
.8e			70	2		.8	110	tr
53.0e			30	5		55.0	40	2
.2e			50	2		.2	70	2
.4e			70	2		.4	130	5
.6e			75	2		47500n		
54.0e			60	2		56.8e	40	2
.2e			70	2		49000n		
.4e			60	tr		46.6e	35	tr
.6e			45	tr		.8	30	2
.6e			80	tr		47.4	30	2
8e			90	2		.6	30	2
55.2e			70	2		.8	30	2
.4e			70	<del>2</del>		48.0	45	2
46200n						.2	50	2
45.6e			15	2		.2	60	5
47500n						.4	60	8
51.0e			40	5		.4	30	2
.2e			15	2		.6	70	5
.4e			30	2		.8	50	2
.6e			20	2		49000n		
.8e			15	2		49.0e	30	2
52.0e			40	5		.2	80	2
.2e			15	tr		.4	55	12
.4e			25	2		.8	235	2
.6e			45	2		50.0	135	2
.8e			40	5		.2e	20	2
53.2e			25	2		.4	220	2

Form SL 4 *J. O. Hunter* PROVINCIAL ASSAYER DATE **JUL 31 1969**

SEYMOUR LABORATORY LTD.

147 Riverside Drive, North Vancouver, B.C. Tel. (604) 929-2228

CERTIFICATE OF ANALYSIS

TO .....

TYPE OF SAMPLES .....

No. of SAMPLES .....

FILE No. **396** .....

SAMPLE No.	OZ. PER TON GOLD	OZ. PER TON SILVER	Cu ppm	Mo ppm	%	%	Cu ppm	Mo ppm
57.6e			160	tr		42.4e	90	2
.8e			120	tr		.6e	105	2
58.0e			100	tr		.8e	100	2
.2e			110	tr		43.0e	90	5
.4e			105	tr		.2e	95	2
35500n						.4e	50	2
47.2e			95	tr		.6e	70	2
.4e			55	tr		.8e	100	2
.6e			620	tr		44.0e	180	2
.8e			55	tr		.2e	105	2
.0e			95	tr		.4e	140	2
.2e			60	2		.6e	80	2
.4e			40	tr		.8e	80	2
.6e			135	tr		45.0e	100	2
.8e			145	tr		.2e	70	2
49.0e			130	tr		.4e	65	2
2e			115	tr		.6e	100	2
.4e			260	tr		.8e	130	2
.6e			110	tr		46.0e	60	2
.8e			145	tr		42600n		
50.2e			55	tr		45.8e	45	2
.4e			50	tr		46.0e	60	2
.6e			65	tr		42800n		
.8e			40	tr		456e	45	2
51.0e			120	tr		43000n		
.2e			115	tr		45.6e	50	2
.4e			100	tr		43200n		
.6e			100	2		45.6e	20	2
38500n						43400n		
41.2e			35	2		45.6e	60.	2
.4e			40	2		.8e	50	2
.6e			25	2		46.0e	25	tr
.8e			75	2		46000n		
42.0e			50	2		50.8e	55	5
.2e			70	5		51.0e	50	5

*J. Chilton*

PROVINCIAL ASSAYER

DATE

JUL 31 1968

SEYMOUR LABORATORY LTD.

147 Riverside Drive, North Vancouver, B.C. Tel. (604) 929-2228

CERTIFICATE OF ANALYSIS

TO .....

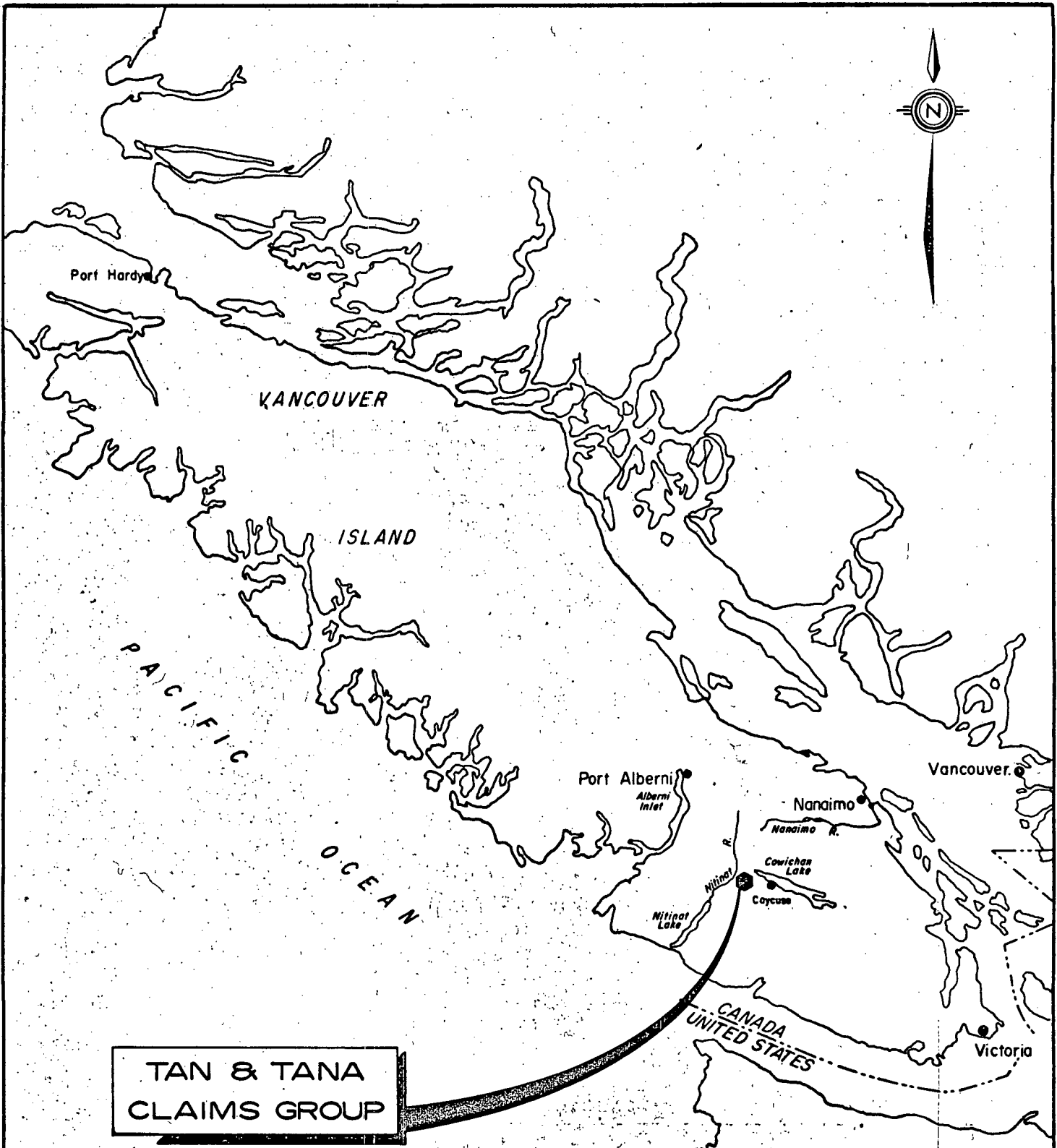
TYPE OF SAMPLES .....

No. of SAMPLES .....

FILE No. **396** .....

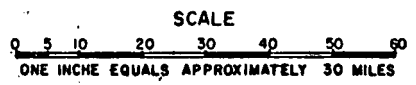
SAMPLE No.	OZ. PER TON GOLD	OZ. PER TON SILVER	Cu ppm	Mo ppm	%	%			
50.6			220	2					
.8			400	2					
51.0			340	5					
.2			380	5					
.4			10	2					
.6			65	2					
.8			150	2					
49000n									
52.0e			80	2					
.2			90	2					
000E									
34.2n			120	2					
.4			60	2					
.6			90	2					
.8			145	2					
35.0			160	2					
.2			125	tr					
.4			70	2					
.5			150	2					

*J. Charters*



**TAN & TANA  
CLAIMS GROUP**

QUINTANA MINERALS CORPORATION  
PORT RENFREW, CENTRAL VANCOUVER ISLAND  
LOCATION MAP

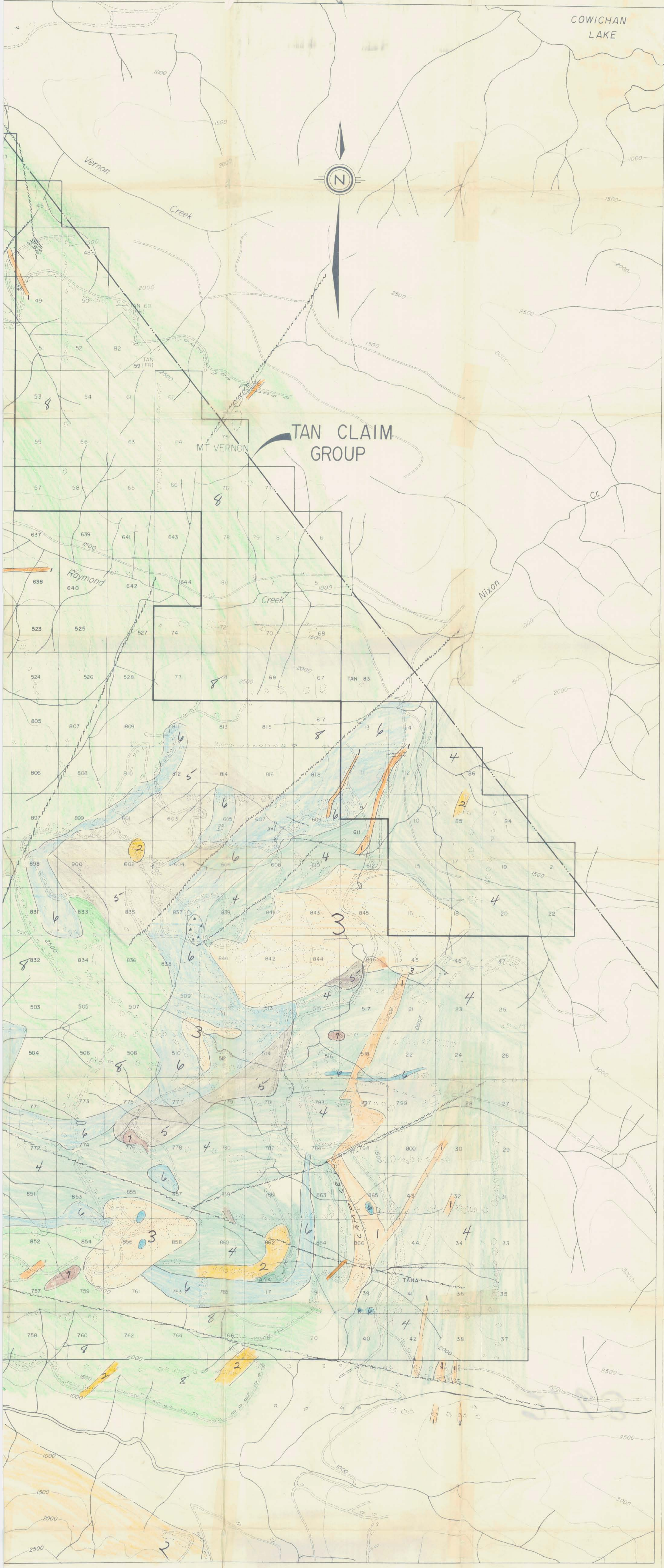




Department of  
Mines and Petroleum Resources  
ASSESSMENT REPORT

NO. 2163 MAP #1

COWICHAN LAKE



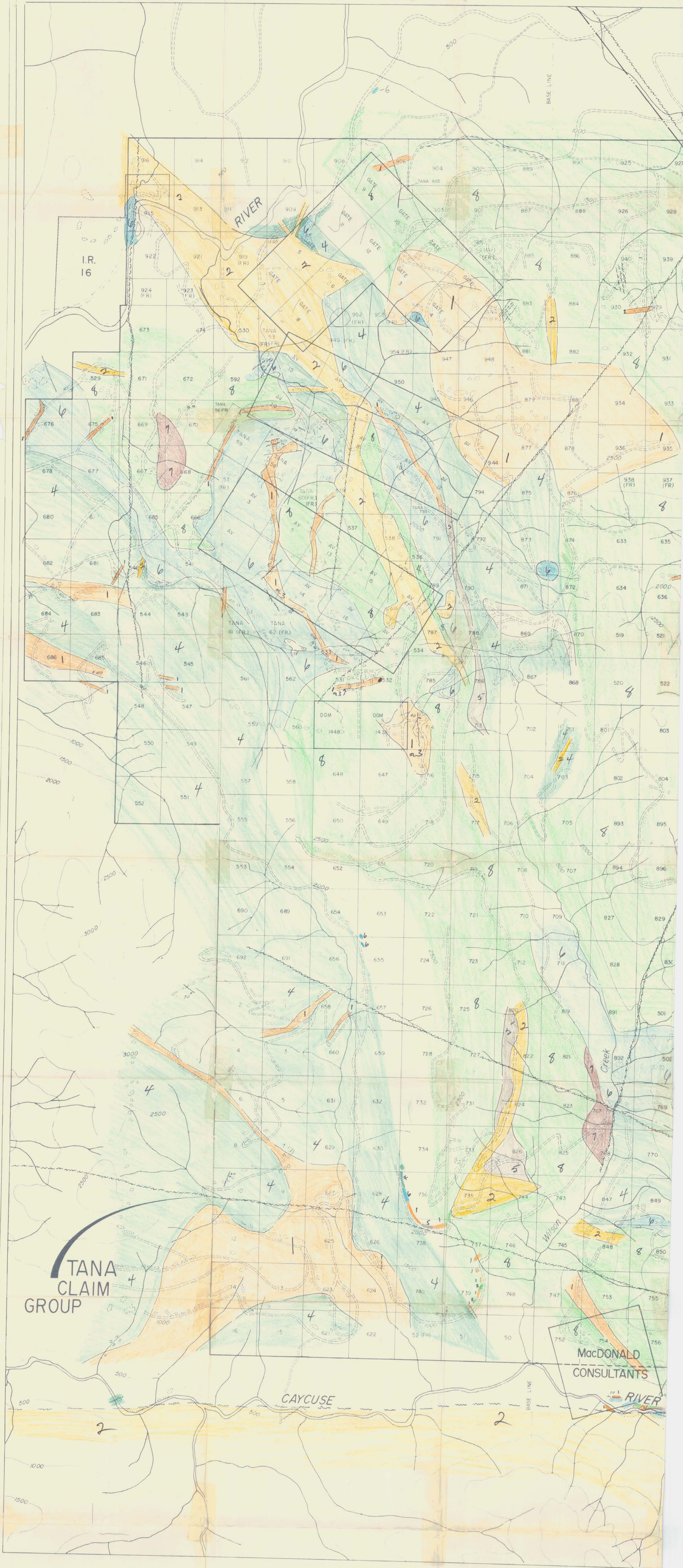
QUINTANA MINERALS CORPORATION  
PORT RENFREW, CENTRAL VANCOUVER ISLAND

MAP SHOWING  
CLAIMS & GEOLOGY

SCALE  
FEET 2000 1000 0 1000 2000 FEET

To accompany report  
of  
D. W. Macdonald  
BRITISH COLUMBIA  
ENGINEER  
Oct 15/69

2163

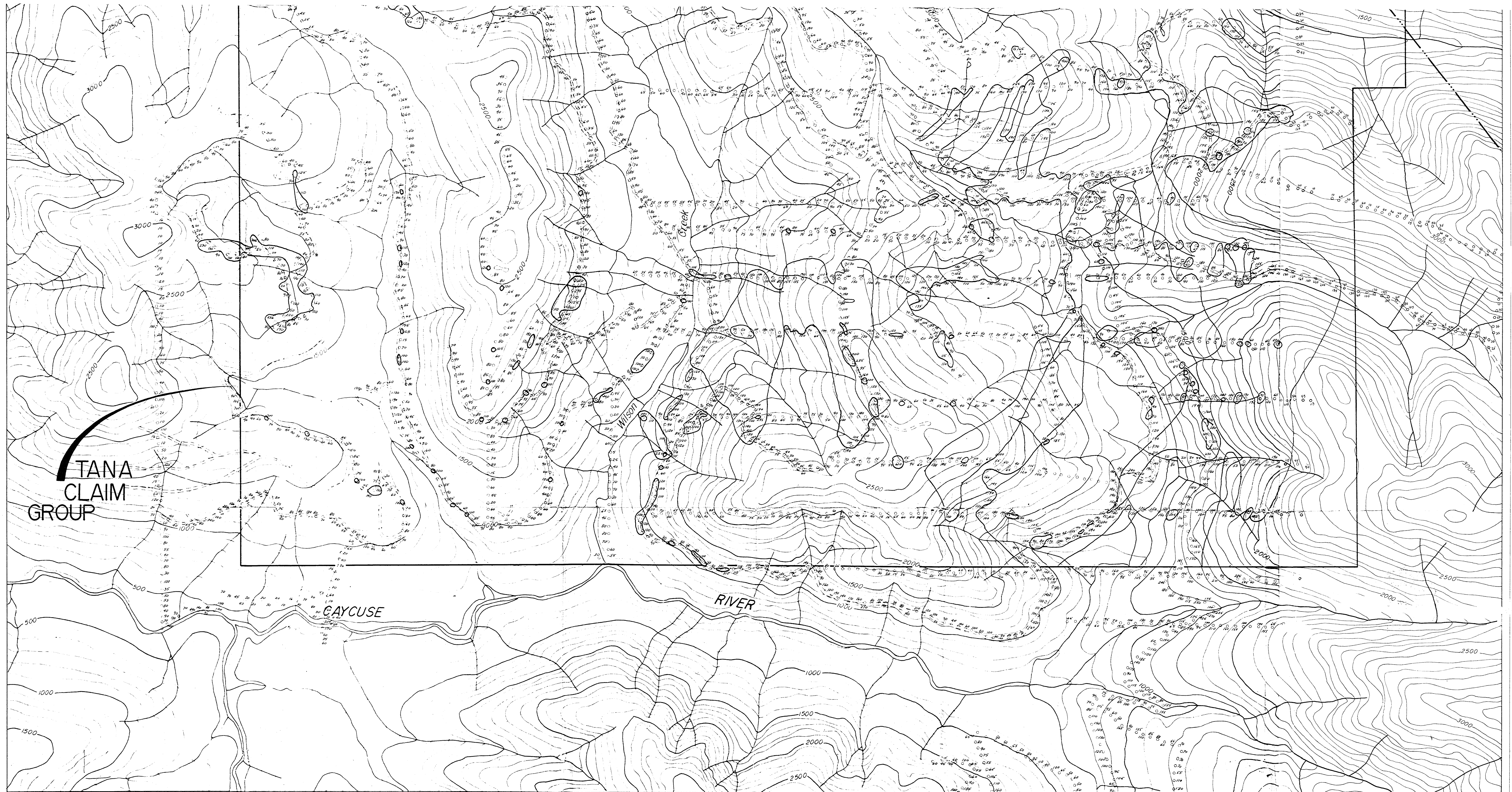


**LEGEND**

- 8 BONANZA VOLCANICS
- 7 BONANZA ARGILLITES
- 6 QUATSINO LIMESTONE
- 5 SEDIMENT BEDS
- 4 KARMUTSEN VOLCANICS
- 3 GABBRO
- 2 GRANODIORITE
- 1 QUARTZ FELDSPAR PORPHYRY

For some areas of 1 and 3, the colors are indistinctly distinguishable.

Department of  
**Mines and Petroleum Resources**  
**ASSESSMENT REPORT**  
 NO. 2163 MAP #2



TANA  
CLAIM  
GROUP

GAYCUSE

RIVER

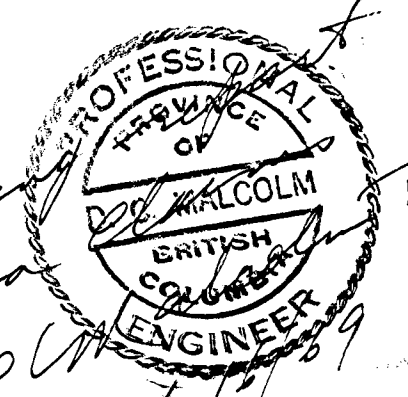
Department of  
Mines and Petroleum Resources  
ASSESSMENT REPORT  
NO. 2163 MAP #4

QUINTANA MINERALS CORPORATION  
PORT RENFREW, CENTRAL VANCOUVER ISLAND  
GEOCHEMICAL SURVEY  
COPPER (P.P.M.)

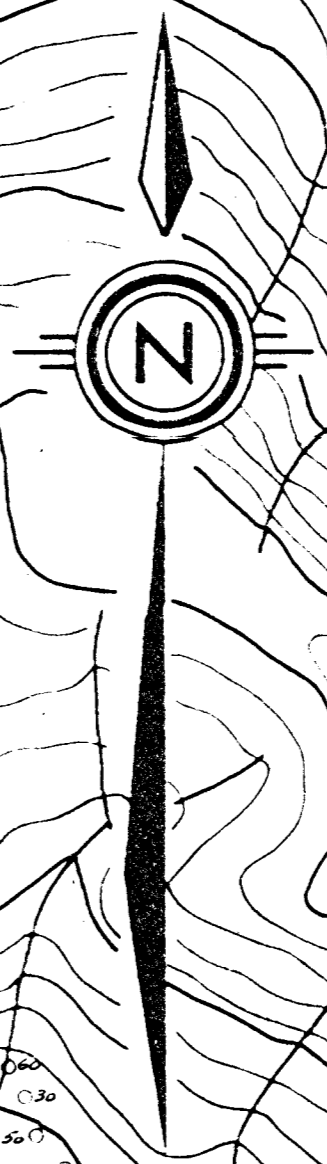
SCALE  
FEET 2000 1000 0 1000 2000 FEET

2163

To accompany  
in Jan  
DCLM  
Oct 1969



COWICHAN  
LAKE



RIVER

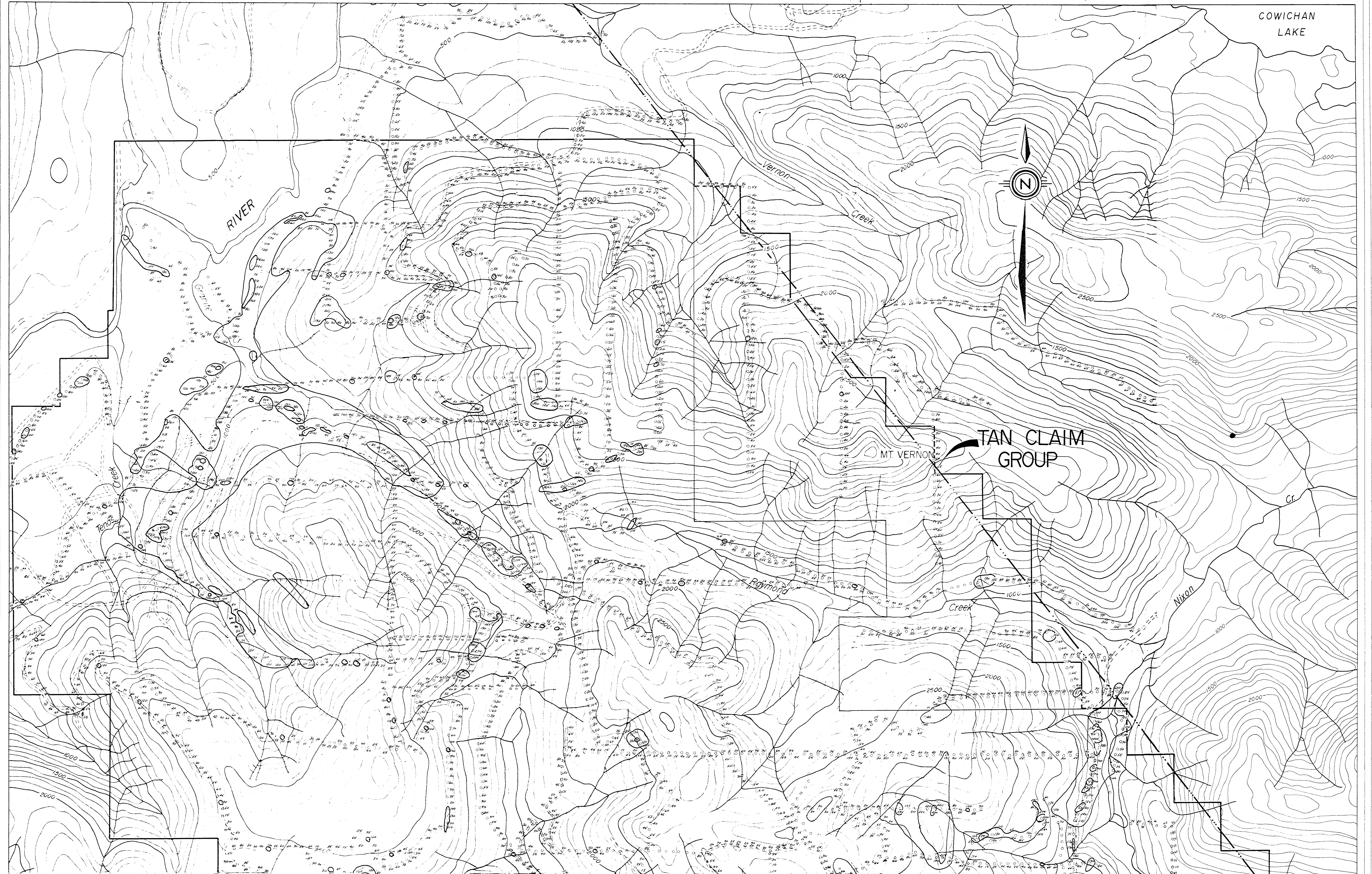
Vernon  
Creek

TAN CLAIM  
GROUP

MT. VERNON

Raymond  
Creek

Nixon  
Cr.



COWICHAN LAKE

RIVER

N

TAN CLAIM GROUP

MT VERNON

Vernon Creek

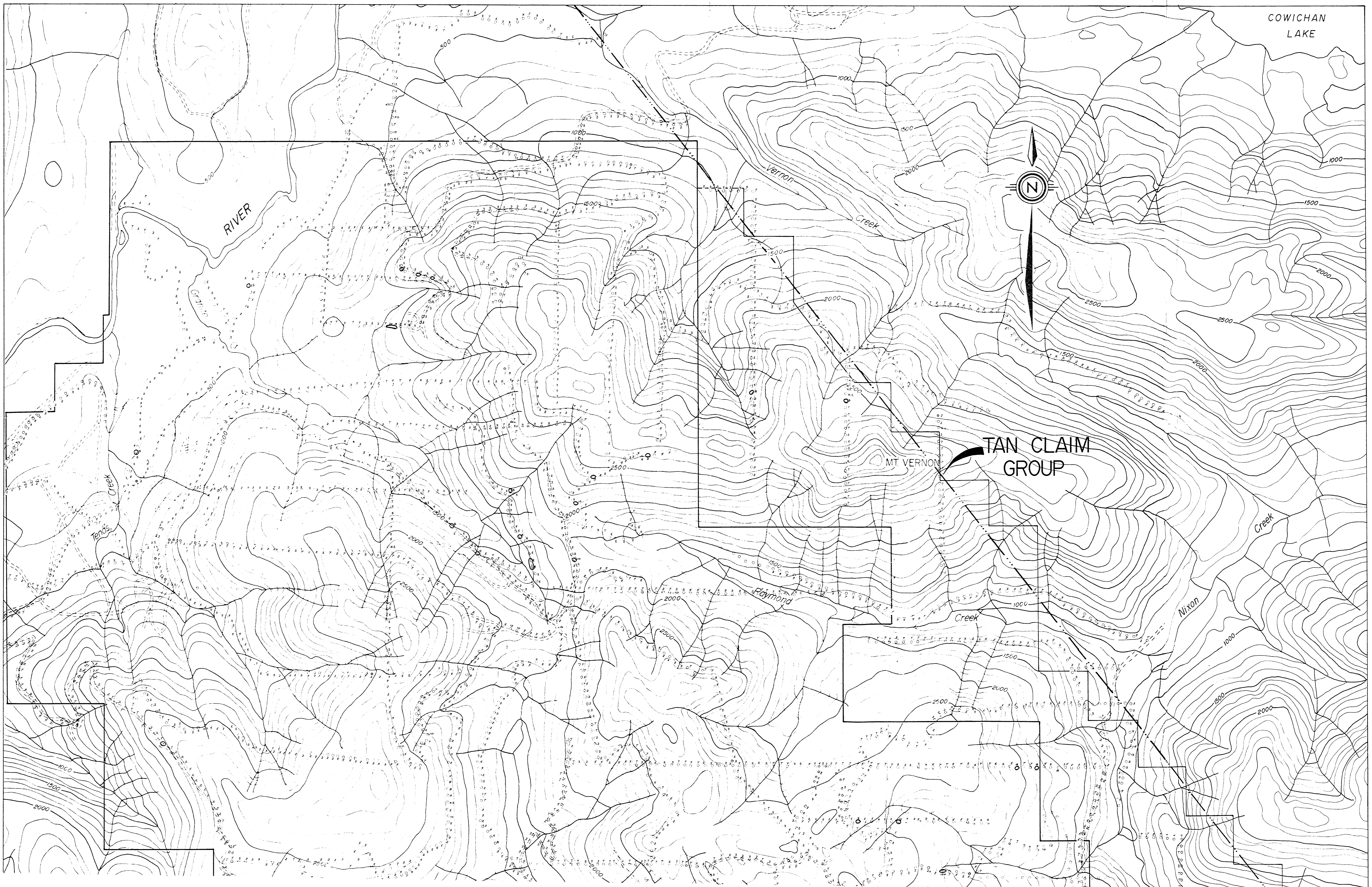
Creek

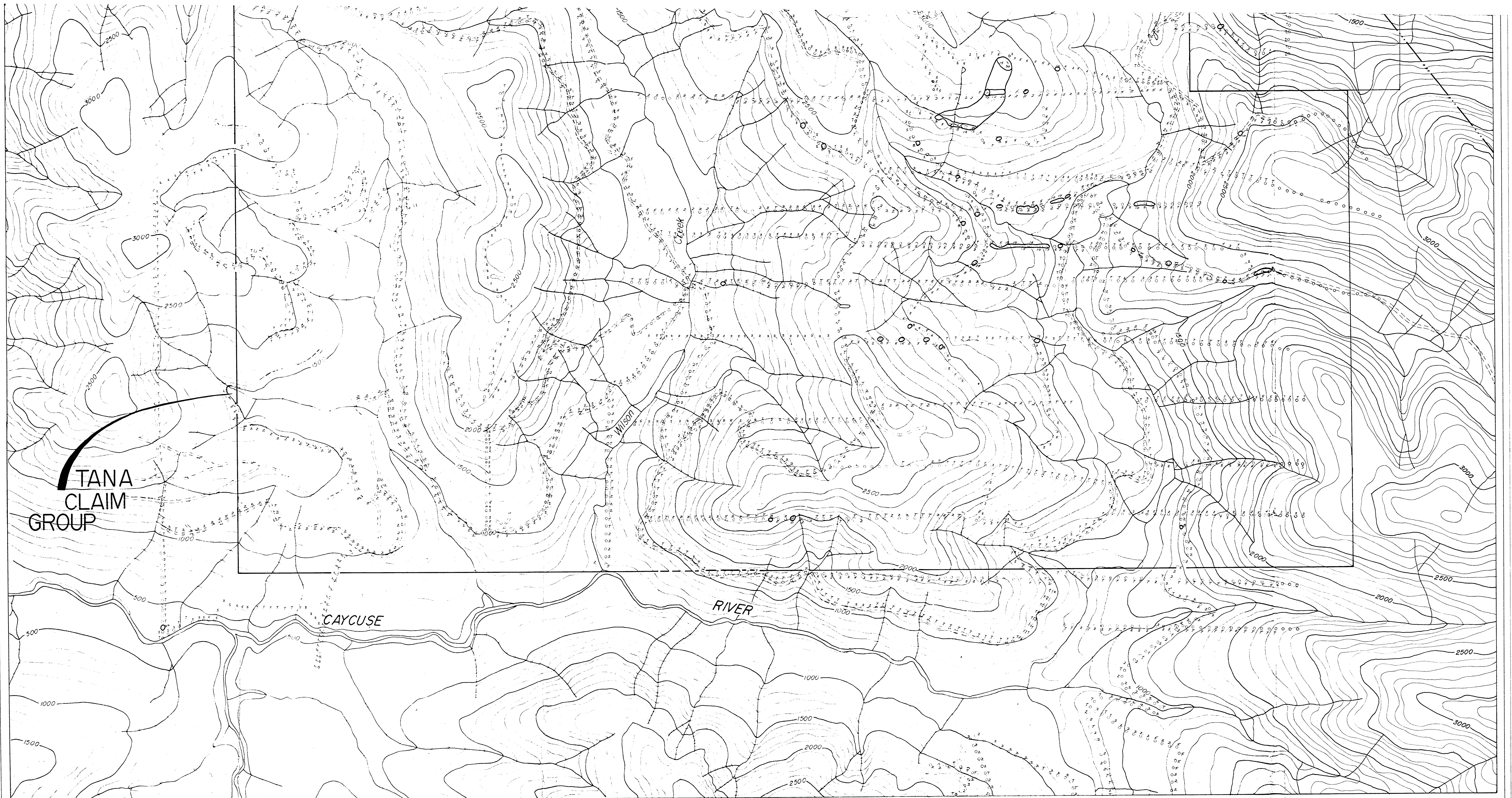
Nixon

Raymond

Creek

Tenas Creek





TANA  
CLAIM  
GROUP

CAYCUSE

RIVER

Wilson  
Creek

Department of  
Mines and Petroleum Resources  
ASSESSMENT REPORT  
NO. 2163 MAP #3

2163

QUINTANA MINERALS CORPORATION  
PORT RENFREW, CENTRAL VANCOUVER ISLAND  
GEOCHEMICAL SURVEY  
MOLYBDENUM (PPM.)

*To accompany report  
on  
1969  
1969*

SCALE  
FEET 2000 1000 0 1000 2000 FEET