

2195

MACDONALD CONSULTANTS LTD.

SUITE 12 - 425 HOWE STREET, VANCOUVER, 1, B.C.

Report  
on a  
Geochemical Survey

on the

Al 10-17  
Al 18-29  
Al 55-60 Al 61-68

Group of Mineral Claims

held by

Belvedere Mines Ltd. (NPL)

located

on the Little Nitinat River

Lat.  $48^{\circ} 54\frac{1}{2}'$  N. Long.  $124^{\circ} 41\frac{1}{2}'$  W.

in

Alberni Mining Division

by

MacDonald Consultants Ltd.

E. D. Dodson

Vancouver, B.C.

June 30, 1969.

TABLE OF CONTENTS

	<u>Page</u>
Introduction	1
Location and Access	1
Topography	1
Geology	2
Claim Group	2
History	2
Geochemical Survey	3
Conclusions and Recommendations	
Map Index	
#1 Soil Sample Layout - Lead	
#2 Soil Sample Layout - Copper	

**Department of  
Mines and Petroleum Resources  
ASSESSMENT REPORT**

NO. 2195 MAP.....

## INTRODUCTION

During the period May 13th to May 30th 1969, a geochemical survey was carried out on the A1 Mineral Claims on the Little Nitinat River south of Port Alberni, B.C.

A total of 23.2 line-miles of chain and compass line was run including control lines. Samples were taken at 100 foot intervals on lines spaced approximately 400 feet apart. Errors in line spacing result from inaccuracies in line direction. A total of 1020 samples were taken. 510 samples were analysed for copper and lead.

## LOCATION AND ACCESS

The A1 Claims lie approximately fifteen miles south of Camp "B" of McMillan Bloedel in the Alberni Mining Division, B.C. The Claims are accessible by logging road from Port Alberni, a distance of approximately thirty miles.

## TOPOGRAPHY

The topography is fairly rugged. Hillsides are generally steep sided cut by narrow deep gulleys. The valley areas are reasonably flat although narrow. The property area has been partially logged off.

## GEOLOGY

Since a complete geological mapping program of the property has not been completed, the geology of the property is imperfectly known. The chief rock types are diorite and grano diorite of the Coast Intrusive. On the eastern part of the property, purplish weathered volcanics of the Vancouver group are seen to outcrop.

A major northwesterly striking shear zone was observed at three separate points along strike on the property.

CLAIM GROUP

The A1 Group of Mineral Claims consist of the following:-

<u>Claim Name</u>	<u>Record No.</u>	<u>Recording Date</u>
A1 10 - 17	12899 - 12906	July 5, 1968
A1 18 - 29	13079 - 13090	July 17, 1968
A1 55 - 60	13091 - 13096	July 17, 1968
A1 61 - 68	13099 - 13106	July 31, 1968

The Mining Recorder in Port Alberni contends that the A1 29 claim has been staked in contravention to Article 12(i)C of the B.C. Mineral Act. This was not confirmed by ground reconnaissance during the work program.

HISTORY

The A1 Group of claims was staked by Mr. K. Foote in July 1968 and transferred to Mr. M. Roantree in May 1969. Mr. M. Roantree is the principal of Belvedere Mines Ltd. (NPL).

A short adit thought to have been driven in 1916 exists on the property.

GEOCHEMICAL SURVEY

The geochemical survey consisted of soil sampling at 100 foot intervals along all cross lines and along the base-line and tie-lines.

The samples were taken by an auger from the "B" horizon. They were packed in water resistant prenumbered paper sample bags provided by the assay laboratory.

Every second sample was shipped to Bondar-Clegg & Co. Ltd., 1500 Pemberton Avenue, North Vancouver, B.C. to be assayed for copper and lead. The samples were screened in the lab, the -80 mesh fraction was assayed.

Hot aqua-regia digestion was used. Both the copper and lead values were determined by atomic absorption.

A total of 510 samples were assayed.

Indications of anomalous trends were found mainly in the northwestern part of the property along and near a major fault zone.

Background values for copper average about 30 ppm; anomalous values range from 60 - 360 ppm.

Several weaker trends are indicated by values twice background.

Background values for lead average about 40 ppm; anomalous values range from 100 - 1450 ppm. Several weaker trends are indicated by values twice background.

Coincident copper and lead anomalous trends are observed to occur in the northwestern part of the property.

Results are plotted on the accompanying maps.

#### CONCLUSIONS AND RECOMMENDATIONS

The geochemical survey outlined several areas of coincident copper and lead anomalous values.

The absence of a complete geological mapping program on the property precludes correlation of the results with the underlying rock types at this time. A major fault structure that was mapped on the property does in places correlate with the anomalous soil metal values.

A program of detailed geological mapping and of ground magnetometer survey has been recommended for the property.

Respectfully submitted,

MACDONALD CONSULTANTS LTD.



E. D. Dodson, P. Eng.

edd/mm



P.C

MACDONALD CONSULTANTS LTD.

SUITE 112 - 425 HOWE STREET VANCOUVER 1, B. C.

May 31, 1969  
 Job No. 261-1 (Al Group)  
 Invoice No. 606

Belvedere Mines Ltd.  
 629 - 7th West Pender Street  
 Vancouver 1, B. C.

RE: PROFESSIONAL SERVICES FOR MAY, 1969

- H. E. Croighton	18 days @ \$37.00/day	\$ 666.00	666.00
- S. G. Pickett	18 days @ \$40.00/day	720.00	720.00
- C. V. Dyon	4 1/2 days @ \$109.00/day	490.00	
- T. D. Gammonson	18 days @ \$40.00/day	720.00	720.00
- J. P. Henry	4 3/8 days @ \$70.00/day @ 3 days	306.25	210.00
- J. H. Norie	18 days @ \$45.00/day	810.00	510.00
- K. D. Robol	3 days @ \$60.00/day	180.00	
		<u>3,052.25</u>	<u>3126.00</u>

EXPENSES:

J. H. Norie, Expenses	915.70	
C. V. Dyon, Expenses	2.03	
C. V. Dyon, Expenses	7.43	
C. V. Dyon, Expenses	130.27	
Photo Copies - 57 only @ \$1.11 @ 15¢	6.57	
Photo Copies - 4 only @ \$2.50 @ 20¢	.80	
Pacific Chrysler, Plymouth (1965) Ltd.	105.43	
Distribution of Head Office	335.62	
Gas for Truck (ESS)	5.25	
D. C. Telephone Co.	11.05	
Hughes-Owens Company (Limited)	15.17	
Marshall Wells Limited	20.30	
TSL Laboratories Ltd.	40.00	
Warnock Hersey International Limited	25.20	
White Prints - 48 sq. ft. @ 7¢ sq. ft.	3.36	
- Super-Valu Stores Ltd.	172.91	172.91
- Truck Rental - 3 3/12 days @ \$15.00/day	48.75	62.23
- 154 miles @ 12¢/mile	18.48	
K. W. Foote, Expenses	92.27	
- Camp Equipment Rental	40.19	48.19
K. W. Foote, Expenses	40.50	
	<u>1,263.91</u>	<u>3414.33</u>
	<u>\$5,116.16</u>	



Department of  
Mines and Petroleum Resources  
ASSESSMENT REPORT  
NO. 2195 MAP # 1

PPM LEAD

White	< 20
Light Blue	20 - 50
Green	51 - 100
Yellow	101 - 200
Orange	201 - 300
Red	> 300

To accompany geochemical report by E.D. Dodson,  
P. Eng., on the AL Group of mineral claims,  
Alberta Mining Division, dated June 30, 1969.

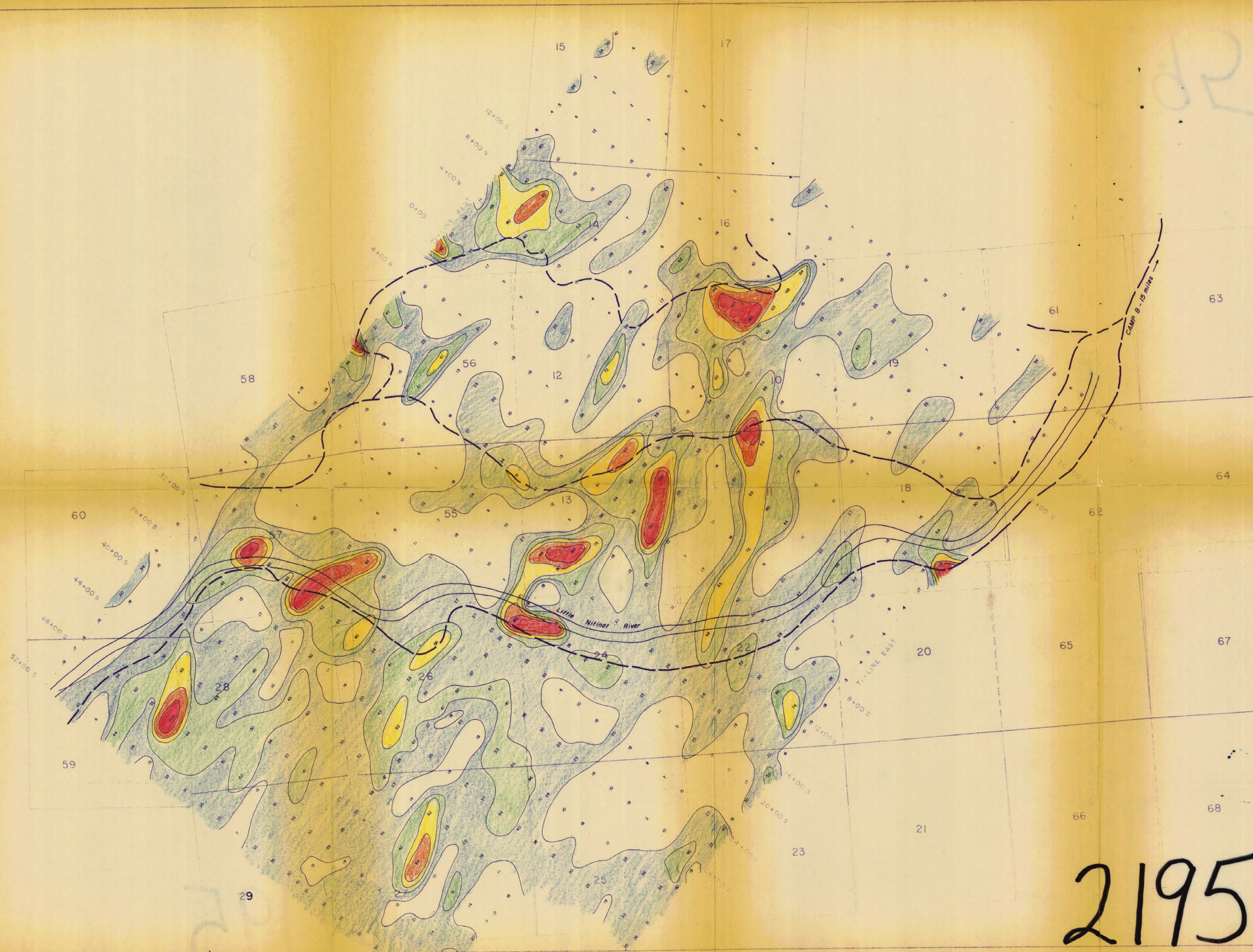
*E.D. Dodson*

BELVEDERE MINES LTD. (N.P.L.)	
MacDONALD CONSULTANTS LIMITED	
11 - 425 HOWE ST.	VANCOUVER 1, B.C.
SOIL SAMPLE - ASSAY LAYOUT.	
LEAD	
SCALE 1" = 400'	AL GROUP
DRAWN K.D.R.	
DATE JUNE 69	
NUMBER 261-1	

2195



DR



Department of  
Mines and Petroleum Resources  
ASSESSMENT REPORT  
NO. **2195** MAP **#2**

PPM COPPER

White	< 20
Blue	21 - 40
Green	41 - 60
Yellow	61 - 80
Red	81 - 100
Dark Red	> 100

To accompany geochemical report by E.D. Dodson,  
P. Eng., on the AL Group of mineral claims,  
Alberni Mining Division, dated June 30, 1969.

*E.D. Dodson*

BELVEDERE MINES LTD. (N.P.L.)  
MacDONALD CONSULTANTS LIMITED  
11 - 425 HOWE ST. VANCOUVER B.C.  
SOIL SAMPLE - ASSAY LAYOUT  
COPPER  
SCALE: 1" = 1/4 MILE  
DRAWN: J.M.  
DATE: 1969  
NUMBER: AL GROUP

2195