

Line-Cutting Report.

Claims: KIM Group

Owner: Cariboo Minelands Ltd. (N.P.L.)

Work Done by: Alrae Engineering Ltd.

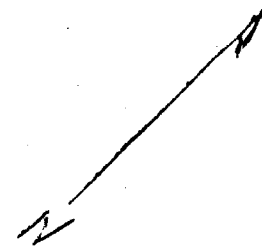
Dates Work Done: July 1969

Mining Division: Cariboo

(Also Geophysical Maps)



WELLS GROUP



| | | | | | | | | | |
|---------------|---------------|---------------|---------------|---------------|---------------|----------------|----------------|---------------|---------------|
| | THUNDER 55 | THUNDER 57 | THUNDER 59 | THUNDER 61 | THUNDER 63 | THUNDER 65 | THUNDER 67 | THUNDER 95 | THUNDER 96 |
| THUNDER 53 | THUNDER 54 | THUNDER 56 | THUNDER 58 | THUNDER 60 | THUNDER 62 | THUNDER 64 | THUNDER 66 | THUNDER 93 | THUNDER 94 |
| THUNDER 34 | THUNDER 33 | THUNDER 52 | THUNDER 51 | THUNDER 47 | THUNDER 48 | THUNDER 46 | THUNDER 45 | THUNDER 91 | THUNDER 92 |
| THUNDER 32 | THUNDER 31 | THUNDER 40 | THUNDER 39 | THUNDER 49 | THUNDER 50 | THUNDER 44 | THUNDER 43 | THUNDER 89 | THUNDER 90 |
| THUNDER 1 | THUNDER 2 | THUNDER 11 | THUNDER 1 | THUNDER 1 | THUNDER 1 | THUNDER 42 | THUNDER 41 | THUNDER 87 | THUNDER 88 |
| THUNDER 3 | THUNDER 4 | THUNDER 12 | THUNDER 2 | THUNDER 4 | THUNDER 6 | THUNDER 36 | THUNDER 35 | THUNDER 85 | THUNDER 86 |
| THUNDER 5 | THUNDER 6 | THUNDER 13 | THUNDER 14 | THUNDER 19 | THUNDER 20 | THUNDER 34A | THUNDER 33A | THUNDER 83 | THUNDER 84 |
| THUNDER 9 | THUNDER 8 | THUNDER 15 | THUNDER 16 | THUNDER 21 | THUNDER 22 | THUNDER 32A | THUNDER 31A | THUNDER 81 | THUNDER 82 |
| THUNDER 7 | THUNDER 10 | THUNDER 17 | THUNDER 18 | THUNDER 23 | THUNDER 24 | THUNDER 30 | THUNDER 29 | THUNDER 79 | THUNDER 80 |
| | | THUNDER 37 | THUNDER 38 | THUNDER 25 | THUNDER 26 | THUNDER 28 | THUNDER 27 | THUNDER 77 | THUNDER 78 |

— KIM GROUP

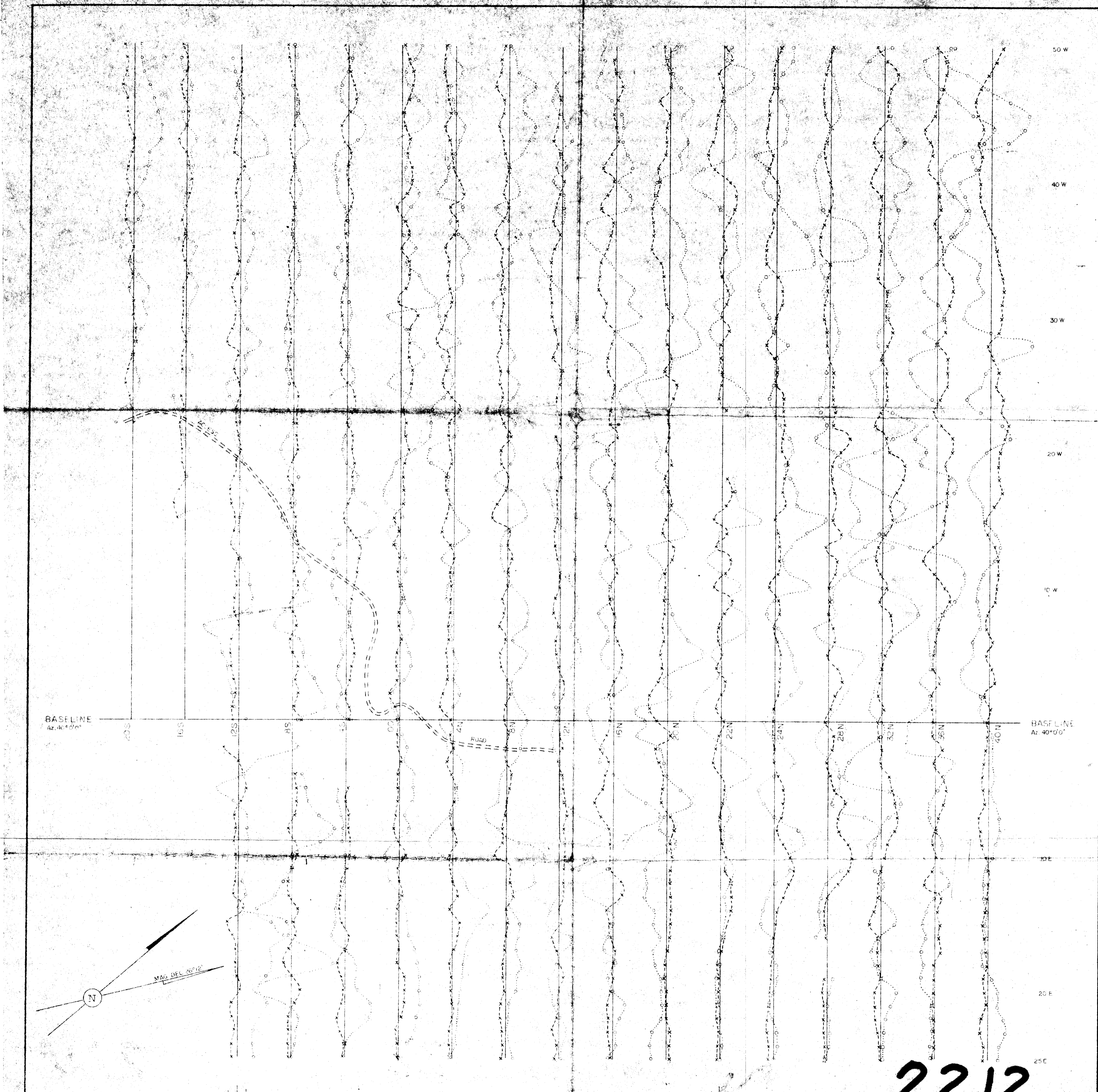
Abegou River

LINE 11
 LINE 10S
 LINE 13A
 LINE 12A
 LINE 11S
 LINE 10
 LINE 9
 LINE 8
 LINE 7
 LINE 6
 LINE 5
 LINE 4
 LINE 3
 LINE 2
 LINE 1
 LINE 0
 LINE 1
 LINE 2
 LINE 3
 LINE 4
 LINE 5
 LINE 6
 LINE 7
 LINE 8
 LINE 9
 LINE 10
 LINE 11
 LINE 12
 LINE 13
 LINE 14
 LINE 15
 LINE 16
 LINE 17
 LINE 18
 LINE 19
 LINE 20
 LINE 21
 LINE 22
 LINE 23
 LINE 24
 LINE 25
 LINE 26
 LINE 27
 LINE 28
 LINE 29
 LINE 30
 LINE 31
 LINE 32
 LINE 33
 LINE 34
 LINE 35
 LINE 36
 LINE 37
 LINE 38
 LINE 39
 LINE 40
 LINE 41
 LINE 42
 LINE 43
 LINE 44
 LINE 45
 LINE 46
 LINE 47
 LINE 48
 LINE 49
 LINE 50
 LINE 51
 LINE 52
 LINE 53
 LINE 54
 LINE 55
 LINE 56
 LINE 57
 LINE 58
 LINE 59
 LINE 60
 LINE 61
 LINE 62
 LINE 63
 LINE 64
 LINE 65
 LINE 66
 LINE 67
 LINE 68
 LINE 69
 LINE 70
 LINE 71
 LINE 72
 LINE 73
 LINE 74
 LINE 75
 LINE 76
 LINE 77
 LINE 78
 LINE 79
 LINE 80
 LINE 81
 LINE 82
 LINE 83
 LINE 84
 LINE 85
 LINE 86
 LINE 87
 LINE 88
 LINE 89
 LINE 90
 LINE 91
 LINE 92
 LINE 93
 LINE 94
 LINE 95
 LINE 96
 LINE 97
 LINE 98
 LINE 99
 LINE 100

Department of
 Mines and Petroleum Resources
 ASSESSMENT REPORT
 NO. 2212 MAP 1

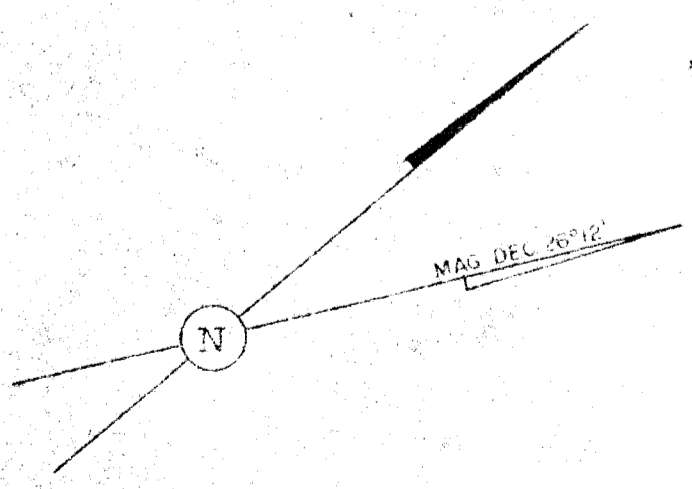
THUNDER GROUP

2212



BASELINE
At 40°00'

BASELINE
At 40°00'

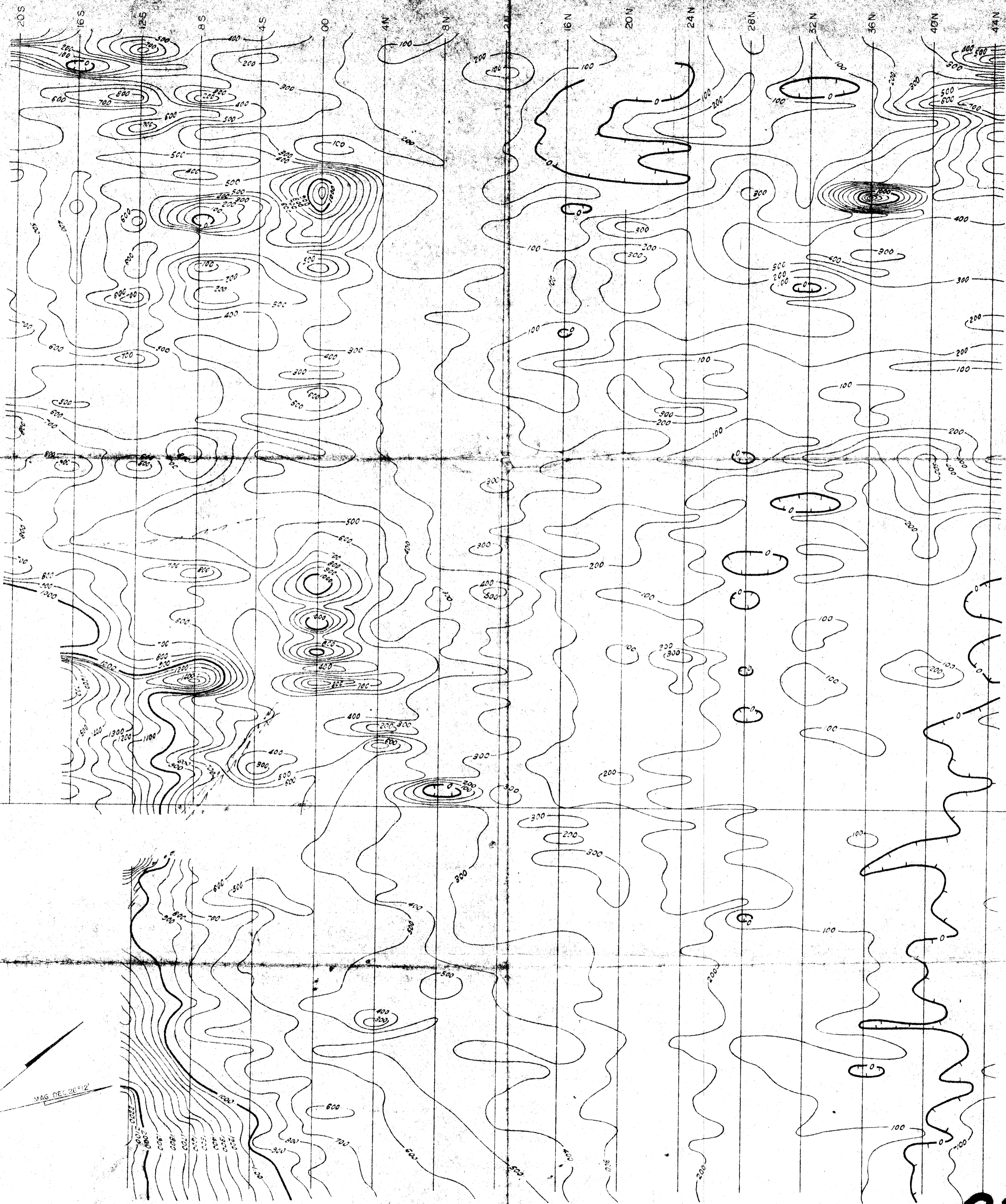


NOTE PROFILE READ FACING WESTERLY.
 ○ ○ ○ ○ ○ NULL
 + + + + + QUADRATURE
 1" = 40'

Department of
Mines and Petroleum Resources
ASSESSMENT REPORT
 NO. **2212** MAP #2

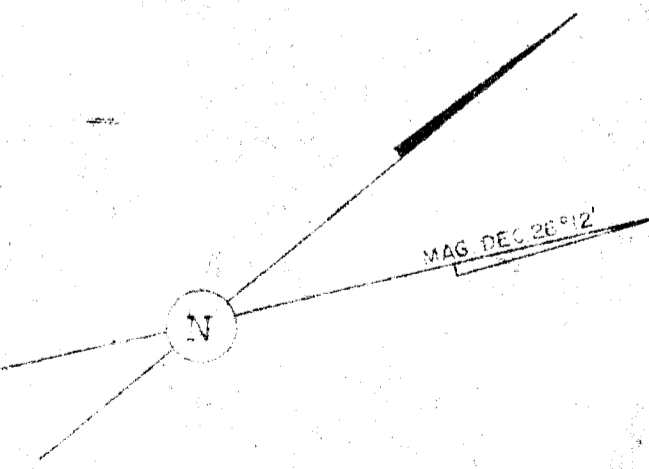
2212

| | |
|--|-----------------------|
| CARIBOO MINELANDS LTD. | |
| E. M. 16 SURVEY | |
| QUESNEL PROPERTY | |
| ALRAE ENGINEERING LTD. GEOLOGISTS AND ENGINEERS VANCOUVER, B. C. | |
| DESIGNED: G. H. | SCALE: HOR. 1" = 400' |
| DRAWN: M. P. | VERT. 1" = 400' |
| CHECKED: R. G. | DWG. No. 306-9 |
| DATE: MAY 69 | |



BASELINE
At 40°0'0"

BASELINE
At 40°0'0"



NOTE: CONTOUR INTERVAL, 100 GAMMAS.

2212

Department of
Mines and Petroleum Resources
ASSESSMENT REPORT
NO. **2212** MAP **#3**

| | |
|--|-----------------------------|
| CARIBOO MINELANDS LTD. | |
| MAGNETIC CONTOUR OVERLAY | |
| QUESNEL PROPERTY | |
| ALRAE ENGINEERING LTD. GEOLOGISTS AND ENGINEERS VANCOUVER, B. C. | |
| DESIGNED G. H. | SCALE: HOR. VERT. 1" = 400' |
| DRAWN M. P. | |
| CHECKED R. S. J. | |
| DATE: MAY 69 | DWG No. 306-8 |