

GEOPHYSICAL -- GEOCHEMICAL  
REPORT ON  
TOP CLAIM GROUPS, MERRITT, B. C.  
TO  
TORWEST RESOURCES (1962) LTD.  
BY  
SHERWIN F. KELLY, P. ENG.

2/70

GEOCHEMICAL AND GEOPHYSICAL  
REPORT ON THE  
TOP GROUPS #1, #2, #3, AND #4  
OF MINERAL CLAIMS NEAR MERRITT, B. C.,  
ON PROMONTORY HILLS,  
NICOLA AND KAMLOOPS MINING DIVISIONS

at

120° 57' WEST LONGITUDE AND  
50° 17' NORTH LATITUDE

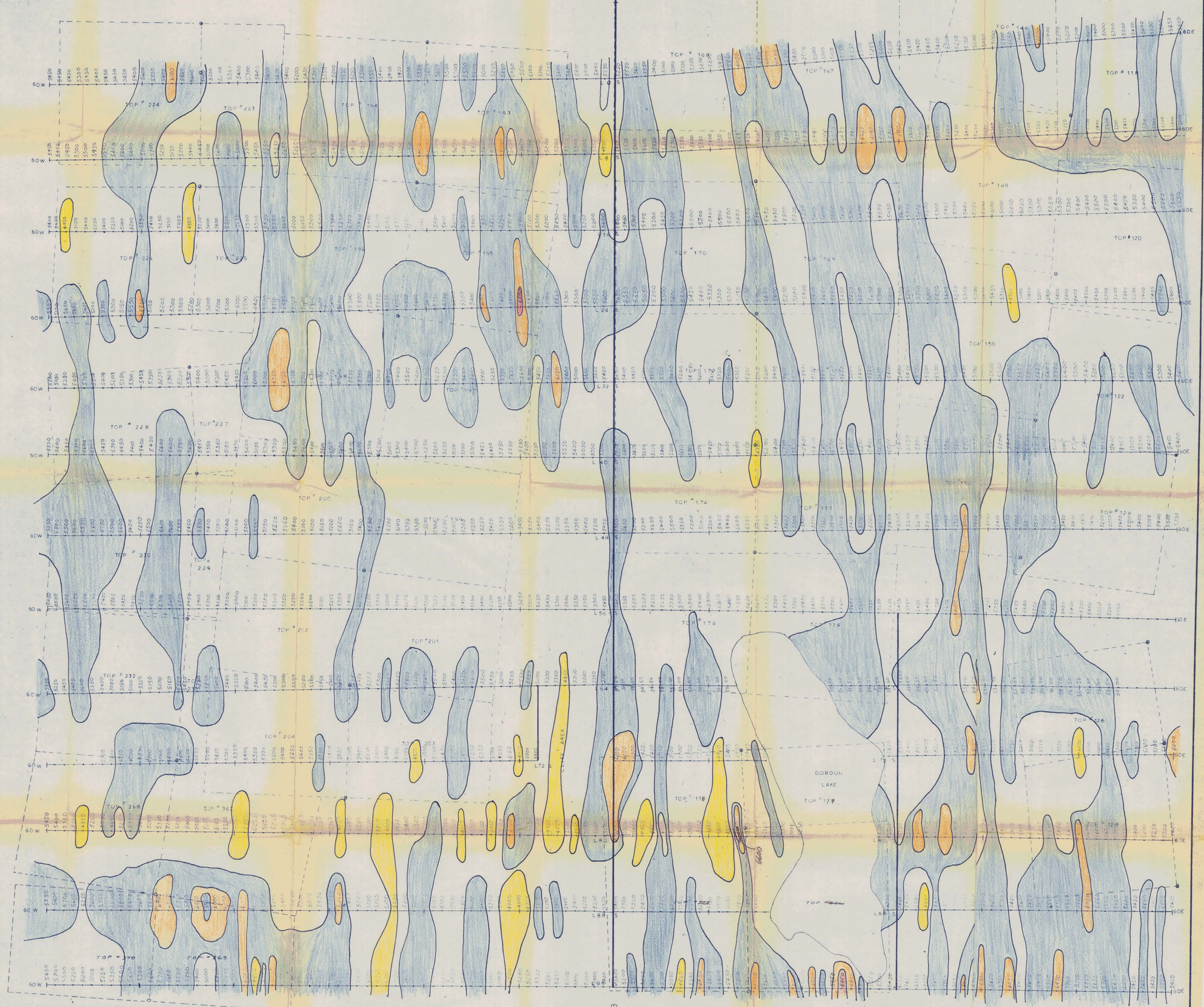
by

SHERWIN F. KELLY, P. ENG.  
GEOPHYSICIST AND GEOLOGIST

FOR TORWEST RESOURCES (1962) LTD.  
ON CLAIMS OWNED BY  
HARRY MERRELL

COVERING SURVEYS MADE  
FROM AUGUST 15 TO OCTOBER 7, 1969

PART TWO



# TOP GROUP OF M.C.S

## MAGNETOMETER SURVEY

INST: SHARPE MF-1 FLUXGATE  
CONTOUR INTERVAL: 500. GAMMAS

### Fig. 5

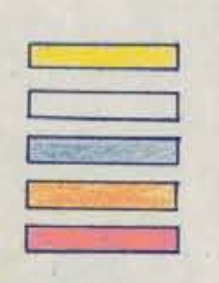
SCALE: 1 INCH TO 400 FEET

MAP AREA # 3

DATE: SEPTEMBER 1955

#### GAMMAS

- 4500 TO 5000
- 5000 TO 5500
- 5500 TO 6000
- 6000 TO 6500
- OVER 6500

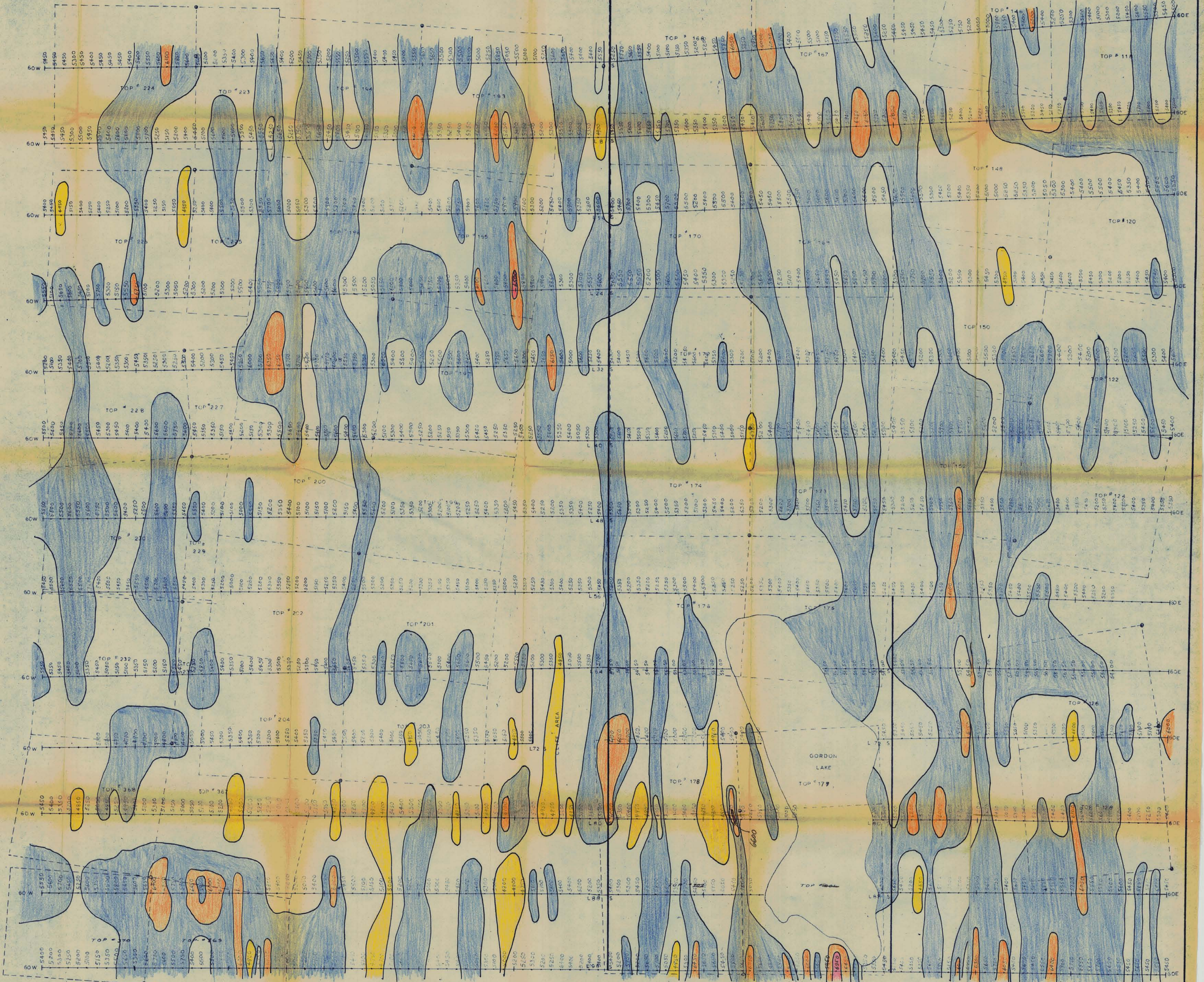


Department of  
Mines and Petroleum Resources  
ASSESSMENT REPORT  
NO. 2222 MAP # 5

Map to accompany geophysical report  
by Sherman F. Kelly, P. Eng.  
on the TOP group on Proprietary Hill,  
near Merritt, B.C., in the Klondike Mining Division,  
dated February 17, 1955.

Sherman F. Kelly, P. Eng.

2222



# TOP GROUP OF M.C.S

## MAGNETOMETER SURVEY

INST: SHARPE MF-1 FLUX GATE  
CONTOUR INTERVAL: 500 GAMMAS

Fig. 5

### GAMMAS

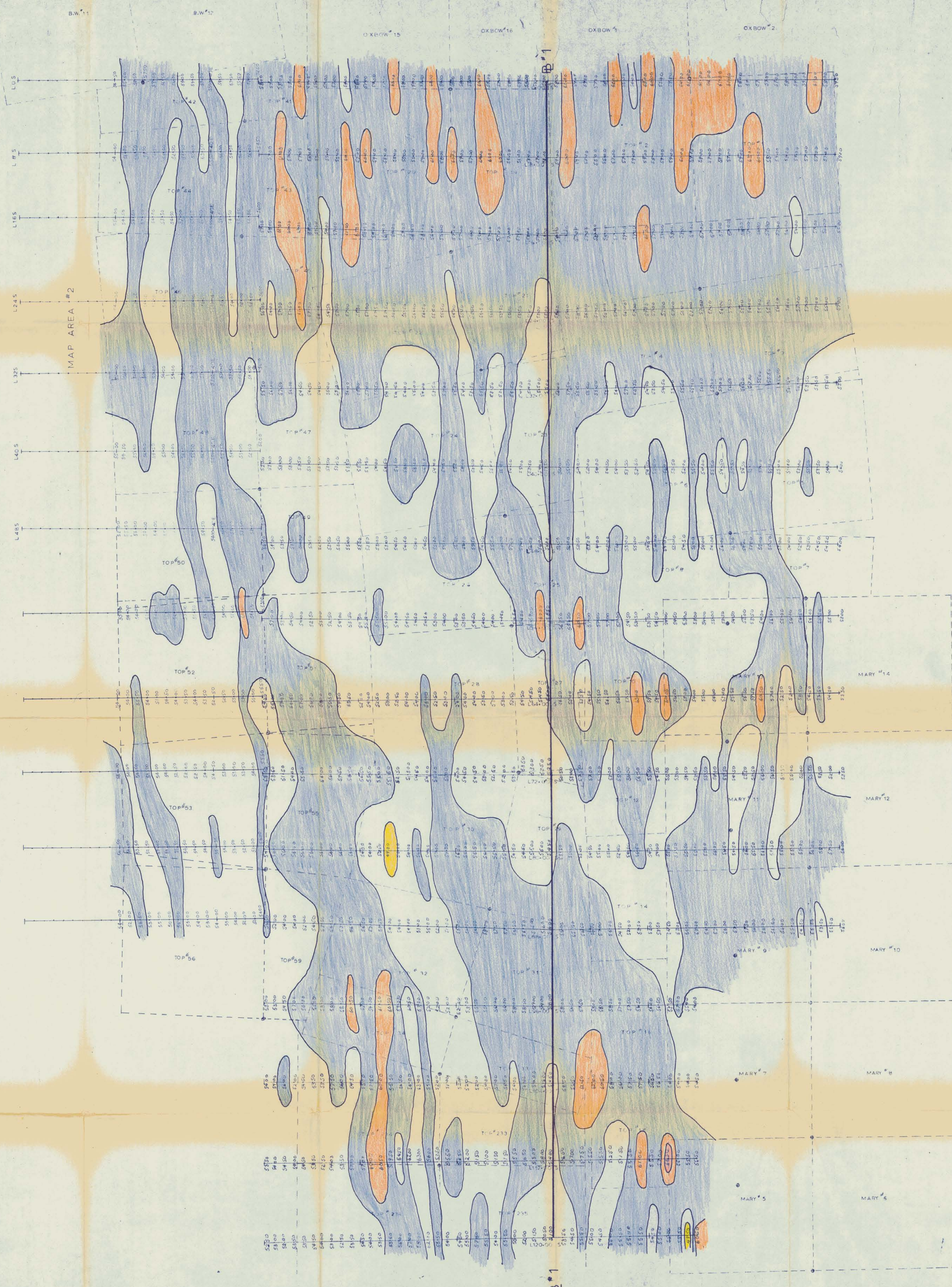


Department of  
Mines and Petroleum Resources  
ASSESSMENT REPORT  
NO. 2222 MAP #5

Map to accompany geophysical report  
by Sherrill F. Kelly, P. Eng.,  
on the TOP group on Precambrian hills,  
near Merritt, B.C., in the Nicola Mining Division,  
dated February 17, 1970.

Sherrill F. Kelly, P. Eng.

2222



**TORWEST RESOURCES (1962) LTD**  
 TOP GROUP OF M.C.S. NICOLA MINING DIVISION  
**MAGNETOMETER SURVEY**  
 M.F.1 FLUXGATE  
 CONTOUR INTERVAL: 500 GAMMAS  
**Fig. 3**  
 MAP AREA #1  
 DATE: SEPTEMBER 1959

**GAMMAS**

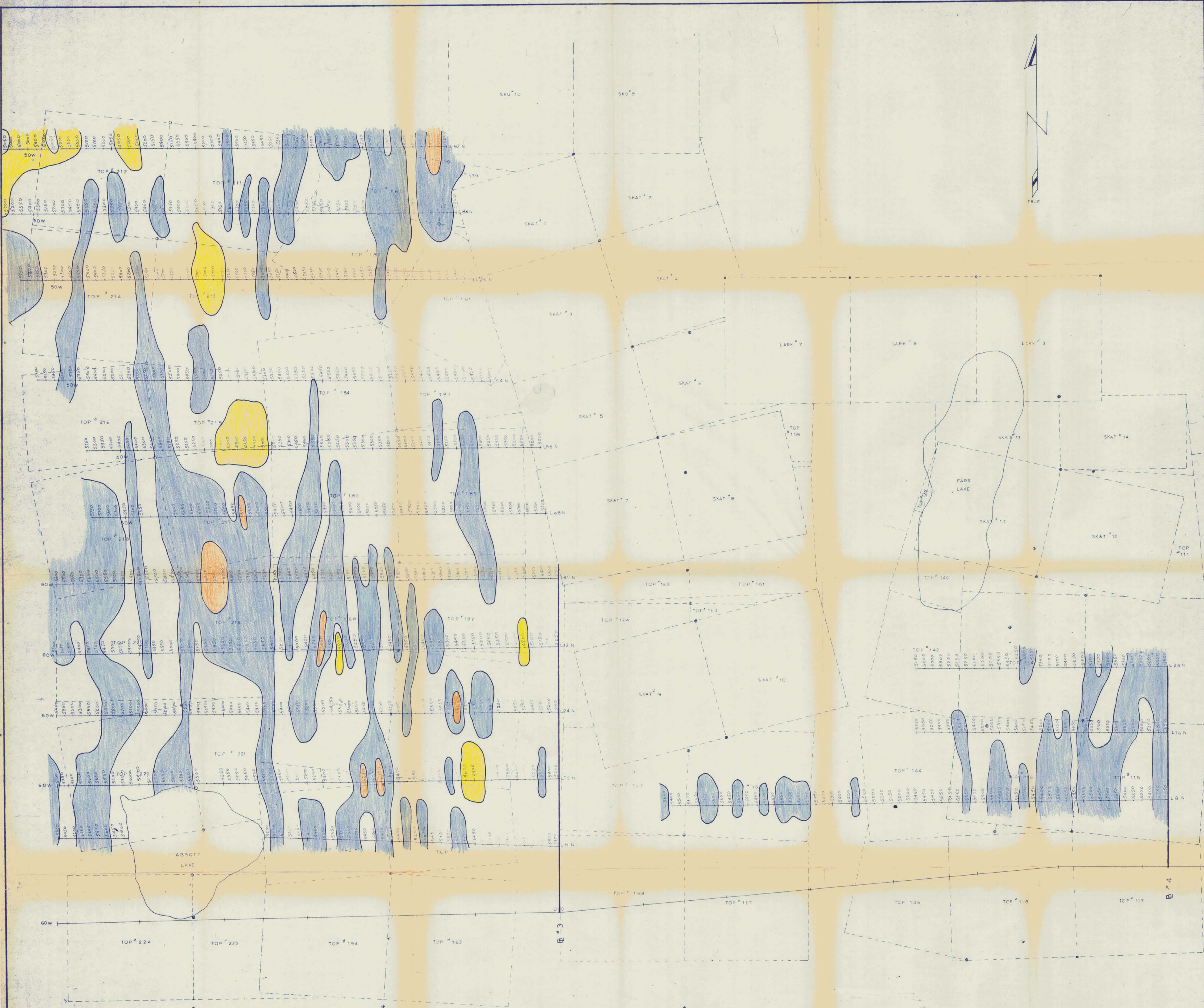
4500 TO 5000	[Lightest Yellow]
5000 TO 5500	[Yellow]
5500 TO 6000	[Light Green]
6000 TO 6500	[Green]
OVER 6500	[Darkest Green]

Department of  
 Mines and Petroleum Resources  
 ASSESSMENT REPORT  
 NO. 2222 MAP #3

Map to accompany geophysical report  
 by Bernard P. Kelly, to the  
 on the TOP group on Proprietary Hill,  
 near Merella, N.T., in the Nicoll Mining Division,  
 dated February 27, 1959.

*Bernard P. Kelly, R.Eng.*

2222

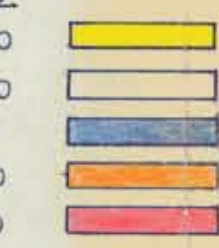


**TOP GROUP OF M.C.S.**  
**MAGNETOMETER SURVEY**

INST: SHARPE MF-1 FLUXGATE  
 CONTOUR INTERVAL: 500 GAMMAS

**Fig. 6**

**GAMMAS**  
 4500 TO 5000  
 5000 TO 5500  
 5500 TO 6000  
 6000 TO 6500  
 OVER 6500

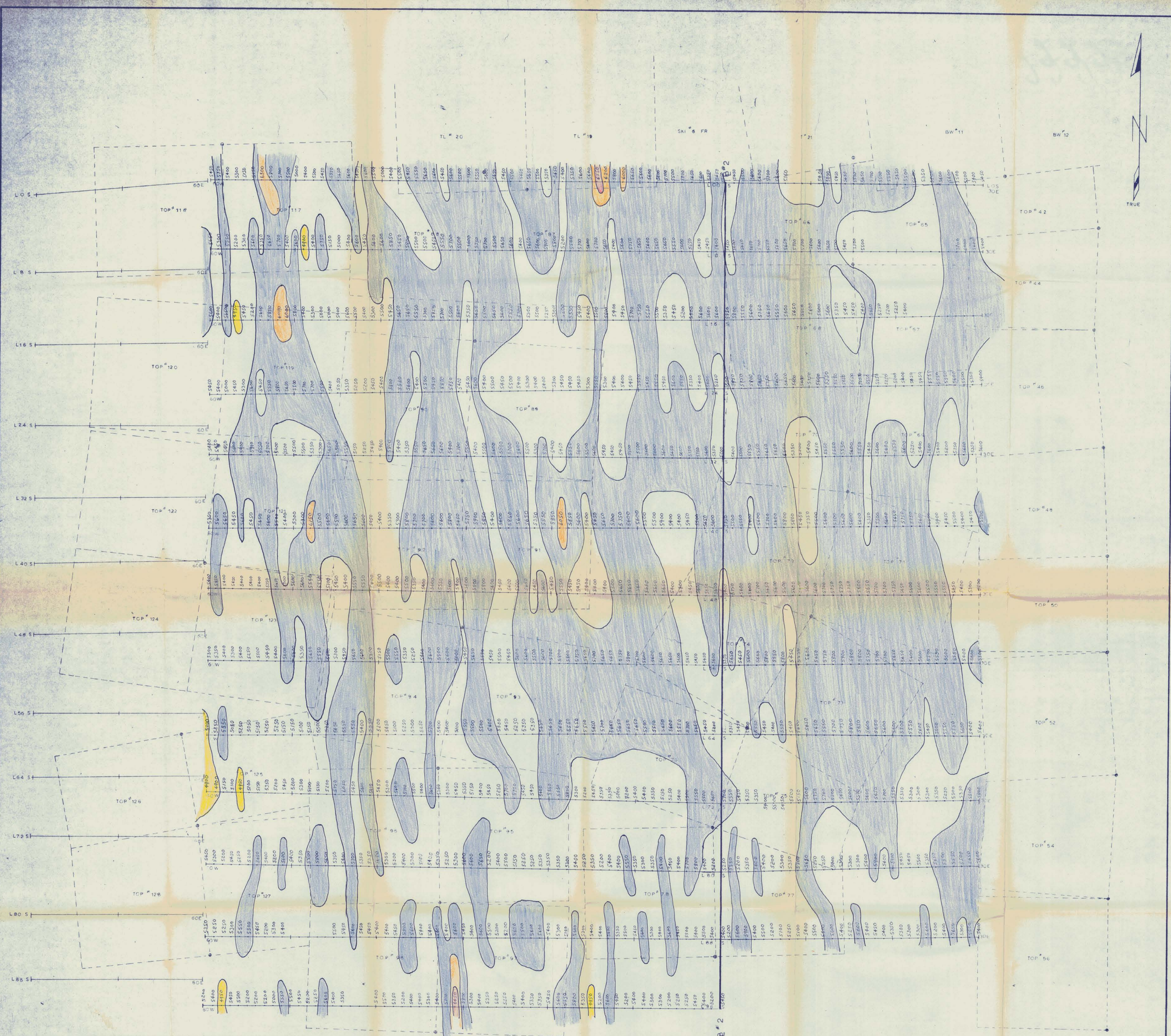


Department of  
**Mines and Petroleum Resources**  
 ASSESSMENT REPORT  
 NO. **2222** MAP **#6**

Map to accompany geophysical report  
 by Sherwin F. Kelly, P. Eng.  
 on the TOP group on Froggarty Hills,  
 near Merritt, B.C., in the Nicola Mining Division,  
 dated February 17, 1969.

*Sherwin F. Kelly, P. Eng.*

**2222**



**TOP GROUP OF M.C.S.**

**MAGNETOMETER SURVEY**

INST: SHARPE MF-1 FLUXGATE  
 CONTOUR INTERVAL: 500 GAMMAS

**GAMMAS**

- 4500 TO 5000
- 5000 TO 5500
- 5500 TO 6000
- 6000 TO 6500
- OVER 6500

Department of  
 Mines and Petroleum Resources  
 ASSESSMENT REPORT  
 NO. 2222 MAP #4

**Fig. 4**

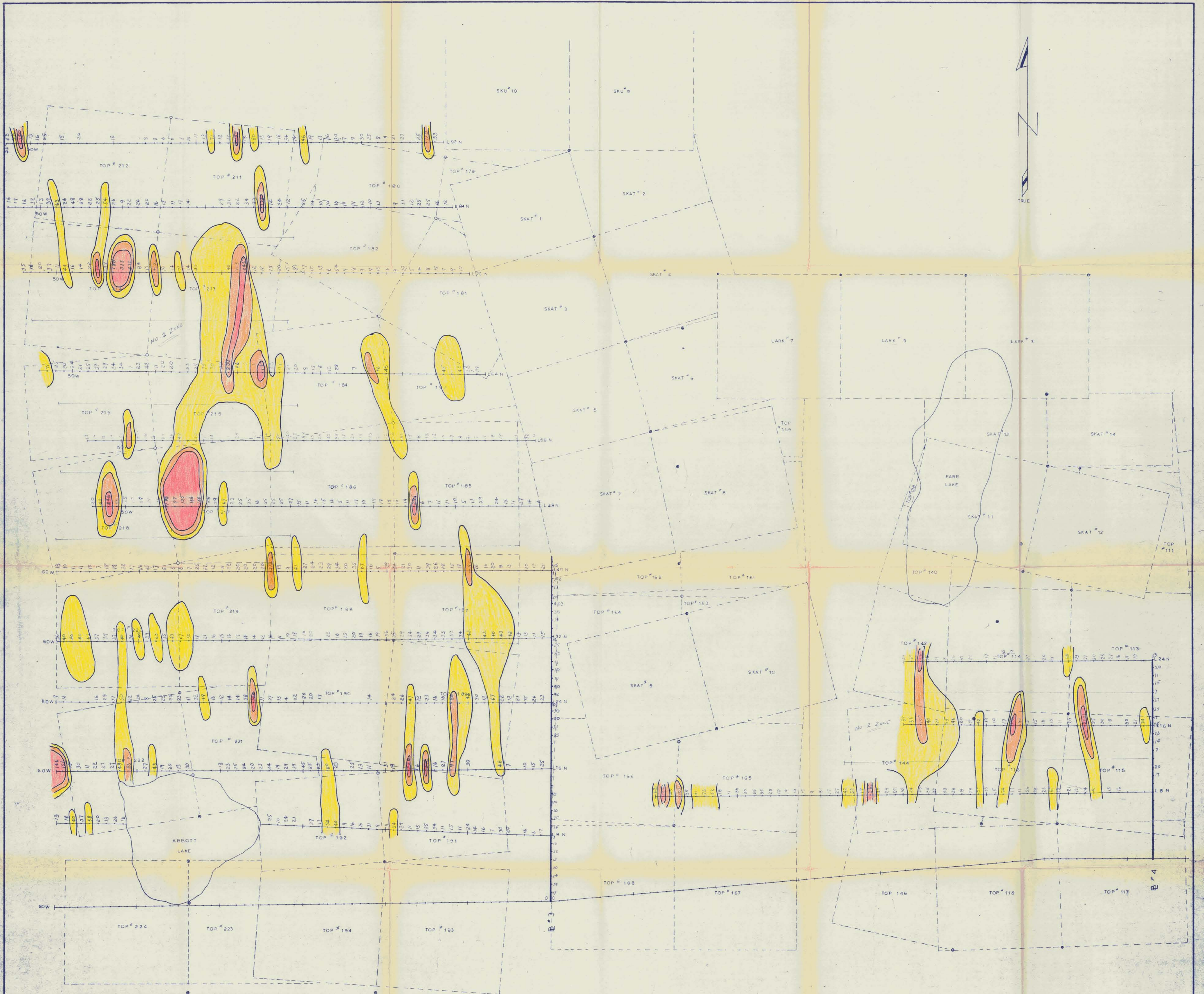
DATE: SEPT. 1969

SCALE: 1 INCH TO 400 FEET MAP AREA # 2

Map to accompany geophysical report  
 by Sherrin P. Kelly & King  
 on the TOP group on Proprietary Hills,  
 near Merritt, B.C., in the Wood-Phillips Division,  
 dated February 17, 1970.

*Sherrin P. Kelly, P. Eng.*

2222



**TOP GROUP OF M.C.S.**

**SOIL ANALYSIS SURVEY**

PERCHLORIC ACID - ATOMIC ABSORPTION

TOTAL CU.

**Fig. 10**

DATE: SEPTEMBER 1969

**LEDGEND**

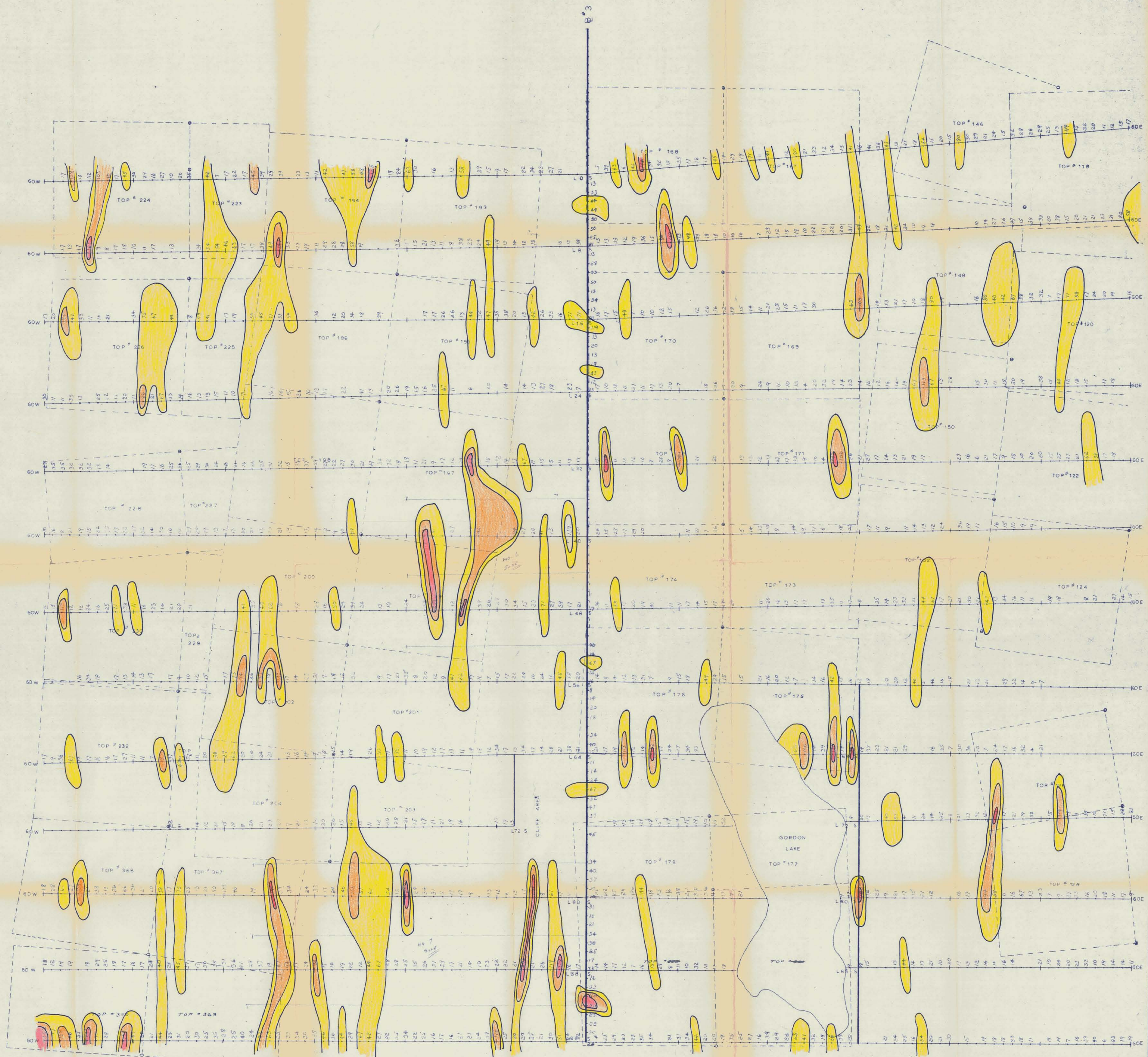
- 40 TO 80 PPM.
- 80 TO 120 PPM.
- OVER 120 PPM.

Department of  
 Mines and Petroleum Resources  
 ASSESSMENT REPORT  
 NO. 2222 MAP #10

Map to accompany geophysical report  
 by Sherwin F. Kelly, P. Eng.  
 on the TOP group on Premonitory Hills,  
 near Merritt, B.C., in the Nicola Mining Division,  
 dated February 17 1970.

*Sherwin F. Kelly, P. Eng.*

2222



TOP GROUP OF M.C.S

SOIL ANALYSIS SURVEY

PERCHLORIC ACID - ATOMIC ABSORPTION

TOTAL CU.

Fig. 9

DATE: SEPTEMBER 1969

LEGEND

- 40 TO 80 PPM.
- 80 TO 120 PPM.
- OVER 120 PPM.

Department of  
Mines and Petroleum Resources  
ASSESSMENT REPORT  
NO. 2222 MAP #9

Map to accompany geophysical report  
by Eberwin P. Kelly, P. Eng.,  
on the TOP group on Peapack Hill,  
near Merritt, B.C., in the North Mining Division,  
dated February 17 1970.

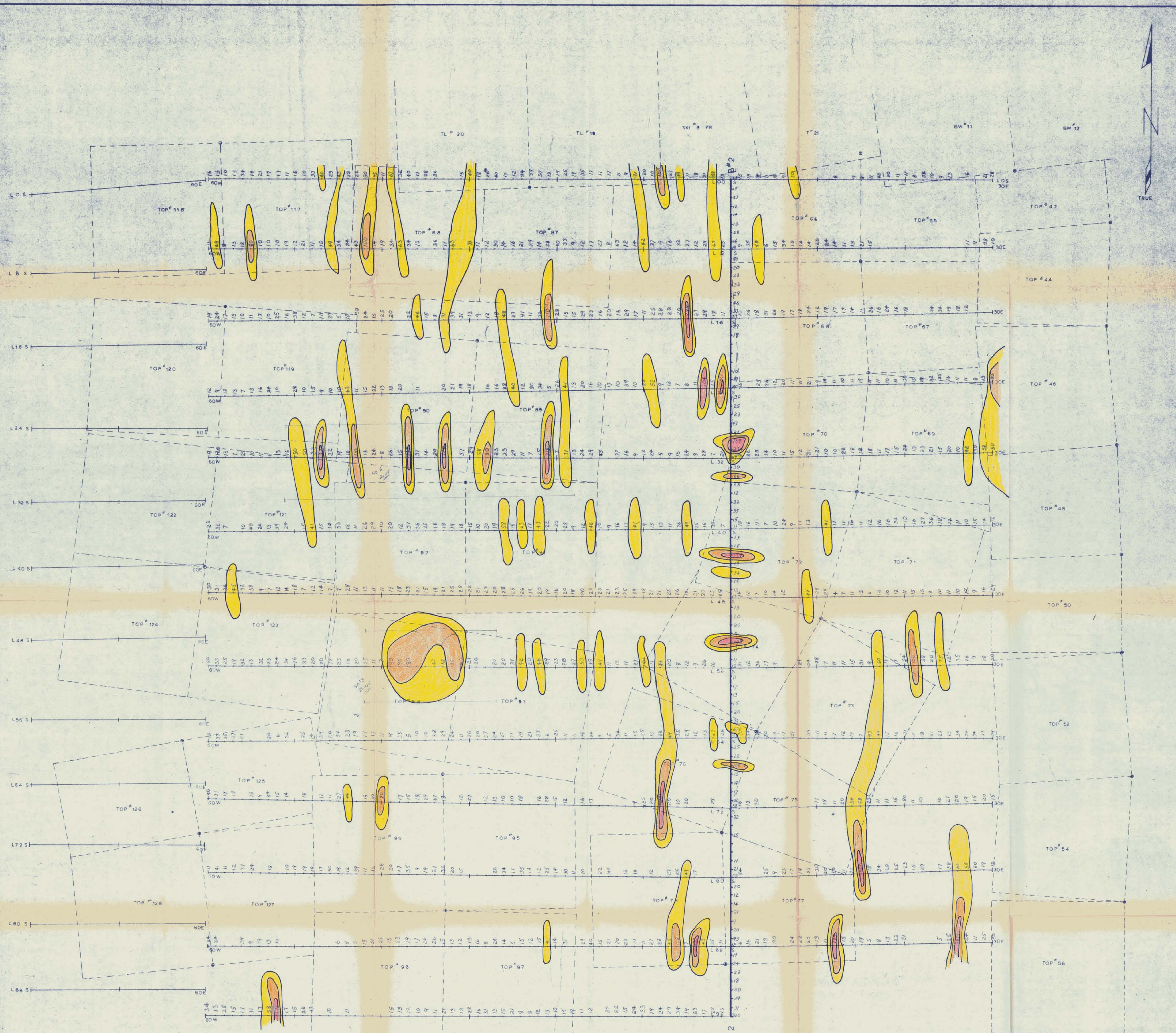
*Eberwin P. Kelly, P. Eng.*

2222

SCALE: 1 INCH TO 400 FEET

MAP AREA #3





**TOP GROUP OF M.C.S.**

**SOIL ANALYSIS SURVEY**

PERCHLORIC ACID - ATOMIC ABSORPTION

TOTAL CU.

**Fig. 8**

**LEDGEND**  
 40 TO 80 RPM.  
 80 TO 120 RPM.  
 OVER 120 RPM.

Department of  
 Mines and Petroleum Resources  
 ASSESSMENT REPORT  
 NO. 2222 MAP #8

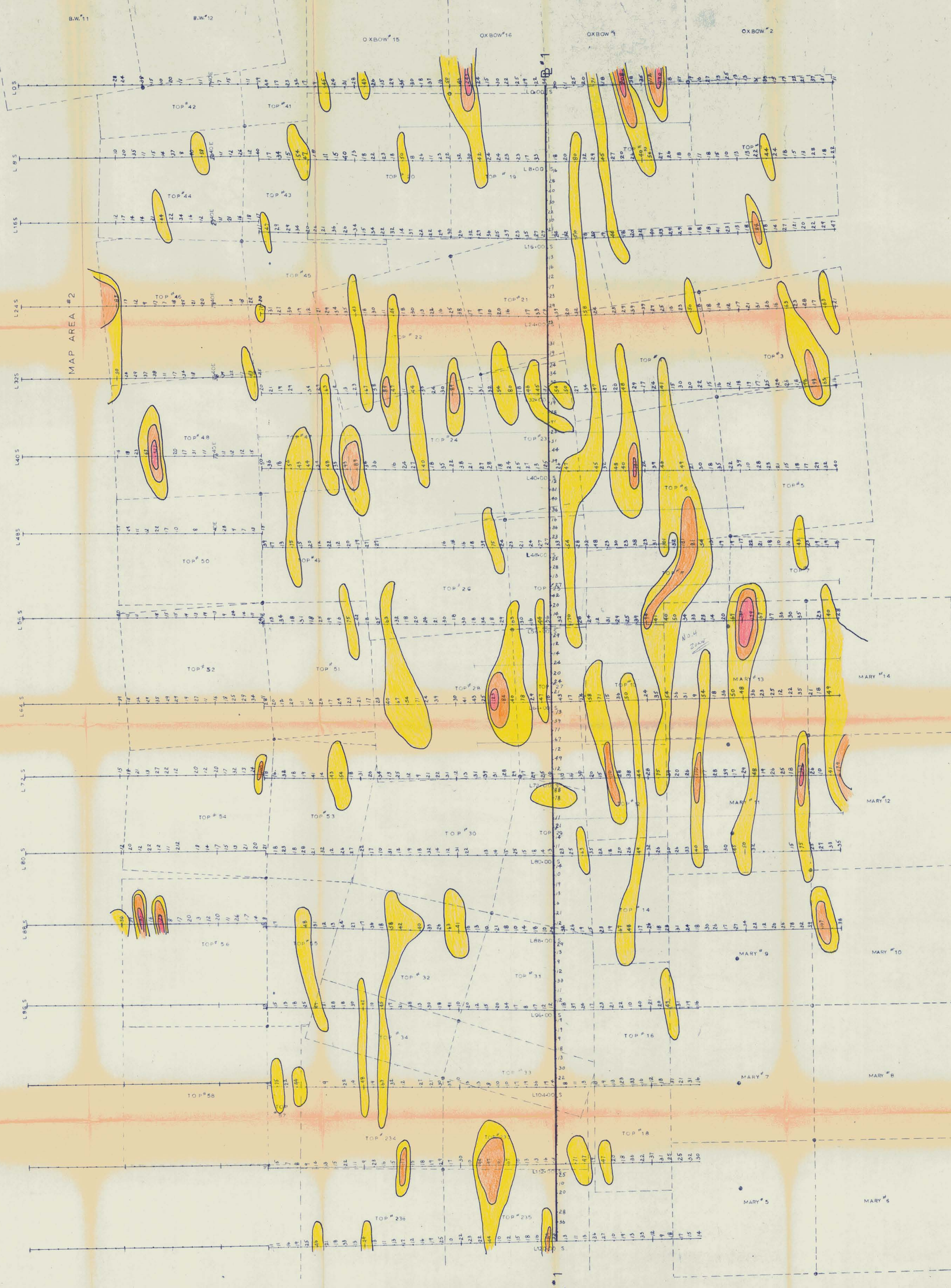
SCALE: 1 INCH TO 400 FEET MAP AREA # 2

DATE: SEPT. 1969

Map to accompany geophysical report  
 by Sherman F. Kelly, P. Eng.  
 on the TOP group on Property 1116,  
 near Merritt, B.C., in the Mackenzie Division,  
 dated February 17 1970.

*Sherman F. Kelly, P. Eng.*

**2222**



**TORWEST RESOURCES (1962) LTD.**

TOP GROUP OF MCs NICOLA MINING DIVISION

**SOIL ANALYSIS SURVEY**

PERMANENT ACID - ATOMIC ABSORPTION

TOTAL Cu  
ANALYSING BY BARRINGER RESEARCH

**Fig. 7**

MAP AREA #1 DATE: SEPTEMBER 1960

**LEGEND**

- 40 TO 80 P.P.M.
- 80 TO 120 P.P.M.
- OVER P.P.M.

Department of  
Mines and Petroleum Resources  
ASSESSMENT REPORT  
NO. 2222 MAP #7

Map to accompany prospectus prepared by Sherwin F. Kelly, P. Eng., on the TOP group on Preliminary title, near Merrick, B.C., in the Nicola Mining Division, dated February 17 1970.

*Sherwin F. Kelly P. Eng.*

2222

SCALE: 1 INCH TO 400 FEET