

TELLUROMETER SURVEY

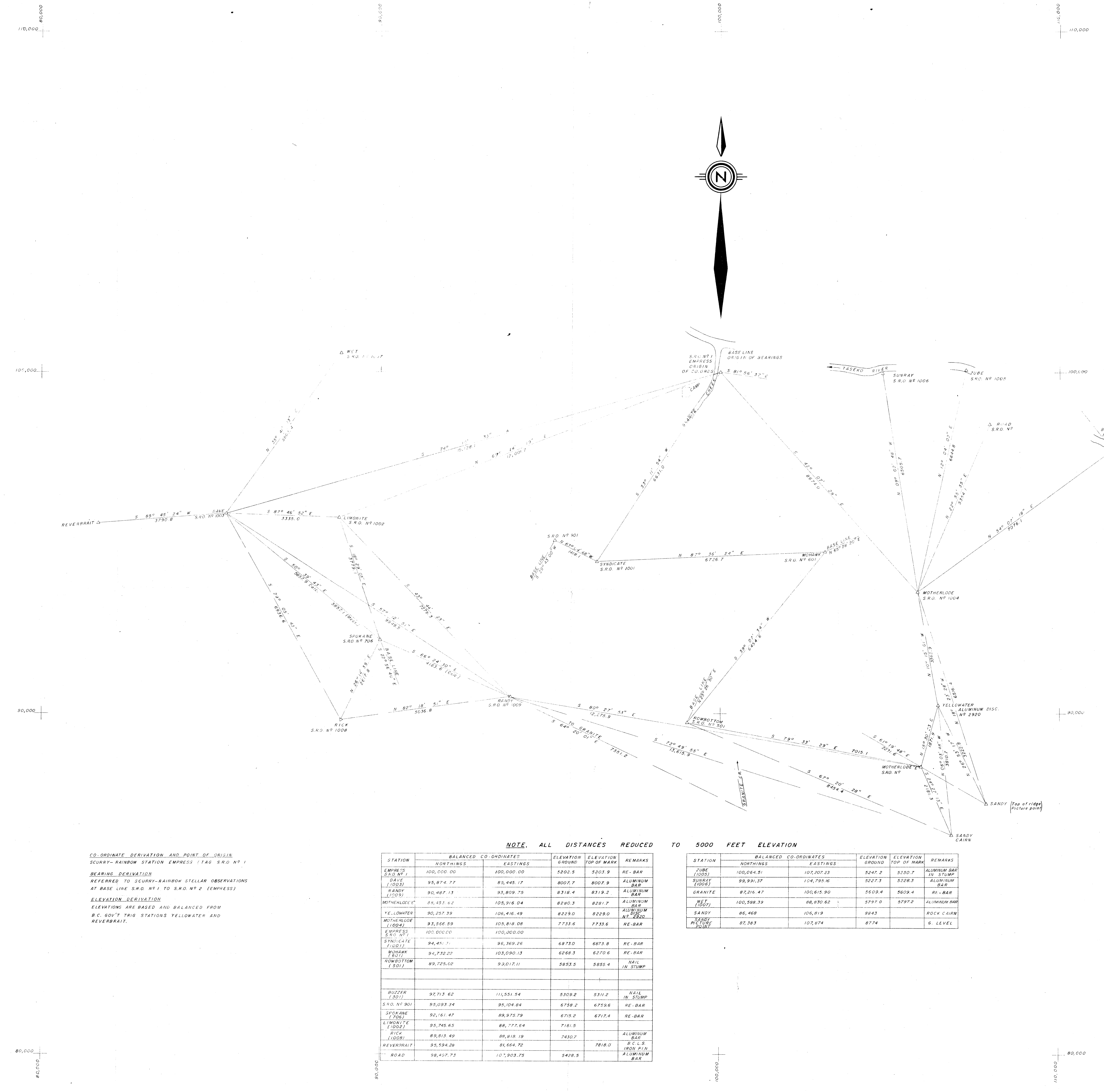
CLAIMS: BUZZER, SPOKANE-SYNDICATE, ROWBOTTOM, EMPRESS  
AND MOUNTAIN GROUPS

OWNER: CANNOO MINES LTD. (N.P.L.)

MINING DIVISION: CLINTON

BY: J. MATTHEWS, D. LYON





NOTE, ALL DISTANCES REDUCED TO 5000 FEET ELEVATION

CO-ORDINATE DERIVATION AND POINT OF ORIGIN  
 SCURRY-RAINBOW STATION EMPRESS (TAG S.R.O. NO. 1)  
 BEARING DERIVATION  
 REFERRED TO SCURRY-RAINBOW STELLAR OBSERVATIONS  
 AT BASE LINE S.R.O. NO. 1 TO S.R.O. NO. 2 (EMPRESS)  
 ELEVATION DERIVATION  
 ELEVATIONS ARE BASED AND BALANCED FROM  
 B.C. GOVT TRIG STATIONS YELLOWATER AND  
 REVERBRAIT.

STATION	BALANCED CO-ORDINATES		ELEVATION GROUND	ELEVATION TOP OF MARK	REMARKS
	NORTHINGS	EASTINGS			
EMPRESS (S.R.O. NO. 1)	100,000.00	100,000.00	5202.5	5203.9	RE-BAR
DAVE (1003)	95,445.77	85,445.17	8007.7	8007.9	ALUMINUM BAR
RANDY (1005)	90,487.13	93,809.75	8318.4	8319.2	ALUMINUM BAR
MOTHERLODE	85,451.62	105,916.04	8240.3	8281.7	ALUMINUM BAR
YELLOWATER	90,257.39	106,416.49	8229.0	8229.0	ALUMINUM BAR
MOTHERLODE (1004)	93,566.59	105,818.08	7733.6	7733.6	RE-BAR
EMPRESS (S.R.O. NO. 2)	100,000.00	100,000.00			
SYNDICATE (1001)	84,491.11	96,369.26	6873.0	6873.8	RE-BAR
MOMARK (801)	94,742.22	103,090.13	6268.3	6270.6	RE-BAR
HOWBOTTOM (501)	89,725.02	93,017.11	5853.5	5854.4	NAIL IN STUMP
BUZZER (301)	97,713.62	111,551.54	5309.2	5311.2	NAIL IN STUMP
S.R.O. NO. 901	95,093.34	95,104.84	6759.2	6759.6	RE-BAR
SPOKANE (706)	92,161.47	89,975.79	6715.2	6717.4	RE-BAR
LIMONITE (1002)	95,745.65	88,777.64	7181.5		
RICK (1008)	89,813.49	86,818.19	7430.7		ALUMINUM BAR
REVERBRAIT	95,594.26	81,664.72	7818.0	7818.0	R.C.L.S. 1001 21.1 ALUMINUM BAR
ROAD	98,457.73	107,903.75	5428.5		

STATION	BALANCED CO-ORDINATES		ELEVATION GROUND	ELEVATION TOP OF MARK	REMARKS
	NORTHINGS	EASTINGS			
ZUBE (1005)	100,064.51	101,207.23	5247.2	5250.7	ALUMINUM BAR IN STUMP
SUNRAY (S.R.O. NO. 1006)	99,991.37	104,795.16	5227.3	5228.3	ALUMINUM BAR
GRANITE	87,216.47	106,615.90	5609.4	5609.4	RE-BAR
WET (1007)	100,588.39	88,030.62	5797.0	5797.2	ALUMINUM BAR
SANDY	86,468	106,819	8843		ROCK CAIRN
SANDY PICTURE CAIRN	87,383	107,874	8774		G. LEVEL

# 2226 B

Department of  
 Mines and Petroleum Resources  
 ASSESSMENT REPORT  
 NO. 2226B MAP #1

REV. NO. DATE: \_\_\_\_\_  
 SCURRY-RAINBOW OIL LIMITED  
 CANOO MINES  
 GRANITE CREEK, B.C.  
 McELHANNAY SURVEYING & ENGINEERING LTD.  
 SCALES: 1 INCH = 1000 FEET  
 DESIGNED: J.W.P.M. DATE: SEPT. 5TH. 1969  
 CHECKED: \_\_\_\_\_  
 APPROVED: \_\_\_\_\_  
 PROJECT NO. 08117  
 MODEL DWG. NO. 08117-1