

22 33

REPORT ON A GEOCHEMICAL SURVEY
ON LORNA, MAT, MARS, PAM MINERAL CLAIMS
HIGHLAND VALLEY, BRITISH COLUMBIA
KAMLOOPS MINING DIVISION $50^{\circ} 25'$ - $121^{\circ} 10'$ S.E.
FOR
ZENITH MINING CORPORATION LTD. (NPL)
AUGUST 6-23, 1969.

DECEMBER 15, 1969.

M. P. STADNYK, B.Sc.

INDEX

	<u>PAGE</u>
INTRODUCTION	1
LOCATION AND ACCESS	1
PHYSIOGRAPHY	1
MINERAL CLAIMS	2
HISTORY	3
GEOCHEMICAL SURVEY	3
Grid Control	3
Soil Sampling	3
GEOCHEMICAL ANALYSIS	4
INTERPRETATION	4
PERSONNEL	5
CAMP	5
EQUIPMENT	5
CONCLUSIONS	5
RECOMMENDATIONS	6
 <u>APPENDIX</u>	
DECLARATION OF EXPENDITURES	7
CERTIFICATION	
GEOCHEMICAL ASSAYS	
MAPS	
#1 Mineral Claim Map & Grid Location - 1" = 1000' - (Pocket)	
#2 Mineral Claim Map	Scale :- 1 inch to 1000 feet. (Pocket)
#3 Geochemical Survey Map	Scale :- 1 inch to 400 feet. (Pocket)
(copper)	

Department of
Mines and Petroleum Resources
ASSESSMENT REPORT

NO. **2233** MAP

INTRODUCTION

A systematic search for copper mineralization on mineral claims held by Zenith Mining Corporation Ltd. (NPL) in the Highland Valley commenced on August 6, 1969. Particular emphasis was placed on the northern block of claims which in the past only had road construction and trenching work performed.

An induced polarization survey was conducted over all claims held by the company and also on adjoining ground to the north-east held by Mollie Mac Mines Ltd. (NPL). Line cutting and soil sampling was also carried out on Mollie Mac property and results of this work will be covered in a separate report. Zenith claim maps will also show those claims upon which surveys were carried out on Mollie Mac Mines Ltd.

LOCATION AND ACCESS

The Zenith Mining Corp. Ltd. property is situated two miles west-north-west of Pimainus Lake or approximately two miles south-west of Calling Lake in Highland Valley region of south-eastern British Columbia. It is ten miles due east of Spences Bridge, B.C.

Co-ordinates of the northern portion of the property are $121^{\circ} 10'$ west longitude and $50^{\circ} 25'$ north latitude.

Access is possible from the Highland Valley through Lornex Mining Corporation's road to Pimainus Lake, or by Alwin Mining Company and the Calling Lake roads. These roads connect with the paved road to Ashcroft and Vancouver, B.C.

PHYSIOGRAPHY

With the exception of a few high rocky hills in the north-eastern portion of the property (Pam #1, #3, Mars Fr. #1), relief is generally low and dips gently southwards.

A prominent swampy area along the southern margins of the Mars claims trends westerly and forms the main watershed for the north branch of Pimainus Creek. Other bog or swamp areas trend north and south into this westerly draining swamp.

Overburden is shallow and rarely exceeds forty feet in depth.

Vegetation consists of lodge pole pines, birch, buck brush and swamp grass.

MINERAL CLAIMS

Mineral claims upon which the geochemical survey was carried out are :-

<u>Claim Name</u>	<u>Record Number</u>
Lorna 29-31	52616-618
Mat 9-20	52841-852
Mars 1-19	54394-412
Pam 1,3,5,7,9	52938-40-42-44-46
Pam 11,13,15,17	52948-50-52-54
Lorna Fr. #3	65645
Mars Fr. #1	66673
Pam Fr.	66404
Pamm	66403
* Ban 1-3	74423-425
* Jonn 1-3	81570-572
* Jonn Fr. #4	81573
* Brennan 2,4	74120-122
* Jon 2	74420

An induced polarization survey was conducted over the above mineral claims and also :-

Lorna 1-15	52588-602
Lorna 18-28	52605-615
Zen 1-6	53559-564
Lorna Fr. 1,2	65643-644
Lorna Fr. 4-8	65651-652
Mac 4,5	65651-652
Mat 1,8	52833-840

Zenith Mining Corporation Ltd. (NPL) own the above mineral claims, with the exception of those marked with an asterisk (*), which belong to Mollie Mac Mines Ltd. (NPL). All claims are located in the Kamloops Mining Division.

HISTORY

Previous work on this property includes line cutting and geochemical surveys over the southern mineral claims, as reported in assessment work reports submitted on 29 November, 1967 and February 21, 1969 by P. Stadnyk.

Physical work includes road construction and caterpillar trenching.

GEOCHEMICAL SURVEY

Grid Control

Amex Mining Services Ltd. of Kamloops, B.C. cut and chained 44 miles of line; tie-and cross-lines. A tie-line from the base-line on the southern grid originating at 70+00N was carefully recut to 42+00W. This point then became the control station for a secondary base line running north and south and was designated BL #2, 20N. This base line was carefully cut out to 00S, and 108N. Stations were marked and flagged at 200 foot intervals. East-west cross lines as shown on the accompanying geochemical survey map, were cut out at 400 foot intervals along the base line and similarly marked and flagged at 200 foot intervals. Tie lines were placed at 24W, 44W, 70W, and 40E. An acceptable closure was obtained on most lines. Some magnetic influences created problems for line cutters at the south end of the grid. Eleven miles of line were also cut out on the Mollie Mac Mines Ltd. ground to the north-east. Amex crew were on the property from August 6-22, 1969.

Soil Sampling

1,113 soil samples were taken by three Zenith personnel between August 9 and 23, 1969.

Samples were taken at 200 foot intervals along all lines with additional samples taken in drainage areas such as creek beds, bogs and swamp areas. Each hole was dug with a mattock to a depth of approximately ten inches. A spoon was used to take the soil sample which was placed in a kraft paper envelope. The location of the sample was marked on the envelope.

The following data was recorded for each sample :- location, vegetation cover, slope, description of soil type, texture and colour, sample depth, estimate of overburden where possible and other relevant comments.

GEOCHEMICAL ANALYSIS

All samples were sent to Chemex Labs Ltd., North Vancouver, B.C., where they were tested for copper in parts per million.

Samples were dried and sieved to - 80 mesh fraction. 0.5 gram of the fraction was digested with hot 70% perchloric and concentrated nitric acid for a period of four hours. Analysis for copper in ppm was by atomic absorption.

Certificates of analysis are included in the appendix of this report.

INTERPRETATION

Statistical analysis of all determinations (1374) using cumulative frequency percent vs range of copper ppm. revealed a background value of 70 ppm Cu. and anomalous values for those determinations above 100 ppm Cu. Values range from 13 to 3600 ppm Cu.

As can be seen from the accompanying geochemical map, anomalous zones of possible importance lie east of the road in the north, and west of the road in the south. Anomalous zones north of 48+00N and east of 20+00W are generally associated with bog areas, creeks, or swamps.

Narrow anomalous zones closely associated with north or south draining bogs and swamps into a much larger swamp - open water area trending WNW from 52+00N, 40+00E to BL, 66+00N could indicate zones of mineralization along shear zones with cross shears in the area of the E-W swamp. Although the overburden is generally under fifty feet in depth and mineralized float has been found in the area, the only methods of testing for mineralized shear zones would be with geophysical surveys or drilling.

PERSONNEL

All work on Zenith Mining Corporation Ltd. property was carried out under the direction of M. P. Stadnyk (Geologist).

Line cutting was performed by Amex Mining Services Ltd., of Kamloops, B. C. on a mileage contract. This crew was on the property from August 6 to 23, 1969.

Zenith personnel used on soil sampling were B. Blackman, C. MacDonald, and I. LeCheminant between August 9 and 23, 1969.

CAMP

A small camp was set up at line 64+00N, 6+00W to serve the line-cutters, soil sampling crew and later the induced polarization survey crew. Zenith supplied a 9x9 walltent for sleeping quarters and a 12x14 tent for cooking purposes.

EQUIPMENT

Tents, beds and cooking utensils were supplied by Can West Investments Ltd. for this programme. Can West also supplied a 3/4 ton 4x4 truck for seven days, and Zenith rented a 1/2 ton 4x4 from Tilden Rentals Ltd., Kamloops, from August 8 to 23, 1969.

CONCLUSIONS

Work performed on Zenith Mining Corporations property during August 1969 consisted of line cutting, soil sampling and minor road construction and repairs.

The geochemical survey revealed narrow strong north trending copper anomalies such as found on the southern portion of the property in previous surveys. These linear anomalies could represent shear zones.

A strong, irregular shaped westerly trending anomaly coincides closely with a large swamp which forms the head waters of the North Pimainus Creek. This anomaly could be the result of either drainage (from north and south slopes) or a cross fault system.

RECOMMENDATIONS

The following work is recommended for future work programmes :-

1. Careful geological mapping and prospecting in the vicinity of anomalies reported in this report.
2. A magnetometer survey programme with readings at 100 foot intervals in the area of geochemical anomalies to detect possible rock alteration.
3. Limited trenching or drilling in the most promising areas after 1 or 2 of the above recommendations have been carried out.

Report respectfully submitted,


M.P. Stadnyk, B.Sc.

December 15, 1969.

DECLARATION OF EXPENDITURESLine Cutting

Amex Exploration Services - August 1969	\$6916.00	
(This includes 4 days on Mollie Mac Mines Ltd. property)		
11 miles @ \$125 per mile		
(Statement attached)	<u>1375.00</u>	\$ 5541.00

Soil Sampling - Wages

B. Blackman - August 9-23/69.	360.00	
15 days @ \$24 per day		
C. MacDonald - August 9-17/69.		
9 days @ \$20 per day	180.00	
I. LeCheminant - August 18-23/69.		
6 days @ \$20 per day	<u>120.00</u>	660.00

Soil Analysis

Chemex Labs Ltd.		1202.00
------------------	--	---------

Truck Rental

Can West Investments Ltd., Vancouver	140.00	
7 days @ \$20 per day		
Tilden Rent-A-Car, Kamloops, B.C.		
16 days @ \$15 per day	<u>240.00</u>	380.00

Camp

August 9-23/69 - 2 men		
30 man days @ \$10 per day		300.00

Supervision

M.P. Stadnyk - 7 days @ \$75 per day		525.00
--------------------------------------	--	--------

Geochemical Report

Preparation of Report & Maps December 13-14/69.		<u>150.00</u>
---	--	---------------

TOTAL

\$8,758.00

CERTIFICATION

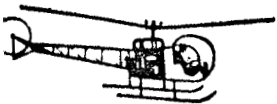
I, MIKE PETER STADNYK, of North Vancouver, B.C.
do hereby certify that :

1. I am a Mining Exploration Geologist residing
at Suite 15, 2697 Whitley Court, North Vancouver, B. C.
2. I am a graduate of the University of New Zealand
and have practised my profession in Canada for the past
eight years.
3. The information contained in this report was
based upon work carried out by me or at my direction,
between the period of August 6 and August 23, 1969.



M. P. STADNYK, B.Sc.
Geologist.

16 December 1969.
North Vancouver, B.C.



AMEX EXPLORATION SERVICES LTD.

CONFIDENTIAL WORK

BOX 286, KAMLOOPS, B.C.

November 28, 1969

Zenith Mining Corporation Ltd.,
1770-777 Hornby Street,
Vancouver 1, B.C.

Attn: M.P. Stadnyk

The following is a breakdown of our direct costs, and personnel engaged in July and August, 1969, during completion of 55.1 miles of grid preparation on your PAM, MARS, MAT and LORNA claims, situated in the Calling Lake area, Highland Valley, Ashcroft, B.C:

<u>PERSONNEL ENGAGED</u>	<u>TIME EXPENDED</u>	<u>WAGES</u>	
J. Anderson	14 days	\$ 491.40	
F. Froste	14 days	491.40	
B. Bried	8 days	280.80	
G. Lyall	9 days	315.90	
B. Jennen	14 days	491.40	
J. Hrynuik	12 days	421.20	
M. Giesbrecht	12 days	421.20	
W. Metcalfe	12 days	421.20	
D. Ringer	8 days	280.80	
G. Siemens	14 days	491.40	
G. Larouche	7 days	245.70	
K. McMillan	7 days	245.70	
G. Westwater	7 days	245.70	
P. Wilson	8 days	280.80	
M. Weddell	3 days	105.30	
A. Ablett	10 days	591.10	
		<u>\$5821.00</u>	\$5821.00

DIRECT COSTS

2 only 4-wheel drives, 14 days			
each @ \$15 per day	= \$	420.00	
accommodation (16 men)	=	540.00	
power saws-3 for 9 days			
@ \$5 per day	=	135.00	
		<u>\$1095.00</u>	\$1095.00

total costs

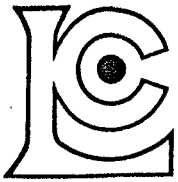
Respectfully submitted,

A. A. Ablett

Amex Exploration Services Ltd.

CLAIM STAKING, SURVEYING, MAPPING, LINE CUTTING, GEOCHEMICAL SURVEYS, ETC.

= \$6916.00



ZENITH MINING CORPORATION
LTD. (NPL)

CHEMEX LABS LTD.

1416 CROWN STREET
NORTH VANCOUVER, B.C.
CANADA
TELEPHONE: 988-6955

- CHEMISTS
- GEOCHEMISTS
- ANALYSTS
- ASSAYERS

CERTIFICATE OF ANALYSIS

NO. 5901

TO: Can-West Investments Ltd.,
#1770 777 Hornby St.,
Vancouver, B.C.

INVOICE NO. 1860

DATE RECEIVED Aug. 25, 1969

DATE ANALYSED Aug. 27, 1969

ATTN: Mr. M. Stadnyk

SAMPLE NO.:	ppm
	Copper
BL 0 N	54
2	80
4	48
5	38
6	82
8	370
10	54
12	48
14	28
15	24
16	62
18	44
20	64
22	58
24	82
25	58
26	33
28	66
30	18
31	585
32	22
34	98
36	21
38	68
40	54
42	63
44	70
46	66
48	104
50	58
52	72
54	96
56	100
58	72
60	86
62	141
64	92
66	68
68	54
BL 70 N	118

Certified by

L. Fournier



CHEMEX LABS LTD.

1416 CROWN STREET
NORTH VANCOUVER, B.C.
CANADA
TELEPHONE: 988-6955

• CHEMISTS • GEOCHEMISTS • ANALYSTS • ASSAYERS

CERTIFICATE OF ANALYSIS

NO. 5902

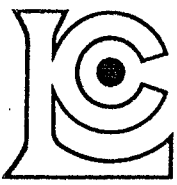
TO: Can-West Investments Ltd.,
#1170-777 Hornby St.,
Vancouver, B. C.

INVOICE NO. 1860
DATE RECEIVED August 25/69
DATE ANALYSED August 27/69

ATTN: Mr. M. Stadnyk

SAMPLE NO.:	PPM
	Copper
B.L.72N	195
74	195
76	66
78	585
80	630
81	136
82	50
84	128
86	330
88	63
90	680
92	122
94	78
96	100
98	33
B.L.100N	44
B.L.66.4N	128 - ?
ON 2W	94
4	58
6	160
8	134
9	298
10	52
12	102
13	700
14	88
15	700
16	56
18	80
ON 20W	93
5N 2W	246
4	156
6	69
8	100
10	465
12	145
14	80
15	1700
16	102
5N 18W	179
Std. #14	370

Certified by *L. Twaites*



CHEMEX LABS LTD.

1416 CROWN STREET
NORTH VANCOUVER, B.C.
CANADA
TELEPHONE: 988-6955

• CHEMISTS • GEOCHEMISTS • ANALYSTS • ASSAYERS

CERTIFICATE OF ANALYSIS

NO. 5903

TO: Can-West Investments Ltd.-
#1770 - 777 Hornby St.,
Vancouver, B. C.

INVOICE NO. 1860
DATE RECEIVED August 25/69
DATE ANALYSED August 27/69

ATTN: Mr. M. Stadnyk

SAMPLE NO.:	PPM	
		Copper
5N20W	124	
10N 2W	54	
4	131	
6	104	
8	111	
10	120	
12	72	
14	51	
16	102	
18	42	
10N 20W	131	
15N 2W	38	
4	55	
6	59	
8	36	
9	200	
10	213	
12	143	
14	246	
16	42	
18	69	
20	91	T. L. - ?
15N 20W	80	
20N 2W	252	
4	85	
6	83	
8	80	
10	48	
12	115	
14	64	
16	38	
18	111	
19	380	
20	48	
22	40	
20N 24W	120	
25N 2E	168	
4	52	
6	36	
25N 6.5E	102	

Certified by

L. Swaites



CHEMEX LABS LTD.

1416 CROWN STREET
 NORTH VANCOUVER, B.C.
 CANADA
 TELEPHONE: 988-6955

• CHEMISTS • GEOCHEMISTS • ANALYSTS • ASSAYERS

CERTIFICATE OF ANALYSIS

NO. 5904

TO: Can-West Investments Ltd.,
 #1770 777 Hornby St.,
 Vancouver, B.C.

INVOICE NO. 1860

DATE RECEIVED August 25, 1969

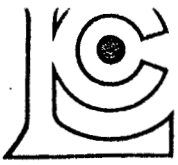
DATE ANALYSED August 27, 1969

ATTN: Mr. M. Stadnyk

SAMPLE NO.:	ppm
	Copper
25N 8 E	89
25N 10E	298
25N 12E	50
25+50N 12E	380 - ?
25N 14E	60
16E	59
18E	70
20E	76
22E	96
24E	98
25N 26E	60
25N 2W	62
4W	45
6W	50
8W	40
10W	52
12W	45
14W	82
16W	330
18W	133
20W	65
22W	46
25N 24W	52
30N 2E	40
4E	48
6E	174
8E	290
9E	233
10E	91
12E	65
14E	1000
14+50E	213
16E	168
18E	51
20E	87
22E	74
24E	85
30N 26E	60
30N 2W	527
30N 4W	54
Standard Soil #14	370

Certified by

L. Swaiter



CHEMEX LABS LTD.

1416 CROWN STREET
NORTH VANCOUVER, B. C.
CANADA
TELEPHONE: 988-6955

• CHEMISTS • GEOCHEMISTS • ANALYSTS • ASSAYERS

CERTIFICATE OF ANALYSIS

NO. 5905

TO: Can-West Investments Ltd.,
#1770 777 Hornby St.,
Vancouver, B.C.

INVOICE NO. 1860

DATE RECEIVED August 25, 1969

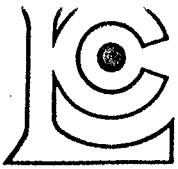
DATE ANALYSED August 27, 1969

ATTN: Mr. M. Stadnyk

SAMPLE NO.:	ppm Copper
30N 6W	111
8W	62
10W	174
12W	40
14W	282
16W	392
18W	65
20W	65
22W	40
30N 24W	51
35N 2E	111
4E	138
6E	126
8E	48
10E	52
12E	60
14E	72
16E	72
18E	80
20E	80
22E	67
24E	70
35N 26E	85
35N 2W	43
4W	45
6W	38
8W	74
10W	57
12W	55
14W	55
16W	89
18W	93
20W	33
22W	52
35N 24W	26
40N 2E	69
4E	51
6E	80
8E	93
10E	65
40N 12E	85

Certified by

L. Swaites



CHEMEX LABS LTD.

1416 CROWN STREET
NORTH VANCOUVER, B. C.
CANADA
TELEPHONE: 988-6955

• CHEMISTS • GEOCHEMISTS • ANALYSTS • ASSAYERS

CERTIFICATE OF ANALYSIS

NO. 5906

TO: Can-West Investments Ltd.,
#1770 777 Hornby St.,
Vancouver, B.C.

INVOICE NO. 1360

DATE RECEIVED August 25, 1969

DATE ANALYSED August 27, 1969

ATTN: Mr. M. Stadnyk

SAMPLE NO.:	ppm
	Copper
40N 14E	70
16E	65
18E	70
20E	62
22E	82
24E	109
40N 26E	59
40N 2W	55
4W	60
6W	72
8W	76
10W	42
12W	69
14W	46
16W	52
18W	78
20W	40
22W	23
40+175 ft. N/20+75'W	57
40N 24W	102
26W	40
28W	117
40N 30W	35
44N 2E	57
4E	72
6E	55
8E	52
10E	54
12E	65
14E	55
16E	64
18E	87
20E A	83
LCT 20E B	24-?
22E	67
24E	80
26E	91
28E	72
28+10'E	440
30E	64
32E	59
44N 34E	70
Standard Soil #14	370

Certified by *L. Swaites*



CHEMEX LABS LTD.

1416 CROWN STREET
NORTH VANCOUVER, B.C.
CANADA
TELEPHONE: 988-6955

• CHEMISTS • GEOCHEMISTS • ANALYSTS • ASSAYERS

CERTIFICATE OF ANALYSIS

NO. 5907

TO: Can-West Investments Ltd.,
#1770 777 Hornby St.,
Vancouver, B.C.

INVOICE NO. 1860

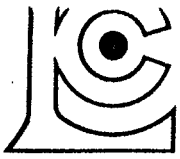
DATE RECEIVED August 25, 1969

DATE ANALYSED August 27, 1969

ATTN: Mr. M. Stadnyk

SAMPLE NO.:	ppm
	Copper
44N 36E	64
38E	59
43+60N/39+78E ?	57
44N 2W	69
4N	65
6W	51
8W	46
10W	52
12W	60
14W	76
16W	59
18W	55
20W	74
22W	72
44+2N/21+50W	42
44N 24W	48
28W - 26W missing	43
44N 30W	200
48N 2E	70
4E	87
6E	65
8E	83
10E	72
12E	76
14E	104
16E	126
18E	104
20E	233
22E	85
24E	143
26E	55
27E	330
28E	124
30E	69
32E	70
34E	65
36E	240
38E	426
48N 40E	83

Certified by L. Swaites



CHEMEX LABS LTD.

1416 CROWN STREET
NORTH VANCOUVER, B. C.
CANADA
TELEPHONE: 988-6955

• CHEMISTS • GEOCHEMISTS • ANALYSTS • ASSAYERS

CERTIFICATE OF ANALYSIS

NO. 5908

TO: Can-West Investments Ltd.,
#1770 777 Hornby St.,
Vancouver, B.C.

INVOICE NO. 1860

DATE RECEIVED August 25, 1969

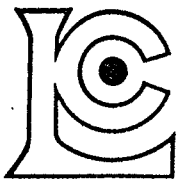
DATE ANALYSED August 27, 1969

ATTN: Mr. M. Stadnyk

SAMPLE NO.:	ppm
	Copper
48N 2W	69
4W	240
6W	102
8W	87
10W	89
12W	65
14W	54
16W	38
18W	115
20W	87
48N 22W	33
49N 21+25W	51
48N 24W	46
26W	36
28W	107
48N 30W	80
52N 2E	83
4E	55
6E	54
8E	43
10E	46
12E	76
14E	82
16E	69
18E	315
20E	195
22E	370
24E	54
26E	55
27E	184
28E	93
30E	60
32E	69
34E	76
36E	60
38E	380
52N 40E	96
52N 2W	72
4W	80
52N 6W	102
Standard Sbil #14	370

Certified by

L. Swaites



CHEMEX LABS LTD.

1416 CROWN STREET
NORTH VANCOUVER, B. C.
CANADA
TELEPHONE: 988-6955

- CHEMISTS
- GEOCHEMISTS
- ANALYSTS
- ASSAYERS

CERTIFICATE OF ANALYSIS

NO. 5909

TO: Can-West Investments Ltd.,
#1770 - 777 Hornby St.,
Vancouver, B. C.

INVOICE NO. 1860

DATE RECEIVED August 25/69

DATE ANALYSED August 27/69

ATTN: Mr. M. Stadnyk

SAMPLE NO.:	PPM
	Copper
52N 8W	76
10	195
12	58
14	82
16	50
18	147
20	220
52+50N.21+31W	114
52N 22W	133
24	62
26	87
28	124
28.4	52
52N 30W	126
56N 2E	80
4	70
6	89
8	93
10	36
12	51
14	140
16	79
18	111
20	200
22	360
24	298
26	72
28	48
30	60
32	315
33	380
34	138
36	62
37	510
38	700
56N 40E	465
56N 2W	74
4	93
6	93
56N 8W	67

Certified by *L. Twites*



CHEMEX LABS LTD.

1416 CROWN STREET
NORTH VANCOUVER, B.C.
CANADA
TELEPHONE: 988-6955

• CHEMISTS • GEOCHEMISTS • ANALYSTS • ASSAYERS

CERTIFICATE OF ANALYSIS

NO. 5910

TO: Can-West Investments Ltd.,
#1770 - 777 Hornby St.,
Vancouver, B. C.

INVOICE NO. 1860

DATE RECEIVED August 25/69

DATE ANALYSED August 27/69

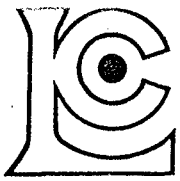
ATTN:

Mr. M. Stadyk

SAMPLE NO.:	PPM
	Copper
56N 10W	57
12	69
14	60
16	527
18	102
20W	195
55+45N. 21+20W	143
56N 22W	52
24	38
26	174
27.8	42
27.9.	133
28	87
56N 30W	57
60N 2E	91
4	143
6	100
8	93
10	82
12	195
60N 19+4E	157
20	246
LGT 22	74
60N 24	233
26	370
28	89
30	350
32	350
34	69
36	43
38	70
60N 40E	70
60N 2W	78
4	80
6	57
8	80
10	54
12	62
14	67
16	93
60N 18W	136
Std	370

Certified by

L. Swaites



CHEMEX LABS LTD.

1416 CROWN STREET
NORTH VANCOUVER, B.C.
CANADA
TELEPHONE: 988-6955

• CHEMISTS • GEOCHEMISTS • ANALYSTS • ASSAYERS

CERTIFICATE OF ANALYSIS

NO. 5911

TO: Can-West Investments Ltd.,
#1770 - 777 Hornby St.,
Vancouver, B. C.

INVOICE NO. 1860

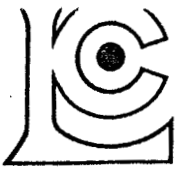
DATE RECEIVED August 25/69

DATE ANALYSED August 27/69

ATTN: Mr. M. Stadnyk

SAMPLE NO.:	PPM
	Copper
60N 20W	48
22	51
24	57
25	54
26	179
28	179
30	33
32	40
34	30
36	40
38	38
40	18
42	40
44	36
46	26
48	33
50	184
52	28
54	33
56	18
58	18
60N 60W	40
64N 2E	83
4	48
4.8	107
6	64
8	76
10	54
12	114
14	392
16	43
18	62
20	107
22	168
24	298
26	124
28	54
30	45
32	43
64N 34E	67

Certified by *L. Swaites*



CHEMEX LABS LTD.

1416 CROWN STREET
NORTH VANCOUVER, B.C.
CANADA
TELEPHONE: 988-6955

• CHEMISTS • GEOCHEMISTS • ANALYSTS • ASSAYERS

CERTIFICATE OF ANALYSIS

NO. 5912

TO: CanWest Investments Ltd.,
#1770 - 777 Hornby St.,
Vancouver, B. C.

INVOICE NO. 1860

DATE RECEIVED August 25/69

DATE ANALYSED August 27/69

ATTN: Attn: Mr. M. Stadnyk

SAMPLE NO.:	PPM Copper
64N 36E	69
38	100
40	59
40E	59 ?
42	104
44	78
46	55
47	700
48	60
50	51
52	64
54	67
56	91
58	380
60	69
62	104
64	115
66	109
68	69
70	83
64N 70E	91
64N 2W	87
4	69
6	74
8	78
10	51
12	51
14	35
16	38
18	57
20	52
22	120
23S	46
24	60
26	109
28	36
30	55
32	40
34	48
64N 36W	45
Std. #14	370

Certified by

L. Twites



CHEMEX LABS LTD.

1416 CROWN STREET
NORTH VANCOUVER, B.C.
CANADA
TELEPHONE: 988-6955

• CHEMISTS • GEOCHEMISTS • ANALYSTS • ASSAYERS

CERTIFICATE OF ANALYSIS

NO. 5913

TO: Can-West Investments Ltd.,
#1770 - 777 Hornby St.,
Vancouver, B. C.

INVOICE NO. 1860

DATE RECEIVED August 25/69

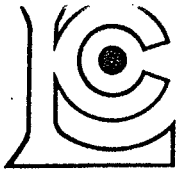
DATE ANALYSED August 27/69

ATTN: Mr. M. Stadnyk

SAMPLE NO.:	PPM
	Copper
64N 38W	60
40	45
42	38
44A	23
44B	67
63+60N.44+39W	30
64N 46W	32
48	32
50	26
52	33
54	50
56	33
58	22
64N 60W	54
68N 2E	96
4	168
6	82
8	100
10	48
12	117
14	62
16	57
18	76
20	64
22	36
24	78
26	306
27	200 -
28	43
30	78
32	69
34	59
36	60
38	57
40	78
42	78
44	83
46	453
48	370
68N 50E	220

Certified by

L. Twaites



CHEMEX LABS LTD.

1416 CROWN STREET
NORTH VANCOUVER, B.C.
CANADA
TELEPHONE: 988-6955

• CHEMISTS • GEOCHEMISTS • ANALYSTS • ASSAYERS

CERTIFICATE OF ANALYSIS

NO. 5914

TO: Can-West Investments Ltd.,
#1770 777 Hornby St.,
Vancouver, B.C.

INVOICE NO. 1860

DATE RECEIVED August 25, 1969

DATE ANALYSED August 27, 1969

ATTN: Mr. M. Stadnyk

SAMPLE NO.:	ppm Copper
68N 52E	46
54E	179
56E	76
58E	168
60E	87
62E	33
64E	83
66E	67
68E	392
68N 70E	200
68N 2W	527
4W	315
6W	74
8W	91
10W	213
12W	85
14W	200
16W	74
18W	57
20W	78
22W	43
24W	36
26W	51
28W	76
30W	89
32W	60
34W	42
36W	59
38W	36
40W	46
42W	30
44W	54
44W	33 - ?
46W	51
48W	52
50W	33
52W	35
54W	67
56W	26
68N 58W	67

Certified by *L. Swait*



CHEMEX LABS LTD.

1416 CROWN STREET
NORTH VANCOUVER, B.C.
CANADA
TELEPHONE: 988-6955

• CHEMISTS • GEOCHEMISTS • ANALYSTS • ASSAYERS

CERTIFICATE OF ANALYSIS

NO. 5915

TO: Can-West Investments Ltd.,
#1770 777 Hornby St.,
Vancouver, B.C.

INVOICE NO. 1860

DATE RECEIVED Aug. 25, 1969

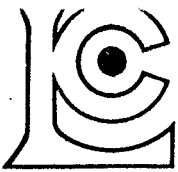
DATE ANALYSED Aug. 27, 1969

ATTN: Mr. M. Stadnyk

SAMPLE NO.:	ppm
	Copper
68N 60W	51
62W	60
64W	32
66W	52
68W	69
70W	40
72W	35
68N 74W	36
69+33N/44+40W	28
71+52N/40+26E	70 -
72N 2E	213
4E	190
6E	131
8E	174
10E	87
12E	74
14E	54
16E	91
18E	62
20E	38
22E	60
24E	74
26E	36
27E	495 -
28E	52
30E	60
32E	70
34E	60
36E	51
38E	69
40E	67
40E	67 -
42E	69
43.25	370 -
44E	55
46E	1000
48E	89
50E	60
52E	55
72N 54E	67

Certified by

L. Swaites



CHEMEX LABS LTD.

1416 CROWN STREET
NORTH VANCOUVER, B.C.
CANADA
TELEPHONE: 988-6955

• CHEMISTS • GEOCHEMISTS • ANALYSTS • ASSAYERS

CERTIFICATE OF ANALYSIS

NO. 5916

TO: Can-West Investments Ltd.,
#1770 777. Hornby St.,
Vancouver, B.C.

INVOICE NO. 1360

DATE RECEIVED Aug. 25, 1969

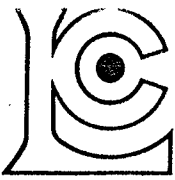
DATE ANALYSED Aug. 27, 1969

ATTN: Mr. M. Stadnyk

SAMPLE NO.:	ppm
	Copper
72N 56E	82
58E	163
60E	62
62E	65
64E	80
65E	143
66E	72
68E	54
72N 70E	54
T/L 72N	57
72N 2W	89
4W	122
6W	179
8W	55
10W	54
12W	52
14W	323
16W	59
18W	91
20W	65
22W	43
24W	36
26W	42
28W	89
30W	52
32W	69
34W	52
36W	62
38W	48
40W	38
42W	80
44W	30
72+176N/44+56W	26 -
72N 44W	69 -
46W	67
48W	246
50W	82
52W	48
54W	42
72N 56W	102

Certified by

A. Twite



CHEMEX LABS LTD.

1416 CROWN STREET
NORTH VANCOUVER, B. C.
CANADA
TELEPHONE: 988-6955

• CHEMISTS • GEOCHEMISTS • ANALYSTS • ASSAYERS

CERTIFICATE OF ANALYSIS

NO. 5917

TO: Can-West Investments Ltd.,
#1770 777 Hornby St.,
Vancouver, B.C.

INVOICE NO. 1860

DATE RECEIVED Aug. 25, 1969

DATE ANALYSED Aug. 27, 1969

ATTN: Mr. M. Stadnyk

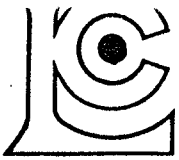
SAMPLE NO.:	ppm
	Copper
72N 58W	50
60W	51
62W	76
64W	48
66W	30
68W	40
72N 70W	30
70+150N/70+35W	24 -
72N 72W	85
72N- 74W	109
74+55N 70W	174 -
76N 2E	59
4E	115
6E	138
8E	100
10E	70
12E	184
14E	100
16E	32
18E	52
20E	30
22E	35
24E	30
26E	710
28E	45
30E	67
32E	145
34E	67
36E	114
38E	65
40E	59
40E	72 -
42E	69
44E	43
44+75	700 -
46E	1000
48E	453
50E	52
52E	426
54E	65
76N 56E	50

Standard Soil #14

380

Certified by

L. Swait



CHEMEX LABS LTD.

1416 CROWN STREET
NORTH VANCOUVER, B.C.
CANADA
TELEPHONE: 988-6955

• CHEMISTS • GEOCHEMISTS • ANALYSTS • ASSAYERS

CERTIFICATE OF ANALYSIS

NO. 5918

TO: Can-West Investments Ltd.,
#1770 777 Hornby St.,
Vancouver, B.C.

INVOICE NO. 1860

DATE RECEIVED Aug. 25, 1969

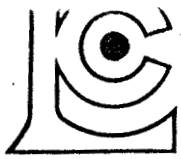
DATE ANALYSED Aug. 27, 1969

ATTN: Mr. M. Stadnyk

SAMPLE NO.:	ppm
	Copper
76N 58E	48
60E	54
62E	36
64E	104
66E	527
68E	290
76+88N/69+80'E	48
76N 2W	1000
4W	267
6W	850
8W	1200
10W	274
12W	220
14W	392
16W	43
18W	64
20W	57
22W	43
24W	43
26W	52
28W	51
30W	82
32W	60
34W	55
36W	42
38W	24
40W	28
42W	33
44W	22
46W	78
48W	59
50W	30
52W	104
54W	57
56W	22
58W	57
60W	76
62W	48
64W	370
76N 66W	52

Certified by

H. Swantes



CHEMEX LABS LTD.

1416 CROWN STREET
NORTH VANCOUVER, B. C.
CANADA
TELEPHONE: 988-6955

• CHEMISTS • GEOCHEMISTS • ANALYSTS • ASSAYERS

CERTIFICATE OF ANALYSIS

NO. 5919

TO: Can-West Investments Ltd.,
#1770 777 Hornby St.,
Vancouver, B.C.

INVOICE NO. 1860

DATE RECEIVED Aug. 25, 1969

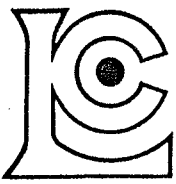
DATE ANALYSED Aug. 27, 1969

ATTN: Mr. M. Stadnyk

SAMPLE NO.:	ppm Copper
76N 68W	168
70W	54
72W	32
76N 74W	57
80N 2E	65
4E	89
6E	70
8E	57
10E	50
12E	43
14E	69
16E	45
17E	82
18E	51
20E	43
22E	38
22.7E	545 -
24E	900
26E	233
28E	157
30E	98
32E	82
34E	74
36E	62
38E	48
38.7E	122 -
40E	52
T/L 80N 40E	60 -
42E	69
44E	585
46E	415
48E	76
50E	102
52E	51
54E	69
56E	87
58E	54
80+36N/69+91E	184 -
80N 60E	76
80N 62E	76
Standard Soil #14	380

Certified by

L. Twites



CHEMEX LABS LTD.

1416 CROWN STREET
NORTH VANCOUVER, B.C.
CANADA
TELEPHONE: 988-6955

• CHEMISTS • GEOCHEMISTS • ANALYSTS • ASSAYERS

CERTIFICATE OF ANALYSIS

NO. 5920

TO: Can-West Investments Ltd.,
#1770 777 Hornby St.,
Vancouver, B.C.

INVOICE NO. 1860

DATE RECEIVED Aug. 25, 1969

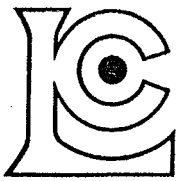
DATE ANALYSED Aug. 27, 1969

ATTN: Mr. M. Stadnyk

SAMPLE NO.:	ppm	
		Copper
80N 64E	102	
66E	55	
80N 68E	233	
79+50N/70E	495	
80N 64W	950	
2W	82	
4W	60	
6W	74	
8W	78	
10W	195	
12W	157	
14W	220	
15W	392	
16W	129	
18W	38	
20W	43	
22W	40	
24W	111	
26W	35	
28W	35	
30W	32	
32W	20	
34W	20	
36W	370	
36+170	38	
38W	83	
38W+120/80N	195	
80N ?	26	TL
80N 40W	23	
41W	114	
42W	22	
42+90	415	
44W	26	
46W	67	
48W	52	
50W	40	
52W	40	
54W	55	
56W	60	
80N 58W	78	

Certified by

A. Swait



CHEMEX LABS LTD.

1416 CROWN STREET
NORTH VANCOUVER, B.C.
CANADA
TELEPHONE: 988-6955

• CHEMISTS • GEOCHEMISTS • ANALYSTS • ASSAYERS

CERTIFICATE OF ANALYSIS

NO. 5921

TO: Can-West Investments Ltd.,
#1770 777 Hornby St.,
Vancouver, B.C.

INVOICE NO. 1860

DATE RECEIVED Aug. 25, 1969

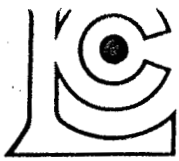
DATE ANALYSED Aug. 27, 1969

ATTN: Mr. M. Stadnyk

SAMPLE NO.:	ppm
	Copper
80N 60W	50
62W	46
64W	42
66W	33
80N 68W	76
79+15N/69+26W	50
80N 70W	40
72W	31
80N 74W	60
84N 2E	82
4E	40
4+40E	585' -
6E	42
8E	50
10E	40
12E	76
14E	42
16E	50
18E	46
20E	46
22E	50
22+20	380 -
24E	34
24+170	340 -
26E	74
28E	112
30E	52
32E	96
34E	63
36E	63
38E	52
84N 40E	44 -
84N 2W	56
4W	41
6W	50
8W	74
10W	102
11W	164
12W	112
84N 14W	44
Standard Soil #14	380

Certified by

L. Twites



CHEMEX LABS LTD.

1416 CROWN STREET
NORTH VANCOUVER, B. C.
CANADA
TELEPHONE: 988-6955

• CHEMISTS • GEOCHEMISTS • ANALYSTS • ASSAYERS

CERTIFICATE OF ANALYSIS

NO. 5922

TO: Can-West Investments Ltd.,
#1770 777 Hornby St.,
Vancouver, B.C.

INVOICE NO. 1860

DATE RECEIVED August 25, 1969

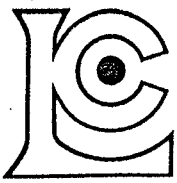
DATE ANALYSED August 27, 1969

ATTN: Mr. M. Stadnyk

SAMPLE NO.:	ppm
	Copper
84N 16W	40
16+50	370
18W	128
20W	40
22W	38
24W	31
26W	34
28W	36
30W	34
32W	33
34W	26
36W	26
38W	30
39.5W	74
40W	14
42W	22
42.72W	18
43.5W	340
44W A	16
44W B	104
85+33N/45+10W	80
84N 46W	16
47.75W	900
48W	63
50W	18
52W	51
54W	18
56W	28
58W	44
60W	76
62W	26
63.75W	527
64W	41
66W	21
67W	527
84N 68W	44
83.44N 68.98W	104
84N 70W	50
70.25	156
84N 71.75W	120
Standard Soil #14	380

Certified by

L. Swaites



CHEMEX LABS LTD.

1416 CROWN STREET
NORTH VANCOUVER, B.C.
CANADA
TELEPHONE: 988-6955

• CHEMISTS • GEOCHEMISTS • ANALYSTS • ASSAYERS

CERTIFICATE OF ANALYSIS

NO. 5923

TO: Can-West Investments Ltd.,
#1770 777 Hornby St.,
Vancouver, B.C.

INVOICE NO. 1860

DATE RECEIVED Aug. 25, 1969

DATE ANALYSED Aug. 27, 1969

ATTN: Mr. M. Stadnyk

SAMPLE NO.:	ppm	
	Copper	
84N 72W	22	
73.5W	52	
84N 74W	28	
88N 22W	40	
24W	24	
26W	56	
28W	36	
30W	26	
32W	22	
34W	36	
36W	38	
38W	20	
40W	24	
41W	48	
42W	21	
44W	20	
88N 44W	51	T.L. -
88+95N/44+86W	31	
88N 46W	48	
48W	70	
50W	46	
52W	54	
54W	21	
56W	31	
58W	72	
60W	24	
62W	16	
64W	13	
66W	13	
66.3W	63	
67W	63	
68W	24	
68.3W	156	
88N 70W	33	
88+43N/70W	40	
88N 72W	41	
88N 74W	34	
91+42N/69+27W	16	
92N 22W	38	
92N 24W	41	

Certified by

L. Swaites



CHEMEX LABS LTD.

1416 CROWN STREET
NORTH VANCOUVER, B. C.
CANADA
TELEPHONE: 988-6955

• CHEMISTS • GEOCHEMISTS • ANALYSTS • ASSAYERS

CERTIFICATE OF ANALYSIS

NO. 5924

TO: Can-West Investments Ltd.,
#1770 - 777 Hornby St.,
Vancouver, B. C.

INVOICE NO. 1860

DATE RECEIVED August 25/69

ATTN: Mr. M. Stadnyk

DATE ANALYSED August 27/69

SAMPLE NO.:	PPM Copper
92N 26W	40
28	33
30	33
32	22
34	24
36	34
38	30
40	18
42	34
42+30	100
44	22
46	21
48	44
50	28
52	31
54	58
56	28
58	24
60	26
62	52
64	31
66	233
92N 68W	46
96N 2E	62
2E+50	495
4E	48
6	64
8	44
10	56
12	213
14	88
16	28
18	36
20	102
22	70
24	174
26	44
28	495
30	50
96N 32E	62
Std. #14	380

Certified by *Lloyd Swait*



CHEMEX LABS LTD.

1416 CROWN STREET
NORTH VANCOUVER, B.C.
CANADA
TELEPHONE: 983-6955

• CHEMISTS • GEOCHEMISTS • ANALYSTS • ASSAYERS

CERTIFICATE OF ANALYSIS

NO. 5925

TO: Can-West Investments Ltd.,
#1770 777 Hornby St.,
Vancouver, B.C.

INVOICE NO. 1860

DATE RECEIVED Aug. 25, 1969

DATE ANALYSED Aug. 27, 1969

ATTN: Mr. M. Stadnyk

SAMPLE NO.:	ppm
	Copper
96N 34E	86
36E	195
38E	63
96N 40E	96
96N 2W	700
4W	70
6W	58
8W	1500
10W	92
12W	34
12+50	1000
14W	44
16W	50
18W	46
20W	136
22W	24
24W	21
26W	31
28W	22
30W	26
32W	24
34W	38
36W	34
38W	22
40W	16
44W	52
46W	38
48W	74
50W	34
51W	76
52W	21
54W	24
56W	104
58W	21
60W	46
62W	102
64W	50
66W	36
96N 68W	20

Certified by *L. Swaites*



CHEMEX LABS LTD.

1416 CROWN STREET
NORTH VANCOUVER, B. C.
CANADA
TELEPHONE: 988-6955

• CHEMISTS • GEOCHEMISTS • ANALYSTS • ASSAYERS

CERTIFICATE OF ANALYSIS

NO. 5926

TO: Can-West Investments Ltd.,
#1770 777 Hornby St.,
Vancouver, B.C.

INVOICE NO. 1860

DATE RECEIVED August 25, 1969

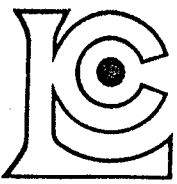
DATE ANALYSED August 27, 1969

ATTN: Mr. M. Stadnyk

SAMPLE NO.:	ppm
	Copper
96N 70W	60
72W	40
74W	42
76W	50
78W	50
80W	21
82W	41
84W	34
96N 86W	40
100N 2E	41
4E	86
6E	31
8E	84
10E	46
12E	138
12+150	184
14E	41
16E	40
18E	184
20E	44
22E	64
24E	92
26E	138
28E	44
30E	50
32E	116
34E	290
36E	655
38E	26
40E	2500
100N BL	42
100N 2W	62
4W	76
6W	62
8W	282
10W	48
12W	88
14W	48
16W	24
100N 18W	40
Standard Soil #14	380

Certified by

L. Swaites



CHEMEX LABS LTD.

1416 CROWN STREET
NORTH VANCOUVER, B. C.
CANADA
TELEPHONE: 988-6955

- CHEMISTS
- GEOCHEMISTS
- ANALYSTS
- ASSAYERS

CERTIFICATE OF ANALYSIS

NO. 5927

TO: Can-West Investments Ltd.,
#1770 - 777 Hornby St.,
Vancouver, B. C.

INVOICE NO. 1860
DATE RECEIVED August 25/69
DATE ANALYSED August 27/69

ATTN: Mr. M. Stadnyk

SAMPLE NO.:	PPM Copper
100N 20W	56
22	36
24	33
26	24
28	22
30	26
34	36
36	21
38	21
40	21
42	26
44	46
44+150	124
46	34
48	36
50	13
52	38
54	44
56	36
58	41
60	30
62	33
64	213
66	33
68	24
72	33
74	50
76	426
78	605
80	92
82	33
84	30
86	22
103N 86W	225
104W B.L.	28
104N 2W	44
4	50
6	41
8	63
104N 10W	54

Certified by *L. Swaites*



CHEMEX LABS LTD.

1416 CROWN STREET
NORTH VANCOUVER, B.C.
CANADA
TELEPHONE: 988-6955

• CHEMISTS • GEOCHEMISTS • ANALYSTS • ASSAYERS

CERTIFICATE OF ANALYSIS

NO. 5928

TO: Can-West Investments Ltd.,
#1770 - 777 Hornby St.,
Vancouver, B. C.

INVOICE NO. 1860

DATE RECEIVED August 25/69

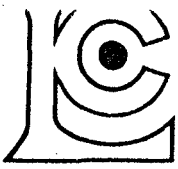
DATE ANALYSED August 27/69

ATTN: Mr. M. Stadnyk

SAMPLE NO.:	PPM Copper
104N 12W	51
14	220
16	174
18	200
20	66
22	184
24	48
26	14
28	22
30	38
32	18
34	20
36	38
38	41
40	54
42	54
104N 44W	36
104N TL	24
104N 72W	50
74	26
76	30
78	46
80	66
82	36
84	22
104N 86W	26
106+72N.69+65W	60
108N TL	38
108N 72W	42
74	33
76	46
78	50
80	44
82	51
84	415
108N 86W	33
112N TL	64
112N 72W	38
74	51
112N 76W	33

Certified by

L. Swaites



CHEMEX LABS LTD.

1416 CROWN STREET
NORTH VANCOUVER, B.C.
CANADA
TELEPHONE: 988-6955

• CHEMISTS • GEOCHEMISTS • ANALYSTS • ASSAYERS

CERTIFICATE OF ANALYSIS

TO: Can-West Investments Ltd.,
#1770 - 777 Hornby St.,
Vancouver, B. C.

ATTN: Mr. Stadnyk

NO. 5929
INVOICE NO. 1860
DATE RECEIVED August 2/5/69
DATE ANALYSED August 27/69

SAMPLE NO.:	PPM
	Copper
112N 78W	50
80	64
82	70
84	48
86	28
116N 70W	40
72	31
74	20
76	74
78	84
80	38
82	42
82+50	415
84	26
86	52
120N 70W	34
72	50
74	44
76	22
78	680
80	14
82	30
84	42
120N 86W	58
Std. #14	380

Certified by *A. Swaites*



ZNX

CHEMEX LABS LTD.

1416 CROWN STREET
NORTH VANCOUVER, B.C.
CANADA
TELEPHONE: 988-6955

• CHEMISTS • GEOCHEMISTS • ANALYSTS • ASSAYERS

CERTIFICATE OF ANALYSIS

NO. 6131

TO: Can-West Investments Ltd.
#1770 - 777 Hornby St.,
Vancouver, B. C.

INVOICE NO. 1909

DATE RECEIVED Sept. 3/69

DATE ANALYSED Sept. 5/69

ATTN: Mr. Mike Stadnyk

SAMPLE NO.:	PPM
	Copper
84N T.L.40E	70
42E	80
44E (-0)	710
46	115
48	72
50	96
52	111
54	45
56	48
58	62
60	147
62	83
64	51
66	65
68	87
70	510
72	163
74	136
76	57
78	45
80	33
82	67
84	48
86	51
88	46
84N 90E	76
88N 2E	45
4	45
4+30-0	1160
6	60
8	51
10	50
12	51
14	35
16	38
18	45
20	133
22	36
24	50
88N 26E	565

Certified by *A. D. Goodhart*



CHEMEX LABS LTD.

1416 CROWN STREET
NORTH VANCOUVER, B. C.
CANADA
TELEPHONE: 988-6955

• CHEMISTS • GEOCHEMISTS • ANALYSTS • ASSAYERS

CERTIFICATE OF ANALYSIS

NO. 6132

TO: Can-West Investments Ltd.,
#1770 - 777 Hornby St.,
Vancouver, B. C.

INVOICE NO. 1909

DATE RECEIVED Sept. 3/69

DATE ANALYSED Sept. 5/69

ATTN: Mr. Mike Stadnyk

SAMPLE NO.:	PPM Copper
88N 28E	138
30	133
32	64
34	260
36	64
38	48
88N 40E	62
TL 88N 40E	62
88N 42E	64
44	680
46	87
48	72
50	392
52	55
54	129
56	85
58	55
60	136
62	93
64	370
65	126
66	76
68	111
68+100-0-)	545
70	51
72	102
74	30
76	54
78	43
80	65
82	50
84	45
86	43
88	43
88N 90E	42
88N 2W	55
4	50
6	114
8	32
10-0	480
Std. #20	96

Certified by *A.D. Stoddart*



CHEMEX LABS LTD.

1416 CROWN STREET
NORTH VANCOUVER, B. C.
CANADA
TELEPHONE: 988-6955

• CHEMISTS • GEOCHEMISTS • ANALYSTS • ASSAYERS

CERTIFICATE OF ANALYSIS

NO. 6133

TO: Can-West Investments LTD.,
#1770 - 777 Hornby St.,
Vancouver, B. C.

INVOICE NO. 1909

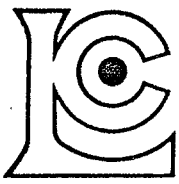
DATE RECEIVED Sept. 3/69

DATE ANALYSED Sept. 5/69

ATTN: Mr. Mike Stadnyk

SAMPLE NO.:	PPM	Copper
88N 12W	93	
13-0	665	
14	32	
16	30	
18	65	
88N 20W	40	
92N 2E	51	
4	70	
4+50E	655	
6	46	
8	54	
10	51	
12	55	
14	42	
16	69	
18	233	
20	40	
22	36	
24	93	
26	195	
28	220	
30	35	
32	55	
34	163	
36	225	
38	57	
40A	43	
40B	69	
42	117	
44	60	
46	72	
47	630	
48	168	
50	655	
51	510	
92N 52	51	
54E	91	
56	52	
58	69	
60	54	
92N 62	78	

Certified by *R. A. Stadnyk*



CHEMEX LABS LTD.

1416 CROWN STREET
NORTH VANCOUVER, B.C.
CANADA
TELEPHONE: 988-6955

- CHEMISTS
- GEOCHEMISTS
- ANALYSTS
- ASSAYERS

CERTIFICATE OF ANALYSIS

NO. 6134

TO: Can-West Investments Ltd.-
#1770 - 777 Hornby St.,
Vancouver, B. C.

INVOICE NO. 1909

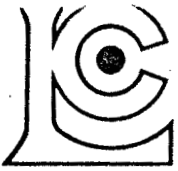
DATE RECEIVED Sept. 3/69

DATE ANALYSED Sept. 5/69

ATTN: Mr. Mike Stadnyk

SAMPLE NO.:	PPM
	Copper
92N 64E	59
66	50
68	315
92+70N 69+47E	98
92N 70E	54
72	82
74	36
75	370
76	51
78	107
80	38
82	33
84	72
86	93
88	122
92N 88+50E	206
92N 90E	33
92N 2W	33
4	28
6	45
8	33
10-0	710
12	50
14	109
16	55
18	55
20	42
T/L 96N 40E	1700
42	64
44	107
46	174
48	57
50	46
51+75	680
52	52
54	65
54+30	710
56	51
58	42
60	585
Std.	89

Certified by *R. H. Stadnyk*



CHEMEX LABS LTD.

1416 CROWN STREET
NORTH VANCOUVER, B. C.
CANADA
TELEPHONE: 988-6955

• CHEMISTS • GEOCHEMISTS • ANALYSTS • ASSAYERS

CERTIFICATE OF ANALYSIS

NO. 6135

TO: Can-West Investments Ltd.,
#1770 - 777 Hornby St.,
Vancouver, B. C.

INVOICE NO. 1909

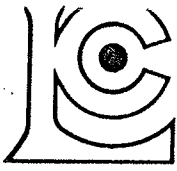
DATE RECEIVED Sept. 3/69

DATE ANALYSED Sept. 5/69

ATTN: Mr. Mike Stadnyk

SAMPLE NO.:		PPM Copper
96N	62E	124
	64	252
	66	51
	68	480
	70	48
	72	57
	74	233
	76	140
	78	70
96N	80	67
	82	57
	84	40
	86	42
	88	33
96N	90E	64
BL 104N		46
104N	175E	426
104N	2E	51
	4	32
	6	28
	8	91
	10	74
	12	87
	12+50	545
	14	33
	16	225
	18	59
	20	51
	22	32
	23	360
	24	45
	26	36
	28	72
	30	28
	32	80
	34	1300
	36	89
	38	48
104N	39E	3600
108NBL		252

Certified by *L. H. Stadnyk*



CHEMEX LABS LTD.

1416 CROWN STREET
NORTH VANCOUVER, B.C.
CANADA
TELEPHONE: 988-6955

- CHEMISTS
- GEOCHEMISTS
- ANALYSTS
- ASSAYERS

CERTIFICATE OF ANALYSIS

TO: Can-West Investments Ltd.,
#1770 - 777 Hornby St.,
Vancouver, B. C.

NO. 6136

INVOICE NO. 1909

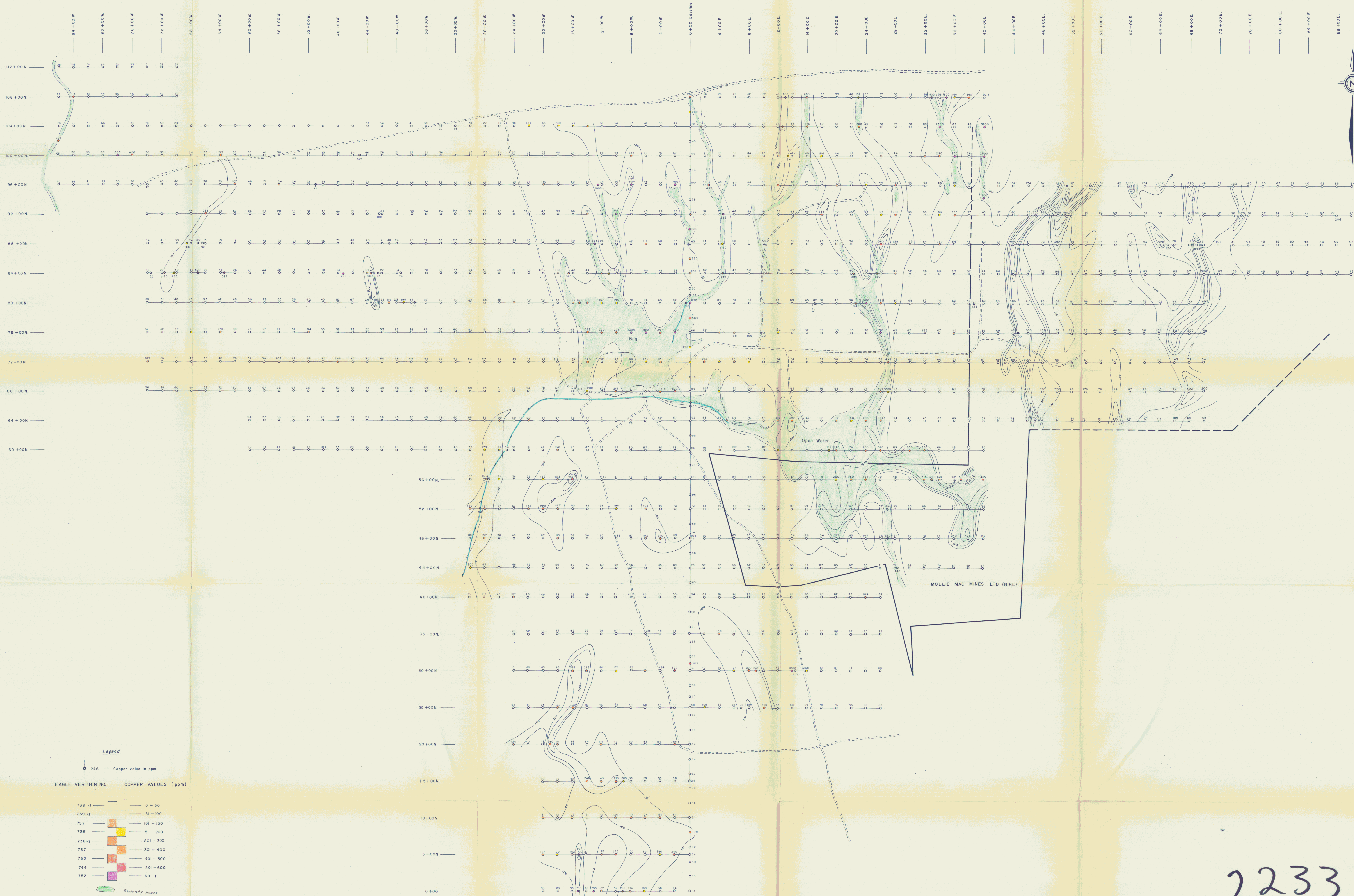
DATE RECEIVED Sept. 3/69

DATE ANALYSED Sept. 5/69

ATTN: Mr. M. Stadnyk

SAMPLE NO.:	PPM
	Copper
108N 2E	46
4	26
6	28
8	42
10	52
12	42
13	680
14	32
16	403
18	28
20	33
22	46
23	152
24	65
26	87
28	55
30	42
32	74
33+50'	900
34	36
35	800
36	160
108N 38E	260
BL 106N	200
106+70N 69+58E	50
BL 102	40

Certified by *A. H. Dillard*



Legend

- 246 — Copper value in ppm.
- EAGLE VERITHIN NO. COPPER VALUES (ppm)
- 738 1/2 — 0 - 50
- 739 1/2 — 51 - 100
- 757 — 101 - 150
- 735 — 151 - 200
- 736 1/2 — 201 - 300
- 737 — 301 - 400
- 750 — 401 - 500
- 744 — 501 - 600
- 752 — 601 +
- Swampy Areas
- Rocks
- Roads

MOLLIE MAC MINES LTD. (N.P.L.)

Department of
Mines and Petroleum Resources
ASSESSMENT REPORT
NO. 2233 MAP #3

To Accompany Geochronological report on the
Lorne, Mol, Zen, Mars, Pam, & Mac Groups
Highland Valley, B.C.
Kamloops Mining Division
M.P. Stodnyk, December, 1969.

2233

ZENITH MINING CORPORATION LTD. (N.P.L.)
PIMAINUS LAKE PROPERTY
HIGHLAND VALLEY, B.C.

NORTH HALF
#2 GRID

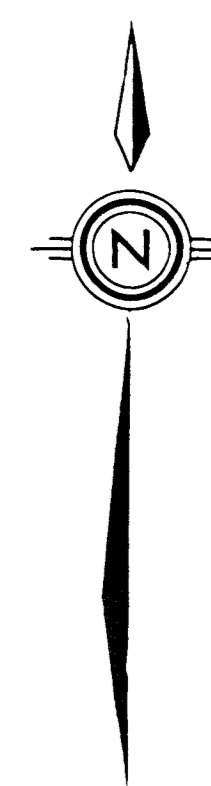
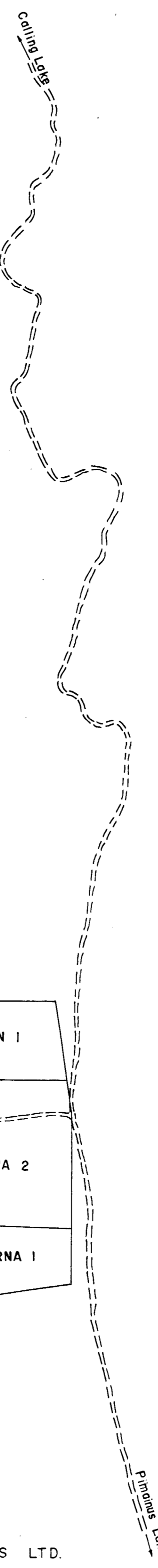
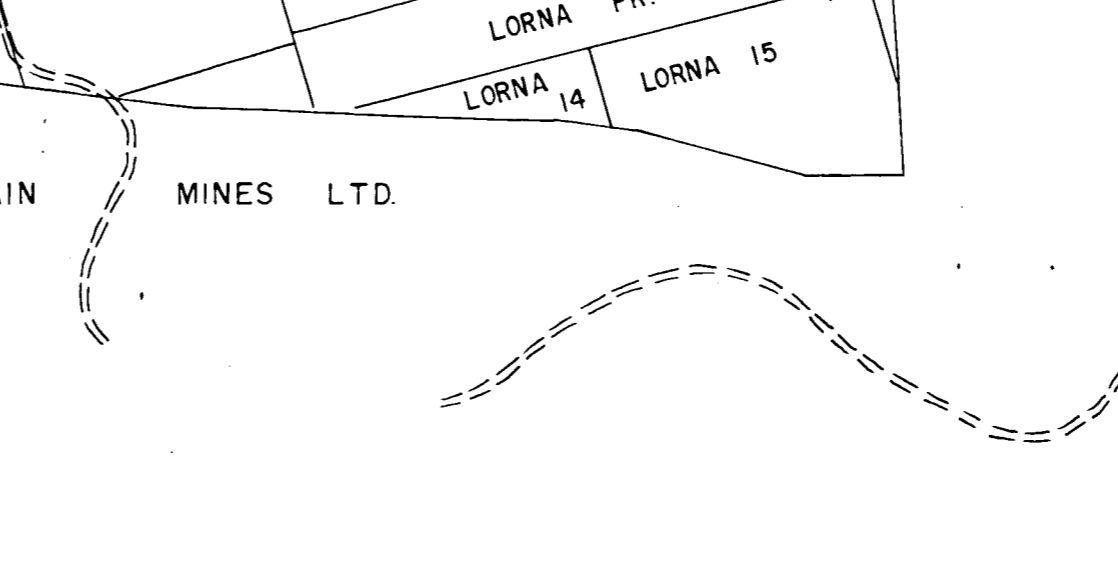
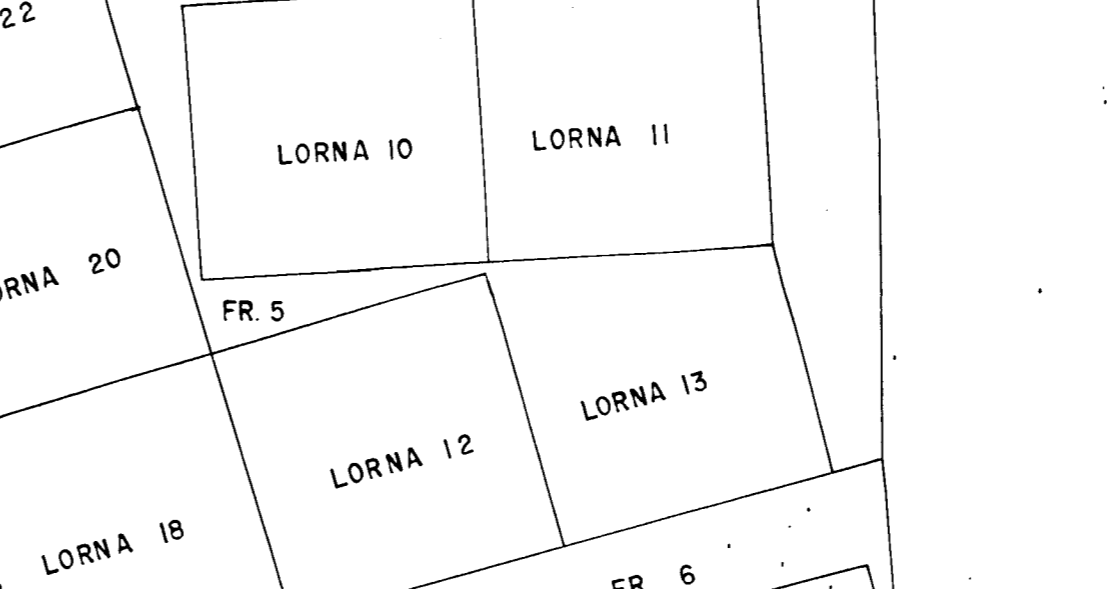
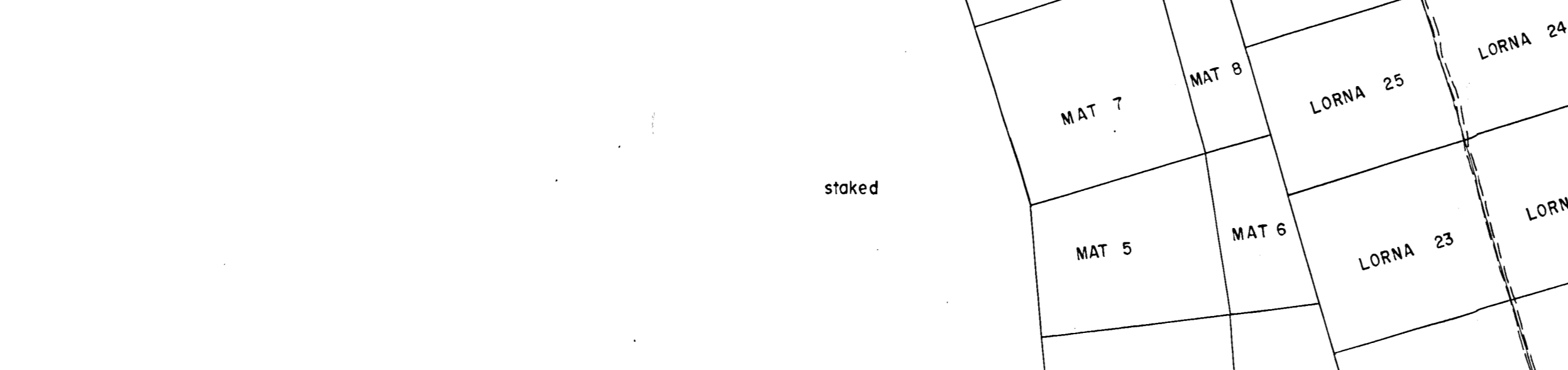
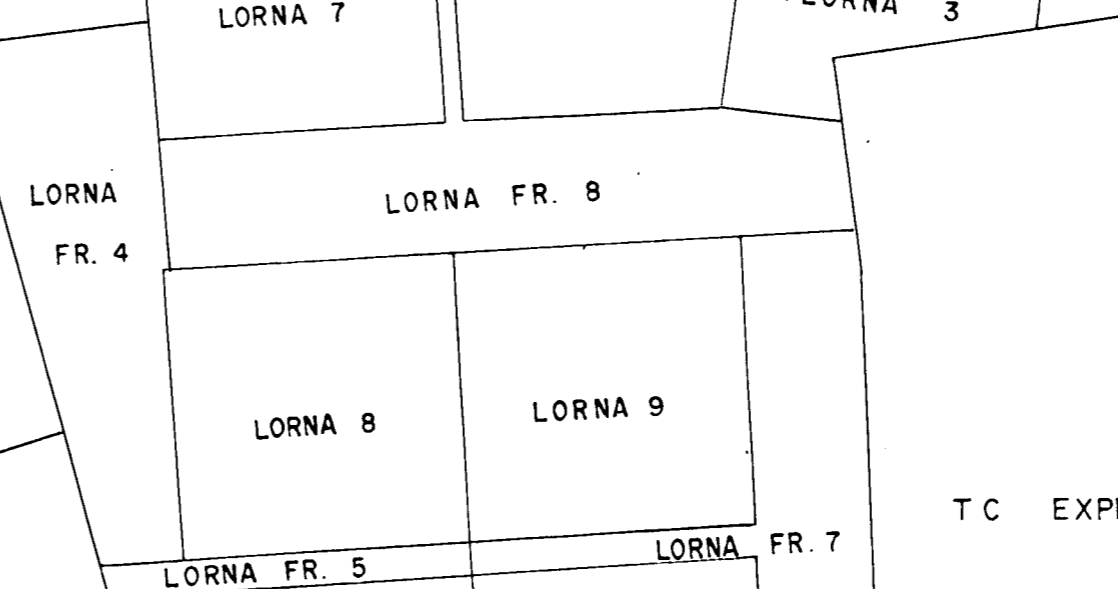
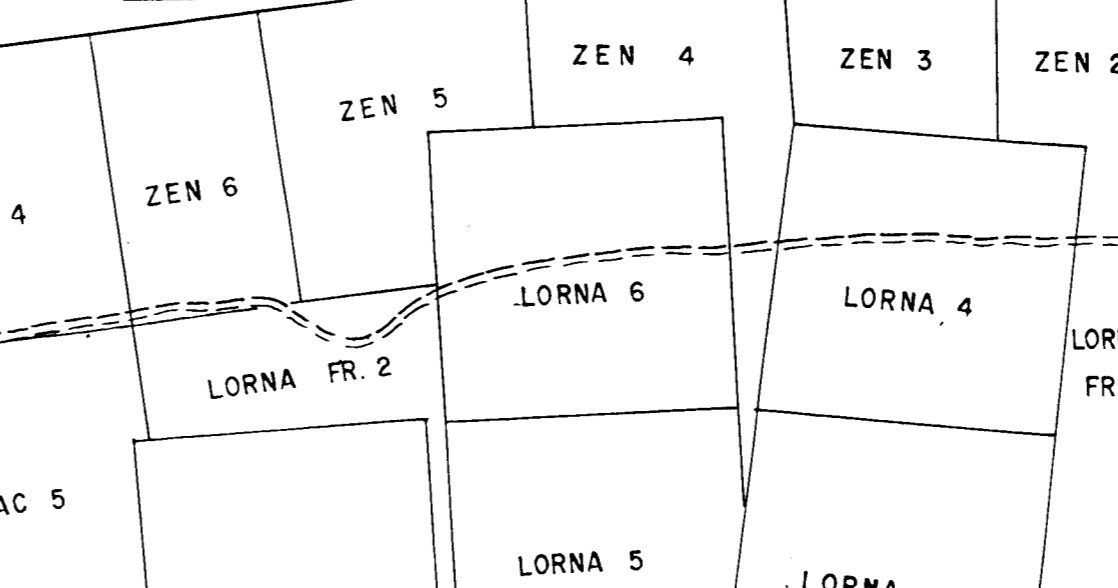
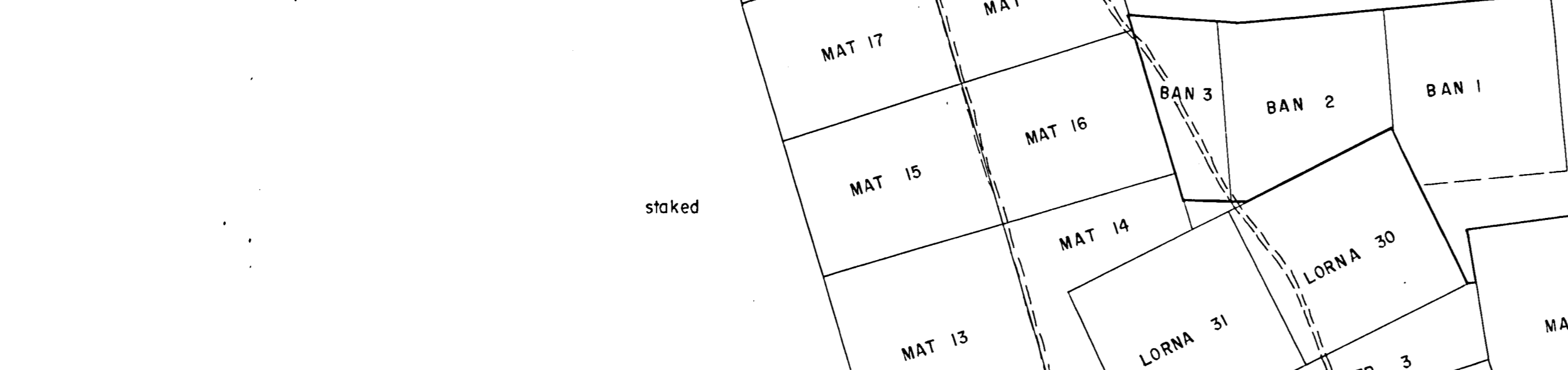
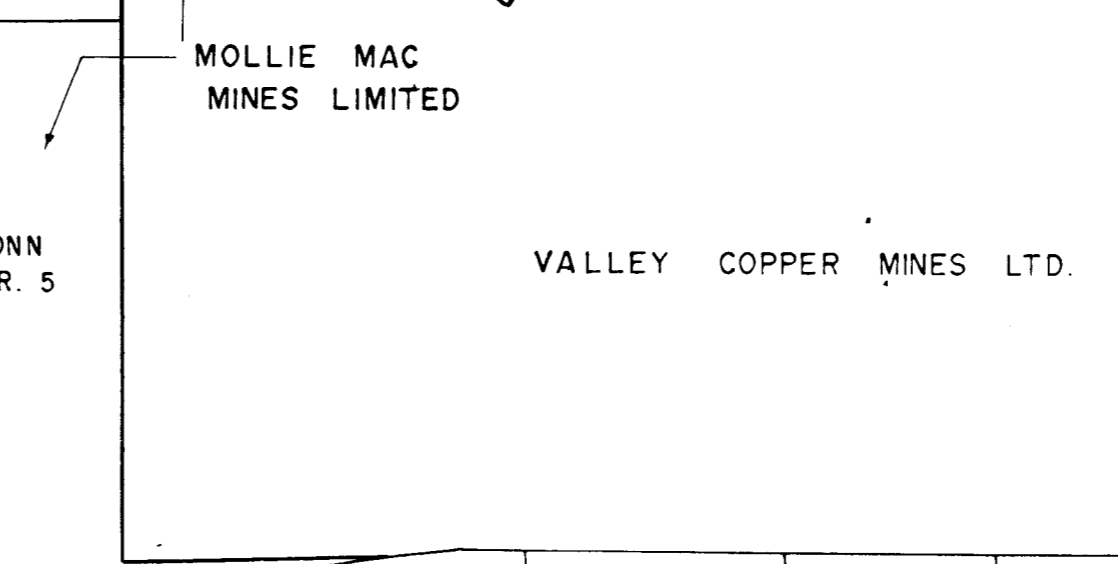
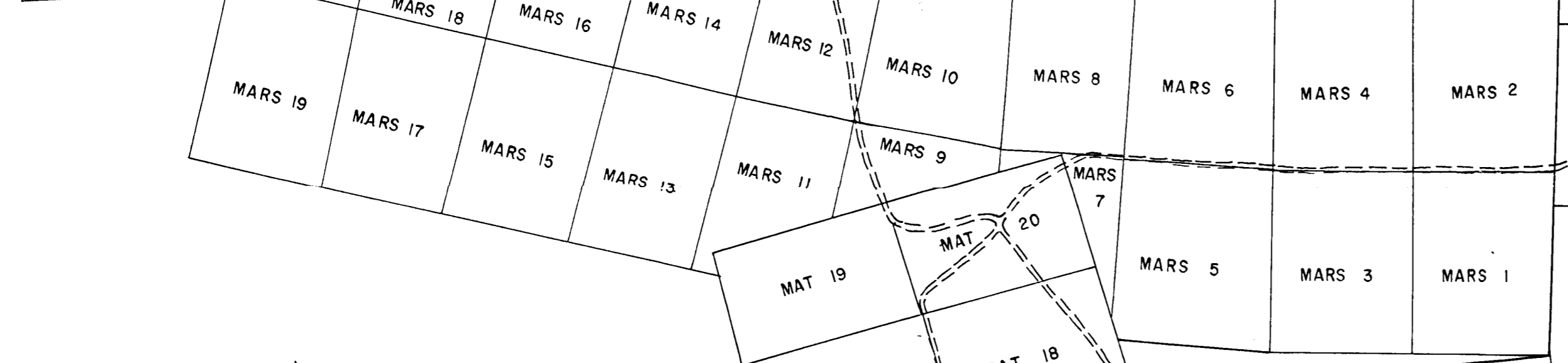
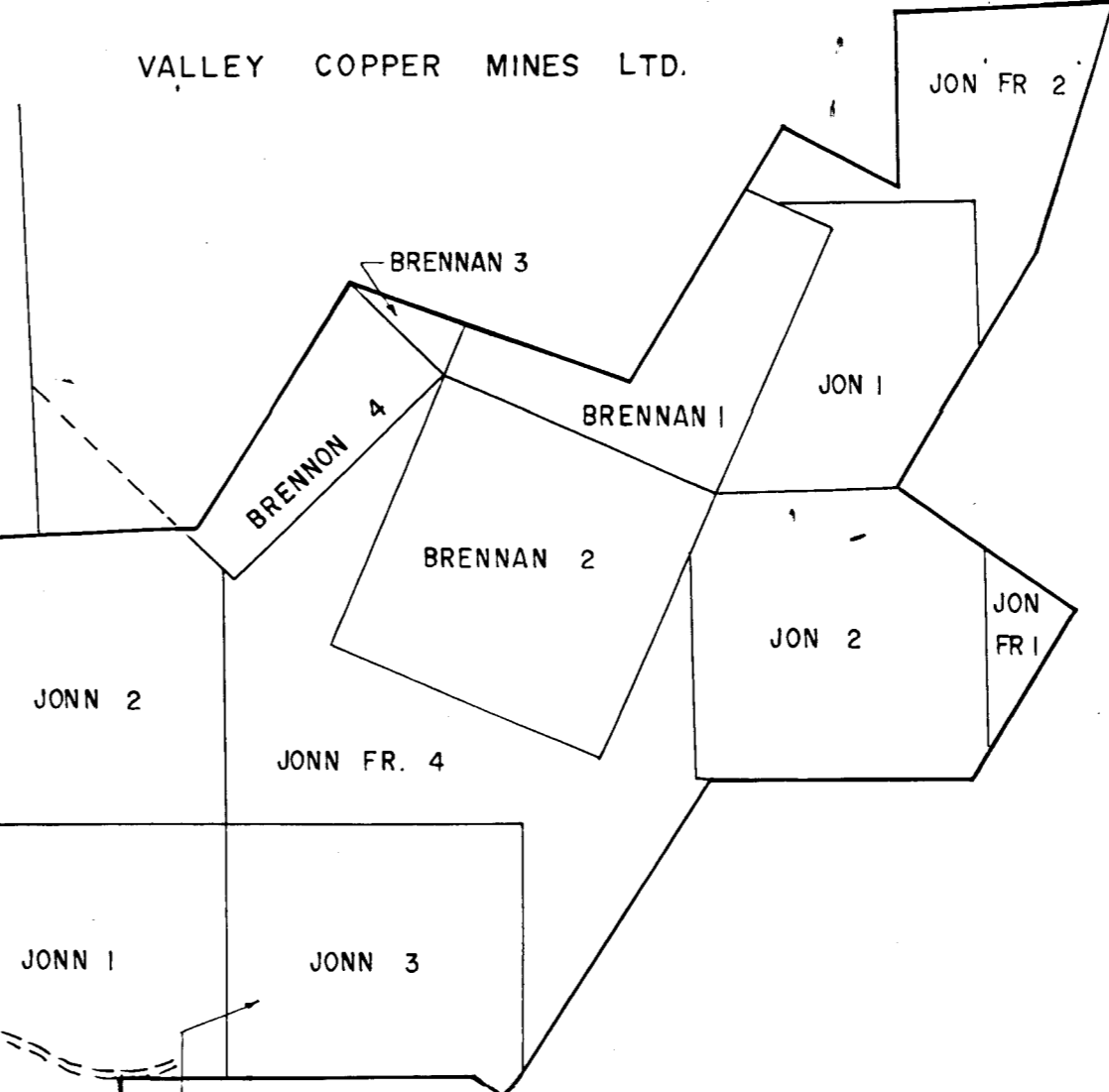
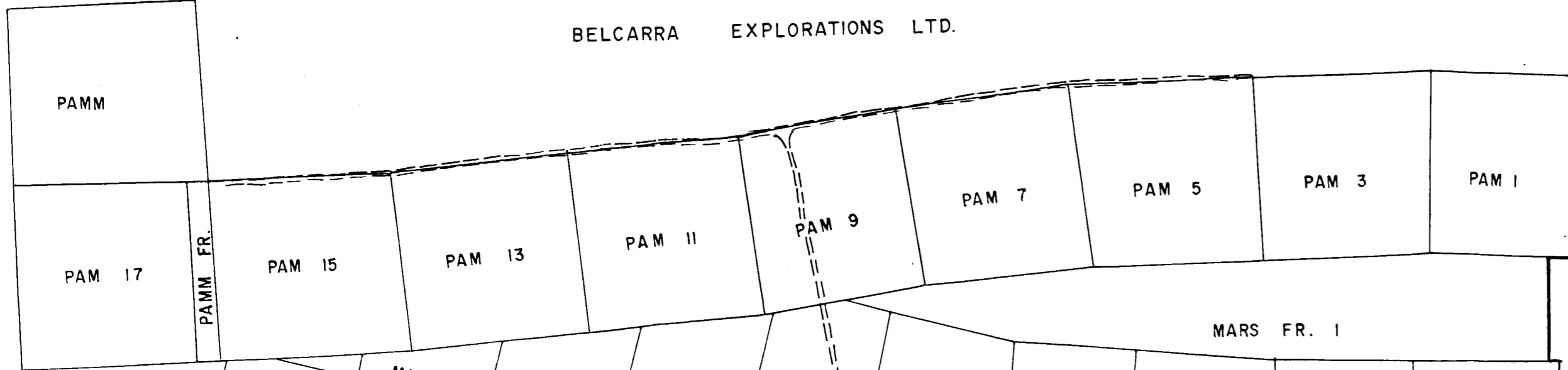
Geochemical Survey
COPPER DISPERSION PATTERN

DRAWN BY: L.M. SCALE: 1"=400'
CHECKED: M.P.S. DATE: November, 1969

NORTHLODE EXPLORATIONS LTD.

VALLEY COPPER MINES LTD.

BELCARRA EXPLORATIONS LTD.



Department of
Mines and Petroleum Resources
ASSESSMENT REPORT
NO. **2293** MAP #2

To Accompany Geochemical report on the
Lorna, Mar, Zen, Mars, Pam, & Mac Groups
Highland Valley, B.C.
Kamloops Mining Division
M.P. Study # December, 1969

W. J. Stodart
2233

ZENITH MINING CORPORATION LTD. (N.P.L.)

Mineral Claim Map

PIMAINUS LAKE - HIGHLAND VALLEY, B.C.

SCALE: 1" = 1000'

1000 500 0 1000 2000 3000

SCALE IN FEET

DRAWN BY: L.M. CHECKED BY: M.P.S. DECEMBER, 1969

HIGHLAND CHIEFTAIN MINES LTD.

T.C. EXPLORATIONS LTD.

VALLEY COPPER MINES LTD.

MOLLIE MAC MINES LIMITED

staked

staked

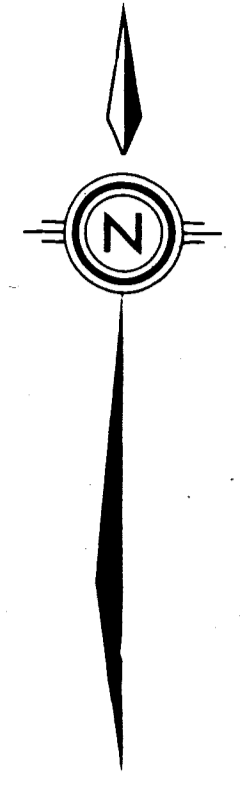
Pimainus Lake

NORTHLODE EXPLORATIONS LTD.

VALLEY COPPER MINES LTD.

BELCARRA EXPLORATIONS LTD.

JON FR 2



Department of
Mines and Petroleum Resources
ASSESSMENT REPORT
NO. **2233** MAP #1

TO ACCOMPANY GEOCHEMICAL REPORT ON THE
LORNA, MAT, ZEN, MARS, PAM AND MAC GROUPS,
HIGHLAND VALLEY, B.C.,
KAMLOOPS MINING DIVISION,
M.P. STADNYK, DECEMBER, 1969.

ZENITH MINING CORPORATION LTD. (N.P.L.)

Mineral Claim Map
AND
GRID LOCATION
PIMAINUS LAKE - HIGHLAND VALLEY, B.C.

SCALE : 1" = 1000'

SCALE IN FEET

DRAWN BY: L.M. CHECKED BY: M.P.S. DECEMBER, 1969