

CLAIMS: RADIO

WORK DONE FOR: DENISON MINES LIMITED

BY: P. PISANI

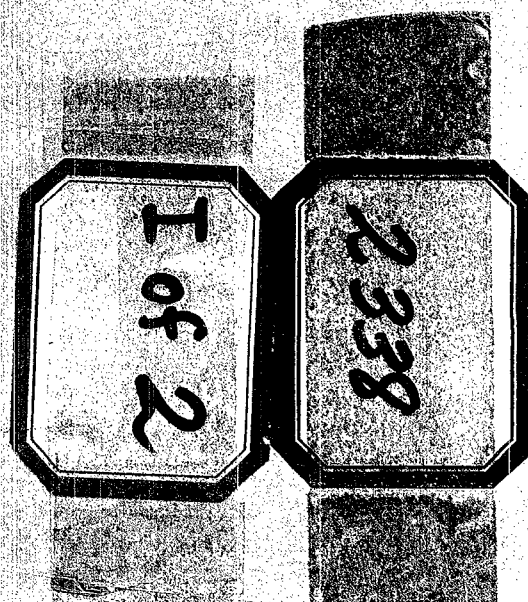
SIGNED: JANUARY, 1970 : WORK DONE: July 16-Sept. 20/69

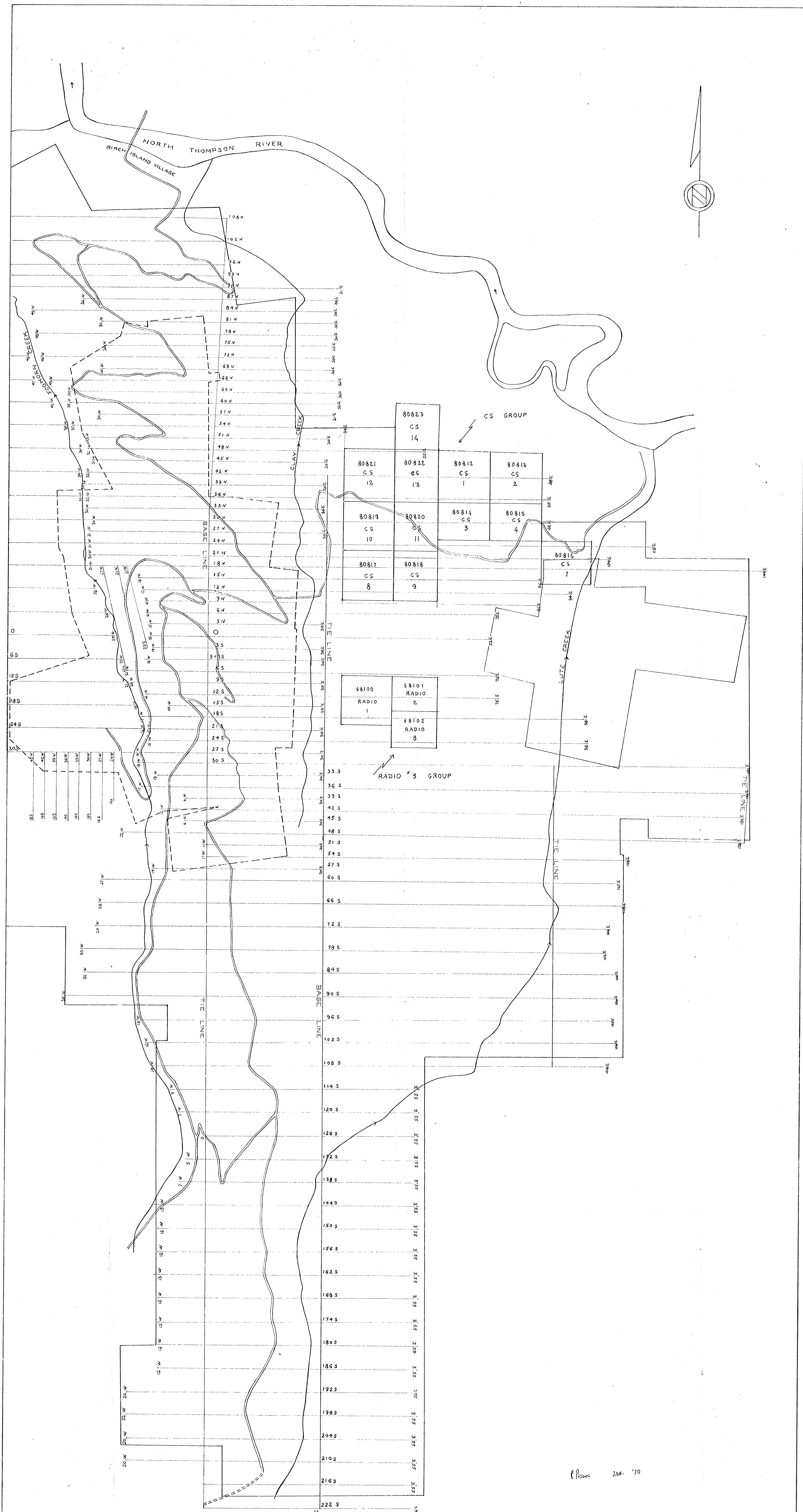
MINING DIVISION: KAMLOOPS

Map #1 - Line cutting
1" = 1000'

*Map #2 - Line cutting Map to accompany line
cutting through the area, showing
mine groups in various locations.*

82M12W





——— PROPERTY BOUNDARY
 - - - CROWN GRANT

DENISON MINES LIMITED REXSPAR PROJECT
 MAP SHOWING
 LINE CUTTING
 DRAWN BY — JK SCALE — 1" = 1000' PLATE — EAST PORTION DATE — DEC. 1969

2338

Department of
 Mines and Petroleum Resources
 ASSESSMENT REPORT
 NO. 2338 MAP #1