

LINE CUTTING REPORT

CLAIMS: RAY

DONE FOR: DENISON MINES LTD.

OWNED BY: CONSOLIDATED REXSPAR MINERALS & CHEMICALS LTD.

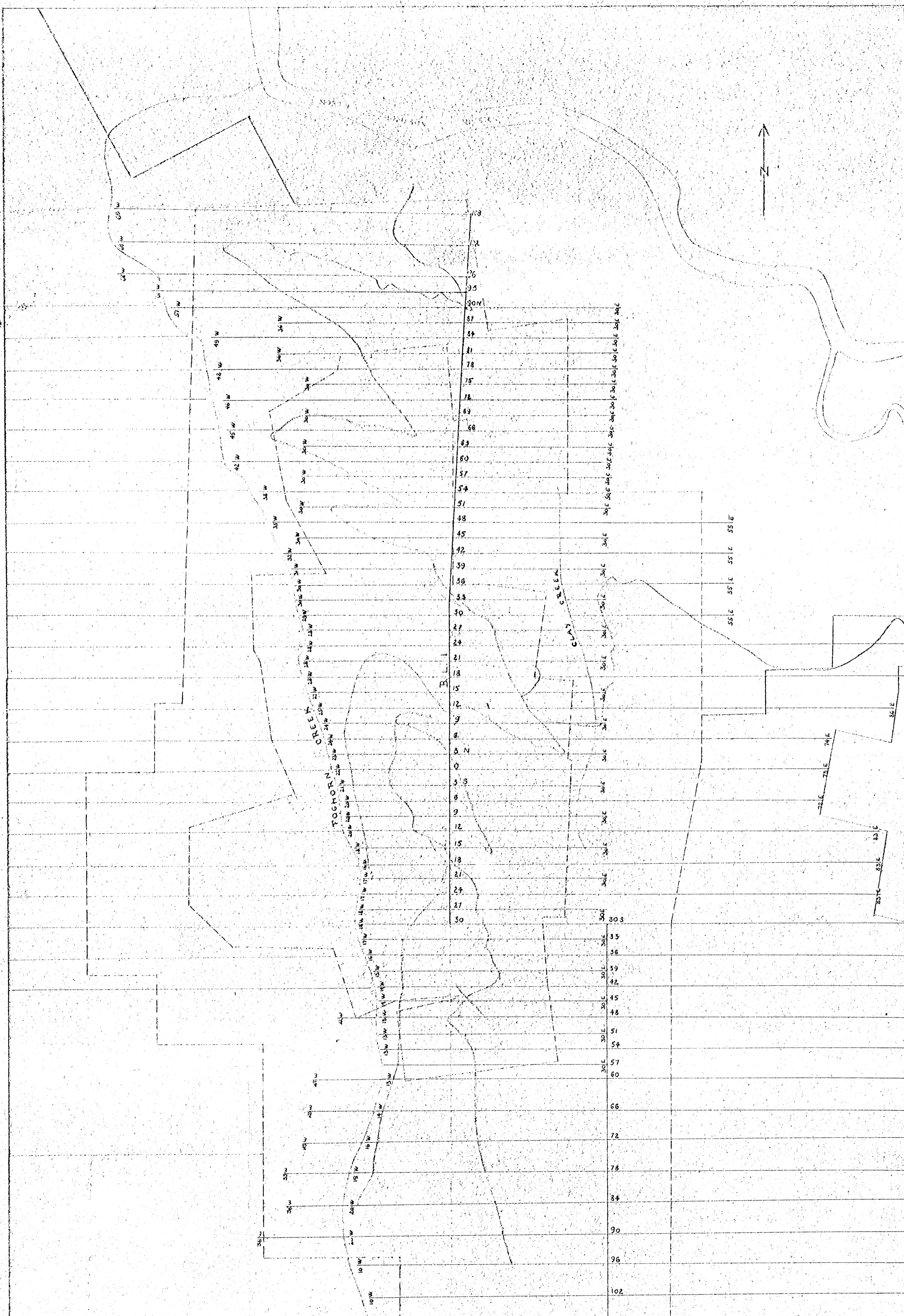
BY:

MINING DIVISION: KAMLOOPS

WORK DONE: JULY 16-SEPT. 20/69

*Map #1 - Central Portion*





DENISON MINES LIMITED  
 LINE CUTTING - ROAD BUILDING  
 ON PROPERTIES OF  
 CONSOLIDATED REXPAR MINERALS & CHEMICALS LTD.  
 CANADIAN NEPHELINE CORPORATION LTD.  
 RAY\*1 and RAY\*2 GROUPS  
 KAMLOOPS MINING DIVISION, B.C.  
 DECEMBER 1969

67399 RAY	67399 RAY	67362 R RAY	67363 RAY	67380 RAY	67381 R RAY
38	38	1	2	19	20
67400 RAY	67400 RAY	67364 R RAY	67365 RAY	67382 RAY	67383 R RAY
40	40	3	4	21	22
67402 RAY	67402 RAY	67366 R RAY	67367 RAY	67384 RAY	67385 R RAY
42	42	5	6	23	24
67404 RAY	67404 RAY	67368 R RAY	67369 RAY	67386 RAY	67387 R RAY
44	44	7	8	25	26
67406 RAY	67406 RAY	67370 R RAY	67371 R RAY	67388 R RAY	67389 R RAY
46	46	9	10	27	28
67408 RAY	67408 RAY	67372 R RAY	67373 R RAY	67390 R RAY	67391 R RAY
48	48	11	12	29	30
67410 RAY	67411 RAY	67374 R RAY	67375 R RAY	67392 R RAY	67393 R RAY
49	50	13	14	31	32
67412 RAY	67413 RAY	67376 R RAY	67377 R RAY	67394 R RAY	67395 R RAY
51	52	15	16	33	34
		67378 R RAY	67379 R RAY	67396 R RAY	67397 R RAY
		17	18	35	36

RAY 2 GROUP

RAY 1 GROUP

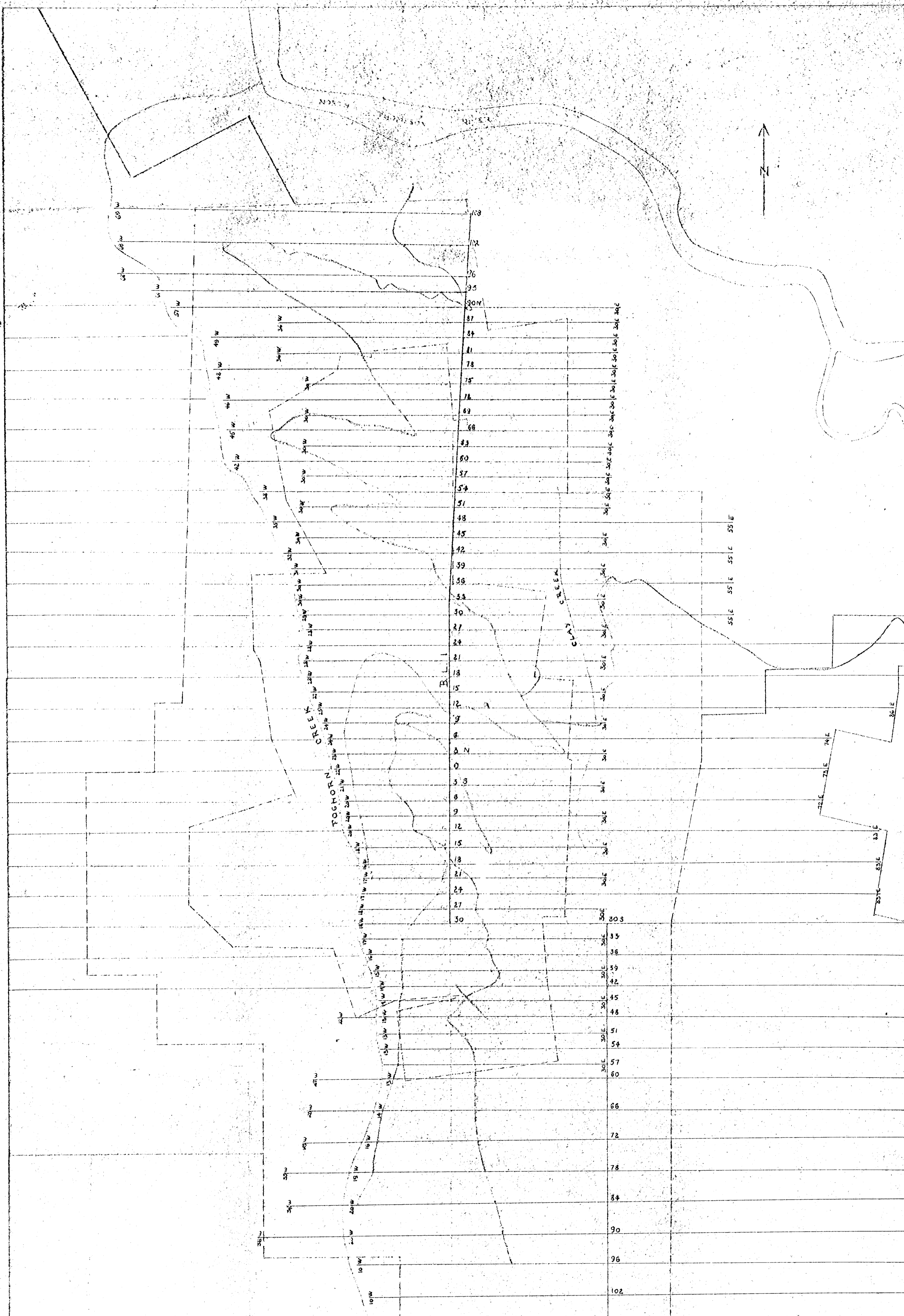
2339

LEGEND  
 --- CROWN GRANT  
 --- RED AREA  
 --- PROPERTY BOUNDARY

Department of  
 Mines and Petroleum Resources  
 ASSESSMENT REPORT  
 NO. 2339 MAP #1

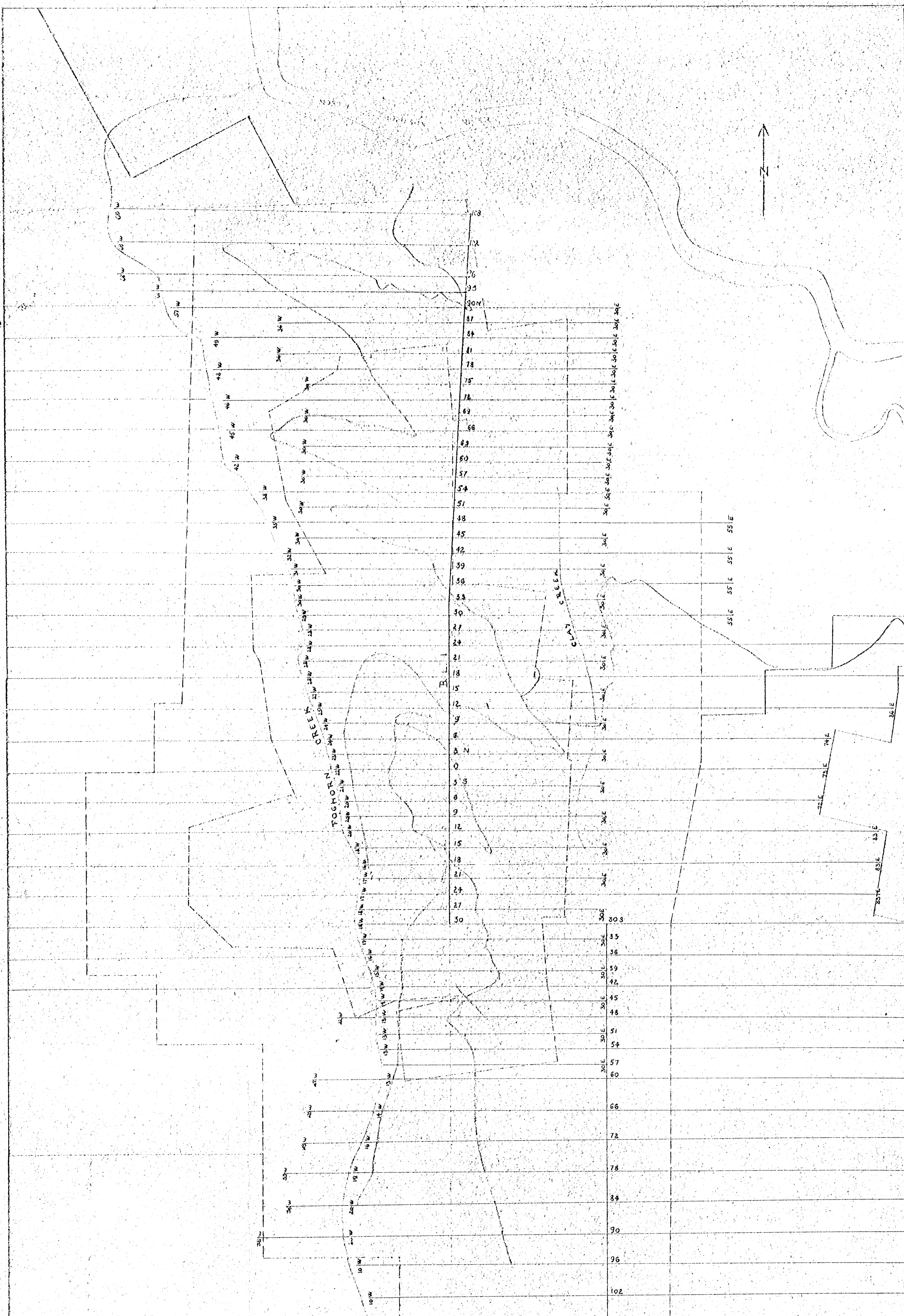
DENISON MINES LTD.  
 REXPAR PROJECT  
 CENTRAL PORTION

Scale: 1" = 1000'



DENISON MINES LIMITED  
 LINE CUTTING - ROAD BUILDING  
 ON PROPERTIES OF  
 CONSOLIDATED REXPAR MINERALS & CHEMICALS LTD.  
 CANADIAN NEPHELINE CORPORATION LTD.  
 RAY #1 and RAY #2 GROUPS  
 KAMLOOPS MINING DIVISION, B.C.  
 DECEMBER 1969

67399 RAY	67362 R	67363	67380	67381 R
38	RAY 1	RAY 2	RAY 19	RAY 20
67400 - 39	67401 R	67364 R	67365	67382
40	RAY 4	RAY 3	RAY 4	RAY 21
67402 - 41	67403 R	67366 R	67367	67384
42	RAY	RAY	RAY	RAY 22
67404 - 43	67405 R	67368 R	67369	67386
44	RAY	RAY	RAY	RAY 23
67406 - 45	67407 R	67370 R	67371 R	67388 R
46	RAY	RAY	RAY	RAY 24
67408 - 47	67409 R	67372 R	67373 R	67390 R
48	RAY	RAY	RAY	RAY 25
67410 R	67411 R	67374 R	67375 R	67392 R
49	RAY	RAY	RAY	RAY 26
67412 R	67413 R	67376 R	67377 R	67394 R
50	RAY	RAY	RAY	RAY 27
67414 R	67415 R	67378 R	67379 R	67396 R
51	RAY	RAY	RAY	RAY 28
67416 R	67417 R	67380 R	67381 R	67398 R
52	RAY	RAY	RAY	RAY 29
67418 R	67419 R	67382 R	67383 R	67400 R
53	RAY	RAY	RAY	RAY 30
67420 R	67421 R	67384 R	67385 R	67402 R
54	RAY	RAY	RAY	RAY 31
67422 R	67423 R	67386 R	67387 R	67404 R
55	RAY	RAY	RAY	RAY 32
67424 R	67425 R	67388 R	67389 R	67406 R
56	RAY	RAY	RAY	RAY 33
67426 R	67427 R	67390 R	67391 R	67408 R
57	RAY	RAY	RAY	RAY 34
67428 R	67429 R	67392 R	67393 R	67410 R
58	RAY	RAY	RAY	RAY 35
67430 R	67431 R	67394 R	67395 R	67412 R
59	RAY	RAY	RAY	RAY 36
67432 R	67433 R	67396 R	67397 R	67414 R
60	RAY	RAY	RAY	RAY 37
67434 R	67435 R	67398 R	67399 R	67416 R
61	RAY	RAY	RAY	RAY 38
67436 R	67437 R	67400 R	67401 R	67418 R
62	RAY	RAY	RAY	RAY 39
67438 R	67439 R	67402 R	67403 R	67420 R
63	RAY	RAY	RAY	RAY 40
67440 R	67441 R	67404 R	67405 R	67422 R
64	RAY	RAY	RAY	RAY 41
67442 R	67443 R	67406 R	67407 R	67424 R
65	RAY	RAY	RAY	RAY 42
67444 R	67445 R	67408 R	67409 R	67426 R
66	RAY	RAY	RAY	RAY 43
67446 R	67447 R	67410 R	67411 R	67428 R
67	RAY	RAY	RAY	RAY 44
67448 R	67449 R	67412 R	67413 R	67430 R
68	RAY	RAY	RAY	RAY 45
67450 R	67451 R	67414 R	67415 R	67432 R
69	RAY	RAY	RAY	RAY 46
67452 R	67453 R	67416 R	67417 R	67434 R
70	RAY	RAY	RAY	RAY 47
67454 R	67455 R	67418 R	67419 R	67436 R
71	RAY	RAY	RAY	RAY 48
67456 R	67457 R	67420 R	67421 R	67438 R
72	RAY	RAY	RAY	RAY 49
67458 R	67459 R	67422 R	67423 R	67440 R
73	RAY	RAY	RAY	RAY 50
67460 R	67461 R	67424 R	67425 R	67442 R
74	RAY	RAY	RAY	RAY 51
67462 R	67463 R	67426 R	67427 R	67444 R
75	RAY	RAY	RAY	RAY 52
67464 R	67465 R	67428 R	67429 R	67446 R
76	RAY	RAY	RAY	RAY 53
67466 R	67467 R	67430 R	67431 R	67448 R
77	RAY	RAY	RAY	RAY 54
67468 R	67469 R	67432 R	67433 R	67450 R
78	RAY	RAY	RAY	RAY 55
67470 R	67471 R	67434 R	67435 R	67452 R
79	RAY	RAY	RAY	RAY 56
67472 R	67473 R	67436 R	67437 R	67454 R
80	RAY	RAY	RAY	RAY 57
67474 R	67475 R	67438 R	67439 R	67456 R
81	RAY	RAY	RAY	RAY 58
67476 R	67477 R	67440 R	67441 R	67458 R
82	RAY	RAY	RAY	RAY 59
67478 R	67479 R	67442 R	67443 R	67460 R
83	RAY	RAY	RAY	RAY 60
67480 R	67481 R	67444 R	67445 R	67462 R
84	RAY	RAY	RAY	RAY 61
67482 R	67483 R	67446 R	67447 R	67464 R
85	RAY	RAY	RAY	RAY 62
67484 R	67485 R	67448 R	67449 R	67466 R
86	RAY	RAY	RAY	RAY 63
67486 R	67487 R	67450 R	67451 R	67468 R
87	RAY	RAY	RAY	RAY 64
67488 R	67489 R	67452 R	67453 R	67470 R
88	RAY	RAY	RAY	RAY 65
67490 R	67491 R	67454 R	67455 R	67472 R
89	RAY	RAY	RAY	RAY 66
67492 R	67493 R	67456 R	67457 R	67474 R
90	RAY	RAY	RAY	RAY 67
67494 R	67495 R	67458 R	67459 R	67476 R
91	RAY	RAY	RAY	RAY 68
67496 R	67497 R	67460 R	67461 R	67478 R
92	RAY	RAY	RAY	RAY 69
67498 R	67499 R	67462 R	67463 R	67480 R
93	RAY	RAY	RAY	RAY 70
67500 R	67501 R	67464 R	67465 R	67482 R
94	RAY	RAY	RAY	RAY 71
67502 R	67503 R	67466 R	67467 R	67484 R
95	RAY	RAY	RAY	RAY 72
67504 R	67505 R	67468 R	67469 R	67486 R
96	RAY	RAY	RAY	RAY 73
67506 R	67507 R	67470 R	67471 R	67488 R
97	RAY	RAY	RAY	RAY 74
67508 R	67509 R	67472 R	67473 R	67490 R
98	RAY	RAY	RAY	RAY 75
67510 R	67511 R	67474 R	67475 R	67492 R
99	RAY	RAY	RAY	RAY 76
67512 R	67513 R	67476 R	67477 R	67494 R
100	RAY	RAY	RAY	RAY 77
67514 R	67515 R	67478 R	67479 R	67496 R
101	RAY	RAY	RAY	RAY 78
67516 R	67517 R	67480 R	67481 R	67498 R
102	RAY	RAY	RAY	RAY 79
67518 R	67519 R	67482 R	67483 R	67500 R
103	RAY	RAY	RAY	RAY 80
67520 R	67521 R	67484 R	67485 R	67502 R
104	RAY	RAY	RAY	RAY 81
67522 R	67523 R	67486 R	67487 R	67504 R
105	RAY	RAY	RAY	RAY 82
67524 R	67525 R	67488 R	67489 R	67506 R
106	RAY	RAY	RAY	RAY 83
67526 R	67527 R	67490 R	67491 R	67508 R
107	RAY	RAY	RAY	RAY 84
67528 R	67529 R	67492 R	67493 R	67510 R
108	RAY	RAY	RAY	RAY 85
67530 R	67531 R	67494 R	67495 R	67512 R
109	RAY	RAY	RAY	RAY 86
67532 R	67533 R	67496 R	67497 R	67514 R
110	RAY	RAY	RAY	RAY 87
67534 R	67535 R	67498 R	67499 R	67516 R
111	RAY	RAY	RAY	RAY 88
67536 R	67537 R	67500 R	67501 R	67518 R
112	RAY	RAY	RAY	RAY 89
67538 R	67539 R	67502 R	67503 R	67520 R
113	RAY	RAY	RAY	RAY 90
67540 R	67541 R	67504 R	67505 R	67522 R
114	RAY	RAY	RAY	RAY 91
67542 R	67543 R	67506 R	67507 R	67524 R
115	RAY	RAY	RAY	RAY 92
67544 R	67545 R	67508 R	67509 R	67526 R
116	RAY	RAY	RAY	RAY 93
67546 R	67547 R	67510 R	67511 R	67528 R
117	RAY	RAY	RAY	RAY 94
67548 R	67549 R	67512 R	67513 R	67530 R
118	RAY	RAY	RAY	RAY 95
67550 R	67551 R	67514 R	67515 R	67532 R
119	RAY	RAY	RAY	RAY 96
67552 R	67553 R	67516 R	67517 R	67534 R
120	RAY	RAY	RAY	RAY 97
67554 R	67555 R	67518 R	67519 R	67536 R
121	RAY	RAY	RAY	RAY 98
67556 R	67557 R	67520 R	67521 R	67538 R
122	RAY	RAY	RAY	RAY 99
67558 R	67559 R	67522 R	67523 R	67540 R
123	RAY	RAY	RAY	RAY 100
67560 R	67561 R	67524 R	67525 R	67542 R
124	RAY	RAY	RAY	RAY 101
67562 R	67563 R	67526 R	67527 R	67544 R
125	RAY	RAY	RAY	RAY 102
67564 R	67565 R	67528 R	67529 R	67546 R
126	RAY	RAY	RAY	RAY 103
67566 R	67567 R	67530 R	67531 R	67548 R
127	RAY	RAY	RAY	RAY 104
67568 R	67569 R	67532 R	67533 R	67550 R
128	RAY	RAY	RAY	RAY 105
67570 R	67571 R	67534 R	67535 R	67552 R
129	RAY	RAY	RAY	RAY 106
67572 R	67573 R	67536 R	67537 R	67554 R
130	RAY	RAY	RAY	RAY 107
67574 R	67575 R	67538 R	67539 R	67556 R
131	RAY	RAY	RAY	RAY 108
67576 R	67577 R	67540 R	67541 R	67558 R
132	RAY	RAY	RAY	RAY 109
67578 R	67579 R	67542 R	67543 R	67560 R
133	RAY	RAY	RAY	RAY 110
67580 R	67581 R	67544 R	67545 R	67562 R
134	RAY	RAY	RAY	RAY 111
67582 R	67583 R	67546 R	67547 R	67564 R
135	RAY	RAY	RAY	RAY 112
67584 R	67585 R	67548 R	67549 R	67566 R
136	RAY	RAY	RAY	RAY 113
67586 R	67587 R	67550 R	67551 R	67568 R
137	RAY	RAY	RAY	RAY 114
67588 R	67589 R	67552 R	67553 R	67570 R
138	RAY	RAY	RAY	RAY 115
67590 R	67591 R	67554 R	67555 R	67572 R
139	RAY	RAY	RAY	RAY 116
67592 R	67593 R	67556 R	67557 R	67574 R
140	RAY	RAY	RAY	RAY 117
67594 R	67595 R	67558 R	67559 R	67576 R
141	RAY	RAY	RAY	RAY 118
67596 R	67597 R	67560 R	67561 R	67578 R
142	RAY	RAY	RAY	RAY 119
67598 R	67599 R	67562 R	67563 R	67580 R
143	RAY	RAY	RAY	RAY 120
67600 R	67601 R	67564 R	67565 R	67582 R
144	RAY	RAY	RAY	RAY 121
67602 R	67603 R	67566 R	67567 R	67584 R
145	RAY	RAY	RAY	RAY 122
67604 R	67605 R	67568 R	67569 R	67586 R
146	RAY	RAY	RAY	RAY 123
67606 R	67607 R	67570 R	67571 R	67588 R
147	RAY	RAY	RAY	RAY 124
67608 R	67609 R	67572 R	67573 R	67590 R



DENISON MINES LIMITED  
 LINE CUTTING - ROAD BUILDING  
 ON PROPERTIES OF  
 CONSOLIDATED REXPAR MINERALS & CHEMICALS LTD.  
 CANADIAN NEPHELINE CORPORATION LTD.  
 RAY#1 and RAY#2 GROUPS  
 KAMLOOPS MINING DIVISION, B.C.  
 DECEMBER 1969

67399 RAY	67399 RAY	67362 R RAY	67363 RAY	67380 RAY	67381 R RAY
38	38	1	2	19	20
67400 RAY	67400 RAY	67364 R RAY	67365 RAY	67382 RAY	67383 R RAY
40	40	3	4	21	22
67402 RAY	67402 RAY	67366 R RAY	67367 RAY	67384 RAY	67385 R RAY
42	42	5	6	23	24
67404 RAY	67404 RAY	67368 R RAY	67369 RAY	67386 RAY	67387 R RAY
44	44	7	8	25	26
67406 RAY	67406 RAY	67370 R RAY	67371 R RAY	67388 R RAY	67389 R RAY
46	46	9	10	27	28
67408 RAY	67408 RAY	67372 R RAY	67373 R RAY	67390 R RAY	67391 R RAY
48	48	11	12	29	30
67410 RAY	67411 RAY	67374 R RAY	67375 R RAY	67392 R RAY	67393 R RAY
49	50	13	14	31	32
67412 RAY	67413 RAY	67376 R RAY	67377 R RAY	67394 R RAY	67395 R RAY
51	52	15	16	33	34
		67378 R RAY	67379 R RAY	67396 R RAY	67397 R RAY
		17	18	35	36

RAY 2 GROUP

RAY 1 GROUP

2339

LEGEND  
 --- CROWN GRANT  
 --- RED AREA  
 --- PROPERTY BOUNDARY

Department of  
 Mines and Petroleum Resources  
 ASSESSMENT REPORT  
 NO. 2339 MAP #1

DENISON MINES LTD.  
 REXPAR PROJECT  
 CENTRAL PORTION

Scale: 1" = 1000'