

CANEX AERIAL EXPLORATION LTD.

DIVISION OF CANADIAN EXPLORATION LIMITED

700 BARRARD BUILDING

VANCOUVER 5, B. C. CANADA

2366

GEOCHEMICAL REPORT

GEOCHEMICAL SOIL SURVEY

QUESNEL LAKE AREA: 52°45', 120°45'

CLAIMS L.R. 1 - 20

R. W. CANNON, B.A.Sc., P.Eng.

AUGUST & SEPTEMBER 1969

**Vancouver, B.C.
March 19, 1970**

CANEX AERIAL EXPLORATION LTD.

DIVISION OF CANADIAN EXPLORATION LIMITED

700 BARRARD BUILDING

VANCOUVER 5, B. C. CANADA

March 19, 1970

File: PROJ. 1970

GEOCHEMICAL SURVEY COSTS

DAYS WORKED

August & September, 1969
 L. Kiss 7 days
 J. Forster 7 days

Total man days 14

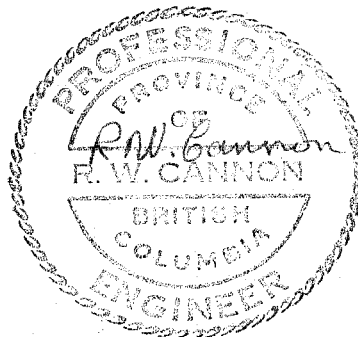
Board costs @ \$8/day/man x 14 =	\$ 112.00
Compensation, Administration & Supervision @ \$5/day/man x 14 =	70.00
Labour costs: L. Kiss 7/21 x \$750/month =	250.00
J. Forster 7/21 x \$750/month =	250.00
Helicopter Cost (moving men and camp) 4 hr. 10 min. @ \$150/hr. =	625.00
	\$ 1,307.00

SAMPLE ASSAYING	Price/sample	Samples	
Ag	\$1.00 x	302	302.00
Cu	\$0.50 x	300	150.00
Zn	\$0.50 x	299	149.50
Pb	\$0.50 x	301	150.50
Co	\$0.50 x	166	83.00
Mo	\$1.00 x	133	133.00
			968.00

SAMPLE PREPARATION	\$0.20 x 302	60.40
		1,028.40

CONTINGENCIES, 10%		102.84
		1,131.24

TOTAL COST OF SURVEY		\$ 2,438.24
----------------------	--	-------------



R. W. Cannon, P. Eng.
 R. W. Cannon, P. Eng.

TABLE OF CONTENTS

	<u>PAGE</u>
INTRODUCTION	1
LOCATION AND ACCESS	1
PROPERTY	1
PREVIOUS WORK	1
PRESENTATION OF RESULTS	1
SAMPLING METHOD	2
ASSAY METHOD	2
RESULTS AND CONCLUSIONS	2

APPENDIX

#1 <u>INDEX MAP - L.R. CLAIMS</u>	<i>In Folder</i>
#2 GEOCHEM MAP OF Co RESULTS	In Folder
#3 GEOCHEM MAP OF Cu RESULTS	In Folder
#4 GEOCHEM MAP OF Mo RESULTS	In Folder
#5 GEOCHEM MAP OF Pb RESULTS	In Folder
#6 GEOCHEM MAP OF Zn RESULTS	In Folder
#7 GEOCHEM MAP OF Ag RESULTS	In Folder
#8 BASE MAP OF GRID LINES AND CLAIM BOUNDARIES	In Folder

Department of
Mines and Petroleum Resources
ASSESSMENT REPORT

No. **2366** MAP

GEOCHEMICAL SOIL SURVEY
L. R. CLAIMS, NORTH ARM
OF QUESNEL LAKE 93A/15W
52°45', 120°45'

INTRODUCTION

A limited soil sampling survey was carried out on the L.R. claims during the month of August, ^{and September R.N.B.} 1969. This survey covered 6.04 miles of line. Samples were taken at 100-foot intervals along lines 400' apart.

LOCATION AND ACCESS

The property is located approximately one mile NNW of the North Arm of Quesnel Lake. The only access to the property is by way of helicopter from Williams Lake.

PROPERTY

The property consists of 20 claims recorded as follows:

	<u>Record No.</u>	<u>Tag No.</u>	<u>Expiry Date</u>	<u>Mining Div.</u>
L.R. 1 - 18	50356-50373	66173-66190	Apr.14/70	Cariboo
L.R. 19- 20	53828-53829	860641-860642	Sept.17/70	Cariboo

PREVIOUS WORK

No previous work was carried out on the property.

PRESENTATION OF RESULTS

The results were plotted as shown on the accompanying maps (scale 1"=500'). All of the samples were assayed for Ag, Cu, Zn, and Pb while selected samples were assayed for Co and Mo.

A map showing the relationship of the geochemical soil lines and the claim boundaries is included in the folder at the back of the report.

. . . /2

SAMPLING METHOD

Samples were taken in the "B" horizon, a rusty soil horizon ranging from 4" to 12" in depth over the area sampled. The soil cover in the area was developed from glacial tills and is only about 4' to 6' thick.

ASSAY METHOD

Samples were dried in a hot air dryer and then sifted into an 80-mesh nylon sieve. Portions of the minus 80 mesh fraction were weighed with a precision torsion balance. Trace elements were extracted by digesting the weighed samples in perchloric acid. Digested samples were made up to solution and analyzed by a Perkin Elmer 403 atomic absorption spectrophotometer.

RESULTS AND CONCLUSIONS

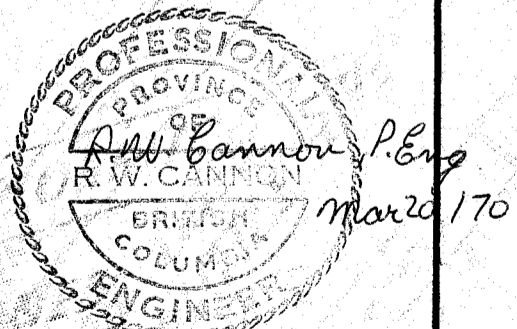
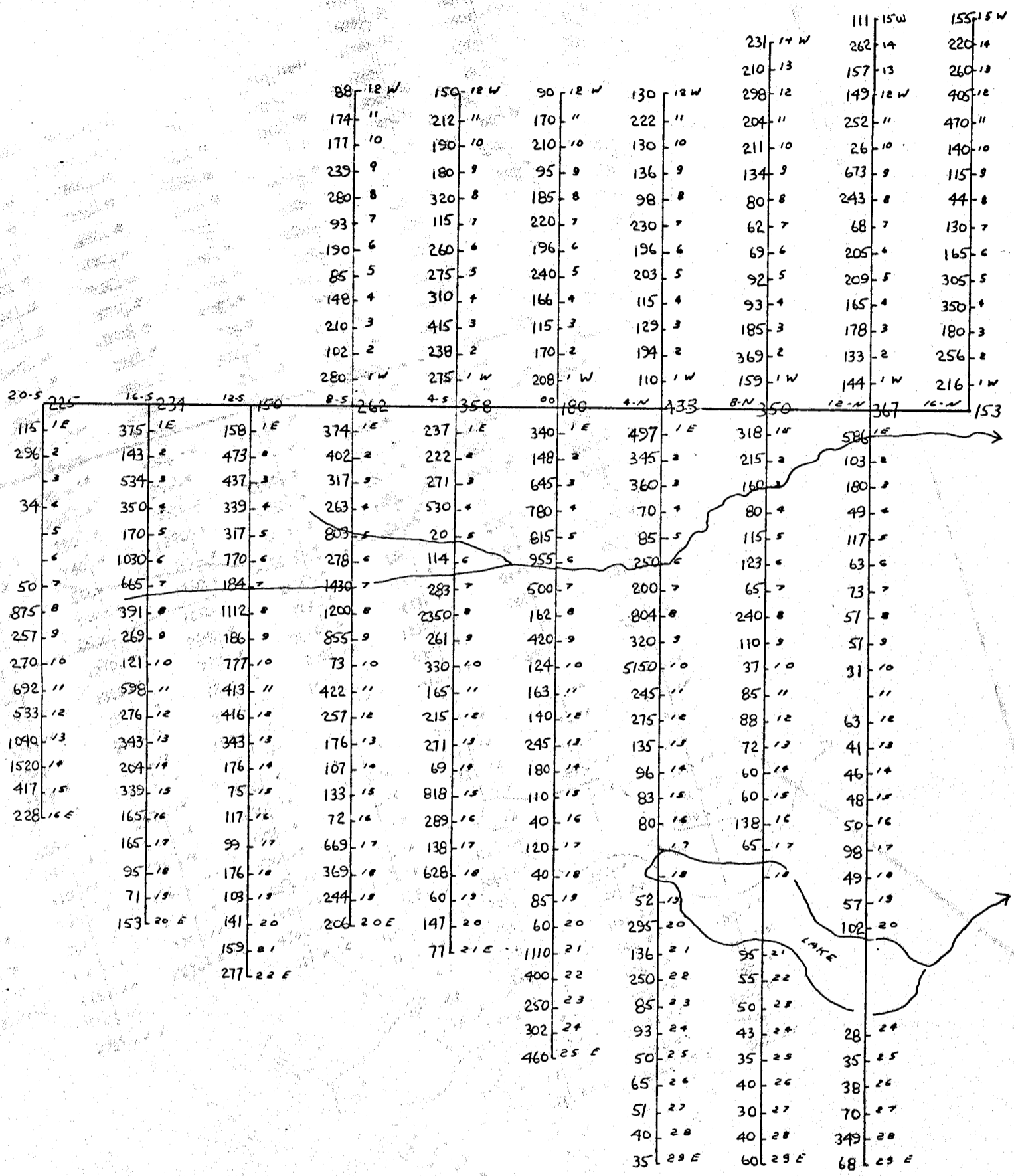
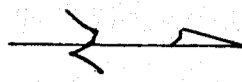
The distribution of Cu, Co, and Mo in soils on the property is not anomalous: Cu has a range of 10 - 38 ppm, Co has a range of 11 - 51 ppm and Mo has a range of 2 ppm or less. There is no evidence of zoning shown by the Cu or Co distribution.

Pb, Zn and Ag show a moderately anomalous distribution but high values tend to be spotty rather than located in well defined anomalous zones. A distinct Pb/Zn anomaly lies on both sides of the northerly flowing creek nearest to the base line extending across all soil sample lines on the grid. Ag does not reflect a covariant distribution in this area. An area of known mineralization near station 8N12W carries moderately high Zn values in soils but little Pb or Ag.

The higher Pb values of the north-south anomaly would indicate the probability of better mineralization in that area.



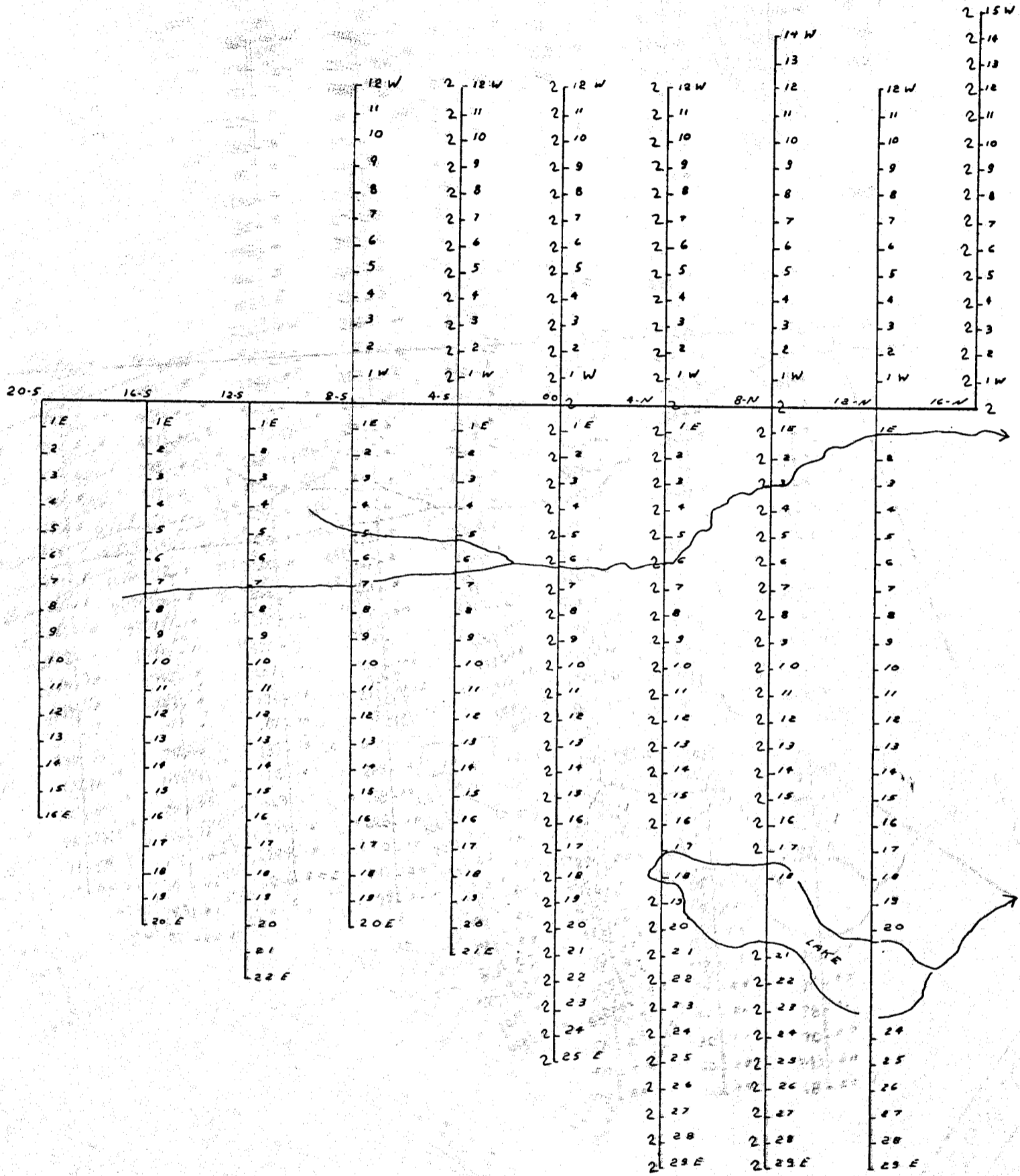
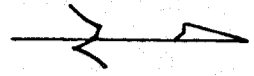
R. W. Cannon, P. Eng.
R. W. Cannon, P. Eng.



2366

Department of
 Mines and Petroleum Resources
 ASSESSMENT REPORT
 NO. **2366** MAP **#5**

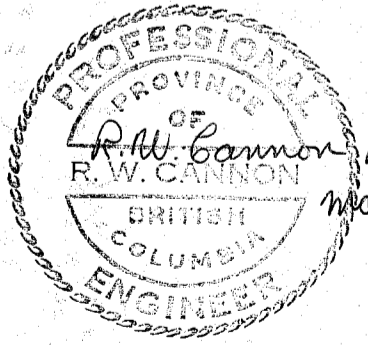
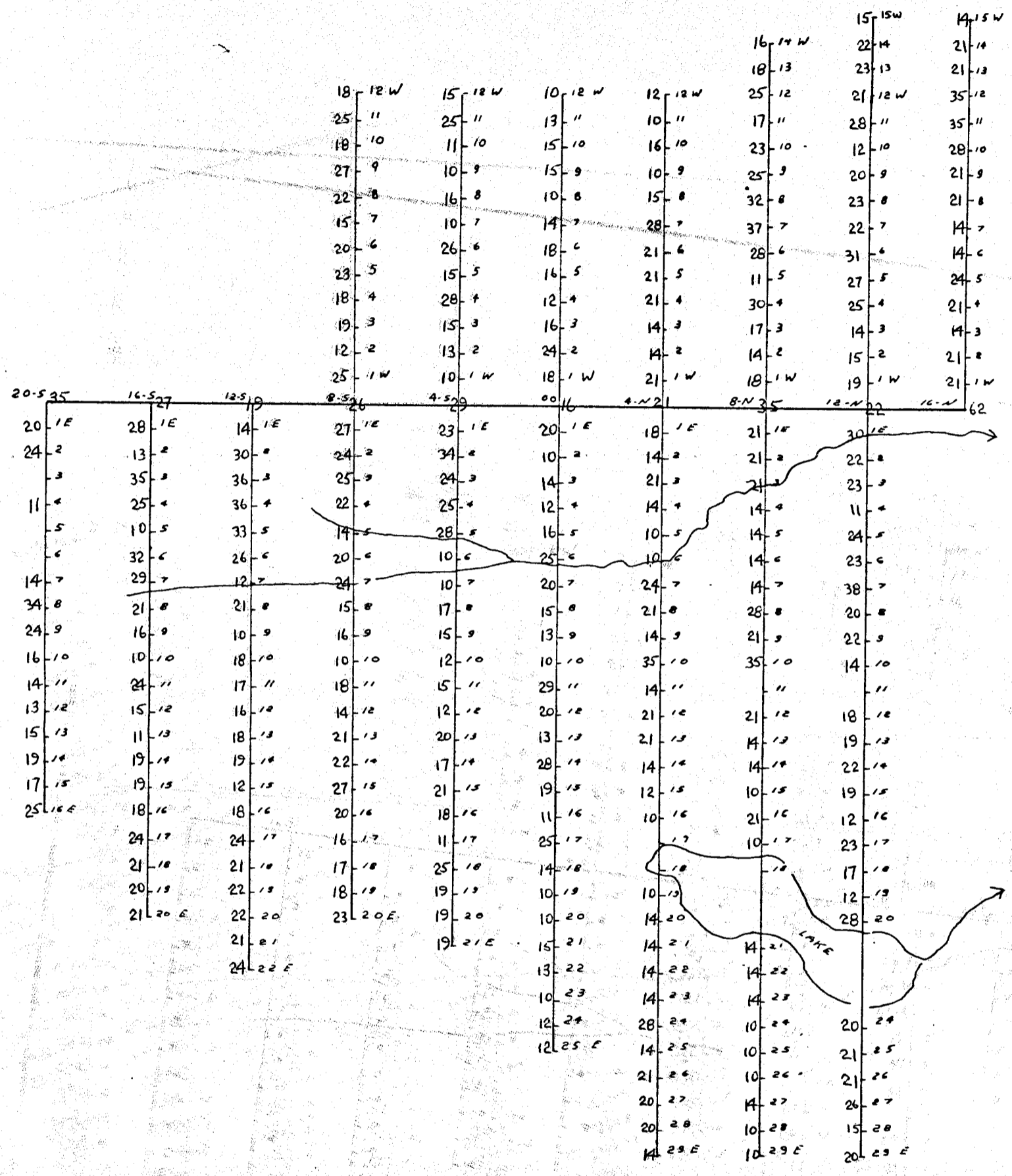
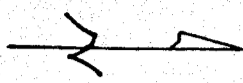
CANEX AERIAL EXPLORATION LTD.
 SOIL SAMPLE LINES
 L.R. CLAIMS - LITTLE RIVER.
 Scale 1"=500' Drawn by L.K. P.R.M. Pb



2366

Department of
Mines and Petroleum Resources
ASSESSMENT REPORT
NO. **2366** MAP **#4**

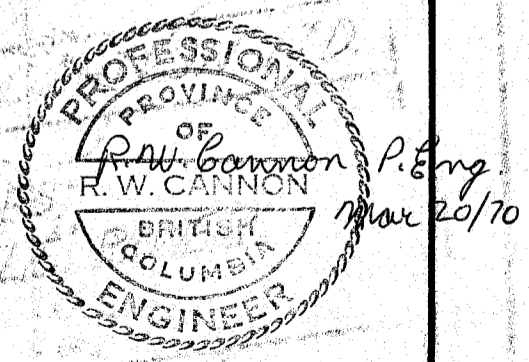
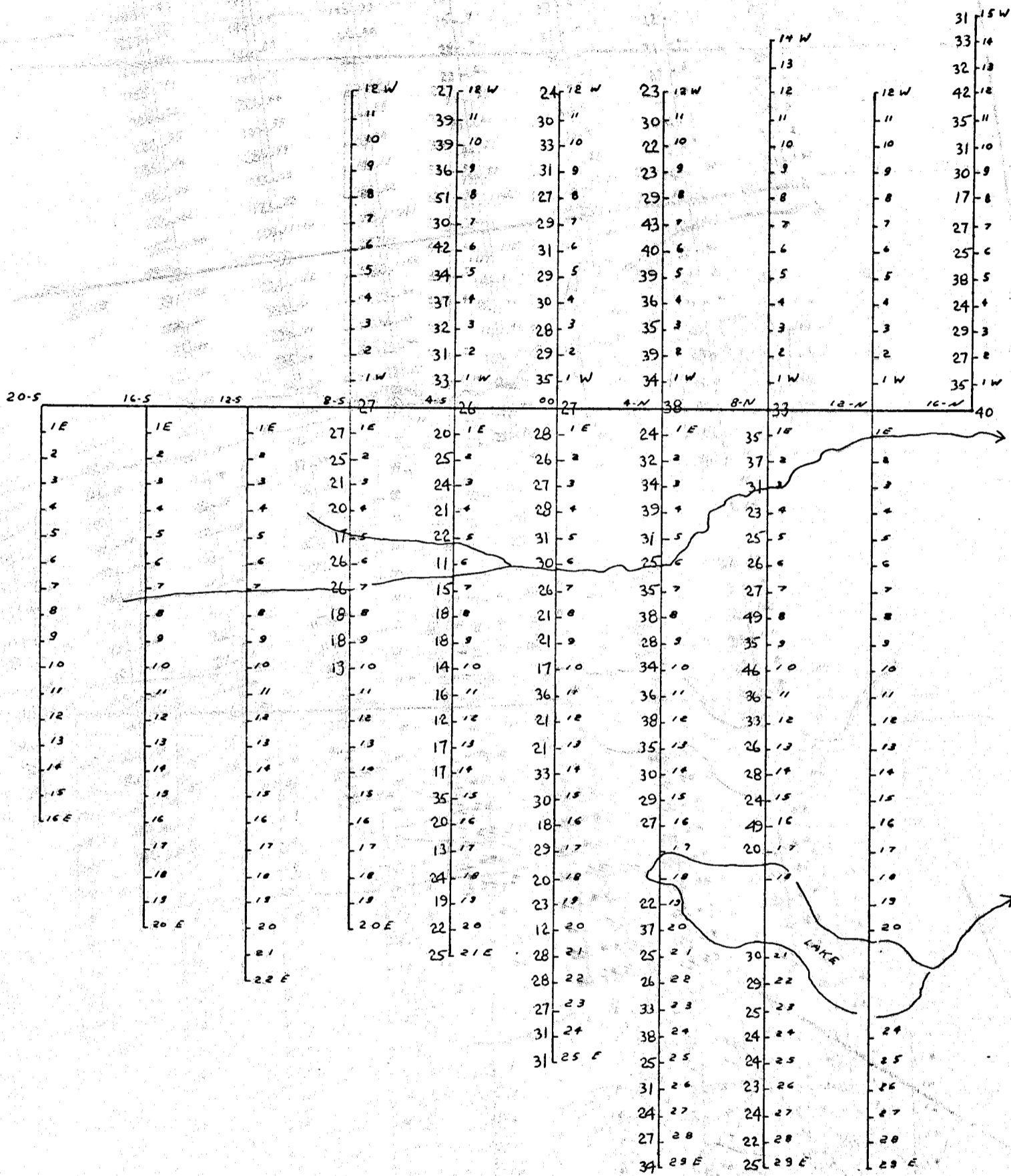
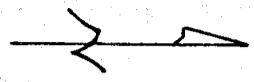
CANEX AERIAL EXPLORATION LTD.
SOIL SAMPLE LINES
LR CLAIMS - LITTLE RIVER.
Scale 1" = 500' Drawn by L.K. P.P.M. Mo



2366

Department of
Mines and Petroleum Resources
ASSESSMENT REPORT
NO. **2366** MAP **#3**

CANEX AERIAL EXPLORATION LTD.
SOIL SAMPLE LINES
L.R. CLAIMS - LITTLE RIVER.
Scale 1"=500' Drawn by L.K. P.P.M. Cu



2366

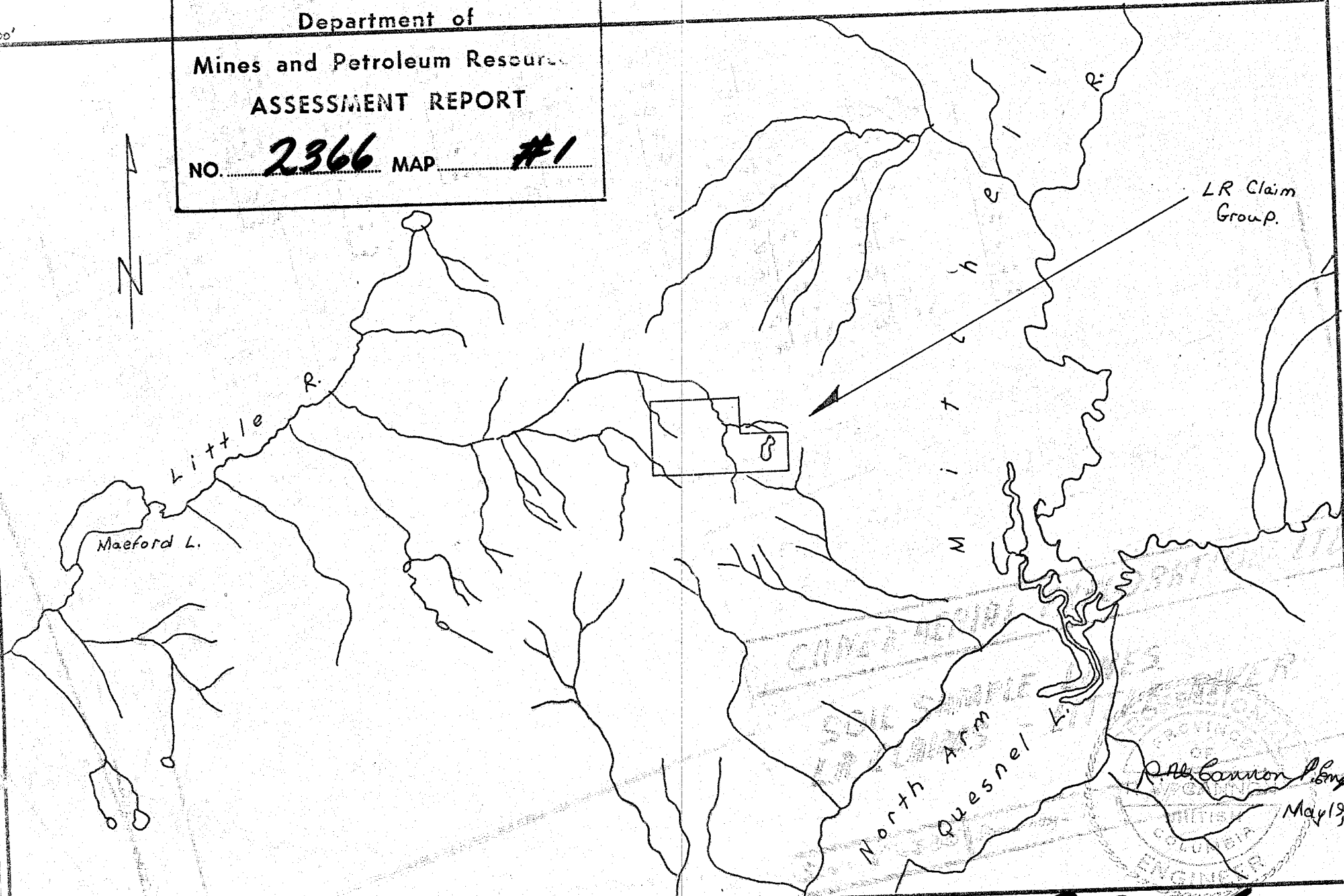
Department of
Mines and Petroleum Resources
ASSESSMENT REPORT
NO. **2366** MAP **#2**

CANEX AERIAL EXPLORATION LTD.
SOIL SAMPLE LINES.
L.R. CLAIMS - LITTLE RIVER.
Scale 1" = 500' Drawn by L.K. P.P.M. Co

21°00'

120°45'

Department of
 Mines and Petroleum Resources
ASSESSMENT REPORT
 NO. **2366** MAP **#1**



LR Claim Group.

Maeford L.

Little R.

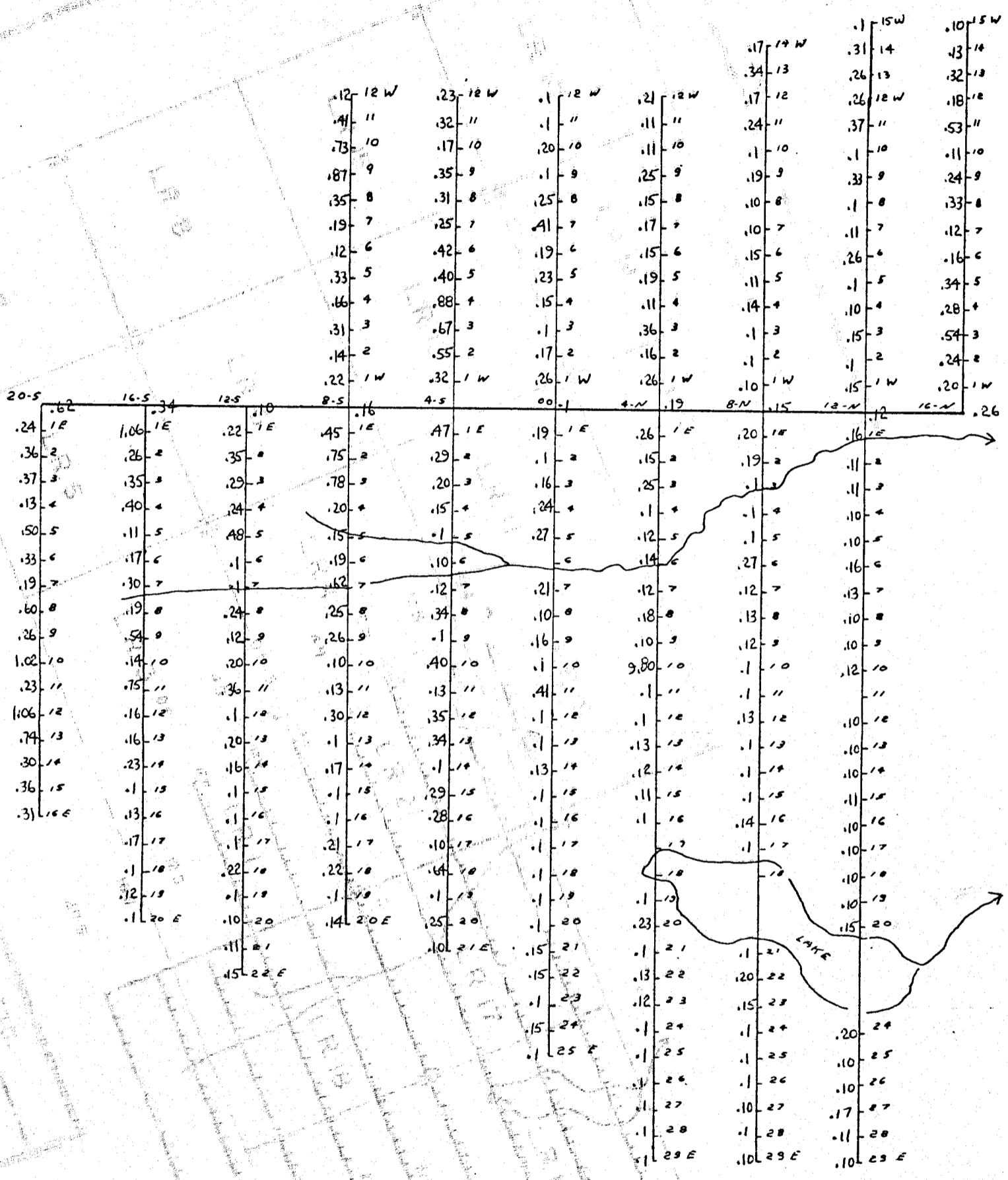
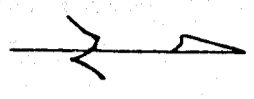
North Arm
Puesnel R.

R.M. Cannon

May 19, 1970

52°
45'

DRAWN <i>R.W.C.</i>	SCALE 1" = 1/2 mile	Canex Aerial Exploration Limited	2366
TRACED	DATE <i>May 19, 1970</i>	INDEX MAP - LR CLAIMS	
APPROVED		FILE NO.	

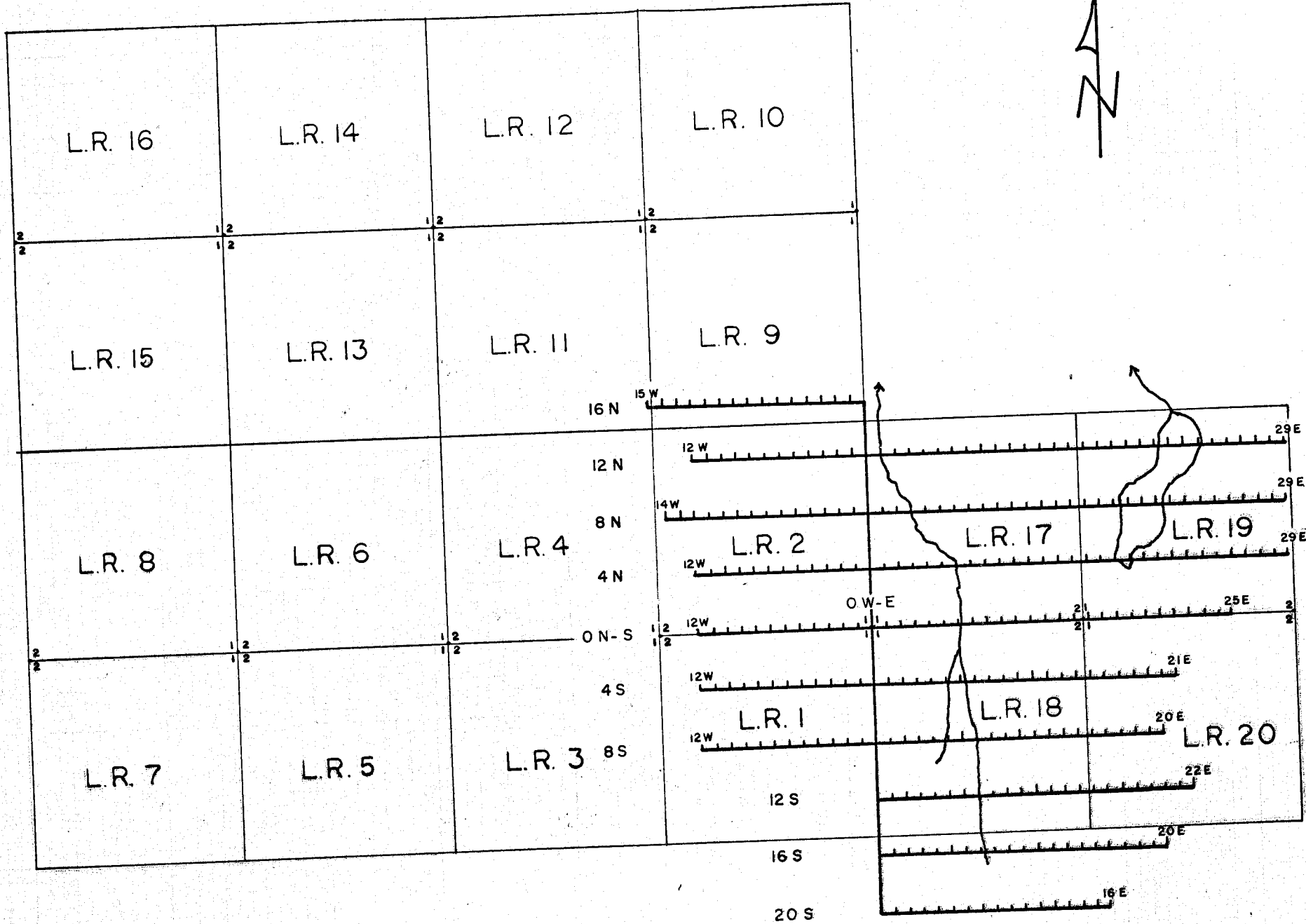


R.W. Cannon P. Eng
Mar 20/70

2366

Department of
 Mines and Petroleum Resources
 ASSESSMENT REPORT
 NO. **2366** MAP **#7**

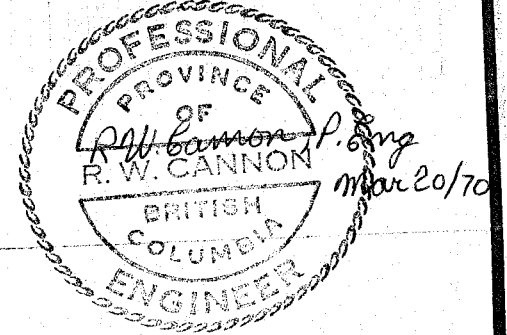
CANEX AERIAL EXPLORATION LTD.
 SOIL SAMPLE LINES.
 L.R. CLAIMS - LITTLE RIVER.
 Scale 1"=500' Drawn by L.K. P.P.M. Ag

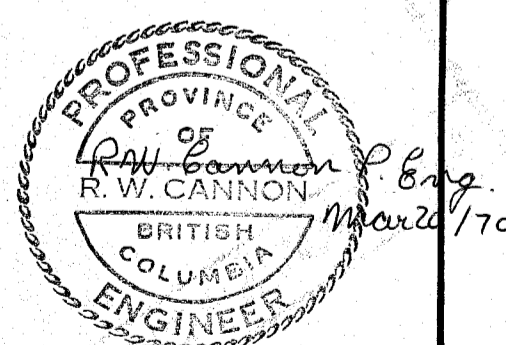
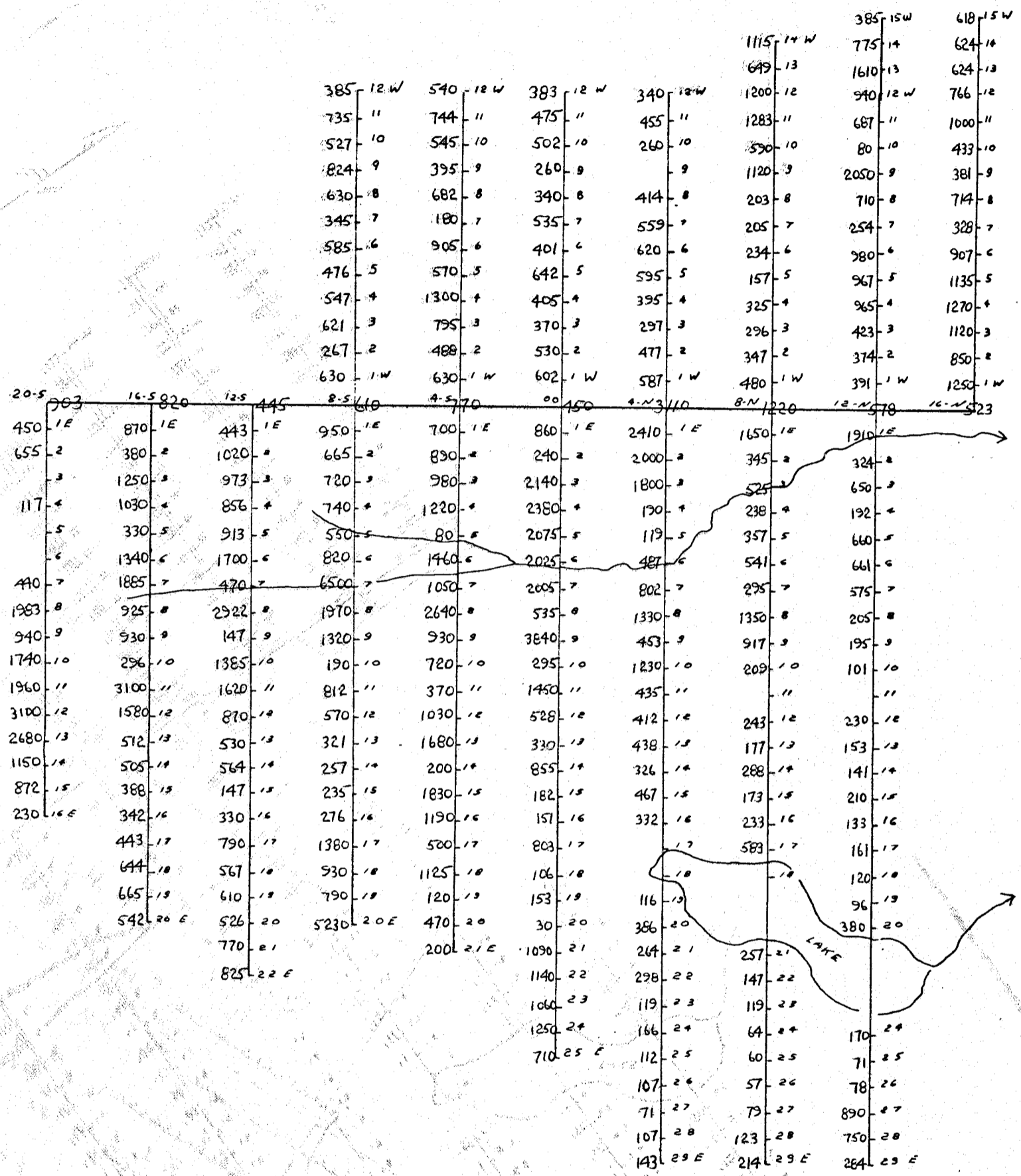
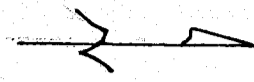


Department of
Mines and Petroleum Resources
ASSESSMENT REPORT
NO. **2366** MAP **#8**

CANEX AERIAL EXPLORATION LTD.
LITTLE RIVER PROJECT:
RELATIONSHIP OF CLAIM BOUNDARIES
TO SOIL SAMPLE GRID LINES.
DRAWN BY: P.D. 18 MARCH, 1970 SCALE: 1" = 1000'

2366





2366

Department of
Mines and Petroleum Resources
ASSESSMENT REPORT
NO. **2366** MAP **#6**

CANEX AERIAL EXPLORATION LTD.
SOIL SAMPLE LINES
L.R. CLAIMS - LITTLE RIVER.
Scale 1" = 500' Drawn by L.K. P.P.M. Zn