

2469

GEOCHEMICAL REPORT

ON

NI CLAIMS

HARRISON LAKE AREA

49° - 121° NW

by

E.R. Gayfer, P. Eng.

for

GIANT EXPLORATIONS LIMITED (N.P.L.)

1131 Melville Street,
Vancouver 5, B.C.

June 8, 1970

TABLE OF CONTENTS

	<u>Page</u>
INTRODUCTION	3
PROPERTY	3
GEOLOGY.	4
GEOCHEMICAL SURVEYS.	4
PERSONNEL.	5
EXPENDITURES	6

MAPS (in pocket)

- #1 No. 1 - Claim Map.
- #2 No. 2 - Stream Sediment Sample numbers and locations.
- #3 No. 3 - Stream Sediment nickel-copper values (PPM).
- #4 No. 4 - Soil Sample numbers and locations.
- #5 No. 5 - Soil Sample nickel values (PPM).
- #6 No. 6 - Soil Sample copper values (PPM).
- #7 No. 7 - Soil Sample lead values (PPM).

<p>Department of Mines and Petroleum Resources ASSESSMENT REPORT</p> <p>NO. <u>2469</u> MAP.....</p>
--

INTRODUCTION

Giant Explorations Limited (N.P.L.) is carrying out a comprehensive exploration program in an area lying between Harrison Lake and the Giant Mascot nickel mine on Stulkawhits Creek. In the summer of 1969, 242 mineral claims were staked for the Company to cover this area.

The exploration program is being carried out in two stages as follows:-

Stage I - preliminary stream sediment sampling; contour soil sampling; airborne magnetometer surveys; and geological reconnaissance, for the purpose of defining areas of basic and ultrabasic rocks which may be of interest.

Stage II - close prospecting, together with detailed geochemical and geophysical surveys to cover those areas of interest located during Stage I.

This report describes a portion of the Stage I work which relates to 88 claims centered on Talc Creek and the report has been written for assessment work purposes.

PROPERTY

The claims to which the work relates are shown on Map No. 1, which may be found in the folder at the back of the report. The claims are listed as follows:-

Ni 1 - 16 Incl. Record Nos. 21771 - 786 Incl.

Ni 19 - 56 Incl. Record Nos. 21787 - 824 Incl.

Ni 91 - 96 Incl. Record Nos. 21853 - 858 Incl.

They are located in an area of rugged topography with fairly dense forest growth. Elevations range from 100 feet to 5,500 feet above sea level, with one mountain peak rising to nearly 7,000 feet. Some logging operations have been carried out in the lower areas. Heavy snow pack imposes a very short exploration season at the higher elevations.

GEOLOGY

The area is underlain by Chilliwack group sediments and intercalated volcanics of carboniferous and later age, which have been intruded by magmas of dioritic, basic, and ultrabasic composition. Soil cover is extensive in the valleys but there is a good percentage of rock outcrop at higher elevations.

GEOCHEMICAL SURVEYS

In 1969, stream sediment sampling was carried out on Talc Creek and its tributaries as shown on Map No. 2 and Map No. 3. The samples were sent to Warnock Hersey International Limited in Vancouver, for assay. After drying and screening, they digested a portion of the -80 mesh fraction to dryness, in a mixture of nitric acid and sulphuric acid. Following digestion, the salts were redissolved with hydrochloric acid, diluted with water, boiled, cooled and made up to volume. The metal content for nickel and copper was determined on an atomic absorption machine.

In 1970, contour soil sampling was carried out on both sides of Talc Creek. Samples were taken at sufficient depth to be reasonably free from organic matter. Sample contours were spaced at 400 foot vertical intervals, with individual samples being taken at 200 foot horizontal spacing. Positioning control was attained through use of Thommen altimeters, 1:50,000 scale contour maps, and aerial photographs. All sample locations were flagged and numbered.

Drying and screening of the soil samples was carried out at field headquarters after which the -80 mesh fraction was forwarded to the Giant Mascot Mine assay laboratory. Here a one gram portion of the sample was heated in a test tube over an open flame until the organic matter was burned off. It was then digested with nitric acid for one and a half hours in a hot water bath and followed by cooling, mixing and settling. Values in PPM for nickel, copper and lead were obtained with an atomic absorption machine.

Sample locations and numbering are shown on Map No. 4, while metal values in PPM are shown on Map Nos. 5, 6 and 7.

PERSONNEL

During 1969, Mr. A.H. Dawson, B.Sc. (geologist) headed up the work party, while in 1970, Mr. N.W. Berg, B.Sc. (physics) was Party Chief. Both Mr. Dawson and Mr. Berg carried out the program under the general supervision of the author.

The 1969 party operated between August 11, 1969 and September 30, 1969, while the 1970 party commenced operations during May and at the time of writing are still in the field.

1969 Party

- A.H. Dawson - 3509 South Main St., Seattle, Wash.
- A.R. Duchanan - 129 Thistle Grove, Welwyn Garden City, Herts, U.K.
- D.W. Dalby - Liverpool, Nova Scotia
- P.F. Mason - 10 Charnwood Rd., Don Mills, Ontario
- C.R. Moodie - 76 Ethel Ave., Mill Valley, California

1969 Party 1970?

- N.W. Berg - 5359 - 202 St., Langley, B.C.
- M.M. Brown - 3954 Bayridge Court, West Vancouver, B.C.
- G.R. Clarke - 8090 Sussex Ave., Burnaby 1, B.C.
- D.B. Fournier - Bear Creek, Harrison, B.C.
- D. Lovely - 3092 Paisley Rd., North Vancouver, B.C.
- B. Livingston - 6876 Adera St., Vancouver 14, B.C.

Declared before me at the

City

of

Vancouver

, in the

Province of British Columbia, this

10

day of

July 1970

, A.D.

Joan Lunn

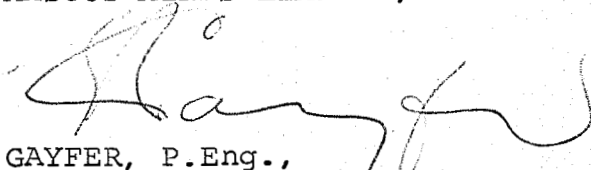
EXPENDITURES

Expenditures incurred up to June 10th, 1970, were as follows:-

<u>Accounting Heading</u>	<u>Expenditure</u>
Engineering and Geology	\$ 3,434
Camp operation and accommodation.	1,290
Assaying and sampling	1,816
Geochemical and geophysical	1,293
Vehicle operation	1,184
	<hr/>
Total expenditure.	\$ 9,017

Yours truly,

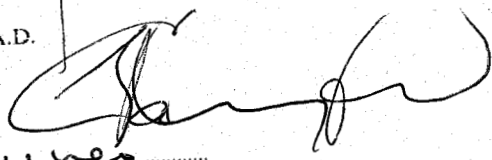
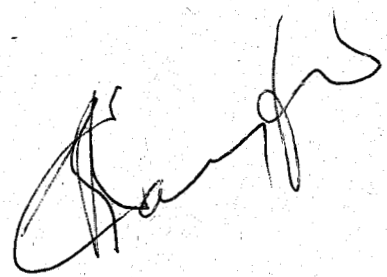
GIANT MASCOT MINES LIMITED,



E. R. GAYFER, P.Eng.,
Manager of Property Acquisition

ERG:mk

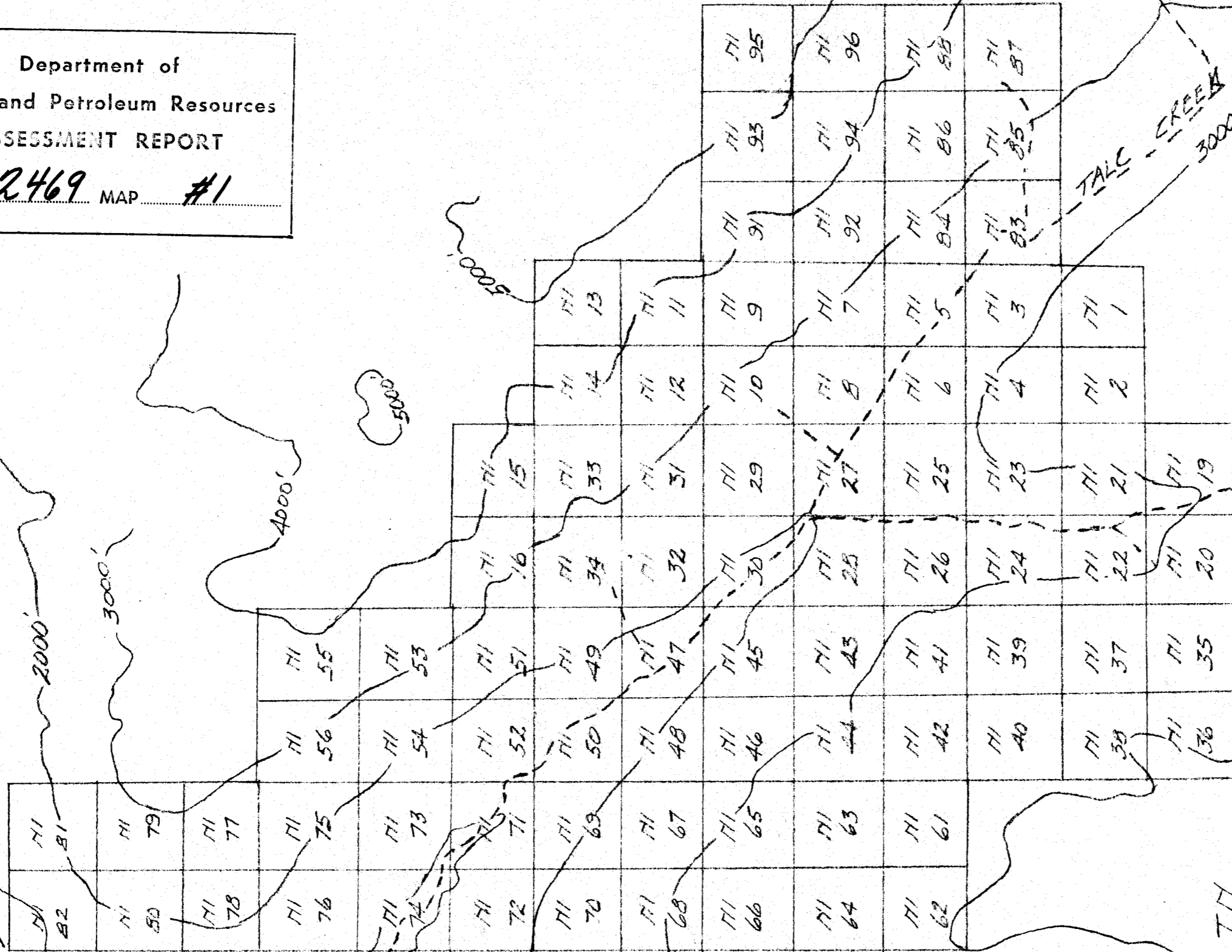
Declared before me at the city
of Vancouver, in the
Province of British Columbia, this 10
day of July 1970, A.D.



Jan Sures
A Commissioner for taking Affidavits within British Columbia or
A Notary Public in and for the Province of British Columbia
Sub-mining Recorder

Department of
Mines and Petroleum Resources
ASSESSMENT REPORT

NO. 2469 MAP #1



GIANT EXPLORATIONS LIMITED

MI CLAIM GROUP

CLAIM MAP

SCALE

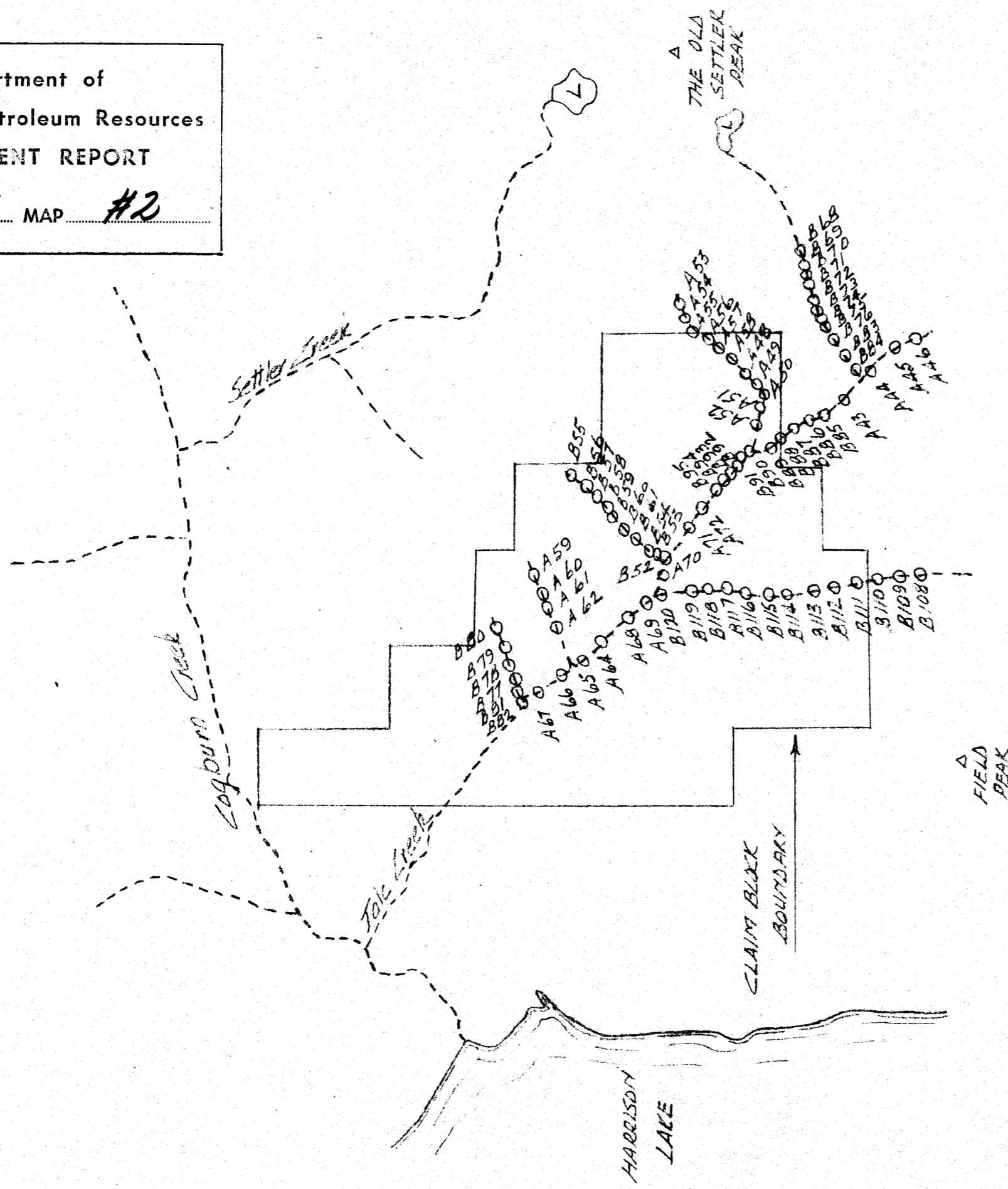
Drawn by
E.R. GAYTER

MAP No. 1

To accompany geological report by
E.R. GAYTER R. Eng on McLean's claims
see Newfoundland, dated July 8, 1970

2469

Department of
 Mines and Petroleum Resources
 ASSESSMENT REPORT
 NO. 2469 MAP #2



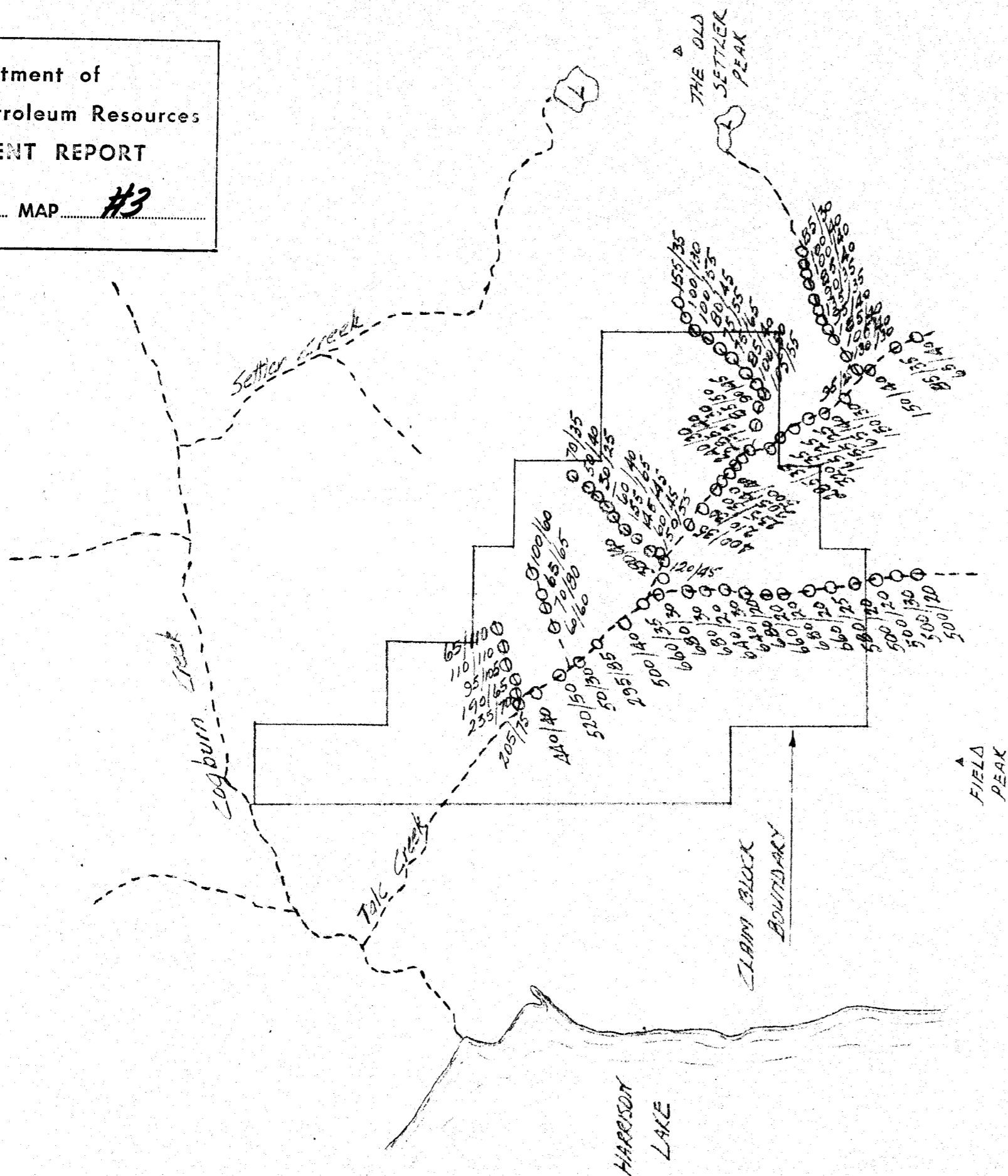
GIAATT EXPLORATIONS LIMITED	
M CLAIM 6701P	
STREAM SEDIMENT SAMPLE	
NUMBERS AND LOCATION	
Map No 2	Scale Drawn by
	1:50000 E.R. Goyter
To accompany geochemical report by E.R. Goyter filed on M Claims, Harris Lake New Brunswick, N.B., dated July 8, 1970	

[Handwritten signature]

2469

Department of
Mines and Petroleum Resources
ASSESSMENT REPORT

NO. **2469** MAP **#3**



PPM metal values shown thus - nickel/copper

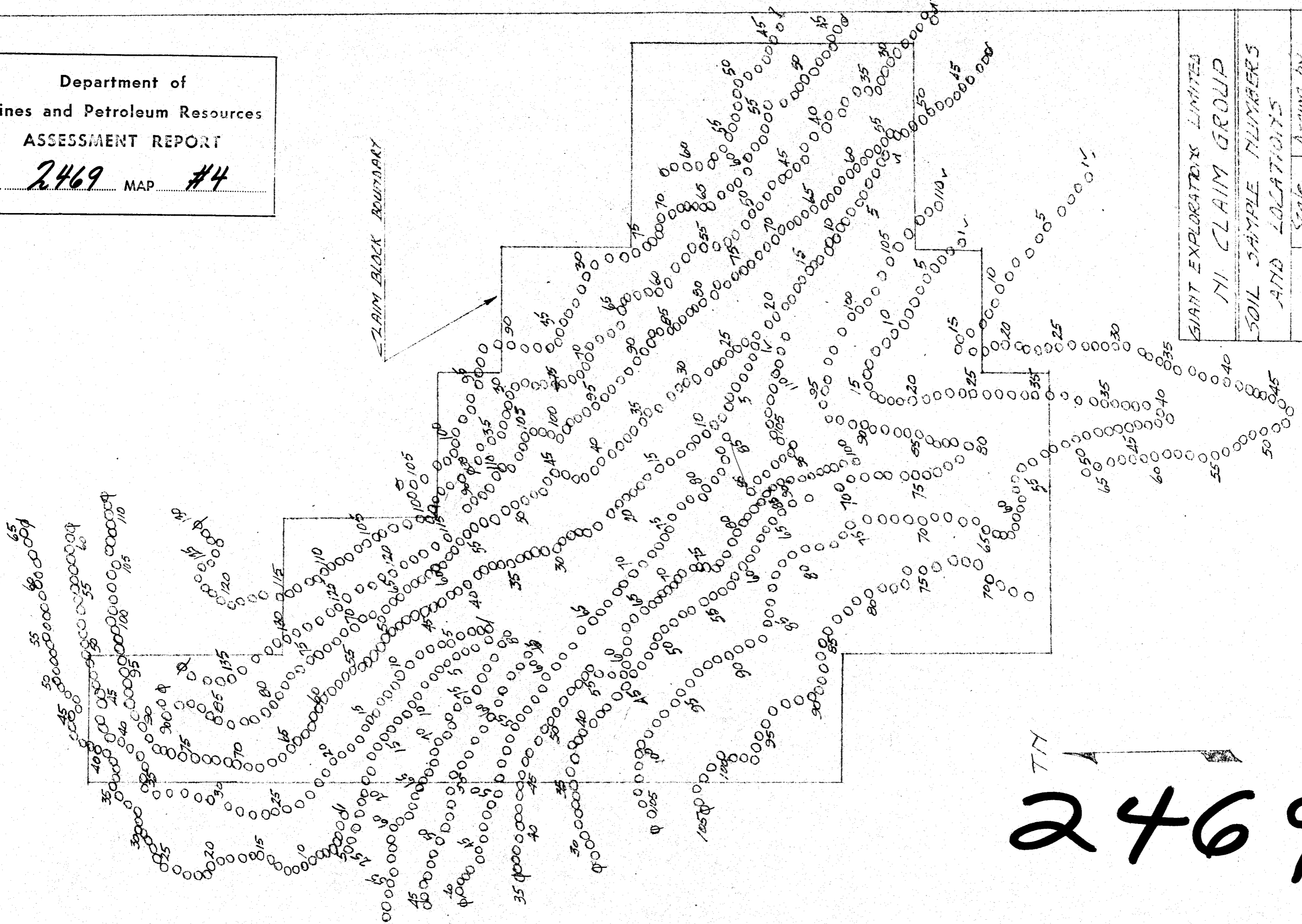
2469

GIANT EXPLORATIONS LIMITED	
NI CLAIM GROUP	
STREAM SEDIMENT NICKEL -	
- COPPER VALUES (PPM)	
MAP No. 3	Scale Drawn by
1:50000	E. R. Gayler
To accompany geochemical report by	
E. R. Gayler, P. Eng., on Ni claims, Harrison	
Lake, New Westminster, B.C., dated July 8, 1970	

[Handwritten signature]

Department of
Mines and Petroleum Resources
ASSESSMENT REPORT

NO. 2469 MAP #4

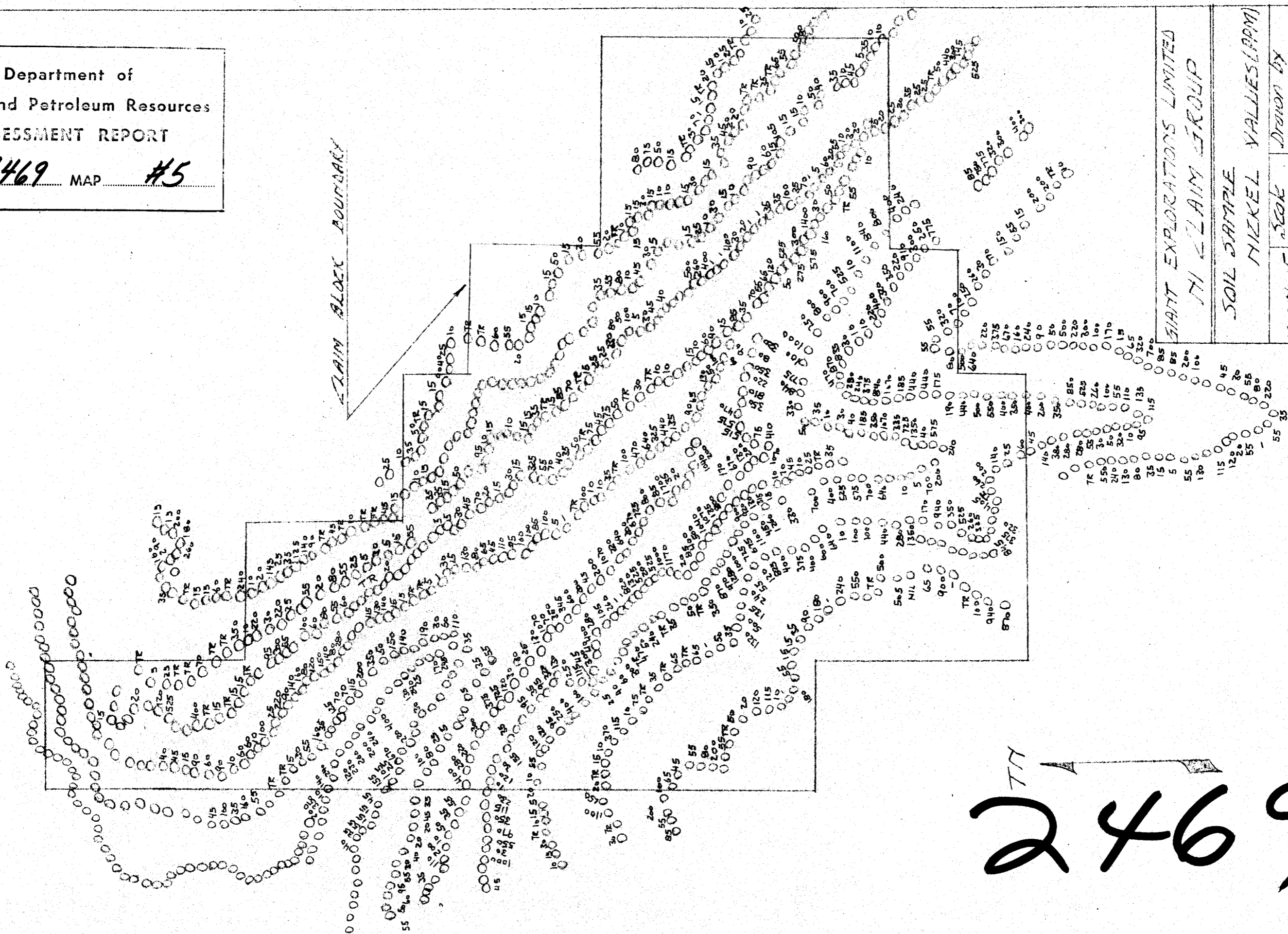


GIANT EXPLORATIONS LIMITED	
M CLAIM GROUP	
SOIL SAMPLE NUMBERS AND LOCATIONS	
MAP No 4	Drawn by E.R. Goyter
To accompany geophysical report by E.R. Goyter P. Eng. on M-Claims Area, 1000 ft. West of Highway No. 1, dated July 8, 1972	

TIN
2469

Department of
Mines and Petroleum Resources
ASSESSMENT REPORT

NO. 2469 MAP #5



GIANT EXPLORATIONS LIMITED

THE CLAIM GROUP

SOIL SAMPLE
NICKEL VALUES (PPM)

MAP No. 5
Scale 1"=2000'

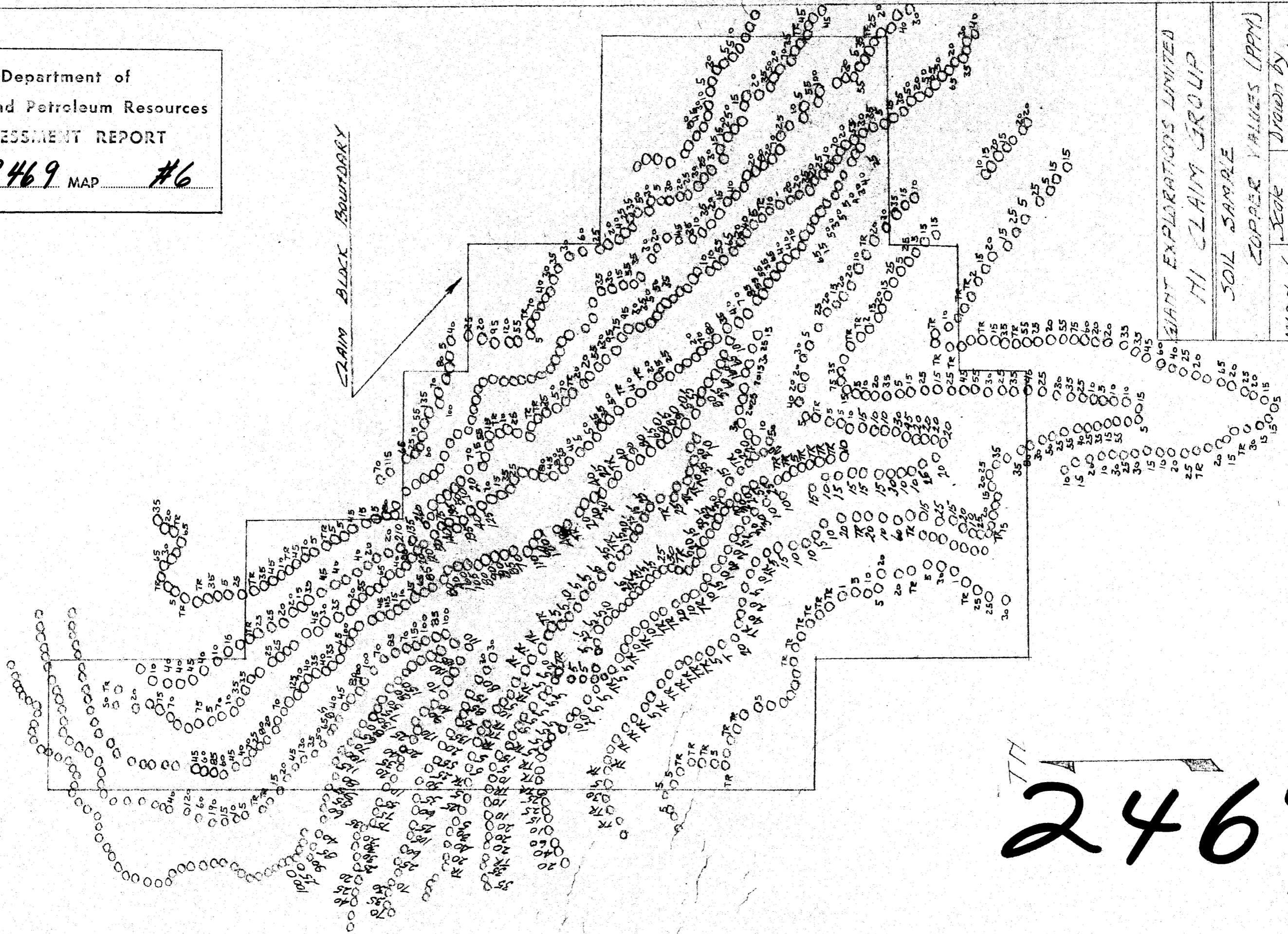
Drawn by
E. R. Goyter

To accompany geochemical report by
E. R. Goyter P. Eng. on Ni claims, Hanson
Lake, Renfrew County, ND, dated July 8, 1970

[Handwritten signature]

2469

Department of
Mines and Petroleum Resources
ASSESSMENT REPORT
NO. **2469** MAP # **6**



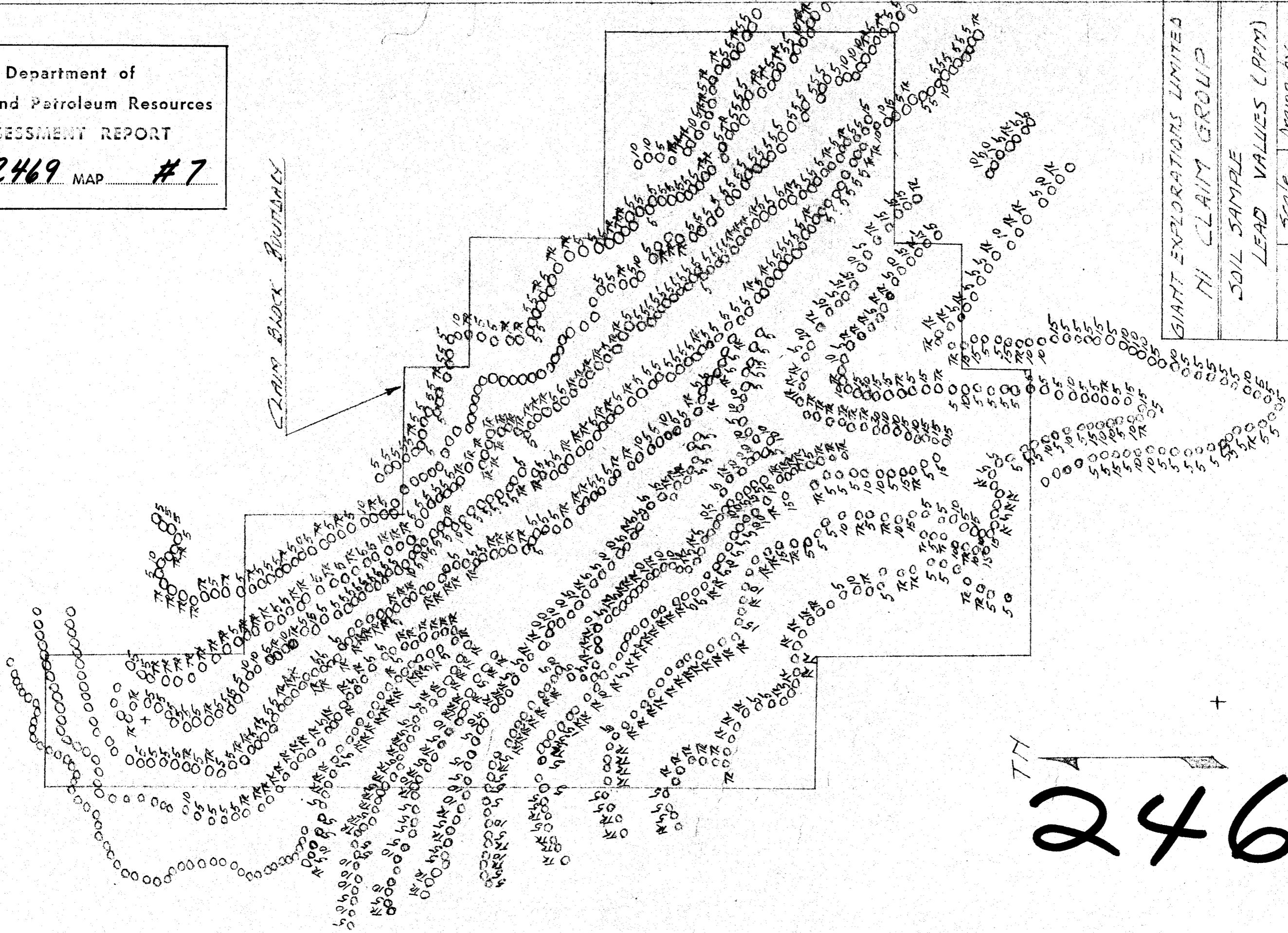
GIANT EXPLORATIONS LIMITED
THI CLAIM GROUP
SOIL SAMPLE
SUPER VALUES (PPM)
MAP No 6
Scale 1" = 2000'
Drawn by E.R. Bayler
To accompany geochemical report by
E.R. Bayler P.Eng. on Nicklaus Hill
Loc. New Westminster MA, dated July 8, 1970

777
2469

Department of
Mines and Petroleum Resources
ASSESSMENT REPORT

NO. **2469** MAP **#7**

CLAIM BACK BOUNDARY



GIANT EXPLORATIONS LIMITED	
NH CLAIM GROUP	
SOIL SAMPLE	
MAP No 7	Scale 1" = 2000'
DRAWN BY E.R. GAYLER	
To accompany geochemical report by E.R. Gayler P.Eng. on McLeans tenement late 1960s/early 1970s	

TIN

2469

[Handwritten signature]