

CHUTANLI LAKE CU PROSPECT

REPORT
on

GEOCHEMICAL SURVEY MAY 21, 1970 to MAY 30, 1970

CHU (1-24) CLAIM GROUP

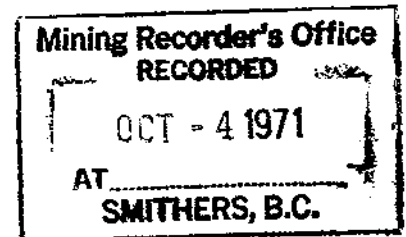
Owner

AMERICAN SMELTING & REFINING COMPANY

Located 3 miles west of west end of Chutanli Lake

OMINECA MINING DIVISION

53°-124° SW



D.H. Olson, P. Eng., B.C.

June 1970

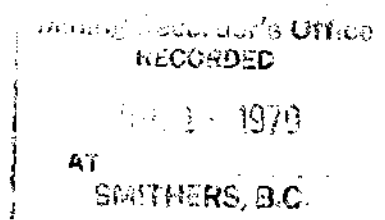


TABLE OF CONTENTS

	PAGE
INTRODUCTION	1
LOCATION AND ACCESS	1
FIELD PROCEDURE	1
GEOCHEMICAL SURVEY	1
INTERPRETATION	2
EXPENDITURES	2
APPENDIX "A" - Mineral Claim Schedule	5
#1 GEOCHEMICAL ASSAY MAP ACCOMPANIED BY GEOLOGY (Scale 1" = 500')	

Department of
Mines and Petroleum Resources
ASSESSMENT REPORT
NO. 2535 MAP

GEOCHEMICAL SURVEY REPORT

on

CHU #1-24 CLAIM GROUP

INTRODUCTION

The Chu #1-24 Claim Group discussed in this report is located 2 $\frac{1}{4}$ miles west of Chutanli Lake and approximately eighty miles SE of Burns Lake village.

Geologic mapping was carried out during the geochemical soil survey. From the soil samples, determinations were made for copper and molybdenum. The geologic mapping and soil survey were performed by American Smelting and Refining Company, under the direction and supervision of D.H. Olson, Professional Engineer for the Province of British Columbia.

LOCATION AND ACCESS

Mineral claims covering the prospect area are centered on a small lake which is situated approximately 2 $\frac{1}{4}$ miles west of the west end of Chutanli Lake. The claims area extends for 6,000 feet in an east-west direction, and 9,000 feet in a north-south direction. Elevations within the claim group range from 3,700 feet to 4,500 feet, approximately.

Access to the claim group was by float equipped aircraft from Kenney Dam to Chutanli Lake, then by helicopter from Chutanli Lake to the Chu claims.

FIELD PROCEDURE

A soil survey and mapping grid pattern was established on the 24 contiguous mineral claims. The grid area measures 6,000 feet by 9,000 feet. On the north-south grid lines spaced 700 feet apart, soil sample sites were established at 400 foot intervals. Each grid line and sample site was well marked with appropriately numbered orange flagging tape.

GEOCHEMICAL SURVEY

At each sample site, if possible, soil samples were carefully collected from the "B" soil horizon.

Detailed chemical analysis of the soil samples were made by Vancouver Geochemical Laboratories Limited of North Vancouver, B.C. Hot HNO_3 and HClO_4 extraction techniques were used for Cu and Mo, respectively. The method of analysis was by atomic absorption spectrometer (Tectron AA4 and AA5) using acetylene and air for Cu detection, and nitrous with acetylene for the detection of Mo. The analytical data are shown on the accompanying Geochemical Survey Map.

INTERPRETATION

An extensive mantle of glacial till which supports a heavy forest cover of lodge pole pine, Engleman spruce and alpine fir, covers the claim group. Good soil samples representative of the "B" soil horizon, or zone of oxidation, were obtained over most of the grid area.

Interpretative geology based on observed rock outcrops shows a wedge-like section of a volcanic-sedimentary rock assemblage of the Hazelton Group which is intruded by granite of Late Jurassic or Early Cretaceous Age. Anomalous Cu and/or Mo values have been obtained from areas of contact between the granite and the Hazelton rocks.

Anomalous Cu values outlined on CHU #6 and #8 mineral claims indicate the need for further exploration. Anomalous Mo values occurring on CHU #17, #18 and #19 mineral claims also outline an area which should be explored further. A trenching and/or diamond drilling program should be undertaken so as to evaluate the source of the anomaly.

EXPENDITURES

The following is a summary of costs incurred, and personnel involved, in completing the geochemical survey on the CHU Group of 1-24 mineral claims:

(1) ROTARY WING CHARTER- BELL G3B1

21 May/70 - Alpine Helicopters Limited, Burns Lake, B.C. Place camp and crew of six men on CHU claims from Chutanli Lake plus helicopter ferrying charge from and to Burns Lake.

6:00 hrs @ \$150/hour

\$ 900.00

.....3

27 May/70 - Alpine Helicopters Limited
Fly in supplies and one additional crew
member from Burns Lake.

4:00 hrs @ \$150/hr. \$ 600.00

30 May/70 - Alpine Helicopters Limited
Remove crew of six men and camp from CHU
claims upon completion of the survey.

7:15 hrs @ \$150/hr. 1,087.25

TOTAL ROTARY WING CHARTER \$ 2,587.25

(2) FIXED WING CHARTER - Otter Aircraft (float-equipped)

21 May/70 - Transprovincial Airlines Limited,
Burns Lake, B.C.

Transport camp, fuel and crew of six men from
Kenney Dam to Chutanli Lake - 3 trips plus
round trip ferry charge for Otter, Burns Lake
to Kenney Dam

\$ 270.00

TOTAL FIXED WING CHARTER \$ 270.00

(3) GRID SAMPLE SURVEY, SAMPLE COLLECTION AND GEOLOGIC
MAPPING

Gilmour, W.R., 21 May/70 to 30 May/70, inclusive.
10 days @ \$27.00/day \$ 270.00

Kuo, S.L., 21 May/70 to 30 May/70, inclusive.
10 days @ \$27.00/day 270.00

Martell, H., 21 May/70 to 30 May/70, inclusive.
10 days @ \$22.00/day 220.00

Wellingham, J., 21 May/70 to 30 May/70, inclusive.
10 days @ \$18.00/day 180.00

Casey, A.T., 21 May/70 to 30 May/70, inclusive.
10 days @ \$21.81/day 218.10

Blechingberg, S., 21 May/70 to 30 May/70, inclusive.
10 days @ \$18.00/day 180.00

.....4

Peters, B.N., 27 May/70 to 30 May/70, inclusive.
4 days @ \$18.00/day \$ 72.00

TOTAL WAGES \$ 1,410.10

(4) ACCOMMODATION AND MEALS

6 men for 10 days for a total of 60 days
@ \$8/day \$ 480.00

\$ 480.00

(5) LABORATORY ANALYSIS

Vancouver Geochemical Laboratories Limited,
North Vancouver, B.C.

225 soil samples analyzed for Cu and Mo, plus
sample preparation @ \$1.70 \$ 382.50

Shipping charge 5.30

\$ 387.80

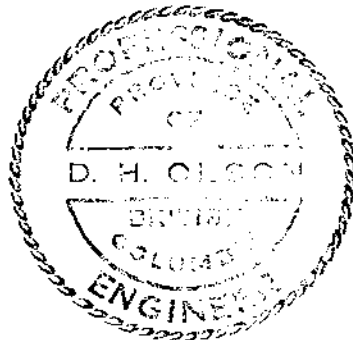
(6) REPORT AND MAP PREPARATION - SUPERVISION

Olson, D.H., 3 days @ \$50 \$ 150.00

\$ 150.00

TOTAL (1-6, inclusive) \$ 5,285.15

DHO:sm



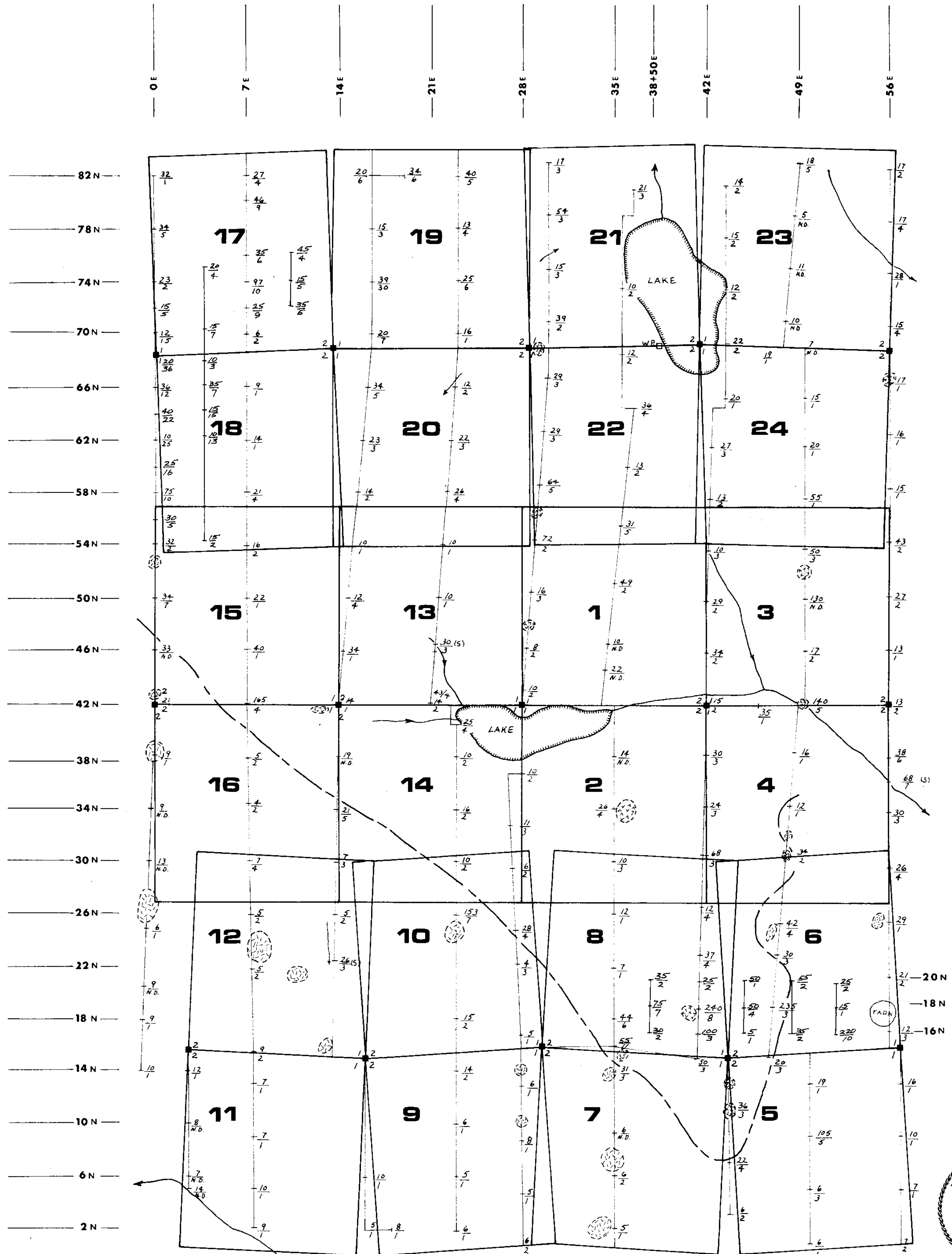
D. H. Olson

D.H. Olson,
Professional Engineer.

APPENDIX "A"

MINERAL CLAIM SCHEDULE

<u>GROUP</u>	<u>CLAIM NAME</u>	<u>RECORD NUMBER</u>
CHU GROUP	CHU #1 - 24 INCLUSIVE	75737 to 75760 INCLUSIVE



TO ACCOMPANY REPORT
 Dated: JUNE, 1970
 By: D. H. OLSON, P.E.
 Filed: [Signature]

LEGEND

- Fine grained, hornblende, biotite quartz diorite.
- Medium - coarse grained, biotite hornblende granodiorite/quartz diorite.
- Metamorphosed volcanics/sediments foliated, gneissic schistose.
- Rock outcrop
- Claim post
- Rock contact

Soil Sample	ppm Cu	Silt Sample	ppm Cu (S)
	ppm Mo		ppm Mo

Department of
 Mines and Petroleum Resources
 ASSESSMENT REPORT
 NO. 2535 MAP #1

AMERICAN SMELTING AND REFINING CO.
CHU 1-24 CLAIM GROUP
CHUTANLI LAKE PROSPECT
 OMINECA MINING DIVISION
GEOLOGY
& SOIL GEOCHEMISTRY SURVEY
 June 1970

WRG & DHQ
 500 0 500 1000 ft.