

2547

94K/12E

1. LINE-CUTTING
2. NORTH GROUP - IT, Toad River, Billy Fr.
South Group - IT, Toad, Toad River, AT
3. Stokes Exploration Management Co. Ltd.,
(R.B. Stokes - P.Eng)
4. Churchill Copper Corp.
Work done for Brameda Resources Ltd.
5. June 13/69 - June 13/70
6. Liard

Map #1 - Survey Grid



CENTRAL MICROFILM BUREAU

File No. 2547

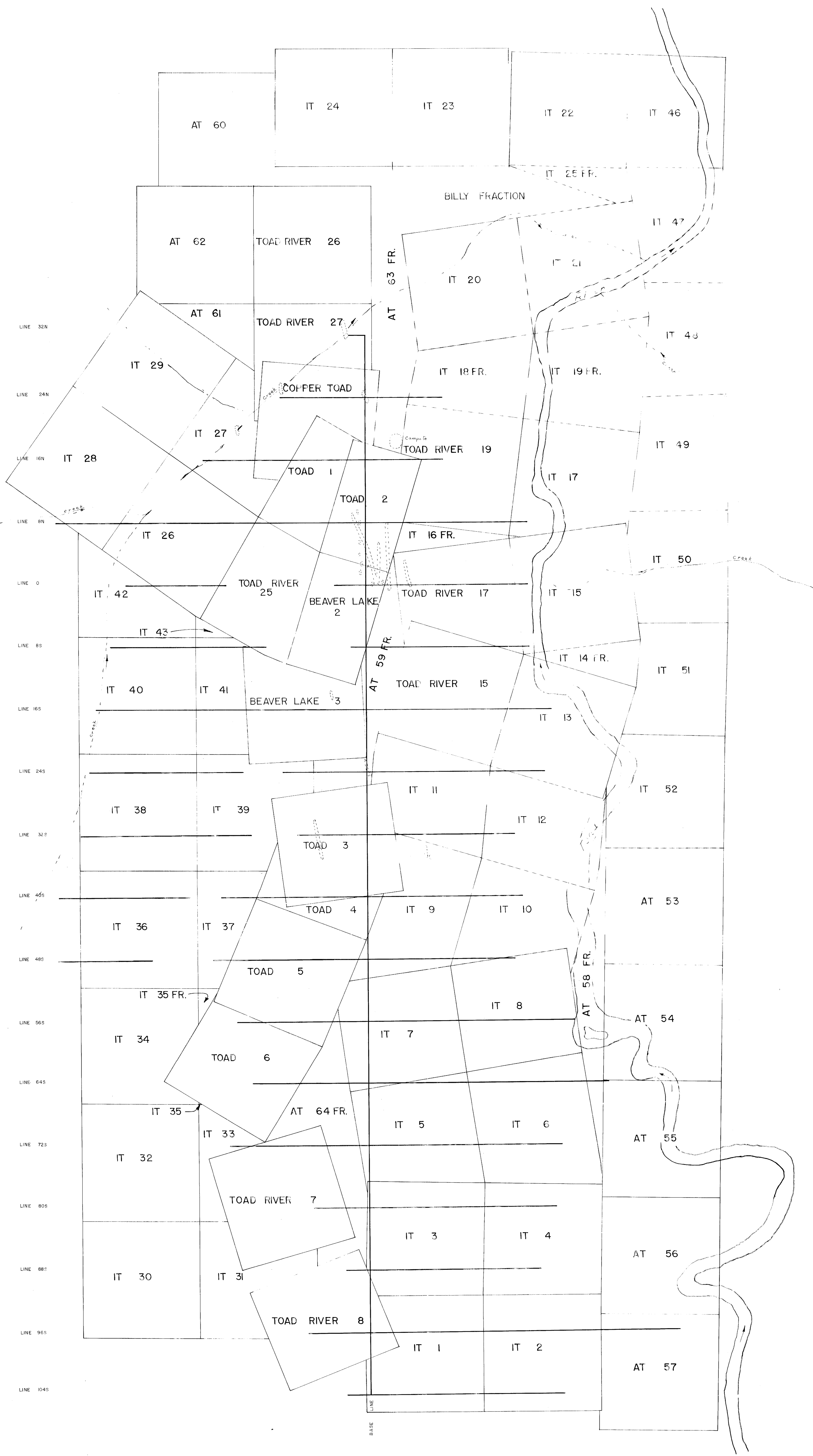
Not available at time of filming.

Transferred to Active Files.

no report

2547

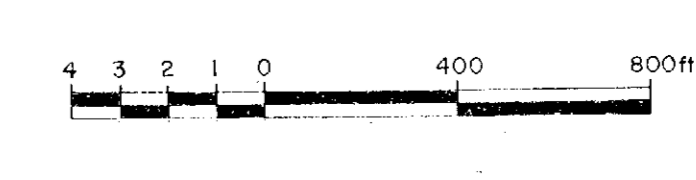
CM-14



2547

Department of
Mines and Petroleum Resources
ASSESSMENT REPORT
NO. 2547, MAP #1

CHURCHILL COPPER COKE LTD
FORT RELIANCE PROPERTY
UPPER TOAD RIVER, B.C.
LIARD M.D.
SURVEY GND
(BY CHAIN & COMPASS)
Claims outline based on drawing 1268-16 by Underhill & Underhill



STOKES EXPLORATION
MANAGEMENT CO. LTD
SCALE 1"=400'