

2635

GEOCHEMICAL REPORT

ON THE

MA 1 - 30 MINERAL CLAIMS

Located on Swakum Mtn. 50°, 120°, SW

Nicola Mining Division

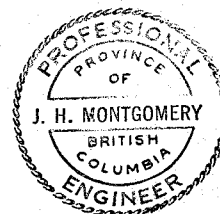
by

Department of
Mines and Petroleum Resources
ASSESSMENT REPORT

NO. 2635 MAP.....

J.H. Montgomery, P.Eng.

Work done between June 15, 1970 and July 31, 1970



September 30, 1970

TABLE OF CONTENTS

	<u>Page</u>
INTRODUCTION	1
LOCATION AND ACCESS	1
PROPERTY AND OWNERSHIP	1
STATEMENT OF COST	4
QUALIFICATIONS OF OPERATORS	5
GEOCHEMICAL SURVEY	6
CONCLUSIONS AND RECOMMENDATIONS	11

FIGURES

#1 1. CLAIM AND LOCATION MAP	
#2 2. GEOCHEMICAL PLAN	
3. FREQUENCY DISTRIBUTION - COPPER	8
4. FREQUENCY DISTRIBUTION - MOLYBDENUM	9
5. FREQUENCY DISTRIBUTION - ZINC	10

GEOCHEMICAL REPORT
ON THE
MA 1 - 30 MINERAL CLAIMS

INTRODUCTION

The following report is a record of the work done on the MA Group of mineral claims during the period June 15 to July 31, 1970. The work consists of a geochemical soil survey.

LOCATION AND ACCESS

The property is located on the east side of Swakum Mountain at Lat. 50° 17'; Long. 120° 40' (N.T.S. Ref. 92 I) in the Nicola Mining Division.

Access to the property is by a 10 mile dirt road which runs north along Clapperton and Shuta Creeks from Nicola, B.C. which is located on Highway 5. See Figure 1.

The property is at an elevation of approximately 5500 feet.

PROPERTY AND OWNERSHIP

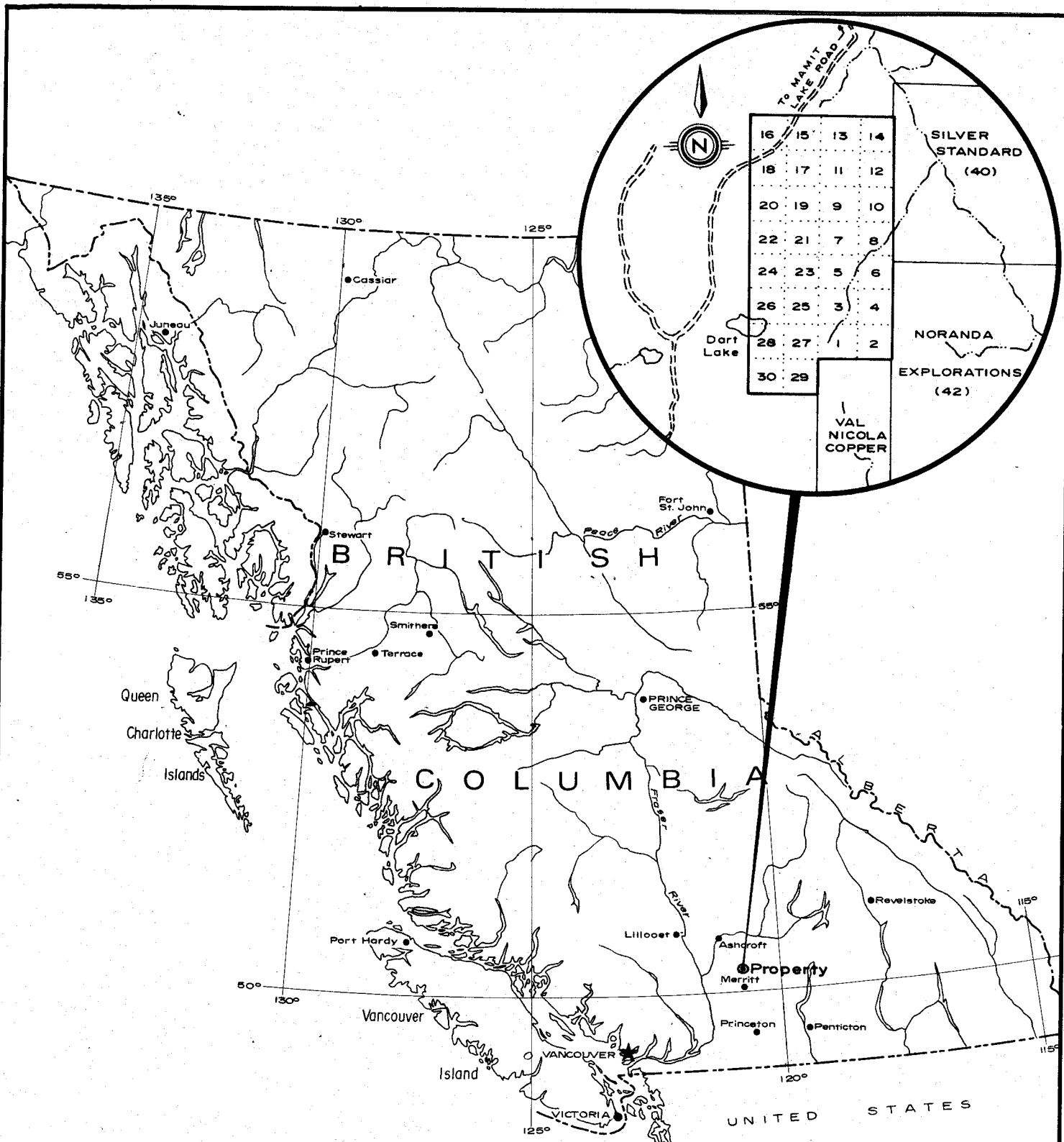
The property is comprised of 30 full-sized mineral claims which were staked by Mr. Robert Munro and subsequently

transferred by Bill of Sale to Pomona Development Limited of Vancouver, B.C.

The claims were grouped (MA Group) and work filed in the amount of \$3,000.00 on August 24, 1970.

Particulars of the claims are given in the following table:

Claim	Record No.	Expiry Date
MA 1 - 30	42208 - 37	August 22, 1971



Department of
 Mines and Petroleum Resources
 ASSESSMENT REPORT
 NO. 2635 MAP # 1

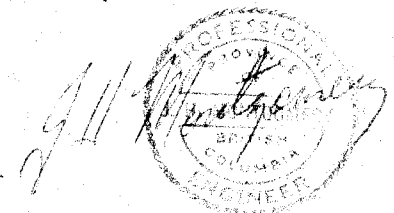


FIGURE 1
 POMONA DEVELOPMENTS LTD.
 CLAIM and LOCATION MAP
 SCALE - 1" = 136 miles

To accompany Geochemical
 Report on MA 1-30 by
 J.H. Montgomery, dated
 September 30, 1970.

STATEMENT OF COST

a) Sample Collection

<u>Name</u>	<u>No. Days</u>	<u>Rate</u>	<u>Amount</u>	
Keith Pople	4	\$ 30.00	\$ 120.00	
Robert Monroe	10	30.00	300.00	
Norm Allan	5	30.00	150.00	
Graham Nebel	4	30.00	120.00	
John Lyth	4	30.00	120.00	
Frank Lyth	4	30.00	120.00	
	<u>31</u>	<u>Total:</u>	<u>\$ 930.00</u>	<u>\$ 930.00</u>

b) Chemical Analysis

200 samples Cu Mo Zn @ \$2.70 \$ 540.00 540.00

c) Camp Board Loss

31 man-days @ \$10/day \$ 310.00 310.00

d) Truck and Camper Rental \$ 574.09 574.09

e) Miscellaneous Supplies \$ 85.00 85.00

f) Engineering and Supervision \$ 614.00 614.00

Declared before me at the Vancouver City, in the
 of Vancouver City, in the
 Province of British Columbia, this 8th
 day of October 1970, A.D.

TOTAL: \$ 3,053.09

J. H. Montgomery

L. Phillips

Submitting Recorder

QUALIFICATIONS OF OPERATORS

The geochemical soil survey was conducted under the supervision of J.H. Montgomery, P.Eng. (Geology).

K. Pople is a Professional Engineer (Mining) and R. Monroe is employed as a stock salesman. Both of these men are part-time prospectors with experience in geochemistry.

The other four sample collectors had little previous geochemical experience but were trained in the field in the proper method of taking soil samples.

GEOCHEMICAL SURVEY

Approximately 200 soil samples were taken over a 500 by 500 feet surveyed grid (See Figure 2).

Field Procedure

Soil samples were taken from the B horizon with the use of a soil auger. Sample depths ranged between 8 inches and 30 inches.

The samples were placed in kraft paper envelopes designed for the purpose and shipped to Bondar-Clegg Laboratories in Vancouver for chemical analysis. The bags were numbered as to location.

Laboratory Procedure

The samples were dried and sieved through a -80 mesh sieve. The -80 mesh fraction was retained for analysis.

The samples were treated by a hot aqua regia process and the extracts analyzed for copper, molybdenum and zinc by the Atomic Absorption method.

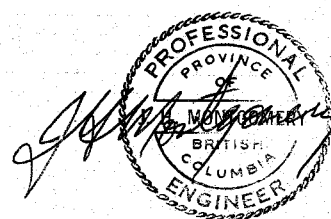
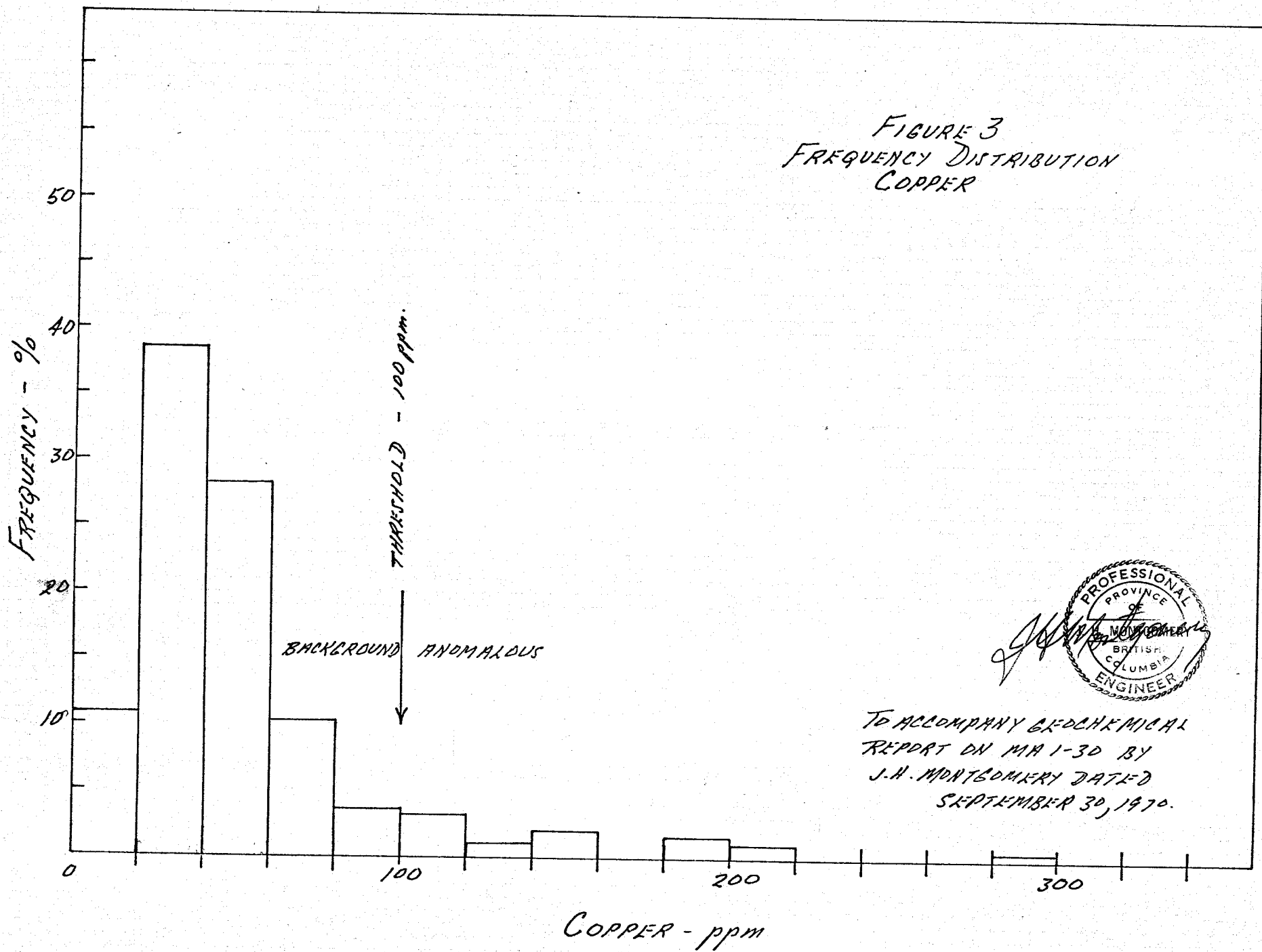
Interpretation of Results

Frequency distribution curves were plotted for each of the metals in Figures 3, 4 and 5.

In Figure 3, copper shows an almost normal distribution. A threshold value of 100 p.p.m. copper was chosen by inspection.

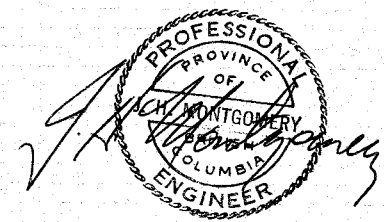
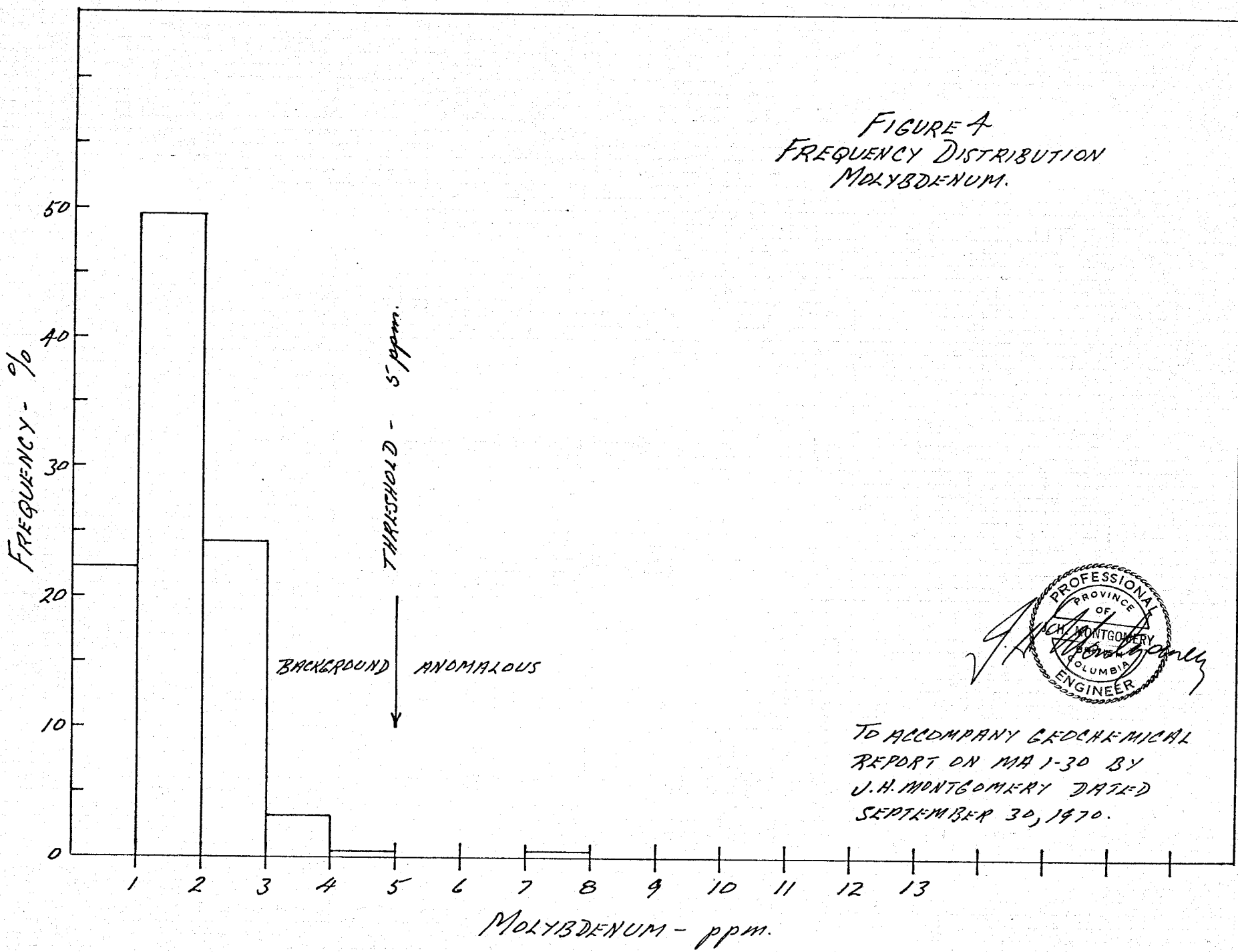
In Figure 4, molybdenum shows a normal distribution. A threshold value of 5 p.p.m. molybdenum was chosen by inspection.

In Figure 5, zinc shows a negatively skewed distribution. A threshold value of 140 p.p.m. zinc was chosen by inspection.



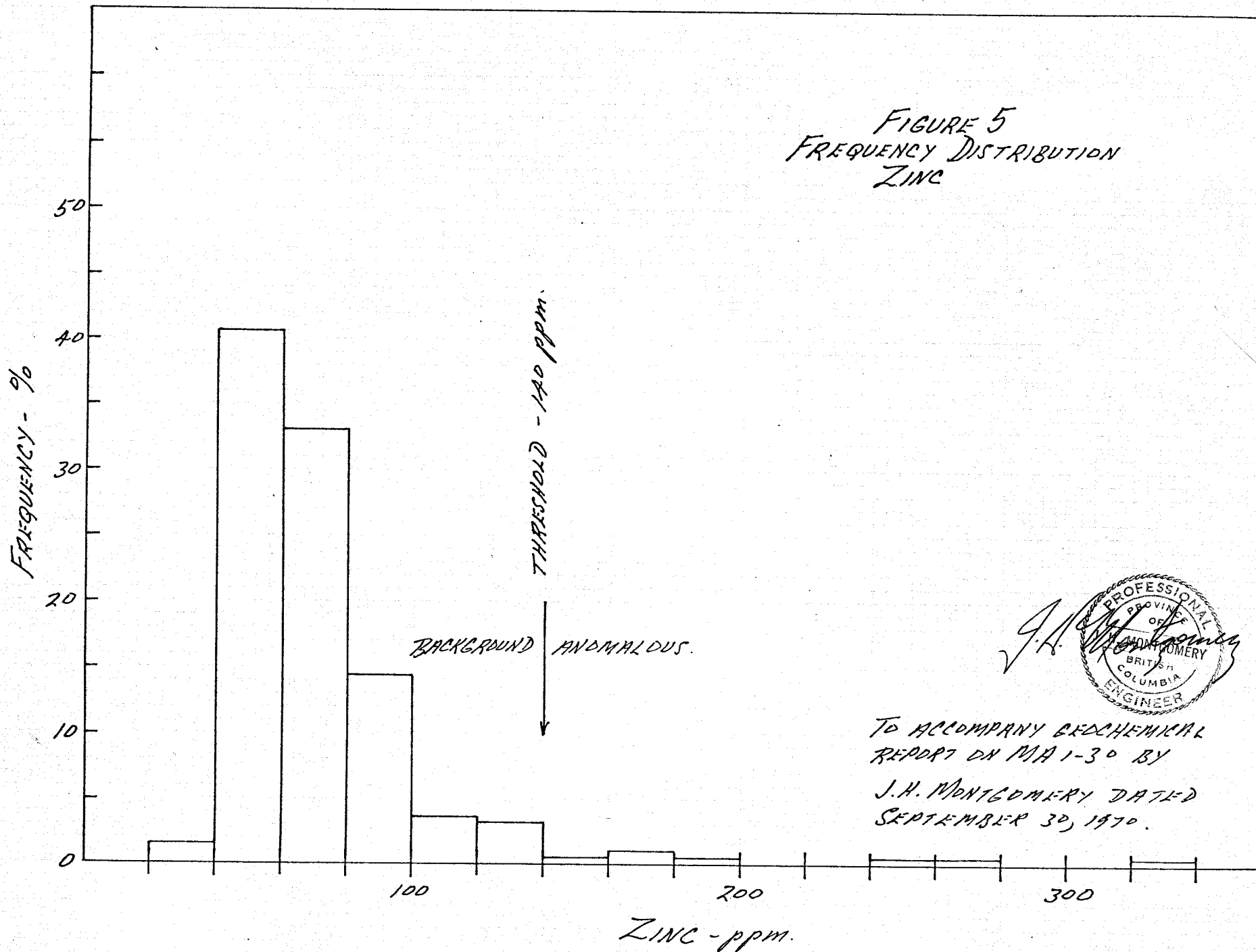
TO ACCOMPANY GEOTECHNICAL
REPORT ON MA 1-30 BY
J.H. MONTGOMERY DATED
SEPTEMBER 30, 1970.

FIGURE 4
FREQUENCY DISTRIBUTION
MOLYBDENUM.



TO ACCOMPANY GEOCHEMICAL
REPORT ON MA 1-30 BY
J.H. MONTGOMERY DATED
SEPTEMBER 30, 1970.

FIGURE 5
FREQUENCY DISTRIBUTION
ZINC



J.H. Montgomery
PROFESSIONAL
ENGINEER
OFFICE
OF
MONTGOMERY
BRITISH
COLUMBIA

TO ACCOMPANY GEOCHEMICAL
REPORT ON MA 1-30 BY
J.H. MONTGOMERY DATED
SEPTEMBER 30, 1970.

A total of 20 anomalous copper values were detected. Most of these are concentrated at the north end of the claim group but are still somewhat erratic. Contouring of the results is not possible.

Only one anomalous molybdenum value was detected but it may be of significance since it coincides with an anomalous copper.

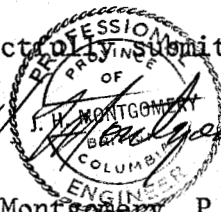
Seven anomalous zinc values were detected. These are also mostly on the north end of the property.

CONCLUSIONS AND RECOMMENDATIONS

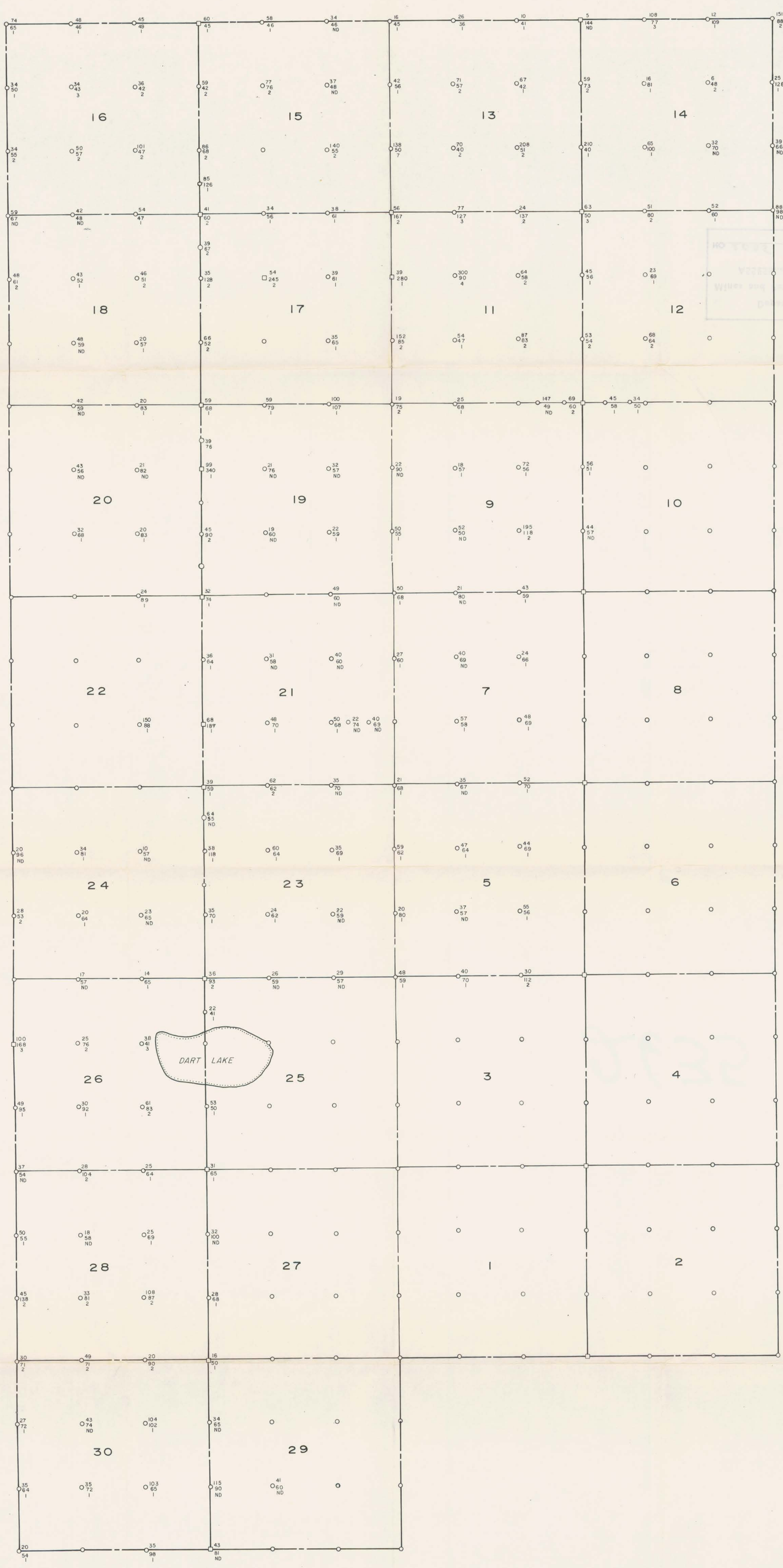
Although the anomalous values obtained by the survey are only moderately high and somewhat erratic, they are, for the most part, concentrated in one area of the property.

It is recommended that some additional closer-spaced sampling and careful prospecting in that area be undertaken.

Respectfully Submitted,


J.H. Montgomery, P.Eng.

September 30, 1970.



NO. 1000
 VERTICAL SCALE
 1/2" = 100 FEET
 1/4" = 50 FEET

2635
 FIGURE 2

POMONA DEVELOPMENTS LTD.
 M.A. GROUP
 SWAKUM MTN., MERRITT B.C.
GEOCHEMICAL PLAN

LEGEND
 □—Claim post
 ○—Cu in p.p.m.
 ○—Zn in p.p.m.
 ○—Mo in p.p.m.
 --- Claim line
 Lake

To accompany Geochemical Report on MA 1-30
 by J.H. Montgomery, dated September 30, 1970.

