

2671

GEOLOGICAL REPORT

on the

RUM 1 to 96 MINERAL CLAIMS

at

Latitude  $51^{\circ} 14'$  and Longitude  $124^{\circ} 15' 30''$

Clinton Mining Division

on behalf of:

Pacific Petroleum Ltd.

by

W. D. Cowan, P.Eng.,  
M. J. Linn, B.Sc.

June 8 to August 28, 1970

92N/1W, 8W.

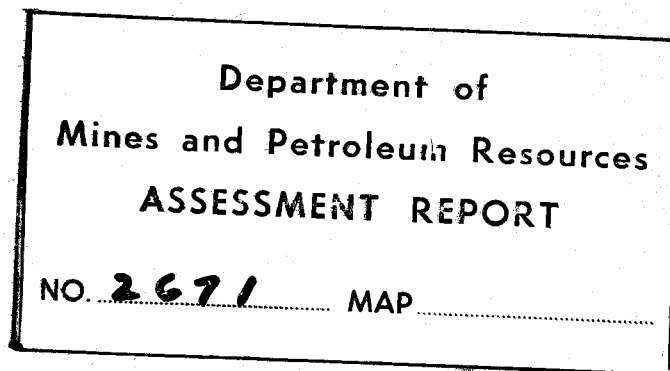
Vancouver, B.C.  
October 30, 1970

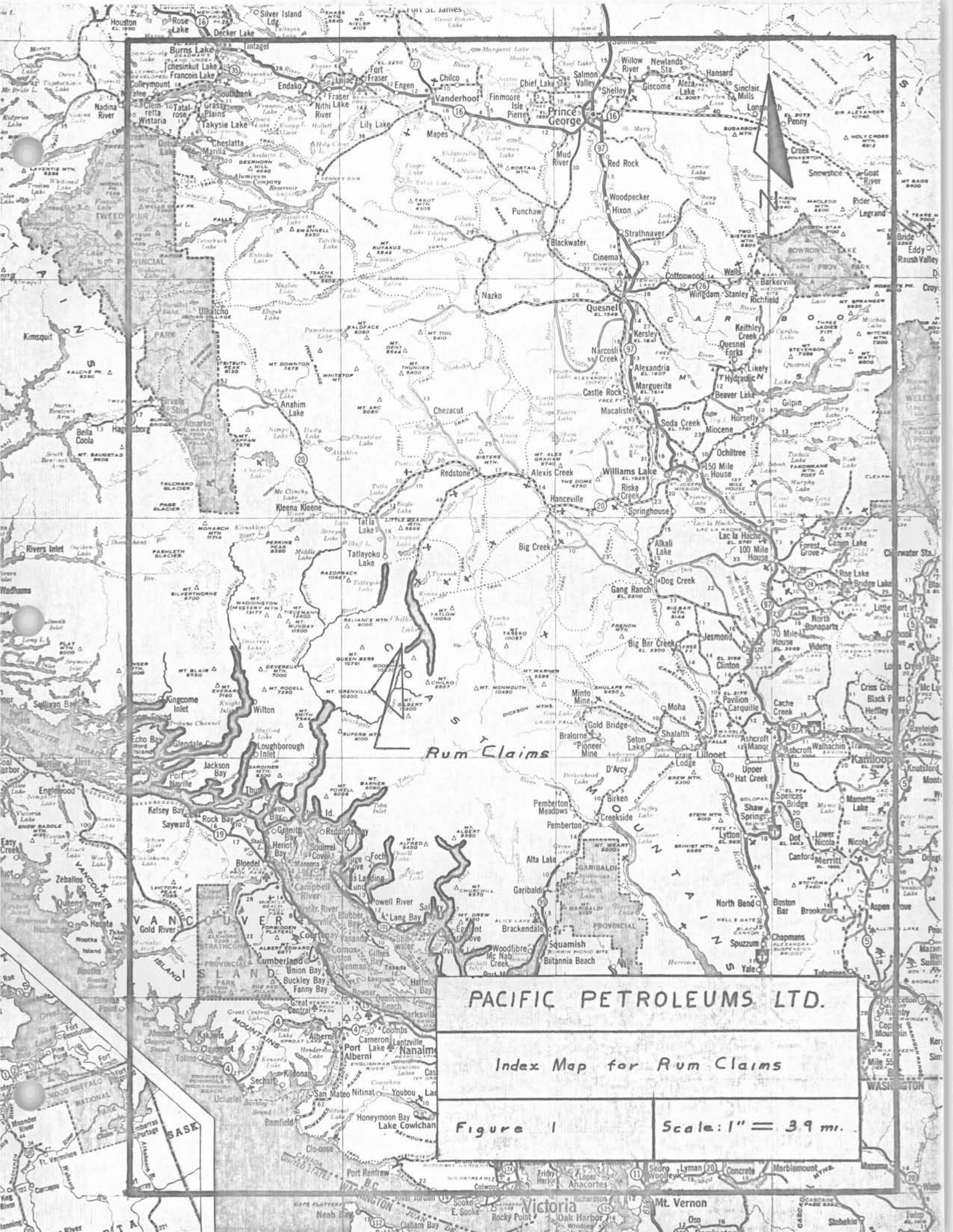
TABLE OF CONTENTS

	Page
SUMMARY AND RECOMMENDATIONS	
1. PURPOSE AND WORK DONE	1
2. LOCATION, ACCESS AND PHYSIOGRAPHY	1
3. GENERAL GEOLOGY	1
4. ECONOMIC GEOLOGY	2
5. DECLARATION OF EXPENSES	3
6. CERTIFICATION	4

ILLUSTRATIONS

- #1 Figure 1 Index Map for Rum Mineral Claims
- #2 Figure 2 Geological Map Rum #1 to #96 Mineral Claims (In Pocket)





PACIFIC PETROLEUMS LTD.

Index Map for Rum Claims

Figure 1

Scale: 1" = 3.9 mi.

Department of  
Mines and Petroleum Resources  
ASSESSMENT REPORT

NO. 2671 MAP #1

## SUMMARY & RECOMMENDATIONS

Geological mapping of the Rum mineral claims has shown that a number of small mineralized zones occur sporadically throughout an area 5,000 feet long and 700 feet wide. The zones are approximately 10 feet wide and 75 feet long and contain an estimated 0.50% copper.

It is recommended that assessment work be recorded to hold the following six mineral claims: Rum #39, #41, #63, #64, #65 and #66.

## 1. PURPOSE AND WORK DONE

The purpose of the geological survey was to outline the mineralized area and provide data for an estimate of the copper and molybdenum content of the deposit.

Geological mapping was done on a scale of 1" equal to 1,000'. An enlargement of the published 1:50,000 topographical map was used as a base for the mapping.

Seventy-five percent of the survey time was expended on geological mapping of the 18 mineral claims that lie along the east edge of the Tredcroft Glacier (See Figure 1.)

## 2. LOCATION, ACCESS AND PHYSIOGRAPHY

The Rum mineral claims are 28 miles S.S.E. of Tatlayoko Lake Post Office in the Clinton Mining Division (See Figure 1) and are accessible only by helicopter.

The claims are mostly above timberline and the terrane is rugged with elevations from about 5,600 feet in valley bottoms to 8,000 feet on mountain ridges.

## 3. GENERAL GEOLOGY

The geology of the general area has been described by Tipper\*.

The claims, which are about 4 miles from the eastern contact of the Coast Range Batholith, are underlain by Upper Triassic and Cretaceous volcanic and sedimentary rocks intruded by a stock of granodiorite to quartz diorite composition (See Figure 2.) Emplacement of the stock, which is

\* Tipper, H.W.: Mesozoic and Cenozoic Geology of the Northeast Part of Mount Waddington Map Area (92N), Coast District, British Columbia; Geol. Surv., Canada; Paper 68-33; 1969.

about 2 miles in length and 1 mile in width, induced doming and low rank metamorphism in the country rock.

Two major faults and abundant minor faults occur on the claims. The axes of the stock parallel major faults in the area, suggesting that emplacement of the stock was fault-controlled.

Lamprophyre dykes are abundant and dykes of aplite and pegmatite occur in mineralized parts of the stock. Stringers of calcite, epidote and quartz are plentiful along the northern contact of the stock.

#### 4. ECONOMIC GEOLOGY

Coarse-grained chalcopyrite and minor molybdenite occur in mineralized zones of closely-spaced parallel fracture fillings 1/8" to 1" apart or as disseminations in quartz diorite. Mineralized zones are approximately 4 to 20 feet wide and 50 to 100 feet long and occur sporadically throughout an area 5,000 feet long and 700 feet wide (See Figure 2.) Rock between the mineralized zones contains a few chalcopyrite-bearing quartz or calcite stringers.

The grade of the mineralized zones vary from 0.04% to 0.86% copper. Sample locations are shown on the geological map accompanying this report (See Figure 2.)

Statement of Expense

Rum Mineral Claims #1 to #96

Geological Mapping

1. Communications

Marconi CH 25	\$ 210.00	\$	\$
Spilsbury & Tindall SBX-11	<u>165.00</u>		375.00

2. Helicopter

41.4 hrs. @ \$140/hr.			5,796.00
-----------------------	--	--	----------

3. Room and Board

6 men: 81 days @ \$15/day (Helicopter crew board costs were divided equally between the Ben and Rum mineral claims as the machine was working both groups simultaneously).			1,215.00
---	--	--	----------

4. Salaries and Wages

(based on a 22-day month)

Geologist: 5 days @ \$1,000/mo.	230.00		
Geologist: 26 days @ 750/mo.	886.00		
Geol.Asst: 25 days @ 500/mo.	568.00		
Geol.Asst: 21 days @ 500/mo.	<u>23.00</u>		1,707.00

5. Stationery, maps, aerial photos, etc.,			100.00
---	--	--	--------

6. Assay Costs			90.00
----------------	--	--	-------

<u>Preparation of Reports</u>			<u>250.00</u>
-------------------------------	--	--	---------------

Declared before me at the <i>City</i>	Total	<u>\$ 9,533.00</u>
of <i>Vancouver</i> , in the	<i>W. H. Wood, P. Eng.</i>	
Province of British Columbia, this <i>2nd</i>		
day of <i>November, 1970</i> , A.D.		

*L. Jeannotte*  
 A Commissioner for taking Affidavits within British Columbia or  
 A Notary Public in and for the Province of British Columbia.

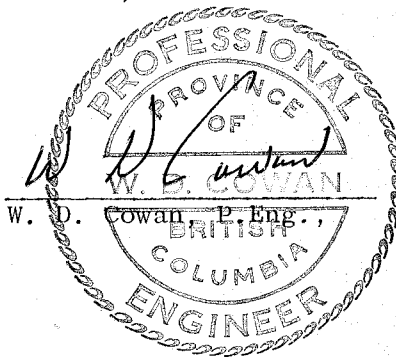


## 6. CERTIFICATION

I, W. D. Cowan of Vancouver, British Columbia hereby certify  
that:

- (a) I am a member of the Association of Professional Engineers  
of the Province of British Columbia.
- (b) I am a graduate of the University of Alberta; B.Sc.,  
Mining Engineering, 1960 and of McGill University;  
M.Sc., Geology, 1969.
- (c) I have been a practising engineer since 1960.

Dated this 29 day of  
October, 1970



5. DECLARATION OF EXPENSES

I, W. D. Cowan, P.Eng., do hereby declare that the following are the direct costs incurred in the geological examination of the Rum #1 to #96 mineral claims:

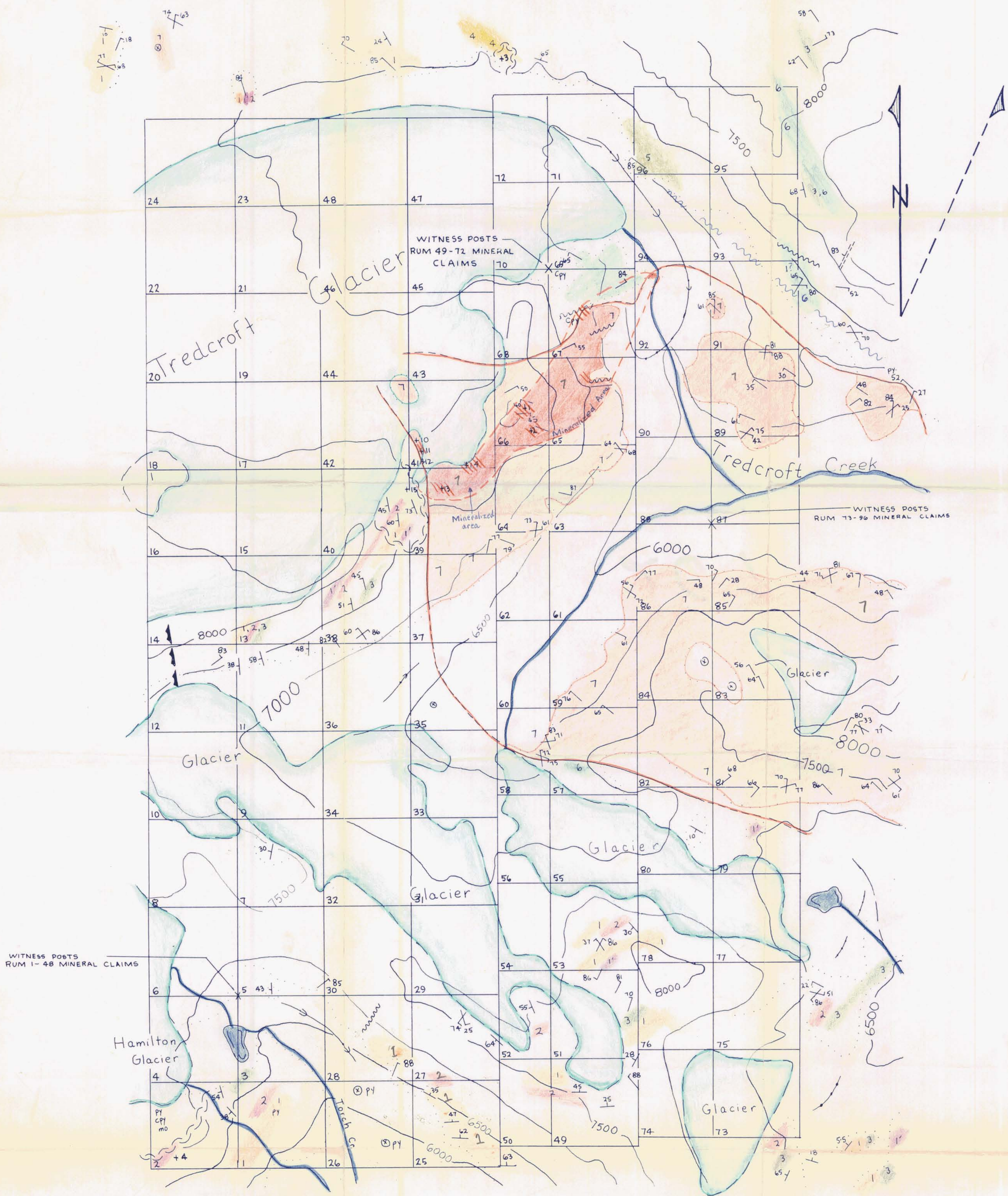
(a) Geological Mapping	\$ 9,283.00
(b) Preparation of Reports	<u>250.00</u>
(c) Total Cost	<u>\$ 9,533.00</u>

Declared before me at the *City*  
of *Vancouver*, in the  
Province of British Columbia, this *2nd*  
day of *November*, 1970, A.D.

*W.D. Cowan, P. Eng*

*A. Jennette*  
A Commissioner for taking Affidavits within British Columbia or  
A Notary Public in and for the Province of British Columbia.

SUB-MINING RECORDER



**LEGEND**

- Greywacke
- Conglomerate
- Shale
- Shale conglomerate
- Siltstone
- Carbonate
- Volcanic Breccia
- Green Volcanics
- Hornblende Quartz Diorite

Scale 1:12,000 1" = 1000'

**LEGEND**

- Strike & dip of bedding, fracturing
- Float
- Dike, Fault, Overthrust
- Outcrop boundary
- Rock contact
- Mineral Occurrence
- Gossan
- Till Ridges
- End Moraines
- Sample Location
- Mineralized zones

Figure 2  
 To Accompany Geological Report on Rum 1 to 96 Mineral Claims Located 28 Miles South of Tallyako Lake Post Office Clinton Mining Division  
 By  
 W.D. COWAN PENG  
 and  
 M.J. LINN B.Sc.

PACIFIC PETROLEUMS LTD.  
 GEOLOGICAL MAP  
 RUM MINERAL CLAIMS  
 DATE: 4 SEPT. 1970  
 DRAWN BY: M.J. LINN

Sample	Assay No.	Cu, %	Ag, oz/ton	Au, oz/ton	MoS <sub>2</sub> , %	WO <sub>3</sub> , %
1	26966	.79	—	—	—	—
2	26967	.86	.05	—	.036	—
3	26968	.10	.10	—	.01	—
4	26971	.01	.10	.01	trace	—
10	26951	.04	trace	—	—	—
11	26952	.02	trace	—	—	—
12	26953	.48	—	—	trace	—
13	26956	.44	—	—	—	—
14	26954	.46	—	—	—	—
15	26955	—	.10	trace	—	.02



Department of  
 Mines and Petroleum Resources  
 ASSESSMENT REPORT  
 NO. 2671 MAP #2

2671