

KENCO EXPLORATIONS, (WESTERN) LIMITED

REPORT

ON

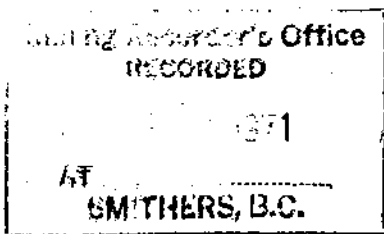
MAGNETOMETER SURVEY

LEN NO. 3 GROUP

(Len Mineral Claims No. 15-18, 29-32, 35-38, 42 Fr, 45-58, 84 Fr)

Situated one-half mile south of Huckleberry Mtn.  
Omineca Mining Division,  
British Columbia

53° 127° NE



June 28 to July 14, 1970

By

R. W. Stevenson, P. Eng.

September 24, 1970

GOVERNMENT AGENT  
RECEIVED  
SMITHERS, B. C.

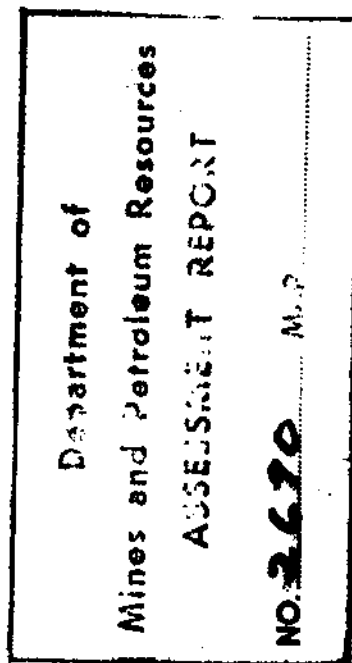
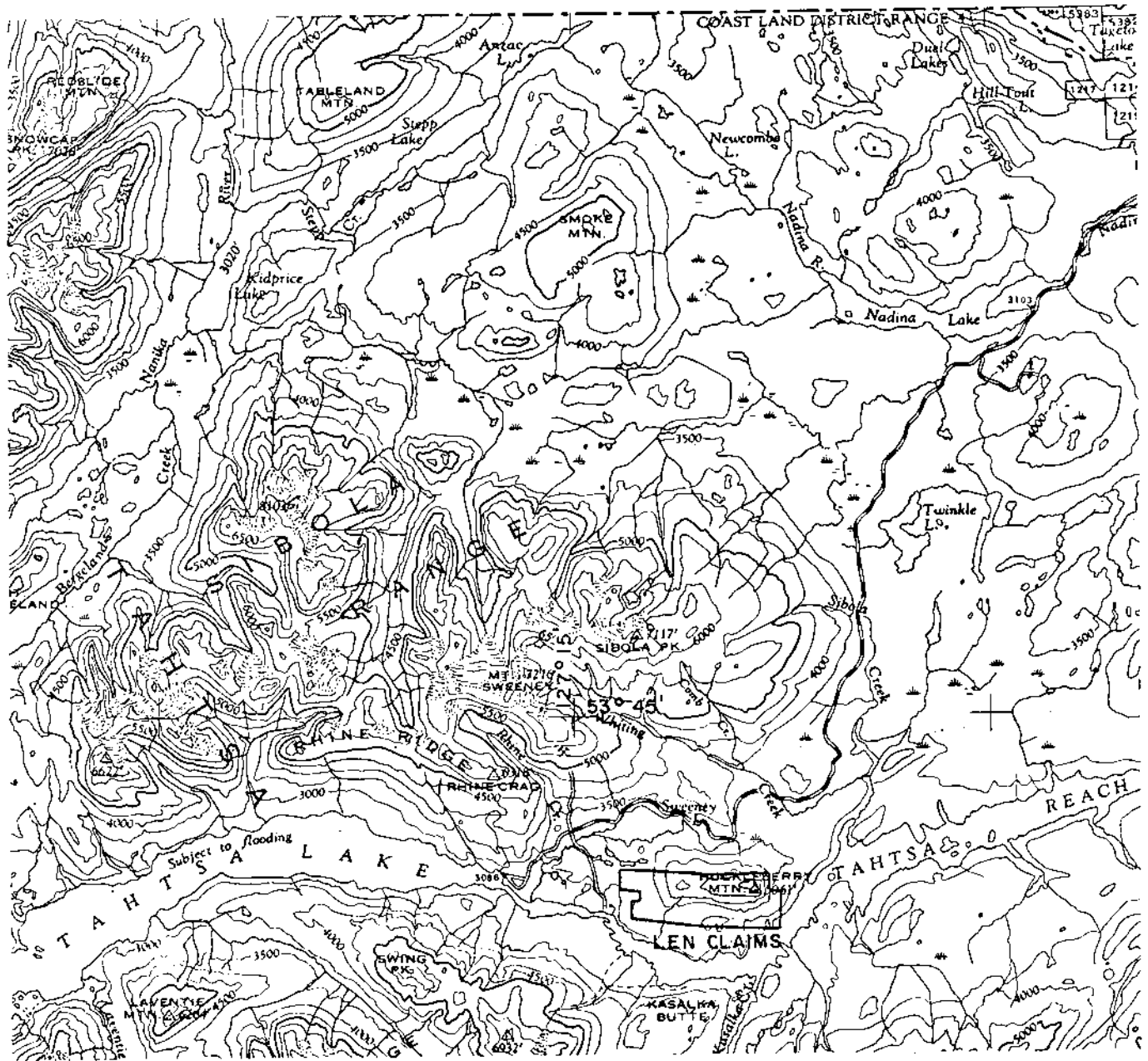


TABLE OF CONTENTS

	<u>Page</u>
LIST OF CLAIMS AND DISTRIBUTION OF WORK	1
STATEMENT OF COSTS INCURRED	2
Magnetometer Survey	2
INTRODUCTION	3
LOCATION AND ACCESS	4
MAGNETOMETER SURVEY	5
Magnetic Survey Method	5
Interpretation	5

LIST OF ILLUSTRATIONS

#1	Location Map	1 : 250,000	
#2 Plate No. 1	Magnetometer Survey	1" = 400'	Pocket



Keneco Explorations (Western) Limited

## LEN CLAIMS

Situated one-half mile south of Huckieberry Mtn.

Omineca Mining Division

British Columbia

Scale:

1:250,000

53° 127° N.E.

### LOCATION MAP

*R. H. Stevenson*

LIST OF CLAIMS AND DISTRIBUTION OF WORK

Len No. 3 Group

<u>Claim No.</u>	<u>Record No.</u>	<u>Record Date</u>	<u>Magnetometer Work Ea.Claim</u>	<u>Years Applied</u>
29	15817	August 24	\$10	
30	15818	"	10	
31	15819	"	25	
32	15820	"	5	
37	21508	August 2	15	
38	21509	"	50	
45	78767	August 18	30	
46	78768	"	10	
47	78769	"	10	3
51	78773	"	40	1
52	78774	"	35	
53	78775	"	15	
54	78776	"	55	
55	78777	"	40	
56	78778	"	55	
57	78779	"	20	
58	78780	"	36	
			<hr/>	<hr/>
			\$461	4

STATEMENT OF COSTS INCURRED

Magnetometer Survey

A detailed explanation of how the magnetometer survey expenditures were incurred is given under the section entitled "Magnetic Survey Method".

The total cost of the magnetometer survey on Len No. 3 Group is as follows:

Survey:

Wages & Board:

R.W. Stevenson	June 28; July 4, 7	@ \$35.00+\$5.00	\$120.00
M.R. Hegge	July 14	@ \$35.00+\$5.00	40.00
M.H. Holtby	June 28,30; July 4,7,9,14	@ \$21.00+\$5.00	156.00
M. Murison	June 28,30; July 4,7	@ \$20.00+\$5.00	100.00

Magnetometer Rental: 5 days @ \$9.00/day 45.00  
TOTAL = \$461.00

The amount expended on each claim is shown on the list of claims.

Expenditure on Group No. 3 ..... \$461.00

INTRODUCTION

The Len No. 3 Group of mineral claims discussed in this report, is situated about one-half mile south of Huckleberry Mountain, British Columbia. The exploration work on these claims consisted of a magnetometer survey.

The work was done under the supervision of R. W. Stevenson, P. Eng.

LOCATION AND ACCESS

The property is situated at Latitude 53°40'N, Longitude 127°10'W, about 77 miles south of Smithers, B. C. This is between Huckleberry Mountain and Tahtsa Reach. The survey area varies in elevation from 3000' to 4500' above sea level. The slope is to the south. It is well timbered with mature alpine fir, lodgepole pine, black spruce, and engleman spruce.

Access to the property is by road along the Tahtsa Lake road. It is approximately 72 miles by road from Houston.

## MAGNETOMETER SURVEY

### Magnetic Survey Method

A pre-existing grid was used for the magnetometer stations. This gave proper control of the reading sites, with no further expenditure. The base-line direction is east-west. The grid layout gave efficient coverage of the area that was to be surveyed, as well as conforming to the claim boundaries. A base map with scale 1" = 400' was compiled for use in plotting the magnetic value at each station, and in contouring those values.

A McPhar M-700 Fluxgate magnetometer was used to carry out the magnetic measurements. This measures vertical magnetic intensity with a maximum sensitivity of 20 gammas per scale division, and a maximum resolution of 5 gammas. It is self-levelling, and orientation-insensitive. Lines were run in loop patterns, with the maximum time between check stations being two hours. This information was used to make diurnal corrections, and check for any unusual magnetic activity caused by magnetic storms.

### Interpretation

A small, but strong magnetic anomaly is centered at 5+00W, 31+00S. The anomaly has a diameter of about 350 to 400 feet, and a magnetic contrast of about 8,500 gammas. This probably represents development of magnetite in tuffaceous rock as the result of intrusive activity.



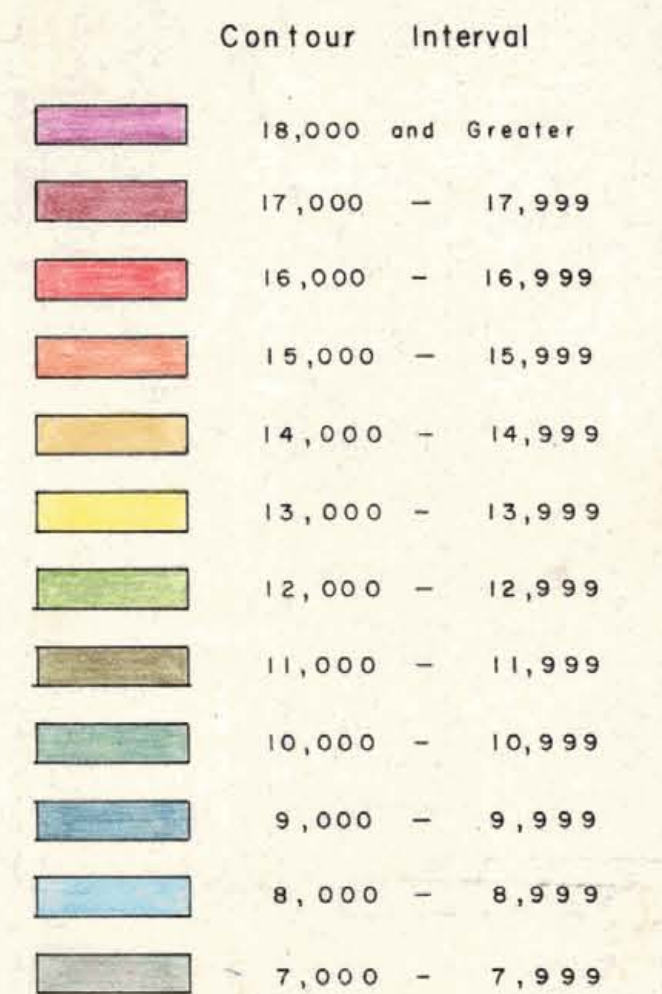
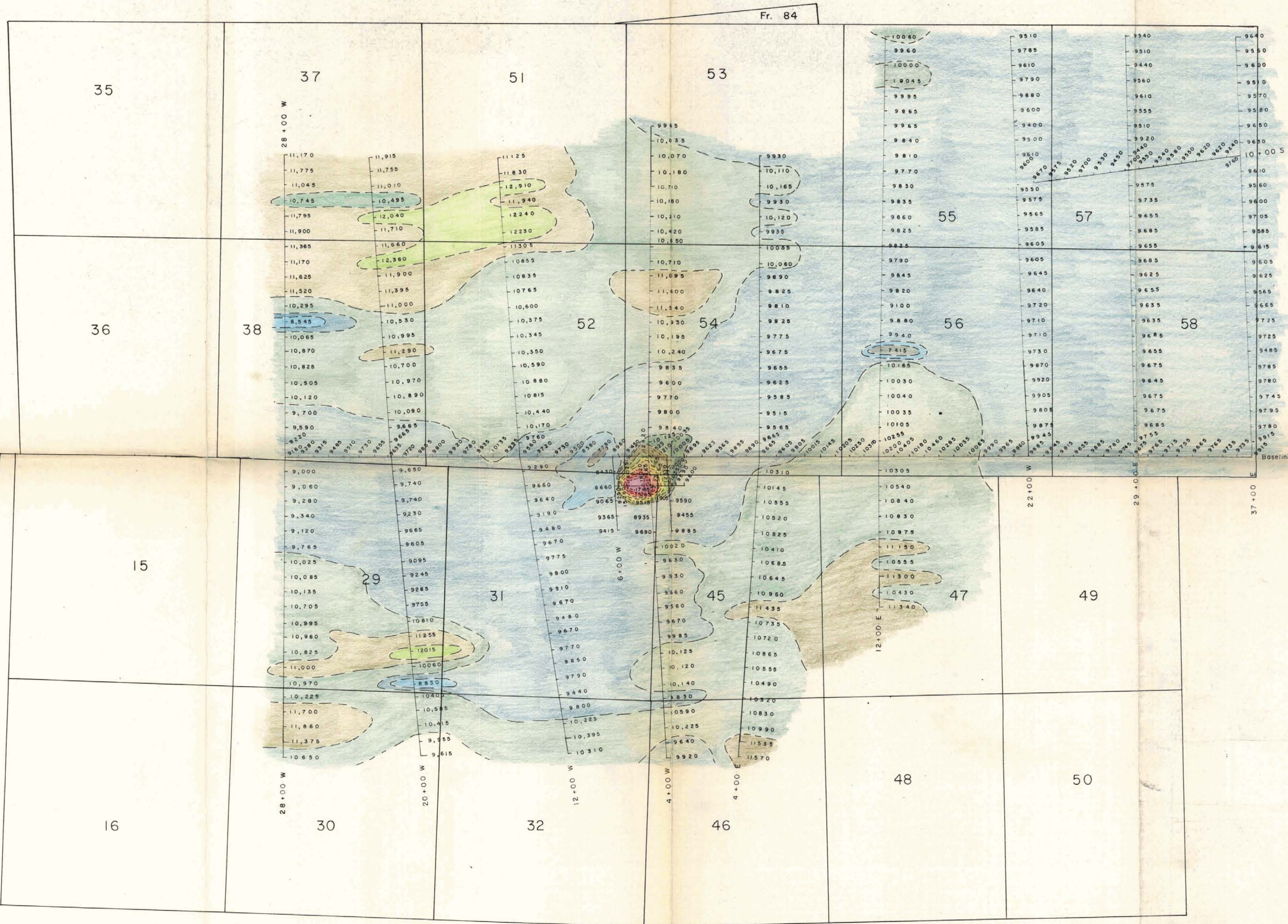
There is a very weak magnetic low, trending northeast through the center of the survey area. It has a magnetic contrast of 2,000 to 3,000 gammas. It may be due to a deficiency of magnetite in feldspathic tuffaceous rocks, compared to andesitic rocks to the north and south.

Vancouver, B. C.

September 24, 1970



R. W. Stevenson



To accompany Magnetometer Survey Report by R. W. Stevenson, P. Eng.,  
 on the Len No. 3 Group, one-half mile south of Huckleberry Mountain,  
 Omineca Mining Division, dated Sept. 24, 1970.

**KENCO EXPLORATIONS (WESTERN) LIMITED**

Len No. 3 Group  
 Len Mineral Claims No. 15-18, 29-32, 35-38, 42 Fr., 45-58, 84 Fr.  
 Omineca M. D., B. C.

Magnetometer Survey

DATA BY: R. W. S.	N.T.S. 93 E	PL. NO.:
DRAWN BY:	DATE:	SCALE: 1" = 400'
TRACED BY:	DATE:	
REVISIONS:	FILE NO.	

*R. W. Stevenson*